

Government of India
Ministry of Petroleum and Natural Gas
Economic & Statistics Division

New Delhi
Dated the 21st June, 2019

Monthly Production Report
May, 2019

Crude Oil

1. **Crude oil production¹** during May, 2019 was 2800.12 TMT which is 3.37% lower than target and 6.91% lower when compared with May 2018. Cumulative crude oil production during April-May, 2019 was 5518.61 TMT which is 1.92% lower than target for the period and 6.82% lower than production during corresponding period of last year. Unit-wise and State-wise crude oil production is given at **Annexure-I**. Unit-wise crude oil production for the month of May, 2019 and cumulatively for the period April-May, 2019 vis-à-vis same period of last year has been shown in Table-1 and month-wise in Figure-1.

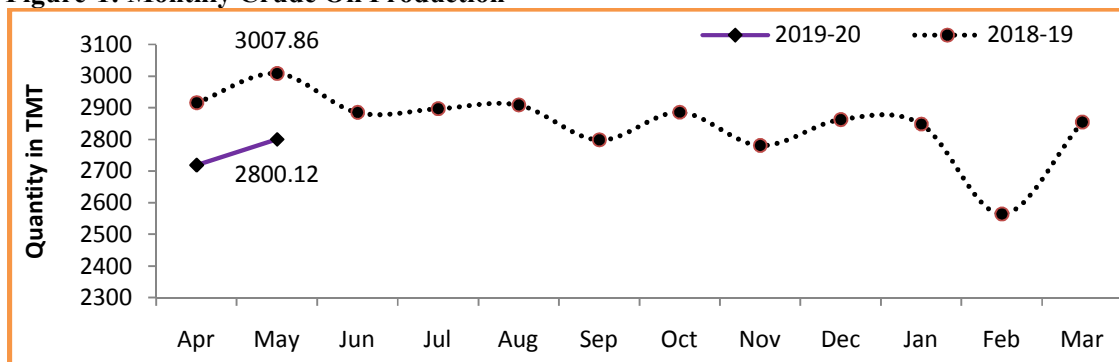
Table-1: Crude Oil Production (in TMT)

Oil Company	Target	May (Month)				April-May (Cumulative)			
	2019-20 (Apr-Mar)	2019-20		2018-19	% over last year	2019-20		2018-19	% over last year
		Target	Prod.*	Prod.		Target	Prod.*	Prod.	
ONGC	22153.90	1763.91	1759.58	1840.93	95.58	3456.28	3450.35	3618.26	95.36
OIL	3424.90	284.90	273.95	285.02	96.12	561.29	539.16	559.36	96.39
PSC Fields	9463.34	848.92	766.59	881.91	86.92	1608.95	1529.10	1745.17	87.62
Total	35042.15	2897.74	2800.12	3007.86	93.09	5626.51	5518.61	5922.78	93.18

Note: Totals may not tally due to rounding off.

*: Provisional

Figure-1: Monthly Crude Oil Production



¹Including condensate

Unit-wise production details with reasons for shortfall are as under:

- 1.1 Crude oil production by **ONGC** during May, 2019 was 1759.58 TMT which is marginally lower by 0.25% than the monthly target and 4.42% lower when compared with May, 2018. Cumulative crude oil production by ONGC during April-May, 2019 was 3450.35 TMT which is 0.17% lower than target for the period and lower by 4.64% than production during corresponding period of last year. Major reasons for lower production is less off take by consumers in Tripura, Cauvery & Rajahmundry.
- 1.2 Crude oil production by **OIL** during May, 2019 was 273.95 TMT which is 3.84% lower than monthly target and 3.88% lower when compared with May, 2018. Cumulative crude oil production by OIL during April-May, 2019 was 539.16 TMT which is 3.94% lower than target for the period and 3.61% lower than production during the corresponding period of last year. Major reasons for lower production is less than planned contribution from work over wells and drilling wells.
- 1.3 Crude oil production by **Pvt/JVs** during May, 2019 was 766.59 TMT which is 9.70% lower than the monthly target and 13.08% lower than May, 2018. Cumulative crude oil production by Pvt/JVs during April-May, 2019 was 1529.10 TMT which is 4.96% lower than target for the period and 12.38% lower than the production during the corresponding period of last year. Reasons for shortfall in production are as under:
 - ❖ RJ-ON-90/1 (CEIL): Deficit is from Mangla due to delay in 45 FM infills.
 - ❖ Lower work over (WO) and production enhancement activities due to one work over rig being taken offline for mandatory maintenance and HSE compliance.
 - ❖ Operational issues in Bhagyam, Aishwarya, ABH and RDG fields.
 - ❖ CB-ONN-2005/9 (Mercator): Stoppage in from Jyoti-1 is stopped. Well closed for long term pressure build up study and could not be put back in production due to non-grant of EC for development campaign.
 - ❖ The other discovery well, Jyoti-2 is not yet activated and is under WO from 31.03.19.
 - ❖ The delay in drilling the new development well is primarily due to non-grant of EC for development campaign till date.

Natural Gas

2. **Natural gas production** during May, 2019 was 2738.92 MMSCM which is 0.4% higher when compared with May, 2018 but 4.81% lower than the target for the month. Cumulative natural gas production during April-May, 2019 was 5394.81 MMSCM which is marginally higher by 0.07% than the production during corresponding period of last year but 4.56% lower than target for the period. Unit-wise and state-wise natural gas production is given at **Annexure-II**. Unit-wise natural gas production for the month of May, 2019 and

cumulatively for the period April-May, 2019 vis-à-vis same period of last year has been shown in Table-2 and month-wise in Figure-2.

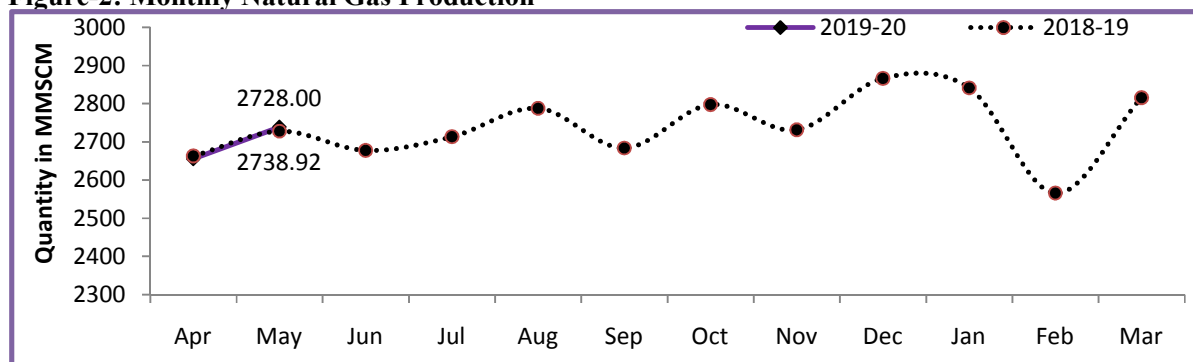
Table-2: Natural Gas Production (MMSCM)

Oil Company	Target	May (Month)				April-May (Cumulative)			
	2019-20 (Apr-Mar)	2019-20		2018-19	% over last year	2019-20		2018-19	% over last year
		Target	Prod.*	Prod.		Target	Prod.*	Prod.	
ONGC	25848.00	2132.22	2082.39	1981.56	105.09	4226.64	4120.10	3953.58	104.21
OIL	3309.59	287.21	230.89	227.44	101.52	563.79	455.38	448.86	101.45
PSC Fields	5395.20	457.99	425.64	519.00	82.01	862.32	819.34	988.51	82.89
Total	34552.79	2877.42	2738.92	2728.00	100.40	5652.75	5394.81	5390.94	100.07

Note: Totals may not tally due to rounding off.

*: Provisional

Figure-2: Monthly Natural Gas Production



2.1 Natural gas production by **ONGC** during May, 2019 was 2082.39 MMSCM which is 5.09% higher when compared with May, 2018 but 2.34% lower than the monthly target. Cumulative natural gas production by ONGC during April-May, 2019 was 4120.10 MMSCM which is 4.21% higher than the production during the corresponding period of the last year but 2.52% lower than the cumulative target.

2.2 Natural gas production by **OIL** during May, 2019 was 230.89 MMSCM which is 1.52% higher than May, 2018 but 19.61% lower than the monthly target. Cumulative natural gas production by OIL during April-May, 2019 was 455.38 MMSCM which is target 1.45% higher than the production during the corresponding period of last year but 19.23% lower than the cumulative. Major reason for lower production is loss of potential in Deohal area due to presence of CO₂ in production stream and blockade in operational areas.

2.3 Natural gas production by **Pvt/JVs** during May, 2019 was 425.64 MMSCM which is 7.06% lower than the monthly target and 17.99% lower when compared with May, 2018. Cumulative natural gas production by Pvt/JVs during April-May, 2019 was 819.34 MMSCM which is 4.98% lower than the cumulative target and 17.11% lower than the production during the corresponding period of last year. Reasons for shortfall in production are as under:

- ❖ KG-DWN-98/3 (RIL): MA field ceased production and closure of 2 wells in D1D3 field.
- ❖ KG-OSN-2001/3 (ONGC): Delay in anticipated production from well DDW D-5.
- ❖ AAP-ON-94/1 (HOEC): Less Production due to low consumer demand.
- ❖ Raniganj East CBM Block (ESSAR): Few wells closed for planned maintenance and refrac jobs. Major customer 'Matix' operational shutdown.

3. Refinery Production (in terms of crude oil processed)

Refinery production during May, 2019 was 21577.85 TMT which is 0.51% lower than the target for the month and 2.98% lower when compared with May, 2018. Cumulative production during April-May, 2019 was 42280.91 TMT which is 1.61% higher than the target for the period and 0.44% higher than the production during corresponding period of last year. Unit-wise production is given at **Annexure-III**. Company-wise production for the month of May, 2019 and cumulatively for the period April-May, 2019 vis-à-vis same period of last year has been shown in Table-3 and month-wise in Figure-3.

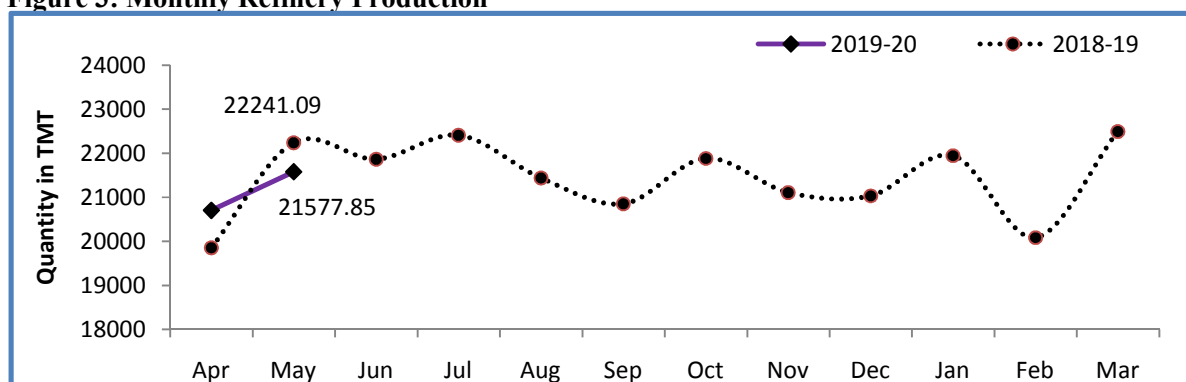
Table 3: Refinery Production (TMT)

Oil Company	Target	May (Month)				April-May (Cumulative)			
	2019-20 (Apr-Mar)	2019-20		2018-19	% over last year	2019-20		2018-19	% over last year
		Target	Prod.*	Prod.		Target	Prod.*	Prod.	
CPSE	145944	12344.01	11896.24	12792.66	92.99	24010.68	23159.56	24427.91	94.81
IOCL	69900	5924.86	5926.70	6285.17	94.30	11459.86	11461.14	11595.05	98.85
BPCL	30900	2700.00	2760.62	2680.43	102.99	5269.99	5333.85	5191.47	102.74
HPCL	16499	1556.00	1351.27	1546.91	87.35	2963.00	2441.14	3014.01	80.99
CPCL	10400	930.00	904.24	841.22	107.49	1830.00	1744.15	1703.48	102.39
NRL	2800	259.10	223.31	213.79	104.45	509.80	464.01	438.24	105.88
MRPL	15400	970.00	722.30	1219.28	59.24	1970.00	1701.29	2473.05	68.79
ONGC	46	4.06	7.81	5.87	133.08	8.03	14.00	12.61	111.00
JVs	18755	1588.00	1787.38	1691.43	105.67	3126.00	3509.03	3192.08	109.93
BORL	7800	660.00	704.56	640.08	110.07	1300.00	1375.62	1102.43	124.78
HMEL	10955	928.00	1082.82	1051.35	102.99	1826.00	2133.42	2089.65	102.09
Private	88041	7757.00	7894.24	7757.00	101.77	14473.94	15612.32	14473.94	107.87
RIL	69145	5967.28	6137.46	5967.28	102.85	10954.38	12143.46	10954.38	110.85
EOL	18896	1789.72	1756.77	1789.72	98.16	3519.55	3468.86	3519.55	98.56
TOTAL	252740	21689.02	21577.85	22241.09	97.02	41610.62	42280.91	42093.92	100.44

Note: Totals may not tally due to rounding off.

*: Provisional

Figure 3: Monthly Refinery Production



3.1 **CPSE Refineries' production** during May, 2019 was 11896.24 TMT which is 3.63% lower than the target for the month and 7.01% lower when compared with May, 2018. Cumulative production by CPSE refineries during April-May, 2019 was 23159.56 TMT which is 3.54% lower than the target for the period and 5.19% lower than the production during corresponding period of last year. Reasons for shortfall of refinery production in some CPSE refineries are as under:

- ❖ HPCL, Mumbai: Lower due to planned shutdown of secondary units.
- ❖ HPCL, Visakh: Lower due to crude mix impact.
- ❖ CPCL, Manali: Lower due to non receipt of crude vessel at oil jetty BD-3 owing to repair work by Chennai Port.
- ❖ NRL, Numaligarh: Lower due to lower crude receipt.
- ❖ MRPL, Mangalore: Lower due to restrictions in supply of water to refinery.

3.2 **Production in JV refineries** during May, 2019 was 1787.38 TMT which is 12.56% higher than the target for the month and 5.67% higher when compared with May, 2018. Cumulative production by JVs refineries during April-May, 2019 was 3509.03 TMT which is 12.25% higher than the target for the period and 9.93% higher than the production during corresponding period of last year.

3.3 **Production in private refineries** during May, 2019 was 7894.24 TMT which is higher by 1.77% than the target both for the month and corresponding month of last year. Cumulative production by private refineries during April-May, 2019 was 15612.32 TMT which is higher by 7.87% than the target and corresponding period of last year.

3.4 Refinery-wise details of the capacity utilization and production of petroleum products during the month of May, 2019 and cumulatively for the period April-May, 2019 vis-à-vis April-May, 2018 are given at **Annexures - IV and V** respectively.

MINISTRY OF PETROLEUM & NATURAL GAS

Annexure-I (Para-1)

Crude Oil Production during the month of May, 2019 and cumulatively for the period April-May, 2019 vis-à-vis April-May, 2018

(Figures in Thousand Metric Tons)

Name of Undertaking/Unit/State	Planned production during the month*	Production during the			Cumulative Production			% variation over last year		% variation during the month under review over planned production
		Month under review *	Corresponding month of last year **	Preceding month of current year **	(April-May)			During the month under review	Upto the end of the period	
					Planned production during current year*	Actual production during current year *	Actual production during corresponding period of last year **			
(1)	(2)	(3)	(4)	(5)	(6)	(7)	(8)	(9)	(10)	(11)
1. ONGC	1763.91	1759.58	1840.93	1690.77	3456.28	3450.35	3618.26	-4.42	-4.64	-0.25
Onshore	522.75	521.86	515.02	503.68	1027.95	1025.54	1011.10	1.33	1.43	-0.17
Andhra Pradesh	22.13	18.06	25.52	19.65	43.11	37.70	50.98	-29.23	-26.04	-18.39
Assam ^	83.05	81.83	83.13	79.25	161.82	161.08	163.97	-1.56	-1.76	-1.46
Gujarat	392.34	395.07	382.89	377.94	772.89	773.01	751.00	3.18	2.93	0.70
Tamil Nadu	25.24	26.90	23.47	26.85	50.13	53.75	45.15	14.58	19.05	6.55
Offshore	1241.16	1237.72	1325.91	1187.09	2428.32	2424.81	2607.16	-6.65	-6.99	-0.28
Eastern Offshore	1.46	1.46	0.99	1.57	3.03	3.03	2.15	47.00	41.00	-0.01
Western Offshore	1106.90	1106.46	1199.03	1074.78	2181.76	2181.24	2350.81	-7.72	-7.21	-0.04
Condensates	132.81	129.81	125.89	110.73	243.54	240.54	254.20	3.11	-5.37	-2.26
2. OIL (Onshore)	284.90	273.95	285.02	265.21	561.29	539.16	559.36	-3.88	-3.61	-3.84
Assam	283.45	271.59	284.19	262.91	558.31	534.50	557.80	-4.43	-4.18	-4.19
Arunachal Pradesh	1.26	1.78	0.59	1.78	2.61	3.55	1.16	200.34	205.85	40.54
Rajasthan (heavy oil)	0.19	0.59	0.24	0.52	0.37	1.11	0.39	143.54	181.37	216.09
3. Private / JVC	848.92	766.59	881.91	762.52	1608.95	1529.10	1745.17	-13.08	-12.38	-9.70
Onshore	691.29	619.71	717.82	631.08	1307.20	1250.79	1433.19	-13.67	-12.73	-10.35
Andhra Pradesh	6.05	1.79	0.46	0.91	8.44	2.70	1.15	286.64	135.57	-70.34
Arunachal Pradesh	2.70	2.91	3.24	2.69	5.34	5.61	6.40	-10.06	-12.42	8.09
Assam	3.36	2.08	2.16	2.74	6.61	4.83	3.38	-	-	-
Gujarat	30.61	10.42	12.17	10.17	60.19	20.59	24.22	-14.39	-14.99	-65.98
Rajasthan	640.60	594.64	693.24	607.33	1210.61	1201.97	1384.96	-14.22	-13.21	-7.17
Tamil Nadu	7.98	7.87	6.56	7.23	16.01	15.10	13.08	20.01	15.44	-1.33
Offshore	157.63	146.87	164.09	131.44	301.75	278.31	311.98	-10.49	-10.79	-6.83
Eastern Offshore	47.13	45.27	49.70	43.73	94.63	88.99	109.28	-8.93	-18.57	-3.95
Gujarat Offshore	66.80	60.35	61.25	56.09	133.08	116.45	110.94	-1.47	4.96	-9.66
Western Offshore	43.70	41.26	53.14	31.62	74.04	72.88	91.76	-22.36	-20.58	-5.60
GRAND TOTAL (1+2+3)	2897.74	2800.12	3007.86	2718.49	5626.51	5518.61	5922.78	-6.91	-6.82	-3.37
Onshore	1498.95	1415.53	1517.86	1399.97	2896.44	2815.50	3003.64	-6.74	-6.26	-5.57
Offshore	1398.79	1384.59	1490.00	1318.53	2730.07	2703.12	2919.14	-7.07	-7.40	-1.02

Note: Totals may not tally due to rounding off figures.

^: Includes crude oil production of Tripura

*: Provisional. **: Revised

Reasons for shortfall are indicated in the note.

MINISTRY OF PETROLEUM & NATURAL GAS

Annexure-II (Para-2)

Natural Gas Production during the month of May, 2019 and cumulatively for the period April-May, 2019 vis-à-vis April-May, 2018

(Figures in Million Cubic Meters)

Name of Undertaking/Unit/State	Planned production during the month*	Production during the			Cumulative Production (April-May)			% variation over last year		% variation during the month under review over planned production
		Month under review *	Corresponding month of last year **	Preceding month of current year **	Planned production during current year*	Actual production during current year *	Actual production during corresponding period of last year **	During the month under review	Upto the end of the period	
(1)	(2)	(3)	(4)	(5)	(6)	(7)	(8)	(9)	(10)	(11)
1. ONGC	2132.22	2082.39	1981.56	2037.71	4226.64	4120.10	3953.58	5.09	4.21	-2.34
Onshore	515.90	464.51	477.33	455.76	1028.20	920.27	948.33	-2.69	-2.96	-9.96
Andhra Pradesh	85.62	72.93	96.68	78.86	169.92	151.79	197.69	-24.57	-23.22	-14.83
Assam	45.88	39.10	40.59	37.76	89.68	76.86	80.40	-3.66	-4.41	-14.78
Gujarat	106.86	108.11	112.89	108.55	214.14	216.66	223.16	-4.24	-2.92	1.17
Rajasthan	5.39	0.00	0.69	0.00	10.61	0.00	1.33	-	-	-
Tamil Nadu	114.44	96.59	102.42	98.50	233.89	195.08	201.55	-5.69	-3.21	-15.60
Tripura	157.71	147.78	124.07	132.10	309.96	279.88	244.20	19.11	14.61	-6.29
Offshore	1616.31	1617.88	1504.23	1581.95	3198.44	3199.83	3005.25	7.56	6.47	0.10
Eastern Offshore	80.26	80.31	49.17	78.82	159.02	159.13	111.70	63.32	42.46	0.06
Western Offshore	1536.05	1537.58	1455.06	1503.13	3039.42	3040.70	2893.55	5.67	5.09	0.10
2. OIL	287.21	230.89	227.44	224.49	563.79	455.38	448.86	1.52	1.45	-19.61
Assam	267.92	207.29	207.68	203.00	525.83	410.29	409.73	-0.19	0.14	-22.63
Arunachal Pradesh	1.09	1.43	1.02	1.33	2.14	2.76	2.00	40.55	38.33	31.80
Rajasthan	18.21	22.17	18.75	20.16	35.83	42.33	37.14	18.27	13.98	21.74
3. Private / JVC	457.99	425.64	519.00	393.69	862.32	819.34	988.51	-17.99	-17.11	-7.06
Onshore	144.86	138.42	144.78	144.24	288.67	282.66	274.87	-4.39	2.83	-4.44
Andhra Pradesh	2.68	0.55	0.20	0.40	3.70	0.95	0.54	174.26	76.39	-79.31
Assam	33.14	0.63	1.90	0.62	65.22	1.26	3.76	-66.65	-66.53	-98.09
Arunachal Pradesh	0.66	20.81	21.58	26.73	1.31	47.54	34.12	-	-	-
Gujarat	7.98	5.24	6.36	5.21	15.62	10.44	12.22	-17.68	-14.54	-34.38
Rajasthan	97.52	108.78	113.43	109.00	197.05	217.78	221.70	-4.10	-1.77	11.54
Tamil Nadu	2.88	2.41	1.31	2.28	5.78	4.70	2.54	84.27	85.03	-16.15
CBM	75.92	55.48	62.65	54.35	145.50	109.84	125.59	-11.44	-12.54	-26.92
Jharkhand (CBM)	0.56	0.43	0.18	0.35	1.11	0.78	0.44	142.70	79.77	-23.40
Madhya Pradesh (CBM)	36.00	28.96	31.69	27.88	66.90	56.83	62.84	-8.62	-9.56	-19.57
West Bengal (CBM)	39.36	26.09	30.78	26.13	77.49	52.22	62.31	-15.23	-16.19	-33.70
Offshore	237.21	231.74	311.58	195.10	428.15	426.84	588.05	-25.62	-27.41	-2.30
Eastern Offshore	103.79	84.04	149.56	85.07	197.75	169.11	307.33	-43.81	-44.97	-19.03
Gujarat Offshore	15.08	13.21	9.09	16.19	29.89	29.41	16.71	45.42	75.97	-12.37
Western Offshore	118.34	134.48	152.93	93.84	200.51	228.32	264.01	-12.06	-13.52	13.65
TOTAL (1+2+3)	2877.42	2738.92	2728.00	2655.89	5652.75	5394.81	5390.94	0.40	0.07	-4.81
CBM	75.92	55.48	62.65	54.35	145.50	109.84	125.59	-11.44	-12.54	-26.92
Onshore	947.98	833.82	849.55	824.49	1880.66	1658.30	1672.05	-1.85	-0.82	-12.04
Offshore	1853.52	1849.62	1815.81	1777.04	3626.59	3626.67	3593.30	1.86	0.93	-0.21

Note: Totals may not tally due to rounding off figures.

*: Provisional. **: Revised

CBM: Coal Bed Methane production.

Reasons for shortfall are indicated in the note.

MINISTRY OF PETROLEUM & NATURAL GAS

Annexure-III (Para-3)

Crude Oil Processed during the month of May, 2019 and cumulatively for the period April-May, 2019 vis-à-vis April-May, 2018

(Figures in Thousand Metric Tons)

Name of Undertaking/Unit	Planned production during the month*	Production during the			Cumulative Production			% variation over last year		% variation during the month under review over planned production
		Month under review *	Corresponding month of last year	Preceding month of current year **	(April-May)			During the month under	Upto the end of the period	
					Planned production during current year*	Actual production during current year *	Actual production during corresponding period of last year **			
(1)	(2)	(3)	(4)	(5)	(6)	(7)	(8)	(9)	(10)	(11)
A. Public Sector	12344.01	11896.24	12792.66	11263.33	24010.68	23159.56	24427.91	-7.01	-5.19	-3.63
1. IOC, Guwahati	74.00	74.16	91.93	74.71	149.00	148.87	181.94	-19.33	-18.17	0.22
2. IOC, Barauni	581.90	582.78	591.89	568.62	1150.90	1151.40	1164.44	-1.54	-1.12	0.15
3. IOC, Gujarat	823.00	817.11	1198.51	637.66	1461.00	1454.77	2443.36	-31.82	-40.46	-0.72
4. IOC, Haldia	708.97	703.71	638.91	684.22	1392.97	1387.93	1324.21	10.14	4.81	-0.74
5. IOC, Mathura	884.00	889.68	858.82	847.24	1731.00	1736.92	1705.48	3.59	1.84	0.64
6. IOC, Digboi	53.08	52.57	58.20	52.16	105.08	104.73	114.02	-9.68	-8.15	-0.96
7. IOC, Panipat	1367.30	1374.67	1384.82	1154.68	2522.30	2529.35	2736.22	-0.73	-7.56	0.54
8. IOC, Bongaigaon	195.61	196.55	196.57	198.33	393.61	394.88	380.76	-0.01	3.71	0.48
9. IOC, Paradip	1237.00	1235.48	1265.53	1316.82	2554.00	2552.29	1544.62	-2.37	65.24	-0.12
Total IOC	5924.86	5926.70	6285.17	5534.44	11459.86	11461.14	11595.05	-5.70	-1.15	0.03
10. BPCL, Mumbai	1320.00	1332.92	1231.50	1122.34	2440.00	2455.26	2477.95	8.24	-0.92	0.98
11. BPCL, Kochi	1380.00	1427.70	1448.93	1450.90	2830.00	2878.59	2713.51	-1.47	6.08	3.46
Total BPCL	2700.00	2760.62	2680.43	2573.24	5269.99	5333.85	5191.47	2.99	2.74	2.25
12. HPCL, Mumbai	725.00	532.16	733.11	306.99	1328.00	839.15	1435.03	-27.41	-41.52	-26.60
13. HPCL, Visakh	831.00	819.11	813.81	782.88	1635.00	1601.99	1578.98	0.65	1.46	-1.43
Total HPCL	1556.00	1351.27	1546.91	1089.86	2963.00	2441.14	3014.01	-12.65	-19.01	-13.16
14. CPCL, Manali	930.00	904.24	806.54	839.91	1830.00	1744.15	1633.47	12.11	6.78	-2.77
15. CPCL, CBR	0.00	0.00	34.68	0.00	0.00	0.00	70.02	-	-	-
Total CPCL	930.00	904.24	841.22	839.91	1830.00	1744.15	1703.48	7.49	2.39	-2.77
16. NRL, Numaligarh	259.10	223.31	213.79	240.70	509.80	464.01	438.24	4.45	5.88	-13.81
17. MRPL, Mangalore	970.00	722.30	1219.28	978.99	1970.00	1701.29	2473.05	-40.76	-31.21	-25.54
18. ONGC, Tatipaka	4.06	7.81	5.87	6.19	8.03	14.00	12.61	33.08	11.00	92.50
B. Joint Venture	1588.00	1787.38	1691.43	1721.66	3126.00	3509.03	3192.08	5.67	9.93	12.56
19. BORL, Bina	660.00	704.56	640.08	671.06	1300.00	1375.62	1102.43	10.07	24.78	6.75
20. HMEL, GGSR, Bhatinda	928.00	1082.82	1051.35	1050.60	1826.00	2133.42	2089.65	2.99	2.09	16.68
C. Private Sector	7757.00	7894.24	7757.00	7718.08	14473.94	15612.32	14473.94	1.77	7.87	1.77
21. RIL, Jamnagar	2782.67	2809.56	2782.67	2825.31	5468.48	5634.86	5468.48	0.97	3.04	0.97
22. RIL, SEZ	3184.62	3327.91	3184.62	3180.69	5485.90	6508.60	5485.90	4.50	18.64	4.50
Total RIL	5967.28	6137.46	5967.28	6006.00	10954.38	12143.46	10954.38	2.85	10.85	2.85
23. EOL, Vadinar	1789.72	1756.77	1789.72	1712.08	3519.55	3468.86	3519.55	-1.84	-1.44	-1.84
TOTAL(A+B+C)	21689.02	21577.85	22241.09	20703.06	41610.62	42280.91	42093.92	-2.98	0.44	-0.51

Note: Totals may not tally due to rounding off figures. *: Provisional. **:Revised

Reasons for shortfall are indicated in the note.

MINISTRY OF PETROLEUM & NATURAL GAS

Annexure-IV (Para 3.4)

Refinery-wise Capacity Utilisation during the month of May, 2019 and cumulatively for the period April-May, 2019 vis-à-vis April-May, 2018

(Figures in Thousand Metric Tons)

Name of Undertaking/Unit	May, 2019			May, 2018			Cumulative (April - May)					
	Prorated Installed Capacity	Actual Crude T'put *	% Utilisation of Installed Capacity	Prorated Installed Capacity	Actual Crude T'put	% Utilisation of Installed Capacity	2019-20			2018-19		
							Prorated Installed Capacity	Actual Crude T'put *	% Utilisation of Installed Capacity	Prorated Installed Capacity	Actual Crude T'put **	% Utilisation of Installed Capacity
(1)	(2)	(3)	(4)	(5)	(6)	(7)	(8)	(9)	(10)	(11)	(12)	(13)
A. Public Sector	12066.00	11896.24	98.59	12066.00	12792.66	106.02	23678.00	23159.56	97.81	23743.00	24427.91	102.88
1. IOC, Guwahati	85.00	74.16	87.25	85.00	91.93	108.16	167.00	148.87	89.14	167.00	181.94	108.94
2. IOC, Barauni	510.00	582.78	114.27	510.00	591.89	116.06	1000.00	1151.40	115.14	1003.00	1164.44	116.10
3. IOC, Gujarat	1164.00	817.11	70.20	1164.00	1198.51	102.96	2283.00	1454.77	63.72	2290.00	2443.36	106.70
4. IOC, Haldia	637.00	703.71	110.47	637.00	638.91	100.30	1250.00	1387.93	111.03	1253.00	1324.21	105.68
5. IOC, Mathura	679.00	889.68	131.03	679.00	858.82	126.48	1333.00	1736.92	130.30	1337.00	1705.48	127.56
6. IOC, Digboi	55.00	52.57	95.57	55.00	58.20	105.82	108.00	104.73	96.97	109.00	114.02	104.61
7. IOC, Panipat	1274.00	1374.67	107.90	1274.00	1384.82	108.70	2500.00	2529.35	101.17	2507.00	2736.22	109.14
8. IOC, Bongaigaon	200.00	196.55	98.28	200.00	196.57	98.29	392.00	394.88	100.73	393.00	380.76	96.89
9. IOC, Paradip	1274.00	1235.48	96.98	1274.00	1265.53	0.00	2500.00	2552.29	102.09	2507.00	1544.62	0.00
Total IOC	5877.00	5926.70	100.85	5877.00	6285.17	106.95	11533.00	11461.14	99.38	11565.00	11595.05	100.26
10. BPCL, Mumbai	1019.00	1332.92	130.81	1019.00	1231.50	120.85	2000.00	2455.26	122.76	2005.00	2477.95	123.59
11. BPCL, Kochi	1316.00	1427.70	108.49	1316.00	1448.93	110.10	2583.00	2878.59	111.44	2590.00	2713.51	104.77
Total BPCL	2336.00	2760.62	118.18	2336.00	2680.43	114.74	4583.00	5333.85	116.38	4596.00	5191.47	112.96
12. HPCL, Mumbai	637.00	532.16	83.54	637.00	733.11	115.09	1250.00	839.15	67.13	1253.00	1435.03	114.53
13. HPCL, Visakh	705.00	819.11	116.19	705.00	813.81	115.43	1383.00	1601.99	115.83	1387.00	1578.98	113.84
Total HPCL	1342.00	1351.27	100.69	1342.00	1546.91	115.27	2633.00	2441.14	92.71	2641.00	3014.01	114.12
14. CPCL, Manali	892.00	904.24	101.37	892.00	806.54	90.42	1750.00	1744.15	99.67	1755.00	1633.47	93.08
15. CPCL, CBR	85.00	0.00	0.00	85.00	34.68	40.80	167.00	0.00	0.00	167.00	70.02	41.93
Total CPCL	977.00	904.24	92.55	977.00	841.22	86.10	1917.00	-	-	-	1703.48	-
16. NRL, Numaligarh	255.00	223.31	87.57	255.00	213.79	83.84	500.00	464.01	92.80	501.00	438.24	87.47
17. MRPL, Mangalore	1274.00	722.30	56.70	1274.00	1219.28	95.70	2500.00	1701.29	68.05	2507.00	2473.05	98.65
18. ONGC, Tatipaka	6.00	7.81	130.13	6.00	5.87	97.78	11.00	14.00	127.27	11.00	12.61	114.66
B. Joint Venture	1622.00	1787.38	110.20	1469.00	1691.43	115.14	3183.00	3509.03	110.24	2891.00	3192.08	110.41
19. BORL, Bina	662.00	704.56	106.43	510.00	640.08	125.50	1300.00	1375.62	105.82	1003.00	1102.43	109.91
20. HMEL, GGSR, Bhatinda	960.00	1082.82	112.79	960.00	1051.35	109.52	1883.00	2133.42	113.30	1888.00	2089.65	110.68
C. Private Sector	7491.00	7894.24	105.38	7491.00	7757.00	103.55	14700.00	15612.32	106.21	14740.00	14473.94	98.19
21. RIL, Jamnagar	2803.00	2809.56	100.23	2803.00	2782.67	99.27	5500.00	5634.86	102.45	5515.00	5468.48	99.16
22. RIL, SEZ	2990.00	3327.91	111.30	2990.00	3184.62	106.51	5867.00	6508.60	110.94	5883.00	5485.90	93.25
Total RIL	5792.00	6137.46	105.96	5792.00	5967.28	103.03	11367.00	12143.46	106.83	11398.00	10954.38	96.11
23. EOL, Vadinar	1699.00	1756.77	103.40	1699.00	1789.72	105.34	3333.00	3468.86	104.08	3342.00	3519.55	105.31
TOTAL(A+B+C)	21179.00	21577.85	101.88	21026.00	22241.09	105.78	41561.00	42280.91	101.73	41374.00	42093.92	101.74

Note: Crude thruput in terms of crude oil processed. *: Provisional. **: Revised

MINISTRY OF PETROLEUM & NATURAL GAS

Annexure-V (Para 3.4)

Production of Petroleum Products during the month of May, 2019 and cumulatively for the period April-May, 2019 vis-à-vis April-May, 2018

(Figures in Thousand Metric Tons)

Name of Undertaking/Unit	Planned production during the month*	Production during the			Cumulative Production			% variation over last year		% variation during the month under review over planned production
		Month under review *	Corresponding month of last year	Preceding month of current year **	(April-May)			During the month under review	Upto the end of the period	
(1)	(2)	(3)	(4)	(5)	(6)	(7)	(8)	(9)	(10)	(11)
I. Refinery										
A. Public Sector	11611.77	11094.13	11924.17	10572.52	22597.91	21666.65	10821.77	-6.96	100.21	-4.46
1. IOC, Guwahati	74.13	103.23	103.05	100.46	167.15	203.70	104.18	0.18	95.53	39.26
2. IOC, Barauni	540.67	527.85	549.61	534.12	1069.50	1061.97	542.54	-3.96	95.74	-2.37
3. IOC, Gujarat	795.57	817.52	1134.92	474.14	1400.20	1291.66	1180.69	-27.97	9.40	2.76
4. IOC, Haldia	661.08	655.48	598.12	624.60	1298.86	1280.08	641.50	9.59	99.54	-0.85
5. IOC, Mathura	855.87	862.72	831.79	812.37	1677.87	1675.08	820.56	3.72	104.14	0.80
6. IOC, Digboi	53.14	53.04	59.94	53.78	104.87	106.82	56.47	-11.50	89.15	-0.18
7. IOC, Panipat	1360.85	1412.69	1395.08	1174.52	2511.98	2587.21	1351.20	1.26	91.47	3.81
8. IOC, Bongaigaon	182.34	200.04	184.41	201.06	385.31	401.11	341.74	8.47	17.37	9.71
9. IOC, Paradip	1110.05	1083.49	1143.16	1208.22	2296.69	2291.71	1328.44	-5.22	72.51	-2.39
Total IOC	5633.71	5716.06	6000.09	5183.27	10912.43	10899.33	11039.83	-4.73	-1.27	1.46
10. BPCL, Mumbai	1263.00	1192.83	1180.07	1090.83	2339.00	2384.66	2384.02	1.08	-4.21	-5.56
11. BPCL, Kochi	1286.88	1274.80	1226.29	1325.27	2638.09	2600.07	2387.03	3.96	8.92	-0.94
Total BPCL	2549.88	2467.62	2406.36	2416.10	4977.09	4883.72	4771.04	2.55	2.36	-3.23
12. HPCL, Mumbai	683.00	494.37	655.27	284.28	1249.00	778.65	1314.78	-24.56	-40.78	-27.62
13. HPCL, Visakh	768.00	757.17	762.17	716.89	1512.00	1474.07	1501.04	-0.66	-1.80	-1.41
Total HPCL	1451.00	1251.54	1417.44	1001.18	2761.00	2252.71	2815.82	-11.70	-20.00	-13.75
14. CPCL, Manali	839.45	792.68	724.22	785.38	1651.84	1578.06	1434.19	9.45	10.03	-5.57
15. CPCL, CBR	0.00	0.00	34.74	0.88	0.00	0.88	70.10	-	-	-
Total CPCL	839.45	792.68	758.96	786.26	1651.84	1578.95	1504.29	4.44	4.96	-5.57
16. NRL, Numaligarh	253.83	217.69	215.23	219.72	499.53	437.42	436.29	1.14	0.26	-14.24
17. MRPL, Mangalore	880.00	641.37	1120.36	960.15	1788.30	1601.52	2166.34	-42.75	-26.07	-27.12
18. ONGC, Tatipaka	3.90	7.17	5.73	5.83	7.72	13.00	12.33	25.07	5.41	83.79
B. Joint Venture	1460.18	1651.60	1599.50	1611.58	2874.90	3263.17	2974.33	3.26	9.71	13.11
19. BORL, Bina	587.18	638.12	584.10	605.69	1156.90	1243.81	992.15	9.25	25.36	8.67
20. HMEL, GGSR, Bhatinda	873.00	1013.48	1015.40	1005.88	1718.00	2019.36	1982.18	-0.19	1.88	16.09
C. Private Sector	8376.89	8794.37	8376.89	8444.95	15967.33	17239.31	15967.33	4.98	7.97	4.98
21. RIL, Jamnagar	2844.76	3038.53	2844.76	2931.62	5668.99	5970.16	5668.99	6.81	5.31	6.81
22. RIL, SEZ	3825.77	4094.98	3825.77	3859.26	6883.91	7954.24	6883.91	7.04	15.55	7.04
Total RIL	6670.53	7133.51	6670.53	6790.88	12552.90	13924.39	12552.90	6.94	10.93	6.94
23. EOL, Vadinar	1706.37	1660.85	1706.37	1654.07	3414.43	3314.92	3414.43	-2.67	-2.91	-2.67
TOTAL(A+B+C)	21448.85	21540.09	21900.56	20629.04	41440.14	42169.13	41687.60	-1.65	1.16	0.43
II. Fractionators					0.00					
ONGC	278.50	299.91	279.91	300.27	547.47	600.18	550.20	7.15	9.08	7.69
OIL	100.27	103.97	99.94	112.35	200.55	216.32	212.40	4.03	1.85	3.69
GAIL	3.10	3.21	3.33	3.17	6.20	6.38	6.47	-3.72	-1.45	3.42
D. Total Fractionators	381.88	407.09	383.18	415.80	754.22	822.88	769.08	6.24	7.00	6.60
Grand Total (A+B+C+D)	21830.72	21947.18	22283.75	21044.84	42194.36	42992.02	42456.67	-1.51	1.26	0.53

Note: Totals may not tally due to rounding off figures.

*: Provisional. **: Revised