

**Government of India**  
**Ministry of Petroleum and Natural Gas**  
**Economic & Statistics Division**

\*\*\*\*\*

New Delhi  
Dated the 22<sup>nd</sup> June, 2017

**Monthly Production Report**  
**May, 2017**

**Crude Oil**

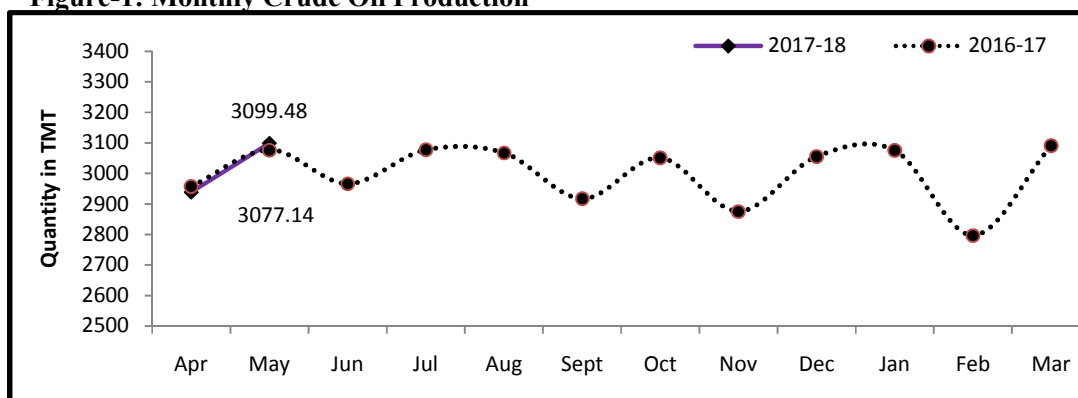
1. Crude oil production<sup>1</sup> during May, 2017 was 3099.48 TMT which is 0.35% lower than target but 0.73% higher when compared with May 2016. Cumulative crude oil production during April-May, 2017 was 6038.33 TMT which is 1.16% lower than target for the period but 0.07% higher than production during corresponding period of last year. Unit-wise and state-wise crude oil production is given at Annexure-I. Unit-wise crude oil production for the month of May, 2017 and cumulatively for the period April-May, 2017 vis-à-vis same period of last year has been shown in Table-1 and month-wise in Figure-1.

**Table-1: Crude Oil Production (in TMT)**

Oil Company	Target	May (Month)				April-May (Cumulative)			
	2017-18 (Apr-Mar)*	2017-18		2016-17	% over last year	2017-18		2016-17	% over last year
		Target*	Prod.*	Prod.		Target*	Prod.*	Prod.	
ONGC	23071.00	1915.85	1934.59	1887.13	102.52	3761.50	3781.75	3689.08	102.51
OIL	3734.00	291.75	287.91	271.40	106.08	571.75	561.15	532.81	105.32
PSC Fields	10562.00	902.68	876.98	918.61	95.47	1776.24	1695.43	1812.51	93.54
<b>Total</b>	<b>37367.00</b>	<b>3110.28</b>	<b>3099.48</b>	<b>3077.14</b>	<b>100.73</b>	<b>6109.48</b>	<b>6038.33</b>	<b>6034.40</b>	<b>100.07</b>

Note: 1. Target for the year 2017-18 as reported by CPSEs is provisional, as MoU target for the year 2017-18 is yet to be finalized.  
2. Totals may not tally due to rounding off. \* : Provisional

**Figure-1: Monthly Crude Oil Production**



<sup>1</sup>Including condensate

Unit-wise production details with reasons for shortfall have been given in following sub-sections:

- 1.1 Crude oil production by ONGC during May, 2017 was 1934.59 TMT which is 0.98% higher than the monthly target and 2.52% higher when compared with May, 2016. Cumulative crude oil production by ONGC during April-May, 2017 was 3781.75 TMT which is 0.54% higher than target for the period and 2.51% higher than production during corresponding period of last year.
- 1.2 Crude oil production by OIL during May, 2017 was 287.91 TMT which is 1.31% lower than monthly target but 6.08% higher than production in May, 2016. Cumulative crude oil production by OIL during April-May, 2017 was 561.15 TMT which is 1.85% lower than target for the period but 5.32% higher than production during corresponding period of last year. Reasons for shortfall in production are as under:
  - Less than planned contribution from high producing areas like Greater Hapjan, Shalmari, Chandmari and Moran fields primarily on account of rise in water cut.
  - Less than planned contribution from new drilling wells and work over wells.
- 1.3 Crude oil production by Pvt/JVs during May, 2017 was 876.98 TMT which is 2.85% lower than the monthly target and 4.53% lower than May, 2016. Cumulative crude oil production by Pvt/JVs during April-May, 2017 was 1695.43 TMT which is 4.55% lower than target for the period and 6.46% lower than the production during corresponding period of last year. Reasons for shortfall in production are as under:
  - RJ-ON-90/1: Around 100 wells are closed either due to high water cut or require WOJ and poor reservoir performance of Bhagyam.
  - Panna-Mukta: MB, MA wells closed for riser line pigging on 13-14.05.2017 and PH-3, PB-2,6& PE-3 underperformance.
  - Natural Decline in Ravva.
  - CY-ONN-2002/2: Test production from 5 oil wells. PML not yet granted.
  - CB-ONN-2004/2: Underperformance of wells.

## **Natural Gas**

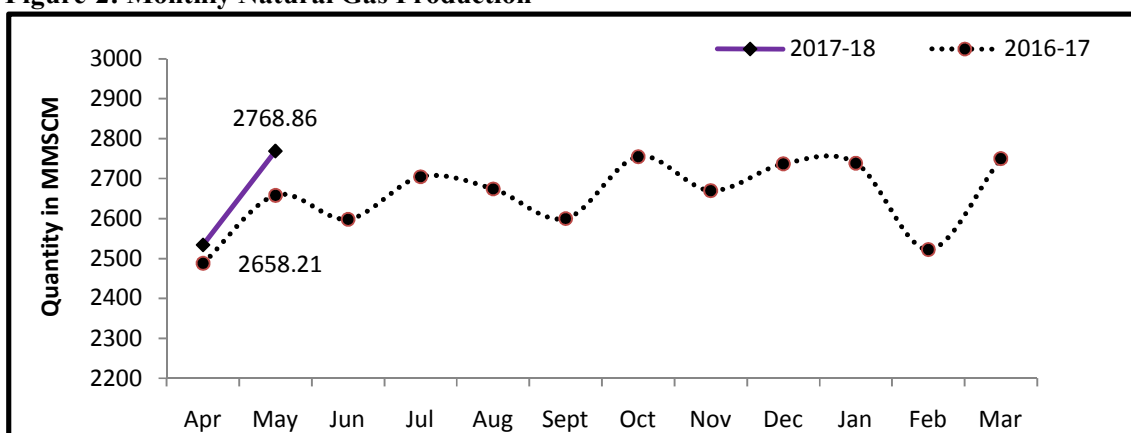
- 2 Natural gas production during May, 2017 was 2768.89 MMSCM which is 5.19% lower than the target for the month but 4.16% higher when compared with May, 2016. Cumulative natural gas production during April-May, 2017 was 5302.50 MMSCM which is 7.13% lower than target for the period but 3.04% higher than the production during corresponding period of last year. Unit-wise and state-wise natural gas production is given at Annexure-II. Unit-wise natural gas production for the month of May, 2017 and cumulatively for the period April-May, 2017 vis-à-vis same period of last year has been shown in Table-2 and month-wise in Figure-2.

**Table-2: Natural Gas Production (MMSCM)**

Oil Company	Target	May (Month)				April-May (Cumulative)			
	2017-18 (Apr-Mar)*	2017-18		2016-17	% over last year	2017-18		2016-17	% over last year
		Target*	Prod.*	Prod.		Target*	Prod.*	Prod.	
ONGC	24208.00	1997.46	1963.62	1792.89	109.52	3896.52	3754.60	3423.80	109.66
OIL	3000.00	253.16	244.89	239.11	102.41	496.71	486.17	489.47	99.33
PSC Fields	8034.00	669.88	560.35	626.21	89.48	1316.38	1061.74	1232.98	86.11
<b>Total</b>	<b>35242.00</b>	<b>2920.50</b>	<b>2768.86</b>	<b>2658.21</b>	<b>104.16</b>	<b>5709.61</b>	<b>5302.50</b>	<b>5146.25</b>	<b>103.04</b>

Note: 1. Target for the year 2017-18 as reported by CPSEs is provisional, as MoU target for the year 2017-18 is yet to be finalized.  
 2. Totals may not tally due to rounding off. \*: Provisional

**Figure-2: Monthly Natural Gas Production**



2.1 Natural gas production by ONGC during May, 2017 was 1963.62 MMSCM which is 1.69% lower than the monthly target but 9.52% higher when compared with May, 2016. Cumulative natural gas production by ONGC during April-May, 2017 was 3754.60 MMSCM which is 3.64% lower than the cumulative target but 9.66% higher than the production during the corresponding period of the last year. Reasons for shortfall in production are as under:

- Less production from C 24 cluster, C-26 cluster and Daman due to closure of wells for carrying out repair job in line from TPP Process Complex to South Bassein Heera Trunk Line (SBHT).

2.2 Natural gas production by OIL during May, 2017 was 244.89 MMSCM which is 3.27% lower than the monthly target but 2.41% higher than May, 2016. Cumulative natural gas production by OIL during April-May, 2017 was 486.17 MMSCM which is 2.12% lower than the cumulative target and 0.67% lower than the production during the corresponding period of last year.

2.3 Natural gas production by Pvt/JVs during May, 2017 was 560.35 MMSCM which is 16.35% lower than the monthly target and 10.52% lower when compared with May, 2016.

Cumulative natural gas production by Pvt/JVs during April-May, 2017 was 1061.74 MMSCM which is 19.34% lower than the cumulative target and 13.89% lower than the production during the corresponding period of last year. Reasons for shortfall in production are as under:

- Underperformance of wells in KG- OSN-2001/3
- Underperformance of Sohagpur West CBM block, few wells closed for planned maintenance & refrac job in Raniganj East CBM block.
- AAP-ON-94/1 (HOEC): Production deferred due to delay in grant of PML.
- Closure of 2 wells in D1D3 field in KG-DWN-98/3.

### Refinery Production (in terms of crude oil processed)

3 Refinery production during May, 2017 was 20826.73TMT which is 9.56% higher than the target for the month and 4.39% higher when compared with May, 2016. Cumulative production during April-May, 2017 was 40840.58 TMT which is 4.78% higher than the target for the period and 1.83% higher than the production during corresponding period of last year. Unit-wise production is given at Annexure-III. Company-wise production for the month of May, 2017 and cumulatively for the period April-May, 2017 vis-à-vis same period of last year has been shown in Table-3 and month-wise in Figure-3.

**Table 3: Refinery Production (TMT)**

Oil Company	Target	May (Month)				April-May (Cumulative)			
	2017-18 (Apr-Mar)*	2017-18		2016-17	% over last year	2017-18		2016-17	% over last year
		Target*	Prod.*	Prod.		Target*	Prod.*	Prod.	
<b>CPSEs</b>	<b>139090</b>	<b>11767.55</b>	<b>12453.04</b>	<b>11570.98</b>	<b>107.62</b>	<b>22973.17</b>	<b>23606.80</b>	<b>22707.57</b>	103.96
IOCL	65750	5794.00	6259.08	5601.54	111.74	11336.00	11791.40	10914.61	108.03
BPCL	27000	2050.00	2123.81	2101.85	101.04	4000.00	4094.70	4142.69	98.84
HPCL	17309	1499.03	1554.08	1538.59	101.01	2846.80	3004.22	3056.28	98.30
CPCL	10300	842.47	904.14	851.82	106.14	1708.56	1625.05	1727.56	94.07
NRL	2670	226.652	239.577	238.340	100.52	446.18	470.47	454.87	103.43
MRPL	16000	1350.000	1365.164	1232.446	110.77	2625.00	2607.91	2398.36	108.74
ONGC	62	5.402	7.201	6.400	112.50	10.63	13.06	13.21	98.93
<b>JVs</b>	<b>15201</b>	<b>525.000</b>	<b>635.489</b>	<b>1561.685</b>	<b>40.69</b>	<b>1764.00</b>	<b>2007.93</b>	<b>3015.45</b>	<b>66.59</b>
BORL	6000	525.00	635.49	616.51	103.08	1050.00	1186.29	1150.09	103.15
HMEL	9201	0.00	0.00	945.17	0.00	714.00	821.64	1865.36	44.05
<b>Private</b>	<b>90480</b>	<b>6716.70</b>	<b>7738.20</b>	<b>6817.40</b>	<b>113.51</b>	<b>14241.04</b>	<b>15225.85</b>	<b>14382.72</b>	<b>105.86</b>
RIL	70174	5038.83	5963.14	5038.83	118.34	10885.31	11763.29	10885.31	108.07
EOL	20306	1677.87	1775.05	1778.56	99.80	3355.733	3462.565	3497.412	99.00
<b>TOTAL</b>	<b>244771</b>	<b>19009.25</b>	<b>20826.73</b>	<b>19950.07</b>	<b>104.39</b>	<b>38978.21</b>	<b>40840.58</b>	<b>40105.74</b>	<b>101.83</b>

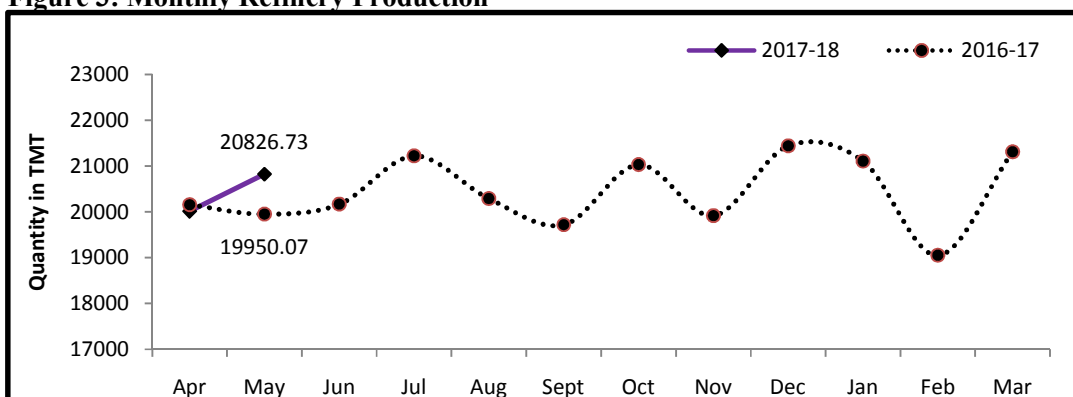
Note: 1. MoU Target for the year 2017-18 is yet to be finalized.

2. Totals may not tally due to rounding off.

\*: Provisional

3. HMEL Refinery undergone major turnaround during Apr-Jun, 2017

**Figure 3: Monthly Refinery Production**



3.1 CPSE Refineries' production during May, 2017 was 12453.04TMT which is 5.83% higher than the target for the month and 7.62% higher than the production achieved in the corresponding month of last year. Cumulative production by CPSE refineries during April-May, 2017 was 23606.80 TMT which is 2.76% higher than the target for the period and 3.96% higher than the production during corresponding period of last year. Reasons for shortfall of refinery production in some CPSE refineries are as under:

- IOCL, Barauni: Lower due to Naphtha containment and switchover to BS-IV fuel.
- IOCL, Gujarat: Lower due to BS-IV switchover and to facilitate ISD depletion before M&I S/D.
- IOCL, Haldia: Lower due to High VGO stock.
- IOCL, Bongaigaon: Lower due to High DHDT intermediate Stock.
- CPCL, Manali: Lower than target due to CDU-3/HGU/OHCU shutdown (equipment problem).
- CPCL, CBR: Lower than target due to product upliftment constraints.
- MRPL, Mangalore: Crude reduced due to Crude Vessel (VLCC) arrival delayed by 4 days and turnaround shutdown job advanced by 2 days.

3.2 Production in JV refineries during May, 2017 was 635.49 TMT which is 21.05% higher than the target for the month but 59.31% lower than the production achieved in the corresponding month of last year. Cumulative production by JVs refineries during April-May, 2017 was 2007.93 TMT which is 13.83% higher than the target for the period but 33.41% lower than the production during corresponding period of last year. The major reason for shortfall in production was major turnaround underway in HMEL refinery during April - June, 2017.

3.3 Production in private refineries during May, 2017 was 7738.20TMT which is 15.21% higher than the target for the month and 13.51% higher when compared with May, 2016. Cumulative production by private refineries during April-May, 2017 was 15225.85 TMT which is 6.92% higher than the target for the period and 5.86% higher than the production during corresponding period of last year.

3.4 Refinery-wise details of the capacity utilization and production of petroleum products during the month of May, 2017 and cumulatively for the period April-May, 2017 vis-à-vis April-May, 2016 are given at Annexures - IV and V respectively.

\*\*\*\*\*

**MINISTRY OF PETROLEUM & NATURAL GAS**

Annexure-I

**Crude Oil Production during the month of May, 2017 and cumulatively for the period April-May, 2017 vis-à-vis April-May, 2016**

(Para 1)

(Qty: '000' Tonnes)

Name of Undertaking/Unit/State	Planned production during the month*	Production during the			Cumulative Production			% variation over last year		% variation during the month under review over planned production
		Month under review *	Corresponding month of last year **	Preceding month of current year **	(April-May)			During the month under review	Upto the end of the period	
					Planned production during current year*	Actual production during current year *	Actual production during corresponding period of last year **			
(1)	(2)	(3)	(4)	(5)	(6)	(7)	(8)	(9)	(10)	(11)
<b>1. ONGC</b>	<b>1915.848</b>	<b>1934.594</b>	<b>1887.130</b>	<b>1847.157</b>	<b>3761.500</b>	<b>3781.751</b>	<b>3689.081</b>	<b>2.52</b>	<b>2.51</b>	<b>0.98</b>
<b>Onshore</b>	<b>504.349</b>	<b>513.178</b>	<b>495.442</b>	<b>498.482</b>	<b>991.444</b>	<b>1011.660</b>	<b>974.068</b>	<b>3.58</b>	<b>3.86</b>	<b>1.75</b>
Andhra Pradesh	23.863	28.080	21.799	28.955	47.410	57.035	42.680	28.81	33.63	17.67
Assam ^	85.869	83.812	78.415	80.028	168.351	163.840	155.688	6.88	5.24	-2.40
Gujarat	375.649	380.155	375.746	368.348	738.136	748.503	736.506	1.17	1.63	1.20
Tamil Nadu	18.968	21.131	19.482	21.151	37.547	42.282	39.194	8.46	7.88	11.40
<b>Offshore</b>	<b>1411.499</b>	<b>1421.416</b>	<b>1391.688</b>	<b>1348.675</b>	<b>2770.056</b>	<b>2770.091</b>	<b>2715.013</b>	<b>2.14</b>	<b>2.03</b>	<b>0.70</b>
Eastern Offshore	6.778	0.708	1.109	0.778	13.453	1.486	2.730	-36.16	-45.57	-89.55
Western Offshore	1273.138	1302.484	1263.100	1240.293	2500.768	2542.777	2488.782	3.12	2.17	2.31
Condensates	131.583	118.224	127.479	107.604	255.835	225.828	223.501	-7.26	1.04	-10.15
<b>2. OIL (Onshore)</b>	<b>291.745</b>	<b>287.912</b>	<b>271.404</b>	<b>273.236</b>	<b>571.749</b>	<b>561.148</b>	<b>532.811</b>	<b>6.08</b>	<b>5.32</b>	<b>-1.31</b>
Assam	291.137	287.271	270.740	272.614	570.561	559.885	531.503	6.11	5.34	-1.33
Arunachal Pradesh	0.608	0.641	0.664	0.622	1.188	1.263	1.308	-3.46	-3.44	5.43
<b>3. DGH (Private / JVC)</b>	<b>902.682</b>	<b>876.977</b>	<b>918.605</b>	<b>818.452</b>	<b>1776.235</b>	<b>1695.429</b>	<b>1812.505</b>	<b>-4.53</b>	<b>-6.46</b>	<b>-2.85</b>
<b>Onshore</b>	<b>749.269</b>	<b>700.784</b>	<b>726.934</b>	<b>676.768</b>	<b>1474.357</b>	<b>1377.552</b>	<b>1436.492</b>	<b>-3.60</b>	<b>-4.10</b>	<b>-6.47</b>
Arunachal Pradesh	4.419	3.798	3.975	3.776	8.696	7.574	7.888	-4.45	-3.98	-14.05
Assam	0.856	0.000	0.000	0.000	1.684	0.000	0.000	-	-	-
Gujarat	16.609	11.606	11.484	10.694	32.663	22.300	23.135	1.06	-3.61	-30.12
Rajasthan	716.706	677.993	710.215	656.292	1410.301	1334.285	1403.016	-4.54	-4.90	-5.40
Tamil Nadu	10.679	7.387	1.260	6.006	21.013	13.393	2.453	486.27	445.98	-30.83
<b>Offshore</b>	<b>153.413</b>	<b>176.193</b>	<b>191.671</b>	<b>141.684</b>	<b>301.878</b>	<b>317.877</b>	<b>376.013</b>	<b>-8.08</b>	<b>-15.46</b>	<b>14.85</b>
Eastern Offshore	67.526	78.768	84.830	70.876	132.874	149.644	166.066	-7.15	-9.89	16.65
Gujarat Offshore	25.709	32.303	34.425	26.995	50.589	59.298	68.054	-6.16	-12.87	25.65
Western Offshore	60.178	65.122	72.416	43.813	118.415	108.935	141.893	-10.07	-23.23	8.22
<b>GRAND TOTAL (1+2+3)</b>	<b>3110.275</b>	<b>3099.483</b>	<b>3077.139</b>	<b>2938.845</b>	<b>6109.484</b>	<b>6038.328</b>	<b>6034.397</b>	<b>0.73</b>	<b>0.07</b>	<b>-0.35</b>
Onshore	1493.720	1501.874	1493.780	1448.486	3037.550	2950.360	2943.371	0.54	0.24	0.55
Offshore	1555.422	1597.609	1583.359	1490.359	3071.934	3087.968	3091.026	0.90	-0.10	2.71

Note: Totals may not tally due to rounding off figures.

^: Includes crude oil production of Tripura

\*: Provisional. \*\*: Revised

**MINISTRY OF PETROLEUM & NATURAL GAS**

Annexure-II

**Natural Gas Production during the month of May, 2017 and cumulatively for the period April-May, 2017 vis-à-vis April-May, 2016**

(Para 2)

(Qty: Million Cubic Meters)

Name of Undertaking/Unit/State	Planned production during the month*	Production during the			Cumulative Production (April-May)			% variation over last year		% variation during the month under review over planned production
		Month under review *	Corresponding month of last year **	Preceding month of current year **	Planned production during current year*	Actual production during current year *	Actual production during corresponding period of last year **	During the month under review	Upto the end of the period	
(1)	(2)	(3)	(4)	(5)	(6)	(7)	(8)	(9)	(10)	(11)
<b>1. ONGC</b>	<b>1997.456</b>	<b>1963.616</b>	<b>1792.887</b>	<b>1790.980</b>	<b>3896.518</b>	<b>3754.596</b>	<b>3423.803</b>	<b>9.52</b>	<b>9.66</b>	<b>-1.69</b>
<b>Onshore</b>	<b>465.311</b>	<b>475.360</b>	<b>397.982</b>	<b>463.134</b>	<b>915.152</b>	<b>938.494</b>	<b>790.678</b>	<b>19.44</b>	<b>18.69</b>	<b>2.16</b>
Andhra Pradesh	80.576	72.900	57.670	72.157	158.906	145.057	112.699	26.41	28.71	-9.53
Assam	36.547	41.194	35.702	40.261	71.801	81.455	71.192	15.38	14.42	12.72
Gujarat	118.267	137.771	105.408	133.577	235.054	271.348	223.321	30.70	21.51	16.49
Rajasthan	0.425	0.493	0.222	0.161	0.836	0.654	0.484	122.07	35.12	16.00
Tamil Nadu	98.713	92.421	77.905	95.819	195.643	188.240	162.116	18.63	16.11	-6.37
Tripura	130.783	130.581	121.075	121.159	252.912	251.740	220.866	7.85	13.98	-0.15
<b>Offshore</b>	<b>1532.145</b>	<b>1488.256</b>	<b>1394.905</b>	<b>1327.846</b>	<b>2981.366</b>	<b>2816.102</b>	<b>2633.125</b>	<b>6.69</b>	<b>6.95</b>	<b>-2.86</b>
Eastern Offshore	51.098	51.935	8.542	52.064	101.198	103.999	12.259	508.00	748.35	1.64
Western Offshore	1481.047	1436.321	1386.363	1275.782	2880.168	2712.103	2620.866	3.60	3.48	-3.02
<b>2. OIL</b>	<b>253.160</b>	<b>244.888</b>	<b>239.114</b>	<b>241.278</b>	<b>496.714</b>	<b>486.166</b>	<b>489.465</b>	<b>2.41</b>	<b>-0.67</b>	<b>-3.27</b>
Assam	231.861	225.883	217.019	222.672	454.803	448.555	445.129	4.08	0.77	-2.58
Arunachal Pradesh	1.085	0.987	1.029	0.971	2.135	1.958	1.993	-4.08	-1.76	-9.03
Rajasthan	20.214	18.018	21.066	17.635	39.776	35.653	42.343	-14.47	-15.80	-10.86
<b>3. DGH (Private / JVC)</b>	<b>669.883</b>	<b>560.354</b>	<b>626.210</b>	<b>501.387</b>	<b>1316.378</b>	<b>1061.741</b>	<b>1232.982</b>	<b>-10.52</b>	<b>-13.89</b>	<b>-16.35</b>
<b>Onshore</b>	<b>125.040</b>	<b>108.188</b>	<b>108.663</b>	<b>108.862</b>	<b>246.112</b>	<b>217.050</b>	<b>215.016</b>	<b>-0.44</b>	<b>0.95</b>	<b>-13.48</b>
Arunachal Pradesh	0.687	1.368	1.351	1.359	1.371	2.727	2.417	1.26	12.83	99.13
Assam	19.364	0.000	0.000	0.000	38.104	0.000	0.000	-	-	-
Gujarat	6.475	6.963	8.394	6.657	12.787	13.620	16.263	-17.05	-16.25	7.54
Rajasthan	97.149	98.879	98.798	100.028	191.164	198.907	196.098	0.08	1.43	1.78
Tamil Nadu	1.365	0.978	0.120	0.818	2.686	1.796	0.238	715.00	654.62	-28.35
<b>CBM</b>	<b>107.999</b>	<b>48.470</b>	<b>42.646</b>	<b>46.263</b>	<b>212.336</b>	<b>94.733</b>	<b>79.885</b>	<b>13.66</b>	<b>18.59</b>	<b>-55.12</b>
Jharkhand (CBM)	0.305	0.376	0.212	0.334	0.600	0.710	0.407	77.36	74.45	23.28
Madhya Pradesh (CBM)	39.918	1.947	0.513	2.463	78.548	4.410	0.729	279.53	504.94	-95.12
West Bengal (CBM)	67.776	46.147	41.921	43.466	133.188	89.613	78.749	10.08	13.80	-31.91
<b>Offshore</b>	<b>436.844</b>	<b>403.696</b>	<b>474.901</b>	<b>346.262</b>	<b>857.930</b>	<b>749.958</b>	<b>938.081</b>	<b>-14.99</b>	<b>-20.05</b>	<b>-7.59</b>
Eastern Offshore	278.275	228.145	301.777	228.785	547.573	456.930	594.945	-24.40	-23.20	-18.01
Gujarat Offshore	4.655	7.166	6.712	5.056	7.494	12.222	13.032	6.76	-6.22	53.94
Western Offshore	153.914	168.385	166.412	112.421	302.863	280.806	330.104	1.19	-14.93	9.40
<b>TOTAL (1+2+3)</b>	<b>2920.499</b>	<b>2768.858</b>	<b>2658.211</b>	<b>2533.645</b>	<b>5709.610</b>	<b>5302.503</b>	<b>5146.250</b>	<b>4.16</b>	<b>3.04</b>	<b>-5.19</b>
CBM	58.176	48.470	42.646	46.263	212.336	94.733	79.885	13.66	18.59	-16.68
Onshore	778.319	828.436	745.759	813.274	1657.978	1641.710	1495.159	11.09	9.80	6.44
Offshore	1889.392	1891.952	1869.806	1674.108	3839.296	3566.060	3571.206	1.18	-0.14	0.14

Note: Totals may not tally due to rounding off figures.

\*: Provisional. \*\*: Revised

CBM: Coal Bed Methane production.

Reasons for shortfall are indicated in the note.



MINISTRY OF PETROLEUM & NATURAL GAS

Annexure-III

Refinery Production (in terms of crude oil processed) during the month of May, 2017 and cumulatively for the period April-May, 2017 vis-à-vis April-May, 2016

(Para 3)

(Qty: '000' Tonnes)

Name of Undertaking/Unit	Planned production during the month*	Production during the			Cumulative Production			% variation over last year		% variation during the month under review over planned production
		Month under review *	Corresponding month of last year	Preceding month of current year **	(April-May)			During the month under	Upto the end of the period	
					Planned production during current year*	Actual production during current year *	Actual production during corresponding period of last year **			
(1)	(2)	(3)	(4)	(5)	(6)	(7)	(8)	(9)	(10)	(11)
<b>A. Public Sector</b>	<b>11767.553</b>	<b>12453.043</b>	<b>11570.984</b>	<b>11153.760</b>	<b>22973.170</b>	<b>23606.803</b>	<b>22707.568</b>	<b>7.62</b>	<b>3.96</b>	<b>5.83</b>
1. IOC, Guwahati	75.000	86.457	72.838	87.591	147.000	174.048	148.262	18.70	17.39	15.28
2. IOC, Barauni	545.000	533.297	576.665	558.278	1075.000	1091.575	1135.929	-7.52	-3.90	-2.15
3. IOC, Gujarat	920.000	1168.872	1240.312	1125.205	2030.000	2294.077	2455.274	-5.76	-6.57	27.05
4. IOC, Haldia	700.000	707.317	713.191	658.631	1375.000	1365.948	1405.520	-0.82	-2.82	1.05
5. IOC, Mathura	800.000	825.283	813.746	796.073	1575.000	1621.356	1611.229	1.42	0.63	3.16
6. IOC, Digboi	44.000	54.473	45.866	53.135	84.000	107.608	97.621	18.77	10.23	23.80
7. IOC, Panipat	1360.000	1402.066	1386.002	1326.318	2675.000	2728.384	2702.008	1.16	0.98	3.09
8. IOC, Bongaigaon	200.000	174.305	214.646	200.595	375.000	374.900	426.228	-18.79	-12.04	-12.85
9. IOC, Paradip	1150.000	1307.014	538.270	726.486	2000.000	2033.500	932.538	-	-	13.65
<b>Total IOC</b>	<b>5794.000</b>	<b>6259.084</b>	<b>5601.536</b>	<b>5532.312</b>	<b>11336.000</b>	<b>11791.396</b>	<b>10914.609</b>	<b>11.74</b>	<b>8.03</b>	<b>8.03</b>
10. BPCL, Mumbai	1000.000	1017.867	1169.347	956.478	1910.000	1974.345	2314.870	-12.95	-14.71	1.79
11. BPCL, Kochi	1050.000	1105.938	932.506	1014.412	2090.000	2120.350	1827.822	18.60	16.00	5.33
<b>Total BPCL</b>	<b>2050.000</b>	<b>2123.805</b>	<b>2101.853</b>	<b>1970.890</b>	<b>4000.000</b>	<b>4094.695</b>	<b>4142.692</b>	<b>1.04</b>	<b>-1.16</b>	<b>3.60</b>
12. HPCL, Mumbai	679.959	719.811	723.548	706.834	1336.973	1426.645	1437.455	-0.52	-0.75	5.86
13. HPCL, Visakh	819.075	834.265	815.045	743.306	1509.825	1577.571	1618.825	2.36	-2.55	1.85
<b>Total HPCL</b>	<b>1499.034</b>	<b>1554.076</b>	<b>1538.593</b>	<b>1450.140</b>	<b>2846.798</b>	<b>3004.216</b>	<b>3056.280</b>	<b>1.01</b>	<b>-1.70</b>	<b>3.67</b>
14. CPCL, Manali	800.000	862.548	802.206	684.768	1625.000	1547.316	1622.255	7.52	-4.62	7.82
15. CPCL, CBR	42.466	41.588	49.610	36.144	83.562	77.732	105.301	-16.17	-26.18	-2.07
<b>Total CPCL</b>	<b>842.466</b>	<b>904.136</b>	<b>851.816</b>	<b>720.912</b>	<b>1708.562</b>	<b>1625.048</b>	<b>1727.556</b>	<b>6.14</b>	<b>-5.93</b>	<b>7.32</b>
16. NRL, Numaligarh	226.652	239.577	238.340	230.897	446.181	470.474	454.870	0.52	3.43	5.70
17. MRPL, Mangalore	1350.000	1365.164	1232.446	1242.745	2625.000	2607.909	2398.356	10.77	8.74	1.12
18. ONGC, Tatipaka	5.402	7.201	6.400	5.864	10.629	13.065	13.206	12.50	-1.07	33.30
<b>B. Joint Venture</b>	<b>525.000</b>	<b>635.489</b>	<b>1561.685</b>	<b>1372.442</b>	<b>1764.000</b>	<b>2007.931</b>	<b>3015.450</b>	<b>-59.31</b>	<b>-33.41</b>	<b>21.05</b>
19. BORL, Bina	525.000	635.489	616.515	550.803	1050.000	1186.292	1150.091	3.08	3.15	21.05
20. HMEL, GGSR, Bhatinda	0.000	0.000	945.170	821.639	714.000	821.639	1865.359	-100.00	-55.95	-
<b>C. Private Sector</b>	<b>6716.702</b>	<b>7738.195</b>	<b>6817.399</b>	<b>7487.656</b>	<b>14241.045</b>	<b>15225.851</b>	<b>14382.723</b>	<b>13.51</b>	<b>5.86</b>	<b>15.21</b>
21. RIL, Jamnagar	2856.327	2741.825	2856.327	2665.306	5588.277	5407.131	5588.277	-4.01	-3.24	-4.01
22. RIL, SEZ	2182.508	3221.316	2182.508	3134.839	5297.034	6356.155	5297.034	47.60	19.99	47.60
<b>Total RIL</b>	<b>5038.835</b>	<b>5963.141</b>	<b>5038.835</b>	<b>5800.145</b>	<b>10885.311</b>	<b>11763.286</b>	<b>10885.311</b>	<b>18.34</b>	<b>8.07</b>	<b>18.34</b>
23. EOL, Vadinar	1677.867	1775.054	1778.564	1687.511	3355.733	3462.565	3497.412	-0.20	-1.00	5.79
<b>TOTAL(A+B+C)</b>	<b>19009.255</b>	<b>20826.727</b>	<b>19950.068</b>	<b>20013.858</b>	<b>38978.214</b>	<b>40840.584</b>	<b>40105.741</b>	<b>4.39</b>	<b>1.83</b>	<b>9.56</b>

Note: Totals may not tally due to rounding off figures. \*: Provisional. \*\*: Revised

Reasons for shortfall are indicated in the note.

MINISTRY OF PETROLEUM & NATURAL GAS

Annexure-IV

Refinery-wise Capacity Utilisation during the month of May, 2017 and cumulatively for the period April-May, 2017 vis-à-vis April-May, 2016

(Para 3.4)

(Qty: '000' Tonnes)

Name of Undertaking/Unit	May, 2017			May, 2016			Cumulative (April - May)					
	Prorated Installed Capacity	Actual Crude T'put *	% Utilisation of Installed Capacity	Prorated Installed Capacity	Actual Crude T'put	% Utilisation of Installed Capacity	2017-18			2016-17		
							Prorated Installed Capacity	Actual Crude T'put *	% Utilisation of Installed Capacity	Prorated Installed Capacity	Actual Crude T'put **	% Utilisation of Installed Capacity
(1)	(2)	(3)	(4)	(5)	(6)	(7)	(8)	(9)	(10)	(11)	(12)	(13)
<b>A. Public Sector</b>	<b>11805.00</b>	<b>12453.04</b>	<b>105.49</b>	<b>11440.00</b>	<b>11570.98</b>	<b>101.14</b>	<b>23229.00</b>	<b>23606.80</b>	<b>101.63</b>	<b>22511.00</b>	<b>22707.57</b>	<b>100.87</b>
1. IOC, Guwahati	85.00	86.46	101.71	85.00	72.84	85.69	167.00	174.05	104.22	167.00	148.26	88.78
2. IOC, Barauni	510.00	533.30	104.57	508.00	576.67	113.52	1003.00	1091.58	108.83	1000.00	1135.93	113.59
3. IOC, Gujarat	1164.00	1168.87	100.42	1160.00	1240.31	106.92	2290.00	2294.08	100.18	2283.00	2455.27	107.55
4. IOC, Haldia	637.00	707.32	111.04	635.00	713.19	112.31	1253.00	1365.95	109.01	1250.00	1405.52	112.44
5. IOC, Mathura	679.00	825.28	121.54	678.00	813.75	120.02	1337.00	1621.36	121.27	1333.00	1611.23	120.87
6. IOC, Digboi	55.00	54.47	99.04	55.00	45.87	83.39	109.00	107.61	98.72	108.00	97.62	90.39
7. IOC, Panipat	1274.00	1402.07	110.05	1270.00	1386.00	109.13	2507.00	2728.38	108.83	2500.00	2702.01	108.08
8. IOC, Bongaigaon	200.00	174.31	87.15	199.00	214.65	107.86	393.00	374.90	95.39	392.00	426.23	108.73
9. IOC, Paradip	1274.00	1307.01	102.59	1270.00	538.27	0.00	2507.00	2033.50	81.11	2500.00	932.54	0.00
<b>Total IOC</b>	<b>5877.00</b>	<b>6259.08</b>	<b>106.50</b>	<b>5861.00</b>	<b>5601.54</b>	<b>95.57</b>	<b>11565.00</b>	<b>11791.40</b>	<b>101.96</b>	<b>11533.00</b>	<b>10914.61</b>	<b>94.64</b>
10. BPCL, Mumbai	1019.00	1017.87	99.89	1016.00	1169.35	115.09	2005.00	1974.35	98.47	2000.00	2314.87	115.74
11. BPCL, Kochi	1053.00	1105.94	105.03	805.00	932.51	115.84	2072.00	2120.35	102.33	1583.00	1827.82	115.47
<b>Total BPCL</b>	<b>2072.00</b>	<b>2123.81</b>	<b>102.50</b>	<b>1821.00</b>	<b>2101.85</b>	<b>115.42</b>	<b>4078.00</b>	<b>4094.70</b>	<b>100.41</b>	<b>3583.00</b>	<b>4142.69</b>	<b>115.62</b>
12. HPCL, Mumbai	637.00	719.81	113.00	551.00	723.55	131.32	1253.00	1426.65	113.86	1083.00	1437.45	132.73
13. HPCL, Visakh	707.00	834.27	118.00	703.00	815.05	115.94	1392.00	1577.57	113.33	1383.00	1618.83	117.05
<b>Total HPCL</b>	<b>1344.00</b>	<b>1554.08</b>	<b>115.63</b>	<b>1254.00</b>	<b>1538.59</b>	<b>122.69</b>	<b>2646.00</b>	<b>3004.22</b>	<b>113.54</b>	<b>2467.00</b>	<b>3056.28</b>	<b>123.89</b>
14. CPCL, Manali	892.00	862.55	96.70	889.00	802.21	90.24	1755.00	1547.32	88.17	1750.00	1622.26	92.70
15. CPCL, CBR	85.00	41.59	48.93	85.00	49.61	58.36	167.00	77.73	46.55	167.00	105.30	63.05
<b>Total CPCL</b>	<b>977.00</b>	<b>904.14</b>	<b>92.54</b>	<b>974.00</b>	<b>851.82</b>	<b>87.46</b>	<b>1922.00</b>	<b>1625.05</b>	<b>84.55</b>	<b>1917.00</b>	<b>1727.56</b>	<b>90.12</b>
16. NRL, Numaligarh	255.00	239.58	93.95	254.00	238.34	93.83	501.00	470.47	93.91	500.00	454.87	90.97
17. MRPL, Mangalore	1274.00	1365.16	107.16	1270.00	1232.45	97.04	2507.00	2607.91	104.03	2500.00	2398.36	95.93
18. ONGC, Tatipaka	6.00	7.20	120.01	6.00	6.40	106.67	11.00	13.06	118.77	11.00	13.21	120.05
<b>B. Joint Venture</b>	<b>1274.00</b>	<b>635.49</b>	<b>49.88</b>	<b>1270.00</b>	<b>1561.68</b>	<b>122.97</b>	<b>2507.00</b>	<b>2007.93</b>	<b>80.09</b>	<b>2500.00</b>	<b>3015.45</b>	<b>120.62</b>
19. BORL, Bina	510.00	635.49	124.61	508.00	616.51	121.36	1003.00	1186.29	118.27	1000.00	1150.09	115.01
20. HMEL, GGSR, Bhatinda	764.00	0.00	0.00	762.00	945.17	124.04	1504.00	821.64	54.63	1500.00	1865.36	124.36
<b>C. Private Sector</b>	<b>6795.00</b>	<b>7738.20</b>	<b>113.88</b>	<b>6776.00</b>	<b>6817.40</b>	<b>100.61</b>	<b>13370.00</b>	<b>15225.85</b>	<b>113.88</b>	<b>13333.00</b>	<b>14382.72</b>	<b>107.87</b>
21. RIL, Jamnagar	2803.00	2741.83	97.82	2795.00	2856.33	102.19	5515.00	5407.13	98.04	5500.00	5588.28	101.61
22. RIL, SEZ	2293.00	3221.32	140.48	2287.00	2182.51	95.43	4512.00	6356.16	140.87	4500.00	5297.03	117.71
<b>Total RIL</b>	<b>5096.00</b>	<b>5963.14</b>	<b>117.02</b>	<b>5082.00</b>	<b>5038.83</b>	<b>99.15</b>	<b>10027.00</b>	<b>11763.29</b>	<b>117.32</b>	<b>10000.00</b>	<b>10885.31</b>	<b>108.85</b>
23. EOL, Vadinar	1699.00	1775.05	104.48	1694.00	1778.56	104.99	3342.00	3462.57	103.61	3333.00	3497.41	104.93
<b>TOTAL(A+B+C)</b>	<b>19874.00</b>	<b>20826.73</b>	<b>104.79</b>	<b>19486.00</b>	<b>19950.07</b>	<b>102.38</b>	<b>39106.00</b>	<b>40840.58</b>	<b>104.44</b>	<b>38344.00</b>	<b>40105.74</b>	<b>104.59</b>

\*: Provisional. \*\*:Revised

**MINISTRY OF PETROLEUM & NATURAL GAS**

**Production of Petroleum Products during the month of May, 2017 and cumulatively for the period April-May, 2017 vis-à-vis April-May, 2016**

Annexure-V

(Para 3.4)

(Qty: '000' Tonnes)

Name of Undertaking/Unit	Planned production during the month*	Production during the			Cumulative Production			% variation over last year		% variation during the month under review over planned production
		Month under review *	Corresponding month of last year	Preceding month of current year **	(April-May)			During the month under review	Upto the end of the period	
					Planned production during current year*	Actual production during current year*	Actual production during corresponding period of last year**			
(1)	(2)	(3)	(4)	(5)	(6)	(7)	(8)	(9)	(10)	(11)
<b>I. Refinery</b>										
<b>A. Public Sector</b>	<b>10888.531</b>	<b>11769.165</b>	<b>10892.823</b>	<b>10385.748</b>	<b>21362.231</b>	<b>22154.914</b>	<b>21232.769</b>	<b>8.05</b>	<b>4.34</b>	<b>8.09</b>
1. IOC, Guwahati	79.897	103.049	94.753	100.149	156.598	203.198	196.382	8.76	3.47	28.98
2. IOC, Barauni	501.713	533.905	523.090	522.151	989.617	1056.056	1039.838	2.07	1.56	6.42
3. IOC, Gujarat	875.241	1169.486	1201.873	1127.783	1931.239	2297.269	2318.806	-2.69	-0.93	33.62
4. IOC, Haldia	648.824	650.893	638.849	605.481	1274.476	1256.374	1236.804	1.89	1.58	0.32
5. IOC, Mathura	775.447	813.163	770.218	763.282	1526.662	1576.445	1522.926	5.58	3.51	4.86
6. IOC, Digboi	44.352	55.057	43.284	54.683	84.672	109.740	95.250	27.20	15.21	24.14
7. IOC, Panipat	1364.233	1358.747	1422.266	1281.112	2683.326	2639.859	2769.798	-4.47	-4.69	-0.40
8. IOC, Bongaigaon	183.852	125.671	183.672	153.761	344.723	279.432	376.182	-31.58	-25.72	-31.65
9. IOC, Paradip	967.858	1142.817	433.204	688.827	1683.231	1831.644	778.263	-	-	18.08
<b>Total IOC</b>	<b>5441.418</b>	<b>5952.788</b>	<b>5311.209</b>	<b>5297.229</b>	<b>10674.544</b>	<b>11250.017</b>	<b>10334.249</b>	<b>12.08</b>	<b>8.86</b>	<b>9.40</b>
10. BPCL, Mumbai	956.063	1011.246	1137.418	853.058	1816.995	1864.304	2217.134	-11.09	-15.91	5.77
11. BPCL, Kochi	992.941	1069.418	908.590	972.096	1979.019	2041.514	1716.432	17.70	18.94	7.70
<b>Total BPCL</b>	<b>1949.004</b>	<b>2080.664</b>	<b>2046.008</b>	<b>1825.154</b>	<b>3796.014</b>	<b>3905.818</b>	<b>3933.566</b>	<b>1.69</b>	<b>-0.71</b>	<b>6.76</b>
12. HPCL, Mumbai	630.745	654.782	680.845	645.591	1239.840	1300.373	1318.596	-3.83	-1.38	3.81
13. HPCL, Visakh	747.614	802.775	725.746	670.667	1385.010	1473.442	1467.064	10.61	0.43	7.38
<b>Total HPCL</b>	<b>1378.359</b>	<b>1457.557</b>	<b>1406.591</b>	<b>1316.258</b>	<b>2624.850</b>	<b>2773.815</b>	<b>2785.660</b>	<b>3.62</b>	<b>-0.43</b>	<b>5.75</b>
14. CPCL, Manali	722.454	805.884	743.219	562.589	1468.309	1368.473	1467.285	8.43	-6.73	11.55
15. CPCL, CBR	42.672	41.979	49.661	36.518	83.967	78.497	105.479	-15.47	-25.58	-1.62
<b>Total CPCL</b>	<b>765.126</b>	<b>847.863</b>	<b>792.880</b>	<b>599.107</b>	<b>1552.276</b>	<b>1446.970</b>	<b>1572.764</b>	<b>6.93</b>	<b>-8.00</b>	<b>10.81</b>
16. NRL, Numaligarh	223.743	260.145	239.264	228.027	440.345	488.172	449.136	8.73	8.69	16.27
17. MRPL, Mangalore	1125.611	1163.145	1090.585	1114.300	2263.833	2277.445	2144.426	6.65	6.20	3.33
18. ONGC, Tatipaka	5.270	7.003	6.286	5.673	10.370	12.677	12.967	11.41	-2.24	32.89
<b>B. Joint Venture</b>	<b>474.450</b>	<b>588.900</b>	<b>1483.669</b>	<b>1258.222</b>	<b>1623.500</b>	<b>1847.122</b>	<b>2809.992</b>	<b>-60.31</b>	<b>-34.27</b>	<b>24.12</b>
19. BORL, Bina	474.450	593.233	575.053	500.533	948.900	1093.766	1027.013	3.16	6.50	25.04
20. HMEL, GGSR, Bhatinda^	0.000	-4.333	908.616	757.689	674.600	753.356	1782.979	-100.48	-57.75	-
<b>C. Private Sector</b>	<b>7283.211</b>	<b>8541.496</b>	<b>7419.040</b>	<b>7655.128</b>	<b>14914.322</b>	<b>16196.624</b>	<b>15047.897</b>	<b>15.13</b>	<b>7.63</b>	<b>17.28</b>
21. RIL, Jamnagar	2871.388	2899.255	2871.388	2529.537	5457.449	5428.792	5457.450	0.97	-0.53	0.97
22. RIL, SEZ	2798.333	3956.203	2798.333	3481.285	6229.891	7437.488	6229.891	41.38	19.38	41.38
<b>Total RIL</b>	<b>5669.721</b>	<b>6855.458</b>	<b>5669.721</b>	<b>6010.822</b>	<b>11687.340</b>	<b>12866.280</b>	<b>11687.341</b>	<b>20.91</b>	<b>10.09</b>	<b>20.91</b>
23. EOL, Vadinar	1613.491	1686.038	1749.319	1644.306	3226.982	3330.344	3360.556	-3.62	-0.90	4.50
<b>TOTAL(A+B+C)</b>	<b>18646.193</b>	<b>20899.561</b>	<b>19795.531</b>	<b>19299.098</b>	<b>37900.052</b>	<b>40198.660</b>	<b>39090.658</b>	<b>5.58</b>	<b>2.83</b>	<b>12.08</b>
<b>II. Fractionators</b>										
ONGC	285.001	237.451	263.082	252.904	556.747	490.355	483.910	-9.74	1.33	-16.68
OIL	1.500	0.960	3.075	2.790	4.400	3.750	6.424	-68.78	-41.63	-36.00
GAIL	82.848	99.590	88.725	84.088	163.023	183.678	173.581	12.25	5.82	20.21
<b>D. Total Fractionators</b>	<b>369.349</b>	<b>338.001</b>	<b>354.882</b>	<b>339.782</b>	<b>724.170</b>	<b>677.783</b>	<b>663.915</b>	<b>-4.76</b>	<b>2.09</b>	<b>-8.49</b>
<b>Grand Total (A+B+C+D)</b>	<b>19015.541</b>	<b>21237.562</b>	<b>20150.413</b>	<b>19638.880</b>	<b>38624.222</b>	<b>40876.442</b>	<b>39754.573</b>	<b>5.40</b>	<b>2.82</b>	<b>11.69</b>

Note: Totals may not tally due to rounding off figures. \*: Provisional. \*\*: Revised

^: The negative production indicates that the products were consumed in meeting the fuel and other requirements for the ongoing turnaround.