

Government of India
Ministry of Petroleum and Natural Gas
Economic & Statistics Division

New Delhi
Dated the April, 2018

Monthly Production Report
March, 2018

Crude Oil

1. **Crude oil production¹** during March, 2018 was 3041.65 TMT which is 5.9% lower than target and 1.58% lower when compared with March 2017. Cumulative crude oil production during April-March, 2017-18 was 35684.34 TMT which is 4.68% lower than target for the period and 0.9% lower than production during corresponding period of last year. Unit-wise and State-wise crude oil production is given at **Annexure-I**. Unit-wise crude oil production for the month of March, 2018 and cumulatively for the period April-March, 2017-18 vis-à-vis same period of last year has been shown in Table-1 and month-wise in Figure-1.

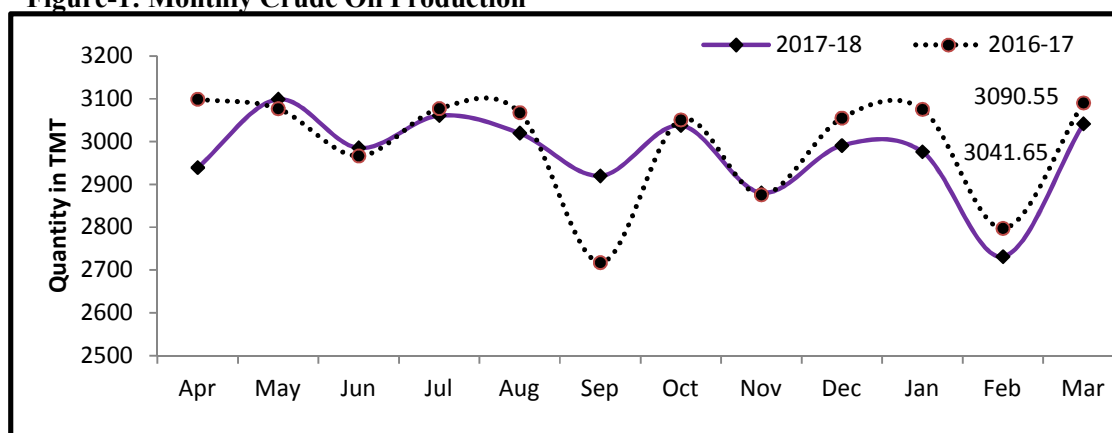
Table-1: Crude Oil Production (in TMT)

Oil Company	Target	March (Month)				April-March (Cumulative)			
	2017-18 (Apr-Mar)	2017-18		2016-17	% over last year	2017-18		2016-17	% over last year
		Target	Prod.*	Prod.		Target	Prod.*	Prod.	
ONGC	23071.09	2011.91	1879.17	1931.45	97.29	23071.09	22249.12	22218.37	100.14
OIL	3734.00	317.46	281.53	293.20	96.02	3734.00	3376.28	3258.03	103.63
PSC Fields	10630.58	902.86	880.96	865.91	101.74	10630.58	10058.94	10532.43	95.50
Total	37435.67	3232.23	3041.65	3090.55	98.42	37435.67	35684.34	36008.83	99.10

Note: Totals may not tally due to rounding off.

*: Provisional

Figure-1: Monthly Crude Oil Production



¹Including condensate

Unit-wise production details with reasons for shortfall are as under:

1.1 Crude oil production by **ONGC** during March, 2018 was 1879.17 TMT which is 6.6% lower than the monthly target and 2.71% lower when compared with March, 2017. Cumulative crude oil production by ONGC during April-March, 2017-18 was 22249.12 TMT which is 3.56% lower than target for the period but marginally higher by 0.14% than production during corresponding period of last year. Reasons for shortfall in production with respect to target are as under:

- Additional production planned from WO16 cluster from October'17 onwards could not be realized due to delay in implementation of "Conversion of Sagar Samrat to MOPU" Project.
- Production planned from project 'Integrated Development of B-127 Cluster' from Oct.'17 onwards could not be realized due to delay in implementation of project. Production targeted by pre-monsoon of 2018 from B-127 wells.
- NBP field of Western offshore which was affected due to ESP related issues was normalized by 15.02.2018 through rig intervention.
- Increase in water cut in wells of Heera, Neelam and B-173 fields.
- Frequent power shutdowns and low gas injection pressure in Mehsana and Assam hampered artificial lift operations.
- Increase in water cut in Mehsana and Assam.

1.2 Crude oil production by **OIL** during March, 2018 was 281.53 TMT which is 11.32% lower than monthly target and 3.98% lower when compared with March, 2017. Cumulative crude oil production by OIL during April-March, 2017-18 was 3376.28 TMT which is 9.58% lower than target for the period but 3.63% higher than production during the corresponding period of last year. Reasons for shortfall in production are as under:

- Less than planned contribution from old wells – Rise in water cut in wells and decline in total liquid production of wells of Greater Hapjan and Greater Chandmari Fields.
- Less than planned contribution from work over wells.

1.3 Crude oil production by **Pvt/JVs** during March, 2018 was 880.96 TMT which is 2.43% lower than the monthly target but 1.74% higher than March, 2017. Cumulative crude oil production by Pvt/JVs during April-March, 2017-18 was 10058.94 TMT which is 5.38% lower than target for the period and 4.5% lower than the production during the corresponding period of last year. Reasons for shortfall in production are as under:

- RJ-ON-90/1 (CIL): Around 85 oil wells closed due to various reasons like high water cut, requiring WOJ, etc; Underperformance of Bhagyam.
- CY-ONN-2002/2 (ONGC): Full fledged production yet to be realized owing to non-grant of PML.

Natural Gas

2. **Natural gas production** during March, 2018 was 2782.61 MMSCM which is 11.12% lower than the target for the month but 1.18% higher when compared with March, 2017. Cumulative natural gas production during April-March, 2017-18 was 32649.30 MMSCM which is 7.07% lower than target for the period but 2.36% higher than the production during corresponding period of last year. Unit-wise and state-wise natural gas production is given at **Annexure-II**. Unit-wise natural gas production for the month of March, 2018 and cumulatively for the period April-March, 2017-18 vis-à-vis same period of last year has been shown in Table-2 and month-wise in Figure-2.

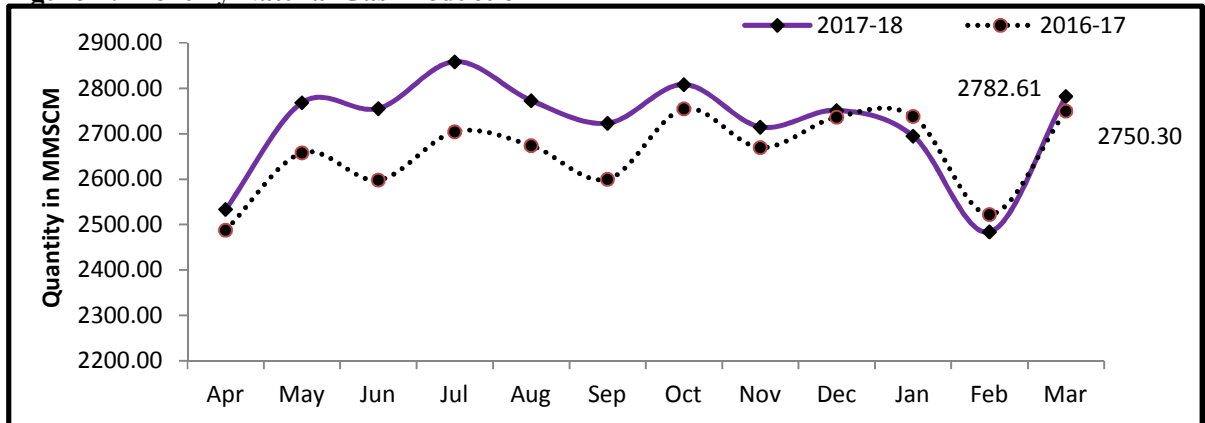
Table-2: Natural Gas Production (MMSCM)

Oil Company	Target	March (Month)				April-March (Cumulative)			
	2017-18 (Apr-Mar)	2017-18		2016-17	% over last year	2017-18		2016-17	% over last year
		Target	Prod.*	Prod.		Target	Prod.*	Prod.	
ONGC	24208.40	2205.50	2013.61	1972.34	102.09	24208.40	23429.47	22088.00	106.07
OIL	3000.20	248.01	236.73	251.02	94.31	3000.20	2881.50	2936.56	98.13
PSC Fields	7925.50	677.25	532.28	526.93	101.01	7925.50	6338.34	6872.15	92.23
Total	35134.09	3130.76	2782.61	2750.30	101.18	35134.09	32649.30	31896.71	102.36

Note: Totals may not tally due to rounding off.

*: Provisional

Figure-2: Monthly Natural Gas Production



- 2.1 Natural gas production by **ONGC** during March, 2018 was 2013.61 MMSCM which is 8.7% lower than the monthly target but 2.09% higher when compared with March, 2017. Cumulative natural gas production by ONGC during April-March, 2017-18 was 23429.47 MMSCM which is 3.22% lower than the cumulative target but 6.07% higher than the production during the corresponding period of the last year. Reasons for shortfall in production during month are as under:

- Less gas production from WO16 cluster and no production from B127 Cluster due to delay in implementation of 'Conversion of Sagar Samrat to MOPU' and 'Integrated Development of B-127 Cluster' project respectively.
 - Delay in commencement of production planned from sub-sea wells in Eastern Offshore.
- 2.2 Natural gas production by **OIL** during March, 2018 was 236.73 MMSCM which is 4.55% lower than the monthly target and 5.69% lower than March, 2017. Cumulative natural gas production by OIL during April-March, 2017-18 was 2881.50 MMSCM which is 3.96% lower than the cumulative target and 1.87% lower than the production during the corresponding period of last year. Reasons for shortfall in production are as under:
- Outage of three high producing gas wells of Deohal and Naholia area due to down hole problems.
 - Frequent loading problem of BCPL's Madhuban Compressor.
- 2.3 Natural gas production by **Pvt/JVs** during March, 2018 was 532.28 MMSCM which is 21.41% lower than the monthly target but 1.01% higher when compared with March, 2017. Cumulative natural gas production by Pvt/JVs during April-March, 2017-18 was 6338.34 MMSCM which is 20.03% lower than the cumulative target and 7.77% lower than the production during the corresponding period of last year. Reasons for shortfall in production are as under:
- KG- OSN-2001/3 (GSPC): Underperformance of wells.
 - KG-DWN-98/3 (RIL): Well A20 stopped flowing from 18.02.2018 to 10.03.2018 due to low reservoir pressure.
 - Raniganj East (Essar): Few wells closed for planned maintenance and refrac jobs. Major customer 'Matix' under operational shutdown.

3. Refinery Production (in terms of crude oil processed)

Refinery production during March, 2018 was 21120.72 TMT which is 4.21% lower than the target for the month and 0.9% lower when compared with March, 2017. Cumulative production during April-March, 2017-18 was 251934.82 TMT which is 2.41% higher than the target for the period and 2.68% higher than the production during corresponding period of last year. Unit-wise production is given at **Annexure-III**. Company-wise production for the month of March, 2018 and cumulatively for the period April-March, 2017-18 vis-à-vis same period of last year has been shown in Table-3 and month-wise in Figure-3.

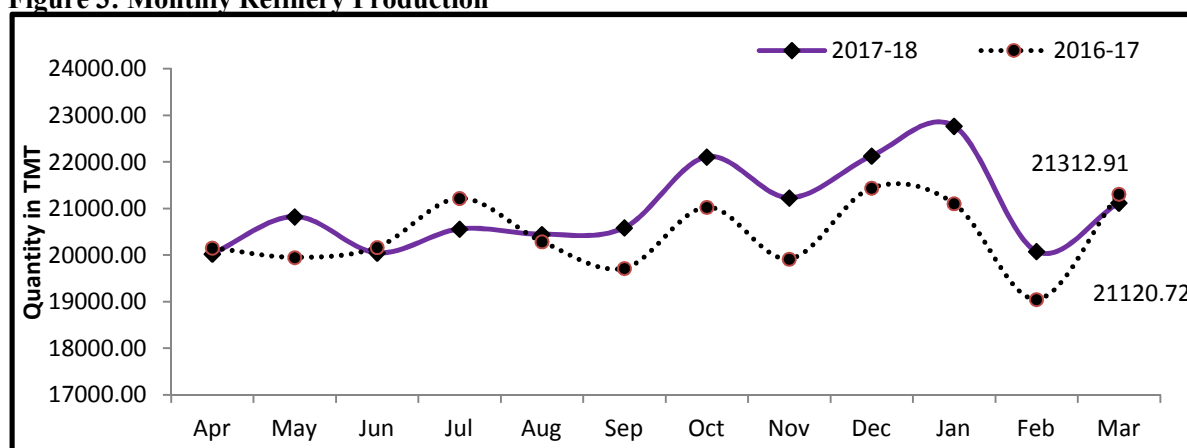
Table 3: Refinery Production (TMT)

Oil Company	Target	March (Month)				April-March (Cumulative)			
	2017-18 (Apr-Mar)	2017-18		2016-17	% over last year	2017-18		2016-17	% over last year
		Target	Prod.*	Prod.		Target	Prod.*	Prod.	
CPSE	140322	12837.52	12526.86	12139.82	103.19	140321.54	145233.80	137387.84	105.71
IOCL	66290	6217.68	5596.81	6280.05	89.12	66290.00	69001.18	65190.52	105.85
BPCL	27000	2525.00	2664.19	1803.21	147.75	27000.00	28148.65	25361.57	110.99
HPCL	18000	1495.27	1590.60	1621.33	98.10	18000.04	18276.18	17845.56	102.41
CPCL	10300	942.47	981.97	752.60	130.48	10300.00	10789.01	10256.13	105.20
NRL	2670	226.69	217.34	229.51	94.70	2670.00	2809.43	2683.12	104.71
MRPL	16000	1425.00	1469.45	1445.66	101.65	16000.00	16129.77	15965.30	101.03
ONGC	62	5.41	6.50	7.45	87.22	61.50	79.58	85.64	92.92
JVs	15201	1468.00	1534.05	1347.74	113.82	15201.00	15538.10	16881.52	92.04
BORL	6000	525.00	569.16	618.67	92.00	6000.00	6707.90	6360.06	105.47
HMEL	9201	943.00	964.88	729.08	132.34	9201.00	8830.20	10521.46	83.93
Private	90480	7742.39	7059.82	7825.35	90.22	90479.95	91162.93	91092.76	100.08
RIL	70174	6064.54	5274.52	6064.54	86.97	70173.87	70470.05	70173.87	100.42
EOL	20306	1677.85	1785.29	1760.81	101.39	20306.08	20692.88	20918.89	98.92
TOTAL	246002	22047.91	21120.72	21312.91	99.10	246002.49	251934.82	245362.12	102.68

Note: Totals may not tally due to rounding off.

*: Provisional

Figure 3: Monthly Refinery Production



3.1 **CPSE Refineries' production** during March, 2018 was 12526.86 TMT which is 2.42% lower than the target for the month but 3.19% higher when compared with March, 2017. Cumulative production by CPSE refineries during April-March, 2017-18 was 145233.80 TMT which is 3.5% higher than the target for the period and 5.71% higher than the production during corresponding period of last year. Reasons for shortfall of refinery production in some CPSE refineries are as under:

- ❖ IOCL, Paradip: Throughput lower due to refinery M&I shutdown in Mar' 18, originally planned in Jul-Aug'17.

❖ NRL, Numaligarh: Shutdown taken in the crude processing unit to install new exchangers, replacement of HGO product cum CR pump, etc.

- 3.2 **Production in JV refineries** during March, 2018 was 1534.05 TMT which is 4.5% higher than the target for the month and 13.82% higher when compared with March, 2017. Cumulative production by JVs refineries during April-March, 2017-18 was 15538.10 TMT which is 2.22% higher than the target for the period but 7.96% lower than the production during corresponding period of last year.
- 3.3 **Production in private refineries** during March, 2018 was 7059.82 TMT which is lower by 8.82% than the target for the month and 9.78% lower when compared with March, 2017. Cumulative production by private refineries during April-March, 2017-18 was 91162.93 TMT which is 0.75% higher than the target for the period and marginally higher by 0.08% than the production during corresponding period of last year.
- 3.4 Refinery-wise details of the capacity utilization and production of petroleum products during the month of March, 2018 and cumulatively for the period April-March, 2017-18 vis-à-vis April-March, 2016-17 are given at **Annexures - IV and V** respectively.

MINISTRY OF PETROLEUM & NATURAL GAS

Annexure-I

Crude Oil Production during the month of March, 2018 and cumulatively for the period April-March, 2017-18 vis-à-vis April-March, 2016-17

(Para 1)

(Qty: '000' Tonnes)

Name of Undertaking/Unit/State	Planned production during the month	Production during the			Cumulative Production			% variation over last year		% variation during the month under review over planned production
		Month under review *	Corresponding month of last year **	Preceding month of current year **	(April-March)			During the month under review	Upto the end of the period	
					Planned production during current year	Actual production during current year *	Actual production during corresponding period of last year **			
(1)	(2)	(3)	(4)	(5)	(6)	(7)	(8)	(9)	(10)	(11)
1. ONGC	2011.906	1879.167	1931.451	1684.466	23071.094	22249.121	22218.371	-2.71	0.14	-6.60
Onshore	520.061	516.730	518.281	461.543	6075.060	6009.593	5934.266	-0.30	1.27	-0.64
Andhra Pradesh	26.043	26.735	27.879	22.266	315.725	321.545	276.007	-4.10	16.50	2.66
Assam ^	87.466	82.699	81.783	75.341	1012.510	974.567	952.941	1.12	2.27	-5.45
Gujarat	385.772	384.356	386.004	343.616	4498.625	4451.623	4467.735	-0.43	-0.36	-0.37
Tamil Nadu	20.780	22.940	22.615	20.320	248.200	261.858	237.583	1.44	10.22	10.40
Offshore	1491.846	1362.437	1413.170	1222.923	16996.034	16239.528	16284.105	-3.59	-0.27	-8.67
Eastern Offshore	5.706	0.779	0.941	0.613	74.000	8.344	15.681	-17.22	-46.79	-86.35
Western Offshore	1344.147	1221.321	1289.870	1106.185	15308.024	14777.089	14905.126	-5.31	-0.86	-9.14
Condensates	141.993	140.337	122.359	116.125	1614.010	1454.095	1363.298	14.69	6.66	-1.17
2. OIL (Onshore)	317.457	281.525	293.197	260.488	3734.000	3376.277	3258.029	-3.98	3.63	-11.32
Assam	316.925	280.832	292.549	259.849	3727.387	3367.336	3250.362	-4.01	3.60	-11.39
Arunachal Pradesh	0.532	0.586	0.648	0.534	6.613	7.359	7.667	-9.57	-4.02	10.15
Rajasthan (Heavy Oil)	-	0.107	0.000	0.105	-	1.582	0.000	-	-	-
3. DGH (Private / JVC)	902.863	880.955	865.905	786.526	10630.578	10058.937	10532.428	1.74	-4.50	-2.43
Onshore	749.456	712.776	699.679	639.173	8824.298	8153.851	8395.697	1.87	-2.88	-4.89
Arunachal Pradesh	4.419	3.303	3.919	3.031	52.035	42.914	47.590	-15.72	-9.83	-25.26
Assam	0.856	0.895	0.000	0.534	10.076	3.093	0.000	-	-	4.58
Gujarat	16.796	12.693	11.347	10.940	197.758	139.355	137.200	11.86	1.57	-24.43
Rajasthan	716.706	689.367	678.279	618.357	8438.694	7885.344	8164.576	1.63	-3.42	-3.81
Tamil Nadu	10.679	6.518	6.134	6.311	125.735	83.145	46.331	6.26	79.46	-38.96
Offshore	153.406	168.179	166.226	147.353	1806.280	1905.086	2136.731	1.17	-10.84	9.63
Eastern Offshore	67.519	63.966	77.623	58.667	795.025	818.765	962.627	-17.59	-14.94	-5.26
Gujarat Offshore	25.709	46.195	31.423	36.365	302.703	399.123	381.603	47.01	4.59	79.68
Western Offshore	60.178	58.018	57.180	52.321	708.552	687.198	792.501	1.47	-13.29	-3.59
GRAND TOTAL (1+2+3)	3232.226	3041.647	3090.553	2731.480	37435.672	35684.335	36008.828	-1.58	-0.90	-5.90
Onshore	1586.974	1511.031	1511.157	1361.204	18633.358	4543.706	17587.992	-0.01	-74.17	-4.79
Offshore	1645.252	1530.616	1579.396	1370.276	18802.314	4614.199	18420.836	-3.09	-74.95	-6.97

Note: Totals may not tally due to rounding off figures.

^: Includes crude oil production of Tripura

*: Provisional. **: Revised

Reasons for shortfall are indicated in the note.

MINISTRY OF PETROLEUM & NATURAL GAS

Annexure-II

Natural Gas Production during the month of March, 2018 and cumulatively for the period April-March, 2017-18 vis-à-vis April-March, 2016-17

(Para 2)

(Qty: Million Cubic Meters)

Name of Undertaking/Unit/State	Planned production during the month	Production during the			Cumulative Production (April-March)			% variation over last year		% variation during the month under review over planned production
		Month under review *	Corresponding month of last year **	Preceding month of current year **	Planned production during current year	Actual production during current year *	Actual production during corresponding period of last year **	During the month under review	Upto the end of the period	
(1)	(2)	(3)	(4)	(5)	(6)	(7)	(8)	(9)	(10)	(11)
1. ONGC	2205.505	2013.605	1972.339	1800.024	24208.396	23429.465	22088.003	2.09	6.07	-8.70
Onshore	446.682	490.437	486.510	437.287	5384.475	5638.301	5205.153	0.81	8.32	9.80
Andhra Pradesh	82.742	102.647	80.849	82.696	959.000	959.162	867.775	26.96	10.53	24.06
Assam	37.805	42.839	42.147	38.876	440.800	507.974	435.208	1.64	16.72	13.32
Gujarat	112.265	115.651	141.992	108.988	1374.767	1531.571	1490.119	-18.55	2.78	3.02
Rajasthan	0.425	0.714	0.436	0.697	5.000	5.556	4.725	63.76	17.59	68.20
Tamil Nadu	88.873	103.852	87.734	92.541	1118.907	1193.667	977.416	18.37	22.12	16.85
Tripura	124.573	124.734	133.352	113.489	1486.000	1440.371	1429.910	-6.46	0.73	0.13
Offshore	1758.822	1523.168	1485.829	1362.737	18823.922	17791.164	16882.850	2.51	5.38	-13.40
Eastern Offshore	179.608	43.697	55.772	36.597	1131.995	548.224	469.998	-21.65	16.64	-75.67
Western Offshore	1579.214	1479.471	1430.057	1326.140	17691.927	17242.940	16412.852	3.46	5.06	-6.32
2. OIL	248.008	236.729	251.024	209.326	3000.196	2881.497	2936.556	-5.69	-1.87	-4.55
Assam	228.923	217.299	231.908	192.599	2747.321	2658.525	2692.672	-6.30	-1.27	-5.08
Arunachal Pradesh	1.085	0.977	1.007	0.878	12.775	11.567	11.865	-2.98	-2.51	-9.95
Rajasthan	18.000	18.453	18.109	15.849	240.100	211.405	232.019	1.90	-8.88	2.52
3. DGH (Private / JVC)	677.247	532.280	526.934	474.753	7925.501	6338.342	6872.146	1.01	-7.77	-21.41
Onshore	122.551	134.249	95.305	120.374	1457.627	1384.083	1152.175	40.86	20.13	9.55
Arunachal Pradesh	19.364	2.008	1.445	1.964	228.000	17.946	15.678	38.96	14.47	-89.63
Assam	0.749	12.796	0.000	8.057	8.654	52.525	0.000	-	-	1608.41
Gujarat	3.924	5.585	7.683	5.317	61.056	75.090	90.148	-27.31	-16.70	42.34
Rajasthan	97.149	112.663	85.322	103.934	1143.850	1224.972	1040.597	32.04	17.72	15.97
Tamil Nadu	1.365	1.197	0.855	1.102	16.068	13.550	5.752	40.00	135.57	-12.28
CBM	116.947	70.420	44.852	62.584	1333.459	734.803	564.591	57.01	30.15	-39.78
Jharkhand (CBM)	0.305	0.224	0.297	0.216	3.590	3.964	3.084	-24.58	28.53	-26.56
Madhya Pradesh (CBM)	39.918	32.462	1.030	26.073	470.000	199.771	6.441	3051.65	3001.55	-18.68
West Bengal (CBM)	76.724	37.734	43.525	36.295	859.869	531.068	555.066	-13.30	-4.32	-50.82
Offshore	437.749	327.611	386.777	291.795	5134.415	4219.456	5155.380	-15.30	-18.15	-25.16
Eastern Offshore	278.275	157.876	248.322	145.331	3276.464	2268.516	3200.447	-36.42	-29.12	-43.27
Gujarat Offshore	5.560	7.566	5.871	5.716	45.741	97.690	80.693	28.87	21.06	36.07
Western Offshore	153.914	162.169	132.584	140.748	1812.210	1853.250	1874.240	22.31	-1.12	5.36
TOTAL (1+2+3)	3130.759	2782.614	2750.297	2484.103	35134.093	32649.304	31896.705	1.18	2.36	-11.12
CBM	116.947	70.420	44.852	62.584	1333.459	734.803	564.591	57.01	30.15	-39.78
Onshore	817.241	861.415	832.839	766.987	9842.298	9903.881	9293.884	3.43	6.56	5.41
Offshore	2196.572	1850.779	1872.606	1654.532	23958.337	22010.620	22038.230	-1.17	-0.13	-15.74

Note: Totals may not tally due to rounding off figures.

*: Provisional.

** : Revised

CBM: Coal Bed Methane production.

Reasons for shortfall are indicated in the note.

MINISTRY OF PETROLEUM & NATURAL GAS

Annexure-III

Refinery Production (in terms of crude oil processed) during the month of March, 2018 and cumulatively for the period April-March, 2017-18 vis-à-vis April-March, 2016-17

(Para 3)

(Qty: '000' Tonnes)

Name of Undertaking/Unit	Planned production during the month	Production during the			Cumulative Production			% variation over last year		% variation during the month under review over planned production
		Month under review *	Corresponding month of last year	Preceding month of current year **	(April-March)			During the month under	Upto the end of the period	
					Planned production during current year	Actual production during current year *	Actual production during corresponding period of last year **			
(1)	(2)	(3)	(4)	(5)	(6)	(7)	(8)	(9)	(10)	(11)
A. Public Sector	12837.520	12526.856	12139.815	11486.585	140321.537	145233.796	137387.837	3.19	5.71	-2.42
1. IOC, Guwahati	72.192	89.473	78.659	74.909	850.000	1023.684	863.583	13.75	18.54	23.94
2. IOC, Barauni	554.697	600.769	557.719	451.725	5750.000	5818.634	6526.045	7.72	-10.84	8.31
3. IOC, Gujarat	1239.002	1255.567	1234.716	1160.662	12820.000	13811.321	13994.368	1.69	-1.31	1.34
4. IOC, Haldia	665.000	697.333	715.974	651.299	7400.000	7655.491	7689.297	-2.60	-0.44	4.86
5. IOC, Mathura	805.001	868.112	829.847	741.616	8470.000	9240.208	9229.999	4.61	0.11	7.84
6. IOC, Digboi	43.000	62.573	53.406	48.142	500.000	665.623	533.448	17.16	24.78	45.52
7. IOC, Panipat	1348.548	1417.850	1394.396	1250.348	15200.000	15654.196	15638.002	1.68	0.10	5.14
8. IOC, Bongaigaon	203.094	218.561	210.426	210.275	2300.000	2401.586	2485.791	3.87	-3.39	7.62
9. IOC, Paradip	1287.145	386.573	1204.907	757.513	13000.000	12730.438	8229.991	-67.92	54.68	-69.97
Total IOC	6217.678	5596.811	6280.050	5346.489	66290.000	69001.181	65190.524	-10.88	5.85	-9.99
10. BPCL, Mumbai	1250.000	1267.966	685.501	1196.515	13310.000	14054.056	13541.109	84.97	3.79	1.44
11. BPCL, Kochi	1275.000	1396.223	1117.711	1169.064	13690.000	14094.598	11820.457	24.92	19.24	9.51
Total BPCL	2525.000	2664.189	1803.212	2365.579	27000.000	28148.654	25361.566	47.75	10.99	5.51
12. HPCL, Mumbai	662.767	740.204	760.026	685.746	8449.999	8641.170	8510.319	-2.61	1.54	11.68
13. HPCL, Visakh	832.505	850.395	861.304	782.409	9550.038	9635.010	9335.237	-1.27	3.21	2.15
Total HPCL	1495.272	1590.599	1621.330	1468.155	18000.037	18276.180	17845.556	-1.90	2.41	6.38
14. CPCL, Manali	900.000	932.910	701.619	825.691	9800.000	10288.831	9725.333	32.97	5.79	3.66
15. CPCL, CBR	42.466	49.063	50.984	34.975	500.000	500.177	530.793	-3.77	-5.77	15.54
Total CPCL	942.466	981.973	752.603	860.666	10300.000	10789.008	10256.126	30.48	5.20	4.19
16. NRL, Numaligarh	226.692	217.337	229.507	206.252	2670.000	2809.426	2683.125	-5.30	4.71	-4.13
17. MRPL, Mangalore	1425.000	1469.449	1445.663	1233.224	16000.000	16129.765	15965.296	1.65	1.03	3.12
18. ONGC, Tatipaka	5.412	6.498	7.450	6.220	61.500	79.582	85.644	-12.78	-7.08	20.07
B. Joint Venture	1468.000	1534.045	1347.743	1446.241	15201.000	15538.099	16881.517	13.82	-7.96	4.50
19. BORL, Bina	525.000	569.161	618.666	500.727	6000.000	6707.904	6360.060	-8.00	5.47	8.41
20. HMEL, GGSR, Bhatinda	943.000	964.884	729.077	945.514	9201.000	8830.195	10521.457	32.34	-16.07	2.32
C. Private Sector	7742.391	7059.817	7825.352	7147.632	90479.951	91162.926	91092.765	-9.78	0.08	-8.82
21. RIL, Jamnagar	2784.786	2847.817	2784.786	2653.917	32823.151	33152.751	32823.151	2.26	1.00	2.26
22. RIL, SEZ	3279.758	2426.706	3279.758	2899.407	37350.720	37317.295	37350.720	-26.01	-0.09	-26.01
Total RIL	6064.544	5274.523	6064.544	5553.324	70173.871	70470.046	70173.871	-13.03	0.42	-13.03
23. EOL, Vadinar	1677.847	1785.294	1760.808	1594.308	20306.080	20692.880	20918.894	1.39	-1.08	6.40
TOTAL(A+B+C)	22047.911	21120.718	21312.910	20080.458	246002.488	251934.821	245362.119	-0.90	2.68	-4.21

Note: 1. Totals may not tally due to rounding off figures.

*: Provisional. **: Revised

2. Target for the year 2017-18 (Month-wise) reconciled.

MINISTRY OF PETROLEUM & NATURAL GAS

Annexure-IV

Refinery-wise Capacity Utilisation during the month of March, 2018 and cumulatively for the period April-March, 2017-18 vis-à-vis April-March, 2016-17

(Para 3.4)

(Qty: '000' Tonnes)

Name of Undertaking/Unit	March, 2018			March, 2017			Cumulative (April - March)					
	Prorated Installed Capacity	Actual Crude T'put *	% Utilisation of Installed Capacity	Prorated Installed Capacity	Actual Crude T'put	% Utilisation of Installed Capacity	2017-18			2016-17		
							Prorated Installed Capacity	Actual Crude T'put *	% Utilisation of Installed Capacity	Prorated Installed Capacity	Actual Crude T'put **	% Utilisation of Installed Capacity
(1)	(2)	(3)	(4)	(5)	(6)	(7)	(8)	(9)	(10)	(11)	(12)	(13)
A. Public Sector	12066.00	12526.86	103.82	11471.00	12139.82	105.83	142066.00	145233.80	102.23	135066.00	137387.84	101.72
1. IOC, Guwahati	85.00	89.47	105.26	85.00	78.66	92.54	1000.00	1023.68	102.37	1000.00	863.58	86.36
2. IOC, Barauni	510.00	600.77	117.80	510.00	557.72	109.36	6000.00	5818.63	96.98	6000.00	6526.05	108.77
3. IOC, Gujarat	1164.00	1255.57	107.87	1164.00	1234.72	106.08	13700.00	13811.32	100.81	13700.00	13994.37	102.15
4. IOC, Haldia	637.00	697.33	109.47	637.00	715.97	112.40	7500.00	7655.49	102.07	7500.00	7689.30	102.52
5. IOC, Mathura	679.00	868.11	127.85	679.00	829.85	122.22	8000.00	9240.21	115.50	8000.00	9230.00	115.37
6. IOC, Digboi	55.00	62.57	113.77	55.00	53.41	97.10	650.00	665.62	102.40	650.00	533.45	82.07
7. IOC, Panipat	1274.00	1417.85	111.29	1274.00	1394.40	109.45	15000.00	15654.20	104.36	15000.00	15638.00	104.25
8. IOC, Bongaigaon	200.00	218.56	109.28	200.00	210.43	105.21	2350.00	2401.59	102.20	2350.00	2485.79	105.78
9. IOC, Paradip	1274.00	386.57	30.34	1274.00	1204.91	0.00	15000.00	12730.44	84.87	15000.00	8229.99	0.00
Total IOC	5877.00	5596.81	95.23	5877.00	6280.05	106.86	69200.00	69001.18	99.71	69200.00	65190.52	94.21
10. BPCL, Mumbai	1019.00	1267.97	124.43	1019.00	685.50	67.27	12000.00	14054.06	117.12	12000.00	13541.11	112.84
11. BPCL, Kochi	1316.00	1396.22	106.10	807.00	1117.71	138.50	15500.00	14094.60	90.93	9500.00	11820.46	124.43
Total BPCL	2336.00	2664.19	114.05	1826.00	1803.21	98.75	27500.00	28148.65	102.36	21500.00	25361.57	117.96
12. HPCL, Mumbai	637.00	740.20	116.20	552.00	760.03	137.69	7500.00	8641.17	115.22	6500.00	8510.32	130.93
13. HPCL, Visakh	705.00	850.40	120.62	705.00	861.30	122.17	8300.00	9635.01	116.08	8300.00	9335.24	112.47
Total HPCL	1342.00	1590.60	118.52	1257.00	1621.33	128.98	15800.00	18276.18	115.67	14800.00	17845.56	120.58
14. CPCL, Manali	892.00	932.91	104.59	892.00	701.62	78.66	10500.00	10288.83	97.99	10500.00	9725.33	92.62
15. CPCL, CBR	85.00	49.06	57.72	85.00	50.98	59.98	1000.00	500.18	50.02	1000.00	530.79	53.08
Total CPCL	977.00	981.97	100.51	977.00	752.60	77.03	11500.00	10789.01	93.82	11500.00	10256.13	89.18
16. NRL, Numaligarh	255.00	217.34	85.23	255.00	229.51	90.00	3000.00	2809.43	93.65	3000.00	2683.12	89.44
17. MRPL, Mangalore	1274.00	1469.45	115.34	1274.00	1445.66	113.47	15000.00	16129.77	107.53	15000.00	15965.30	106.44
18. ONGC, Tatipaka	6.00	6.50	108.31	6.00	7.45	124.17	66.00	79.58	120.58	66.00	85.64	129.76
B. Joint Venture	1469.00	1534.05	104.43	1274.00	1347.74	105.79	17300.00	15538.10	89.82	15000.00	16881.52	112.54
19. BORL, Bina	510.00	569.16	111.60	510.00	618.67	121.31	6000.00	6707.90	111.80	6000.00	6360.06	106.00
20. HMEL, GGSR, Bhatinda	960.00	964.88	100.51	764.00	729.08	95.43	11300.00	8830.20	78.14	9000.00	10521.46	116.91
C. Private Sector	7491.00	7059.82	94.24	6795.00	7825.35	115.16	88200.00	91162.93	103.36	80000.00	91092.76	113.87
21. RIL, Jamnagar	2803.00	2847.82	101.60	2803.00	2784.79	99.35	33000.00	33152.75	100.46	33000.00	32823.15	99.46
22. RIL, SEZ	2990.00	2426.71	81.16	2293.00	3279.76	143.03	35200.00	37317.30	106.02	27000.00	37350.72	138.34
Total RIL	5792.00	5274.52	91.07	5096.00	6064.54	119.01	68200.00	70470.05	103.33	60000.00	70173.87	116.96
23. EOL, Vadinar	1699.00	1785.29	105.08	1699.00	1760.81	103.64	20000.00	20692.88	103.46	20000.00	20918.89	104.59
TOTAL(A+B+C)	21026.00	21120.72	100.45	19540.00	21312.91	109.07	247566.00	251934.82	101.76	230066.00	245362.12	106.65

*: Provisional. **: Revised

Note: Refinery capacity as on 01.12.2017 is 247.566 MMT

MINISTRY OF PETROLEUM & NATURAL GAS

Production of Petroleum Products during the month of March, 2018 and cumulatively for the period April-March, 2017-18 vis-à-vis April-March, 2016-17

Annexure-V

(Para 3.4)

(Qty: '000' Tonnes)

Name of Undertaking/Unit	Planned production during the month	Production during the			Cumulative Production			% variation over last year		% variation during the month under review over planned production
		Month under review *	Corresponding month of last year	Preceding month of current year **	(April-March)			During the month under review	Upto the end of the period	
					Planned production during current year	Actual production during current year*	Actual production during corresponding period of last year**			
(1)	(2)	(3)	(4)	(5)	(6)	(7)	(8)	(9)	(10)	(11)
I. Refinery										
A. Public Sector	12091.641	12110.160	11677.752	11104.688	131386.085	137820.412	129243.956	3.70	6.64	0.15
1. IOC, Guwahati	77.782	98.401	102.078	86.414	905.500	1141.857	1121.191	-3.60	1.84	26.51
2. IOC, Barauni	521.136	561.282	483.039	497.625	5293.300	5507.430	5881.053	16.20	-6.35	7.70
3. IOC, Gujarat	1178.092	1216.920	1185.235	1118.089	12196.297	13271.454	13105.684	2.67	1.26	3.30
4. IOC, Haldia	629.572	672.573	664.199	610.472	6963.761	7166.819	6981.925	1.26	2.65	6.83
5. IOC, Mathura	800.064	866.905	842.432	713.374	8210.048	9150.809	8915.509	2.91	2.64	8.35
6. IOC, Digboi	44.083	62.103	51.827	44.589	504.000	665.422	541.850	19.83	22.81	40.88
7. IOC, Panipat	1390.182	1488.300	1475.973	1319.752	15247.311	15888.741	15832.960	0.84	0.35	7.06
8. IOC, Bongaigaon	186.464	213.364	229.019	202.115	2114.300	2241.290	2272.780	-6.84	-1.39	14.43
9. IOC, Paradip	1149.004	350.799	1045.768	692.255	11427.000	11431.820	6919.801	-66.46	65.20	-69.47
Total IOC	5976.380	5530.647	6079.570	5284.685	62861.517	66465.642	61572.753	-9.03	7.95	-7.46
10. BPCL, Mumbai	1195.583	1236.503	656.644	1156.954	12733.587	13638.175	13012.535	88.31	4.81	3.42
11. BPCL, Kochi	1165.892	1299.253	1088.922	1116.424	12677.366	13307.311	11193.909	19.32	18.88	11.44
Total BPCL	2361.475	2535.756	1745.566	2273.378	25410.953	26945.486	24206.444	45.27	11.32	7.38
12. HPCL, Mumbai	611.772	731.621	712.258	665.477	7798.327	8126.298	7952.184	2.72	2.19	19.59
13. HPCL, Visakh	766.619	789.715	851.618	718.502	8780.200	8900.945	8652.959	-7.27	2.87	3.01
Total HPCL	1378.391	1521.336	1563.876	1383.979	16578.528	17027.243	16605.143	-2.72	2.54	10.37
14. CPCL, Manali	812.755	854.812	715.979	748.476	8849.446	9331.072	8963.475	19.39	4.10	5.17
15. CPCL, CBR	42.672	48.163	50.976	35.109	502.424	501.948	532.237	-5.52	-5.69	12.87
Total CPCL	855.427	902.975	766.955	783.585	9351.870	9833.020	9495.712	17.74	3.55	5.56
16. NRL, Numaligarh	226.283	234.576	217.383	192.118	2665.567	2823.493	2653.116	7.91	6.42	3.66
17. MRPL, Mangalore	1288.404	1378.501	1297.163	1181.130	14457.651	14650.162	14628.617	6.27	0.15	6.99
18. ONGC, Tatipaka	5.280	6.369	7.239	5.813	60.000	75.365	82.171	-12.03	-8.28	20.62
B. Joint Venture	1368.750	1427.980	1331.408	1315.949	14139.850	14463.813	15727.709	7.25	-8.04	4.33
19. BORL, Bina	474.450	524.287	526.723	430.364	5414.450	6093.663	5766.545	-0.46	5.67	10.50
20. HMEL, GGSR, Bhatinda	894.300	903.693	804.685	885.585	8725.400	8370.150	9961.164	12.30	-15.97	1.05
C. Private Sector	8267.747	8067.941	8446.881	7698.119	93731.424	97497.508	94284.817	-4.49	3.41	-2.42
21. RIL, Jamnagar	2821.582	3024.148	2821.582	2700.357	32927.173	33561.218	32927.173	7.18	1.93	7.18
22. RIL, SEZ	3829.832	3347.629	3829.832	3454.194	41261.251	44178.163	41261.251	-12.59	7.07	-12.59
Total RIL	6651.414	6371.777	6651.414	6154.551	74188.424	77739.381	74188.424	-4.20	4.79	-4.20
23. EOL, Vadinar	1616.333	1696.164	1795.467	1543.568	19543.000	19758.127	20096.393	-5.53	-1.68	4.94
TOTAL(A+B+C)	21728.138	21606.081	21456.041	20118.756	239257.359	249781.733	239256.482	0.70	4.40	-0.56
II. Fractionators										
ONGC	274.298	313.696	283.569	258.595	3237.023	3295.886	3148.677	10.62	4.68	14.36
OIL	3.200	3.401	2.920	2.942	32.000	34.110	34.580	16.47	-1.36	6.28
GAIL	90.104	124.566	90.809	96.342	1050.006	1278.000	1111.082	37.17	15.02	38.25
D. Total Fractionators	367.602	441.663	377.298	357.879	4319.029	4607.996	4294.339	17.06	7.30	20.15
Grand Total (A+B+C+D)	22095.741	22047.744	21833.340	20476.635	243576.388	254389.729	243550.821	0.98	4.45	-0.22

Note: 1. Totals may not tally due to rounding off figures.

*: Provisional. **: Revised

2. Target for the year 2017-18 (Month-wise) reconciled.