

Government of India
Ministry of Petroleum and Natural Gas
Economic & Statistics Division

New Delhi
 Dated the 23rd July, 2018

Monthly Production Report
June, 2018

1. Crude Oil

Crude oil production¹ during June, 2018 was 2884.39 TMT which is 3.17% lower than target and 3.39% lower when compared with June, 2017. Cumulative crude oil production during April-June, 2018 was 8807.25 TMT which is 1.46% lower than target for the period and 2.40% lower than production during corresponding period of last year. Unit-wise and State-wise crude oil production is given at **Annexure-I**. Unit-wise crude oil production for the month of June, 2018 and cumulatively for the period April-June, 2018 vis-à-vis same period of last year has been shown in Table-1 and month-wise in Figure-1.

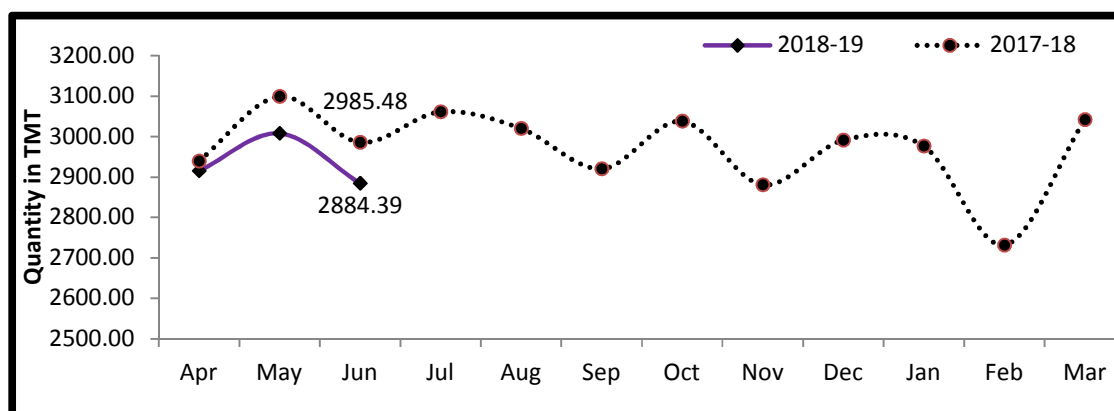
Table-1: Crude Oil Production (in TMT)

Oil Company	Target	June (Month)				April-June (Cumulative)			
	2018-19 (Apr-Mar)	2018-19		2017-18	% over last year	2018-19		2017-18	% over last year
		Target	Prod.*	Prod.		Target	Prod.*	Prod.	
ONGC	23040.00	1840.60	1774.08	1860.42	95.36	5502.22	5392.34	5641.70	95.58
OIL	3738.00	292.34	278.54	278.76	99.92	870.07	837.90	840.45	99.70
PSC Fields	10233.60	845.75	831.77	846.31	98.28	2565.31	2577.01	2541.82	101.38
Total	37011.60	2978.69	2884.39	2985.48	96.61	8937.61	8807.25	9023.98	97.60

Note: Totals may not tally due to rounding off.

*: Provisional

Figure-1: Monthly Crude Oil Production



¹Including condensate

Unit-wise production details with reasons for shortfall are as under:

- 1.1 Crude oil production by **ONGC** during June, 2018 was 1774.08 TMT which is 3.61% lower than the monthly target and 4.64% lower when compared with June, 2017. Cumulative crude oil production by ONGC during April-June, 2018 was 5392.34 TMT which is 2% lower than target for the period and lower by 4.42% than production during corresponding period of last year. Reasons for shortfall are as under:
 - ESP problem in wells of NBP field (Rig deployment post monsoon).
 - Increasing water cut in B-173 and Neelam field & less than anticipated production from some wells of Vasai East field.
 - Sub-sea leakage of some well fluid lines of Mumbai High & Neelam Heera Asset, leading to flow restriction.
- 1.2 Crude oil production by **OIL** during June, 2018 was 278.54 TMT which is 4.72% lower than monthly target and 0.08% lower when compared with June, 2017. Cumulative crude oil production by OIL during April-June, 2018 was 837.90 TMT which is 3.70% lower than target for the period and 0.30% lower than production during the corresponding period of last year. Major reason for lower production is less than planned contribution from work over wells and drilling wells.
- 1.3 Crude oil production by **Pvt/JVs** during June, 2018 was 831.77 TMT which is 1.65% lower than the monthly target and 1.72% lower than June, 2017. Cumulative crude oil production by Pvt/JVs during April-June, 2018 was 2577.01 TMT which is 0.46 % higher than target for the period and 1.38% higher than the production during the corresponding period of last year. Reasons for shortfall were natural decline in Ravva & Panna-Mukta field and restricted polymer injection due to drilling activities in Mangala.

2. Natural Gas

Natural gas production during June, 2018 was 2677.91 MMSCM which is 8.59% lower than the target for the month and 2.82% lower when compared with June, 2017. Cumulative natural gas production during April-June, 2018 was 8068.91 MMSCM which is 6.98% lower than target for the period but 0.14% higher than the production during corresponding period of last year. Unit-wise and state-wise natural gas production is given at **Annexure-II**. Unit-wise natural gas production for the month of June, 2018 and cumulatively for the period April-June, 2018 vis-à-vis same period of last year has been shown in Table-2 and month-wise in Figure-2.

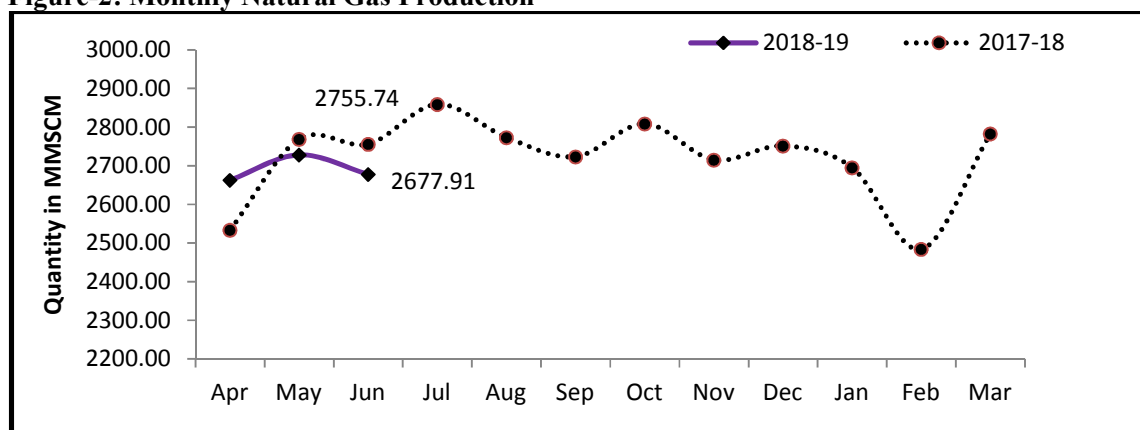
Table-2: Natural Gas Production (MMSCM)

Oil Company	Target	June (Month)				April-June (Cumulative)			
	2018-19 (Apr-Mar)	2018-19		2017-18	% over last year	2018-19		2017-18	% over last year
		Target	Prod.*	Prod.		Target	Prod.*	Prod.	
ONGC	25981.00	2121.03	1952.64	1974.68	98.88	6261.26	5906.28	5729.02	103.09
OIL	3120.06	262.44	220.49	237.36	92.90	785.06	669.35	723.52	92.51
PSC Fields	6498.11	546.19	504.78	543.70	92.84	1628.09	1493.28	1605.45	93.01
Total	35599.17	2929.67	2677.91	2755.74	97.18	8674.41	8068.91	8057.99	100.14

Note: Totals may not tally due to rounding off.

*: Provisional

Figure-2: Monthly Natural Gas Production



2.1 Natural gas production by **ONGC** during June, 2018 was 1952.64 MMSCM which is 7.94% lower than the monthly target but 1.12% lower when compared with June, 2017. Cumulative natural gas production by ONGC during April-June, 2018 was 5906.28 MMSCM which is 5.67 % lower than the cumulative target but 3.09% higher than the production during the corresponding period of the last year. The reasons for shortfall are as under:

- Closure of wells on account of commissioning new GDU in Rajahmundry.
- Less off-take by consumers in Tripura & Karaikal

2.2 Natural gas production by **OIL** during June, 2018 was 220.49 MMSCM which is 15.98% lower than the monthly target and 7.10% lower than June, 2017. Cumulative natural gas production by OIL during April-June, 2018 was 669.35 MMSCM which is 14.74% lower than the cumulative target and 7.49% lower than the production during the corresponding period of last year. The reasons for shortfall in production are as under:

- Operational loss due to flow line repair etc.
- Environmental issues.

2.3 Natural gas production by **Pvt/JVs** during June, 2018 was 504.78 MMSCM which is 7.58% lower than the monthly target and 7.16% lower when compared with June, 2017. Cumulative natural gas production by Pvt/JVs during April-June, 2018 was 1493.28 MMSCM which is 8.28% lower than the cumulative target and 6.99% lower than the production during the corresponding period of last year. Reasons for shortfall in production are as under:

- KG-DWN-98/3 (RIL): Closure of 2 wells in D1D3 and 1 well in MA field. Well B6 ceased to flow on 30.04.2018.
- Raniganj East (Essar): Few wells closed for planned maintenance and refrac jobs. Major customer 'Matix' under operational shutdown.
- Sohagpur West (RIL): Underperformance of CBM wells.

3. Refinery Production (in terms of crude oil processed)

Refinery production during June, 2018 was 21865.02 TMT which is 1.29% higher than the target for the month and 9.06% higher when compared with June, 2017. Cumulative production during April-June, 2018 was 63958.95 TMT which is 0.30% higher than the target for the period and 5.02% higher than the production during corresponding period of last year. Unit-wise production is given at **Annexure-III**. Company-wise production for the month of June, 2018 and cumulatively for the period April-June, 2018 vis-à-vis same period of last year has been shown in Table-3 and month-wise in Figure-3.

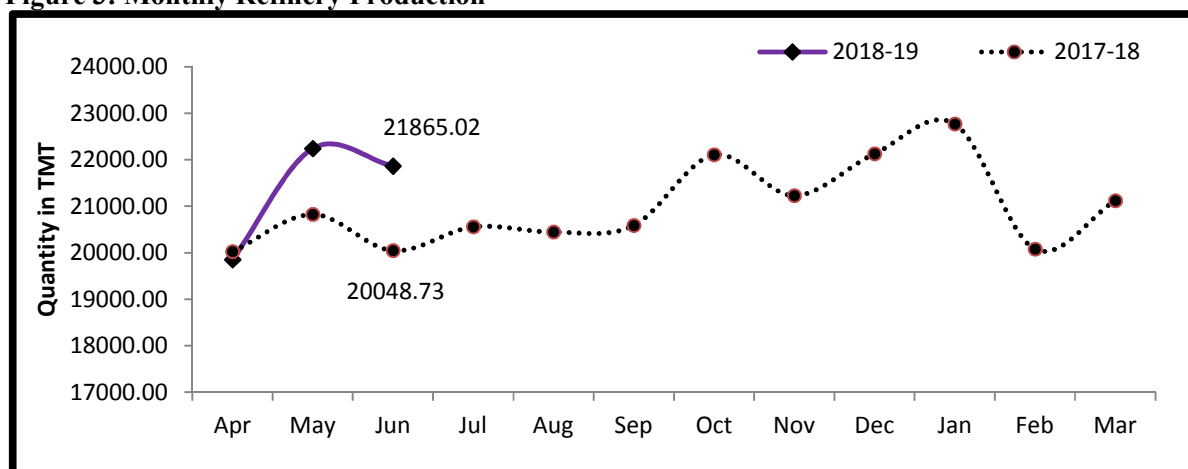
Table 3: Refinery Production (TMT)

Oil Company	Target	June (Month)				April-June (Cumulative)			
	2018-19 (Apr-Mar)	2018-19		2017-18	% over last year	2018-19		2017-18	% over last year
		Target	Prod.*	Prod.		Target	Prod.*	Prod.	
CPSE	147759	12710.14	12697.66	12074.38	105.16	36885.60	37125.58	35693.50	104.01
IOCL	71150	6110.08	6071.38	5729.44	105.97	17679.07	17666.43	17520.83	100.83
BPCL	29000	2570.98	2582.92	2243.35	115.14	7336.69	7774.39	6338.05	122.66
HPCL	18000	1504.56	1507.14	1476.84	102.05	4563.83	4521.16	4493.37	100.62
CPCL	10500	937.50	917.02	963.88	95.14	2732.50	2620.51	2588.93	101.22
NRL	2850	234.25	237.57	234.04	101.51	710.55	675.81	704.51	95.93
MRPL	16200	1350.00	1378.20	1419.24	97.11	3850.00	3851.24	4027.15	95.63
ONGC	59	2.77	3.44	7.58	45.30	12.97	16.05	20.66	77.69
JVs	17240	1485.00	1650.99	586.91	281.30	4393.00	4843.07	2594.84	186.64
BORL	6400	595.00	615.88	586.91	104.94	1690.00	1718.31	1773.20	96.90
HMEL	10840	890.00	1035.11	0.00	0.00	2703.00	3124.76	821.64	380.31
Private	88896	7391.10	7516.37	7387.44	101.75	22489.05	21990.31	22613.29	97.25
RIL	70470	5723.77	5792.38	5723.77	101.20	17487.05	16746.76	17487.05	95.77
EOL	18426	1667.33	1723.99	1663.67	103.63	5002.00	5243.55	5126.24	102.29
TOTAL	253895	21586.24	21865.02	20048.73	109.06	63767.66	63958.95	60901.63	105.02

Note: Totals may not tally due to rounding off.

*: Provisional

Figure 3: Monthly Refinery Production



3.1 **CPSE Refineries' production** during June, 2018 was 12697.66 TMT which is 0.10% lower than the target for the month and 5.16% higher when compared with June, 2017. Cumulative production by CPSE refineries during April-June, 2018 was 37125.58 TMT which is 0.65% higher than the target for the period and 4.01% higher than the production during corresponding period of last year. Reasons for shortfall of refinery production in some CPSE refineries are as under:

- IOCL, Guwahati: Throughput is higher due to deferment of M&I shutdown of CDU/DCU/HDT.
- IOCL, Barauni: Throughput is lower due to Naphtha Containment.
- IOCL, Gujarat: Throughput lower due to low North Gujarat Crude receipt and Gas oil Ullage creation for DHDS revamp shutdown in Jul'18.
- IOCL, Paradip: Throughput is marginally lower than plan due to PCK (pipeline compatible kerosene) run in DHDT.
- BPCL, Kochi: Throughput is lower due to shutdown during this month.
- HPCL, Mumbai: Throughput is lower due to unplanned slowdown of primary units.
- CPCL, Manali: Throughput is lower than target due to sulphur containment problem.

3.2 **Production in JV refineries** during June, 2018 was 1650.99 TMT which is 11.18% higher than the target for the month and 181.30% higher when compared with June, 2017. Cumulative production by JVs refineries during April-June, 2018 was 4843.07 TMT which is 10.25% higher than the target for the period and 86.64% higher than the production during corresponding period of last year. The major reason for high variation in production was major turnaround in HMEL refinery undertaken during April - June, 2017.

3.3 **Production in private refineries** during June, 2018 was 7516.37 TMT which is higher by 1.69% than the target for the month and 1.75% higher when compared with June, 2017. Cumulative production by private refineries during April-June, 2018 was 21990.03 TMT which is 2.22% lower than the target for the period and lower by 2.75% compared to production during corresponding period of last year.

3.4 Refinery-wise details of the capacity utilization and production of petroleum products during the month of June, 2018 and cumulatively for the period April-June, 2018 vis-à-vis April-June, 2017 are given at **Annexures - IV and V** respectively.

MINISTRY OF PETROLEUM & NATURAL GAS

Annexure-I

Crude Oil Production during the month of June, 2018 and cumulatively for the period April-June, 2018 vis-à-vis April-June, 2017

(Para 1)

(Qty: '000' Tonnes)

Name of Undertaking/Unit/State	Planned production during the month*	Production during the			Cumulative Production			% variation over last year		% variation during the month under review over planned production
		Month under review *	Corresponding month of last year **	Preceding month of current year **	(April-June)			year		
					Planned production during current year*	Actual production during current year *	Actual production during corresponding period of last year **	During the month under review	Upto the end of the period	
(1)	(2)	(3)	(4)	(5)	(6)	(7)	(8)	(9)	(10)	(11)
1. ONGC	1840.60	1774.08	1860.42	1840.93	5502.22	5392.34	5641.70	-4.64	-4.42	-3.61
Onshore	500.47	497.45	494.70	515.02	1513.58	1508.55	1506.29	0.56	0.15	-0.60
Andhra Pradesh	29.37	21.67	26.06	25.52	89.23	72.65	83.10	-16.87	-12.58	-26.25
Assam ^	82.85	79.62	81.93	83.13	248.92	243.59	245.77	-2.81	-0.88	-3.89
Gujarat	370.69	372.04	363.94	382.89	1122.57	1123.04	1112.69	2.22	0.93	0.36
Tamil Nadu	17.56	24.13	22.77	23.48	52.86	69.27	64.74	5.94	6.99	37.37
Offshore	1340.13	1276.63	1365.71	1325.91	3988.64	3883.79	4135.41	-6.52	-6.08	-4.74
Eastern Offshore	0.66	1.17	0.64	0.99	1.94	3.32	2.12	82.95	56.33	78.01
Western Offshore	1226.73	1149.63	1245.49	1199.03	3654.36	3500.44	3788.12	-7.70	-7.59	-6.28
Condensates	112.74	125.82	119.58	125.89	332.34	380.02	345.16	5.22	10.10	11.61
2. OIL (Onshore)	292.34	278.54	278.76	285.02	870.07	837.90	840.45	-0.08	-0.30	-4.72
Assam	291.62	277.77	278.09	284.19	867.87	835.57	837.97	-0.11	-0.29	-4.75
Arunachal Pradesh	0.54	0.57	0.62	0.59	1.66	1.73	1.88	-7.61	-7.87	5.94
Rajasthan (heavy oil)	0.18	0.20	0.05	0.24	0.55	0.59	0.60	300.19	-1.32	9.50
3. Private / JVC	845.75	831.77	846.31	881.89	2565.31	2577.01	2541.82	-1.72	1.38	-1.65
Onshore	696.11	664.25	676.86	717.80	2112.39	2097.43	2054.60	-1.86	2.08	-4.58
Andhra Pradesh	2.33	0.96	0.00	0.46	8.57	2.11	0.00	-	-	-58.65
Arunachal Pradesh	3.60	2.99	3.66	3.24	10.83	9.39	11.23	-18.31	-16.40	-17.07
Assam	3.42	2.75	0.00	2.16	10.37	6.13	0.00	-	-	-19.56
Gujarat	15.13	11.95	10.90	12.15	45.36	36.16	33.40	9.61	8.28	-21.06
Rajasthan	661.53	638.59	655.10	693.24	2006.66	2023.55	1989.39	-2.52	1.72	-3.47
Tamil Nadu	10.09	7.01	7.19	6.56	30.59	20.09	20.59	-2.54	-2.41	-30.49
Offshore	149.64	167.52	169.45	164.09	452.92	479.58	487.22	-1.14	-1.57	11.95
Eastern Offshore	53.26	56.30	75.99	49.70	165.29	165.59	225.66	-25.91	-26.62	5.72
Gujarat Offshore	47.03	60.39	32.11	61.25	144.96	171.33	91.41	88.07	87.43	28.41
Western Offshore	49.36	50.83	61.35	53.14	142.67	142.66	170.15	-17.15	-16.15	2.97
GRAND TOTAL (1+2+3)	2978.69	2884.39	2985.48	3007.84	8937.61	8807.25	9023.98	-3.39	-2.40	-3.17
Onshore	1488.92	1440.24	1450.32	1517.84	4496.05	4443.88	4401.35	-0.69	0.97	-3.27
Offshore	1489.77	1444.15	1535.17	1490.00	4441.56	4363.37	4622.63	-5.93	-5.61	-3.06

Note: Totals may not tally due to rounding off figures.

^: Includes crude oil production of Tripura

*: Provisional. **: Revised

Reasons for shortfall are indicated in the note.

MINISTRY OF PETROLEUM & NATURAL GAS

Annexure-II

Natural Gas Production during the month of June, 2018 and cumulatively for the period April-June, 2018 vis-à-vis April-June, 2017

(Para 2)

(Qty: Million Cubic Meters)

Name of Undertaking/Unit/State	Planned production during the month*	Production during the			Cumulative Production (April-June)			% variation over last year		% variation during the month under review over planned production
		Month under review *	Corresponding month of last year **	Preceding month of current year **	Planned production during current year*	Actual production during current year *	Actual production during corresponding period of last year **	During the month under review	Upto the end of the period	
(1)	(2)	(3)	(4)	(5)	(6)	(7)	(8)	(9)	(10)	(11)
1. ONGC	2121.03	1952.64	1974.68	1981.60	6261.26	5906.28	5729.02	-1.12	3.09	-7.94
Onshore	481.32	430.75	465.79	477.36	1438.92	1379.14	1404.40	-7.52	-1.80	-10.51
Andhra Pradesh	91.52	67.36	70.90	96.68	278.54	265.05	215.96	-5.00	22.73	-26.40
Assam	38.66	40.66	41.56	40.59	116.29	121.07	123.14	-2.18	-1.68	5.18
Gujarat	126.71	108.96	133.08	112.92	390.13	332.17	404.43	-18.13	-17.87	-14.01
Rajasthan	0.46	0.68	0.26	0.69	1.40	2.01	0.92	157.22	118.55	47.37
Tamil Nadu	95.67	95.69	98.82	102.42	291.69	297.24	287.07	-3.17	3.54	0.02
Tripura	128.30	117.41	121.15	124.07	360.88	361.61	372.89	-3.09	-3.03	-8.49
Offshore	1639.71	1521.89	1508.89	1504.23	4822.34	4527.14	4324.62	0.86	4.68	-7.19
Eastern Offshore	175.55	65.10	48.99	49.17	441.84	176.80	152.88	32.89	15.65	-62.92
Western Offshore	1464.16	1456.79	1459.90	1455.06	4380.50	4350.34	4171.73	-0.21	4.28	-0.50
2. OIL	262.44	220.49	237.36	227.44	785.06	669.35	723.52	-7.10	-7.49	-15.98
Assam	243.72	201.70	219.23	207.68	728.28	611.42	667.78	-8.00	-8.44	-17.24
Arunachal Pradesh	1.05	0.95	0.96	1.02	3.19	2.94	2.91	-0.99	0.93	-9.90
Rajasthan	17.67	17.85	17.17	18.75	53.60	54.99	52.83	3.94	4.09	1.01
3. Private / JVC	546.19	504.78	543.70	519.00	1628.09	1493.28	1605.45	-7.16	-6.99	-7.58
Onshore	144.67	143.92	112.17	144.78	428.90	418.79	329.23	28.30	27.20	-0.52
Andhra Pradesh	1.25	0.39	0.00	0.20	3.71	0.93	0.00	-	-	-68.51
Assam	29.73	1.74	0.00	1.90	90.19	5.49	0.00	-	-	-94.16
Arunachal Pradesh	0.81	25.42	1.28	21.58	2.46	59.54	4.01	1882.44	1385.11	3032.18
Gujarat	5.94	6.11	6.82	6.36	18.13	18.32	20.45	-10.47	-10.38	2.75
Rajasthan	104.29	108.84	102.94	113.43	306.40	330.54	301.85	5.73	9.50	4.36
Tamil Nadu	2.64	1.43	1.13	1.31	8.01	3.97	2.92	26.57	35.67	-45.98
CBM	128.40	58.16	50.22	62.65	389.48	183.75	144.95	15.82	26.77	-54.70
Jharkhand (CBM)	0.35	0.23	0.33	0.18	1.05	0.67	1.04	-29.22	-35.70	-32.46
Madhya Pradesh (CBM)	76.71	29.34	4.18	31.69	232.68	92.18	8.59	601.50	972.82	-61.75
West Bengal (CBM)	51.35	28.59	45.71	30.78	155.75	90.90	135.32	-37.45	-32.83	-44.32
Offshore	273.13	302.69	381.31	311.58	809.72	890.74	1131.27	-20.62	-21.26	10.83
Eastern Offshore	123.86	146.10	208.68	149.56	386.07	453.42	665.61	-29.99	-31.88	17.96
Gujarat Offshore	12.30	8.70	9.04	9.09	38.40	25.41	21.26	-3.79	19.50	-29.28
Western Offshore	136.97	147.90	163.59	152.93	385.25	411.91	444.40	-9.59	-7.31	7.98
TOTAL (1+2+3)	2929.67	2677.91	2755.74	2728.04	8674.41	8068.91	8057.99	-2.82	0.14	-8.59
CBM	128.40	58.16	50.22	62.65	389.48	183.75	144.95	15.82	26.77	-54.70
Onshore	888.44	795.16	815.32	849.58	2652.88	2467.28	2457.15	-2.47	0.41	-10.50
Offshore	1912.83	1824.58	1890.20	1815.81	5632.06	5417.88	5455.89	-3.47	-0.70	-4.61

Note: Totals may not tally due to rounding off figures.

*: Provisional. **: Revised

CBM: Coal Bed Methane production.

Reasons for shortfall are indicated in the note.

MINISTRY OF PETROLEUM & NATURAL GAS

Annexure-III

Crude Oil Processed during the month of June, 2018 and cumulatively for the period April-June, 2018 vis-à-vis April-June, 2017

(Para 3)

(Qty: '000' Tonnes)

Name of Undertaking/Unit	Planned production during the month*	Production during the			Cumulative Production			% variation over last year		% variation during the month under review over planned production
		Month under review *	Corresponding month of last year	Preceding month of current year **	(April-June)			During the month under	Upto the end of the period	
					Planned production during current year*	Actual production during current year *	Actual production during corresponding period of last year **			
(1)	(2)	(3)	(4)	(5)	(6)	(7)	(8)	(9)	(10)	(11)
A. Public Sector	12710.14	12697.66	12074.38	12792.66	36885.60	37125.58	35693.50	5.16	4.01	-0.10
1. IOC, Guwahati	66.00	90.73	64.18	91.93	246.00	272.66	238.23	41.37	14.45	37.46
2. IOC, Barauni	547.63	475.16	550.13	591.89	1661.16	1639.60	1641.70	-13.63	-0.13	-13.23
3. IOC, Gujarat	1214.97	1166.37	784.53	1198.51	3720.97	3609.73	3078.61	48.67	17.25	-4.00
4. IOC, Haldia	670.00	687.72	673.28	638.91	2005.00	2011.93	2039.23	2.14	-1.34	2.65
5. IOC, Mathura	810.00	841.90	826.10	858.82	2487.37	2547.38	2447.46	1.91	4.08	3.94
6. IOC, Digboi	54.00	56.34	52.49	58.20	164.00	170.36	160.10	7.32	6.41	4.33
7. IOC, Panipat	1320.00	1345.67	1310.35	1384.82	4004.00	4081.89	4038.74	2.70	1.07	1.94
8. IOC, Bongaigaon	180.82	195.85	201.57	196.57	544.69	576.61	576.47	-2.84	0.02	8.31
9. IOC, Paradip	1246.66	1211.64	1266.81	1265.53	2845.87	2756.26	3300.31	-4.35	-16.48	-2.81
Total IOC	6110.08	6071.38	5729.44	6285.17	17679.07	17666.43	17520.83	5.97	0.83	-0.63
10. BPCL, Mumbai	1179.03	1267.64	1110.40	1231.50	3394.72	3745.59	3084.74	14.16	21.42	7.52
11. BPCL, Kochi	1391.95	1315.28	1132.95	1448.93	3941.97	4028.79	3253.30	16.09	23.84	-5.51
Total BPCL	2570.98	2582.92	2243.35	2680.43	7336.69	7774.39	6338.05	15.14	22.66	0.46
12. HPCL, Mumbai	706.04	674.95	705.23	733.11	2141.64	2109.98	2131.88	-4.29	-1.03	-4.40
13. HPCL, Visakh	798.52	832.19	771.61	813.81	2422.19	2411.17	2361.49	7.85	2.10	4.22
Total HPCL	1504.56	1507.14	1476.84	1546.91	4563.83	4521.16	4493.37	2.05	0.62	0.17
14. CPCL, Manali	900.00	875.58	915.28	806.54	2620.00	2509.05	2462.59	-4.34	1.89	-2.71
15. CPCL, CBR	37.50	41.45	48.61	34.68	112.50	111.46	126.34	-14.73	-11.78	10.52
Total CPCL	937.50	917.02	963.88	841.22	2732.50	2620.51	2588.93	-4.86	1.22	-2.18
16. NRL, Numaligarh	234.25	237.57	234.04	213.79	710.55	675.81	704.51	1.51	-4.07	1.42
17. MRPL, Mangalore	1350.00	1378.20	1419.24	1219.28	3850.00	3851.24	4027.15	-2.89	-4.37	2.09
18. ONGC, Tatipaka	2.77	3.44	7.58	5.87	12.97	16.05	20.66	-54.70	-22.31	23.87
B. Joint Venture	1485.00	1650.99	586.91	1691.43	4393.00	4843.07	2594.84	181.30	86.64	11.18
19. BORL, Bina	595.00	615.88	586.91	640.08	1690.00	1718.31	1773.20	4.94	-3.10	3.51
20. HMEL, GGSR, Bhatinda	890.00	1035.11	0.00	1051.35	2703.00	3124.76	821.64	-	280.31	16.30
C. Private Sector	7391.10	7516.37	7387.44	7757.00	22489.05	21990.31	22613.29	1.75	-2.75	1.69
21. RIL, Jammagar	2622.92	2701.37	2622.92	2782.67	8030.05	8169.85	8030.05	2.99	1.74	2.99
22. RIL, SEZ	3100.85	3091.01	3100.85	3184.62	9457.01	8576.91	9457.01	-0.32	-9.31	-0.32
Total RIL	5723.77	5792.38	5723.77	5967.28	17487.05	16746.76	17487.05	1.20	-4.23	1.20
23. Nyaara, Vadinar	1667.33	1723.99	1663.67	1789.72	5002.00	5243.55	5126.24	3.63	2.29	3.40
TOTAL(A+B+C)	21586.24	21865.02	20048.73	22241.09	63767.66	63958.95	60901.63	9.06	5.02	1.29

Note: Totals may not tally due to rounding off figures. *: Provisional. **:Revised

Reasons for shortfall are indicated in the note.

MINISTRY OF PETROLEUM & NATURAL GAS

Annexure-IV

Refinery-wise Capacity Utilisation during the month of June, 2018 and cumulatively for the period April-June, 2018 vis-à-vis April-June, 2017

(Para 3.4)

(Qty: '000' Tonnes)

Name of Undertaking/Unit	June, 2018			June, 2017			Cumulative (April - June)					
	Prorated Installed Capacity	Actual Crude T'put *	% Utilisation of Installed Capacity	Prorated Installed Capacity	Actual Crude T'put	% Utilisation of Installed Capacity	2018-19			2017-18		
							Prorated Installed Capacity	Actual Crude T'put *	% Utilisation of Installed Capacity	Prorated Installed Capacity	Actual Crude T'put **	% Utilisation of Installed Capacity
(1)	(2)	(3)	(4)	(5)	(6)	(7)	(8)	(9)	(10)	(11)	(12)	(13)
A. Public Sector	11677.00	12697.66	108.74	11424.00	12074.38	105.69	35419.00	37125.58	104.82	34654.00	35693.50	103.00
1. IOC, Guwahati	82.00	90.73	110.64	82.00	64.18	78.27	249.00	272.66	109.50	249.00	238.23	95.67
2. IOC, Barauni	493.00	475.16	96.38	493.00	550.13	111.59	1496.00	1639.60	109.60	1496.00	1641.70	109.74
3. IOC, Gujarat	1126.00	1166.37	103.58	1126.00	784.53	69.67	3416.00	3609.73	105.67	3416.00	3078.61	90.12
4. IOC, Haldia	616.00	687.72	111.64	616.00	673.28	109.30	1870.00	2011.93	107.59	1870.00	2039.23	109.05
5. IOC, Mathura	658.00	841.90	127.95	658.00	826.10	125.55	1995.00	2547.38	127.69	1995.00	2447.46	122.68
6. IOC, Digboi	53.00	56.34	106.30	53.00	52.49	99.05	162.00	170.36	105.16	162.00	160.10	98.83
7. IOC, Panipat	1233.00	1345.67	109.14	1233.00	1310.35	106.27	3740.00	4081.89	109.14	3740.00	4038.74	107.99
8. IOC, Bongaigaon	193.00	195.85	101.48	193.00	201.57	104.44	586.00	576.61	98.40	586.00	576.47	98.37
9. IOC, Paradip	1233.00	1211.64	98.27	1233.00	1266.81	0.00	3740.00	2756.26	73.70	3740.00	3300.31	0.00
Total IOC	5688.00	6071.38	106.74	5688.00	5729.44	100.73	17253.00	17666.43	102.40	17253.00	17520.83	101.55
10. BPCL, Mumbai	986.00	1267.64	128.56	986.00	1110.40	112.62	2992.00	3745.59	125.19	2992.00	3084.74	103.10
11. BPCL, Kochi	1274.00	1315.28	103.24	1019.00	1132.95	111.18	3864.00	4028.79	104.26	3092.00	3253.30	105.22
Total BPCL	2260.00	2582.92	114.29	2005.00	2243.35	111.89	6856.00	7774.39	113.40	6083.00	6338.05	104.19
12. HPCL, Mumbai	616.00	674.95	109.57	616.00	705.23	114.49	1870.00	2109.98	112.83	1870.00	2131.88	114.00
13. HPCL, Visakh	682.00	832.19	122.02	685.00	771.61	112.64	2069.00	2411.17	116.54	2077.00	2361.49	113.70
Total HPCL	1299.00	1507.14	116.02	1301.00	1476.84	113.52	3939.00	4521.16	114.78	3947.00	4493.37	113.84
14. CPCL, Manali	863.00	875.58	101.46	863.00	915.28	106.06	2618.00	2509.05	95.84	2618.00	2462.59	94.06
15. CPCL, CBR	82.00	41.45	50.54	82.00	48.61	59.28	249.00	111.46	44.76	249.00	126.34	50.74
Total CPCL	945.00	917.02	97.04	945.00	963.88	102.00	2867.00	2620.51	91.40	2867.00	2588.93	90.30
16. NRL, Numaligarh	247.00	237.57	96.18	247.00	234.04	237.57	748.00	675.81	90.35	748.00	704.51	94.19
17. MRPL, Mangalore	1233.00	1378.20	111.78	1233.00	1419.24	115.10	3740.00	3851.24	102.97	3740.00	4027.15	107.68
18. ONGC, Tatipaka	5.00	3.44	68.72	5.00	7.58	151.69	16.00	16.05	100.31	16.00	20.66	129.12
B. Joint Venture	1422.00	1650.99	116.10	1233.00	586.91	47.60	4313.00	4843.07	112.29	3740.00	2594.84	69.38
19. BORL, Bina	493.00	615.88	124.92	493.00	586.91	119.05	1496.00	1718.31	114.86	1496.00	1773.20	118.53
20. HMEL, GGSR, Bhatinda	929.00	1035.11	111.42	740.00	0.00	0.00	2817.00	3124.76	110.93	2244.00	821.64	36.61
C. Private Sector	7249.00	7516.37	103.69	6575.00	7387.44	112.36	21990.00	21990.31	100.00	19945.00	22613.29	113.38
21. RIL, Jamnagar	2712.00	2701.37	99.61	2712.00	2622.92	96.72	8227.00	8169.85	99.31	8227.00	8030.05	97.61
22. RIL, SEZ	2893.00	3091.01	106.84	2219.00	3100.85	139.74	8776.00	8576.91	97.73	6732.00	9457.01	140.48
Total RIL	5605.00	5792.38	103.34	4932.00	5723.77	116.05	17003.00	16746.76	98.49	14959.00	17487.05	116.90
23. EOL, Vadinar	1644.00	1723.99	104.87	1644.00	1663.67	101.20	4986.00	5243.55	105.17	4986.00	5126.24	102.81
TOTAL(A+B+C)	20348.00	21865.02	107.46	19233.00	20048.73	104.24	61722.00	63958.95	103.62	58339.00	60901.63	104.39

Note: Crude throughput in terms of crude oil processed. *: Provisional. **: Revised

MINISTRY OF PETROLEUM & NATURAL GAS

Production of Petroleum Products during the month of June, 2018 and cumulatively for the period April-June, 2018 vis-à-vis April-June, 2017

Annexure-V

(Para 3.4)

(Qty: '000' Tonnes)

Name of Undertaking/Unit	Planned production during the month*	Production during the			Cumulative Production			% variation over last year		% variation during the month under review over planned production
		Month under review *	Corresponding month of last year	Preceding month of current year **	(April-June)			During the month under review	Upto the end of the period	
					Planned production during current year*	Actual production during current year*	Actual production during corresponding period of last year**			
(1)	(2)	(3)	(4)	(5)	(6)	(7)	(8)	(9)	(10)	(11)
I. Refinery										
A. Public Sector	11971.59	12138.04	11489.66	11923.77	34593.88	34883.57	33650.57	5.64	3.66	1.39
1. IOC, Guwahati	54.71	90.31	45.64	103.05	228.61	297.53	248.83	97.89	19.57	65.07
2. IOC, Barauni	506.97	475.60	521.56	549.61	1538.13	1567.75	1577.62	-8.81	-0.63	-6.19
3. IOC, Gujarat	1137.12	1114.87	750.07	1134.92	3454.71	3430.49	3047.34	48.64	12.57	-1.96
4. IOC, Haldia	627.62	648.40	652.17	598.12	1849.32	1888.03	1908.54	-0.58	-1.07	3.31
5. IOC, Mathura	784.64	829.28	823.92	831.79	2388.52	2481.63	2400.36	0.65	3.39	5.69
6. IOC, Digboi	53.52	56.91	47.06	59.94	162.04	173.32	156.80	20.93	10.54	6.33
7. IOC, Panipat	1359.79	1387.75	1306.35	1395.08	4087.44	4134.03	3955.09	6.23	4.52	2.06
8. IOC, Bongaigaon	165.85	187.52	176.69	184.41	499.14	529.26	456.12	6.13	16.03	13.06
9. IOC, Paradip	1134.90	1121.75	1139.28	1143.16	2513.53	2450.19	2970.93	-1.54	-17.53	-1.16
Total IOC	5825.11	5912.40	5462.73	6000.09	16721.44	16952.22	16721.63	8.23	1.38	1.50
10. BPCL, Mumbai	1136.92	1225.67	1114.79	1180.07	3262.49	3609.69	2979.10	9.95	21.17	7.81
11. BPCL, Kochi	1296.42	1283.75	1094.42	1226.29	3654.68	3670.78	3135.93	17.30	17.06	-0.98
Total BPCL	2433.34	2509.43	2209.21	2406.36	6917.17	7280.47	6115.03	13.59	19.06	3.13
12. HPCL, Mumbai	665.15	640.97	670.70	655.27	2012.16	1955.75	1971.07	-4.43	-0.78	-3.64
13. HPCL, Visakh	738.40	735.40	693.79	762.18	2239.84	2236.44	2167.24	6.00	3.19	-0.41
Total HPCL	1403.55	1376.37	1364.49	1417.44	4252.00	4192.19	4138.30	0.87	1.30	-1.94
14. CPCL, Manali	814.59	809.73	852.20	724.22	2368.28	2243.92	2217.79	-4.98	1.18	-0.60
15. CPCL, CBR	37.95	41.39	48.81	34.74	113.85	111.50	127.31	-15.20	-12.42	9.07
Total CPCL	852.54	851.12	901.02	758.96	2482.13	2355.42	2345.10	-5.54	0.44	-0.17
16. NRL, Numaligarh	228.71	226.29	254.44	215.23	693.75	662.58	742.61	-11.06	-10.78	-1.06
17. MRPL, Mangalore	1225.66	1259.32	1290.65	1119.95	3514.87	3425.25	3568.09	-2.43	-4.00	2.75
18. ONGC, Tatipaka	2.68	3.11	7.13	5.73	12.53	15.44	19.80	-56.30	-22.02	16.20
B. Joint Venture	1382.97	1528.85	567.41	1599.50	4094.84	4503.18	2414.53	169.44	86.50	10.55
19. BORL, Bina	539.07	563.84	565.29	584.10	1531.14	1555.99	1659.06	-0.26	-6.21	4.60
20. HMEL, GGSR, Bhatinda^	843.90	965.00	2.12	1015.40	2563.70	2947.18	755.47	-	290.11	14.35
C. Private Sector	7866.88	8598.14	7791.35	8376.89	23934.49	24565.47	23987.97	10.36	2.41	9.30
21. RIL, Jamnagar	2682.66	2960.51	2682.66	2844.76	8111.45	8629.50	8111.45	10.36	6.39	10.36
22. RIL, SEZ	3583.55	4007.21	3583.55	3825.77	11021.04	10891.13	11021.04	11.82	-1.18	11.82
Total RIL	6266.21	6967.73	6266.21	6670.53	19132.49	19520.63	19132.49	11.20	2.03	11.20
23. EOL, Vadinar	1600.67	1630.42	1525.14	1706.37	4802.00	5044.84	4855.48	6.90	3.90	1.86
TOTAL(A+B+C)	21221.44	22265.03	19848.41	21900.16	62623.21	63952.21	60053.07	12.18	6.49	4.92
II. Fractionators										
ONGC	262.14	290.17	265.59	279.91	784.40	840.37	753.92	9.25	11.47	10.69
OIL	1.06	1.43	1.55	3.33	7.50	7.90	5.30	-7.74	49.09	35.55
GAIL	106.40	97.45	110.24	99.94	287.30	309.85	293.92	-11.61	5.42	-8.41
D. Total Fractionators	369.60	389.04	377.38	383.18	1079.20	1158.12	1053.14	3.09	9.97	5.26
Grand Total (A+B+C+D)	21591.03	22654.07	20,225.80	22283.34	63702.41	65110.33	61106.21	12.01	6.55	4.92

Note: Totals may not tally due to rounding off figures.

*: Provisional. **: Revised