

Government of India
Ministry of Petroleum and Natural Gas
Economic & Statistics Division

New Delhi
Dated the 21st July, 2017

Monthly Production Report
June, 2017

Crude Oil

1. Crude oil production¹ during June, 2017 was 2984.50 TMT which is 2.13% lower than target but 0.60% higher when compared with June 2016. Cumulative crude oil production during April-June, 2017 was 9022.37 TMT which is 1.49% lower than target for the period but 0.24% higher than production during corresponding period of last year. Unit-wise and state-wise crude oil production is given at Annexure-I. Unit-wise crude oil production for the month of June, 2017 and cumulatively for the period April-June, 2017 vis-à-vis same period of last year has been shown in Table-1 and month-wise in Figure-1.

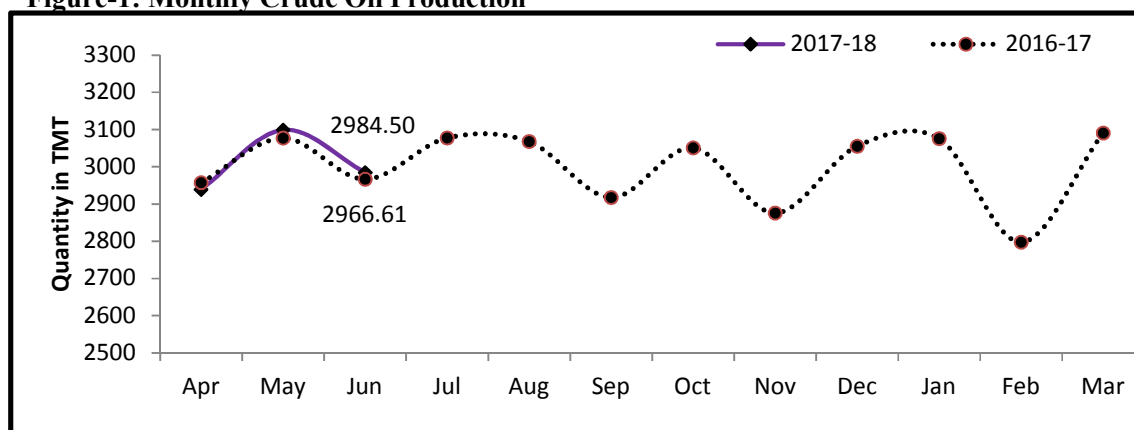
Table-1: Crude Oil Production (in TMT)

Oil Company	Target	June (Month)				April-June (Cumulative)			
	2017-18 (Apr-Mar)	2017-18		2016-17	% over last year	2017-18		2016-17	% over last year
		Target	Prod.*	Prod.		Target	Prod.*	Prod.	
ONGC	23071.00	1891.49	1859.48	1803.06	103.13	5652.99	5640.77	5492.14	102.71
OIL	3734.00	284.47	278.71	265.37	105.03	856.22	839.86	798.18	105.22
PSC Fields	10562.00	873.55	846.32	898.19	94.22	2649.78	2541.74	2710.69	93.77
Total	37367.00	3049.51	2984.50	2966.61	100.60	9158.99	9022.37	9001.01	100.24

Note: Totals may not tally due to rounding off.

*: Provisional

Figure-1: Monthly Crude Oil Production



¹Including condensate

Unit-wise production details with reasons for shortfall have been given in following sub-sections:

1.1 Crude oil production by ONGC during June, 2017 was 1859.48 TMT which is 1.69% lower than the monthly target but 3.13% higher when compared with June, 2016. Cumulative crude oil production by ONGC during April-June, 2017 was 5640.77 TMT which is 0.22% lower than target for the period but 2.71% higher than production during corresponding period of last year. Reasons for shortfall in production are as under:

- Offshore: Natural decline/increase in water cut from matured fields of Western Offshore and repair job of sub-sea lines.
- Onshore: GEB power shutdowns / electrical faults due to heavy rain / flood in Mehsana and pressure decline & increase in water cut in Gandhar field affected Ankleshwar production

1.2 Crude oil production by OIL during June, 2017 was 278.71 TMT which is 2.03% lower than monthly target but 5.03% higher than production in June, 2016. Cumulative crude oil production by OIL during April-June, 2017 was 839.86 TMT which is 1.91% lower than target for the period but 5.22% higher than production during corresponding period of last year. Reasons for shortfall in production are as under:

- Less than planned achievement due to higher decline in production potential of wells mainly in Greater Hapjan and Greater Chandmari areas.
- Less than planned contribution from work over wells.

1.3 Crude oil production by Pvt/JVs during June, 2017 was 846.32 TMT which is 3.12% lower than the monthly target and 5.78% lower than June, 2016. Cumulative crude oil production by Pvt/JVs during April-June, 2017 was 2541.74 TMT which is 4.08% lower than target for the period and 6.23% lower than the production during corresponding period of last year. Reasons for shortfall in production are as under:

- RJ-ON-90/1 (CIL): Around 100 wells are closed either due to high water cut or require WOJ and poor reservoir performance of Bhagyam. Power fluid pumps maintenance job ongoing in Mangala.
- Panna-Mukta (BG): Closure of certain wells in June 2017 owing to well integrity issues and natural decline.
- CY-ONN-2002/2 (ONGC): Test production from 5 oil wells. PML not yet granted.
- CB-ONN-2004/2 (ONGC): Underperformance of wells

Natural Gas

2 Natural gas production during June, 2017 was 2755.48 MMSCM which is 2.75% lower than the target for the month but 6.05% higher when compared with June, 2016. Cumulative natural gas production during April-June, 2017 was 8057.72 MMSCM which

is 5.55% lower than target for the period but 4.04% higher than the production during corresponding period of last year. Unit-wise and state-wise natural gas production is given at Annexure-II. Unit-wise natural gas production for the month of June, 2017 and cumulatively for the period April-June, 2017 vis-à-vis same period of last year has been shown in Table-2 and month-wise in Figure-2.

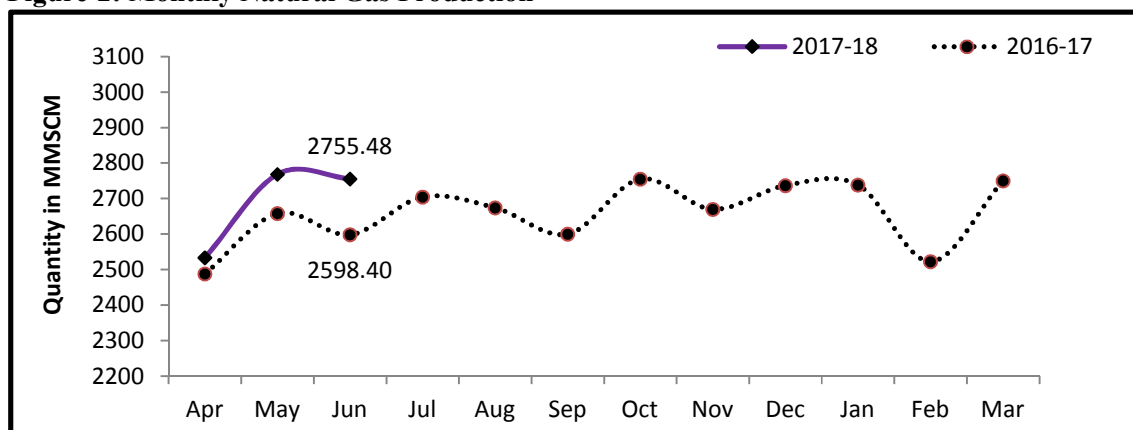
Table-2: Natural Gas Production (MMSCM)

Oil Company	Target	June (Month)				April-June (Cumulative)			
	2017-18 (Apr-Mar)	2017-18		2016-17	% over last year	2017-18		2016-17	% over last year
		Target	Prod.*	Prod.		Target	Prod.*	Prod.	
ONGC	24208.00	1943.53	1974.47	1748.60	112.92	5840.95	5728.81	5172.40	110.76
OIL	3000.00	241.45	237.36	241.25	98.39	725.26	723.52	730.71	99.02
PSC Fields	8034.00	648.33	543.65	608.55	89.33	1964.71	1605.39	1841.54	87.18
Total	35242.00	2833.32	2755.48	2598.40	106.05	8530.92	8057.72	7744.65	104.04

Note: Totals may not tally due to rounding off.

*: Provisional

Figure-2: Monthly Natural Gas Production



2.1 Natural gas production by ONGC during June, 2017 was 1974.47 MMSCM which is 1.59% higher than the monthly target and 12.92% higher when compared with June, 2016. Cumulative natural gas production by ONGC during April-June, 2017 was 5728.81 MMSCM which is 1.92% lower than the cumulative target but 10.76% higher than the production during the corresponding period of the last year.

2.2 Natural gas production by OIL during June, 2017 was 237.36 MMSCM which is 1.70% lower than the monthly target and 1.61% lower than June, 2016. Cumulative natural gas production by OIL during April-June, 2017 was 723.52 MMSCM which is 0.24% lower than the cumulative target and 0.98% lower than the production during the corresponding period of last year. The major reason for shortfall in production was unplanned shutdown in BVFCL, Namrup Plant –Unit-III.

2.3 Natural gas production by Pvt/JVs during June, 2017 was 543.65 MMSCM which is 16.15% lower than the monthly target and 10.67% lower when compared with June, 2016.

Cumulative natural gas production by Pvt/JVs during April-June, 2017 was 1605.39 MMSCM which is 18.29% lower than the cumulative target and 12.82% lower than the production during the corresponding period of last year. Reasons for shortfall in production are as under:

- Sohagpur West (RIL): Underperformance of CBM wells. Production restrained due to maximum CBM intake limited by IFFCO to 1,80,000 SCMD at GAIL's Phulpur terminal
- Raniganj East (Essar): Few wells closed for planned maintenance and refrac jobs
- AAP-ON-94/1 (HOEC): Production deferred due to delay in grant of PML.
- Closure of 2 wells in D1D3 field and 1 well in MA field in KG-DWN-98/3 (RIL).
- RJ-ON-90/1 (CIL): Around 100 wells are closed either due to high water cut or require WOJ and poor reservoir performance of Bhagyam. Power fluid pumps maintenance job ongoing in Mangala.
- Panna-Mukta (BG): Closure of certain wells owing to well integrity.

3. Refinery Production (in terms of crude oil processed)

Refinery production during June, 2017 was 20057.80 TMT which is 0.11% higher than the target for the month but 0.54% lower when compared with June, 2016. Cumulative production during April-June, 2017 was 60898.38 TMT which is 3.19% higher than the target for the period and 1.04% higher than the production during corresponding period of last year. Unit-wise production is given at Annexure-III. Company-wise production for the month of June, 2017 and cumulatively for the period April-June, 2017 vis-à-vis same period of last year has been shown in Table-3 and month-wise in Figure-3.

Figure 3: Monthly Refinery Production

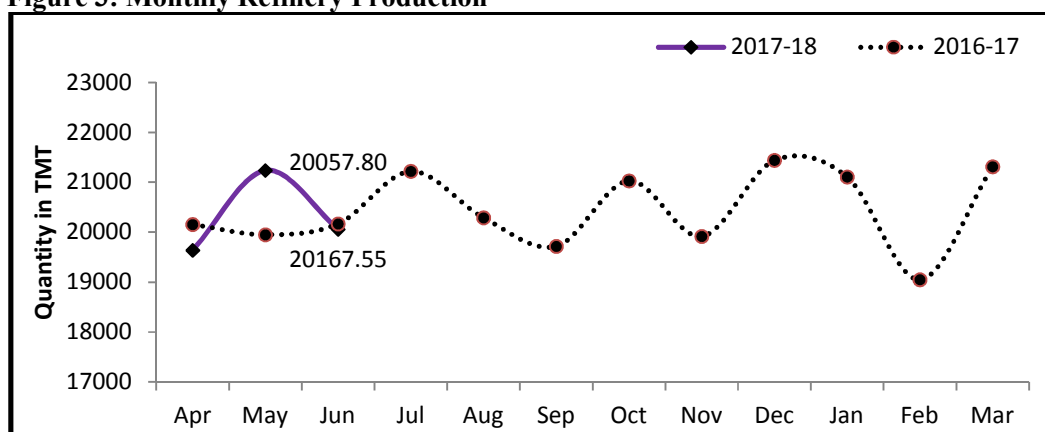


Table 3: Refinery Production (TMT)

Oil Company	Target	June (Month)				April-June (Cumulative)			
	2017-18 (Apr-Mar)	2017-18		2016-17	% over last year	2017-18		2016-17	% over last year
		Target	Prod.*	Prod.		Target	Prod.*	Prod.	
CPSE	139090	11493.28	12083.45	11095.09	108.91	34466.45	35690.25	33802.66	105.58
IOCL	65750	5405.00	5729.44	5183.04	110.54	16741.00	17520.83	16097.65	108.84
BPCL	27000	2200.00	2243.35	2059.72	108.92	6200.00	6338.05	6202.41	102.19
HPCL	17309	1449.76	1486.17	1422.76	104.46	4296.56	4490.39	4479.04	100.25
CPCL	10300	866.10	963.88	915.08	105.33	2574.66	2588.93	2642.64	97.97
NRL	2670	219.529	234.037	232.812	100.53	665.71	704.51	687.68	102.45
MRPL	16000	1350.000	1419.243	1273.915	111.41	3975.00	4027.15	3672.27	109.66
ONGC	62	2.891	7.327	7.762	94.40	13.52	20.39	20.97	97.25
JVs	15201	922.000	586.906	1410.598	41.61	2686.00	2594.84	4426.05	58.63
BORL	6000	525.00	586.91	532.28	110.26	1575.00	1773.20	1682.37	105.40
HMEL	9201	397.00	0.00	878.32	0.00	1111.00	821.64	2743.67	29.95
Private	90480	7619.62	7387.44	7661.85	96.42	21860.66	22613.29	22044.58	102.58
RIL	70174	5941.75	5723.77	5941.75	96.33	16827.06	17487.05	16827.064	103.92
EOL	20306	1677.87	1663.67	1720.10	96.72	5033.6	5126.238	5217.512	98.25
TOTAL	244771	20034.90	20057.80	20167.55	99.46	59013.11	60898.38	60273.29	101.04

Note: 1 HMEL Refinery undergone major turnaround during Apr-Jun, 2017

*: Provisional

2. Totals may not tally due to rounding off.

3.1 CPSE Refineries' production during June, 2017 was 12083.45 TMT which is 5.13% higher than the target for the month and 8.91% higher than the production achieved in the corresponding month of last year. Cumulative production by CPSE refineries during April-June, 2017 was 35690.26 TMT which is 3.55% higher than the target for the period and 5.58% higher than the production during corresponding period of last year. Reasons for shortfall of refinery production in some CPSE refineries are as under:

- IOCL, Guwahati: Lower due to deferment shutdown of HGU, HDT & MSQ from Apr'17 to June'17.
- IOCL, Barauni: Lower due to BS- IV switchover (naphtha Containment).
- IOCL, Panipat: Marginally lower than plan due to high SRGO stocks
- IOCL, Gujarat: Lower Due to M&I shutdown of AU-1/AU-2/AU-4.
- IOCL, Haldia: Lower due to OHCU BLE issue.
- IOCL, Bongaigaon: Lower due to CDU-1 Idling due to low Crude Stock and High DHDT ISD due to HGU and DHDT S/D.
- BPCL, Mumbai: Lower due to planned shutdown of CDU3, NHGU and Hydrocracker unit for Turnaround and revamp.
- HPCL, Visakh: Lower due to unplanned shutdown of primary units.
- CPCL, Manali & CBR: Lower than target due to CDU-3/HGU shutdown (equipment problem) in Apr'17.

- 3.2 Production in JV refineries during June, 2017 was 586.91 TMT which is 36.34% lower than the target for the month and 58.39% lower than the production achieved in the corresponding month of last year. Cumulative production by JVs refineries during April-June, 2017 was 2594.84 TMT which is 3.39% lower than the target for the period and 41.37% lower than the production during corresponding period of last year. The major reason for shortfall in production was major turnaround underway in HMEL refinery during April - June, 2017.
- 3.3 Production in private refineries during June, 2017 was 7387.44 TMT which is 3.05% lower than the target for the month and 3.58% lower when compared with June, 2016. Cumulative production by private refineries during April-June, 2017 was 22613.29 TMT which is 3.44% higher than the target for the period and 2.58% higher than the production during corresponding period of last year.
- 3.4 Refinery-wise details of the capacity utilization and production of petroleum products during the month of June, 2017 and cumulatively for the period April-June, 2017 vis-à-vis April-June, 2016 are given at Annexures - IV and V respectively.

MINISTRY OF PETROLEUM & NATURAL GAS

Annexure-I

Crude Oil Production during the month of June, 2017 and cumulatively for the period April-June, 2017 vis-à-vis April-June, 2016

(Para 1)

(Qty: '000' Tonnes)

Name of Undertaking/Unit/State	Planned production during the month	Production during the			Cumulative Production			% variation over last year		% variation during the month under review over planned production
		Month under review *	Corresponding month of last year **	Preceding month of current year **	(April-June)			During the month under review	Upto the end of the period	
					Planned production during current year	Actual production during current year *	Actual production during corresponding period of last year **			
(1)	(2)	(3)	(4)	(5)	(6)	(7)	(8)	(9)	(10)	(11)
1. ONGC	1891.489	1859.480	1803.061	1934.170	5652.989	5640.769	5492.142	3.13	2.71	-1.69
Onshore	497.689	493.768	476.508	513.017	1489.133	1505.359	1450.576	3.62	3.78	-0.79
Andhra Pradesh	25.505	26.063	20.561	28.080	72.915	83.098	63.241	26.76	31.40	2.19
Assam ^	81.417	81.335	76.285	83.812	249.768	245.175	231.973	6.62	5.69	-0.10
Gujarat	369.307	364.177	360.542	380.149	1107.443	1112.922	1097.048	1.01	1.45	-1.39
Tamil Nadu	21.461	22.193	19.120	20.976	59.008	64.164	58.314	16.07	10.03	3.41
Offshore	1393.800	1365.712	1326.553	1421.153	4163.856	4135.410	4041.566	2.95	2.32	-2.02
Eastern Offshore	6.446	0.642	1.163	0.705	19.899	2.125	3.893	-44.80	-45.41	-90.04
Western Offshore	1253.600	1245.486	1216.376	1302.471	3754.368	3788.120	3705.158	2.39	2.24	-0.65
Condensates	133.754	119.584	109.014	117.977	389.589	345.165	332.515	9.70	3.80	-10.59
2. OIL (Onshore)	284.474	278.707	265.367	287.912	856.223	839.855	798.178	5.03	5.22	-2.03
Assam	283.910	278.089	264.736	287.271	854.471	837.974	796.239	5.04	5.24	-2.05
Arunachal Pradesh	0.564	0.618	0.631	0.641	1.752	1.881	1.939	-2.06	-2.99	9.57
3. DGH (Private / JVC)	873.546	846.315	898.186	876.977	2649.781	2541.744	2710.691	-5.78	-6.23	-3.12
Onshore	725.082	676.861	708.167	700.784	2199.439	2054.413	2144.659	-4.42	-4.21	-6.65
Arunachal Pradesh	4.277	3.657	3.918	3.798	12.973	11.231	11.806	-6.66	-4.87	-14.49
Assam	0.828	0.000	0.000	0.000	2.512	0.000	0.000	0.00	0.00	0.00
Gujarat	16.048	10.906	11.556	11.606	48.711	33.206	34.691	-5.62	-4.28	-32.04
Rajasthan	693.595	655.104	691.050	677.993	2103.896	1989.389	2094.066	-5.20	-5.00	-5.55
Tamil Nadu	10.334	7.194	1.643	7.387	31.347	20.587	4.096	337.86	402.61	-30.39
Offshore	148.464	169.454	190.019	176.193	450.342	487.331	566.032	-10.82	-13.90	14.14
Eastern Offshore	65.347	75.995	80.957	78.768	198.221	225.639	247.023	-6.13	-8.66	16.29
Gujarat Offshore	24.880	32.111	33.071	32.303	75.469	91.409	101.125	-2.90	-9.61	29.07
Western Offshore	58.237	61.348	75.991	65.122	176.652	170.283	217.884	-19.27	-21.85	5.34
GRAND TOTAL (1+2+3)	3049.509	2984.502	2966.614	3099.059	9158.993	9022.368	9001.011	0.60	0.24	-2.13
Onshore	1507.245	1449.336	1450.042	1501.713	4544.795	4543.706	4393.413	-0.05	3.42	-3.84
Offshore	1542.264	1535.166	1516.572	1597.346	4614.198	4614.199	4607.598	1.23	0.14	-0.46

Note: Totals may not tally due to rounding off figures.

^: Includes crude oil production of Tripura

*: Provisional. **: Revised

Reasons for shortfall are indicated in the note.

MINISTRY OF PETROLEUM & NATURAL GAS

Annexure-II

Natural Gas Production during the month of June, 2017 and cumulatively for the period April-June, 2017 vis-à-vis April-June, 2016

(Para 2)

(Qty: Million Cubic Meters)

Name of Undertaking/Unit/State	Planned production during the month	Production during the			Cumulative Production (April-June)			% variation over last year		% variation during the month under review over planned production
		Month under review *	Corresponding month of last year **	Preceding month of current year **	Planned production during current year	Actual production during current year *	Actual production during corresponding period of last year **	During the month under review	Upto the end of the period	
(1)	(2)	(3)	(4)	(5)	(6)	(7)	(8)	(9)	(10)	(11)
1. ONGC	1943.535	1974.473	1748.600	1963.360	5840.954	5728.812	5172.403	12.92	10.76	1.59
Onshore	449.474	465.705	396.861	475.477	1365.528	1404.315	1187.539	17.35	18.25	3.61
Andhra Pradesh	76.729	70.905	68.318	72.900	235.634	215.962	181.017	3.79	19.30	-7.59
Assam	35.949	41.569	37.328	41.310	107.750	123.140	108.520	11.36	13.47	15.63
Gujarat	115.859	133.116	99.611	137.771	350.970	404.464	322.932	33.64	25.25	14.90
Rajasthan	0.411	0.319	0.530	0.493	1.246	0.973	1.014	-39.81	-4.04	-22.29
Tamil Nadu	94.812	98.642	74.423	92.422	291.303	286.882	236.539	32.54	21.28	4.04
Tripura	125.716	121.154	116.651	130.581	378.627	372.894	337.517	3.86	10.48	-3.63
Offshore	1494.060	1508.768	1351.739	1487.883	4475.426	4324.497	3984.864	11.62	8.52	0.98
Eastern Offshore	48.819	48.988	29.155	51.830	150.017	152.882	41.414	68.03	269.16	0.35
Western Offshore	1445.241	1459.780	1322.584	1436.053	4325.409	4171.615	3943.450	10.37	5.79	1.01
2. OIL	241.449	237.355	241.247	244.888	725.259	723.522	730.712	-1.61	-0.98	-1.70
Assam	223.961	219.228	219.779	225.883	672.212	667.783	664.908	-0.25	0.43	-2.11
Arunachal Pradesh	1.050	0.955	0.984	0.987	3.185	2.914	2.977	-2.95	-2.12	-9.05
Rajasthan	16.438	17.172	20.484	18.018	49.862	52.825	62.827	-16.17	-15.92	4.47
3. DGH (Private / JVC)	648.331	543.648	608.554	560.354	1964.710	1605.389	1841.536	-10.67	-12.82	-16.15
Onshore	121.005	112.117	100.300	108.188	367.116	329.167	315.316	11.78	4.39	-7.34
Arunachal Pradesh	18.740	1.282	1.215	1.368	56.844	4.009	3.632	5.51	10.38	-93.16
Assam	0.707	0.000	0.000	0.000	2.078	0.000	0.000	-	-	-
Gujarat	6.222	6.764	7.733	6.963	19.010	20.384	23.996	-12.53	-15.05	8.71
Rajasthan	94.015	102.944	91.189	98.879	285.179	301.851	287.287	12.89	5.07	9.50
Tamil Nadu	1.321	1.127	0.163	0.978	4.006	2.923	0.401	591.41	628.93	-14.66
CBM	104.688	50.219	43.669	48.470	317.024	144.952	123.554	15.00	17.32	-52.03
Jharkhand (CBM)	0.295	0.329	0.197	0.376	0.895	1.039	0.604	67.01	72.02	11.53
Madhya Pradesh (CBM)	38.630	4.183	0.422	1.947	117.178	8.593	1.151	891.23	646.57	-89.17
West Bengal (CBM)	65.763	45.707	43.050	46.147	198.951	135.320	121.799	6.17	11.10	-30.50
Offshore	422.638	381.312	464.585	403.696	1280.569	1131.270	1402.666	-17.92	-19.35	-9.78
Eastern Offshore	269.298	208.675	281.998	228.145	816.872	665.605	876.943	-26.00	-24.10	-22.51
Gujarat Offshore	4.391	9.042	6.884	7.166	11.886	21.264	19.916	31.35	6.77	105.92
Western Offshore	148.949	163.595	175.703	168.385	451.811	444.401	505.807	-6.89	-12.14	9.83
TOTAL (1+2+3)	2833.315	2755.476	2598.401	2768.602	8530.923	8057.723	7744.651	6.05	4.04	-2.75
CBM	104.688	50.219	43.669	48.470	317.024	144.952	123.554	15.00	17.32	-52.03
Onshore	811.928	815.177	738.408	828.553	2457.904	2457.004	2233.567	10.40	10.00	0.40
Offshore	1916.699	1890.080	1816.324	1891.579	5755.995	5455.767	5387.530	4.06	1.27	-1.39

Note: Totals may not tally due to rounding off figures.

*: Provisional.

** : Revised

CBM: Coal Bed Methane production.

Reasons for shortfall are indicated in the note.

MINISTRY OF PETROLEUM & NATURAL GAS

Annexure-III

Refinery Production (in terms of crude oil processed) during the month of June, 2017 and cumulatively for the period April-June, 2017 vis-à-vis April-June, 2016

(Para 3)

(Qty: '000' Tonnes)

Name of Undertaking/Unit	Planned production during the month	Production during the			Cumulative Production			% variation over last year		% variation during the month under review over planned production
		Month under review *	Corresponding month of last year	Preceding month of current year **	(April-June)			During the month under	Upto the end of the period	
					Planned production during current year	Actual production during current year *	Actual production during corresponding period of last year **			
(1)	(2)	(3)	(4)	(5)	(6)	(7)	(8)	(9)	(10)	(11)
A. Public Sector	11493.280	12083.452	11095.094	12453.043	34466.450	35690.255	33802.662	8.91	5.58	5.13
1. IOC, Guwahati	75.000	64.178	67.746	86.457	222.000	238.226	216.008	-5.27	10.29	-14.43
2. IOC, Barauni	530.000	550.125	547.059	533.297	1605.000	1641.700	1682.988	0.56	-2.45	3.80
3. IOC, Gujarat	680.000	784.532	1233.471	1168.872	2710.000	3078.609	3688.745	-36.40	-16.54	15.37
4. IOC, Haldia	675.000	673.284	681.656	707.317	2050.000	2039.232	2087.176	-1.23	-2.30	-0.25
5. IOC, Mathura	775.000	826.099	796.809	825.283	2350.000	2447.455	2408.038	3.68	1.64	6.59
6. IOC, Digboi	40.000	52.494	43.155	54.473	124.000	160.102	140.776	21.64	13.73	31.24
7. IOC, Panipat	1315.000	1310.351	1356.587	1402.066	3990.000	4038.735	4058.595	-3.41	-0.49	-0.35
8. IOC, Bongaigaon	205.000	201.569	199.569	174.305	580.000	576.469	625.797	1.00	-7.88	-1.67
9. IOC, Paradip	1110.000	1266.806	256.992	1307.014	3110.000	3300.306	1189.530	-	-	14.13
Total IOC	5405.000	5729.438	5183.044	6259.084	16741.000	17520.834	16097.653	10.54	8.84	6.00
10. BPCL, Mumbai	1100.000	1110.399	1163.181	1017.867	3010.000	3084.744	3478.051	-4.54	-11.31	0.95
11. BPCL, Kochi	1100.000	1132.954	896.535	1105.938	3190.000	3253.304	2724.357	26.37	19.42	3.00
Total BPCL	2200.000	2243.353	2059.716	2123.805	6200.000	6338.048	6202.408	8.92	2.19	1.97
12. HPCL, Mumbai	657.015	705.231	624.957	719.811	1993.988	2131.876	2062.412	12.84	3.37	7.34
13. HPCL, Visakh	792.750	780.939	797.805	834.265	2302.575	2358.510	2416.630	-2.11	-2.41	-1.49
Total HPCL	1449.765	1486.170	1422.762	1554.076	4296.563	4490.386	4479.042	4.46	0.25	2.51
14. CPCL, Manali	825.000	915.277	881.596	862.548	2450.000	2462.593	2503.851	3.82	-1.65	10.94
15. CPCL, CBR	41.096	48.607	33.487	41.588	124.658	126.339	138.788	45.15	-8.97	18.28
Total CPCL	866.096	963.884	915.083	904.136	2574.658	2588.932	2642.639	5.33	-2.03	11.29
16. NRL, Numaligarh	219.529	234.037	232.812	239.577	665.709	704.511	687.682	0.53	2.45	6.61
17. MRPL, Mangalore	1350.000	1419.243	1273.915	1365.164	3975.000	4027.152	3672.271	11.41	9.66	5.13
18. ONGC, Tatipaka	2.891	7.327	7.762	7.201	13.520	20.392	20.968	-5.60	-2.75	153.49
B. Joint Venture	922.000	586.906	1410.598	635.489	2686.000	2594.837	4426.048	-58.39	-41.37	-36.34
19. BORL, Bina	525.000	586.906	532.283	635.489	1575.000	1773.198	1682.374	10.26	5.40	11.79
20. HMEL, GGSR, Bhatinda	397.000	0.000	878.315	0.000	1111.000	821.639	2743.674	-100.00	-70.05	0.00
C. Private Sector	7619.619	7387.440	7661.853	7738.195	21860.664	22613.291	22044.576	-3.58	2.58	-3.05
21. RIL, Jamnagar	2726.505	2622.915	2726.505	2741.825	8314.782	8030.046	8314.782	-3.80	-3.42	-3.80
22. RIL, SEZ	3215.248	3100.852	3215.248	3221.316	8512.282	9457.007	8512.282	-3.56	11.10	-3.56
Total RIL	5941.753	5723.767	5941.753	5963.141	16827.064	17487.053	16827.064	-3.67	3.92	-3.67
23. EOL, Vadinar	1677.867	1663.673	1720.100	1775.054	5033.600	5126.238	5217.512	-3.28	-1.75	-0.85
TOTAL(A+B+C)	20034.899	20057.798	20167.545	20826.727	59013.114	60898.382	60273.286	-0.54	1.04	0.11

Note: Totals may not tally due to rounding off figures. *: Provisional. **: Revised

Reasons for shortfall are indicated in the note.

MINISTRY OF PETROLEUM & NATURAL GAS

Annexure-IV

Refinery-wise Capacity Utilisation during the month of June, 2017 and cumulatively for the period April-June, 2017 vis-à-vis April-June, 2016

(Para 3.4)

(Qty: '000' Tonnes)

Name of Undertaking/Unit	June, 2017			June, 2016			Cumulative (April - June)					
	Prorated Installed Capacity	Actual Crude T'put *	% Utilisation of Installed Capacity	Prorated Installed Capacity	Actual Crude T'put	% Utilisation of Installed Capacity	2017-18			2016-17		
							Prorated Installed Capacity	Actual Crude T'put *	% Utilisation of Installed Capacity	Prorated Installed Capacity	Actual Crude T'put **	% Utilisation of Installed Capacity
(1)	(2)	(3)	(4)	(5)	(6)	(7)	(8)	(9)	(10)	(11)	(12)	(13)
A. Public Sector	11424.00	12083.45	105.77	11071.00	11095.09	100.22	34654.00	35690.25	102.99	33674.00	33802.66	100.38
1. IOC, Guwahati	82.00	64.18	78.27	82.00	67.75	82.62	249.00	238.23	95.67	249.00	216.01	86.75
2. IOC, Barauni	493.00	550.13	111.59	492.00	547.06	111.19	1496.00	1641.70	109.74	1496.00	1682.99	112.50
3. IOC, Gujarat	1126.00	784.53	69.67	1123.00	1233.47	109.84	3416.00	3078.61	90.12	3416.00	3688.75	107.98
4. IOC, Haldia	616.00	673.28	109.30	615.00	681.66	110.84	1870.00	2039.23	109.05	1870.00	2087.18	111.61
5. IOC, Mathura	658.00	826.10	125.55	656.00	796.81	121.46	1995.00	2447.46	122.68	1995.00	2408.04	120.70
6. IOC, Digboi	53.00	52.49	99.05	53.00	43.16	81.42	162.00	160.10	98.83	162.00	140.78	86.90
7. IOC, Panipat	1233.00	1310.35	106.27	1230.00	1356.59	110.29	3740.00	4038.74	107.99	3740.00	4058.60	108.52
8. IOC, Bongaigaon	193.00	201.57	104.44	193.00	199.57	103.40	586.00	576.47	98.37	586.00	625.80	106.79
9. IOC, Paradip	1233.00	1266.81	102.74	1230.00	256.99	0.00	3740.00	3300.31	88.24	3740.00	1189.53	0.00
Total IOC	5688.00	5729.44	100.73	5672.00	5183.04	91.38	17253.00	17520.83	101.55	17253.00	16097.65	93.30
10. BPCL, Mumbai	986.00	1110.40	112.62	984.00	1163.18	118.21	2992.00	3084.74	103.10	2992.00	3478.05	116.25
11. BPCL, Kochi	1019.00	1132.95	111.18	779.00	896.54	115.09	3092.00	3253.30	105.22	2368.00	2724.36	115.05
Total BPCL	2005.00	2243.35	111.89	1762.00	2059.72	116.90	6083.00	6338.05	104.19	5360.00	6202.41	115.72
12. HPCL, Mumbai	616.00	705.23	114.49	533.00	624.96	117.25	1870.00	2131.88	114.00	1621.00	2062.41	127.23
13. HPCL, Visakh	685.00	780.94	114.01	680.00	797.81	117.32	2077.00	2358.51	113.55	2069.00	2416.63	116.80
Total HPCL	1301.00	1486.17	114.23	1213.00	1422.76	117.29	3947.00	4490.39	113.77	3690.00	4479.04	121.38
14. CPCL, Manali	863.00	915.28	106.06	861.00	881.60	102.39	2618.00	2462.59	94.06	2618.00	2503.85	95.64
15. CPCL, CBR	82.00	48.61	59.28	82.00	33.49	40.84	249.00	126.34	50.74	249.00	138.79	55.74
Total CPCL	945.00	963.88	102.00	943.00	915.08	97.04	2867.00	2588.93	90.30	2867.00	2642.64	92.17
16. NRL, Numaligarh	247.00	234.04	94.75	246.00	232.81	94.64	748.00	704.51	94.19	748.00	687.68	91.94
17. MRPL, Mangalore	1233.00	1419.24	115.10	1230.00	1273.92	103.57	3740.00	4027.15	107.68	3740.00	3672.27	98.19
18. ONGC, Tatipaka	5.00	7.33	146.54	5.00	7.76	155.24	16.00	20.39	127.45	16.00	20.97	131.05
B. Joint Venture	1233.00	586.91	47.60	1230.00	1410.60	114.68	3740.00	2594.84	69.38	3740.00	4426.05	118.34
19. BORL, Bina	493.00	586.91	119.05	492.00	532.28	108.19	1496.00	1773.20	118.53	1496.00	1682.37	112.46
20. HMEL, GGSR, Bhatinda	740.00	0.00	0.00	738.00	878.32	119.01	2244.00	821.64	36.61	2244.00	2743.67	122.27
C. Private Sector	6575.00	7387.44	112.36	6557.00	7661.85	116.85	19945.00	22613.29	113.38	19945.00	22044.58	110.53
21. RIL, Jamnagar	2712.00	2622.92	96.72	2705.00	2726.51	100.80	8227.00	8030.05	97.61	8227.00	8314.78	101.07
22. RIL, SEZ	2219.00	3100.85	139.74	2213.00	3215.25	145.29	6732.00	9457.01	140.48	6732.00	8512.28	126.45
Total RIL	4932.00	5723.77	116.05	4918.00	5941.75	120.82	14959.00	17487.05	116.90	14959.00	16827.06	112.49
23. EOL, Vadinar	1644.00	1663.67	101.20	1639.00	1720.10	104.95	4986.00	5126.24	102.81	4986.00	5217.51	104.64
TOTAL(A+B+C)	19233.00	20057.80	104.29	18858.00	20167.55	106.94	58339.00	60898.38	104.39	57359.00	60273.29	105.08

*: Provisional. **:Revised

MINISTRY OF PETROLEUM & NATURAL GAS

Production of Petroleum Products during the month of June, 2017 and cumulatively for the period April-June, 2017 vis-à-vis April-June, 2016

Annexure-V

(Para 3.4)

(Qty: '000' Tonnes)

Name of Undertaking/Unit	Planned production during the month	Production during the			Cumulative Production			% variation over last year		% variation during the month under review over planned production
		Month under review *	Corresponding month of last year	Preceding month of current year **	(April-June)			During the month under review	Upto the end of the period	
					Planned production during current year	Actual production during current year*	Actual production during corresponding period of last year**			
(1)	(2)	(3)	(4)	(5)	(6)	(7)	(8)	(9)	(10)	(11)
I. Refinery										
A. Public Sector	10789.087	11483.708	10532.522	11769.165	32151.318	33638.622	31765.291	9.03	5.90	6.44
1. IOC, Guwahati	79.897	45.650	94.649	103.049	236.495	248.848	291.031	-51.77	-14.49	-42.86
2. IOC, Barauni	487.904	521.562	484.042	533.905	1477.521	1577.618	1523.880	7.75	3.53	6.90
3. IOC, Gujarat	646.917	750.073	1159.326	1169.486	2578.156	3047.342	3478.132	-35.30	-12.39	15.95
4. IOC, Haldia	625.652	652.166	624.805	650.893	1900.128	1908.540	1861.609	4.38	2.52	4.24
5. IOC, Mathura	751.215	823.916	789.569	813.163	2277.876	2400.361	2312.495	4.35	3.80	9.68
6. IOC, Digboi	40.320	47.057	49.312	55.057	124.992	156.797	144.562	-4.57	8.46	16.71
7. IOC, Panipat	1319.093	1300.382	1337.605	1358.747	4002.419	3940.241	4107.403	-2.78	-4.07	-1.42
8. IOC, Bongaigaon	188.448	176.689	179.604	125.671	533.171	456.121	555.786	-1.62	-17.93	-6.24
9. IOC, Paradip	934.193	1139.282	255.095	1142.817	2617.424	2970.926	1033.358	-	-	21.95
Total IOC	5073.640	5456.777	4974.007	5952.788	15748.184	16706.794	15308.256	9.71	9.14	7.55
10. BPCL, Mumbai	1052.040	1114.794	1124.250	1011.246	2869.036	2979.098	3341.384	-0.84	-10.84	5.96
11. BPCL, Kochi	1036.969	1094.415	846.361	1069.418	3015.988	3135.929	2562.793	29.31	22.36	5.54
Total BPCL	2089.009	2209.209	1970.611	2080.664	5885.024	6115.027	5904.177	12.11	3.57	5.75
12. HPCL, Mumbai	609.007	670.695	573.589	654.782	1848.847	1971.068	1892.185	16.93	4.17	10.13
13. HPCL, Visakh	731.074	693.794	747.752	802.775	2116.083	2167.236	2214.816	-7.22	-2.15	-5.10
Total HPCL	1340.080	1364.489	1321.341	1457.557	3964.930	4138.304	4107.001	3.27	0.76	1.82
14. CPCL, Manali	745.854	852.204	835.531	805.884	2214.163	2220.677	2302.816	2.00	-3.57	14.26
15. CPCL, CBR	41.295	48.814	33.607	41.979	125.262	127.311	139.086	45.25	-8.47	18.21
Total CPCL	787.150	901.018	869.138	847.863	2339.425	2347.988	2441.902	3.67	-3.85	14.47
16. NRL, Numaligarh	216.602	254.440	230.792	260.145	656.946	742.612	679.928	10.25	9.22	17.47
17. MRPL, Mangalore	1279.787	1290.649	1159.536	1163.145	3543.619	3568.094	3303.962	11.31	7.99	0.85
18. ONGC, Tatipaka	2.820	7.126	7.097	7.003	13.190	19.803	20.064	0.41	-1.30	152.70
B. Joint Venture	818.950	567.407	1324.441	588.900	2442.450	2414.529	4134.433	-57.16	-41.60	-30.72
19. BORL, Bina	474.450	565.289	477.599	593.233	1423.350	1659.055	1504.612	18.36	10.26	19.15
20. HMEL, GGSr, Bhatinda^	344.500	2.118	846.842	-4.333	1019.100	755.474	2629.821	-99.75	-71.27	-99.39
C. Private Sector	7980.519	7791.345	8066.918	8541.496	22894.841	23987.969	23114.815	-3.42	3.78	-2.37
21. RIL, Jamnagar	2885.194	2682.658	2885.195	2899.255	8342.643	8111.450	8342.645	-7.02	-2.77	-7.02
22. RIL, SEZ	3481.834	3583.552	3481.835	3956.203	9711.726	11021.040	9711.726	2.92	13.48	2.92
Total RIL	6367.028	6266.210	6367.030	6855.458	18054.368	19132.490	18054.371	-1.58	5.97	-1.58
23. EOL, Vadinar	1613.491	1525.135	1699.888	1686.038	4840.472	4855.479	5060.444	-10.28	-4.05	-5.48
TOTAL(A+B+C)	19588.557	19842.460	19923.881	20899.561	57488.609	60041.120	59014.539	-0.41	1.74	1.30
II. Fractionators										
ONGC	275.945	266.943	250.270	237.451	832.692	757.298	734.180	6.66	3.15	-3.26
OIL	0.000	1.550	1.481	0.960	4.400	5.300	7.905	4.66	-32.95	-
GAIL	80.175	110.242	81.972	99.590	243.198	293.920	255.553	34.49	15.01	37.50
D. Total Fractionators	356.120	378.735	333.723	338.001	1080.290	1056.518	997.638	13.49	5.90	6.35
Grand Total (A+B+C+D)	19944.677	20221.195	20257.604	21237.562	58568.899	61097.638	60012.177	-0.18	1.81	1.39

Note: Totals may not tally due to rounding off figures. *: Provisional. **: Revised

^: The negative production indicates that the products were consumed in meeting the fuel and other requirements for the ongoing turnaround.