

**Government of India**  
**Ministry of Petroleum and Natural Gas**  
**Economic & Statistics Division**

\*\*\*\*\*

New Delhi  
Dated the 23<sup>rd</sup> August, 2018

**Monthly Production Report**  
**July, 2018**

**1. Crude Oil**

**Crude oil production<sup>1</sup>** during July, 2018 was 2896.24 TMT which is 6.66% lower than target and 5.39% lower when compared with July, 2017. Cumulative crude oil production during April-July, 2018 was 11703.41 TMT which is 2.8% lower than target for the period and 3.16% lower than production during corresponding period of last year. Unit-wise and State-wise crude oil production is given at **Annexure-I**. Unit-wise crude oil production for the month of July, 2018 and cumulatively for the period April-July, 2018 vis-à-vis same period of last year has been shown in Table-1 and month-wise in Figure-1.

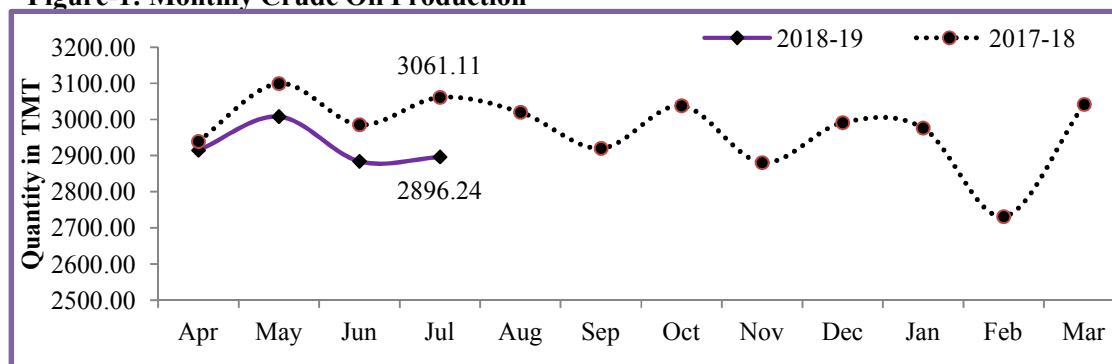
**Table-1: Crude Oil Production (in TMT)**

Oil Company	Target 2018-19 (Apr-Mar)	July (Month)				April-July (Cumulative)			
		2018-19		2017-18	% over last year	2018-19		2017-18	% over last year
		Target	Prod.*	Prod.		Target	Prod.*	Prod.	
ONGC	23040.00	1932.01	1789.09	1917.56	93.30	7434.24	7181.43	7559.26	95.00
OIL	3738.00	306.14	287.18	288.31	99.61	1176.22	1125.07	1128.77	99.67
PSC Fields	10233.60	864.63	819.97	855.24	95.88	3429.95	3396.91	3397.06	100.00
<b>Total</b>	<b>37011.60</b>	<b>3102.79</b>	<b>2896.24</b>	<b>3061.11</b>	<b>94.61</b>	<b>12040.40</b>	<b>11703.41</b>	<b>12085.09</b>	<b>96.84</b>

Note: Totals may not tally due to rounding off.

\*: Provisional

**Figure-1: Monthly Crude Oil Production**



<sup>1</sup>Including condensate

Unit-wise production details with reasons for shortfall are as under:

1.1 Crude oil production by **ONGC** during July, 2018 was 1789.09 TMT which is 7.4% lower than the monthly target and 6.7% lower when compared with July, 2017. Cumulative crude oil production by ONGC during April-July, 2018 was 7181.43 TMT which is 3.4% lower than target for the period and lower by 5.0% than production during corresponding period of last year. Reasons for shortfall are as under:

- ❖ Electric Submersible Pumps (ESP) problem in wells of NBP field (Rig deployment post monsoon).
- ❖ Increasing water- cut in Neelam and B-173 fields and less than anticipated production from some wells of Vasai East.
- ❖ Sub-sea leakage in some well fluid lines of Mumbai High & Neelam Heera Assets leading to flow restriction (Repairing/line replacement to commence post monsoon).
- ❖ Less than envisaged production from B-127 cluster.

1.2 Crude oil production by **OIL** during July, 2018 was 287.18 TMT which is 6.20% lower than monthly target and 0.39% lower when compared with July, 2017. Cumulative crude oil production by OIL during April-July, 2018 was 1125.07 TMT which is 4.35% lower than target for the period and 0.33% lower than production during the corresponding period of last year. Major reason for lower production is less than planned contribution from work over wells and drilling wells.

1.3 Crude oil production by **Pvt/JVs** during July, 2018 was 819.97 TMT which is 5.17% lower than the monthly target and 4.12% lower than July, 2017. Cumulative crude oil production by Pvt/JVs during April-July, 2018 was 3396.91 TMT which is 0.96 % lower than target for the period and at par with the production during the corresponding period of last year. Reasons for shortfall are as under:

- ❖ Panna-Mukta: Plant shutdown due to SPM integrity issue. (SHELL).
- ❖ RJ-ON-90/1: Around 55 oil wells are closed due to various reasons like high water cut, require WOJ, etc. (CEIL).

## 2. Natural Gas

**Natural gas production** during July, 2018 was 2713.52 MMSCM which is 9.73% lower than the target for the month and 5.08% lower when compared with July, 2017. Cumulative natural gas production during April-July, 2018 was 10782.35 MMSCM which is 7.69% lower than target for the period and 1.23% lower than the production during corresponding period of last year. Unit-wise and state-wise natural gas production is given at **Annexure-II**. Unit-wise natural gas production for the month of July, 2018 and cumulatively for the period April-July, 2018 vis-à-vis same period of last year has been shown in Table-2 and month-wise in Figure-2.

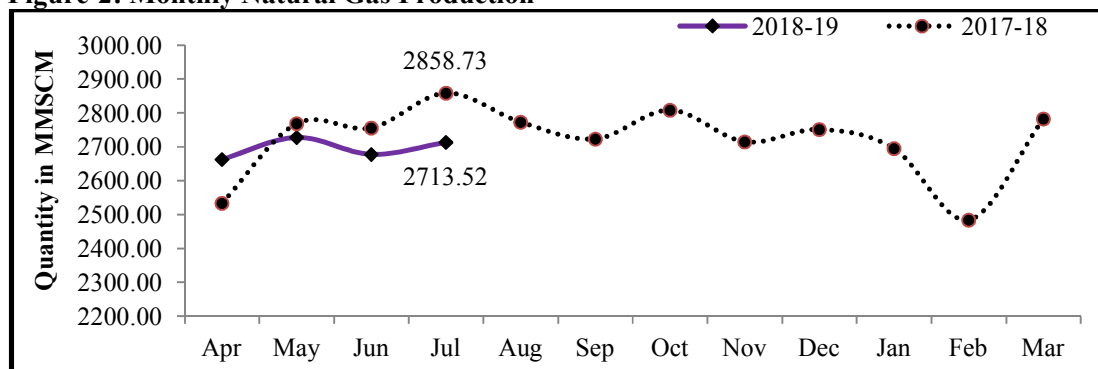
**Table-2: Natural Gas Production (MMSCM)**

Oil Comp	Target	July (Month)				April-July (Cumulative)			
	2018-19 (Apr-Mar)	2018-19		2017-18	% over last year	2018-19		2017-18	% over last year
		Target	Prod.*	Prod.		Target	Prod.*	Prod.	
ONGC	25981.00	2192.15	2044.98	2055.36	99.50	8453.41	7951.17	7784.37	102.14
OIL	3120.00	271.19	231.09	250.23	92.35	1056.25	900.44	973.75	92.47
PSC Fields	6498.11	542.73	437.45	553.15	79.08	2170.82	1930.73	2158.60	89.44
<b>Total</b>	<b>35599.11</b>	<b>3006.07</b>	<b>2713.52</b>	<b>2858.73</b>	<b>94.92</b>	<b>11680.48</b>	<b>10782.35</b>	<b>10916.72</b>	<b>98.77</b>

Note: Totals may not tally due to rounding off.

\*: Provisional

**Figure-2: Monthly Natural Gas Production**



2.1 Natural gas production by **ONGC** during July, 2018 was 2044.98 MMSCM which is 6.71% lower than the monthly target and 0.5% lower when compared with July, 2017. Cumulative natural gas production by ONGC during April-July, 2018 was 7951.17 MMSCM which is 5.94% lower than the cumulative target but 2.14% higher than the production during the corresponding period of the last year. The reasons for shortfall are as under:

- ❖ Restricted off-take ex-Odalarevu in Eastern Offshore Asset.
- ❖ Delay in completion of one development well in Rajahmundry.
- ❖ Sharp decline in gas production from GS-4 sand in Gandhar field.
- ❖ Less off-take by consumers/ grid restrictions in Tripura.

2.2 Natural gas production by **OIL** during July, 2018 was 231.09 MMSCM which is 14.79% lower than the monthly target and 7.65% lower than July, 2017. Cumulative natural gas production by OIL during April-July, 2018 was 900.44 MMSCM which is 14.75% and 7.53% lower than the cumulative target and production respectively during the corresponding period of last year. Major reason for lower production is loss of well head production potential of high producing wells of Deohal area, due to downhole tubing corrosion.

2.3 Natural gas production by **Pvt/JVs** during July, 2018 was 437.45 MMSCM which is 19.4% lower than the monthly target and 20.92% lower when compared with July, 2017. Cumulative natural gas production by Pvt/JVs during April-July, 2018 was 1930.73 MMSCM which is 11.06% lower than the cumulative target and 10.56% lower than the production during the corresponding period of last year. Reasons for shortfall are as under:

- ❖ Panna-Mukta: Plant shutdown due to SPM integrity issue. (SHELL).
- ❖ KG-DWN-98/3: Closure of 2 wells in D1D3 and 1 well in MA field. (RIL)
- ❖ Sohagpur West CBM Block: Underperformance of CBM wells (RIL).

### 3. Refinery Production (in terms of crude oil processed)

**Refinery production** during July, 2018 was 22409.68 TMT which is 6.44% higher than the target for the month and 9% higher when compared with July, 2017. Cumulative production during April-July, 2018 was 86368.63 TMT which is 1.82% higher than the target for the period and 6.02% higher than the production during corresponding period of last year. Unit-wise production is given at **Annexure-III**. Company-wise production for the month of July, 2018 and cumulatively for the period April-July, 2018 vis-à-vis same period of last year has been shown in Table-3 and month-wise in Figure-3.

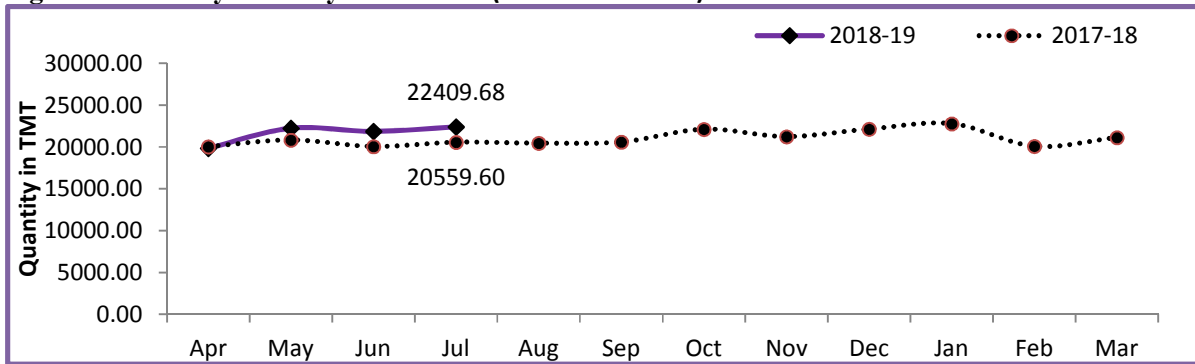
**Table 3: Refinery Production (Crude Processed) (TMT)**

Oil Company	Target	July (Month)				April-July (Cumulative)			
	2018-19 (Apr-Mar)	2018-19		2017-18	% over last year	2018-19		2017-18	% over last year
		Target	Prod.*	Prod.		Target	Prod.*	Prod.	
CPSE	147759	12090.83	12910.30	11991.80	107.66	48976.44	50035.87	47685.30	104.93
IOCL	71150	5864.18	6111.37	5377.82	113.64	23543.24	23777.80	22898.65	103.84
BPCL	29000	2511.01	2613.94	2399.91	108.92	9847.70	10388.33	8737.96	118.89
HPCL	18000	1390.91	1598.52	1591.52	100.44	5954.75	6119.67	6084.89	100.57
CPCL	10500	727.50	990.96	974.13	101.73	3460.00	3611.46	3563.06	101.36
NRL	2850	242.05	238.74	238.99	99.89	952.60	914.55	943.51	96.93
MRPL	16200	1350.00	1353.26	1403.88	96.39	5200.00	5204.51	5431.03	95.83
ONGC	59	5.18	3.51	5.55	63.20	18.15	19.56	26.21	74.62
JVs	17240	1523.00	1674.69	762.47	219.64	5916.00	6517.76	3357.30	194.14
BORL	6400	600.00	642.86	611.28	105.17	2290.00	2361.17	2384.48	99.02
HMEL	10840	923.00	1031.83	151.19	682.47	3626.00	4156.59	972.83	427.27
Private	88896	7439.53	7824.69	7805.33	100.25	29928.58	29815.00	30418.62	98.02
RIL	70470	6034.53	6037.67	6034.53	100.05	23521.58	22784.43	23521.58	96.87
EOL	18426	1405.00	1787.02	1770.81	100.92	6407.00	7030.57	6897.04	101.94
<b>TOTAL</b>	<b>253895</b>	<b>21053.36</b>	<b>22409.68</b>	<b>20559.60</b>	<b>109.00</b>	<b>84821.02</b>	<b>86368.63</b>	<b>81461.23</b>	<b>106.02</b>

Note: Totals may not tally due to rounding off.

\*: Provisional

**Figure 3: Monthly Refinery Production (Crude Processed)**



- 3.1 **CPSE Refineries' production** during July, 2018 was 12910.30 TMT which is 6.78% higher than the target for the month and 7.66% higher when compared with July, 2017. Cumulative production by CPSE refineries during April-July, 2018 was 50035.87 TMT which is 2.16% higher than the target for the period and 4.93% higher than the production during corresponding period of last year. The shortfall of refinery production in NRL, Numaligarh & MRPL, Mangalore due to ullage constraints in Intermediate Stock.
- 3.2 **Production in JV refineries** during July, 2018 was 1674.69 TMT which is 9.96% higher than the target for the month and 119.64% higher when compared with July, 2017. Cumulative production by JVs refineries during April-July, 2018 was 6517.76 TMT which is 10.17% higher than the target for the period and 94.14% higher than the production during corresponding period of last year. The major reason for high variation in production was major turnaround in HMEL refinery undertaken during April - July, 2017.
- 3.3 **Production in private refineries** during July, 2018 was 7824.69 TMT which is higher by 5.18% than the target for the month and 0.25% higher when compared with July, 2017. Cumulative production by private refineries during April-July, 2018 was 29815 TMT which is 0.38% and 1.98% lower when compared to target and production during corresponding period of last year respectively.
- 3.4 Refinery-wise details of the capacity utilization and production of petroleum products during the month of July, 2018 and cumulatively for the period April-July, 2018 vis-à-vis April-July, 2017 are given at **Annexures - IV and V** respectively.

\*\*\*\*\*

**MINISTRY OF PETROLEUM & NATURAL GAS**

**Annexure-I**

**Crude Oil Production during the month of July, 2018 and cumulatively for the period April-July, 2018 vis-à-vis April-July, 2017**

**(Para 1)**

(Qty: '000' Tonnes)

Name of Undertaking/Unit/State	Planned production during the month*	Production during the			Cumulative Production			% variation over last year		% variation during the month under review over planned production
		Month under review *	Corresponding month of last year **	Preceding month of current year **	(April-July)			year		
					Planned production during current year*	Actual production during current year *	Actual production during corresponding period of last year **	During the month under review	Upto the end of the period	
(1)	(2)	(3)	(4)	(5)	(6)	(7)	(8)	(9)	(10)	(11)
<b>1. ONGC</b>	<b>1932.01</b>	<b>1789.09</b>	<b>1917.56</b>	<b>1774.08</b>	<b>7434.24</b>	<b>7181.43</b>	<b>7559.26</b>	<b>-6.70</b>	<b>-5.00</b>	<b>-7.40</b>
<b>Onshore</b>	<b>517.35</b>	<b>512.35</b>	<b>501.62</b>	<b>497.45</b>	<b>2030.94</b>	<b>2020.90</b>	<b>2007.91</b>	<b>2.14</b>	<b>0.65</b>	<b>-0.97</b>
Andhra Pradesh	29.24	20.75	27.40	21.67	118.47	93.40	110.50	-24.28	-15.48	-29.04
Assam ^	86.52	84.24	83.52	79.62	335.44	327.83	329.28	0.87	-0.44	-2.64
Gujarat	383.15	381.34	367.53	372.04	1505.72	1504.38	1480.22	3.76	1.63	-0.47
Tamil Nadu	18.45	26.02	23.17	24.13	71.31	95.29	87.92	12.29	8.39	41.07
<b>Offshore</b>	<b>1414.66</b>	<b>1276.74</b>	<b>1415.94</b>	<b>1276.63</b>	<b>5403.30</b>	<b>5160.53</b>	<b>5551.35</b>	<b>-9.83</b>	<b>-7.04</b>	<b>-9.75</b>
Eastern Offshore	0.79	1.10	0.79	1.17	2.72	4.43	2.92	39.57	51.78	40.23
Western Offshore	1297.80	1156.39	1285.48	1149.63	4952.16	4656.83	5073.60	-10.04	-8.21	-10.90
Condensates	116.07	119.25	129.67	125.82	448.41	499.27	474.84	-8.04	5.15	2.74
<b>2. OIL (Onshore)</b>	<b>306.14</b>	<b>287.18</b>	<b>288.31</b>	<b>278.54</b>	<b>1176.22</b>	<b>1125.07</b>	<b>1128.77</b>	<b>-0.39</b>	<b>-0.33</b>	<b>-6.20</b>
Assam	305.40	286.39	287.52	277.77	1173.27	1121.96	1125.49	-0.39	-0.31	-6.22
Arunachal Pradesh	0.56	0.59	0.64	0.57	2.22	2.32	2.52	-8.26	-7.97	5.75
Rajasthan (heavy oil)	0.19	0.20	0.16	0.20	0.74	0.79	0.75	26.45	4.38	4.90
<b>3. Private / JVC</b>	<b>864.63</b>	<b>819.97</b>	<b>855.24</b>	<b>831.77</b>	<b>3429.95</b>	<b>3396.91</b>	<b>3397.06</b>	<b>-4.12</b>	<b>0.00</b>	<b>-5.17</b>
<b>Onshore</b>	<b>719.85</b>	<b>676.06</b>	<b>690.85</b>	<b>664.25</b>	<b>2832.24</b>	<b>2773.49</b>	<b>2745.46</b>	<b>-2.14</b>	<b>1.02</b>	<b>-6.08</b>
Andhra Pradesh	2.42	1.59	0.00	0.96	10.99	3.70	0.00	-	-	<b>-34.22</b>
Arunachal Pradesh	3.73	3.01	3.78	2.99	14.55	12.40	15.01	-20.39	-17.40	-19.21
Assam	3.53	2.73	0.00	2.75	13.91	8.86	0.00	-	-	-22.64
Gujarat	16.17	11.45	11.08	11.95	61.54	47.61	44.48	3.30	7.04	-29.20
Rajasthan	683.59	649.08	668.56	638.59	2690.24	2672.63	2657.95	-2.91	0.55	-5.05
Tamil Nadu	10.42	8.20	7.42	7.01	41.02	28.29	28.01	10.48	1.00	-21.30
<b>Offshore</b>	<b>144.78</b>	<b>143.91</b>	<b>164.39</b>	<b>167.52</b>	<b>597.70</b>	<b>623.42</b>	<b>651.61</b>	<b>-12.46</b>	<b>-4.33</b>	<b>-0.60</b>
Eastern Offshore	53.94	57.64	70.61	56.30	219.23	223.22	296.27	-18.37	-24.66	6.85
Gujarat Offshore	47.91	60.82	33.28	60.39	192.87	232.16	124.69	82.75	86.18	26.96
Western Offshore	42.93	25.45	60.50	50.83	185.61	168.04	230.65	-57.93	-27.14	-40.71
<b>GRAND TOTAL (1+2+3)</b>	<b>3102.79</b>	<b>2896.24</b>	<b>3061.11</b>	<b>2884.39</b>	<b>12040.40</b>	<b>11703.41</b>	<b>12085.09</b>	<b>-5.39</b>	<b>-3.16</b>	<b>-6.66</b>
Onshore	1543.35	1475.58	1480.78	1440.24	6039.40	5919.47	5882.14	-0.35	0.63	-4.39
Offshore	1559.44	1420.66	1580.33	1444.15	6001.00	5783.95	6202.95	-10.10	-6.75	-8.90

Note: Totals may not tally due to rounding off figures.

^: Includes crude oil production of Tripura

\*: Provisional. \*\*: Revised

Reasons for shortfall are indicated in the note.

**MINISTRY OF PETROLEUM & NATURAL GAS**

**Annexure-II**

**Natural Gas Production during the month of July, 2018 and cumulatively for the period April-July, 2018 vis-à-vis April-July, 2017**

**(Para 2)**

(Qty: Million Cubic Meters)

Name of Undertaking/Unit/State	Planned production during the month*	Production during the			Cumulative Production (April-July)			% variation over last year		% variation during the month under review over planned production
		Month under review *	Corresponding month of last year **	Preceding month of current year **	Planned production during current year*	Actual production during current year *	Actual production during corresponding period of last year **	During the month under review	Upto the end of the period	
(1)	(2)	(3)	(4)	(5)	(6)	(7)	(8)	(9)	(10)	(11)
<b>1. ONGC</b>	<b>2192.15</b>	<b>2044.98</b>	<b>2055.36</b>	<b>1952.61</b>	<b>8453.41</b>	<b>7951.17</b>	<b>7784.37</b>	<b>-0.50</b>	<b>2.14</b>	<b>-6.71</b>
<b>Onshore</b>	<b>498.99</b>	<b>477.97</b>	<b>487.75</b>	<b>430.72</b>	<b>1937.91</b>	<b>1857.03</b>	<b>1892.15</b>	<b>-2.00</b>	<b>-1.86</b>	<b>-4.21</b>
Andhra Pradesh	92.46	90.66	76.53	67.36	370.99	355.71	292.49	18.47	21.62	-1.94
Assam	40.42	41.55	43.53	40.66	156.72	162.62	166.67	-4.56	-2.43	2.78
Gujarat	131.15	112.43	134.27	108.93	521.27	444.52	538.70	-16.26	-17.48	-14.27
Rajasthan	0.48	0.75	0.26	0.68	1.87	2.76	1.18	186.03	133.53	57.42
Tamil Nadu	98.69	103.16	102.86	95.69	390.37	400.39	389.92	0.29	2.68	4.53
Tripura	135.80	129.43	130.29	117.41	496.68	491.03	503.19	-0.67	-2.42	-4.70
<b>Offshore</b>	<b>1693.15</b>	<b>1567.00</b>	<b>1567.61</b>	<b>1521.89</b>	<b>6515.49</b>	<b>6094.14</b>	<b>5892.23</b>	<b>-0.04</b>	<b>3.43</b>	<b>-7.45</b>
Eastern Offshore	181.17	65.89	49.23	65.10	623.01	242.69	202.12	33.82	20.07	-63.63
Western Offshore	1511.99	1501.12	1518.38	1456.78	5892.48	5851.46	5690.11	-1.14	2.84	-0.72
<b>2. OIL</b>	<b>271.19</b>	<b>231.09</b>	<b>250.23</b>	<b>220.49</b>	<b>1056.25</b>	<b>900.44</b>	<b>973.75</b>	<b>-7.65</b>	<b>-7.53</b>	<b>-14.79</b>
Assam	251.85	212.46	235.34	201.70	980.12	823.89	903.12	-9.72	-8.77	-15.64
Arunachal Pradesh	1.09	0.81	1.03	0.95	4.27	3.75	3.94	-21.50	-4.92	-25.62
Rajasthan	18.26	17.82	13.86	17.85	71.86	72.80	66.68	28.57	9.18	-2.43
<b>3. Private / JVC</b>	<b>542.73</b>	<b>437.45</b>	<b>553.15</b>	<b>504.78</b>	<b>2170.82</b>	<b>1930.73</b>	<b>2158.60</b>	<b>-20.92</b>	<b>-10.56</b>	<b>-19.40</b>
<b>Onshore</b>	<b>150.78</b>	<b>145.48</b>	<b>112.31</b>	<b>143.92</b>	<b>579.68</b>	<b>564.27</b>	<b>441.53</b>	<b>29.54</b>	<b>27.80</b>	<b>-3.52</b>
Andhra Pradesh	0.98	0.63	0.00	0.39	4.69	1.57	0.00	-	-	-35.34
Assam	30.72	26.26	0.00	25.42	120.91	85.80	0.00	-	-	-14.53
Arunachal Pradesh	0.84	1.79	1.36	1.74	3.30	7.28	5.37	30.96	35.48	112.89
Gujarat	7.75	6.04	6.66	6.11	25.88	24.37	27.10	-9.20	-10.09	-22.00
Rajasthan	107.77	108.45	103.10	108.84	414.17	438.99	404.95	5.19	8.40	0.64
Tamil Nadu	2.73	2.31	1.19	1.43	10.74	6.27	4.11	94.85	52.74	-15.35
<b>CBM</b>	<b>132.68</b>	<b>57.68</b>	<b>59.64</b>	<b>58.16</b>	<b>522.16</b>	<b>241.43</b>	<b>204.59</b>	<b>-3.28</b>	<b>18.01</b>	<b>-56.52</b>
Jharkhand (CBM)	0.36	0.25	0.32	0.23	1.40	0.91	1.35	-22.47	-32.62	-31.28
Madhya Pradesh (CBM)	79.26	28.82	11.44	29.34	311.95	121.00	20.04	151.83	503.90	-63.64
West Bengal (CBM)	53.06	28.62	47.88	28.59	208.81	119.52	183.20	-40.23	-34.76	-46.06
<b>Offshore</b>	<b>259.27</b>	<b>234.29</b>	<b>381.21</b>	<b>302.69</b>	<b>1068.98</b>	<b>1125.03</b>	<b>1512.48</b>	<b>-38.54</b>	<b>-25.62</b>	<b>-9.64</b>
Eastern Offshore	124.10	153.84	204.04	146.10	510.16	607.26	869.65	-24.61	-30.17	23.96
Gujarat Offshore	12.50	9.24	9.67	8.70	50.90	34.65	30.93	-4.41	12.03	-26.08
Western Offshore	122.67	71.21	167.50	147.90	507.92	483.12	611.90	-57.49	-21.05	-41.95
<b>TOTAL (1+2+3)</b>	<b>3006.07</b>	<b>2713.52</b>	<b>2858.73</b>	<b>2677.88</b>	<b>11680.48</b>	<b>10782.35</b>	<b>10916.72</b>	<b>-5.08</b>	<b>-1.23</b>	<b>-9.73</b>
CBM	132.68	57.68	59.64	58.16	522.16	241.43	204.59	-3.28	18.01	-56.52
Onshore	920.97	854.54	850.28	795.14	3573.85	3321.74	3307.43	0.50	0.43	-7.21
Offshore	1952.42	1801.29	1948.82	1824.58	7584.48	7219.17	7404.70	-7.57	-2.51	-7.74

Note: Totals may not tally due to rounding off figures.

\*: Provisional. \*\*: Revised

CBM: Coal Bed Methane production.

Reasons for shortfall are indicated in the note.

**MINISTRY OF PETROLEUM & NATURAL GAS**

Annexure-III

**Crude Oil Processed during the month of July, 2018 and cumulatively for the period April-July, 2018 vis-à-vis April-July, 2017**

(Para 3)

(Qty: '000' Tonnes)

Name of Undertaking/Unit	Planned production during the month*	Production during the			Cumulative Production			% variation over last year		% variation during the month under review over planned production
		Month under review *	Corresponding month of last year	Preceding month of current year **	(April-July)			During the month under	Upto the end of the period	
					Planned production during current year*	Actual production during current year *	Actual production during corresponding period of last year **			
(1)	(2)	(3)	(4)	(5)	(6)	(7)	(8)	(9)	(10)	(11)
<b>A. Public Sector</b>	<b>12090.83</b>	<b>12910.30</b>	<b>11991.80</b>	<b>12697.66</b>	<b>48976.44</b>	<b>50035.87</b>	<b>47685.30</b>	<b>7.66</b>	<b>4.93</b>	<b>6.78</b>
1. IOC, Guwahati	90.00	91.64	86.18	90.73	336.00	364.30	324.40	6.34	12.30	1.82
2. IOC, Barauni	441.89	550.39	303.63	475.16	2103.05	2189.99	1945.33	81.27	12.58	24.55
3. IOC, Gujarat	989.02	970.56	885.48	1166.37	4709.99	4580.29	3964.09	9.61	15.54	-1.87
4. IOC, Haldia	660.00	699.41	690.84	687.72	2665.00	2711.34	2730.08	1.24	-0.69	5.97
5. IOC, Mathura	750.20	813.75	802.48	841.90	3237.57	3361.13	3249.93	1.41	3.42	8.47
6. IOC, Digboi	56.00	58.50	59.76	56.34	220.00	228.86	219.87	-2.11	4.09	4.47
7. IOC, Panipat	1370.00	1386.14	1001.55	1345.67	5374.00	5468.03	5040.28	38.40	8.49	1.18
8. IOC, Bongaigaon	186.85	210.58	233.86	195.85	731.54	787.19	810.32	-9.95	-2.85	12.70
9. IOC, Paradip	1320.22	1330.41	1314.05	1211.64	4166.09	4086.66	4614.36	1.24	-11.44	0.77
<b>Total IOC</b>	<b>5864.18</b>	<b>6111.37</b>	<b>5377.82</b>	<b>6071.38</b>	<b>23543.24</b>	<b>23777.80</b>	<b>22898.65</b>	<b>13.64</b>	<b>3.84</b>	<b>4.22</b>
10. BPCL, Mumbai	1137.13	1256.94	1210.05	1267.64	4531.85	5002.53	4294.80	3.88	16.48	10.54
11. BPCL, Kochi	1373.88	1357.00	1189.86	1315.28	5315.85	5385.79	4443.16	14.05	21.22	-1.23
<b>Total BPCL</b>	<b>2511.01</b>	<b>2613.94</b>	<b>2399.91</b>	<b>2582.92</b>	<b>9847.70</b>	<b>10388.33</b>	<b>8737.96</b>	<b>8.92</b>	<b>18.89</b>	<b>4.10</b>
12. HPCL, Mumbai	729.57	760.41	738.21	674.95	2871.21	2870.39	2870.09	3.01	0.01	4.23
13. HPCL, Visakh	661.34	838.12	853.31	832.19	3083.53	3249.28	3214.80	-1.78	1.07	26.73
<b>Total HPCL</b>	<b>1390.91</b>	<b>1598.52</b>	<b>1591.52</b>	<b>1507.14</b>	<b>5954.75</b>	<b>6119.67</b>	<b>6084.89</b>	<b>0.44</b>	<b>0.57</b>	<b>14.93</b>
14. CPCL, Manali	690.00	961.02	931.91	875.58	3310.00	3470.07	3394.50	3.12	2.23	39.28
15. CPCL, CBR	37.50	29.94	42.22	41.45	150.00	141.40	168.56	-29.10	-16.12	-20.17
<b>Total CPCL</b>	<b>727.50</b>	<b>990.96</b>	<b>974.13</b>	<b>917.02</b>	<b>3460.00</b>	<b>3611.46</b>	<b>3563.06</b>	<b>1.73</b>	<b>1.36</b>	<b>36.21</b>
16. NRL, Numaligarh	242.05	238.74	238.99	237.57	952.60	914.55	943.51	-0.11	-3.07	-1.37
17. MRPL, Mangalore	1350.00	1353.26	1403.88	1378.20	5200.00	5204.51	5431.03	-3.61	-4.17	0.24
18. ONGC, Tatipaka	5.18	3.51	5.55	3.44	18.15	19.56	26.21	-36.80	-25.38	-32.34
<b>B. Joint Venture</b>	<b>1523.00</b>	<b>1674.69</b>	<b>762.47</b>	<b>1650.99</b>	<b>5916.00</b>	<b>6517.76</b>	<b>3357.30</b>	<b>119.64</b>	<b>94.14</b>	<b>9.96</b>
19. BORL, Bina	600.00	642.86	611.28	615.88	2290.00	2361.17	2384.48	5.17	-0.98	7.14
20. HMEI, GGSR, Bhatinda	923.00	1031.83	151.19	1035.11	3626.00	4156.59	972.83	582.47	327.27	11.79
<b>C. Private Sector</b>	<b>7439.53</b>	<b>7824.69</b>	<b>7805.33</b>	<b>7516.37</b>	<b>29928.58</b>	<b>29815.00</b>	<b>30418.62</b>	<b>0.25</b>	<b>-1.98</b>	<b>5.18</b>
21. RIL, Jamnagar	2790.37	2836.71	2790.37	2701.37	10820.41	11006.56	10820.41	1.66	1.72	1.66
22. RIL, SEZ	3244.16	3200.96	3244.16	3091.01	12701.17	11777.87	12701.17	-1.33	-7.27	-1.33
<b>Total RIL</b>	<b>6034.53</b>	<b>6037.67</b>	<b>6034.53</b>	<b>5792.38</b>	<b>23521.58</b>	<b>22784.43</b>	<b>23521.58</b>	<b>0.05</b>	<b>-3.13</b>	<b>0.05</b>
23. NEL, Vadinar	1405.00	1787.02	1770.81	1723.99	6407.00	7030.57	6897.04	0.92	1.94	27.19
<b>TOTAL(A+B+C)</b>	<b>21053.36</b>	<b>22409.68</b>	<b>20559.60</b>	<b>21865.02</b>	<b>84821.02</b>	<b>86368.63</b>	<b>81461.23</b>	<b>9.00</b>	<b>6.02</b>	<b>6.44</b>

Note: Totals may not tally due to rounding off figures. \*: Provisional. \*\*:Revised

Reasons for shortfall are indicated in the note.



MINISTRY OF PETROLEUM & NATURAL GAS

Annexure-IV

Refinery-wise Capacity Utilisation during the month of July, 2018 and cumulatively for the period April-July, 2018 vis-à-vis April-July, 2017

(Para 3.4)

(Qty: '000' Tonnes)

Name of Undertaking/Unit	July, 2018			July, 2017			Cumulative (April - July)					
	Prorated Installed Capacity	Actual Crude T'put *	% Utilisation of Installed Capacity	Prorated Installed Capacity	Actual Crude T'put	% Utilisation of Installed Capacity	2018-19			2017-18		
							Prorated Installed Capacity	Actual Crude T'put *	% Utilisation of Installed Capacity	Prorated Installed Capacity	Actual Crude T'put **	% Utilisation of Installed Capacity
(1)	(2)	(3)	(4)	(5)	(6)	(7)	(8)	(9)	(10)	(11)	(12)	(13)
<b>A. Public Sector</b>	<b>12066.00</b>	<b>12910.30</b>	<b>107.00</b>	<b>11805.00</b>	<b>11991.80</b>	<b>101.58</b>	<b>47485.00</b>	<b>50035.87</b>	<b>105.37</b>	<b>46459.00</b>	<b>47685.30</b>	<b>102.64</b>
1. IOC, Guwahati	85.00	91.64	107.81	85.00	86.18	101.38	334.00	364.30	109.07	334.00	324.40	97.13
2. IOC, Barauni	510.00	550.39	107.92	510.00	303.63	59.54	2005.00	2189.99	109.23	2005.00	1945.33	97.02
3. IOC, Gujarat	1164.00	970.56	83.38	1164.00	885.48	76.07	4579.00	4580.29	100.03	4579.00	3964.09	86.57
4. IOC, Haldia	637.00	699.41	109.80	637.00	690.84	108.45	2507.00	2711.34	108.15	2507.00	2730.08	108.90
5. IOC, Mathura	679.00	813.75	119.85	679.00	802.48	118.18	2674.00	3361.13	125.70	2674.00	3249.93	121.54
6. IOC, Digboi	55.00	58.50	106.37	55.00	59.76	108.66	217.00	228.86	105.47	217.00	219.87	101.32
7. IOC, Panipat	1274.00	1386.14	108.80	1274.00	1001.55	78.61	5014.00	5468.03	109.06	5014.00	5040.28	100.52
8. IOC, Bongaigaon	200.00	210.58	105.29	200.00	233.86	116.93	785.00	787.19	100.28	785.00	810.32	103.23
9. IOC, Paradip	1274.00	1330.41	104.43	1274.00	1314.05	0.00	5014.00	4086.66	81.51	5014.00	4614.36	0.00
<b>Total IOC</b>	<b>5877.00</b>	<b>6111.37</b>	<b>103.99</b>	<b>5877.00</b>	<b>5377.82</b>	<b>91.51</b>	<b>23130.00</b>	<b>23777.80</b>	<b>102.80</b>	<b>23130.00</b>	<b>22898.65</b>	<b>99.00</b>
10. BPCL, Mumbai	1019.00	1256.94	123.35	1019.00	1210.05	118.75	4011.00	5002.53	124.72	4011.00	4294.80	107.08
11. BPCL, Kochi	1316.00	1357.00	103.12	1053.00	1189.86	113.00	5181.00	5385.79	103.95	4145.00	4443.16	107.19
<b>Total BPCL</b>	<b>2336.00</b>	<b>2613.94</b>	<b>111.90</b>	<b>2072.00</b>	<b>2399.91</b>	<b>115.83</b>	<b>9192.00</b>	<b>10388.33</b>	<b>113.01</b>	<b>8156.00</b>	<b>8737.96</b>	<b>107.14</b>
12. HPCL, Mumbai	637.00	760.41	119.37	637.00	738.21	115.89	2507.00	2870.39	114.50	2507.00	2870.09	114.48
13. HPCL, Visakh	705.00	838.12	118.88	707.00	853.31	120.69	2774.00	3249.28	117.13	2784.00	3214.80	115.47
<b>Total HPCL</b>	<b>1342.00</b>	<b>1598.52</b>	<b>119.11</b>	<b>1344.00</b>	<b>1591.52</b>	<b>118.42</b>	<b>5281.00</b>	<b>6119.67</b>	<b>115.88</b>	<b>5291.00</b>	<b>6084.89</b>	<b>115.00</b>
14. CPCL, Manali	892.00	961.02	107.74	892.00	931.91	104.47	3510.00	3470.07	98.86	3510.00	3394.50	96.71
15. CPCL, CBR	85.00	29.94	35.22	85.00	42.22	49.67	334.00	141.40	42.33	334.00	168.56	50.47
<b>Total CPCL</b>	<b>977.00</b>	<b>990.96</b>	<b>101.43</b>	<b>977.00</b>	<b>974.13</b>	<b>99.71</b>	<b>3844.00</b>	<b>3611.46</b>	<b>93.95</b>	<b>3844.00</b>	<b>3563.06</b>	<b>92.69</b>
16. NRL, Numaligarh	255.00	238.74	93.62	255.00	238.99	238.74	1003.00	914.55	91.18	1003.00	943.51	94.07
17. MRPL, Mangalore	1274.00	1353.26	106.22	1274.00	1403.88	110.19	5014.00	5204.51	103.80	5014.00	5431.03	108.32
18. ONGC, Tatipaka	6.00	3.51	58.43	6.00	5.55	92.46	22.00	19.56	88.89	22.00	26.21	119.12
<b>B. Joint Venture</b>	<b>1469.00</b>	<b>1674.69</b>	<b>114.00</b>	<b>1274.00</b>	<b>762.47</b>	<b>59.85</b>	<b>5782.00</b>	<b>6517.76</b>	<b>112.73</b>	<b>5014.00</b>	<b>3357.30</b>	<b>66.96</b>
19. BORL, Bina	510.00	642.86	126.05	510.00	611.28	119.86	2005.00	2361.17	117.76	2005.00	2384.48	118.93
20. HMEL, GGSR, Bhatinda	960.00	1031.83	107.48	764.00	151.19	19.79	3777.00	4156.59	110.05	3008.00	972.83	32.34
<b>C. Private Sector</b>	<b>7491.00</b>	<b>7824.69</b>	<b>104.45</b>	<b>6795.00</b>	<b>7805.33</b>	<b>114.87</b>	<b>29481.00</b>	<b>29815.00</b>	<b>101.13</b>	<b>26740.00</b>	<b>30418.62</b>	<b>113.76</b>
21. RIL, Jamnagar	2803.00	2836.71	101.20	2803.00	2790.37	99.55	11030.00	11006.56	99.79	11030.00	10820.41	98.10
22. RIL, SEZ	2990.00	3200.96	107.06	2293.00	3244.16	141.48	11765.00	11777.87	100.11	9025.00	12701.17	140.73
<b>Total RIL</b>	<b>5792.00</b>	<b>6037.67</b>	<b>104.24</b>	<b>5096.00</b>	<b>6034.53</b>	<b>118.42</b>	<b>22796.00</b>	<b>22784.43</b>	<b>99.95</b>	<b>20055.00</b>	<b>23521.58</b>	<b>117.29</b>
23. NEL, Vadinar	1699.00	1787.02	105.18	1699.00	1770.81	104.23	6685.00	7030.57	105.17	6685.00	6897.04	103.17
<b>TOTAL(A+B+C)</b>	<b>21026.00</b>	<b>22409.68</b>	<b>106.58</b>	<b>19874.00</b>	<b>20559.60</b>	<b>103.45</b>	<b>82748.00</b>	<b>86368.63</b>	<b>104.38</b>	<b>78212.00</b>	<b>81461.23</b>	<b>104.15</b>

Note: Crude throughput in terms of crude oil processed. \*: Provisional. \*\*: Revised

**MINISTRY OF PETROLEUM & NATURAL GAS**

**Production of Petroleum Products during the month of July, 2018 and cumulatively for the period April-July, 2018 vis-à-vis April-July, 2017**

Annexure-V

(Para 3.4)

(Qty: '000' Tonnes)

Name of Undertaking/Unit	Planned production during the month*	Production during the			Cumulative Production			% variation over last year		% variation during the month under review over planned production
		Month under review *	Corresponding month of last year	Preceding month of current year **	(April-July)			During the month under review	Upto the end of the period	
					Planned production during current year*	Actual production during current year*	Actual production during corresponding period of last year**			
(1)	(2)	(3)	(4)	(5)	(6)	(7)	(8)	(9)	(10)	(11)
<b>I. Refinery</b>										
<b>A. Public Sector</b>	<b>11338.30</b>	<b>12289.31</b>	<b>11338.31</b>	<b>12137.63</b>	<b>45932.19</b>	<b>47172.88</b>	<b>44988.88</b>	<b>8.39</b>	<b>4.85</b>	<b>8.39</b>
1. IOC, Guwahati	90.38	104.66	108.30	90.31	318.99	402.19	357.14	-3.37	12.61	15.80
2. IOC, Barauni	443.91	515.18	268.66	475.60	1982.04	2082.93	1846.28	91.76	12.82	16.06
3. IOC, Gujarat	888.08	879.41	818.13	1114.87	4342.79	4309.89	3865.47	7.49	11.50	-0.98
4. IOC, Haldia	611.53	679.44	637.29	648.40	2460.84	2567.47	2545.83	6.61	0.85	11.11
5. IOC, Mathura	726.26	795.34	842.72	829.28	3114.78	3276.97	3243.08	-5.62	1.04	9.51
6. IOC, Digboi	55.46	56.97	58.77	56.91	217.51	230.29	215.57	-3.07	6.83	2.71
7. IOC, Panipat	1369.93	1407.23	968.10	1387.75	5457.36	5541.26	4923.19	45.36	12.55	2.72
8. IOC, Bongaigaon	171.21	193.59	211.17	187.52	670.35	722.84	667.29	-8.33	8.33	13.07
9. IOC, Paradip	1193.45	1182.35	1173.84	1121.75	3706.98	3632.53	4144.76	0.73	-12.36	-0.93
<b>Total IOC</b>	<b>5550.20</b>	<b>5814.15</b>	<b>5086.98</b>	<b>5912.40</b>	<b>22271.64</b>	<b>22766.37</b>	<b>21808.61</b>	<b>14.29</b>	<b>4.39</b>	<b>4.76</b>
10. BPCL, Mumbai	1092.73	1202.85	1179.75	1225.67	4355.22	4812.54	4158.85	1.96	15.72	10.08
11. BPCL, Kochi	1282.65	1321.68	1103.83	1283.75	4937.33	4992.46	4239.76	19.74	17.75	3.04
<b>Total BPCL</b>	<b>2375.38</b>	<b>2524.53</b>	<b>2283.58</b>	<b>2509.43</b>	<b>9292.55</b>	<b>9805.00</b>	<b>8398.61</b>	<b>10.55</b>	<b>16.75</b>	<b>6.28</b>
12. HPCL, Mumbai	684.63	734.25	708.84	640.97	2696.80	2690.00	2679.91	3.58	0.38	7.25
13. HPCL, Visakh	603.02	796.31	814.60	735.40	2842.86	3032.75	2981.84	-2.25	1.71	32.05
<b>Total HPCL</b>	<b>1287.65</b>	<b>1530.56</b>	<b>1523.44</b>	<b>1376.37</b>	<b>5539.66</b>	<b>5722.75</b>	<b>5661.74</b>	<b>0.47</b>	<b>1.08</b>	<b>18.86</b>
14. CPCL, Manali	618.87	865.72	861.00	809.73	2987.15	3109.64	3078.80	0.55	1.00	39.89
15. CPCL, CBR	37.95	30.18	42.51	41.39	151.80	141.68	169.82	-29.00	-16.57	-20.47
<b>Total CPCL</b>	<b>656.82</b>	<b>895.90</b>	<b>903.51</b>	<b>851.12</b>	<b>3138.95</b>	<b>3251.32</b>	<b>3248.62</b>	<b>-0.84</b>	<b>0.08</b>	<b>36.40</b>
16. NRL, Numaligarh	236.33	228.92	242.22	226.29	930.08	891.50	984.83	-5.49	-9.48	-3.14
17. MRPL, Mangalore	1226.91	1291.96	1293.26	1258.91	4741.78	4717.21	4861.35	-0.10	-2.96	5.30
18. ONGC, Tatipaka	5.01	3.29	5.32	3.11	17.53	18.74	25.12	-38.09	-25.42	-34.20
<b>B. Joint Venture</b>	<b>1418.70</b>	<b>1550.17</b>	<b>747.40</b>	<b>1528.85</b>	<b>5513.54</b>	<b>6053.34</b>	<b>3161.93</b>	<b>107.41</b>	<b>91.44</b>	<b>9.27</b>
19. BORL, Bina	543.60	595.42	554.64	563.84	2074.74	2151.41	2213.69	7.35	-2.81	9.53
20. HMEL, GGSR, Bhatinda^	875.10	954.74	192.76	965.00	3438.80	3901.93	948.23	395.30	311.49	9.10
<b>C. Private Sector</b>	<b>7337.67</b>	<b>8456.26</b>	<b>7716.78</b>	<b>8598.14</b>	<b>31272.16</b>	<b>33021.73</b>	<b>31704.75</b>	<b>9.58</b>	<b>4.15</b>	<b>15.24</b>
21. RIL, Jamnagar	2536.51	2903.48	2536.51	2960.51	10647.96	11532.98	10647.96	14.47	8.31	14.47
22. RIL, SEZ	3455.49	3797.26	3455.49	4007.21	14476.53	14688.39	14476.53	9.89	1.46	9.89
<b>Total RIL</b>	<b>5992.00</b>	<b>6700.74</b>	<b>5992.00</b>	<b>6967.73</b>	<b>25124.49</b>	<b>26221.37</b>	<b>25124.49</b>	<b>11.83</b>	<b>4.37</b>	<b>11.83</b>
23. NEL, Vadinar	1345.67	1755.52	1724.78	1630.42	6147.67	6800.37	6580.26	1.78	3.34	30.46
<b>TOTAL(A+B+C)</b>	<b>20094.67</b>	<b>22295.74</b>	<b>19802.49</b>	<b>22264.62</b>	<b>82717.88</b>	<b>86247.95</b>	<b>79855.56</b>	<b>12.59</b>	<b>8.00</b>	<b>10.95</b>
<b>II. Fractionators</b>										
ONGC	272.54	301.00	300.40	301.07	1056.93	1152.28	1054.32	0.20	9.29	10.44
GAIL	110.00	106.77	110.36	97.45	397.30	416.62	404.28	-3.25	3.05	-2.93
OIL	3.20	3.13	3.24	1.43	10.70	11.03	8.54	-3.27	29.23	-2.13
<b>D. Total Fractionators</b>	<b>385.74</b>	<b>410.91</b>	<b>414.00</b>	<b>399.95</b>	<b>1464.93</b>	<b>1579.93</b>	<b>1467.14</b>	<b>-0.75</b>	<b>7.69</b>	<b>6.52</b>
<b>Grand Total (A+B+C+D)</b>	<b>20480.41</b>	<b>22706.64</b>	<b>20216.49</b>	<b>22664.57</b>	<b>84182.82</b>	<b>87827.89</b>	<b>81322.70</b>	<b>12.32</b>	<b>8.00</b>	<b>10.87</b>

Note: Totals may not tally due to rounding off figures.

\*: Provisional. \*\*: Revised