

**Government of India**  
**Ministry of Petroleum and Natural Gas**  
**Economic & Statistics Division**

\*\*\*\*\*

New Delhi  
Dated the 21<sup>st</sup> February, 2018

**Monthly Production Report**  
**January, 2018**

**Crude Oil**

1. **Crude oil production<sup>1</sup>** during January, 2018 was 2976.41 TMT which is 5.88% lower than target and 3.22% lower when compared with January 2017. Cumulative crude oil production during April-January, 2017-18 was 29910.80 TMT which is 4.48% lower than target for the period and 0.7% lower than production during corresponding period of last year. Unit-wise and State-wise crude oil production is given at **Annexure-I**. Unit-wise crude oil production for the month of January, 2018 and cumulatively for the period April-January, 2017-18 vis-à-vis same period of last year has been shown in Table-1 and month-wise in Figure-1.

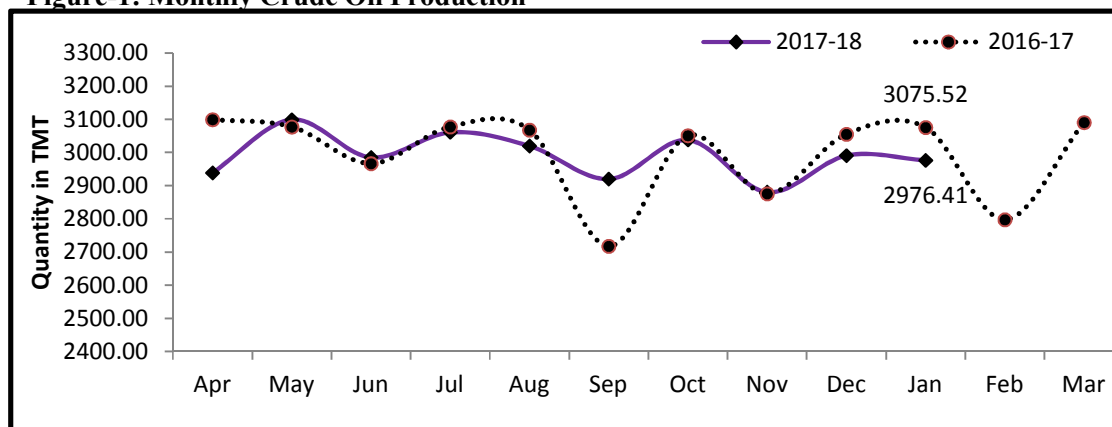
**Table-1: Crude Oil Production (in TMT)**

Oil Company	Target	January (Month)				April-January (Cumulative)			
	2017-18 (Apr-Mar)	2017-18		2016-17	% over last year	2017-18		2016-17	% over last year
		Target	Prod.*	Prod.		Target	Prod.*	Prod.	
ONGC	23071.00	1942.59	1836.79	1916.36	95.85	19272.91	18685.49	18545.46	100.76
OIL	3734.00	317.03	285.40	274.06	104.14	3130.03	2833.82	2704.51	104.78
PSC Fields	10562.00	902.89	854.21	885.10	96.51	8912.15	8391.50	8870.89	94.60
<b>Total</b>	<b>37367.00</b>	<b>3162.50</b>	<b>2976.41</b>	<b>3075.52</b>	<b>96.78</b>	<b>31315.10</b>	<b>29910.80</b>	<b>30120.86</b>	<b>99.30</b>

Note: Totals may not tally due to rounding off.

\*: Provisional

**Figure-1: Monthly Crude Oil Production**



<sup>1</sup>Including condensate

Unit-wise production details with reasons for shortfall are as under:

1.1 Crude oil production by **ONGC** during January, 2018 was 1836.79 TMT which is 5.45% lower than the monthly target and 4.15% lower when compared with January, 2017. Cumulative crude oil production by ONGC during April-January, 2017-18 was 18685.49 TMT which is 3.05% lower than target for the period but 0.76% higher than production during corresponding period of last year. Reasons for shortfall in production with respect to target are as under:

- Delay in implementation of “Conversion of Sagar Samrat to MOPU” Project.
- Non realisation of Production planned from project “Integrated Development of B 127 Cluster” from Oct’2017 onwards due to delay in implementation of project.
- Repairing of gas leakage in 8” Gas lift line from NLP to NLM-8 well platform and 4” branches to NLM-6 & NLM-7 well platforms from 2<sup>nd</sup> – 28<sup>th</sup> January, 2018.
- Production from NBP field in western offshore affected due to ESP related issues.
- Rig is deployed at NBP-B and NBP-C well platforms for remedial measures.
- Increase in water cut in wells of Heera, Neelam, B-173 fields and Kesnapalli west field of Rajahmundry.
- Frequent power shutdowns & low gas injection pressure in Mehsana & Assam hampered Artificial Lift operations.
- Wells closed for cluster drilling/ rig movements in Assam.

1.2 Crude oil production by **OIL** during January, 2018 was 285.40 TMT which is 9.98% lower than monthly target but 4.14% higher than production in January, 2017. Cumulative crude oil production by OIL during April-January, 2017-18 was 2833.82 TMT which is 9.46% lower than target for the period but 4.78% higher than production during the corresponding period of last year. Reasons for shortfall in production are as under:

- Less than planned contribution from old wells – Rise in water cut in wells and decline in total liquid production of wells of Greater Hapjan and Greater Chandmari Fields.
- Less than planned contribution from work over wells

1.3 Crude oil production by **Pvt/JVs** during January, 2018 was 854.21 TMT which is 5.39% lower than the monthly target and 3.49% lower than January, 2017. Cumulative crude oil production by Pvt/JVs during April-January, 2017-18 was 8391.50 TMT which is 5.84% lower than target for the period and 5.40% lower than the production during the corresponding period of last year. Reasons for shortfall in production are as under:

- RJ-ON-90/1: 1) Mangala production lowered due to voltage dip on 26 Jan 2018 and power fluid pump maintenance on 31 Jan 2018. 2) No production from Guda for Jan 2018 due to non-availability of tankers. 3) Around 85 oil wells are closed due to various reasons like high water cut, require WOJ, etc. 4) Underperformance vis-à-vis MC approved profile in Bhagyam field. **(CEIL)**

- Full-fledged production from field is yet to be realized owing to delay in drilling of development wells as per plan in CY-ONN-2002/2. **(ONGC)**
- Production lower due to compressor unscheduled maintenance and closure of re-perforation wells and PC-14H underperformance in Panna-Mukta. **(SHELL)**

## Natural Gas

2. **Natural gas production** during January, 2018 was 2695.08 MMSCM which is 11.55% lower than the target for the month and 1.59% lower when compared with January, 2017. Cumulative natural gas production during April-January, 2017-18 was 27382.63 MMSCM which is 6.13% lower than target for the period but 2.85% higher than the production during corresponding period of last year. Unit-wise and state-wise natural gas production is given at **Annexure-II**. Unit-wise natural gas production for the month of January, 2018 and cumulatively for the period April-January, 2017-18 vis-à-vis same period of last year has been shown in Table-2 and month-wise in Figure-2.

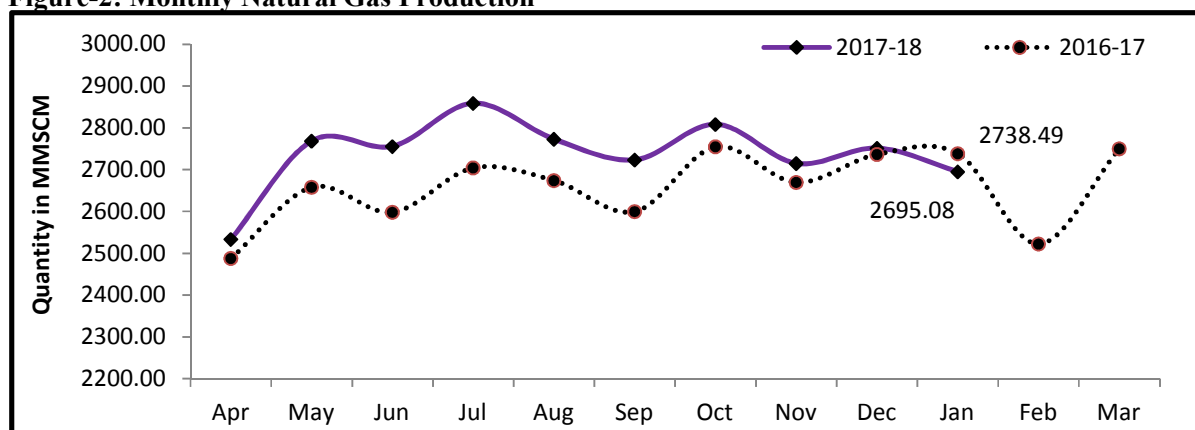
**Table-2: Natural Gas Production (MMSCM)**

Oil Company	Target	January (Month)				April-January (Cumulative)			
	2017-18 (Apr-Mar)	2017-18		2016-17	% over last year	2017-18		2016-17	% over last year
		Target	Prod.*	Prod.		Target	Prod.*	Prod.	
ONGC	24208.00	2125.25	1964.67	1922.27	102.21	20027.62	19615.84	18342.55	106.94
OIL	3000.00	247.51	238.46	248.79	95.85	2507.18	2435.44	2460.35	98.99
PSC Fields	8034.00	674.35	491.95	567.43	86.70	6636.68	5331.35	5820.97	91.59
<b>Total</b>	<b>35242.00</b>	<b>3047.10</b>	<b>2695.08</b>	<b>2738.49</b>	<b>98.41</b>	<b>29171.48</b>	<b>27382.63</b>	<b>26623.88</b>	<b>102.85</b>

Note: Totals may not tally due to rounding off.

\*: Provisional

**Figure-2: Monthly Natural Gas Production**



2.1 Natural gas production by **ONGC** during January, 2018 was 1964.67 MMSCM which is 7.56% lower than the monthly target but 2.21% higher when compared with January, 2017. Cumulative natural gas production by ONGC during April-January, 2017-18 was 19615.84

MMSCM which is 2.06% lower than the cumulative target but 6.94% higher than the production during the corresponding period of the last year. Reasons for shortfall in production during month are as under:

- Less gas production from WO16 cluster and no production from B127 Cluster due to delay in implementation of “Conversion of Sagar Samrat to MOPU” and “Integrated Development of B 127 Cluster” Project respectively.
- BPB Process Platform Shutdown taken from 24<sup>th</sup> -31<sup>st</sup> January, 2018 for carrying out repair jobs related to HP flare line at BPB Complex under pipeline tender of Integrated Development of B127 Project.
- Delay in commencement of production planned from sub-sea wells in Eastern Offshore. Production is expected to commence from these wells from end of Feb’2018.

2.2 Natural gas production by **OIL** during January, 2018 was 238.46 MMSCM which is 3.66% lower than the monthly target and 4.15% lower than January, 2017. Cumulative natural gas production by OIL during April-January, 2017-18 was 2435.44 MMSCM which is 2.86% lower than the cumulative target and 1.01% lower than the production during the corresponding period of last year. Reasons for shortfall in production are as under:

- Shutdown of LTPS from 03.01.2018 for carrying our hydro test of the gas supply line.
- BVFCL Namrup-II plant under maintenance for CO2 compressor problem.
- Unscheduled maintenance shutdown of plants of major customers.

2.3 Natural gas production by **Pvt/JVs** during January, 2018 was 491.95 MMSCM which is 27.05% lower than the monthly target and 13.30% lower when compared with January, 2017. Cumulative natural gas production by Pvt/JVs during April-January, 2017-18 was 5331.35 MMSCM which is 19.67% lower than the cumulative target and 8.41% lower than the production during the corresponding period of last year. Reasons for shortfall in production are as under:

- Underperformance of KG-OSN-2001/3. (**ONGC**)
- KG-DWN-98/3: Well A5 ceased on 24.01.2018 due to high water production. (**RIL**)
- Raniganj East CBM block: Some wells closed for planned maintenance and refrac jobs. Major customer 'Matix' under operational shutdown (ESSAR).
- Sohagpur West CBM Block: Underperformance of CBM wells. Planned temporary shutdown in Jan’18 to complete the installation of the Mercury Removal Unit (MRU) at Shabdol. (**RIL**)
- RJ-ON/6: Consumer plant shut-down for yearly maintenance. (**FEL**)
- Panna-Mukta: Production lower due to compressor unscheduled maintenance and closure of re-perforation wells and PC-14H underperformance. (**SHELL**)

### 3. Refinery Production (in terms of crude oil processed)

**Refinery production** during January, 2018 was 22769.79 TMT which is 3.89% higher than the target for the month and 7.87% higher when compared with January, 2017. Cumulative production during April-January, 2017-18 was 210733.65 TMT which is 3.35% higher than the target for the period and 2.80% higher than the production during corresponding period of last year. Unit-wise production is given at **Annexure-III**. Company-wise production for the month of January, 2018 and cumulatively for the period April-January, 2017-18 vis-à-vis same period of last year has been shown in Table-3 and month-wise in Figure-3.

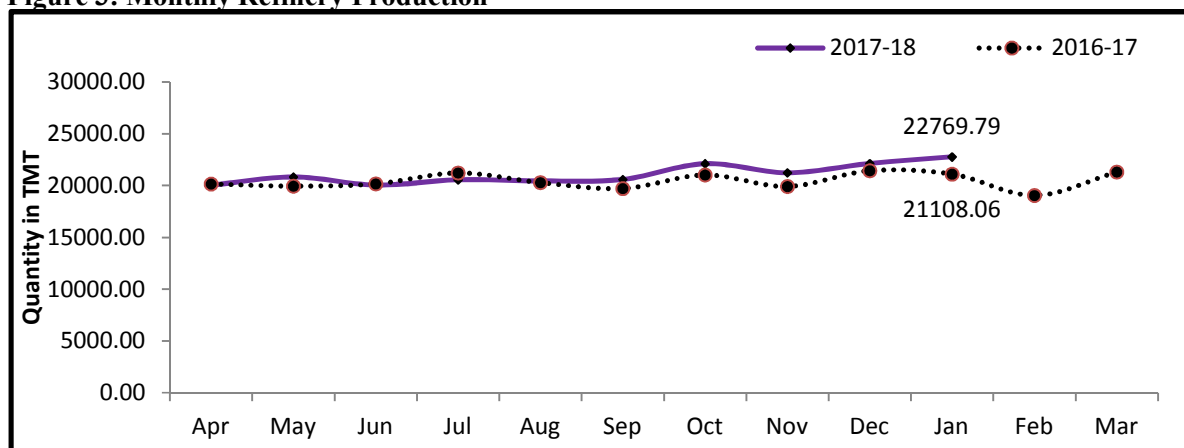
**Table 3: Refinery Production (TMT)**

Oil Company	Target	January (Month)				April-January (Cumulative)			
	2017-18 (Apr-Mar)	2017-18		2016-17	% over last year	2017-18		2016-17	% over last year
		Target	Prod.*	Prod.		Target	Prod.*	Prod.	
<b>CPSE</b>	<b>140322</b>	<b>12716.03</b>	<b>13160.93</b>	<b>11760.82</b>	<b>111.90</b>	<b>115906.51</b>	<b>121220.36</b>	<b>114521.67</b>	<b>105.85</b>
IOCL	66290	6062.23	6208.92	5470.07	113.51	54561.41	58057.88	53574.03	108.37
BPCL	27000	2475.00	2677.78	2197.16	121.87	22200.00	23118.89	21536.14	107.35
HPCL	18000	1554.27	1571.21	1572.11	99.94	15101.91	15217.43	14767.94	103.04
CPCL	10300	942.47	970.22	861.78	112.58	8509.18	8946.37	9032.18	99.05
NRL	2670	226.65	250.70	282.93	88.61	2238.03	2385.84	2243.50	106.34
MRPL	16000	1450.00	1475.36	1369.06	107.76	13245.00	13427.09	13296.67	100.98
ONGC	62	5.41	6.74	7.70	87.50	50.98	66.86	71.22	93.88
<b>JVs</b>	<b>15201</b>	<b>1468.00</b>	<b>1615.36</b>	<b>1519.98</b>	<b>106.28</b>	<b>12356.00</b>	<b>12557.81</b>	<b>14217.87</b>	<b>88.32</b>
BORL	6000	525.00	600.20	582.81	102.98	4950.00	5638.02	5260.73	107.17
HMEL	9201	943.00	1015.17	937.17	108.32	7406.00	6919.80	8957.14	77.25
<b>Private</b>	<b>90480</b>	<b>7732.91</b>	<b>7993.50</b>	<b>7827.26</b>	<b>102.12</b>	<b>75647.28</b>	<b>76955.48</b>	<b>76259.62</b>	<b>100.91</b>
RIL	70174	6055.06	6223.23	6055.06	102.78	58696.89	59642.20	58696.89	101.61
EOL	20306	1677.85	1770.27	1772.19	99.89	16950.39	17313.28	17562.73	98.58
<b>TOTAL</b>	<b>246002</b>	<b>21916.94</b>	<b>22769.79</b>	<b>21108.06</b>	<b>107.87</b>	<b>203909.78</b>	<b>210733.65</b>	<b>204999.17</b>	<b>102.80</b>

Note: Totals may not tally due to rounding off.

\*: Provisional

**Figure 3: Monthly Refinery Production**



- 3.1 **CPSE Refineries' production** during January, 2018 was 13160.93 TMT which is 3.5% higher than the target for the month and 11.9% when compared with January, 2017. Cumulative production by CPSE refineries during April-January, 2017-18 was 121220.34 TMT which is 4.58% higher than the target for the period and 5.16% higher than the production during corresponding period of last year.
- 3.2 **Production in JV refineries** during January, 2018 was 1615.36 TMT which is 10.04% higher than the target for the month and 6.28% higher when compared with January, 2017. Cumulative production by JVs refineries during April-January, 2017-18 was 12557.81 TMT which is 1.63% lower than the target for the period but 11.68% lower than the production during corresponding period of last year.
- 3.3 **Production in private refineries** during January, 2018 was 7993.50 TMT which is higher 3.37% than the target for the month and 2.12% higher when compared with January, 2017. Cumulative production by private refineries during April-January, 2017-18 was 76955.48 TMT which is 1.73% higher than the target for the period and marginally higher by 0.91% than the production during corresponding period of last year.
- 3.4 Refinery-wise details of the capacity utilization and production of petroleum products during the month of January, 2018 and cumulatively for the period April-January, 2017-18 vis-à-vis April-January, 2016-17 are given at **Annexures - IV and V** respectively.

\*\*\*\*\*

MINISTRY OF PETROLEUM & NATURAL GAS

Annexure-I

Crude Oil Production during the month of January, 2018 and cumulatively for the period April-January, 2017-18 vis-à-vis April-January, 2016-17

(Para 1)

(Qty: '000' Tonnes)

Name of Undertaking/Unit/State	Planned production during the month	Production during the			Cumulative Production			% variation over last year		% variation during the month under review over planned production
		Month under review *	Corresponding month of last year **	Preceding month of current year **	(April-January)			During the month under review	Upto the end of the period	
					Planned production during current year	Actual production during current year *	Actual production during corresponding period of last year **			
(1)	(2)	(3)	(4)	(5)	(6)	(7)	(8)	(9)	(10)	(11)
<b>1. ONGC</b>	<b>1942.588</b>	<b>1836.789</b>	<b>1916.362</b>	<b>1862.075</b>	<b>19272.914</b>	<b>18685.488</b>	<b>18545.456</b>	<b>-4.15</b>	<b>0.76</b>	<b>-5.45</b>
<b>Onshore</b>	<b>519.107</b>	<b>506.885</b>	<b>511.256</b>	<b>508.623</b>	<b>5086.226</b>	<b>5031.320</b>	<b>4954.347</b>	<b>-0.85</b>	<b>1.55</b>	<b>-2.35</b>
Andhra Pradesh	27.067	23.596	23.213	27.077	265.702	272.544	226.371	1.65	20.40	-12.82
Assam ^	87.020	81.051	81.741	83.359	846.358	816.527	797.585	-0.84	2.37	-6.86
Gujarat	383.782	380.163	385.014	376.837	3765.720	3723.651	3736.024	-1.26	-0.33	-0.94
Tamil Nadu	21.239	22.075	21.288	21.350	208.445	218.598	194.367	3.70	12.47	3.94
<b>Offshore</b>	<b>1423.480</b>	<b>1329.904</b>	<b>1405.106</b>	<b>1353.452</b>	<b>14186.689</b>	<b>13654.168</b>	<b>13591.109</b>	<b>-5.35</b>	<b>0.46</b>	<b>-6.57</b>
Eastern Offshore	5.906	0.604	1.626	0.648	63.051	6.952	13.214	-62.85	-47.39	-89.77
Western Offshore	1280.861	1211.948	1290.077	1232.742	12778.403	12449.583	12446.722	-6.06	0.02	-5.38
Condensates	136.713	117.352	113.403	120.062	1345.235	1197.633	1131.173	3.48	5.88	-14.16
<b>2. OIL (Onshore)</b>	<b>317.029</b>	<b>285.403</b>	<b>274.056</b>	<b>288.380</b>	<b>3130.029</b>	<b>2833.820</b>	<b>2704.513</b>	<b>4.14</b>	<b>4.78</b>	<b>-9.98</b>
Assam	316.497	284.694	273.415	287.654	3124.428	2826.655	2698.075	4.13	4.77	-10.05
Arunachal Pradesh	0.532	0.592	0.641	0.613	5.601	6.239	6.438	-7.64	-3.09	11.28
Rajasthan (Heavy Oil)	-	0.117	0.000	0.113	-	0.926	0.000	-	-	-
<b>3. DGH (Private / JVC)</b>	<b>902.888</b>	<b>854.213</b>	<b>885.099</b>	<b>840.605</b>	<b>8912.152</b>	<b>8391.496</b>	<b>8870.887</b>	<b>-3.49</b>	<b>-5.40</b>	<b>-5.39</b>
<b>Onshore</b>	<b>749.481</b>	<b>699.461</b>	<b>702.536</b>	<b>691.062</b>	<b>7397.840</b>	<b>6801.942</b>	<b>7063.876</b>	<b>-0.44</b>	<b>-3.71</b>	<b>-6.67</b>
Arunachal Pradesh	4.419	3.517	3.884	3.612	43.624	36.580	40.072	-9.45	-8.71	-20.42
Assam	0.856	0.515	0.000	0.468	8.447	1.664	0.000	-	-	-39.82
Gujarat	16.820	12.517	11.037	12.143	165.742	115.762	115.006	13.41	0.66	-25.58
Rajasthan	716.706	676.064	682.151	667.768	7074.616	6577.620	6873.884	-0.89	-4.31	-5.67
Tamil Nadu	10.679	6.848	5.464	7.071	105.411	70.316	34.914	25.33	101.40	-35.87
<b>Offshore</b>	<b>153.408</b>	<b>154.752</b>	<b>182.563</b>	<b>149.543</b>	<b>1514.312</b>	<b>1589.554</b>	<b>1807.011</b>	<b>-15.23</b>	<b>-12.03</b>	<b>0.88</b>
Eastern Offshore	67.520	66.555	81.830	63.816	666.520	696.132	809.308	-18.67	-13.98	-1.43
Gujarat Offshore	25.709	31.554	32.558	30.981	253.773	316.563	322.064	-3.08	-1.71	22.74
Western Offshore	60.178	56.643	68.175	54.746	594.019	576.859	675.639	-16.92	-14.62	-5.87
<b>GRAND TOTAL (1+2+3)</b>	<b>3162.505</b>	<b>2976.405</b>	<b>3075.517</b>	<b>2991.060</b>	<b>31315.096</b>	<b>29910.804</b>	<b>30120.856</b>	<b>-3.22</b>	<b>-0.70</b>	<b>-5.88</b>
Onshore	1585.617	1491.749	1487.848	1488.065	15614.095	4543.706	14722.736	0.26	-69.14	-5.92
Offshore	1576.888	1484.656	1587.669	1502.995	15701.001	4614.199	15398.120	-6.49	-70.03	-5.85

Note: Totals may not tally due to rounding off figures.

^: Includes crude oil production of Tripura

\*: Provisional. \*\*: Revised

Reasons for shortfall are indicated in the note.

MINISTRY OF PETROLEUM & NATURAL GAS

Annexure-II

Natural Gas Production during the month of January, 2018 and cumulatively for the period April-January, 2017-18 vis-à-vis April-January, 2016-17

(Para 2)

(Qty: Million Cubic Meters)

Name of Undertaking/Unit/State	Planned production during the month	Production during the			Cumulative Production (April-January)			% variation over last year		% variation during the month under review over planned production
		Month under review *	Corresponding month of last year **	Preceding month of current year **	Planned production during current year	Actual production during current year *	Actual production during corresponding period of last year **	During the month under review	Upto the end of the period	
(1)	(2)	(3)	(4)	(5)	(6)	(7)	(8)	(9)	(10)	(11)
<b>1. ONGC</b>	<b>2125.250</b>	<b>1964.669</b>	<b>1922.268</b>	<b>2000.791</b>	<b>20027.620</b>	<b>19615.836</b>	<b>18342.553</b>	<b>2.21</b>	<b>6.94</b>	<b>-7.56</b>
<b>Onshore</b>	<b>449.886</b>	<b>479.921</b>	<b>461.308</b>	<b>476.501</b>	<b>4527.723</b>	<b>4710.577</b>	<b>4280.668</b>	<b>4.03</b>	<b>10.04</b>	<b>6.68</b>
Andhra Pradesh	82.935	84.266	79.237	82.871	800.308	773.819	715.456	6.35	8.16	1.61
Assam	37.740	42.991	36.387	41.954	368.927	426.259	359.318	18.15	18.63	13.91
Gujarat	113.491	124.988	136.554	127.352	1156.529	1306.932	1219.631	-8.47	7.16	10.13
Rajasthan	0.425	0.607	0.854	0.432	4.192	4.145	3.783	-28.92	9.57	42.82
Tamil Nadu	91.571	102.200	88.273	100.996	948.559	997.274	810.182	15.78	23.09	11.61
Tripura	123.724	124.869	120.003	122.896	1249.209	1202.148	1172.298	4.05	2.55	0.93
<b>Offshore</b>	<b>1675.364</b>	<b>1484.748</b>	<b>1460.960</b>	<b>1524.290</b>	<b>15499.896</b>	<b>14905.259</b>	<b>14061.885</b>	<b>1.63</b>	<b>6.00</b>	<b>-11.38</b>
Eastern Offshore	180.546	42.799	57.043	41.888	789.746	467.930	363.524	-24.97	28.72	-76.29
Western Offshore	1494.818	1441.949	1403.917	1482.402	14710.150	14437.329	13698.361	2.71	5.39	-3.54
<b>2. OIL</b>	<b>247.508</b>	<b>238.460</b>	<b>248.793</b>	<b>236.974</b>	<b>2507.180</b>	<b>2435.442</b>	<b>2460.352</b>	<b>-4.15</b>	<b>-1.01</b>	<b>-3.66</b>
Assam	228.923	217.471	229.214	216.433	2289.370	2248.627	2253.544	-5.12	-0.22	-5.00
Arunachal Pradesh	1.085	0.966	1.005	0.962	10.710	9.712	9.948	-3.88	-2.37	-10.97
Rajasthan	17.500	20.023	18.574	19.579	207.100	177.103	196.860	7.80	-10.04	14.42
<b>3. DGH (Private / JVC)</b>	<b>674.346</b>	<b>491.951</b>	<b>567.428</b>	<b>513.593</b>	<b>6636.678</b>	<b>5331.347</b>	<b>5820.972</b>	<b>-13.30</b>	<b>-8.41</b>	<b>-27.05</b>
<b>Onshore</b>	<b>122.550</b>	<b>110.849</b>	<b>89.328</b>	<b>120.120</b>	<b>1224.391</b>	<b>1129.498</b>	<b>971.037</b>	<b>24.09</b>	<b>16.32</b>	<b>-9.55</b>
Arunachal Pradesh	19.364	2.078	1.502	1.693	191.145	13.974	12.903	38.35	8.30	-89.27
Assam	0.747	8.149	0.000	7.691	7.234	31.672	0.000	-	-	990.90
Gujarat	3.925	5.768	7.206	5.999	53.588	64.226	75.441	-19.96	-14.87	46.96
Rajasthan	97.149	93.644	79.929	103.532	958.954	1008.375	878.521	17.16	14.78	-3.61
Tamil Nadu	1.365	1.210	0.691	1.205	13.470	11.251	4.172	75.11	169.68	-11.33
<b>CBM</b>	<b>116.581</b>	<b>60.924</b>	<b>53.583</b>	<b>70.797</b>	<b>1111.047</b>	<b>601.799</b>	<b>474.229</b>	<b>13.70</b>	<b>26.90</b>	<b>-47.74</b>
Jharkhand (CBM)	0.305	0.341	0.322	0.370	3.010	3.524	2.503	5.90	40.79	11.80
Madhya Pradesh (CBM)	39.918	17.453	0.783	26.127	394.027	141.236	4.761	2128.99	2866.52	-56.28
West Bengal (CBM)	76.359	43.130	52.478	44.300	714.010	457.039	466.965	-17.81	-2.13	-43.52
<b>Offshore</b>	<b>435.215</b>	<b>320.178</b>	<b>424.517</b>	<b>322.676</b>	<b>4301.239</b>	<b>3600.050</b>	<b>4375.706</b>	<b>-24.58</b>	<b>-17.73</b>	<b>-26.43</b>
Eastern Offshore	278.275	166.729	252.073	177.703	2746.844	1965.309	2711.483	-33.86	-27.52	-40.08
Gujarat Offshore	3.026	7.030	7.162	8.695	35.119	84.408	69.274	-1.84	21.85	132.31
Western Offshore	153.914	146.419	165.282	136.278	1519.277	1550.333	1594.949	-11.41	-2.80	-4.87
<b>TOTAL (1+2+3)</b>	<b>3047.104</b>	<b>2695.080</b>	<b>2738.489</b>	<b>2751.358</b>	<b>29171.477</b>	<b>27382.625</b>	<b>26623.877</b>	<b>-1.59</b>	<b>2.85</b>	<b>-11.55</b>
CBM	116.581	60.924	53.583	70.797	1111.047	601.799	474.229	13.70	26.90	-47.74
Onshore	819.944	829.230	799.429	833.595	8259.294	8275.517	7712.057	3.73	7.31	1.13
Offshore	2110.579	1804.926	1885.477	1846.966	19801.136	18505.309	18437.591	-4.27	0.37	-14.48

Note: Totals may not tally due to rounding off figures.

\*: Provisional.

\*\* : Revised

CBM: Coal Bed Methane production.

Reasons for shortfall are indicated in the note.



MINISTRY OF PETROLEUM & NATURAL GAS

Annexure-III

Refinery Production (in terms of crude oil processed) during the month of January, 2018 and cumulatively for the period April-January, 2017-18 vis-à-vis April-January, 2016-17

(Para 3)

(Qty: '000' Tonnes)

Name of Undertaking/Unit	Planned production during the month	Production during the			Cumulative Production			% variation over last year		% variation during the month under review over planned production
		Month under review *	Corresponding month of last year	Preceding month of current year **	(April-January)			During the month under	Upto the end of the period	
					Planned production during current year	Actual production during current year *	Actual production during corresponding period of last year **			
(1)	(2)	(3)	(4)	(5)	(6)	(7)	(8)	(9)	(10)	(11)
<b>A. Public Sector</b>	<b>12716.033</b>	<b>13160.929</b>	<b>11760.822</b>	<b>12793.629</b>	<b>115906.506</b>	<b>121220.355</b>	<b>114521.673</b>	<b>11.90</b>	<b>5.85</b>	<b>3.50</b>
1. IOC, Guwahati	72.192	85.876	65.235	92.350	712.603	859.302	717.040	31.64	19.84	18.96
2. IOC, Barauni	554.697	596.860	554.047	610.057	4694.287	4766.140	5481.091	7.73	-13.04	7.60
3. IOC, Gujarat	1209.001	1279.221	1007.133	1288.821	10458.968	11395.092	11731.469	27.02	-2.87	5.81
4. IOC, Haldia	665.000	709.346	550.093	179.705	6125.000	6306.859	6349.110	28.95	-0.67	6.67
5. IOC, Mathura	680.003	830.037	786.215	881.406	7049.997	7630.480	7678.684	5.57	-0.63	22.06
6. IOC, Digboi	43.000	57.688	44.508	51.120	420.000	554.908	438.026	29.61	26.68	34.16
7. IOC, Panipat	1348.100	1364.906	1330.366	1366.788	12637.366	12985.998	12996.039	2.60	-0.08	1.25
8. IOC, Bongaigaon	203.094	204.628	206.369	253.999	1913.465	1972.750	2086.577	-0.84	-5.46	0.76
9. IOC, Paradip	1287.145	1080.356	926.100	1261.648	10549.724	11586.352	6095.996	16.66	90.06	-16.07
<b>Total IOC</b>	<b>6062.231</b>	<b>6208.918</b>	<b>5470.066</b>	<b>5985.894</b>	<b>54561.411</b>	<b>58057.881</b>	<b>53574.032</b>	<b>13.51</b>	<b>8.37</b>	<b>2.42</b>
10. BPCL, Mumbai	1200.000	1312.689	1137.954	1316.918	10935.000	11589.575	11934.601	15.36	-2.89	9.39
11. BPCL, Kochi	1275.000	1365.094	1059.207	1210.988	11265.000	11529.311	9601.538	28.88	20.08	7.07
<b>Total BPCL</b>	<b>2475.000</b>	<b>2677.783</b>	<b>2197.161</b>	<b>2527.906</b>	<b>22200.000</b>	<b>23118.886</b>	<b>21536.139</b>	<b>21.87</b>	<b>7.35</b>	<b>8.19</b>
12. HPCL, Mumbai	722.767	746.611	753.532	759.124	7134.410	7215.220	7066.319	-0.92	2.11	3.30
13. HPCL, Visakh	831.505	824.597	818.578	809.018	7967.497	8002.206	7701.619	0.74	3.90	-0.83
<b>Total HPCL</b>	<b>1554.272</b>	<b>1571.208</b>	<b>1572.110</b>	<b>1568.142</b>	<b>15101.907</b>	<b>15217.426</b>	<b>14767.938</b>	<b>-0.06</b>	<b>3.04</b>	<b>1.09</b>
14. CPCL, Manali	900.000	917.272	820.377	895.362	8090.000	8530.230	8589.798	11.81	-0.69	1.92
15. CPCL, CBR	42.466	52.950	41.407	50.071	419.178	416.139	442.377	27.88	-5.93	24.69
<b>Total CPCL</b>	<b>942.466</b>	<b>970.222</b>	<b>861.784</b>	<b>945.433</b>	<b>8509.178</b>	<b>8946.369</b>	<b>9032.175</b>	<b>12.58</b>	<b>-0.95</b>	<b>2.95</b>
16. NRL, Numaligarh	226.652	250.703	282.934	241.549	2238.026	2385.837	2243.497	-11.39	6.34	10.61
17. MRPL, Mangalore	1450.000	1475.355	1369.064	1517.435	13245.000	13427.092	13296.668	7.76	0.98	1.75
18. ONGC, Tatipaka	5.412	6.740	7.703	7.270	50.984	66.864	71.225	-12.50	-6.12	24.54
<b>B. Joint Venture</b>	<b>1468.000</b>	<b>1615.363</b>	<b>1519.979</b>	<b>1625.045</b>	<b>12356.000</b>	<b>12557.813</b>	<b>14217.874</b>	<b>6.28</b>	<b>-11.68</b>	<b>10.04</b>
19. BORL, Bina	525.000	600.197	582.805	623.952	4950.000	5638.016	5260.732	2.98	7.17	14.32
20. HMEL, GGSR, Bhatinda	943.000	1015.166	937.174	1001.093	7406.000	6919.797	8957.142	8.32	-22.75	7.65
<b>C. Private Sector</b>	<b>7732.911</b>	<b>7993.499</b>	<b>7827.257</b>	<b>7710.459</b>	<b>75647.276</b>	<b>76955.477</b>	<b>76259.618</b>	<b>2.12</b>	<b>0.91</b>	<b>3.37</b>
21. RIL, Jamnagar	2774.605	2929.073	2774.605	2661.358	27533.526	27651.017	27533.526	5.57	0.43	5.57
22. RIL, SEZ	3280.459	3294.159	3280.459	3280.312	31163.364	31991.182	31163.364	0.42	2.66	0.42
<b>Total RIL</b>	<b>6055.064</b>	<b>6223.232</b>	<b>6055.064</b>	<b>5941.670</b>	<b>58696.890</b>	<b>59642.199</b>	<b>58696.890</b>	<b>2.78</b>	<b>1.61</b>	<b>2.78</b>
23. EOL, Vadinar	1677.847	1770.267	1772.193	1768.789	16950.387	17313.278	17562.728	-0.11	-1.42	5.51
<b>TOTAL(A+B+C)</b>	<b>21916.944</b>	<b>22769.791</b>	<b>21108.058</b>	<b>22129.133</b>	<b>203909.782</b>	<b>210733.645</b>	<b>204999.165</b>	<b>7.87</b>	<b>2.80</b>	<b>3.89</b>

Note: 1. Totals may not tally due to rounding off figures.

\*: Provisional. \*\*: Revised

2. Target for the year 2017-18 (Month-wise) reconciled.

MINISTRY OF PETROLEUM & NATURAL GAS

Annexure-IV

Refinery-wise Capacity Utilisation during the month of January, 2018 and cumulatively for the period April-January, 2017-18 vis-à-vis April-January, 2016-17 (Para 3.4)

(Qty: '000' Tonnes)

Name of Undertaking/Unit	January, 2018			January, 2017			Cumulative (April - January)					
	Prorated Installed Capacity	Actual Crude T'put *	% Utilisation of Installed Capacity	Prorated Installed Capacity	Actual Crude T'put	% Utilisation of Installed Capacity	2017-18			2016-17		
							Prorated Installed Capacity	Actual Crude T'put *	% Utilisation of Installed Capacity	Prorated Installed Capacity	Actual Crude T'put **	% Utilisation of Installed Capacity
(1)	(2)	(3)	(4)	(5)	(6)	(7)	(8)	(9)	(10)	(11)	(12)	(13)
<b>A. Public Sector</b>	<b>12066.00</b>	<b>13160.93</b>	<b>109.07</b>	<b>11440.00</b>	<b>11760.82</b>	<b>102.80</b>	<b>119102.00</b>	<b>121220.36</b>	<b>101.78</b>	<b>113233.00</b>	<b>114521.67</b>	<b>101.14</b>
1. IOC, Guwahati	85.00	85.88	101.03	85.00	65.24	76.75	838.00	859.30	102.54	838.00	717.04	85.57
2. IOC, Barauni	510.00	596.86	117.03	508.00	554.05	109.06	5030.00	4766.14	94.75	5030.00	5481.09	108.97
3. IOC, Gujarat	1164.00	1279.22	109.90	1160.00	1007.13	86.82	11485.00	11395.09	99.22	11485.00	11731.47	102.15
4. IOC, Haldia	637.00	709.35	111.36	635.00	550.09	86.63	6288.00	6306.86	100.30	6288.00	6349.11	100.97
5. IOC, Mathura	679.00	830.04	122.24	678.00	786.22	115.96	6707.00	7630.48	113.77	6707.00	7678.68	114.49
6. IOC, Digboi	55.00	57.69	104.89	55.00	44.51	80.92	545.00	554.91	101.82	545.00	438.03	80.37
7. IOC, Panipat	1274.00	1364.91	107.14	1270.00	1330.37	104.75	12575.00	12986.00	103.27	12575.00	12996.04	103.35
8. IOC, Bongaigaon	200.00	204.63	102.31	199.00	206.37	103.70	1970.00	1972.75	100.14	1970.00	2086.58	105.92
9. IOC, Paradip	1274.00	1080.36	84.80	1270.00	926.10	0.00	12575.00	11586.35	92.14	12575.00	6096.00	0.00
<b>Total IOC</b>	<b>5877.00</b>	<b>6208.92</b>	<b>105.65</b>	<b>5861.00</b>	<b>5470.07</b>	<b>93.33</b>	<b>58014.00</b>	<b>58057.88</b>	<b>100.08</b>	<b>58014.00</b>	<b>53574.03</b>	<b>92.35</b>
10. BPCL, Mumbai	1019.00	1312.69	128.82	1016.00	1137.95	112.00	10060.00	11589.58	115.20	10060.00	11934.60	118.63
11. BPCL, Kochi	1316.00	1365.09	103.73	805.00	1059.21	131.58	12995.00	11529.31	88.72	7964.00	9601.54	120.56
<b>Total BPCL</b>	<b>2336.00</b>	<b>2677.78</b>	<b>114.63</b>	<b>1821.00</b>	<b>2197.16</b>	<b>120.66</b>	<b>23055.00</b>	<b>23118.89</b>	<b>100.28</b>	<b>18025.00</b>	<b>21536.14</b>	<b>119.48</b>
12. HPCL, Mumbai	637.00	746.61	117.21	551.00	753.53	136.76	6288.00	7215.22	114.75	5449.00	7066.32	129.68
13. HPCL, Visakh	705.00	824.60	116.96	703.00	818.58	116.44	6958.00	8002.21	115.01	6958.00	7701.62	110.69
<b>Total HPCL</b>	<b>1342.00</b>	<b>1571.21</b>	<b>117.08</b>	<b>1254.00</b>	<b>1572.11</b>	<b>125.37</b>	<b>13246.00</b>	<b>15217.43</b>	<b>114.88</b>	<b>12408.00</b>	<b>14767.94</b>	<b>119.02</b>
14. CPCL, Manali	892.00	917.27	102.83	889.00	820.38	92.28	8803.00	8530.23	96.90	8803.00	8589.80	97.58
15. CPCL, CBR	85.00	52.95	62.29	85.00	41.41	48.71	838.00	416.14	49.66	838.00	442.38	52.79
<b>Total CPCL</b>	<b>977.00</b>	<b>970.22</b>	<b>99.31</b>	<b>974.00</b>	<b>861.78</b>	<b>88.48</b>	<b>9641.00</b>	<b>8946.37</b>	<b>92.80</b>	<b>9641.00</b>	<b>9032.18</b>	<b>93.69</b>
16. NRL, Numaligarh	255.00	250.70	98.31	254.00	282.93	111.39	2515.00	2385.84	94.86	2515.00	2243.50	89.20
17. MRPL, Mangalore	1274.00	1475.36	115.80	1270.00	1369.06	107.80	12575.00	13427.09	106.78	12575.00	13296.67	105.74
18. ONGC, Tatipaka	6.00	6.74	112.33	6.00	7.70	128.38	55.00	66.86	121.57	55.00	71.22	129.50
<b>B. Joint Venture</b>	<b>1469.00</b>	<b>1615.36</b>	<b>109.96</b>	<b>1270.00</b>	<b>1519.98</b>	<b>119.68</b>	<b>14504.00</b>	<b>12557.81</b>	<b>86.58</b>	<b>12575.00</b>	<b>14217.87</b>	<b>113.06</b>
19. BORL, Bina	510.00	600.20	117.69	508.00	582.81	114.73	5030.00	5638.02	112.09	5030.00	5260.73	104.59
20. HMEL, GGSR, Bhatinda	960.00	1015.17	105.75	762.00	937.17	122.99	9473.00	6919.80	73.05	7545.00	8957.14	118.72
<b>C. Private Sector</b>	<b>7491.00</b>	<b>7993.50</b>	<b>106.71</b>	<b>6776.00</b>	<b>7827.26</b>	<b>115.51</b>	<b>73943.00</b>	<b>76955.48</b>	<b>104.07</b>	<b>67068.00</b>	<b>76259.62</b>	<b>113.70</b>
21. RIL, Jamnagar	2803.00	2929.07	104.50	2795.00	2774.61	99.27	27666.00	27651.02	99.95	27666.00	27533.53	99.52
22. RIL, SEZ	2990.00	3294.16	110.17	2287.00	3280.46	143.44	29510.00	31991.18	108.41	22636.00	31163.36	137.67
<b>Total RIL</b>	<b>5792.00</b>	<b>6223.23</b>	<b>107.45</b>	<b>5082.00</b>	<b>6055.06</b>	<b>119.15</b>	<b>57176.00</b>	<b>59642.20</b>	<b>104.31</b>	<b>50301.00</b>	<b>58696.89</b>	<b>116.69</b>
23. EOL, Vadinar	1699.00	1770.27	104.19	1694.00	1772.19	104.62	16767.00	17313.28	103.26	16767.00	17562.73	104.75
<b>TOTAL(A+B+C)</b>	<b>21026.00</b>	<b>22769.79</b>	<b>108.29</b>	<b>19486.00</b>	<b>21108.06</b>	<b>108.32</b>	<b>207548.00</b>	<b>210733.65</b>	<b>101.53</b>	<b>192877.00</b>	<b>204999.17</b>	<b>106.28</b>

\*: Provisional. \*\*: Revised

Note: Refinery capacity as on 01.12.2017 is 247.566 MMT

**MINISTRY OF PETROLEUM & NATURAL GAS**

**Production of Petroleum Products during the month of January, 2018 and cumulatively for the period April-January, 2017-18 vis-à-vis April-January, 2016-17**

**Annexure-V**

**(Para 3.4)**

(Qty: '000' Tonnes)

Name of Undertaking/Unit	Planned production during the month	Production during the			Cumulative Production			% variation over last year		% variation during the month under review over planned production
		Month under review *	Corresponding month of last year	Preceding month of current year **	(April-January)			During the month under review	Upto the end of the period	
					Planned production during current year	Actual production during current year*	Actual production during corresponding period of last year**			
(1)	(2)	(3)	(4)	(5)	(6)	(7)	(8)	(9)	(10)	(11)
<b>I. Refinery</b>										
<b>A. Public Sector</b>	<b>11837.426</b>	<b>12481.264</b>	<b>10916.218</b>	<b>12112.112</b>	<b>108316.402</b>	<b>114605.564</b>	<b>107400.388</b>	<b>14.34</b>	<b>6.71</b>	<b>5.44</b>
1. IOC, Guwahati	76.884	98.545	79.517	103.753	759.140	957.042	925.261	23.93	3.43	28.17
2. IOC, Barauni	521.136	572.088	481.255	576.277	4301.461	4448.523	4968.768	18.87	-10.47	9.78
3. IOC, Gujarat	1149.311	1229.174	867.623	1249.613	9940.697	10936.445	10946.367	41.67	-0.09	6.95
4. IOC, Haldia	629.572	667.966	522.294	154.527	5756.553	5883.774	5754.085	27.89	2.25	6.10
5. IOC, Mathura	614.209	837.342	761.602	835.600	6780.714	7570.530	7401.704	9.94	2.28	36.33
6. IOC, Digboi	44.083	57.870	46.892	54.727	423.759	558.730	447.963	23.41	24.73	31.28
7. IOC, Panipat	1351.521	1427.584	1349.249	1442.511	12634.408	13080.689	13103.939	5.81	-0.18	5.63
8. IOC, Bongaigaon	189.919	220.925	182.756	221.774	1759.227	1825.811	1882.821	20.89	-3.03	16.33
9. IOC, Paradip	1149.004	943.280	817.283	1151.941	9241.196	10388.766	5076.934	15.42	104.63	-17.90
<b>Total IOC</b>	<b>5725.639</b>	<b>6054.774</b>	<b>5108.471</b>	<b>5790.723</b>	<b>51597.155</b>	<b>55650.310</b>	<b>50507.842</b>	<b>18.52</b>	<b>10.18</b>	<b>5.75</b>
10. BPCL, Mumbai	1144.492	1276.597	1071.258	1268.953	10448.545	11244.718	11478.326	19.17	-2.04	11.54
11. BPCL, Kochi	1170.024	1266.483	958.898	1153.927	10457.828	10891.634	9032.018	32.08	20.59	8.24
<b>Total BPCL</b>	<b>2314.515</b>	<b>2543.080</b>	<b>2030.156</b>	<b>2422.880</b>	<b>20906.373</b>	<b>22136.352</b>	<b>20510.344</b>	<b>25.27</b>	<b>7.93</b>	<b>9.88</b>
12. HPCL, Mumbai	666.973	682.401	698.448	703.207	6583.636	6729.200	6582.862	-2.30	2.22	2.31
13. HPCL, Visakh	765.618	766.241	755.926	726.700	7321.839	7392.728	7075.631	1.36	4.48	0.08
<b>Total HPCL</b>	<b>1432.591</b>	<b>1448.642</b>	<b>1454.374</b>	<b>1429.907</b>	<b>13905.474</b>	<b>14121.928</b>	<b>13658.493</b>	<b>-0.39</b>	<b>3.39</b>	<b>1.12</b>
14. CPCL, Manali	812.724	805.218	673.819	815.009	7305.253	7727.784	7841.125	19.50	-1.45	-0.92
15. CPCL, CBR	42.672	52.895	41.396	50.143	421.210	418.676	443.833	27.78	-5.67	23.96
<b>Total CPCL</b>	<b>855.396</b>	<b>858.113</b>	<b>715.215</b>	<b>865.152</b>	<b>7726.463</b>	<b>8146.460</b>	<b>8284.958</b>	<b>19.98</b>	<b>-1.67</b>	<b>0.32</b>
16. NRL, Numaligarh	226.283	251.290	283.699	239.619	2234.265	2396.799	2230.498	-11.42	7.46	11.05
17. MRPL, Mangalore	1277.721	1319.078	1316.861	1356.956	11896.932	12090.531	12140.053	0.17	-0.41	3.24
18. ONGC, Tatipaka	5.280	6.287	7.442	6.875	49.740	63.184	68.199	-15.52	-7.35	19.07
<b>B. Joint Venture</b>	<b>1368.950</b>	<b>1555.676</b>	<b>1364.452</b>	<b>1526.433</b>	<b>11487.850</b>	<b>11719.884</b>	<b>13182.048</b>	<b>14.01</b>	<b>-11.09</b>	<b>13.64</b>
19. BORL, Bina	474.450	550.082	549.253	563.416	4465.550	5139.012	4777.745	0.15	7.56	15.94
20. HMEL, GGSR, Bhatinda	894.500	1005.594	815.199	963.017	7022.300	6580.872	8404.303	23.36	-21.70	12.42
<b>C. Private Sector</b>	<b>8024.482</b>	<b>8510.219</b>	<b>7991.632</b>	<b>8500.295</b>	<b>78132.597</b>	<b>81731.448</b>	<b>78576.911</b>	<b>6.49</b>	<b>4.01</b>	<b>6.05</b>
21. RIL, Jamnagar	2900.119	2892.941	2900.119	2861.021	27678.687	27836.713	27678.687	-0.25	0.57	-0.25
22. RIL, SEZ	3508.030	3972.476	3508.030	3961.319	34143.577	37376.340	34143.577	13.24	9.47	13.24
<b>Total RIL</b>	<b>6408.149</b>	<b>6865.417</b>	<b>6408.149</b>	<b>6822.340</b>	<b>61822.264</b>	<b>65213.053</b>	<b>61822.264</b>	<b>7.14</b>	<b>5.48</b>	<b>7.14</b>
23. EOL, Vadinar	1616.333	1644.802	1583.483	1677.955	16310.333	16518.395	16754.647	3.87	-1.41	1.76
<b>TOTAL(A+B+C)</b>	<b>21230.858</b>	<b>22547.159</b>	<b>20272.302</b>	<b>22138.840</b>	<b>197936.849</b>	<b>208056.896</b>	<b>199159.346</b>	<b>11.22</b>	<b>4.47</b>	<b>6.20</b>
<b>II. Fractionators</b>										
ONGC	272.671	277.391	288.359	292.645	2712.821	2723.595	2611.267	-3.80	4.30	1.73
OIL	3.200	3.160	3.048	3.304	25.900	27.767	28.944	3.67	-4.07	-1.25
GAIL	89.024	102.711	100.144	99.817	878.450	1057.091	931.632	2.56	13.47	15.37
<b>D. Total Fractionators</b>	<b>364.895</b>	<b>383.262</b>	<b>391.551</b>	<b>395.766</b>	<b>3617.171</b>	<b>3808.453</b>	<b>3571.843</b>	<b>-2.12</b>	<b>6.62</b>	<b>5.03</b>
<b>Grand Total (A+B+C+D)</b>	<b>21595.753</b>	<b>22930.421</b>	<b>20663.853</b>	<b>22534.606</b>	<b>201554.020</b>	<b>211865.349</b>	<b>202731.189</b>	<b>10.97</b>	<b>4.51</b>	<b>6.18</b>

Note: 1. Totals may not tally due to rounding off figures.

\*: Provisional. \*\*: Revised

2. Target for the year 2017-18 (Month-wise) reconciled.