

Government of India
Ministry of Petroleum and Natural Gas
Economic & Statistics Division

New Delhi
Dated the 22nd March, 2018

Monthly Production Report
February, 2018

Crude Oil

1. **Crude oil production¹** during February, 2018 was 2731.48 TMT which is 5.43% lower than target and 2.36% lower when compared with February 2017. Cumulative crude oil production during April-February, 2017-18 was 32642.24 TMT which is 4.56% lower than target for the period and 0.84% lower than production during corresponding period of last year. Unit-wise and State-wise crude oil production is given at **Annexure-I**. Unit-wise crude oil production for the month of February, 2018 and cumulatively for the period April-February, 2017-18 vis-à-vis same period of last year has been shown in Table-1 and month-wise in Figure-1.

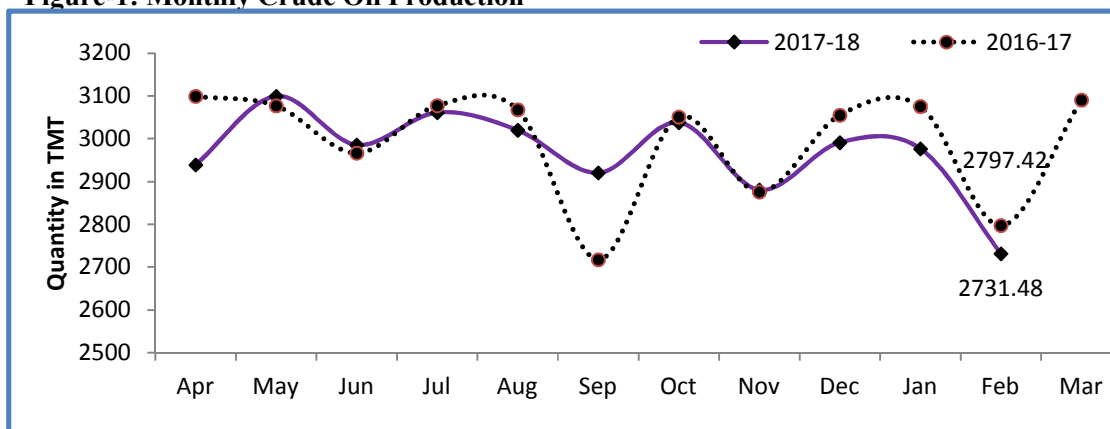
Table-1: Crude Oil Production (in TMT)

Oil Company	Target	February (Month)				April-February (Cumulative)			
	2017-18 (Apr-Mar)	2017-18		2016-17	% over last year	2017-18		2016-17	% over last year
		Target	Prod.*	Prod.		Target	Prod.*	Prod.	
ONGC	23071.00	1786.27	1684.47	1741.46	96.73	21059.19	20369.95	20286.92	100.41
OIL	3734.00	286.51	260.49	260.32	100.06	3416.54	3094.31	2964.83	104.37
PSC Fields	10562.00	815.56	786.53	795.64	98.86	9727.72	9177.98	9666.52	94.95
Total	37367.00	2888.35	2731.48	2797.42	97.64	34203.45	32642.24	32918.28	99.16

Note: Totals may not tally due to rounding off.

*: Provisional

Figure-1: Monthly Crude Oil Production



¹Including condensate

Unit-wise production details with reasons for shortfall are as under:

1.1 Crude oil production by **ONGC** during February, 2018 was 1684.47 TMT which is 5.70% lower than the monthly target and 3.27% lower when compared with February, 2017. Cumulative crude oil production by ONGC during April-February, 2017-18 was 20369.95 TMT which is 3.27% lower than target for the period but 0.41% higher than production during corresponding period of last year. Reasons for shortfall in production with respect to target are as under:

- ❖ Additional production planned from WO16 cluster from Oct'17 onwards could not be realized due to delay in implementation of "Conversion of Sagar Samrat to MOPU" Project.
- ❖ Production planned from project 'Integrated Development of B 127 Cluster' from Oct'2017 onwards could not be realized due to delay in implementation of project. Production targeted by pre-monsoon of 2018 from B-127 wells.
- ❖ Increase in water cut in wells of Heera, Neelam and B-173 fields.
- ❖ Frequent power shutdowns and low gas injection pressure in Mehsana and Assam hampered artificial lift operations.
- ❖ Increase in water cut in Mehsana and Assam.

1.2 Crude oil production by **OIL** during February, 2018 was 260.49 TMT which is 9.08% lower than monthly target but marginally higher by 0.06% than production in February, 2017. Cumulative crude oil production by OIL during April-February, 2017-18 was 3094.31 TMT which is 9.43% lower than target for the period but 4.37% higher than production during the corresponding period of last year. Reasons for shortfall in production are as under:

- ❖ Less than planned contribution from old wells – Rise in water cut in wells and decline in total liquid production of wells of Greater Hapjan and Greater Chandmari Fields.
- ❖ Less than planned contribution from work over wells.

1.3 Crude oil production by **Pvt/JVs** during February, 2018 was 786.53 TMT which is 3.56% lower than the monthly target and 1.14% lower than February, 2017. Cumulative crude oil production by Pvt/JVs during April-February, 2017-18 was 9177.98 TMT which is 5.65% lower than target for the period and 5.05% lower than the production during the corresponding period of last year. Reasons for shortfall in production are as under:

- ❖ RJ-ON-90/1 (CIL): Around 80 oil wells closed due to various reasons like high water cut, requiring WOJ, etc. No production from Guda in Feb'18 due to non-availability of tankers. Underperformance of Bhagyam.
- ❖ Panna-Mukta (Shell): Well PC-10 underperforming after shutdown.
- ❖ CY-ONN-2002/2 (ONGC): Full fledged production yet to be realized owing to non-grant of PML.

Natural Gas

2. **Natural gas production** during February, 2018 was 2484.10 MMSCM which is 12.28% lower than the target for the month and 1.52% lower when compared with February, 2017. Cumulative natural gas production during April-February, 2017-18 was 29866.69 MMSCM which is 6.68% lower than target for the period but 2.47% higher than the production during corresponding period of last year. Unit-wise and state-wise natural gas production is given at **Annexure-II**. Unit-wise natural gas production for the month of February, 2018 and cumulatively for the period April-February, 2017-18 vis-à-vis same period of last year has been shown in Table-2 and month-wise in Figure-2.

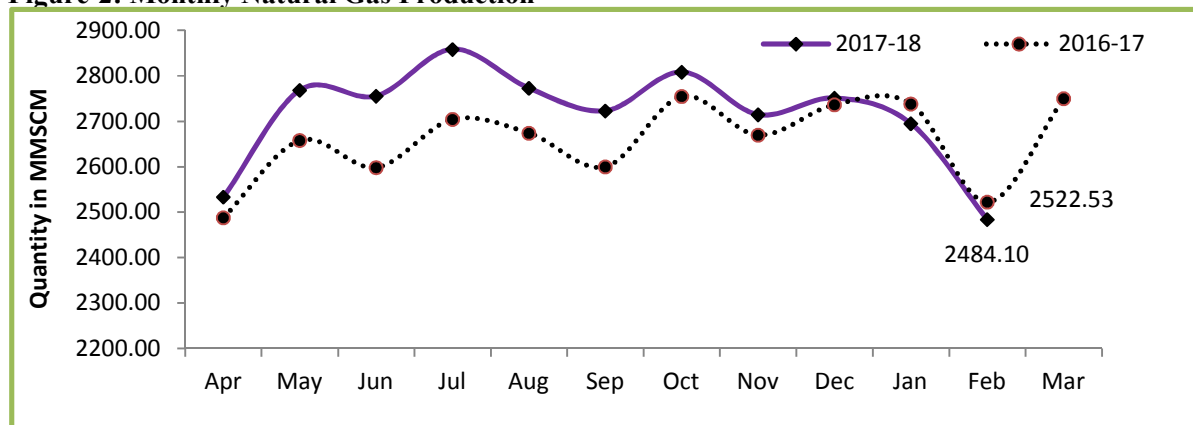
Table-2: Natural Gas Production (MMSCM)

Oil Company	Target	February (Month)				April-February (Cumulative)			
	2017-18 (Apr-Mar)	2017-18		2016-17	% over last year	2017-18		2016-17	% over last year
		Target	Prod.*	Prod.		Target	Prod.*	Prod.	
ONGC	24208.00	1975.27	1800.02	1773.11	101.52	22002.89	21415.86	20115.66	106.46
OIL	3000.00	245.01	209.33	225.18	92.96	2752.19	2644.77	2685.53	98.48
PSC Fields	8034.00	611.58	474.75	524.24	90.56	7248.25	5806.06	6345.21	91.50
Total	35242.00	2831.86	2484.10	2522.53	98.48	32003.33	29866.69	29146.41	102.47

Note: Totals may not tally due to rounding off.

*: Provisional

Figure-2: Monthly Natural Gas Production



- 2.1 Natural gas production by **ONGC** during February, 2018 was 1800.02 MMSCM which is 8.87% lower than the monthly target but 1.52% higher when compared with February, 2017. Cumulative natural gas production by ONGC during April-February, 2017-18 was 21415.86 MMSCM which is 2.67% lower than the cumulative target but 6.46% higher than the production during the corresponding period of the last year. Reasons for shortfall in production during month are as under:

- ❖ Less gas production from WO16 cluster and no production from B127 Cluster due to delay in implementation of 'Conversion of Sagar Samrat to MOPU' and 'Integrated Development of B-127 Cluster' project respectively.
- ❖ Delay in commencement of production planned from sub-sea wells in Eastern Offshore. All 3 wells of VA S1 project completed and hooked up by Feb'18 against plan of Jan'18. Commissioning activities for onshore terminal is in progress.

2.2 Natural gas production by **OIL** during February, 2018 was 209.33 MMSCM which is 14.56% lower than the monthly target and 7.04% lower than February, 2017. Cumulative natural gas production by OIL during April-February, 2017-18 was 2644.77 MMSCM which is 3.09% lower than the cumulative target and 1.52% lower than the production during the corresponding period of last year. Reasons for shortfall in production are as under:

- ❖ Outage of three high producing gas wells of Deohal and Naholia area due to surface facility modification jobs.
- ❖ Shutdown of LTPS from 3rd to 12th Feb'18 for carrying out hydro test and maintenance works of the gas supply line. NRL plant shutdown due to sudden outage of Hydrogen unit during 10th to 13th Feb'18. Loading problem of BCPL's Madhuban Compressor.

2.3 Natural gas production by **Pvt/JVs** during February, 2018 was 474.75 MMSCM which is 22.37% lower than the monthly target and 9.44% lower when compared with February, 2017. Cumulative natural gas production by Pvt/JVs during April-February, 2017-18 was 5806.06 MMSCM which is 19.9% lower than the cumulative target and 8.5% lower than the production during the corresponding period of last year. Reasons for shortfall in production are as under:

- ❖ KG- OSN-2001/3 (GSPC): Underperformance of wells.
- ❖ KG-DWN-98/3 (RIL): Well A20 ceased on 18.02.2018 due to low reservoir pressure.
- ❖ Raniganj East (Essar): Few wells closed for planned maintenance and refrac jobs. Major customer 'Matix' under operational shutdown.

3. Refinery Production (in terms of crude oil processed)

Refinery production during February, 2018 was 20086.12 TMT which is 0.21% higher than the target for the month and 5.44% higher when compared with February, 2017. Cumulative production during April-February, 2017-18 was 230819.76 TMT which is 3.07% higher than the target for the period and 3.02% higher than the production during corresponding period of last year. Unit-wise production is given at **Annexure-III**. Company-wise production for the month of February, 2018 and cumulatively for the period April-February, 2017-18 vis-à-vis same period of last year has been shown in Table-3 and month-wise in Figure-3.

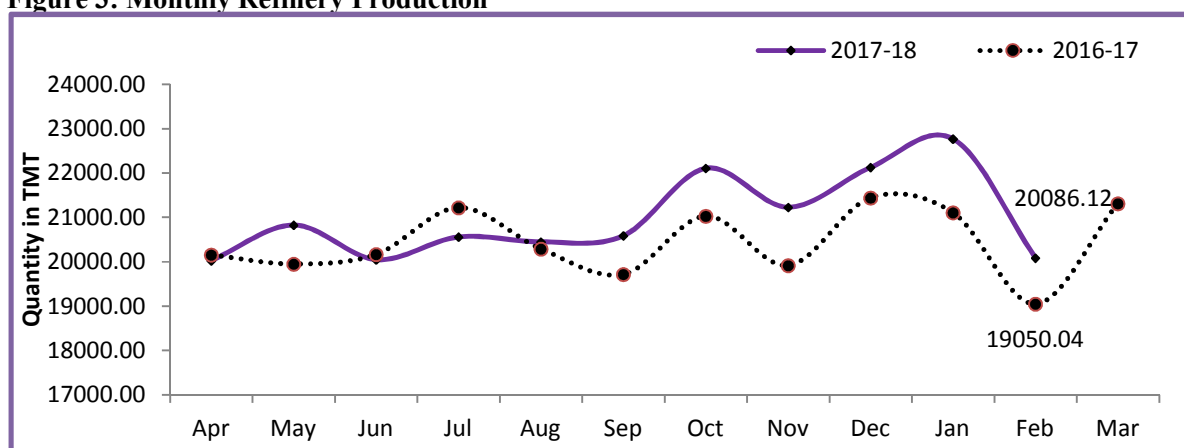
Table 3: Refinery Production (TMT)

Oil Company	Target	February (Month)				April-February (Cumulative)			
	2017-18 (Apr-Mar)	2017-18		2016-17	% over last year	2017-18		2016-17	% over last year
		Target	Prod.*	Prod.		Target	Prod.*	Prod.	
CPSE	140322	11577.51	11492.24	10726.35	107.14	127484.02	132712.60	125248.02	105.96
IOCL	66290	5510.91	5346.49	5336.44	100.19	60072.32	63404.37	58910.47	107.63
BPCL	27000	2275.00	2365.58	2022.21	116.98	24475.00	25484.47	23558.35	108.18
HPCL	18000	1402.86	1468.16	1456.29	100.81	16504.77	16685.58	16224.23	102.84
CPCL	10300	848.36	860.67	471.35	182.60	9357.53	9807.04	9503.52	103.19
NRL	2670	205.28	211.91	210.12	100.85	2443.31	2597.75	2453.62	105.87
MRPL	16000	1330.00	1233.22	1222.97	100.84	14575.00	14660.32	14519.63	100.97
ONGC	62	5.10	6.22	6.97	89.24	56.09	73.08	78.19	93.46
JVs	15201	1377.00	1446.24	1315.90	109.91	13733.00	14004.05	15533.77	90.15
BORL	6000	525.00	500.73	480.66	104.17	5475.00	6138.74	5741.39	106.92
HMEL	9201	852.00	945.51	835.24	113.20	8258.00	7865.31	9792.38	80.32
Private	90480	7090.28	7147.63	7007.80	102.00	82737.56	84103.11	83267.41	101.00
RIL	70174	5412.44	5553.32	5412.44	102.60	64109.33	65195.52	64109.33	101.69
EOL	20306	1677.85	1594.31	1595.36	99.93	18628.23	18907.59	19158.09	98.69
TOTAL	246002	20044.80	20086.12	19050.04	105.44	223954.58	230819.76	224049.21	103.02

Note: Totals may not tally due to rounding off.

*: Provisional

Figure 3: Monthly Refinery Production



3.1 **CPSE Refineries' production** during February, 2018 was 11492.24 TMT which is 0.74% lower than the target for the month and 7.14% higher when compared with February, 2017. Cumulative production by CPSE refineries during April-February, 2017-18 was 132712.60 TMT which is 4.10% higher than the target for the period and 5.96% higher than the production during corresponding period of last year. Reasons for shortfall of refinery production in some CPSE refineries are as under:

- ❖ IOCL, Barauni: Lower due to Naphtha containment.
- ❖ IOCL, Paradip: Lower Hydrogen availability.

❖ MRPL, Mangalore: Reduction in Phase -2 CDU throughputs to accommodate upgradation of one the desalters in the unit and unit trip & forced maintenance of heat exchangers in Phase-1 CDU due to flange leak.

- 3.2 **Production in JV refineries** during February, 2018 was 1446.24 TMT which is 5.03% higher than the target for the month and 9.91% higher when compared with February, 2017. Cumulative production by JVs refineries during April-February, 2017-18 was 14004.05 TMT which is 1.97% higher than the target for the period but 9.85% lower than the production during corresponding period of last year. The major reason for shortfall in production was outage of refinery Hydrocracker unit for maintenance jobs in BORL Bina refinery.
- 3.3 **Production in private refineries** during February, 2018 was 7147.63 TMT which is higher by 0.81% than the target for the month and 2% higher when compared with February, 2017. Cumulative production by private refineries during April-February, 2017-18 was 84103.11 TMT which is 1.65% higher than the target for the period and marginally higher by 1% than the production during corresponding period of last year.
- 3.4 Refinery-wise details of the capacity utilization and production of petroleum products during the month of February, 2018 and cumulatively for the period April-February, 2017-18 vis-à-vis April-February, 2016-17 are given at **Annexures - IV and V** respectively.

MINISTRY OF PETROLEUM & NATURAL GAS

Annexure-I

Crude Oil Production during the month of February, 2018 and cumulatively for the period April-February, 2017-18 vis-à-vis April-February, 2016-17

(Para 1)

(Qty: '000' Tonnes)

Name of Undertaking/Unit/State	Planned production during the month	Production during the			Cumulative Production			% variation over last year		% variation during the month under review over planned production
		Month under review *	Corresponding month of last year **	Preceding month of current year **	(April-February)			During the month under review	Upto the end of the period	
					Planned production during current year	Actual production during current year *	Actual production during corresponding period of last year **			
(1)	(2)	(3)	(4)	(5)	(6)	(7)	(8)	(9)	(10)	(11)
1. ONGC	1786.274	1684.466	1741.462	1836.789	21059.188	20369.954	20286.920	-3.27	0.41	-5.70
Onshore	468.774	461.543	461.636	506.885	5554.999	5492.863	5415.985	-0.02	1.42	-1.54
Andhra Pradesh	23.980	22.266	21.756	23.596	289.682	294.810	248.128	2.34	18.81	-7.15
Assam ^	78.686	75.341	73.572	81.051	925.044	891.868	871.158	2.40	2.38	-4.25
Gujarat	347.132	343.616	345.707	380.163	4112.853	4067.267	4081.731	-0.60	-0.35	-1.01
Tamil Nadu	18.975	20.320	20.601	22.075	227.420	238.918	214.968	-1.36	11.14	7.09
Offshore	1317.500	1222.923	1279.826	1329.904	15504.189	14877.091	14870.935	-4.45	0.04	-7.18
Eastern Offshore	5.243	0.613	1.526	0.604	68.294	7.565	14.740	-59.83	-48.68	-88.31
Western Offshore	1185.474	1106.185	1168.534	1211.948	13963.878	13555.768	13615.256	-5.34	-0.44	-6.69
Condensates	126.782	116.125	109.766	117.352	1472.017	1313.758	1240.939	5.79	5.87	-8.41
2. OIL (Onshore)	286.514	260.488	260.319	285.403	3416.543	3094.308	2964.832	0.06	4.37	-9.08
Assam	286.034	259.849	259.738	284.694	3410.462	3086.504	2957.813	0.04	4.35	-9.15
Arunachal Pradesh	0.480	0.534	0.581	0.592	6.081	6.773	7.019	-8.09	-3.50	11.25
Rajasthan (Heavy Oil)		0.105	0.000	0.117	-	1.031	0.000	-	-	-
3. DGH (Private / JVC)	815.563	786.526	795.636	854.208	9727.715	9177.982	9666.523	-1.14	-5.05	-3.56
Onshore	677.002	639.173	632.142	699.456	8074.842	7441.075	7696.018	1.11	-3.31	-5.59
Arunachal Pradesh	3.992	3.031	3.599	3.517	47.616	39.611	43.671	-15.78	-9.30	-24.07
Assam	0.773	0.534	0.000	0.515	9.220	2.198	0.000	-	-	-30.91
Gujarat	15.220	10.940	10.847	12.512	180.962	126.662	125.853	0.86	0.64	-28.12
Rajasthan	647.372	618.357	612.413	676.064	7721.988	7195.977	7486.297	0.97	-3.88	-4.48
Tamil Nadu	9.645	6.311	5.283	6.848	115.056	76.627	40.197	19.46	90.63	-34.57
Offshore	138.561	147.353	163.494	154.752	1652.873	1736.907	1970.505	-9.87	-11.85	6.35
Eastern Offshore	60.985	58.667	75.696	66.555	727.506	754.799	885.004	-22.50	-14.71	-3.80
Gujarat Offshore	23.221	36.365	28.116	31.554	276.994	352.928	350.180	29.34	0.78	56.60
Western Offshore	54.355	52.321	59.682	56.643	648.374	629.180	735.321	-12.33	-14.43	-3.74
GRAND TOTAL (1+2+3)	2888.350	2731.480	2797.417	2976.400	34203.446	32642.244	32918.275	-2.36	-0.84	-5.43
Onshore	1432.289	1361.204	1354.097	1491.744	17046.384	4543.706	16076.835	0.52	-71.74	-4.96
Offshore	1456.061	1370.276	1443.320	1484.656	17157.062	4614.199	16841.440	-5.06	-72.60	-5.89

Note: Totals may not tally due to rounding off figures.

^: Includes crude oil production of Tripura

*: Provisional. **: Revised

Reasons for shortfall are indicated in the note.

MINISTRY OF PETROLEUM & NATURAL GAS

Annexure-II

Natural Gas Production during the month of February, 2018 and cumulatively for the period April-February, 2017-18 vis-à-vis April-February, 2016-17

(Para 2)

(Qty: Million Cubic Meters)

Name of Undertaking/Unit/State	Planned production during the month	Production during the			Cumulative Production (April-February)			% variation over last year		% variation during the month under review over planned production
		Month under review *	Corresponding month of last year **	Preceding month of current year **	Planned production during current year	Actual production during current year *	Actual production during corresponding period of last year **	During the month under review	Upto the end of the period	
(1)	(2)	(3)	(4)	(5)	(6)	(7)	(8)	(9)	(10)	(11)
1. ONGC	1975.272	1800.024	1773.113	1964.669	22002.892	21415.860	20115.664	1.52	6.46	-8.87
Onshore	410.069	437.287	437.977	479.921	4937.792	5147.864	4718.643	-0.16	9.10	6.64
Andhra Pradesh	75.950	82.696	71.470	84.266	876.258	856.515	786.926	15.71	8.84	8.88
Assam	34.068	38.876	33.745	42.991	402.995	465.135	393.061	15.21	18.34	14.11
Gujarat	105.973	108.988	128.496	124.988	1262.502	1415.920	1348.127	-15.18	5.03	2.84
Rajasthan	0.384	0.697	0.506	0.607	4.576	4.842	4.289	37.75	12.89	81.51
Tamil Nadu	81.474	92.541	79.500	102.200	1030.034	1089.815	889.682	16.40	22.49	13.58
Tripura	112.219	113.489	124.260	124.869	1361.428	1315.637	1296.558	-8.67	1.47	1.13
Offshore	1565.203	1362.737	1335.136	1484.748	17065.099	16267.996	15397.021	2.07	5.66	-12.94
Eastern Offshore	162.641	36.597	50.702	42.799	952.387	504.527	414.226	-27.82	21.80	-77.50
Western Offshore	1402.562	1326.140	1284.434	1441.949	16112.712	15763.469	14982.795	3.25	5.21	-5.45
2. OIL	245.008	209.326	225.180	238.460	2752.188	2644.768	2685.532	-7.04	-1.52	-14.56
Assam	229.028	192.599	207.220	217.471	2518.398	2441.226	2460.764	-7.06	-0.79	-15.91
Arunachal Pradesh	0.980	0.878	0.910	0.966	11.690	10.590	10.858	-3.52	-2.47	-10.41
Rajasthan	15.000	15.849	17.050	20.023	222.100	192.952	213.910	-7.04	-9.80	5.66
3. DGH (Private / JVC)	611.576	474.753	524.240	491.945	7248.254	5806.062	6345.212	-9.44	-8.50	-22.37
Onshore	110.686	120.374	85.833	110.843	1335.077	1249.834	1056.870	40.24	18.26	8.75
Arunachal Pradesh	17.490	1.964	1.330	2.078	208.636	15.938	14.233	47.67	11.98	-88.77
Assam	0.671	8.057	0.000	8.149	7.905	39.729	0.000	-	-	1100.75
Gujarat	3.545	5.317	7.024	5.762	57.132	69.505	82.465	-24.30	-15.72	50.01
Rajasthan	87.747	103.934	76.754	93.644	1046.701	1112.309	955.275	35.41	16.44	18.45
Tamil Nadu	1.233	1.102	0.725	1.210	14.703	12.353	4.897	52.00	152.26	-10.59
CBM	105.464	62.584	45.510	60.924	1216.511	664.383	519.739	37.52	27.83	-40.66
Jharkhand (CBM)	0.275	0.216	0.284	0.341	3.285	3.740	2.787	-23.94	34.19	-21.45
Madhya Pradesh (CBM)	36.055	26.073	0.650	17.453	430.082	167.309	5.411	3911.23	2992.02	-27.69
West Bengal (CBM)	69.134	36.295	44.576	43.130	783.144	493.334	511.541	-18.58	-3.56	-47.50
Offshore	395.426	291.795	392.897	320.178	4696.666	3891.845	4768.603	-25.73	-18.39	-26.21
Eastern Offshore	251.345	145.331	240.642	166.729	2998.189	2110.640	2952.125	-39.61	-28.50	-42.18
Gujarat Offshore	5.062	5.716	5.548	7.030	40.181	90.124	74.822	3.03	20.45	12.92
Western Offshore	139.019	140.748	146.707	146.419	1658.296	1691.081	1741.656	-4.06	-2.90	1.24
TOTAL (1+2+3)	2831.856	2484.103	2522.533	2695.074	32003.334	29866.690	29146.408	-1.52	2.47	-12.28
CBM	105.464	62.584	45.510	60.924	1216.511	664.383	519.739	37.52	27.83	-40.66
Onshore	765.763	766.987	748.990	829.224	9025.057	9042.466	8461.045	2.40	6.87	0.16
Offshore	1960.629	1654.532	1728.033	1804.926	21761.765	20159.841	20165.624	-4.25	-0.03	-15.61

Note: Totals may not tally due to rounding off figures.

*: Provisional.

** : Revised

CBM: Coal Bed Methane production.

Reasons for shortfall are indicated in the note.

MINISTRY OF PETROLEUM & NATURAL GAS

Annexure-III

Refinery Production (in terms of crude oil processed) during the month of February, 2018 and cumulatively for the period April-February, 2017-18 vis-à-vis April-February, 2016-17

(Para 3)

(Qty: '000' Tonnes)

Name of Undertaking/Unit	Planned production during the month	Production during the			Cumulative Production			% variation over last year		% variation during the month under review over planned production
		Month under review *	Corresponding month of last year	Preceding month of current year **	(April-February)			During the month under	Upto the end of the period	
					Planned production during current year	Actual production during current year *	Actual production during corresponding period of last year **			
(1)	(2)	(3)	(4)	(5)	(6)	(7)	(8)	(9)	(10)	(11)
A. Public Sector	11577.512	11492.245	10726.348	13160.929	127484.018	132712.600	125248.022	7.14	5.96	-0.74
1. IOC, Guwahati	65.205	74.909	67.884	85.876	777.808	934.211	784.924	10.35	19.02	14.88
2. IOC, Barauni	501.016	451.725	487.235	596.860	5195.303	5217.865	5968.326	-7.29	-12.57	-9.84
3. IOC, Gujarat	1122.030	1160.662	1028.183	1279.221	11580.998	12555.754	12759.652	12.88	-1.60	3.44
4. IOC, Haldia	610.000	651.299	624.213	709.346	6735.000	6958.158	6973.323	4.34	-0.22	6.77
5. IOC, Mathura	615.002	741.616	721.468	830.037	7664.999	8372.096	8400.152	2.79	-0.33	20.59
6. IOC, Digboi	37.000	48.142	42.016	57.688	457.000	603.050	480.042	14.58	25.62	30.11
7. IOC, Panipat	1214.086	1250.348	1247.567	1364.906	13851.452	14236.346	14243.606	0.22	-0.05	2.99
8. IOC, Bongaigaon	183.440	210.275	188.788	204.628	2096.906	2183.025	2275.365	11.38	-4.06	14.63
9. IOC, Paradip	1163.131	757.513	929.088	1080.356	11712.855	12343.865	7025.084	-18.47	75.71	-34.87
Total IOC	5510.911	5346.489	5336.442	6208.918	60072.322	63404.370	58910.474	0.19	7.63	-2.98
10. BPCL, Mumbai	1125.000	1196.515	921.007	1312.689	12060.000	12786.090	12855.608	29.91	-0.54	6.36
11. BPCL, Kochi	1150.000	1169.064	1101.208	1365.094	12415.000	12698.375	10702.746	6.16	18.65	1.66
Total BPCL	2275.000	2365.579	2022.215	2677.783	24475.000	25484.465	23558.354	16.98	8.18	3.98
12. HPCL, Mumbai	652.822	685.746	683.974	746.611	7787.232	7900.966	7750.293	0.26	1.94	5.04
13. HPCL, Visakh	750.036	782.409	772.314	824.597	8717.533	8784.615	8473.933	1.31	3.67	4.32
Total HPCL	1402.858	1468.155	1456.288	1571.208	16504.765	16685.581	16224.226	0.81	2.84	4.65
14. CPCL, Manali	810.000	825.691	433.916	917.272	8900.000	9355.921	9023.714	90.29	3.68	1.94
15. CPCL, CBR	38.356	34.975	37.432	52.950	457.535	451.114	479.809	-6.56	-5.98	-8.82
Total CPCL	848.356	860.666	471.348	970.222	9357.535	9807.035	9503.523	82.60	3.19	1.45
16. NRL, Numaligarh	205.282	211.912	210.121	250.703	2443.308	2597.749	2453.618	0.85	5.87	3.23
17. MRPL, Mangalore	1330.000	1233.224	1222.965	1475.355	14575.000	14660.316	14519.633	0.84	0.97	-7.28
18. ONGC, Tatipaka	5.105	6.220	6.969	6.740	56.088	73.084	78.194	-10.76	-6.54	21.84
B. Joint Venture	1377.000	1446.241	1315.900	1615.363	13733.000	14004.054	15533.774	9.91	-9.85	5.03
19. BORL, Bina	525.000	500.727	480.662	600.197	5475.000	6138.743	5741.394	4.17	6.92	-4.62
20. HMEL, GGSR, Bhatinda	852.000	945.514	835.238	1015.166	8258.000	7865.311	9792.380	13.20	-19.68	10.98
C. Private Sector	7090.284	7147.632	7007.795	7993.499	82737.560	84103.109	83267.413	2.00	1.00	0.81
21. RIL, Jamnagar	2504.839	2653.917	2504.839	2929.073	30038.365	30304.934	30038.365	5.95	0.89	5.95
22. RIL, SEZ	2907.598	2899.407	2907.598	3294.159	34070.962	34890.589	34070.962	-0.28	2.41	-0.28
Total RIL	5412.437	5553.324	5412.437	6223.232	64109.327	65195.523	64109.327	2.60	1.69	2.60
23. EOL, Vadinar	1677.847	1594.308	1595.358	1770.267	18628.233	18907.586	19158.086	-0.07	-1.31	-4.98
TOTAL(A+B+C)	20044.795	20086.118	19050.043	22769.791	223954.577	230819.763	224049.208	5.44	3.02	0.21

Note: 1. Totals may not tally due to rounding off figures.

*: Provisional. **: Revised

2. Target for the year 2017-18 (Month-wise) reconciled.

MINISTRY OF PETROLEUM & NATURAL GAS

Annexure-IV

Refinery-wise Capacity Utilisation during the month of February, 2018 and cumulatively for the period April-February, 2017-18 vis-à-vis April-February, 2016-17 (Para 3.4)

(Qty: '000' Tonnes)

Name of Undertaking/Unit	February, 2018			February, 2017			Cumulative (April - February)					
	Prorated Installed Capacity	Actual Crude T'put *	% Utilisation of Installed Capacity	Prorated Installed Capacity	Actual Crude T'put	% Utilisation of Installed Capacity	2017-18			2016-17		
							Prorated Installed Capacity	Actual Crude T'put *	% Utilisation of Installed Capacity	Prorated Installed Capacity	Actual Crude T'put **	% Utilisation of Installed Capacity
(1)	(2)	(3)	(4)	(5)	(6)	(7)	(8)	(9)	(10)	(11)	(12)	(13)
A. Public Sector	10898.00	11492.24	105.45	10361.00	10726.35	103.53	130000.00	132712.60	102.09	123595.00	125248.02	101.34
1. IOC, Guwahati	77.00	74.91	97.28	77.00	67.88	88.16	915.00	934.21	102.10	915.00	784.92	85.78
2. IOC, Barauni	460.00	451.73	98.20	460.00	487.24	105.92	5490.00	5217.87	95.04	5490.00	5968.33	108.71
3. IOC, Gujarat	1051.00	1160.66	110.43	1051.00	1028.18	97.83	12536.00	12555.75	100.16	12536.00	12759.65	101.78
4. IOC, Haldia	575.00	651.30	113.27	575.00	624.21	108.56	6863.00	6958.16	101.39	6863.00	6973.32	101.61
5. IOC, Mathura	614.00	741.62	120.78	614.00	721.47	117.50	7321.00	8372.10	114.36	7321.00	8400.15	114.74
6. IOC, Digboi	50.00	48.14	96.28	50.00	42.02	84.03	595.00	603.05	101.35	595.00	480.04	80.68
7. IOC, Panipat	1151.00	1250.35	108.63	1151.00	1247.57	108.39	13726.00	14236.35	103.72	13726.00	14243.61	103.77
8. IOC, Bongaigaon	180.00	210.28	116.82	180.00	188.79	104.88	2150.00	2183.03	101.54	2150.00	2275.37	105.83
9. IOC, Paradip	1151.00	757.51	65.81	1151.00	929.09	0.00	13726.00	12343.87	89.93	13726.00	7025.08	0.00
Total IOC	5308.00	5346.49	100.73	5308.00	5336.44	100.54	63323.00	63404.37	100.13	63323.00	58910.47	93.03
10. BPCL, Mumbai	921.00	1196.52	129.91	921.00	921.01	100.00	10981.00	12786.09	116.44	10981.00	12855.61	117.07
11. BPCL, Kochi	1189.00	1169.06	98.32	729.00	1101.21	151.06	14184.00	12698.38	89.53	8693.00	10702.75	123.12
Total BPCL	2110.00	2365.58	112.11	1649.00	2022.21	122.63	25164.00	25484.47	101.27	19674.00	23558.35	119.74
12. HPCL, Mumbai	575.00	685.75	119.26	499.00	683.97	137.07	6863.00	7900.97	115.12	5948.00	7750.29	130.30
13. HPCL, Visakh	637.00	782.41	122.83	637.00	772.31	121.24	7595.00	8784.62	115.66	7595.00	8473.93	111.57
Total HPCL	1212.00	1468.16	121.13	1135.00	1456.29	128.31	14458.00	16685.58	115.41	13543.00	16224.23	119.80
14. CPCL, Manali	805.00	825.69	102.57	805.00	433.92	53.90	9608.00	9355.92	97.38	9608.00	9023.71	93.92
15. CPCL, CBR	77.00	34.98	45.42	77.00	37.43	48.61	915.00	451.11	49.30	915.00	479.81	52.44
Total CPCL	882.00	860.67	97.58	882.00	471.35	53.44	10523.00	9807.04	93.20	10523.00	9503.52	90.31
16. NRL, Numaligarh	230.00	211.91	92.14	230.00	210.12	91.36	2745.00	2597.75	94.64	2745.00	2453.62	89.38
17. MRPL, Mangalore	1151.00	1233.22	107.14	1151.00	1222.97	106.25	13726.00	14660.32	106.81	13726.00	14519.63	105.78
18. ONGC, Tatipaka	5.00	6.22	124.39	5.00	6.97	139.39	60.00	73.08	121.81	60.00	78.19	130.32
B. Joint Venture	1327.00	1446.24	108.99	1151.00	1315.90	114.33	15831.00	14004.05	88.46	13726.00	15533.77	113.17
19. BORL, Bina	460.00	500.73	108.85	460.00	480.66	104.49	5490.00	6138.74	111.82	5490.00	5741.39	104.58
20. HMEL, GGSF, Bhatinda	867.00	945.51	109.06	690.00	835.24	121.05	10340.00	7865.31	76.07	8236.00	9792.38	118.90
C. Private Sector	6766.00	7147.63	105.64	6137.00	7007.80	114.19	80709.00	84103.11	104.21	73205.00	83267.41	113.75
21. RIL, Jamnagar	2532.00	2653.92	104.82	2532.00	2504.84	98.93	30197.00	30304.93	100.36	30197.00	30038.36	99.47
22. RIL, SEZ	2700.00	2899.41	107.39	2071.00	2907.60	140.40	32210.00	34890.59	108.32	24707.00	34070.96	137.90
Total RIL	5232.00	5553.32	106.14	4603.00	5412.44	117.58	62408.00	65195.52	104.47	54904.00	64109.33	116.77
23. EOL, Vadinar	1534.00	1594.31	103.93	1534.00	1595.36	104.00	18301.00	18907.59	103.31	18301.00	19158.09	104.68
TOTAL(A+B+C)	18991.00	20086.12	105.77	17649.00	19050.04	107.94	226540.00	230819.76	101.89	210526.00	224049.21	106.42

*: Provisional. **: Revised

Note: Refinery capacity as on 01.12.2017 is 247.566 MMT

MINISTRY OF PETROLEUM & NATURAL GAS

Production of Petroleum Products during the month of February, 2018 and cumulatively for the period April-February, 2017-18 vis-à-vis April-February, 2016-17

Annexure-V

(Para 3.4)

(Qty: '000' Tonnes)

Name of Undertaking/Unit	Planned production during the month	Production during the			Cumulative Production			% variation over last year		% variation during the month under review over planned production
		Month under review *	Corresponding month of last year	Preceding month of current year **	(April-February)			During the month under review	Upto the end of the period	
					Planned production during current year	Actual production during current year*	Actual production during corresponding period of last year**			
(1)	(2)	(3)	(4)	(5)	(6)	(7)	(8)	(9)	(10)	(11)
I. Refinery										
A. Public Sector	10978.042	11098.005	10165.816	12481.264	119294.444	125703.569	117566.204	9.17	6.92	1.09
1. IOC, Guwahati	68.577	86.414	93.852	98.545	827.718	1043.456	1019.113	-7.93	2.39	26.01
2. IOC, Barauni	470.703	497.625	429.246	572.088	4772.164	4946.148	5398.014	15.93	-8.37	5.72
3. IOC, Gujarat	1077.508	1118.089	974.082	1229.174	11018.205	12054.534	11920.449	14.78	1.12	3.77
4. IOC, Haldia	577.636	610.472	563.641	667.966	6334.189	6494.246	6317.726	8.31	2.79	5.68
5. IOC, Mathura	629.270	713.374	671.373	837.342	7409.984	8283.904	8073.077	6.26	2.61	13.37
6. IOC, Digboi	36.158	44.589	42.060	57.870	459.917	603.319	490.023	6.01	23.12	23.32
7. IOC, Panipat	1222.721	1319.752	1253.048	1427.584	13857.129	14400.441	14356.987	5.32	0.30	7.94
8. IOC, Bongaigaon	168.609	202.115	160.940	220.925	1927.836	2027.926	2043.761	25.58	-0.77	19.87
9. IOC, Paradip	1036.800	692.255	797.099	943.280	10277.996	11081.021	5874.033	-13.15	88.64	-33.23
Total IOC	5287.981	5284.685	4985.341	6054.774	56885.137	60934.995	55493.183	6.00	9.81	-0.06
10. BPCL, Mumbai	1089.458	1156.954	877.565	1276.597	11538.003	12401.672	12355.891	31.84	0.37	6.20
11. BPCL, Kochi	1053.646	1116.424	1072.969	1266.483	11511.474	12008.058	10104.987	4.05	18.83	5.96
Total BPCL	2143.104	2273.378	1950.534	2543.080	23049.478	24409.730	22460.878	16.55	8.68	6.08
12. HPCL, Mumbai	602.920	665.477	657.064	682.401	7186.555	7394.677	7239.926	1.28	2.14	10.38
13. HPCL, Visakh	691.742	718.502	725.710	766.241	8013.581	8111.230	7801.341	-0.99	3.97	3.87
Total HPCL	1294.662	1383.979	1382.774	1448.642	15200.136	15505.907	15041.267	0.09	3.09	6.90
14. CPCL, Manali	731.438	748.476	406.371	805.218	8036.691	8476.260	8247.496	84.19	2.77	2.33
15. CPCL, CBR	38.542	35.109	37.428	52.895	459.752	453.785	481.261	-6.20	-5.71	-8.91
Total CPCL	769.980	783.585	443.799	858.113	8496.443	8930.045	8728.757	76.56	2.31	1.77
16. NRL, Numaligarh	205.019	185.435	205.235	251.290	2439.284	2582.234	2435.733	-9.65	6.01	-9.55
17. MRPL, Mangalore	1272.315	1181.130	1191.401	1319.078	13169.247	13271.661	13331.454	-0.86	-0.45	-7.17
18. ONGC, Tatipaka	4.980	5.813	6.732	6.287	54.720	68.997	74.931	-13.66	-7.92	16.72
B. Joint Venture	1283.250	1315.949	1214.253	1555.676	12771.100	13035.833	14396.301	8.38	-9.45	2.55
19. BOREL, Bina	474.450	430.364	462.077	550.082	4940.000	5569.376	5239.822	-6.86	6.29	-9.29
20. HMEL, GGSB, Bhatinda	808.800	885.585	752.176	1005.594	7831.100	7466.457	9156.479	17.74	-18.46	9.49
C. Private Sector	7331.079	7698.119	7261.025	8510.219	85463.676	89429.567	85837.936	6.02	4.18	5.01
21. RIL, Jamnagar	2426.904	2700.357	2426.904	2892.941	30105.591	30537.070	30105.591	11.27	1.43	11.27
22. RIL, SEZ	3287.842	3454.194	3287.842	3972.476	37431.419	40830.534	37431.419	5.06	9.08	5.06
Total RIL	5714.746	6154.551	5714.746	6865.417	67537.010	71367.604	67537.010	7.70	5.67	7.70
23. EOL, Vadinar	1616.333	1543.568	1546.279	1644.802	17926.667	18061.963	18300.926	-0.18	-1.31	-4.50
TOTAL(A+B+C)	19592.371	20112.073	18641.094	22547.159	217529.221	228168.969	217800.441	7.89	4.76	2.65
II. Fractionators										
ONGC	249.903	258.595	253.841	277.391	2962.725	2982.190	2865.108	1.87	4.09	3.48
OIL	2.900	2.942	2.716	3.160	28.800	30.709	31.660	8.32	-3.00	1.45
GAIL	81.452	96.324	88.641	102.711	959.902	1153.415	1020.273	8.67	13.05	18.26
D. Total Fractionators	334.255	357.861	345.198	383.262	3951.427	4166.314	3917.041	3.67	6.36	7.06
Grand Total (A+B+C+D)	19926.627	20469.934	18986.292	22930.421	221480.647	232335.283	221717.481	7.81	4.79	2.73

Note: 1. Totals may not tally due to rounding off figures.

*: Provisional. **: Revised

2. Target for the year 2017-18 (Month-wise) reconciled.