

Government of India
Ministry of Petroleum and Natural Gas
Economic & Statistics Division

New Delhi
Dated the 19th January, 2018

Monthly Production Report
December, 2017

Crude Oil

1. Crude oil production¹ during December, 2017 was 2991.06 TMT which is 6.8% lower than target and 2.1% lower when compared with December 2016. Cumulative crude oil production during April-December, 2017 was 26934.40 TMT which is 4.33% lower than target for the period and 0.41% lower than production during corresponding period of last year. Unit-wise and State-wise crude oil production is given at **Annexure-I**. Unit-wise crude oil production for the month of December, 2017 and cumulatively for the period April-December, 2017 vis-à-vis same period of last year has been shown in Table-1 and month-wise in Figure-1.

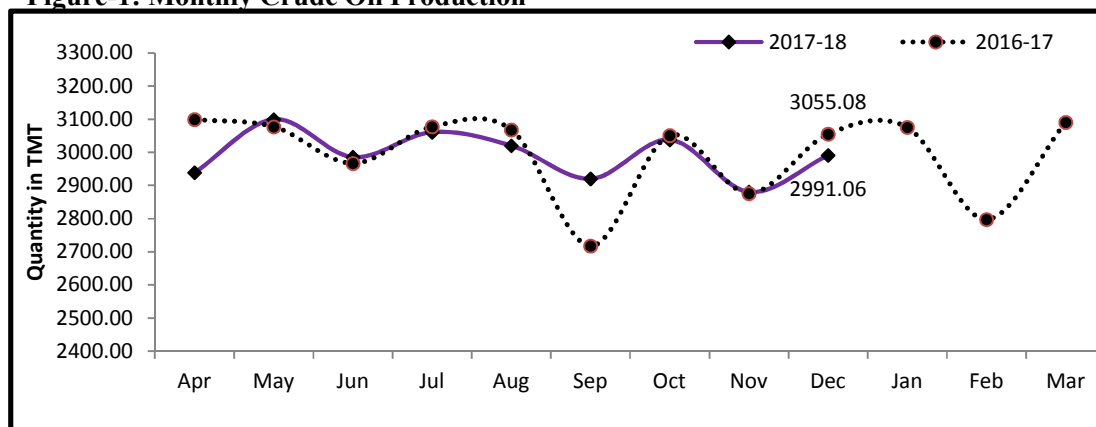
Table-1: Crude Oil Production (in TMT)

Oil Company	Target	December (Month)				April-December (Cumulative)			
		2017-18		2016-17	% over last year	2017-18		2016-17	% over last year
		Target	Prod.*	Prod.		Target	Prod.*	Prod.	
ONGC	23071.00	1989.40	1862.08	1904.60	97.77	17330.33	16848.70	16629.09	101.32
OIL	3734.00	317.14	288.38	280.59	102.78	2813.00	2548.42	2430.46	104.85
PSC Fields	10562.00	902.92	840.61	869.89	96.63	8009.26	7537.28	7985.79	94.38
Total	37367.00	3209.45	2991.06	3055.08	97.90	28152.59	26934.40	27045.34	99.59

Note: Totals may not tally due to rounding off.

*: Provisional

Figure-1: Monthly Crude Oil Production



¹Including condensate

Unit-wise production details with reasons for shortfall are as under:

1.1 Crude oil production by ONGC during December, 2017 was 1862.08 TMT which is 6.40% lower than the monthly target and 2.23% lower when compared with December, 2016. Cumulative crude oil production by ONGC during April-December, 2017 was 16848.70 TMT which is 2.78% lower than target for the period but 1.32% higher than production during corresponding period of last year. Reasons for shortfall in production with respect to target are as under:

- Delay in implementation of ‘Conversion of Sagar Samrat to MOPU’ & ‘Integrated Development of B 127 Cluster’
- Production from NBP field in western offshore affected due to ESP related issues.
- Increase in water cut in wells of Heera, Neelam and B-173 fields.
- Frequent power shut down hampered artificial lift operations and caused unexpected well closure in Mehsana.

1.2 Crude oil production by OIL during December, 2017 was 288.38 TMT which is 9.07% lower than monthly target but 2.78% higher than production in December, 2016. Cumulative crude oil production by OIL during April-December, 2017 was 2548.42 TMT which is 9.41% lower than target for the period but 4.85% higher than production during corresponding period of last year. Reasons for shortfall in production are as under:

- Less than planned contribution from old wells – Rise in water cut in wells and decline in total liquid production of wells of Greater Hapjan and Greater Chandmari Fields.
- Less than planned contribution from work over wells

1.3 Crude oil production by Pvt/JVs during December, 2017 was 840.61 TMT which is 6.9% lower than the monthly target and 3.37% lower than December, 2016. Cumulative crude oil production by Pvt/JVs during April-December, 2017 was 7537.28 TMT which is 5.89% lower than target for the period and 5.62% lower than the production during corresponding period of last year. Reasons for shortfall in production are as under:

- RJ-ON-90/1 (CIL): Around 90 wells are closed either due to high water cut or require WOJ. Underperformance of reservoir in Bhagyam. Production affected in Dec’17 from Guda and Kaameshwari West due to non-availability of tankers.
- Panna-Mukta (Shell): Lower production due to closure of re-perforation wells and loading of well PC-14H.
- CY-ONN-2002/2 (ONGC): Full fledged production yet to be realized owing to non-grant of PML.

Natural Gas

2. Natural gas production during December, 2017 was 2751.36 MMSCM which is 7.42% lower than the target for the month but 0.53% higher when compared with December, 2016. Cumulative natural gas production during April-December, 2017 was 24687.55 MMSCM which is 5.5% lower than target for the period but 3.36% higher than the production during corresponding period of last year. Unit-wise and state-wise natural gas production is given at **Annexure-II**. Unit-wise natural gas production for the month of December, 2017 and cumulatively for the period April-December, 2017 vis-à-vis same period of last year has been shown in Table-2 and month-wise in Figure-2.

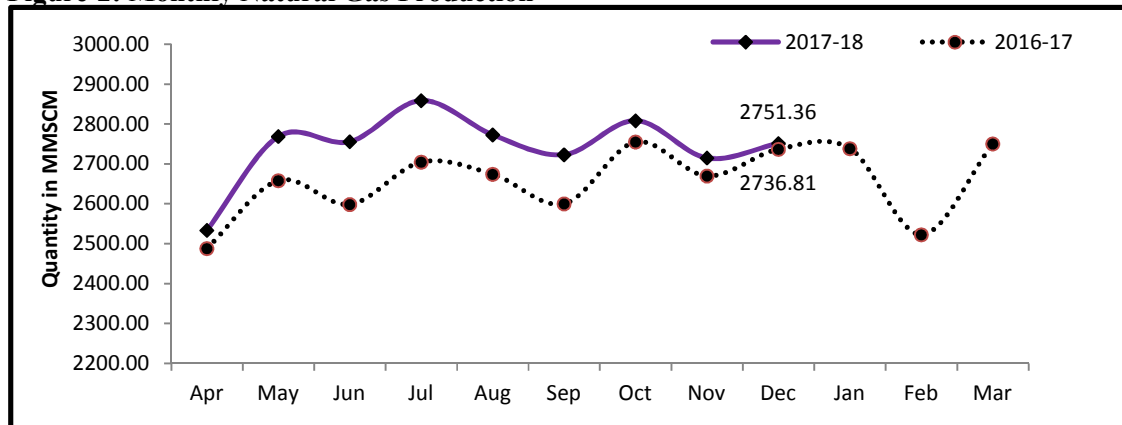
Table-2: Natural Gas Production (MMSCM)

Oil Company	Target	December (Month)				April-December (Cumulative)			
	2017-18 (Apr-Mar)	2017-18		2016-17	% over last year	2017-18		2016-17	% over last year
		Target	Prod.*	Prod.		Target	Prod.*	Prod.	
ONGC	24208.00	2045.87	2000.79	1926.76	103.84	17902.37	17651.17	16420.29	107.50
OIL	3000.00	252.21	236.97	246.50	96.14	2259.67	2196.98	2211.56	99.34
PSC Fields	8034.00	673.64	513.59	563.56	91.13	5962.33	4839.40	5253.54	92.12
Total	35242.00	2971.72	2751.36	2736.81	100.53	26124.37	24687.55	23885.39	103.36

Note: Totals may not tally due to rounding off.

*: Provisional

Figure-2: Monthly Natural Gas Production



- 2.1 Natural gas production by ONGC during December, 2017 was 2000.79 MMSCM which is 2.2% lower than the monthly target but 3.84% higher when compared with December, 2016. Cumulative natural gas production by ONGC during April-December, 2017 was 17651.17 MMSCM which is 1.4% lower than the cumulative target but 7.5% higher than the production during the corresponding period of the last year. Reasons for shortfall in production during month are as under:

- Delay in implementation of ‘Conversion of Sagar Samrat to MOPU’ & ‘Integrated Development of B 127 Cluster’.
- Delay in commencement of production planned from one new sub-sea well in Eastern Offshore. Well has been completed and expected to be put on production during February, 2018.

2.2 Natural gas production by OIL during December, 2017 was 236.97 MMSCM which is 6.04% lower than the monthly target and 3.86% lower than December, 2016. Cumulative natural gas production by OIL during April-December, 2017 was 2196.98 MMSCM which is 2.77% lower than the cumulative target and 0.66% lower than the production during the corresponding period of last year. Reasons for shortfall in production are as under:

- Reduction in production potential of few gas wells in Kathalguri and Zaloni area.
- Unscheduled maintenance shutdown of plants of major customers.

2.3 Natural gas production by Pvt/JVs during December, 2017 was 513.59 MMSCM which is 23.76% lower than the monthly target and 8.87% lower when compared with December, 2016. Cumulative natural gas production by Pvt/JVs during April-December, 2017 was 4839.40 MMSCM which is 18.83% lower than the cumulative target and 7.88% lower than the production during the corresponding period of last year. Reasons for shortfall in production are as under:

- KG- OSN-2001/3 (GSPC): Underperformance of wells.
- Sohagpur West (RIL): Underperformance of CBM wells.
- Raniganj East (Essar): Few wells closed for planned maintenance and refrac jobs. Less offtake by buyer.
- KG-DWN-98/3 (RIL): Closure of 3 wells in D1D3 field. Well A13 ceased on 15.12.2017 due to high water production.
- Panna-Mukta (Shell): Lower production due to closure of re-perforation wells and loading of well PC-14H.

3. Refinery Production (in terms of crude oil processed)

Refinery production during December, 2017 was 22129.13 TMT which is 2.43% higher than the target for the month and 3.21% higher when compared with December, 2016. Cumulative production during April-December, 2017 was 187963.86 TMT which is 3.28% higher than the target for the period and 2.21% higher than the production during corresponding period of last year. Unit-wise production is given at **Annexure-III**. Company-wise production for the month of December, 2017 and cumulatively for the period April-December, 2017 vis-à-vis same period of last year has been shown in Table-3 and month-wise in Figure-3.

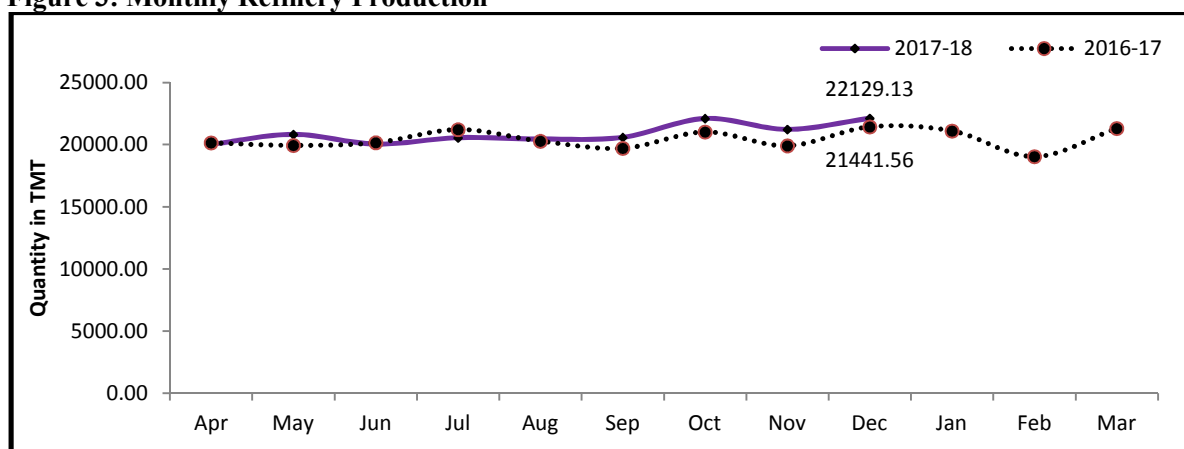
Table 3: Refinery Production (TMT)

Oil Company	Target	December (Month)				April-December (Cumulative)			
	2017-18 (Apr-Mar)	2017-18		2016-17	% over last year	2017-18		2016-17	% over last year
		Target	Prod.*	Prod.		Target	Prod.*	Prod.	
CPSE	140322	12425.82	12793.63	12098.54	105.75	103190.47	108059.43	102760.85	105.16
IOCL	66290	5872.03	5985.89	5682.22	105.34	48499.18	51848.96	48103.97	107.79
BPCL	27000	2375.00	2527.91	2307.73	109.54	19725.00	20441.10	19338.98	105.70
HPCL	18000	1554.27	1568.14	1620.20	96.79	13547.64	13646.22	13195.83	103.41
CPCL	10300	942.47	945.43	747.45	126.49	7566.71	7976.15	8170.39	97.62
NRL	2670	226.65	241.55	257.01	93.99	2011.37	2135.13	1960.56	108.90
MRPL	16000	1450.00	1517.44	1476.64	102.76	11795.00	11951.74	11927.60	100.20
ONGC	62	5.40	7.27	7.29	99.74	45.57	60.13	63.52	94.65
JVs	15201	1468.00	1625.05	1570.99	103.44	10888.00	10942.45	12697.89	86.18
BORL	6000	525.00	623.95	623.73	100.04	4425.00	5037.82	4677.93	107.69
HMEL	9201	943.00	1001.09	947.25	105.68	6463.00	5904.63	8019.97	73.62
Private	90480	7710.97	7710.46	7772.04	99.21	67914.37	68961.98	68432.36	100.77
RIL	70174	5994.99	5941.67	5994.99	99.11	52641.83	53418.97	52641.83	101.48
EOL	20306	1715.98	1768.79	1777.05	99.53	15272.54	15543.01	15790.54	98.43
TOTAL	246002	21604.79	22129.13	21441.56	103.21	181992.84	187963.86	183891.11	102.21

Note: Totals may not tally due to rounding off.

*: Provisional

Figure 3: Monthly Refinery Production



3.1 CPSE Refineries' production during December, 2017 was 12793.63 TMT which is 2.96% higher than the target for the month and 5.75% higher than the production achieved in the corresponding month of last year. Cumulative production by CPSE refineries during April-December, 2017 was 108059.43 TMT which is 4.72% higher than the target for the period and 5.16% higher than the production during corresponding period of last year. Reasons for shortfall of refinery production in some CPSE refineries are as under:

- IOCL, Barauni: Throughput lower than previous year due to M&I shutdown in Jul-Aug 2017 and HSD / naphtha containment.

- IOCL, Haldia: Throughput lower due to M&I shutdown and VGO containment.
- IOCL, Mathura: Throughput lower due to M&I shutdown.
- IOCL, Paradip: Throughput lower due to VGO containment.
- BPCL, Mumbai: Crude processing for Apr-Dec'17 is lower than Apr- Dec'16 due to planned outage of CDU3/ Hydrogen /Hydrocracker units for turnaround & revamp and annual turnaround of FCC/CCR and DHDS.
- HPCL, Visakh: Throughput lower due to CDU deferred shutdown taken for turnaround Nov-Dec, 2017 planned in vis -a-vis July-Aug 2017.
- CPCL CBR: Throughput lower due to product upliftment constraints.

3.2 Production in JV refineries during December, 2017 was 1625.05 TMT which is 10.7% higher than the target for the month and 3.44% higher than the production achieved in the corresponding month of last year. Cumulative production by JVs refineries during April-December, 2017 was 10942.45 TMT which is 0.5% lower than the target for the period and 13.82% lower than the production during corresponding period of last year.

3.3 Production in private refineries during December, 2017 was 7710.46 TMT which is marginally lower (0.01%) than the target for the month and 0.79% lower when compared with December, 2016. Cumulative production by private refineries during April-December, 2017 was 68961.98 TMT which is 1.54% higher than the target for the period and 0.77% higher than the production during corresponding period of last year.

3.4 Refinery-wise details of the capacity utilization and production of petroleum products during the month of December, 2017 and cumulatively for the period April-December, 2017 vis-à-vis April-December, 2016 are given at **Annexures - IV and V** respectively.

MINISTRY OF PETROLEUM & NATURAL GAS

Annexure-I

Crude Oil Production during the month of December, 2017 and cumulatively for the period April-December, 2017 vis-à-vis April-December, 2016

(Para 1)

(Qty: '000' Tonnes)

Name of Undertaking/Unit/State	Planned production during the month	Production during the			Cumulative Production			% variation over last year		% variation during the month under review over planned production
		Month under review *	Corresponding month of last year **	Preceding month of current year **	(April-December)			During the month under review	Upto the end of the period	
					Planned production during current year	Actual production during current year *	Actual production during corresponding period of last year **			
(1)	(2)	(3)	(4)	(5)	(6)	(7)	(8)	(9)	(10)	(11)
1. ONGC	1989.396	1862.075	1904.599	1795.291	17330.327	16848.699	16629.094	-2.23	1.32	-6.40
Onshore	519.497	508.623	509.033	489.495	4567.118	4524.435	4443.091	-0.08	1.83	-2.09
Andhra Pradesh	27.595	27.077	24.118	26.922	238.635	248.948	203.158	12.27	22.54	-1.88
Assam ^	86.794	83.359	82.006	79.188	759.338	735.476	715.844	1.65	2.74	-3.96
Gujarat	383.705	376.837	382.664	363.255	3381.939	3343.488	3351.010	-1.52	-0.22	-1.79
Tamil Nadu	21.403	21.350	20.245	20.130	187.206	196.523	173.079	5.46	13.55	-0.25
Offshore	1469.899	1353.452	1395.566	1305.796	12763.208	12324.264	12186.003	-3.02	1.13	-7.92
Eastern Offshore	6.008	0.648	1.298	0.646	57.145	6.348	11.588	-50.08	-45.22	-89.21
Western Offshore	1326.151	1232.742	1277.462	1191.699	11497.542	11237.635	11156.645	-3.50	0.73	-7.04
Condensates	137.740	120.062	116.806	113.451	1208.521	1080.281	1017.770	2.79	6.14	-12.83
2. OIL (Onshore)	317.140	288.380	280.590	279.540	2813.000	2548.417	2430.457	2.78	4.85	-9.07
Assam	316.608	287.654	279.949	278.796	2807.931	2541.961	2424.660	2.75	4.84	-9.15
Arunachal Pradesh	0.532	0.613	0.641	0.621	5.069	5.647	5.797	-4.37	-2.59	15.23
Rajasthan (Heavy Oil)		0.113	0.000	0.123	-	0.809	0.000	-	-	-
3. DGH (Private / JVC)	902.916	840.605	869.886	805.845	8009.264	7537.283	7985.788	-3.37	-5.62	-6.90
Onshore	749.508	691.062	692.875	653.848	6648.360	6102.481	6361.340	-0.26	-4.07	-7.80
Arunachal Pradesh	4.419	3.612	4.005	3.463	39.205	33.063	36.188	-9.81	-8.64	-18.27
Assam	0.856	0.468	0.000	0.189	7.592	1.149	0.000	-	-	-45.31
Gujarat	16.848	12.143	10.952	11.931	148.922	103.245	103.969	10.87	-0.70	-27.92
Rajasthan	716.706	667.768	672.829	631.453	6357.910	5901.556	6191.733	-0.75	-4.69	-6.83
Tamil Nadu	10.679	7.071	5.089	6.812	94.732	63.468	29.450	38.95	115.51	-33.79
Offshore	153.408	149.543	177.011	151.997	1360.905	1434.802	1624.448	-15.52	-11.67	-2.52
Eastern Offshore	67.521	63.816	79.189	64.326	599.000	629.577	727.478	-19.41	-13.46	-5.49
Gujarat Offshore	25.709	30.981	31.025	31.362	228.064	285.009	289.506	-0.14	-1.55	20.51
Western Offshore	60.178	54.746	66.797	56.309	533.840	520.216	607.464	-18.04	-14.36	-9.03
GRAND TOTAL (1+2+3)	3209.452	2991.060	3055.075	2880.676	28152.591	26934.399	27045.339	-2.10	-0.41	-6.80
Onshore	1586.145	1488.065	1482.498	1422.883	14028.478	4543.706	13234.888	0.38	-65.67	-6.18
Offshore	1623.307	1502.995	1572.577	1457.793	14124.113	4614.199	13810.451	-4.42	-66.59	-7.41

Note: Totals may not tally due to rounding off figures.

^: Includes crude oil production of Tripura

*: Provisional. **: Revised

Reasons for shortfall are indicated in the note.

MINISTRY OF PETROLEUM & NATURAL GAS

Annexure-II

Natural Gas Production during the month of December, 2017 and cumulatively for the period April-December, 2017 vis-à-vis April-December, 2016

(Para 2)

(Qty: Million Cubic Meters)

Name of Undertaking/Unit/State	Planned production during the month	Production during the			Cumulative Production (April-December)			% variation over last year		% variation during the month under review over planned production
		Month under review *	Corresponding month of last year **	Preceding month of current year **	Planned production during current year	Actual production during current year *	Actual production during corresponding period of last year **	During the month under review	Upto the end of the period	
(1)	(2)	(3)	(4)	(5)	(6)	(7)	(8)	(9)	(10)	(11)
1. ONGC	2045.869	2000.791	1926.761	1957.572	17902.370	17651.167	16420.285	3.84	7.50	-2.20
Onshore	453.520	476.501	448.196	468.016	4077.838	4230.656	3819.360	6.32	10.77	5.07
Andhra Pradesh	84.283	82.871	78.312	77.681	717.373	689.553	636.219	5.82	8.38	-1.68
Assam	37.738	41.954	35.063	41.367	331.187	383.268	322.931	19.65	18.68	11.17
Gujarat	114.330	127.352	131.986	124.695	1043.039	1181.944	1083.077	-3.51	9.13	11.39
Rajasthan	0.425	0.432	0.254	0.635	3.767	3.538	2.929	70.08	20.79	1.65
Tamil Nadu	92.977	100.996	88.167	99.812	856.988	895.074	721.909	14.55	23.99	8.62
Tripura	123.767	122.896	114.414	123.826	1125.485	1077.279	1052.295	7.41	2.37	-0.70
Offshore	1592.349	1524.290	1478.565	1489.556	13824.532	13420.511	12600.925	3.09	6.50	-4.27
Eastern Offshore	75.987	41.888	57.279	43.385	609.200	425.131	306.481	-26.87	38.71	-44.87
Western Offshore	1516.363	1482.402	1421.286	1446.171	13215.332	12995.380	12294.444	4.30	5.70	-2.24
2. OIL	252.208	236.974	246.496	235.495	2259.672	2196.982	2211.559	-3.86	-0.66	-6.04
Assam	228.923	216.433	223.350	216.818	2060.447	2031.156	2024.330	-3.10	0.34	-5.46
Arunachal Pradesh	1.085	0.962	1.004	0.932	9.625	8.746	8.943	-4.18	-2.20	-11.34
Rajasthan	22.200	19.579	22.142	17.745	189.600	157.080	178.286	-11.58	-11.89	-11.81
3. DGH (Private / JVC)	673.639	513.593	563.557	521.799	5962.332	4839.396	5253.544	-8.87	-7.88	-23.76
Onshore	122.561	120.120	88.614	110.730	1101.841	1018.649	881.709	35.55	15.53	-1.99
Arunachal Pradesh	19.364	1.693	1.512	1.154	171.781	11.896	11.401	11.97	4.34	-91.26
Assam	0.758	7.691	0.000	5.235	6.487	23.523	0.000	-	-	914.64
Gujarat	3.926	5.999	7.187	5.981	49.663	58.458	68.235	-16.53	-14.33	52.82
Rajasthan	97.149	103.532	79.201	97.199	861.805	914.731	798.592	30.72	14.54	6.57
Tamil Nadu	1.365	1.205	0.714	1.161	12.106	10.041	3.481	68.77	188.45	-11.70
CBM	115.784	70.797	53.135	68.637	994.466	540.875	420.646	33.24	28.58	-38.85
Jharkhand (CBM)	0.305	0.370	0.263	0.364	2.705	3.183	2.181	40.68	45.94	21.31
Madhya Pradesh (CBM)	39.918	26.127	0.755	22.617	354.110	123.783	3.978	3360.53	3011.69	-34.55
West Bengal (CBM)	75.561	44.300	52.117	45.656	637.652	413.909	414.487	-15.00	-0.14	-41.37
Offshore	435.294	322.676	421.808	342.432	3866.025	3279.872	3951.189	-23.50	-16.99	-25.87
Eastern Offshore	278.275	177.703	260.314	178.200	2468.569	1798.580	2459.410	-31.74	-26.87	-36.14
Gujarat Offshore	3.105	8.695	7.106	9.502	32.092	77.378	62.112	22.36	24.58	180.03
Western Offshore	153.914	136.278	154.388	154.730	1365.363	1403.914	1429.667	-11.73	-1.80	-11.46
TOTAL (1+2+3)	2971.716	2751.358	2736.814	2714.866	26124.374	24687.545	23885.388	0.53	3.36	-7.42
CBM	115.784	70.797	53.135	68.637	994.466	540.875	420.646	33.24	28.58	-38.85
Onshore	828.289	833.595	783.306	814.241	7439.351	7446.287	6912.628	6.42	7.72	0.64
Offshore	2027.643	1846.966	1900.373	1831.988	17690.557	16700.383	16552.114	-2.81	0.90	-8.91

Note: Totals may not tally due to rounding off figures.

*: Provisional.

** : Revised

CBM: Coal Bed Methane production.

Reasons for shortfall are indicated in the note.

MINISTRY OF PETROLEUM & NATURAL GAS

Annexure-III

Refinery Production (in terms of crude oil processed) during the month of December, 2017 and cumulatively for the period April-December, 2017 vis-à-vis April-December, 2016

(Para 3)

(Qty: '000' Tonnes)

Name of Undertaking/Unit	Planned production during the month	Production during the			Cumulative Production			% variation over last year		% variation during the month under review over planned production
		Month under review *	Corresponding month of last year	Preceding month of current year **	(April-December)			During the month under	Upto the end of the period	
					Planned production during current year	Actual production during current year *	Actual production during corresponding period of last year **			
(1)	(2)	(3)	(4)	(5)	(6)	(7)	(8)	(9)	(10)	(11)
A. Public Sector	12425.817	12793.629	12098.536	12477.506	103190.473	108059.429	102760.852	5.75	5.16	2.96
1. IOC, Guwahati	72.192	92.350	71.245	90.093	640.411	773.426	651.805	29.62	18.66	27.92
2. IOC, Barauni	554.697	610.057	579.355	542.510	4139.591	4169.280	4927.044	5.30	-15.38	9.98
3. IOC, Gujarat	908.947	1288.821	1129.923	1252.497	9249.967	10115.871	10724.336	14.06	-5.67	41.79
4. IOC, Haldia	670.000	179.705	534.156	661.936	5460.000	5597.513	5799.017	-66.36	-3.47	-73.18
5. IOC, Mathura	805.001	881.406	761.365	802.686	6369.994	6800.443	6892.469	15.77	-1.34	9.49
6. IOC, Digboi	43.000	51.120	45.141	55.397	377.000	497.220	393.518	13.25	26.35	18.88
7. IOC, Panipat	1327.950	1366.788	1328.770	1354.604	11289.266	11621.092	11665.673	2.86	-0.38	2.92
8. IOC, Bongaigaon	203.094	253.999	219.568	138.096	1710.371	1768.122	1880.208	15.68	-5.96	25.06
9. IOC, Paradip	1287.145	1261.648	1012.699	1232.949	9262.579	10505.996	5169.896	24.58	103.21	-1.98
Total IOC	5872.026	5985.894	5682.222	6130.768	48499.179	51848.963	48103.966	5.34	7.79	1.94
10. BPCL, Mumbai	1200.000	1316.918	1262.540	1274.264	9735.000	10276.886	10796.647	4.31	-4.81	9.74
11. BPCL, Kochi	1175.000	1210.988	1045.187	1217.365	9990.000	10164.217	8542.331	15.86	18.99	3.06
Total BPCL	2375.000	2527.906	2307.727	2491.629	19725.000	20441.103	19338.978	9.54	5.70	6.44
12. HPCL, Mumbai	722.767	759.124	758.223	715.446	6411.643	6468.609	6312.787	0.12	2.47	5.03
13. HPCL, Visakh	831.505	809.018	861.976	643.341	7135.992	7177.609	6883.041	-6.14	4.28	-2.70
Total HPCL	1554.272	1568.142	1620.199	1358.787	13547.635	13646.218	13195.828	-3.21	3.41	0.89
14. CPCL, Manali	900.000	895.362	706.655	800.328	7190.000	7612.959	7769.421	26.70	-2.01	-0.52
15. CPCL, CBR	42.466	50.071	40.797	33.849	376.713	363.189	400.970	22.73	-9.42	17.91
Total CPCL	942.466	945.433	747.452	834.177	7566.713	7976.148	8170.391	26.49	-2.38	0.31
16. NRL, Numaligarh	226.652	241.549	257.006	242.574	2011.374	2135.134	1960.563	-6.01	8.90	6.57
17. MRPL, Mangalore	1450.000	1517.435	1476.641	1412.428	11795.000	11951.737	11927.604	2.76	0.20	4.65
18. ONGC, Tatipaka	5.402	7.270	7.289	7.143	45.572	60.125	63.522	-0.26	-5.35	34.58
B. Joint Venture	1468.000	1625.045	1570.986	1216.534	10888.000	10942.450	12697.895	3.44	-13.82	10.70
19. BORL, Bina	525.000	623.952	623.733	203.049	4425.000	5037.819	4677.927	0.04	7.69	18.85
20. HMEL, GGSR, Bhatinda	943.000	1001.093	947.253	1013.485	6463.000	5904.631	8019.968	5.68	-26.38	6.16
C. Private Sector	7710.969	7710.459	7772.042	7531.745	67914.366	68961.978	68432.361	-0.79	0.77	-0.01
21. RIL, Jamnagar	2782.188	2661.358	2782.188	2745.496	24758.921	24721.944	24758.921	-4.34	-0.15	-4.34
22. RIL, SEZ	3212.801	3280.312	3212.801	3078.164	27882.905	28697.023	27882.905	2.10	2.92	2.10
Total RIL	5994.989	5941.670	5994.989	5823.660	52641.826	53418.967	52641.826	-0.89	1.48	-0.89
23. EOL, Vadinar	1715.980	1768.789	1777.053	1708.085	15272.540	15543.011	15790.535	-0.47	-1.57	3.08
TOTAL(A+B+C)	21604.786	22129.133	21441.564	21225.785	181992.838	187963.856	183891.107	3.21	2.21	2.43

Note: 1. Totals may not tally due to rounding off figures.

*: Provisional. **: Revised

2. Target for the year 2017-18 (Month-wise) reconciled.

MINISTRY OF PETROLEUM & NATURAL GAS

Annexure-IV

Refinery-wise Capacity Utilisation during the month of December, 2017 and cumulatively for the period April-December, 2017 vis-à-vis April-December, 2016

(Para 3.4)

(Qty: '000' Tonnes)

Name of Undertaking/Unit	December, 2017			December, 2016			Cumulative (April - December)					
	Prorated Installed Capacity	Actual Crude T'put *	% Utilisation of Installed Capacity	Prorated Installed Capacity	Actual Crude T'put	% Utilisation of Installed Capacity	2017-18			2016-17		
							Prorated Installed Capacity	Actual Crude T'put *	% Utilisation of Installed Capacity	Prorated Installed Capacity	Actual Crude T'put **	% Utilisation of Installed Capacity
(1)	(2)	(3)	(4)	(5)	(6)	(7)	(8)	(9)	(10)	(11)	(12)	(13)
A. Public Sector	12066.00	12793.63	106.03	11440.00	12098.54	105.76	107036.00	108059.43	100.96	98062.00	102760.85	104.79
1. IOC, Guwahati	85.00	92.35	108.65	85.00	71.25	83.82	753.00	773.43	102.71	726.00	651.81	89.78
2. IOC, Barauni	510.00	610.06	119.62	508.00	579.36	114.05	4521.00	4169.28	92.22	4356.00	4927.04	113.11
3. IOC, Gujarat	1164.00	1288.82	110.72	1160.00	1129.92	97.41	10322.00	10115.87	98.00	9947.00	10724.34	107.81
4. IOC, Haldia	637.00	179.71	28.21	635.00	534.16	84.12	5651.00	5597.51	99.05	5445.00	5799.02	106.50
5. IOC, Mathura	679.00	881.41	129.81	678.00	761.37	112.30	6027.00	6800.44	112.83	5808.00	6892.47	118.67
6. IOC, Digboi	55.00	51.12	92.95	55.00	45.14	82.07	490.00	497.22	101.47	472.00	393.52	83.37
7. IOC, Panipat	1274.00	1366.79	107.28	1270.00	1328.77	104.63	11301.00	11621.09	102.83	10890.00	11665.67	107.12
8. IOC, Bongaigaon	200.00	254.00	127.00	199.00	219.57	110.34	1771.00	1768.12	99.84	1706.00	1880.21	110.21
9. IOC, Paradip	1274.00	1261.65	99.03	1270.00	1012.70	0.00	11301.00	10506.00	92.97	10890.00	5169.90	0.00
Total IOC	5877.00	5985.89	101.85	5861.00	5682.22	96.95	52137.00	51848.96	99.45	50241.00	48103.97	95.75
10. BPCL, Mumbai	1019.00	1316.92	129.24	1016.00	1262.54	124.27	9041.00	10276.89	113.67	8712.00	10796.65	123.93
11. BPCL, Kochi	1316.00	1210.99	92.02	805.00	1045.19	129.84	11678.00	10164.22	87.04	6897.00	8542.33	123.86
Total BPCL	2336.00	2527.91	108.22	1821.00	2307.73	126.73	20719.00	20441.10	98.66	15610.00	19338.98	123.89
12. HPCL, Mumbai	637.00	759.12	119.17	551.00	758.22	137.61	5651.00	6468.61	114.47	4719.00	6312.79	133.77
13. HPCL, Visakh	705.00	809.02	114.75	703.00	861.98	122.61	6253.00	7177.61	114.79	6026.00	6883.04	114.22
Total HPCL	1342.00	1568.14	116.85	1254.00	1620.20	129.20	11904.00	13646.22	114.64	10745.00	13195.83	122.81
14. CPCL, Manali	892.00	895.36	100.38	889.00	706.66	79.49	7911.00	7612.96	96.23	7623.00	7769.42	101.92
15. CPCL, CBR	85.00	50.07	58.91	85.00	40.80	48.00	753.00	363.19	48.23	726.00	400.97	55.23
Total CPCL	977.00	945.43	96.77	974.00	747.45	76.74	8664.00	7976.15	92.06	8349.00	8170.39	97.86
16. NRL, Numaligarh	255.00	241.55	94.73	254.00	257.01	101.18	2260.00	2135.13	94.47	2178.00	1960.56	90.02
17. MRPL, Mangalore	1274.00	1517.44	119.11	1270.00	1476.64	116.27	11301.00	11951.74	105.76	10890.00	11927.60	109.53
18. ONGC, Tatipaka	6.00	7.27	121.16	6.00	7.29	121.48	50.00	60.13	120.25	48.00	63.52	132.34
B. Joint Venture	1469.00	1625.05	110.62	1270.00	1570.99	123.70	13034.00	10942.45	83.95	10890.00	12697.89	116.60
19. BORL, Bina	510.00	623.95	122.34	508.00	623.73	122.78	4521.00	5037.82	111.43	4356.00	4677.93	107.39
20. HMEL, GGSR, Bhatinda	960.00	1001.09	104.28	762.00	947.25	124.31	8514.00	5904.63	69.35	6534.00	8019.97	122.74
C. Private Sector	7491.00	7710.46	102.93	6776.00	7772.04	114.70	66452.00	68961.98	103.78	58082.00	68432.36	117.82
21. RIL, Jamnagar	2803.00	2661.36	94.95	2795.00	2782.19	99.54	24863.00	24721.94	99.43	23959.00	24758.92	103.34
22. RIL, SEZ	2990.00	3280.31	109.71	2287.00	3212.80	140.48	26521.00	28697.02	108.20	19603.00	27882.90	142.24
Total RIL	5792.00	5941.67	102.58	5082.00	5994.99	117.97	51384.00	53418.97	103.96	43562.00	52641.83	120.84
23. EOL, Vadinar	1699.00	1768.79	104.11	1694.00	1777.05	104.90	15068.00	15543.01	103.15	14521.00	15790.54	108.74
TOTAL(A+B+C)	21026.00	22129.13	105.25	19486.00	21441.56	110.04	186522.00	187963.86	100.77	167034.00	183891.11	110.09

*: Provisional. **:Revised

Note: Refinery capacity as on 01.12.2017 is 247.566 MMT

MINISTRY OF PETROLEUM & NATURAL GAS

Production of Petroleum Products during the month of December, 2017 and cumulatively for the period April-December, 2017 vis-à-vis April-December, 2016

Annexure-V

(Para 3.4)

(Qty: '000' Tonnes)

Name of Undertaking/Unit	Planned production during the month	Production during the			Cumulative Production			% variation over last year		% variation during the month under review over planned production
		Month under review *	Corresponding month of last year	Preceding month of current year **	(April-December)			During the month under review	Upto the end of the period	
					Planned production during current year	Actual production during current year*	Actual production during corresponding period of last year**			
(1)	(2)	(3)	(4)	(5)	(6)	(7)	(8)	(9)	(10)	(11)
I. Refinery										
A. Public Sector	11674.531	12112.112	11402.054	11716.318	96478.977	102124.301	96484.169	6.23	5.85	3.75
1. IOC, Guwahati	76.884	103.753	88.960	101.681	682.256	858.497	845.744	16.63	1.51	34.95
2. IOC, Barauni	521.136	576.277	539.267	469.162	3780.325	3876.435	4487.513	6.86	-13.62	10.58
3. IOC, Gujarat	875.679	1249.613	1097.448	1163.674	8791.386	9707.271	10078.744	13.87	-3.69	42.70
4. IOC, Haldia	634.679	154.527	451.367	598.043	5126.981	5215.808	5231.791	-65.76	-0.31	-75.65
5. IOC, Mathura	780.077	835.600	779.750	776.137	6166.505	6733.188	6640.102	7.16	1.40	7.12
6. IOC, Digboi	44.083	54.727	45.232	59.064	379.676	500.860	401.071	20.99	24.88	24.15
7. IOC, Panipat	1335.412	1442.511	1371.522	1380.252	11282.887	11653.105	11754.690	5.18	-0.86	8.02
8. IOC, Bongaigaon	183.218	221.774	214.380	162.421	1569.308	1604.886	1700.065	3.45	-5.60	21.04
9. IOC, Paradip	1149.004	1151.941	780.916	1113.859	8092.192	9445.486	4259.651	47.51	121.74	0.26
Total IOC	5600.173	5790.723	5368.842	5824.293	45871.516	49595.536	45399.371	7.86	9.24	3.40
10. BPCL, Mumbai	1147.012	1268.953	1223.198	1257.688	9304.053	9968.121	10407.068	3.74	-4.22	10.63
11. BPCL, Kochi	1080.285	1153.927	971.375	1109.228	9287.804	9625.151	8073.120	18.79	19.22	6.82
Total BPCL	2227.297	2422.880	2194.573	2366.916	18591.858	19593.272	18480.188	10.40	6.02	8.78
12. HPCL, Mumbai	666.973	703.207	714.379	677.321	5916.662	6046.799	5884.414	-1.56	2.76	5.43
13. HPCL, Visakh	766.206	726.700	823.276	584.865	6556.221	6626.487	6319.705	-11.73	4.85	-5.16
Total HPCL	1433.179	1429.907	1537.655	1262.186	12472.883	12673.286	12204.119	-7.01	3.84	-0.23
14. CPCL, Manali	812.804	815.009	663.094	732.350	6492.529	6922.566	7167.306	22.91	-3.41	0.27
15. CPCL, CBR	42.672	50.143	41.067	34.221	378.538	365.781	402.437	22.10	-9.11	17.51
Total CPCL	855.476	865.152	704.161	766.571	6871.067	7288.347	7569.743	22.86	-3.72	1.13
16. NRL, Numaligarh	226.283	239.619	262.203	230.609	2007.982	2145.509	1946.799	-8.61	10.21	5.89
17. MRPL, Mangalore	1326.854	1356.956	1327.877	1259.103	10619.211	10771.453	10823.192	2.19	-0.48	2.27
18. ONGC, Tatipaka	5.270	6.875	6.743	6.640	44.460	56.898	60.757	1.96	-6.35	30.45
B. Joint Venture	1372.550	1526.433	1445.847	1115.403	10118.900	10164.208	11817.596	5.57	-13.99	11.21
19. BORL, Bina	474.450	563.416	577.267	153.816	3991.100	4588.930	4228.492	-2.40	8.52	18.75
20. HMEL, GGSR, Bhatinda	898.100	963.017	868.580	961.587	6127.800	5575.278	7589.104	10.87	-26.54	7.23
C. Private Sector	7896.758	8500.295	7939.870	8123.617	70108.115	73221.229	70585.279	7.06	3.73	7.64
21. RIL, Jamnagar	2753.182	2861.021	2753.182	2767.861	24778.568	24943.772	24778.568	3.92	0.67	3.92
22. RIL, SEZ	3490.243	3961.319	3490.243	3756.318	30635.547	33403.864	30635.547	13.50	9.04	13.50
Total RIL	6243.425	6822.340	6243.425	6524.179	55414.115	58347.636	55414.115	9.27	5.29	9.27
23. EOL, Vadinar	1653.333	1677.955	1696.445	1599.438	14694.000	14873.593	15171.164	-1.09	-1.96	1.49
TOTAL(A+B+C)	20943.840	22138.840	20787.771	20955.338	176705.991	185509.738	178887.044	6.50	3.70	5.71
II. Fractionators										
ONGC	273.322	292.645	301.341	274.334	2440.150	2446.204	2322.908	-2.89	5.31	7.07
OIL	3.200	3.304	3.172	3.176	22.700	24.607	25.896	4.16	-4.98	3.25
GAIL	90.604	99.801	98.417	110.924	789.426	954.364	831.488	1.41	14.78	10.15
D. Total Fractionators	367.126	395.750	402.930	388.434	3252.276	3425.175	3180.292	-1.78	7.70	7.80
Grand Total (A+B+C+D)	21310.965	22534.590	21190.701	21343.772	179958.267	188934.913	182067.336	6.34	3.77	5.74

Note: 1. Totals may not tally due to rounding off figures.

*: Provisional. **: Revised

2. Target for the year 2017-18 (Month-wise) reconciled.