

Government of India
Ministry of Petroleum and Natural Gas
Economic & Statistics Division

New Delhi

Dated the 20th September, 2017

Monthly Production Report
August, 2017

Crude Oil

1. Crude oil production¹ during August, 2017 was 3019.94 TMT which is 4.93% lower than target and 1.56% lower when compared with August 2016. Cumulative crude oil production during April-August, 2017 was 15104.60 TMT which is 3.11% lower than target for the period and 0.27% lower than production during corresponding period of last year. Unit-wise and state-wise crude oil production is given at Annexure-I. Unit-wise crude oil production for the month of August, 2017 and cumulatively for the period April-August, 2017 vis-à-vis same period of last year has been shown in Table-1 and month-wise in Figure-1.

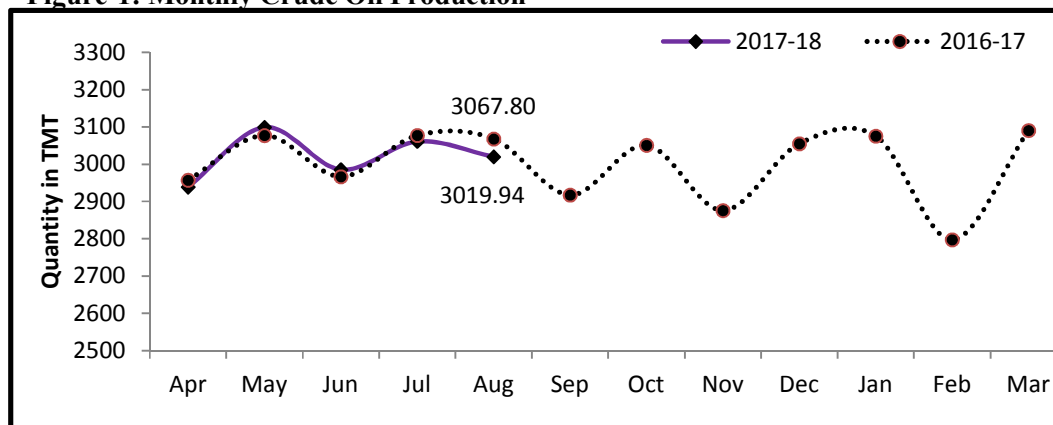
Table-1: Crude Oil Production (in TMT)

| Oil Company | Target | August (Month) | | | | April-August (Cumulative) | | | |
|--------------|----------------------|----------------|----------------|----------------|------------------|---------------------------|-----------------|-----------------|------------------|
| | 2017-18 (Apr-Mar) | 2017-18 | | 2016-17 | % over last year | 2017-18 | | 2016-17 | % over last year |
| | | Target | Prod.* | Prod. | | Target | Prod.* | Prod. | |
| ONGC | 23071.00 | 1956.69 | 1898.47 | 1865.31 | 101.78 | 9569.08 | 9457.74 | 9225.22 | 102.52 |
| OIL | 3734.00 | 316.98 | 288.48 | 272.08 | 106.03 | 1564.87 | 1416.81 | 1342.94 | 105.50 |
| PSC Fields | 10562.00 | 903.03 | 832.98 | 930.42 | 89.53 | 4455.49 | 4230.06 | 4578.05 | 92.40 |
| Total | 37367.00 | 3176.70 | 3019.94 | 3067.80 | 98.44 | 15589.44 | 15104.60 | 15146.22 | 99.73 |

Note: Totals may not tally due to rounding off.

*: Provisional

Figure-1: Monthly Crude Oil Production



¹Including condensate

Unit-wise production details with reasons for shortfall are as under:

1.1 Crude oil production by ONGC during August, 2017 was 1898.47 TMT which is 2.98% lower than the monthly target but 1.78% higher when compared with August, 2016. Cumulative crude oil production by ONGC during April-August, 2017 was 9457.74 TMT which is 1.16% lower than target for the period but 2.52% higher than production during corresponding period of last year. Reasons for shortfall in production are as under:

- Offshore: Natural decline and increase in water cut from matured fields of Western Offshore. Due to severe monsoon and harsh weather conditions, wells at unmanned platforms could not be attended / monitored which affected regular operations like Gas Lift De-optimization, ESP failure & minimum well monitoring / stimulation etc.
- Onshore: Power shut down in Mehsana (heavy rain) and Assam Assets.

1.2 Crude oil production by OIL during August, 2017 was 288.48 TMT which is 8.99% lower than monthly target but 6.03% higher than production in August, 2016. Cumulative crude oil production by OIL during April-August, 2017 was 1416.81 TMT which is 9.46% lower than target for the period but 5.50% higher than production during corresponding period of last year. Reasons for shortfall in production are as under:

- Less than planned achievement due to higher decline in production potential of wells mainly in Greater Hapjan and Greater Chandmari areas.
- Less than planned contribution from work over wells.

1.3 Crude oil production by Pvt/JVs during August, 2017 was 832.98 TMT which is 7.76% lower than the monthly target and 10.47% lower than August, 2016. Cumulative crude oil production by Pvt/JVs during April-August, 2017 was 4230.06 TMT which is 5.06% lower than target for the period and 7.60% lower than the production during corresponding period of last year. Reasons for shortfall in production are as under:

- RJ-ON-90/1 (CIL): Around 120 wells are closed either due to high water cut or require WOJ. Poor reservoir performance of Bhagyam. Production stopped from Guda, Kaameshwari West, Raageshwari and Saraswati due to non-availability of tanker since July'17.
- Panna-Mukta (Shell): Certain wells closed due to integrity issues in Aug'17. Also, natural decline in Panna-Mukta.
- CY-ONN-2002/2 (ONGC): Test production from 5 oil wells. PML not yet granted.
- CB-ONN-2004/2 (ONGC): Underperformance of wells.

Natural Gas

2. Natural gas production during August, 2017 was 2772.94 MMSCM which is 5.38% lower than the target for the month but 3.69% higher when compared with August, 2016.

Cumulative natural gas production during April-August, 2017 was 13689.67 MMSCM which is 5.39% lower than target for the period but 4.31% higher than the production during corresponding period of last year. Unit-wise and state-wise natural gas production is given at Annexure-II. Unit-wise natural gas production for the month of August, 2017 and cumulatively for the period April-August, 2017 vis-à-vis same period of last year has been shown in Table-2 and month-wise in Figure-2.

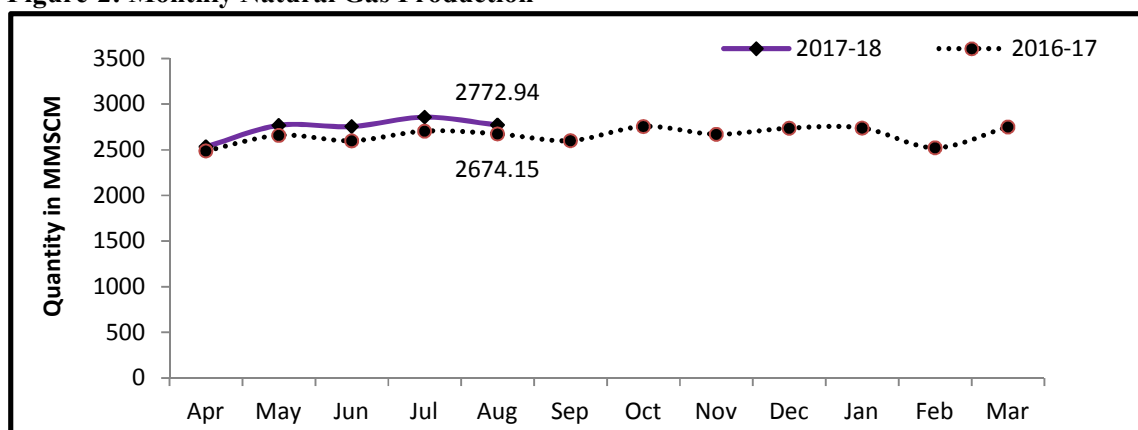
Table-2: Natural Gas Production (MMSCM)

| Oil Company | Target 2017-18 (Apr-Mar) | August (Month) | | | | April-August (Cumulative) | | | |
|--------------|--------------------------|----------------|----------------|----------------|------------------|---------------------------|-----------------|-----------------|------------------|
| | | 2017-18 | | 2016-17 | % over last year | 2017-18 | | 2016-17 | % over last year |
| | | Target | Prod.* | Prod. | | Target | Prod.* | Prod. | |
| ONGC | 24208.00 | 1992.35 | 1953.25 | 1845.50 | 105.84 | 9884.16 | 9737.62 | 8841.62 | 110.13 |
| OIL | 3000.00 | 264.97 | 261.47 | 244.05 | 107.14 | 1273.19 | 1235.22 | 1230.88 | 100.35 |
| PSC Fields | 8034.00 | 673.18 | 558.22 | 584.59 | 95.49 | 3312.04 | 2716.83 | 3050.93 | 89.05 |
| Total | 35242.00 | 2930.51 | 2772.94 | 2674.15 | 103.69 | 14469.39 | 13689.67 | 13123.43 | 104.31 |

Note: Totals may not tally due to rounding off.

*: Provisional

Figure-2: Monthly Natural Gas Production



2.1 Natural gas production by ONGC during August, 2017 was 1953.25 MMSCM which is 1.96% lower than the monthly target and 5.84% higher when compared with August, 2016. Cumulative natural gas production by ONGC during April-August, 2017 was 9737.62 MMSCM which is 1.48% lower than the cumulative target but 10.13% higher than the production during the corresponding period of the last year. Reasons for shortfall in production are as under:

- Offshore: Bassein field gas production from BPB installation affected (13th -29th Aug'17) for rectifying pipeline gas leakage from 24 inch discharge line.
- Onshore: OTPC, Tripura plant shut down for 20 days since 19.08.2017.

2.2 Natural gas production by OIL during August, 2017 was 261.47 MMSCM which is 1.32% lower than the monthly target but 7.14% higher than August, 2016. Cumulative natural gas production by OIL during April-August, 2017 was 1235.22 MMSCM which is 2.98% lower than the cumulative target but 0.35% higher than the production during the corresponding period of last year. Reasons for shortfall in production are as under:

- Low production potential availability of old wells due to water ingress, sand ingress and unexpected down hole problems.
- Unplanned shut down of gas turbines of RRVUNL.

2.3 Natural gas production by Pvt/JVs during August, 2017 was 558.22 MMSCM which is 17.08% lower than the monthly target and 4.51% lower when compared with August, 2016. Cumulative natural gas production by Pvt/JVs during April-August, 2017 was 2716.83 MMSCM which is 17.97% lower than the cumulative target and 10.95% lower than the production during the corresponding period of last year. Reasons for shortfall in production are as under:

- Underperformance of wells in KG- OSN-2001/3 (GSPC)
- Sohagpur West (RIL): Underperformance of CBM wells.
- Raniganj East (Essar): Few wells closed for planned maintenance and refrac jobs
- AAP-ON-94/1 (HOEC): Production deferred due to delay in grant of PML. Production commenced from 26th Aug'17
- RJ-ON-90/1 (CIL): Around 120 wells are closed either due to high water cut or require WOJ.
- Closure of 2 wells in D1D3 field and 1 well in MA field in KG-DWN-98/3 (RIL).

3. Refinery Production (in terms of crude oil processed)

Refinery production during August, 2017 was 20451.48 TMT which is 4.36% higher than the target for the month and 0.79% higher when compared with August, 2016. Cumulative production during April-August, 2017 was 101881.81 TMT which is 4.02% higher than the target for the period and 0.10% higher than the production during corresponding period of last year. Unit-wise production is given at Annexure-III. Company-wise production for the month of August, 2017 and cumulatively for the period April-August, 2017 vis-à-vis same period of last year has been shown in Table-3 and month-wise in Figure-3.

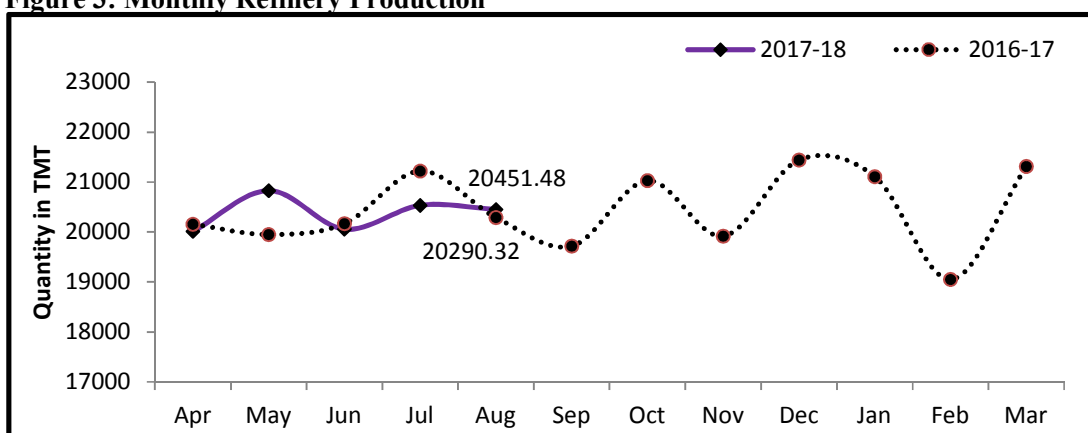
Table 3: Refinery Production (TMT)

| Oil Company | Target | August (Month) | | | | April-August (Cumulative) | | | |
|----------------|-------------------|-----------------|-----------------|-----------------|------------------|---------------------------|------------------|------------------|------------------|
| | 2017-18 (Apr-Mar) | 2017-18 | | 2016-17 | % over last year | 2017-18 | | 2016-17 | % over last year |
| | | Target | Prod.* | Prod. | | Target | Prod.* | Prod. | |
| CPSE | 139090 | 10552.05 | 11197.45 | 10985.15 | 101.93 | 55071.56 | 58851.85 | 56599.51 | 103.98 |
| IOCL | 65750 | 4814.00 | 5293.07 | 4953.45 | 106.86 | 25503.00 | 28191.72 | 26736.96 | 105.44 |
| BPCL | 27000 | 2150.00 | 2128.41 | 2150.36 | 98.98 | 10500.00 | 10866.36 | 10485.93 | 103.63 |
| HPCL | 17309 | 1323.53 | 1575.77 | 1253.23 | 125.74 | 7060.63 | 7630.03 | 7152.95 | 106.67 |
| CPCL | 10300 | 932.47 | 944.76 | 1006.67 | 93.85 | 4439.59 | 4507.82 | 4645.52 | 97.04 |
| NRL | 2670 | 226.65 | 233.25 | 239.04 | 97.58 | 1119.01 | 1176.76 | 1163.62 | 101.13 |
| MRPL | 16000 | 1100.00 | 1017.27 | 1376.01 | 73.93 | 6425.00 | 6448.29 | 6380.23 | 101.07 |
| ONGC | 62 | 5.40 | 4.93 | 6.40 | 77.02 | 24.32 | 30.87 | 34.29 | 90.02 |
| JVs | 15201 | 1345.00 | 1507.39 | 1521.67 | 99.06 | 5376.00 | 4864.70 | 7358.17 | 66.11 |
| BORL | 6000 | 525.00 | 620.35 | 587.60 | 105.57 | 2625.00 | 3004.83 | 2771.82 | 108.41 |
| HMEL | 9201 | 820.00 | 887.04 | 934.07 | 94.97 | 2751.00 | 1859.87 | 4586.34 | 40.55 |
| Private | 90480 | 7699.47 | 7746.64 | 7783.51 | 99.53 | 37495.57 | 38165.26 | 37826.87 | 100.89 |
| RIL | 70174 | 6002.57 | 5967.65 | 6002.57 | 99.42 | 29068.16 | 29489.23 | 29068.16 | 101.45 |
| EOL | 20306 | 1696.90 | 1778.99 | 1780.94 | 99.89 | 8427.41 | 8676.04 | 8758.71 | 99.06 |
| TOTAL | 244771 | 19596.52 | 20451.48 | 20290.32 | 100.79 | 97943.12 | 101881.81 | 101784.55 | 100.10 |

Note: Totals may not tally due to rounding off.

*: Provisional

Figure 3: Monthly Refinery Production



3.1 CPSE Refineries' production during August, 2017 was 11197.45 TMT which is 6.12% higher than the target for the month and 1.93% higher than the production achieved in the corresponding month of last year. Cumulative production by CPSE refineries during April-August, 2017 was 58851.85 TMT which is 6.86% higher than the target for the period and 3.98% higher than the production during corresponding period of last year. Reasons for shortfall of refinery production in some CPSE refineries are as under:

- IOCL, Panipat: Throughput lower due to deferment of M&I shutdown from Jul'17 to Jul-Aug'17.

- IOCL, Bongaigaon: High product stock due to restriction in rake movement on account of floods in Assam/Bihar/Bengal.
- BPCL, Mumbai: Lower due to planned outage of CDU3/Hydrogen / Hydrocracker units' turnaround for revamp.
- MRPL, Mangalore: Advancement of planned shutdown by 3 days for turnaround of DCU and CDU-1.

- 3.2 Production in JV refineries during August, 2017 was 1507.39 TMT which is 12.07% higher than the target for the month but 0.94% lower than the production achieved in the corresponding month of last year. Cumulative production by JVs refineries during April-August, 2017 was 4864.70 TMT which is 9.51% lower than the target for the period and 33.89% lower than the production during corresponding period of last year.
- 3.3 Production in private refineries during August, 2017 was 7746.64 TMT which is 0.61% higher than the target for the month but 0.47% lower when compared with August, 2016. Cumulative production by private refineries during April-August, 2017 was 38165.26 TMT which is 1.79% higher than the target for the period and 0.89% higher than the production during corresponding period of last year.
- 3.4 Refinery-wise details of the capacity utilization and production of petroleum products during the month of August, 2017 and cumulatively for the period April-August, 2017 vis-à-vis April-August, 2016 are given at Annexures - IV and V respectively.

MINISTRY OF PETROLEUM & NATURAL GAS

Annexure-I

Crude Oil Production during the month of August, 2017 and cumulatively for the period April-August, 2017 vis-à-vis April-August, 2016

(Para 1)

(Qty: '000' Tonnes)

| Name of Undertaking/Unit/State | Planned production during the month | Production during the | | | Cumulative Production | | | % variation over last year | | % variation during the month under review over planned production |
|--------------------------------|-------------------------------------|-----------------------|-------------------------------------|------------------------------------|--|---|---|-------------------------------|----------------------------|---|
| | | Month under review * | Corresponding month of last year ** | Preceding month of current year ** | (April-August) | | | During the month under review | Upto the end of the period | |
| | | | | | Planned production during current year | Actual production during current year * | Actual production during corresponding period of last year ** | | | |
| (1) | (2) | (3) | (4) | (5) | (6) | (7) | (8) | (9) | (10) | (11) |
| 1. ONGC | 1956.686 | 1898.474 | 1865.308 | 1917.558 | 9569.081 | 9457.737 | 9225.221 | 1.78 | 2.52 | -2.98 |
| Onshore | 516.706 | 514.195 | 504.910 | 501.618 | 2519.676 | 2522.108 | 2452.080 | 1.84 | 2.86 | -0.49 |
| Andhra Pradesh | 28.749 | 29.058 | 22.023 | 27.400 | 127.508 | 139.556 | 106.512 | 31.94 | 31.02 | - |
| Assam ^ | 85.338 | 83.183 | 80.603 | 83.517 | 420.087 | 412.466 | 391.268 | 3.20 | 5.42 | -2.53 |
| Gujarat | 380.949 | 379.091 | 382.954 | 367.529 | 1869.482 | 1859.308 | 1857.736 | -1.01 | 0.08 | -0.49 |
| Tamil Nadu | 21.670 | 22.863 | 19.330 | 23.172 | 102.599 | 110.778 | 96.564 | 18.28 | 14.72 | 5.50 |
| Offshore | 1439.979 | 1384.279 | 1360.398 | 1415.940 | 7049.405 | 6935.629 | 6773.141 | 1.76 | 2.40 | -3.87 |
| Eastern Offshore | 6.436 | 0.782 | 1.314 | 0.791 | 32.882 | 3.698 | 6.310 | -40.49 | -41.39 | -87.85 |
| Western Offshore | 1299.012 | 1268.903 | 1245.421 | 1285.477 | 6351.071 | 6342.500 | 6202.498 | 1.89 | 2.26 | -2.32 |
| Condensates | 134.531 | 114.594 | 113.663 | 129.672 | 665.451 | 589.431 | 564.333 | 0.82 | 4.45 | -14.82 |
| 2. OIL (Onshore) | 316.978 | 288.480 | 272.075 | 288.313 | 1564.871 | 1416.807 | 1342.943 | 6.03 | 5.50 | -8.99 |
| Assam | 316.395 | 287.748 | 271.385 | 287.516 | 1561.945 | 1413.238 | 1339.663 | 6.03 | 5.49 | -9.05 |
| Arunachal Pradesh | 0.583 | 0.630 | 0.690 | 0.642 | 2.926 | 3.153 | 3.280 | -8.70 | -3.87 | 8.06 |
| Rajasthan (Heavy Oil) | - | 0.102 | 0.000 | 0.155 | - | 0.416 | 0.000 | - | - | - |
| 3. DGH (Private / JVC) | 903.032 | 832.983 | 930.419 | 855.244 | 4455.490 | 4230.057 | 4578.052 | -10.47 | -7.60 | -7.76 |
| Onshore | 749.621 | 671.391 | 747.575 | 690.856 | 3698.325 | 3416.858 | 3636.024 | -10.19 | -6.03 | -10.44 |
| Arunachal Pradesh | 4.419 | 3.785 | 4.041 | 3.781 | 21.812 | 18.797 | 19.801 | -6.34 | -5.07 | -14.36 |
| Assam | 0.856 | 0.039 | 0.000 | 0.000 | 4.224 | 0.039 | 0.000 | - | - | -95.44 |
| Gujarat | 16.960 | 11.104 | 11.723 | 11.087 | 82.276 | 55.595 | 58.082 | -5.28 | -4.28 | -34.53 |
| Rajasthan | 716.706 | 649.136 | 728.597 | 668.564 | 3537.308 | 3307.089 | 3548.044 | -10.91 | -6.79 | -9.43 |
| Tamil Nadu | 10.679 | 7.327 | 3.214 | 7.424 | 52.705 | 35.338 | 10.097 | 127.97 | 249.99 | -31.39 |
| Offshore | 153.411 | 161.592 | 182.844 | 164.388 | 757.165 | 813.199 | 942.028 | -11.62 | -13.68 | 5.33 |
| Eastern Offshore | 67.524 | 66.246 | 82.820 | 70.607 | 333.269 | 362.516 | 411.221 | -20.01 | -11.84 | -1.89 |
| Gujarat Offshore | 25.709 | 33.959 | 33.048 | 33.283 | 126.887 | 158.651 | 167.064 | 2.76 | -5.04 | 32.09 |
| Western Offshore | 60.178 | 61.387 | 66.976 | 60.498 | 297.009 | 292.032 | 363.743 | -8.34 | -19.71 | 2.01 |
| GRAND TOTAL (1+2+3) | 3176.695 | 3019.937 | 3067.802 | 3061.115 | 15589.442 | 15104.601 | 15146.216 | -1.56 | -0.27 | -4.93 |
| Onshore | 1583.305 | 1474.066 | 1524.560 | 1480.787 | 7782.872 | 4543.706 | 7431.047 | -3.31 | -38.86 | -6.90 |
| Offshore | 1593.390 | 1545.871 | 1543.242 | 1580.328 | 7806.569 | 4614.199 | 7715.169 | 0.17 | -40.19 | -2.98 |

Note: Totals may not tally due to rounding off figures.

^: Includes crude oil production of Tripura

*: Provisional. **: Revised

Reasons for shortfall are indicated in the note.

MINISTRY OF PETROLEUM & NATURAL GAS

Annexure-II

Natural Gas Production during the month of August, 2017 and cumulatively for the period April-August, 2017 vis-à-vis April-August, 2016

(Para 2)

(Qty: Million Cubic Meters)

| Name of Undertaking/Unit/State | Planned production during the month | Production during the | | | Cumulative Production (April-August) | | | % variation over last year | | % variation during the month under review over planned production |
|--------------------------------|-------------------------------------|-----------------------|-------------------------------------|------------------------------------|--|---|---|-------------------------------|----------------------------|---|
| | | Month under review * | Corresponding month of last year ** | Preceding month of current year ** | Planned production during current year | Actual production during current year * | Actual production during corresponding period of last year ** | During the month under review | Upto the end of the period | |
| (1) | (2) | (3) | (4) | (5) | (6) | (7) | (8) | (9) | (10) | (11) |
| 1. ONGC | 1992.354 | 1953.245 | 1845.503 | 2055.358 | 9884.162 | 9737.621 | 8841.620 | 5.84 | 10.13 | -1.96 |
| Onshore | 459.158 | 455.774 | 432.613 | 487.748 | 2285.147 | 2347.923 | 2042.470 | 5.35 | 14.96 | -0.74 |
| Andhra Pradesh | 80.489 | 77.555 | 75.657 | 76.525 | 394.141 | 370.040 | 329.678 | 2.51 | 12.24 | -3.65 |
| Assam | 37.562 | 45.728 | 36.880 | 43.536 | 182.775 | 212.400 | 182.367 | 23.99 | 16.47 | - |
| Gujarat | 116.952 | 133.200 | 122.119 | 134.272 | 585.438 | 671.901 | 563.530 | 9.07 | 19.23 | 13.89 |
| Rajasthan | 0.425 | 0.444 | 0.276 | 0.262 | 2.096 | 1.624 | 1.412 | 60.87 | 15.01 | 4.47 |
| Tamil Nadu | 96.694 | 102.169 | 77.640 | 102.859 | 486.259 | 492.092 | 388.391 | 31.59 | 26.70 | 5.66 |
| Tripura | 127.036 | 96.678 | 120.041 | 130.294 | 634.440 | 599.866 | 577.092 | -19.46 | 3.95 | -23.90 |
| Offshore | 1533.196 | 1497.471 | 1412.890 | 1567.610 | 7599.014 | 7389.698 | 6799.150 | 5.99 | 8.69 | -2.33 |
| Eastern Offshore | 78.196 | 46.171 | 28.056 | 49.234 | 307.017 | 248.287 | 99.244 | 64.57 | 150.18 | -40.96 |
| Western Offshore | 1454.999 | 1451.300 | 1384.834 | 1518.376 | 7291.998 | 7141.411 | 6699.906 | 4.80 | 6.59 | -0.25 |
| 2. OIL | 264.974 | 261.471 | 244.052 | 250.225 | 1273.187 | 1235.218 | 1230.880 | 7.14 | 0.35 | -1.32 |
| Assam | 243.505 | 244.436 | 225.083 | 235.339 | 1167.228 | 1147.558 | 1124.396 | 8.60 | 2.06 | 0.38 |
| Arunachal Pradesh | 1.085 | 1.011 | 1.010 | 1.028 | 5.355 | 4.953 | 4.965 | 0.10 | -0.24 | -6.82 |
| Rajasthan | 20.384 | 16.024 | 17.959 | 13.858 | 100.604 | 82.707 | 101.519 | -10.77 | -18.53 | -21.39 |
| 3. DGH (Private / JVC) | 673.178 | 558.222 | 584.591 | 553.154 | 3312.040 | 2716.831 | 3050.932 | -4.51 | -10.95 | -17.08 |
| Onshore | 125.019 | 112.761 | 102.997 | 112.309 | 617.207 | 554.303 | 523.240 | 9.48 | 5.94 | -9.81 |
| Arunachal Pradesh | 19.364 | 1.261 | 1.232 | 1.363 | 95.573 | 6.633 | 6.089 | 2.35 | 8.93 | -93.49 |
| Assam | 0.718 | 0.607 | 0.000 | 0.000 | 3.530 | 0.607 | 0.000 | - | - | -15.46 |
| Gujarat | 6.424 | 6.602 | 7.701 | 6.659 | 31.892 | 33.711 | 39.497 | -14.27 | -14.65 | 2.78 |
| Rajasthan | 97.149 | 103.084 | 93.752 | 103.102 | 479.477 | 508.037 | 476.664 | 9.95 | 6.58 | 6.11 |
| Tamil Nadu | 1.365 | 1.207 | 0.312 | 1.185 | 6.735 | 5.315 | 0.990 | 286.86 | 436.87 | -11.55 |
| CBM | 112.670 | 65.247 | 48.235 | 59.639 | 542.181 | 269.838 | 218.647 | 35.27 | 23.41 | -42.09 |
| Jharkhand (CBM) | 0.305 | 0.389 | 0.259 | 0.316 | 1.505 | 1.744 | 1.157 | 50.19 | 50.73 | 27.54 |
| Madhya Pradesh (CBM) | 39.918 | 17.219 | 0.317 | 11.444 | 197.014 | 37.256 | 1.810 | 5331.86 | 1958.34 | -56.86 |
| West Bengal (CBM) | 72.447 | 47.639 | 47.659 | 47.879 | 343.662 | 230.838 | 215.680 | -0.04 | 7.03 | -34.24 |
| Offshore | 435.488 | 380.214 | 433.359 | 381.206 | 2152.652 | 1892.690 | 2309.045 | -12.26 | -18.03 | -12.69 |
| Eastern Offshore | 278.275 | 197.453 | 272.955 | 204.044 | 1373.422 | 1067.102 | 1432.211 | -27.66 | -25.49 | -29.04 |
| Gujarat Offshore | 3.300 | 9.525 | 7.039 | 9.666 | 19.592 | 40.455 | 34.107 | 35.32 | 18.61 | 188.66 |
| Western Offshore | 153.914 | 173.236 | 153.365 | 167.496 | 759.639 | 785.133 | 842.727 | 12.96 | -6.83 | 12.55 |
| TOTAL (1+2+3) | 2930.505 | 2772.938 | 2674.146 | 2858.737 | 14469.389 | 13689.670 | 13123.432 | 3.69 | 4.31 | -5.38 |
| CBM | 112.670 | 65.247 | 48.235 | 59.639 | 542.181 | 269.838 | 218.647 | 35.27 | 23.41 | -42.09 |
| Onshore | 849.151 | 830.006 | 779.662 | 850.282 | 4175.541 | 4137.444 | 3796.590 | 6.46 | 8.98 | -2.25 |
| Offshore | 1968.684 | 1877.685 | 1846.249 | 1948.816 | 9751.667 | 9282.388 | 9108.195 | 1.70 | 1.91 | -4.62 |

Note: Totals may not tally due to rounding off figures.

*: Provisional.

** : Revised

CBM: Coal Bed Methane production.

Reasons for shortfall are indicated in the note.

MINISTRY OF PETROLEUM & NATURAL GAS

Annexure-III

Refinery Production (in terms of crude oil processed) during the month of August, 2017 and cumulatively for the period April-August, 2017 vis-à-vis April-August, 2016

(Para 3)

(Qty: '000' Tonnes)

| Name of Undertaking/Unit | Planned production during the month | Production during the | | | Cumulative Production | | | % variation over last year | | % variation during the month under review over planned production |
|--------------------------|-------------------------------------|-----------------------|----------------------------------|------------------------------------|--|---|---|----------------------------|----------------------------|---|
| | | Month under review * | Corresponding month of last year | Preceding month of current year ** | (April-August) | | | During the month under | Upto the end of the period | |
| | | | | | Planned production during current year | Actual production during current year * | Actual production during corresponding period of last year ** | | | |
| (1) | (2) | (3) | (4) | (5) | (6) | (7) | (8) | (9) | (10) | (11) |
| A. Public Sector | 10552.053 | 11197.446 | 10985.151 | 11964.150 | 55071.556 | 58851.851 | 56599.507 | 1.93 | 3.98 | 6.12 |
| 1. IOC, Guwahati | 50.000 | 86.622 | 66.320 | 86.175 | 347.000 | 411.023 | 367.978 | 30.61 | 11.70 | 73.24 |
| 2. IOC, Barauni | 0.000 | 118.718 | 570.971 | 303.629 | 1970.000 | 2064.047 | 2830.455 | -79.21 | -27.08 | - |
| 3. IOC, Gujarat | 1165.000 | 1239.887 | 1228.656 | 885.480 | 5040.000 | 5203.976 | 6190.845 | 0.91 | -15.94 | 6.43 |
| 4. IOC, Haldia | 665.000 | 670.089 | 630.331 | 690.844 | 3380.000 | 3400.165 | 3376.879 | 6.31 | 0.69 | 0.77 |
| 5. IOC, Mathura | 350.000 | 723.211 | 701.061 | 802.476 | 3450.000 | 3973.142 | 3864.021 | 3.16 | 2.82 | 106.63 |
| 6. IOC, Digboi | 44.000 | 58.427 | 40.318 | 59.763 | 212.000 | 278.292 | 204.795 | 44.92 | 35.89 | 32.79 |
| 7. IOC, Panipat | 1280.000 | 1113.774 | 1048.493 | 1001.548 | 5944.000 | 6154.057 | 6507.154 | 6.23 | -5.43 | -12.99 |
| 8. IOC, Bongaigaon | 190.000 | 173.977 | 202.454 | 233.855 | 980.000 | 984.301 | 1043.103 | -14.07 | -5.64 | -8.43 |
| 9. IOC, Paradip | 1070.000 | 1108.364 | 464.844 | 1314.050 | 4180.000 | 5722.720 | 2351.727 | 138.44 | 143.34 | 3.59 |
| Total IOC | 4814.000 | 5293.069 | 4953.448 | 5377.820 | 25503.000 | 28191.723 | 26736.957 | 6.86 | 5.44 | 9.95 |
| 10. BPCL, Mumbai | 1200.000 | 1231.365 | 1212.476 | 1210.053 | 5310.000 | 5526.162 | 5900.906 | 1.56 | -6.35 | 2.61 |
| 11. BPCL, Kochi | 950.000 | 897.043 | 937.884 | 1189.855 | 5190.000 | 5340.202 | 4585.027 | -4.35 | 16.47 | -5.57 |
| Total BPCL | 2150.000 | 2128.408 | 2150.360 | 2399.908 | 10500.000 | 10866.364 | 10485.933 | -1.02 | 3.63 | -1.00 |
| 12. HPCL, Mumbai | 679.959 | 742.636 | 736.633 | 738.213 | 3353.906 | 3612.725 | 3488.390 | 0.81 | 3.56 | 9.22 |
| 13. HPCL, Visakh | 643.575 | 833.131 | 516.592 | 825.659 | 3706.725 | 4017.300 | 3664.560 | 61.27 | 9.63 | 29.45 |
| Total HPCL | 1323.534 | 1575.767 | 1253.225 | 1563.872 | 7060.631 | 7630.025 | 7152.950 | 25.74 | 6.67 | 19.06 |
| 14. CPCL, Manali | 890.000 | 910.570 | 960.684 | 931.911 | 4230.000 | 4305.074 | 4412.395 | -5.22 | -2.43 | 2.31 |
| 15. CPCL, CBR | 42.466 | 34.185 | 45.986 | 42.221 | 209.589 | 202.745 | 233.123 | -25.66 | -13.03 | -19.50 |
| Total CPCL | 932.466 | 944.755 | 1006.670 | 974.132 | 4439.589 | 4507.819 | 4645.518 | -6.15 | -2.96 | 1.32 |
| 16. NRL, Numaligarh | 226.652 | 233.253 | 239.041 | 238.994 | 1119.013 | 1176.758 | 1163.624 | -2.42 | 1.13 | 2.91 |
| 17. MRPL, Mangalore | 1100.000 | 1017.265 | 1376.007 | 1403.876 | 6425.000 | 6448.293 | 6380.233 | -26.07 | 1.07 | -7.52 |
| 18. ONGC, Tatipaka | 5.402 | 4.929 | 6.400 | 5.548 | 24.323 | 30.869 | 34.292 | -22.98 | -9.98 | -8.75 |
| B. Joint Venture | 1345.000 | 1507.392 | 1521.666 | 762.468 | 5376.000 | 4864.697 | 7358.165 | -0.94 | -33.89 | 12.07 |
| 19. BORL, Bina | 525.000 | 620.353 | 587.600 | 611.279 | 2625.000 | 3004.830 | 2771.824 | 5.57 | 8.41 | 18.16 |
| 20. HMEL, GGSR, Bhatinda | 820.000 | 887.039 | 934.066 | 151.189 | 2751.000 | 1859.867 | 4586.341 | -5.03 | -59.45 | 8.18 |
| C. Private Sector | 7699.471 | 7746.639 | 7783.506 | 7805.331 | 37495.568 | 38165.261 | 37826.875 | -0.47 | 0.89 | 0.61 |
| 21. RIL, Jamnagar | 2778.744 | 2806.072 | 2778.744 | 2790.367 | 13907.549 | 13626.485 | 13907.549 | 0.98 | -2.02 | 0.98 |
| 22. RIL, SEZ | 3223.823 | 3161.574 | 3223.823 | 3244.159 | 15160.612 | 15862.740 | 15160.612 | -1.93 | 4.63 | -1.93 |
| Total RIL | 6002.567 | 5967.646 | 6002.567 | 6034.526 | 29068.161 | 29489.225 | 29068.161 | -0.58 | 1.45 | -0.58 |
| 23. EOL, Vadinar | 1696.904 | 1778.993 | 1780.939 | 1770.805 | 8427.407 | 8676.036 | 8758.714 | -0.11 | -0.94 | 4.84 |
| TOTAL(A+B+C) | 19596.524 | 20451.477 | 20290.323 | 20531.949 | 97943.124 | 101881.808 | 101784.547 | 0.79 | 0.10 | 4.36 |

Note: Totals may not tally due to rounding off figures. *: Provisional. **: Revised

Reasons for shortfall are indicated in the note.

MINISTRY OF PETROLEUM & NATURAL GAS

Annexure-IV

Refinery-wise Capacity Utilisation during the month of August, 2017 and cumulatively for the period April-August, 2017 vis-à-vis April-August, 2016

(Para 3.4)

(Qty: '000' Tonnes)

| Name of Undertaking/Unit | August, 2017 | | | August, 2016 | | | Cumulative (April - August) | | | | | |
|--------------------------|-----------------------------|----------------------|-------------------------------------|-----------------------------|--------------------|-------------------------------------|-----------------------------|----------------------|-------------------------------------|-----------------------------|-----------------------|-------------------------------------|
| | Prorated Installed Capacity | Actual Crude T'put * | % Utilisation of Installed Capacity | Prorated Installed Capacity | Actual Crude T'put | % Utilisation of Installed Capacity | 2017-18 | | | 2016-17 | | |
| | | | | | | | Prorated Installed Capacity | Actual Crude T'put * | % Utilisation of Installed Capacity | Prorated Installed Capacity | Actual Crude T'put ** | % Utilisation of Installed Capacity |
| (1) | (2) | (3) | (4) | (5) | (6) | (7) | (8) | (9) | (10) | (11) | (12) | (13) |
| A. Public Sector | 11805.00 | 11197.45 | 94.85 | 11440.00 | 10985.15 | 96.02 | 58264.00 | 58851.85 | 101.01 | 56617.00 | 56599.51 | 99.97 |
| 1. IOC, Guwahati | 85.00 | 86.62 | 101.91 | 85.00 | 66.32 | 78.02 | 419.00 | 411.02 | 98.10 | 419.00 | 367.98 | 87.82 |
| 2. IOC, Barauni | 510.00 | 118.72 | 23.28 | 508.00 | 570.97 | 112.40 | 2515.00 | 2064.05 | 82.07 | 2515.00 | 2830.46 | 112.54 |
| 3. IOC, Gujarat | 1164.00 | 1239.89 | 106.52 | 1160.00 | 1228.66 | 105.92 | 5743.00 | 5203.98 | 90.61 | 5743.00 | 6190.85 | 107.80 |
| 4. IOC, Haldia | 637.00 | 670.09 | 105.19 | 635.00 | 630.33 | 99.26 | 3144.00 | 3400.17 | 108.15 | 3144.00 | 3376.88 | 107.41 |
| 5. IOC, Mathura | 679.00 | 723.21 | 106.51 | 678.00 | 701.06 | 103.40 | 3353.00 | 3973.14 | 118.50 | 3353.00 | 3864.02 | 115.24 |
| 6. IOC, Digboi | 55.00 | 58.43 | 106.23 | 55.00 | 40.32 | 73.31 | 272.00 | 278.29 | 102.31 | 272.00 | 204.80 | 75.29 |
| 7. IOC, Panipat | 1274.00 | 1113.77 | 87.42 | 1270.00 | 1048.49 | 82.56 | 6288.00 | 6154.06 | 97.87 | 6288.00 | 6507.15 | 103.49 |
| 8. IOC, Bongaigaon | 200.00 | 173.98 | 86.99 | 199.00 | 202.45 | 101.74 | 985.00 | 984.30 | 99.93 | 985.00 | 1043.10 | 105.90 |
| 9. IOC, Paradip | 1274.00 | 1108.36 | 87.00 | 1270.00 | 464.84 | 0.00 | 6288.00 | 5722.72 | 91.01 | 6288.00 | 2351.73 | 0.00 |
| Total IOC | 5877.00 | 5293.07 | 90.06 | 5861.00 | 4953.45 | 84.52 | 29007.00 | 28191.72 | 97.19 | 29007.00 | 26736.96 | 92.17 |
| 10. BPCL, Mumbai | 1019.00 | 1231.37 | 120.84 | 1016.00 | 1212.48 | 119.34 | 5030.00 | 5526.16 | 109.86 | 5030.00 | 5900.91 | 117.31 |
| 11. BPCL, Kochi | 1053.00 | 897.04 | 85.19 | 805.00 | 937.88 | 116.51 | 5198.00 | 5340.20 | 102.74 | 3982.00 | 4585.03 | 115.14 |
| Total BPCL | 2072.00 | 2128.41 | 102.72 | 1821.00 | 2150.36 | 118.09 | 10228.00 | 10866.36 | 106.24 | 9012.00 | 10485.93 | 116.36 |
| 12. HPCL, Mumbai | 637.00 | 742.64 | 116.58 | 551.00 | 736.63 | 133.69 | 3144.00 | 3612.73 | 114.91 | 2725.00 | 3488.39 | 128.01 |
| 13. HPCL, Visakh | 707.00 | 833.13 | 117.84 | 703.00 | 516.59 | 73.48 | 3492.00 | 4017.30 | 115.04 | 3479.00 | 3664.56 | 105.33 |
| Total HPCL | 1344.00 | 1575.77 | 117.24 | 1254.00 | 1253.23 | 99.94 | 6636.00 | 7630.03 | 114.98 | 6204.00 | 7152.95 | 115.30 |
| 14. CPCL, Manali | 892.00 | 910.57 | 102.08 | 889.00 | 960.68 | 108.06 | 4401.00 | 4305.07 | 97.82 | 4401.00 | 4412.40 | 100.26 |
| 15. CPCL, CBR | 85.00 | 34.19 | 40.22 | 85.00 | 45.99 | 54.10 | 419.00 | 202.75 | 48.39 | 419.00 | 233.12 | 55.64 |
| Total CPCL | 977.00 | 944.76 | 96.70 | 974.00 | 1006.67 | 103.35 | 4821.00 | 4507.82 | 93.50 | 4821.00 | 4645.52 | 96.36 |
| 16. NRL, Numaligarh | 255.00 | 233.25 | 91.47 | 254.00 | 239.04 | 94.11 | 1258.00 | 1176.76 | 93.54 | 1258.00 | 1163.62 | 92.50 |
| 17. MRPL, Mangalore | 1274.00 | 1017.27 | 79.85 | 1270.00 | 1376.01 | 108.35 | 6288.00 | 6448.29 | 102.55 | 6288.00 | 6380.23 | 101.47 |
| 18. ONGC, Tatipaka | 6.00 | 4.93 | 82.15 | 6.00 | 6.40 | 106.66 | 28.00 | 30.87 | 110.25 | 28.00 | 34.29 | 122.47 |
| B. Joint Venture | 1274.00 | 1507.39 | 118.32 | 1270.00 | 1521.67 | 119.82 | 6288.00 | 4864.70 | 77.36 | 6288.00 | 7358.17 | 117.02 |
| 19. BORL, Bina | 510.00 | 620.35 | 121.64 | 508.00 | 587.60 | 115.67 | 2515.00 | 3004.83 | 119.48 | 2515.00 | 2771.82 | 110.21 |
| 20. HREL, GGSR, Bhatinda | 764.00 | 887.04 | 116.10 | 762.00 | 934.07 | 122.58 | 3773.00 | 1859.87 | 49.29 | 3773.00 | 4586.34 | 121.56 |
| C. Private Sector | 6795.00 | 7746.64 | 114.00 | 6776.00 | 7783.51 | 114.87 | 33534.00 | 38165.26 | 113.81 | 33534.00 | 37826.87 | 112.80 |
| 21. RIL, Jamnagar | 2803.00 | 2806.07 | 100.11 | 2795.00 | 2778.74 | 99.42 | 13833.00 | 13626.49 | 98.51 | 13833.00 | 13907.55 | 100.54 |
| 22. RIL, SEZ | 2293.00 | 3161.57 | 137.88 | 2287.00 | 3223.82 | 140.96 | 11318.00 | 15862.74 | 140.15 | 11318.00 | 15160.61 | 133.95 |
| Total RIL | 5096.00 | 5967.65 | 117.10 | 5082.00 | 6002.57 | 118.11 | 25151.00 | 29489.23 | 117.25 | 25151.00 | 29068.16 | 115.57 |
| 23. EOL, Vadinar | 1699.00 | 1778.99 | 104.71 | 1694.00 | 1780.94 | 105.13 | 8384.00 | 8676.04 | 103.48 | 8384.00 | 8758.71 | 104.47 |
| TOTAL(A+B+C) | 19874.00 | 20451.48 | 102.91 | 19486.00 | 20290.32 | 104.13 | 98086.00 | 101881.81 | 103.87 | 96439.00 | 101784.55 | 105.54 |

*: Provisional. **:Revised

MINISTRY OF PETROLEUM & NATURAL GAS

Production of Petroleum Products during the month of August, 2017 and cumulatively for the period April-August, 2017 vis-à-vis April-August, 2016

Annexure-V

(Para 3.4)

(Qty: '000' Tonnes)

| Name of Undertaking/Unit | Planned production during the month | Production during the | | | Cumulative Production | | | % variation over last year | | % variation during the month under review over planned production |
|-------------------------------|-------------------------------------|-----------------------|----------------------------------|------------------------------------|--|--|--|-------------------------------|----------------------------|---|
| | | Month under review * | Corresponding month of last year | Preceding month of current year ** | (April-August) | | | During the month under review | Upto the end of the period | |
| | | | | | Planned production during current year | Actual production during current year* | Actual production during corresponding period of last year** | | | |
| (1) | (2) | (3) | (4) | (5) | (6) | (7) | (8) | (9) | (10) | (11) |
| I. Refinery | | | | | | | | | | |
| A. Public Sector | 9769.727 | 10544.869 | 10225.461 | 11331.744 | 51393.083 | 55515.235 | 52960.166 | 3.12 | 4.82 | 7.93 |
| 1. IOC, Guwahati | 53.265 | 100.486 | 91.798 | 108.304 | 369.657 | 457.638 | 482.318 | 9.46 | -5.12 | 88.65 |
| 2. IOC, Barauni | 0.000 | 48.169 | 520.608 | 268.663 | 1813.531 | 1894.450 | 2544.214 | -90.75 | -25.54 | - |
| 3. IOC, Gujarat | 1108.322 | 1143.805 | 1120.554 | 818.126 | 4794.800 | 5009.273 | 5788.264 | 2.07 | -13.46 | 3.20 |
| 4. IOC, Haldia | 616.383 | 612.117 | 567.647 | 637.289 | 3132.895 | 3157.946 | 3032.096 | 7.83 | 4.15 | -0.69 |
| 5. IOC, Mathura | 339.258 | 728.732 | 736.481 | 842.721 | 3344.116 | 3971.814 | 3766.586 | -1.05 | 5.45 | 114.80 |
| 6. IOC, Digboi | 44.352 | 55.729 | 43.926 | 58.774 | 213.696 | 271.300 | 210.235 | 26.87 | 29.05 | 25.65 |
| 7. IOC, Panipat | 1283.984 | 1051.914 | 958.808 | 961.534 | 5962.501 | 5953.689 | 6437.092 | 9.71 | -7.51 | -18.07 |
| 8. IOC, Bongaigaon | 174.660 | 177.853 | 150.618 | 211.169 | 900.876 | 845.143 | 885.886 | 18.08 | -4.60 | 1.83 |
| 9. IOC, Paradip | 900.528 | 988.682 | 438.308 | 1173.836 | 3517.952 | 5133.444 | 1984.764 | 125.57 | 158.64 | 9.79 |
| Total IOC | 4520.752 | 4907.487 | 4628.748 | 5080.416 | 24050.024 | 26694.697 | 25131.455 | 6.02 | 6.22 | 8.55 |
| 10. BPCL, Mumbai | 1147.251 | 1196.236 | 1169.329 | 1179.747 | 5068.617 | 5355.081 | 5669.361 | 2.30 | -5.54 | 4.27 |
| 11. BPCL, Kochi | 887.488 | 922.801 | 889.438 | 1103.832 | 4879.427 | 5162.562 | 4327.062 | 3.75 | 19.31 | 3.98 |
| Total BPCL | 2034.740 | 2119.037 | 2058.767 | 2283.579 | 9948.044 | 10517.643 | 9996.423 | 2.93 | 5.21 | 4.14 |
| 12. HPCL, Mumbai | 629.698 | 706.876 | 671.418 | 708.839 | 3108.242 | 3386.783 | 3218.246 | 5.28 | 5.24 | 12.26 |
| 13. HPCL, Visakh | 576.257 | 782.427 | 456.193 | 814.599 | 3392.942 | 3764.262 | 3353.616 | 71.51 | 12.24 | 35.78 |
| Total HPCL | 1205.955 | 1489.303 | 1127.611 | 1523.438 | 6501.184 | 7151.045 | 6571.862 | 32.08 | 8.81 | 23.50 |
| 14. CPCL, Manali | 808.174 | 823.836 | 876.834 | 861.002 | 3832.292 | 3905.515 | 4056.115 | -6.04 | -3.71 | 1.94 |
| 15. CPCL, CBR | 42.672 | 34.590 | 46.345 | 42.511 | 210.605 | 204.412 | 234.230 | -25.36 | -12.73 | -18.94 |
| Total CPCL | 850.846 | 858.426 | 923.179 | 903.513 | 4042.897 | 4109.927 | 4290.345 | -7.01 | -4.21 | 0.89 |
| 16. NRL, Numaligarh | 223.743 | 218.278 | 225.300 | 242.222 | 1104.432 | 1203.112 | 1144.510 | -3.12 | 5.12 | -2.44 |
| 17. MRPL, Mangalore | 928.421 | 947.756 | 1255.742 | 1293.255 | 5722.771 | 5809.105 | 5792.661 | -24.53 | 0.28 | 2.08 |
| 18. ONGC, Tatipaka | 5.270 | 4.582 | 6.114 | 5.321 | 23.730 | 29.706 | 32.909 | -25.05 | -9.73 | -13.05 |
| B. Joint Venture | 1258.950 | 1349.988 | 1446.630 | 747.397 | 4960.250 | 4511.914 | 6907.009 | -6.68 | -34.68 | 7.23 |
| 19. BORL, Bina | 474.450 | 558.416 | 570.705 | 554.638 | 2372.250 | 2772.109 | 2495.937 | -2.15 | 11.06 | 17.70 |
| 20. HMEL, GGSR, Bhatinda | 784.500 | 791.572 | 875.925 | 192.759 | 2588.000 | 1739.805 | 4411.072 | -9.63 | -60.56 | 0.90 |
| C. Private Sector | 8019.232 | 8299.196 | 8085.682 | 7716.780 | 38983.587 | 40003.945 | 39310.406 | 2.64 | 1.76 | 3.49 |
| 21. RIL, Jamnagar | 2866.693 | 2881.130 | 2866.692 | 2536.511 | 13982.410 | 13529.091 | 13982.412 | 0.50 | -3.24 | 0.50 |
| 22. RIL, SEZ | 3521.156 | 3687.932 | 3521.156 | 3455.490 | 16897.938 | 18164.462 | 16897.939 | 4.74 | 7.50 | 4.74 |
| Total RIL | 6387.849 | 6569.062 | 6387.848 | 5992.001 | 30880.348 | 31693.553 | 30880.351 | 2.84 | 2.63 | 2.84 |
| 23. EOL, Vadinar | 1631.383 | 1730.134 | 1697.834 | 1724.779 | 8103.239 | 8310.392 | 8430.055 | 1.90 | -1.42 | 6.05 |
| TOTAL(A+B+C) | 19047.909 | 20194.053 | 19757.773 | 19795.921 | 95336.920 | 100031.094 | 99177.580 | 2.21 | 0.86 | 6.02 |
| II. Fractionators | | | | | | | | | | |
| ONGC | 285.858 | 276.535 | 263.755 | 300.830 | 1403.072 | 1330.879 | 1262.075 | 4.85 | 5.45 | -3.26 |
| OIL | 3.000 | 3.175 | 2.752 | 3.238 | 10.400 | 11.713 | 13.692 | 15.37 | -14.45 | 5.83 |
| GAIL | 82.848 | 110.748 | 94.017 | 110.362 | 408.894 | 515.030 | 445.272 | 17.80 | 15.67 | 33.68 |
| D. Total Fractionators | 371.706 | 390.458 | 360.524 | 414.430 | 1822.366 | 1857.622 | 1721.039 | 8.30 | 7.94 | 5.04 |
| Grand Total (A+B+C+D) | 19419.615 | 20584.511 | 20118.296 | 20210.351 | 97159.286 | 101888.716 | 100898.620 | 2.32 | 0.98 | 6.00 |

Note: Totals may not tally due to rounding off figures.

*: Provisional. **: Revised