

**Government of India**  
**Ministry of Petroleum and Natural Gas**  
**Economic & Statistics Division**

\*\*\*\*\*

New Delhi  
Dated the May, 2017

**Monthly Production Report**  
**April 2017**

**Crude Oil**

1. Crude oil production<sup>1</sup> during April 2017 was 2938.85 TMT which is 2.01% lower than monthly target and 0.62% lower than the production achieved in April 2016. Unit-wise and state-wise crude oil production is given at Annexure-I. Unit-wise crude oil production for the month of April, 2017 vis-à-vis April, 2016 has been shown in Table-1 and month-wise in Figure-1.

**Table-1: Crude Oil Production (in TMT)**

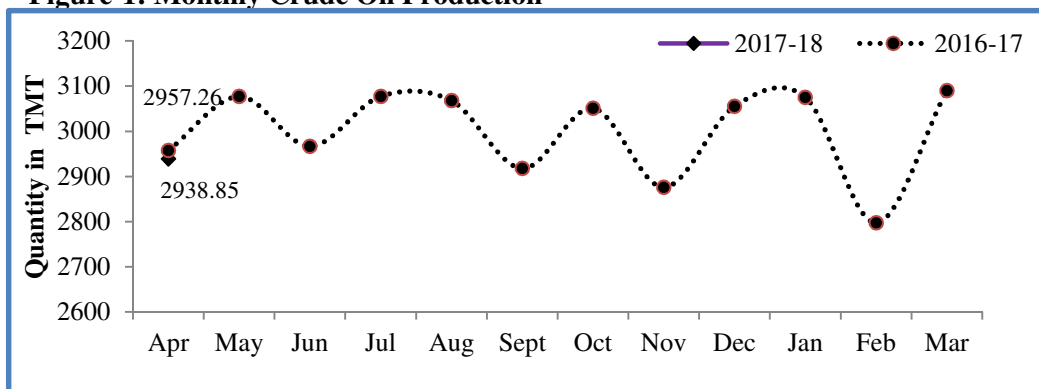
Oil Company	Target	April (Month)			% over last year
	2017-18 (Apr-Mar)*	2017-18		2016-17	
		Target*	Prod.*	Prod.	
ONGC	22776	1845.65	1847.16	1801.95	102.51
OIL	3641	280.00	273.24	261.41	104.53
PSC Fields	10631	873.55	818.45	893.90	91.56
<b>Total</b>	<b>37048</b>	<b>2999.21</b>	<b>2938.85</b>	<b>2957.26</b>	<b>99.38</b>

Note: 1. Target for the year 2017-18 as reported by CPSEs is provisional, as MoU target for the year 2017-18 is yet to be finalized.

2. Totals may not tally due to rounding off.

\*: Provisional

**Figure-1: Monthly Crude Oil Production**



Unit-wise production details with reasons for shortfall have been given in following sub-sections:

<sup>1</sup> Including condensate

1.1 Crude oil production by ONGC during April, 2017 was 1847.16 TMT which is 0.08% higher than the monthly target and 2.51% higher when compared with April, 2016.

1.2 Crude oil production by OIL during April, 2017 was 273.24 TMT which is 2.42% lower than monthly target but 4.53% higher than production in April, 2016. Reasons for shortfall in production are as under:

- ❖ Less than planned contribution from high producing areas like Greater Hapjan, Shalmari, Chandmari and Moran fields primarily on account of rise in water cut.
- ❖ Less than planned contribution from new drilling wells and work over wells.

1.3 Crude oil production by Pvt/JVs during April, 2017 was 818.45 TMT which is 6.31% lower than the monthly target and 8.44% lower than April, 2016. Reasons for shortfall in production are as under:

- ❖ RJ-ON-90/1: Bhagyam production less due to 33 KV OHL rectification works. Mangala 70 wells shutdown for work over. Few high water cut wells closed at Mangala, poor reservoir performance of Bhagyam.
- ❖ Panna-Mukta: Planned shutdown from 19-27.04.2017
- ❖ Natural Decline in Ravva & CB-OS/2

## Natural Gas

2 Natural gas production during April, 2017 was 2532.73 MMSCM which is 9.19% lower than the target for the month but 1.80% higher when compared with April, 2016. Unit-wise and state-wise natural gas production is given at Annexure-II. Unit-wise crude oil production for the month of April, 2017 vis-à-vis April, 2016 has been shown in Table-2 and month-wise in Figure-2.

**Table-2: Natural Gas Production (MMSCM)**

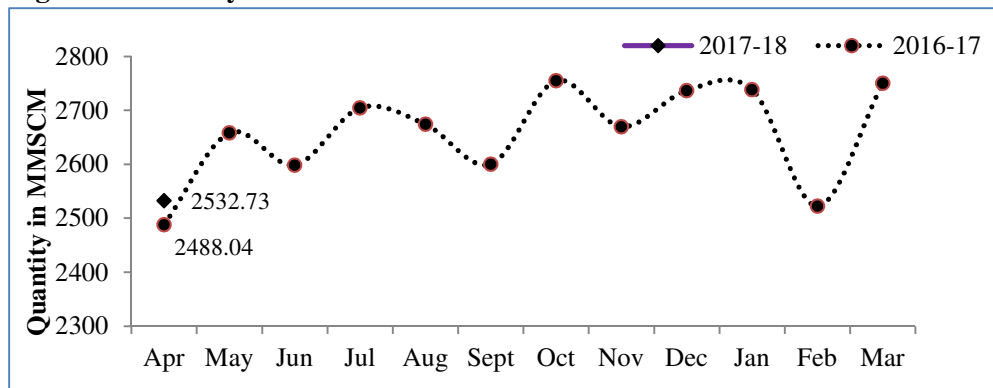
Oil Company	Target	April (Month)			
	2017-18 (Apr-Mar)*	2017-18		2016-17	% over last year
		Target*	Prod.*	Prod.	
ONGC	24544	1899.06	1790.07	1630.92	109.76
OIL	2933	243.55	241.28	250.35	96.38
PSC Fields	7926	646.50	501.39	606.77	82.63
<b>Total</b>	<b>35403</b>	<b>2789.11</b>	<b>2532.73</b>	<b>2488.04</b>	<b>101.80</b>

Note: 1. Target for the year 2017-18 as reported by CPSEs is provisional, as MoU Target for the year 2017-18 is yet to be finalized.

2. Totals may not tally due to rounding off.

\*: Provisional

**Figure-2: Monthly Natural Gas Production**



- 2.1 Natural gas production by ONGC during April, 2017 was 1790.07 MMSCM which is 5.74% lower than the monthly target but 9.76% higher when compared with April, 2016. Shortfall in production was mainly due to shutdown of BPA Process Platform.
- 2.2 Natural gas production by OIL during April, 2017 was 241.28 MMSCM which is 0.93% lower than the monthly target and 3.62% lower than April, 2016.
- 2.3 Natural gas production by Pvt/JVs during April, 2017 was 501.39 MMSCM which is 22.45% lower than the monthly target and 17.37% lower when compared with April, 2016. Reasons for shortfall in production are as under:

- ❖ Underperformance of wells in KG- OSN-2001/3
- ❖ Underperformance of Sohagpur West CBM block, few wells closed for planned maintenance in Raniganj East CBM block.
- ❖ RJ-ON-90/1: Bhagyam production less due to 33 KV OHL rectification works. Mangala 70 wells shutdown for work over. Few high water cut wells closed at Mangala, poor reservoir performance of Bhagyam.
- ❖ AAP-ON-94/1 (HOEC): Production deferred due to delay in grant of PML.
- ❖ Closure of 2 wells in D1D3 field in KG-DWN-98/3.
- ❖ Panna-Mukta: Planned shutdown.

### **Refinery Production (in terms of crude oil processed)**

- 3 Refinery production during April, 2017 was 20013.86 TMT which is 0.22% higher than the target for the month but 0.70% lower when compared with April, 2016. Unit-wise production is given at Annexure-III. Company-wise production for the month of April, 2017 vis-à-vis same period of last year has been shown in Table-3 and month-wise in Figure-3.

**Table 3: Refinery Production (TMT)**

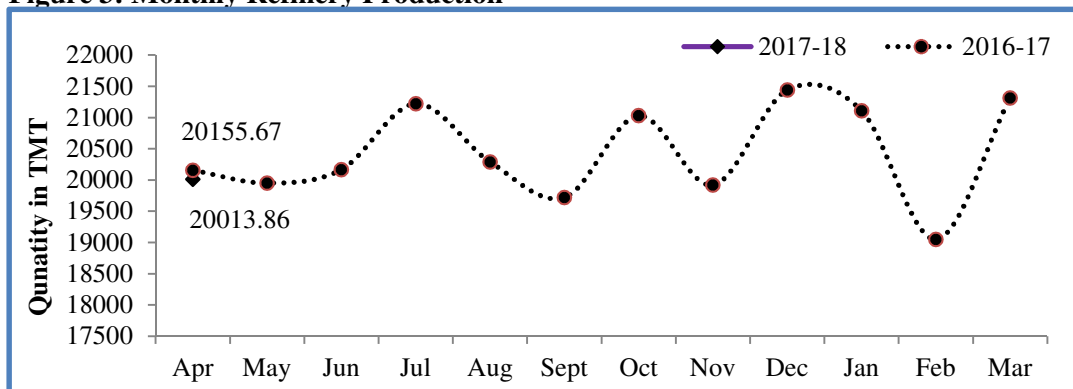
Oil Company	Target	April (Month)			% over last year
	2017-18 (Apr-Mar)*	2017-18		2016-17	
		Target*	Prod.*	Prod.	
<b>CPSEs</b>	<b>139090</b>	<b>11206.00</b>	<b>11153.76</b>	<b>11136.58</b>	<b>100.15</b>
IOCL	65750	5542.00	5532.31	5313.07	104.13
BPCL	27000	1950.00	1970.89	2040.84	96.57
HPCL	17309	1348.00	1450.14	1517.69	95.55
CPCL	10300	866.00	720.91	875.74	82.32
NRL	2670	220.00	230.90	216.53	106.64
MRPL	16000	1275.00	1242.75	1165.91	106.59
ONGC	62	5.00	5.86	6.80	86.17
<b>JVs</b>	<b>15201</b>	<b>1239.00</b>	<b>1372.44</b>	<b>1453.77</b>	<b>94.41</b>
BORL	6000	525.00	550.80	533.58	103.23
HMEL	9201	714.00	821.64	920.19	89.29
<b>Private</b>	<b>90480</b>	<b>7525.00</b>	<b>7487.66</b>	<b>7565.32</b>	<b>98.97</b>
RIL	70174	5847.00	5800.15	5846.48	99.21
EOL	20306	1678.00	1687.51	1718.85	98.18
<b>Total</b>	<b>244771</b>	<b>19970.00</b>	<b>20013.86</b>	<b>20155.67</b>	<b>99.30</b>

Note: 1. MoU Target for the year 2017-18 is yet to be finalized.

2. Totals may not tally due to rounding off.

\*: Provisional

**Figure 3: Monthly Refinery Production**



3.1 CPSE Refineries' production during April, 2017 was 11153.76 TMT which is 0.47% lower than the target for the month but 0.15% higher than the production achieved in the corresponding month of last year. Reasons for shortfall of refinery production in some CPSE refineries are as under:

- ❖ IOCL, Paradip: Throughput restricted due to maintenance works in SRU
- ❖ IOCL, Haldia: Throughput is restricted due to high VGO stock and low crude availability due to pilferage in crude oil pipe-line.
- ❖ BPCL, Mumbai: Planned outage of CDU3 & HCU for turnaround & revamp.
- ❖ HPCL, Visakh: Unplanned shutdown of CDU – II.

- ❖ CPCL, Manali: Lower than target due to shutdown of OHCU/HGU on account of Instrument Air failure and also exchanger leak in HGU.
- ❖ CPCL, CBR: Product upliftment constraints on account of BS-4 norms.

- 3.2 Production in JV refineries during April, 2017 was 1372.44 TMT which is 10.77% higher than the target for the month but 5.59% lower than the production achieved in the corresponding month of last year.
- 3.3 Production in private refineries during April, 2017 was 7487.66 TMT which is 0.50% lower than the target for the month and 1.03% lower when compared with April, 2016.
- 3.4 Refinery-wise details of the capacity utilization and production of petroleum products during the month of April, 2017 vis-à-vis April, 2016 are given at Annexures-IV and V respectively.

\*\*\*\*\*

## Annexure-I

## MINISTRY OF PETROLEUM &amp; NATURAL GAS

(Para 1)

## Crude Oil Production during the month of April, 2017 vis-a-vis April, 2016

(in TMT)

Name of Undertaking/Unit/State	Planned production during the month*	Production during the		% variation during the month under review over last year's production in corresponding month	% variation during the month under review over planned production during the corresponding month
		Month under review *	Corresponding month of last year **		
(1)	(2)	(3)	(4)	(5)	(6)
<b>1. ONGC</b>	<b>1845.652</b>	<b>1847.157</b>	<b>1801.951</b>	<b>2.51</b>	<b>0.08</b>
<b>Onshore</b>	<b>487.095</b>	<b>498.482</b>	<b>478.626</b>	<b>4.15</b>	<b>2.34</b>
Andhra Pradesh	23.547	28.955	20.881	38.67	22.97
Assam ^	82.482	80.028	77.273	3.57	-2.98
Gujarat	362.487	368.348	360.760	2.10	1.62
Tamil Nadu	18.579	21.151	19.712	7.30	13.84
<b>Offshore</b>	<b>1358.557</b>	<b>1348.675</b>	<b>1323.325</b>	<b>1.92</b>	<b>-0.73</b>
Eastern Offshore	6.675	0.778	1.621	-52.00	-88.34
Western Offshore	1227.630	1240.293	1225.682	1.19	1.03
Condensates	124.252	107.604	96.022	12.06	-13.40
<b>2. OIL (Onshore)</b>	<b>280.004</b>	<b>273.236</b>	<b>261.407</b>	<b>4.53</b>	<b>-2.42</b>
Assam	279.424	272.614	260.763	4.54	-2.44
Arunachal Pradesh	0.580	0.622	0.644	-3.42	7.24
<b>3. DGH (Private / JVs)</b>	<b>873.553</b>	<b>818.452</b>	<b>893.900</b>	<b>-8.44</b>	<b>-6.31</b>
<b>Onshore</b>	<b>725.088</b>	<b>676.768</b>	<b>709.558</b>	<b>-4.62</b>	<b>-6.66</b>
Arunachal Pradesh	4.277	3.776	3.913	-3.50	-11.71
Assam	0.828	0.000	0.000	-	-
Gujarat	16.054	10.694	11.651	-8.21	-33.39
Rajasthan	693.595	656.292	692.801	-5.27	-5.38
Tamil Nadu	10.334	6.006	1.193	403.44	-41.88
<b>Offshore</b>	<b>148.465</b>	<b>141.684</b>	<b>184.342</b>	<b>-23.14</b>	<b>-4.57</b>
Eastern Offshore	65.348	70.876	81.236	-12.75	8.46
Gujarat Offshore	24.880	26.995	33.629	-19.73	8.50
Western Offshore	58.237	43.813	69.477	-36.94	-24.77
<b>GRAND TOTAL (1+2+3)</b>	<b>2999.209</b>	<b>2938.845</b>	<b>2957.258</b>	<b>-0.62</b>	<b>-2.01</b>
Onshore	1492.187	1448.486	1449.591	-0.08	-2.93
Offshore	1507.022	1490.359	1507.667	-1.15	-1.11

Note: Totals may not tally due to rounding off.

\*: Provisional. \*\*: Revised

Reasons for shortfall are indicated in the note.

## MINISTRY OF PETROLEUM &amp; NATURAL GAS

## Natural Gas Production during the month of April, 2017 vis-a-vis April, 2016

(in MMSCM)

Name of Undertaking/Unit/State	Planned production during the month*	Production during the		% variation during the month under review over last year's production in corresponding month	% variation during the month under review over planned production during the corresponding month
		Month under review *	Corresponding month of last year **		
(1)	(2)	(3)	(4)	(5)	(6)
<b>1. ONGC</b>	<b>1899.062</b>	<b>1790.069</b>	<b>1630.916</b>	<b>9.76</b>	<b>-5.74</b>
<b>Onshore</b>	<b>449.841</b>	<b>462.838</b>	<b>392.696</b>	<b>17.86</b>	<b>2.89</b>
Andhra Pradesh	78.330	72.157	55.029	31.13	-7.88
Assam	35.254	40.262	35.490	13.45	14.21
Gujarat	116.787	133.147	117.913	12.92	14.01
Rajasthan	0.411	0.293	0.262	11.83	-28.71
Tamil Nadu	96.930	95.820	84.211	13.79	-1.15
Tripura	122.129	121.159	99.791	21.41	-0.79
<b>Offshore</b>	<b>1449.221</b>	<b>1327.231</b>	<b>1238.220</b>	<b>7.19</b>	<b>-8.42</b>
Eastern Offshore	50.100	52.070	3.717	1300.86	3.93
Western Offshore	1399.121	1275.161	1234.503	3.29	-8.86
<b>2. OIL</b>	<b>243.554</b>	<b>241.278</b>	<b>250.351</b>	<b>-3.62</b>	<b>-0.93</b>
Assam	222.942	222.672	228.110	-2.38	-0.12
Arunachal Pradesh	1.050	0.971	0.964	0.73	-7.52
Rajasthan	19.562	17.635	21.277	-17.12	-9.85
<b>3. DGH (Private / JVs)</b>	<b>646.495</b>	<b>501.387</b>	<b>606.772</b>	<b>-17.37</b>	<b>-22.45</b>
<b>Onshore</b>	<b>121.072</b>	<b>108.862</b>	<b>106.353</b>	<b>2.36</b>	<b>-10.08</b>
Arunachal Pradesh	0.684	1.359	1.066	0.00	0.00
Assam	18.740	0.000	0.000	-	-
Gujarat	6.312	6.657	7.869	-15.40	5.47
Rajasthan	94.015	100.028	97.300	2.80	6.40
Tamil Nadu	1.321	0.818	0.118	593.22	-38.08
<b>CBM</b>	<b>104.337</b>	<b>46.263</b>	<b>37.239</b>	<b>24.23</b>	<b>-55.66</b>
Jharkhand (CBM)	0.295	0.334	0.195	71.28	13.22
Madhya Pradesh (CBM)	38.630	2.463	0.216	1040.28	-93.62
West Bengal (CBM)	65.412	43.466	36.828	18.02	-33.55
<b>Offshore</b>	<b>421.086</b>	<b>346.262</b>	<b>463.180</b>	<b>-25.24</b>	<b>-17.77</b>
Eastern Offshore	269.298	228.785	293.168	-21.96	-15.04
Gujarat Offshore	2.839	5.056	6.320	-20.00	78.09
Western Offshore	148.949	112.421	163.692	-31.32	-24.52
<b>TOTAL (1+2+3)</b>	<b>2789.111</b>	<b>2532.734</b>	<b>2488.039</b>	<b>1.80</b>	<b>-9.19</b>
CBM	104.337	46.263	37.239	24.23	-55.66
Onshore	814.467	812.978	749.400	8.48	-0.18
Offshore	1870.307	1673.493	1701.400	-1.64	-10.52

Note: Totals may not tally due to rounding off. \*: Provisional. \*\*: Revised

Reasons for shortfall are indicated in the note.

## MINISTRY OF PETROLEUM &amp; NATURAL GAS

(Para 3)

## Refinery Production (in terms of crude oil processed) during the month of April, 2017 vis-a-vis April, 2016

Name of Undertaking/Unit	Planned production during the month*	Production during the		% variation during the month under review over last year's production in corresponding month	% variation during the month under review over planned production during the corresponding month
		Month under review *	Corresponding month of last year**		
(1)	(2)	(3)	(4)	(5)	(6)
<b>A. Public Sector</b>	<b>11206.000</b>	<b>11153.760</b>	<b>11136.583</b>	<b>0.15</b>	<b>-0.47</b>
1. IOC, Guwahati	72.000	87.591	75.424	16.13	21.65
2. IOC, Barauni	530.000	558.278	559.264	-0.18	5.34
3. IOC, Gujarat	1110.000	1125.205	1214.962	-7.39	1.37
4. IOC, Haldia	675.000	658.631	692.329	-4.87	-2.43
5. IOC, Mathura	775.000	796.073	797.483	-0.18	2.72
6. IOC, Digboi	40.000	53.135	51.755	2.67	32.84
7. IOC, Panipat	1315.000	1326.318	1316.006	0.78	0.86
8. IOC, Bongaigaon	175.000	200.595	211.582	-5.19	14.63
9. IOC, Paradip	850.000	726.486	394.268	-	-14.53
<b>Total IOC</b>	<b>5542.000</b>	<b>5532.312</b>	<b>5313.073</b>	<b>4.13</b>	<b>-0.17</b>
10. BPCL, Mumbai	910.000	956.478	1145.523	-16.50	5.11
11. BPCL, Kochi	1040.000	1014.412	895.316	13.30	-2.46
<b>Total BPCL</b>	<b>1950.000</b>	<b>1970.890</b>	<b>2040.839</b>	<b>-3.43</b>	<b>1.07</b>
12. HPCL, Mumbai	657.000	706.834	713.907	-0.99	7.59
13. HPCL, Visakh	691.000	743.306	803.780	-7.52	7.57
<b>Total HPCL</b>	<b>1348.000</b>	<b>1450.140</b>	<b>1517.687</b>	<b>-4.45</b>	<b>7.58</b>
14. CPCL, Manali	825.000	684.768	820.049	-16.50	-17.00
15. CPCL, CBR	41.000	36.144	55.691	-35.10	-11.84
<b>Total CPCL</b>	<b>866.000</b>	<b>720.912</b>	<b>875.740</b>	<b>-17.68</b>	<b>-16.75</b>
16. NRL, Numaligarh	220.000	230.897	216.529	6.64	4.95
17. MRPL, Mangalore	1275.000	1242.745	1165.910	6.59	-2.53
18. ONGC, Tatipaka	5.000	5.864	6.805	-13.83	17.28
<b>B. Joint Venture Sector</b>	<b>1239.000</b>	<b>1372.442</b>	<b>1453.766</b>	<b>-5.59</b>	<b>10.77</b>
19. BORL, Bina	525.000	550.803	533.577	3.23	4.91
20. HMEL, Bhatinda	714.000	821.639	920.189	-10.71	15.08
<b>C. Private Sector</b>	<b>7525.000</b>	<b>7487.656</b>	<b>7565.324</b>	<b>-1.03</b>	<b>-0.50</b>
21. RIL, Jamnagar	2732.000	2665.306	2731.950	-2.44	-2.44
22. RIL, SEZ	3115.000	3134.839	3114.526	0.65	0.64
<b>Total RIL</b>	<b>5847.000</b>	<b>5800.145</b>	<b>5846.476</b>	<b>-0.79</b>	<b>-0.80</b>
23. EOL, Vadinar	1678.000	1687.511	1718.848	-1.82	0.57
<b>TOTAL(A+B+C)</b>	<b>19970.000</b>	<b>20013.858</b>	<b>20155.673</b>	<b>-0.70</b>	<b>0.22</b>

Note: Totals may not tally due to rounding off. \*: Provisional.

Reasons for shortfall are indicated in the note.



## MINISTRY OF PETROLEUM &amp; NATURAL GAS

(Para 3.4)

## Refinery-wise Capacity Utilisation during the month of April, 2017 vis-a-vis April, 2016

Name of Undertaking/Unit	April, 2017			April, 2016		
	Prorated Installed Capacity	Actual Crude T'put *	% Utilisation of Installed Capacity	Prorated Installed Capacity	Actual Crude T'put	% Utilisation of Installed Capacity
(1)	(2)	(3)	(4)	(5)	(6)	(7)
<b>A. Public Sector</b>	<b>11465.00</b>	<b>11153.76</b>	<b>97.29</b>	<b>11071.00</b>	<b>11136.58</b>	<b>100.59</b>
1. IOC, Guwahati	82.00	87.59	106.82	82.00	75.42	91.98
2. IOC, Barauni	493.00	558.28	113.24	492.00	559.26	113.67
3. IOC, Gujarat	1126.00	1125.21	99.93	1123.00	1214.96	108.19
4. IOC, Haldia	616.00	658.63	106.92	615.00	692.33	112.57
5. IOC, Mathura	658.00	796.07	120.98	656.00	797.48	121.57
6. IOC, Digboi	53.00	53.14	100.25	53.00	51.76	97.65
7. IOC, Panipat	1233.00	1326.32	107.57	1230.00	1316.01	106.99
8. IOC, Bongaigaon	193.00	200.60	103.94	193.00	211.58	109.63
9. IOC, Paradip	1233.00	726.49	58.92	1230.00	394.27	0.00
<b>Total IOC</b>	<b>5688.00</b>	<b>5532.31</b>	<b>97.26</b>	<b>5672.00</b>	<b>5313.07</b>	<b>93.67</b>
10. BPCL, Mumbai	986.00	956.48	97.01	984.00	1145.52	116.41
11. BPCL, Kochi	1019.00	1014.41	99.55	779.00	895.32	114.93
<b>Total BPCL</b>	<b>2005.00</b>	<b>1970.89</b>	<b>98.30</b>	<b>1762.00</b>	<b>2040.84</b>	<b>115.83</b>
12. HPCL, Mumbai	616.00	706.83	114.75	533.00	713.91	133.94
13. HPCL, Visakh	685.00	743.31	108.51	680.00	803.78	118.20
<b>Total HPCL</b>	<b>1301.00</b>	<b>1450.14</b>	<b>111.46</b>	<b>1213.00</b>	<b>1517.69</b>	<b>125.12</b>
14. CPCL, Manali	863.00	684.77	79.35	861.00	820.05	95.24
15. CPCL, CBR	123.00	36.14	29.39	82.00	55.69	67.92
<b>Total CPCL</b>	<b>986.00</b>	<b>720.91</b>	<b>73.11</b>	<b>943.00</b>	<b>875.74</b>	<b>92.87</b>
16. NRL, Numaligarh	247.00	230.90	93.48	246.00	216.53	88.02
17. MRPL, Mangalore	1233.00	1242.75	100.79	1230.00	1165.91	94.79
18. ONGC, Tatipaka	5.00	5.86	117.28	5.00	6.81	136.11
<b>B. Joint Venture Sector</b>	<b>1233.00</b>	<b>1372.44</b>	<b>111.31</b>	<b>1230.00</b>	<b>1453.77</b>	<b>118.19</b>
19. BORL, Bina	493.00	550.80	111.72	492.00	533.58	108.45
20. HMEL, Bhatinda	740.00	821.64	111.03	738.00	920.19	124.69
<b>C. Private Sector</b>	<b>6575.00</b>	<b>7487.66</b>	<b>113.88</b>	<b>6557.00</b>	<b>7565.32</b>	<b>115.38</b>
21. RIL, Jamnagar	2712.00	2665.31	98.28	2705.00	2731.95	101.00
22. RIL, SEZ	2219.00	3134.84	141.27	2213.00	3114.53	140.74
<b>Total RIL</b>	<b>4932.00</b>	<b>5800.15</b>	<b>117.60</b>	<b>4918.00</b>	<b>5846.48</b>	<b>118.88</b>
23. EOL, Vadinar	1644.00	1687.51	102.65	1639.00	1718.85	104.87
<b>TOTAL(A+B+C)</b>	<b>19274.00</b>	<b>20013.86</b>	<b>103.84</b>	<b>18858.00</b>	<b>20155.67</b>	<b>106.88</b>

\*: Provisional.

## MINISTRY OF PETROLEUM &amp; NATURAL GAS

(Para 3.4)

## Production of Petroleum Products during the month of April, 2017 vis-a-vis April, 2016

Name of Undertaking/Unit	Planned production during the month	Production during the		% variation during the month under review over last year's production in corresponding month	% variation during the month under review over planned production during the corresponding month
		Month under review *	Corresponding month of last year**		
(1)	(2)	(3)	(4)	(5)	(6)
<b>I. Refinery</b>					
<b>A. Public Sector</b>	<b>10473.000</b>	<b>10385.748</b>	<b>10339.946</b>	<b>0.44</b>	<b>-0.83</b>
1. IOC, Guwahati	77.000	100.149	101.629	-1.46	30.06
2. IOC, Barauni	488.000	522.151	516.748	1.05	7.00
3. IOC, Gujarat	1056.000	1127.783	1116.933	0.97	6.80
4. IOC, Haldia	626.000	605.481	597.955	1.26	-3.28
5. IOC, Mathura	751.000	763.282	752.708	1.40	1.64
6. IOC, Digboi	40.000	54.683	51.966	5.23	36.71
7. IOC, Panipat	1319.000	1281.112	1347.532	-4.93	-2.87
8. IOC, Bongaigaon	161.000	153.761	192.510	-20.13	-4.50
9. IOC, Paradip	715.000	688.827	345.059	-	-3.66
<b>Total IOC</b>	<b>5233.000</b>	<b>5297.229</b>	<b>5023.040</b>	<b>5.46</b>	<b>1.23</b>
10. BPCL, Mumbai	861.000	853.058	1079.717	-20.99	-0.92
11. BPCL, Kochi	986.000	972.096	807.842	20.33	-1.41
<b>Total BPCL</b>	<b>1847.000</b>	<b>1825.154</b>	<b>1887.559</b>	<b>-3.31</b>	<b>-1.18</b>
12. HPCL, Mumbai	609.000	645.591	637.751	1.23	6.01
13. HPCL, Visakh	637.000	670.667	741.318	-9.53	5.29
<b>Total HPCL</b>	<b>1246.000</b>	<b>1316.258</b>	<b>1379.069</b>	<b>-4.55</b>	<b>5.64</b>
14. CPCL, Manali	746.000	562.589	724.066	-22.30	-24.59
15. CPCL, CBR	41.000	36.518	55.818	-34.58	-10.93
<b>Total CPCL</b>	<b>787.000</b>	<b>599.107</b>	<b>779.884</b>	<b>-23.18</b>	<b>-23.87</b>
16. NRL, Numaligarh	217.000	228.027	209.872	8.65	5.08
17. MRPL, Mangalore	1138.000	1114.300	1053.841	5.74	-2.08
18. ONGC, Tatipaka	5.000	5.673	6.682	-15.09	13.47
<b>B. Joint Venture Sector</b>	<b>1149.000</b>	<b>1258.222</b>	<b>1326.323</b>	<b>-5.13</b>	<b>9.51</b>
19. BORL, Bina	474.000	500.533	451.960	10.75	5.60
20. HMEL, Bhatinda	675.000	757.689	874.363	-13.34	12.25
<b>C. Private Sector</b>	<b>7631.000</b>	<b>7655.128</b>	<b>7628.857</b>	<b>0.34</b>	<b>0.32</b>
21. RIL, Jamnagar	2586.000	2529.537	2586.062	-2.19	-2.18
22. RIL, SEZ	3432.000	3481.285	3431.558	1.45	1.44
<b>Total RIL</b>	<b>6018.000</b>	<b>6010.822</b>	<b>6017.620</b>	<b>-0.11</b>	<b>-0.12</b>
23. EOL, Vadinar	1613.000	1644.306	1611.237	2.05	1.94
<b>TOTAL(A+B+C)</b>	<b>19254.000</b>	<b>19299.098</b>	<b>19295.127</b>	<b>0.02</b>	<b>0.23</b>
<b>II. Fractionators</b>					
ONGC	272.000	252.904	220.828	14.53	-7.02
OIL	3.000	2.790	3.349	-16.69	-7.00
GAIL	80.000	84.088	84.856	-0.91	5.11
<b>D. Total Fractionators</b>	<b>355.000</b>	<b>339.782</b>	<b>309.033</b>	<b>9.95</b>	<b>-4.29</b>
<b>Grand Total (A+B+C+D)</b>	<b>19609.000</b>	<b>19638.880</b>	<b>19604.160</b>	<b>0.18</b>	<b>0.15</b>

Note: Totals may not tally due to rounding off.

\*: Provisional.

\*\*: Revised