

Government of India
Ministry of Petroleum and Natural Gas
Economics & Statistics Division

New Delhi
Dated the 24th October, 2016

Monthly Production Report
September 2016

Crude Oil

- Crude oil production¹ during September 2016 was 2917.43 TMT which is 2.82% and 4.09% lower than target and production achieved in September 2015 respectively. Cumulative crude oil production during April-September, 2016 was 18063.64 TMT which is 1.09% and 3.30% lower than target and production during corresponding period of last year respectively. Unit-wise and state-wise crude oil production is given at Annexure-I. Unit-wise crude oil production for the month of September, 2016 and cumulatively for the period April-September, 2016 vis-à-vis same period of last year has been shown in Table-1 and month-wise in Figure-1.

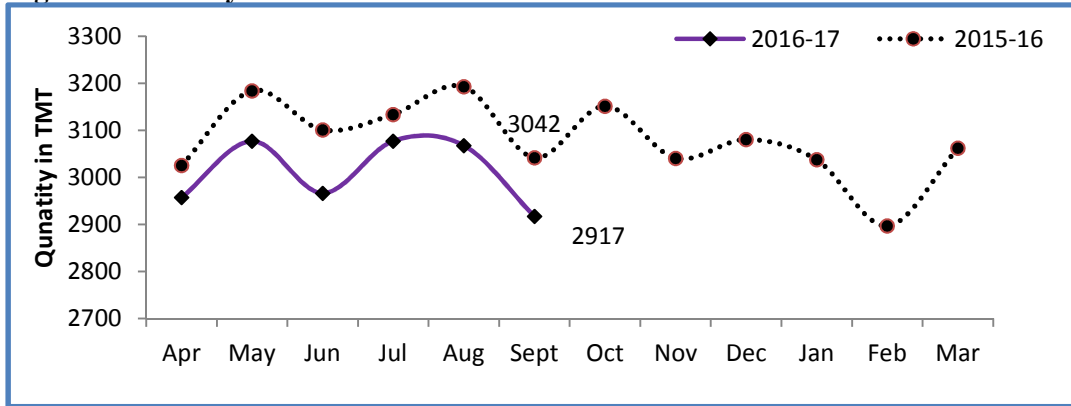
Table-1: Crude Oil Production (in TMT)

Oil Company	Target	September (Month)				April-September (Cumulative)			
	2016-17 (Apr-Mar)	2016-17		2015-16	% over last year	2016-17		2015-16	% over last year
		Target	Prod.*	Prod.		Target	Prod.*	Prod.	
ONGC	22766.00	1836.15	1803.68	1856.26	97.17	11176.08	11028.90	11240.83	98.11
OIL	3480.00	273.66	261.84	261.51	100.13	1618.92	1604.78	1649.66	97.28
PSC Fields	10839.32	892.16	851.90	924.06	92.19	5468.17	5429.96	5789.67	93.79
Total	37085.32	3001.98	2917.43	3041.83	95.91	18263.17	18063.64	18680.16	96.70

*: Provisional

¹ Including condensate

Figure-1: Monthly Crude Oil Production



Unit-wise production details with reasons for shortfall have been given in following sub-sections:

1.1 Crude oil production by ONGC during September, 2016 was 1803.68 TMT which is 1.77% lower than the monthly target and 2.83% less when compared with September 2015. Cumulative crude oil production during April-September, 2016 was 11028.90 TMT which is 1.32% lower than target for the period and 1.89% lower than the production during corresponding period of last year. Reasons for shortfall in production in some fields are as under:

- ❖ Less than planned production from matured and marginal fields & increase in water cut in few wells of Heera field.

1.2 Crude oil production by OIL during September, 2016 was 261.84 TMT which is 4.32% lower than monthly target but 0.13% higher than production in September 2015. Cumulative crude oil production during April-September, 2016 was 1604.78 TMT which is 0.87% lower than target for the period and 2.72% lower than the production during corresponding period of last year. Reasons for shortfall in production are as under:

- ❖ Less than planned contribution from high producing areas like Greater Hapjan, Greater Chandmari fields & Naharkatiya fields on account of rise in water cut.
- ❖ Loss in production of 1236 MT on account of bandhs and miscreant activities/local problems at various locations during the month

1.3 Crude oil production by Pvt. /JVs during September 2016 was 851.90 TMT which is 4.51% lower than the monthly target and 7.81% lower than September, 2015. Cumulative crude oil production during April-September, 2016 was 5429.96 TMT which is 0.70 % lower than target for the period and 6.21% lower than the production during corresponding period of last year. Reasons for shortfall in production are as under:

- ❖ Panna-Mukta: Lower production due to closure of wells in PC, PG (till 23rd Sept' 16) & PF (till 16th Sept' 16) due to riser integrity issue.
- ❖ Less production from RJ-ON-90/1 due to downtime related to wells intervention in Mangala, Bhagyam & Aishwarya; higher than expected water cut from Bhagyam wells & EPS/Packer failure in 2 wells in Aishwarya.
- ❖ Natural Decline in Ravva & CB-OS/2

Natural Gas

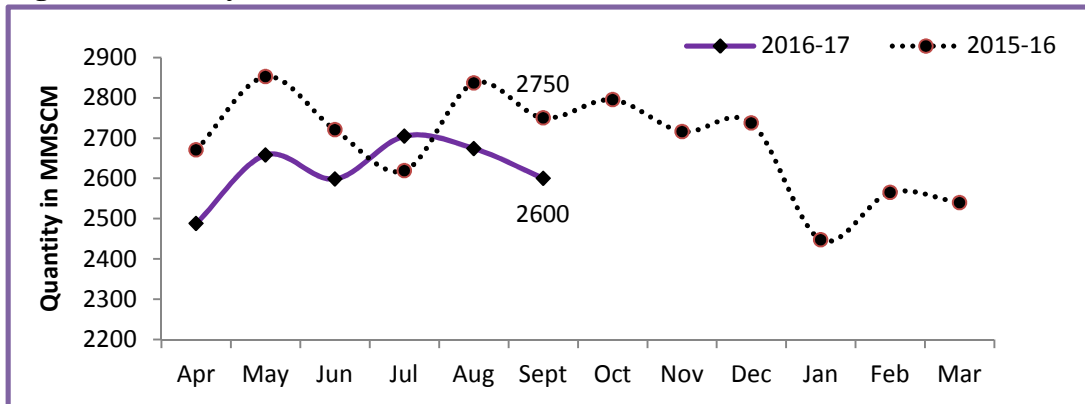
2. Natural gas production during September 2016 was 2600.10 MMSCM which is 5.75% lower than the target for the month and 5.45% lower than the production in September 2015. Cumulative natural gas production during April-September, 2016 was 15723.54 MMSCM which is 3.69% lower than target for the period and 4.41% lower than the production during corresponding period of last year. Unit-wise and state-wise natural gas production is given at Annexure-II. Unit-wise natural gas production for the month of September, 2016 and cumulatively for the period April-September, 2016 vis-à-vis same period of last year has been shown in Table-2 and month-wise in Figure-2.

Table-2: Natural Gas Production (MMSCM)

Oil Company	Target	September (Month)				April-September (Cumulative)			
	2016-17 (Apr-Mar)	2016-17		2015-16	% over last year	2016-17		2015-16	% over last year
		Target	Prod.*	Prod.		Target	Prod.*	Prod.	
ONGC	22743.43	1828.70	1841.92	1815.39	101.46	10793.00	10683.56	10837.89	98.58
OIL	2950.03	248.74	243.49	227.08	107.23	1514.53	1474.37	1343.97	109.70
PSC Fields	8425.44	681.34	514.69	707.58	72.74	4018.81	3565.61	4266.98	83.56
Total	34118.90	2758.77	2600.10	2750.05	94.55	16326.34	15723.54	16448.83	95.59

*: Provisional

Figure-2: Monthly Natural Gas Production



- 2.1 Natural gas production by ONGC during September, 2016 was 1841.92 MMSCM which is 0.72% higher than the monthly target and 1.46% higher when compared with September 2015. Cumulative natural gas production during April-September, 2016 was 10683.56 MMSCM which is 1.01% lower than the cumulative target and 1.42% lower than the production during the corresponding period of last year.
- 2.2 Natural gas production by OIL during September, 2016 was 243.49 MMSCM which is 2.11% lower than the monthly target but 7.23% higher than September 2015. Cumulative natural gas production during April-September, 2016 was 1474.37 MMSCM which is 2.65% lower than the cumulative target but 9.70% higher than the production during the corresponding period of last year. Reasons for shortfall in production are as under:
- ❖ Low production due to decline in production potential in a few high producing gas wells on account of unexpected subsurface problems like water and sand ingress.
 - ❖ NRL under annual maintenance from 10.09.2016 to 25.09.2016.
- 2.3 Natural gas production by Pvt. /JVs during September 2016 was 514.69 MMSCM which is 24.46% lower than the monthly target and 27.26% less when compared with September, 2015. Cumulative natural gas production during April-September, 2016 was 3565.61 MMSCM which is 11.28% lower than the cumulative target and 16.44% lower than the production during the corresponding period of last year. Reasons for shortfall in production are as under:
- ❖ Closure of 1 well in MA and 1 well in D1D3 field in KG-DWN-98/3.
 - ❖ PC, PG & PF Platforms shutdown for different durations at Panna-Mukta, in response to leak in riser.
 - ❖ Underperformance of KG-OSN-2001/3
 - ❖ Increase in water cut in few wells in RJ-ON/6.
 - ❖ Underperformance of Sohagpur West CBM blocks.

Refinery Production (in terms of Crude oil processed)

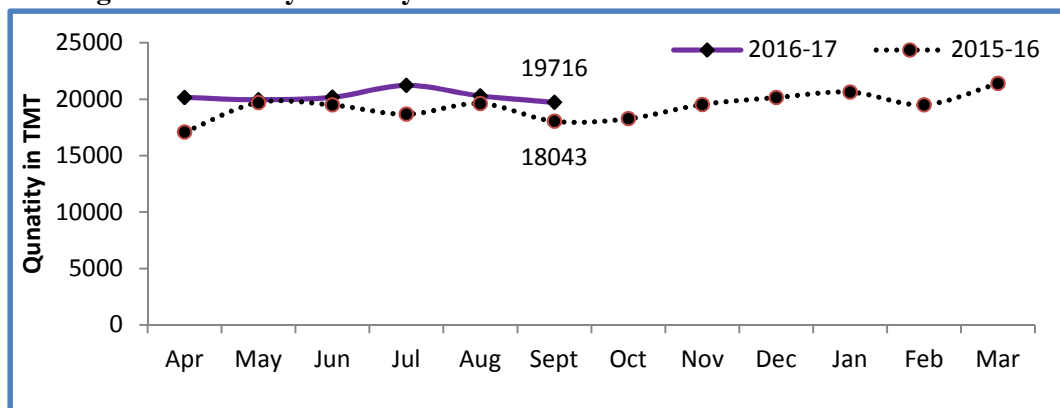
- 3 Refinery production during September, 2016 was 19715.91 TMT which is 1.29% higher than the target for the month and 9.27% higher than the production during corresponding period of last year. Cumulative production during April-September, 2016 was 121500.29 TMT which is 3.01% higher than the target for the period and 7.90% higher than the production during corresponding period of last year. Unit-wise production is given at Annexure-III. Unit-wise production for the month of September, 2016 and cumulatively for the period April-September, 2016 vis-à-vis same period of last year has been shown in Table-3 and month-wise in Figure-3.

Table 3: Refinery Production (TMT)

Oil Company	Target	September (Month)				April-September (Cumulative)			
	2016-17 (Apr-Mar)	2016-17		2015-16	% over last year	2016-17		2015-16	% over last year
		Target	Prod.*	Prod.		Target	Prod.*	Prod.	
PSUS	135565.03	10873.59	10767.22	9733.13	110.62	66499.37	67366.62	60671.85	111.03
IOCL	65100.00	5299.57	4996.21	4375.00	114.20	31934.25	31733.17	27250.57	116.45
BPCL	25250.15	2056.50	2091.64	1898.71	110.16	12267.99	12577.58	12040.82	104.46
HPCL	16800.29	1378.63	1364.26	1499.07	91.01	8304.52	8517.21	7964.43	106.94
CPCL	10250.00	919.47	925.39	731.22	126.55	5518.82	5570.91	4880.19	114.15
NRL	2670.00	90.57	79.93	247.77	32.26	1233.00	1243.55	1166.33	106.62
MRPL	15450.00	1125.00	1302.31	976.10	133.42	7220.00	7682.44	7342.72	104.63
ONGC	44.59	3.85	7.48	5.26	142.31	20.79	41.77	26.80	155.85
JVs	15000.00	1070.34	1416.46	1526.64	92.78	7549.07	8774.56	8529.16	102.88
BORL	6000.00	300.00	501.46	619.69	80.92	2850.00	3273.29	3044.69	107.51
HMEL	9000.00	770.34	915.00	906.95	100.89	4699.07	5501.28	5484.47	100.31
Private	89852.65	7520.32	7532.23	6783.20	111.04	43905.64	45359.10	43399.60	104.52
RIL	69561.01	5829.32	5781.35	5829.32	99.18	33759.66	34849.51	33759.66	103.23
EOL	20291.64	1691.00	1750.87	953.88	183.55	10145.97	10509.59	9639.94	109.02
TOTAL	240417.68	19464.24	19715.91	18042.96	109.27	117954.07	121500.29	112600.61	107.90

*: Provisional

Figure 3: Monthly Refinery Production



3.1 PSU Refineries' production during September, 2016 was 10767.22 TMT which is 0.98% lower than the target for the month but 10.62% higher than the production achieved in the corresponding month of last year. Cumulative production during April-September, 2016 was 67366.62 TMT which is 1.30% higher than the target for the period and 11.03% higher than the production during corresponding period of last year. Reasons for shortfall of refinery production in some PSU refineries are as under:

- ❖ IOCL, Paradip: Throughput lower due to Naphtha containment.
- ❖ IOCL, Digboi/ Guwahati: Lower availability of Assam crude.

- ❖ HPCL, Mumbai: Lower capacity utilization due to hydrogen unavailability in view of unplanned shutdown of CCR/HGU units.
- ❖ Delay in startup on account of reactor maintenance pursuant to planned shutdown from 10.09.2016 to 25.09.2016.

- 3.2 Production in JV refineries during September, 2016 was 1416.46 TMT which is 32.34% higher than the target for the month but 7.22% lower than the production achieved in the corresponding month of last year. Cumulative production during April-September, 2016 was 8774.56 TMT which is 16.23% higher than the target for the period and 2.88% higher than the production during corresponding period of last year.
- 3.3 Production in private refineries during September, 2016 was 7532.23 TMT which is 0.16% higher than the target for the month and 11.04% higher than the production achieved in the corresponding month of last year. Cumulative production during April-September, 2016 was 45359.10 TMT which is 3.31% higher than the target for the period and 4.52% higher than the production during corresponding period of last year.
- 3.4 Refinery-wise details of the capacity utilization and production of petroleum products during the month of September, 2016 and cumulatively for the period April-September, 2016 vis-à-vis April-September, 2015 are given at Annexures-IV and V respectively.

Annexure-I

(Para 1)

MINISTRY OF PETROLEUM & NATURAL GAS

Crude Oil Production during the month of September, 2016 and cumulatively for the period April-September, 2016 vis-à-vis April-September, 2015

(Qty: '000' Tonnes)

Name of Undertaking/Unit/State	Planned production during the month	Production during the			Cumulative Production			% variation over last year		% variation during the month under review over planned production
		Month under review *	Corresponding month of last year **	Preceding month of current year **	(April-September)			During the month under review	Upto the end of the period	
					Planned production during current year	Actual production during current year *	Actual production during corresponding period of last year **			
(1)	(2)	(3)	(4)	(5)	(5)	(6)	(7)	(8)	(9)	(10)
1. ONGC	1836.153	1803.681	1856.259	1865.309	11176.077	11028.901	11240.832	-2.83	-1.89	-1.77
Onshore	487.892	490.106	477.948	504.911	2942.919	2942.186	2890.682	2.54	1.78	0.45
Andhra Pradesh	22.741	24.232	24.139	22.023	135.765	130.744	151.085	0.38	-13.46	6.56
Assam ^	81.566	77.955	78.041	80.603	486.107	469.223	484.258	-0.11	-3.10	-4.43
Gujarat	365.275	369.329	355.529	382.955	2208.190	2227.065	2125.097	3.88	4.80	1.11
Tamil Nadu	18.310	18.590	20.239	19.330	112.857	115.154	130.242	-8.15	-11.58	1.53
Offshore	1348.261	1313.575	1378.311	1360.398	8233.158	8086.715	8350.150	-4.70	-3.15	-2.57
Eastern Offshore	0.600	1.365	1.762	1.314	7.182	7.675	10.958	-22.53	-29.96	127.50
Western Offshore	1232.522	1206.297	1266.313	1245.421	7536.983	7408.794	7686.748	-4.74	-3.62	-2.13
Condensates	115.139	105.913	110.236	113.663	688.993	670.246	652.444	-3.92	2.73	-8.01
2. OIL (Onshore)	273.660	261.841	261.514	272.075	1618.922	1604.784	1649.661	0.13	-2.72	-4.32
Assam	273.129	261.218	261.048	271.385	1615.304	1600.881	1647.329	0.07	-2.82	-4.36
Arunachal Pradesh	0.531	0.623	0.466	0.690	3.618	3.903	2.332	33.69	67.37	17.33
3. DGH (Private / JVC)	892.163	851.904	924.060	930.419	5468.173	5429.956	5789.665	-7.81	-6.21	-4.51
Onshore	718.035	688.611	708.541	747.575	4362.489	4324.635	4432.820	-2.81	-2.44	-4.10
Arunachal Pradesh	4.467	3.884	4.037	4.041	25.389	23.685	25.151	-3.79	-5.83	-13.05
Gujarat	15.082	11.328	12.625	11.723	84.152	69.410	74.030	-10.27	-6.24	-24.89
Rajasthan	693.595	669.505	691.879	728.597	4230.903	4217.549	4333.639	-3.23	-2.68	-3.47
Tamil Nadu	4.891	3.894	0.000	3.214	22.045	13.991	0.000	-	-	-
Offshore	174.128	163.293	215.519	182.844	1105.685	1105.321	1356.845	-24.23	-18.54	-6.22
Eastern Offshore	77.086	77.825	99.635	82.820	493.985	489.046	701.938	-21.89	-30.33	0.96
Gujarat Offshore	27.992	31.138	36.406	33.048	190.530	198.202	202.334	-14.47	-2.04	11.24
Western Offshore	69.050	54.330	79.478	66.976	421.170	418.073	452.573	-31.64	-7.62	-21.32
GRAND TOTAL (1+2+3)	3001.976	2917.426	3041.833	3067.803	18263.172	18063.641	18680.158	-4.09	-3.30	-2.82
Onshore	1479.587	1440.558	1448.003	1524.561	8924.330	8871.605	8973.163	-0.51	-1.13	-2.64
Offshore	1522.389	1476.868	1593.830	1543.242	9338.843	9192.036	9706.995	-7.34	-5.31	-2.99

Note: Totals may not tally due to rounding off.

^: Includes crude oil production of Tripura

*: Provisional. **: Revised

Reasons for shortfall are indicated in the note.

MINISTRY OF PETROLEUM & NATURAL GAS

Natural Gas Production during the month of September, 2016 and cumulatively for the period April-September, 2016 vis-à-vis April-September, 2015

(Qty: Million Cubic Meters)

Name of Undertaking/Unit/State	Planned production during the month	Production during the			Cumulative Production (April-September)			% variation over last year		% variation during the month under review over planned production
		Month under review *	Corresponding month of last year **	Preceding month of current year **	Planned production during current year	Actual production during current year *	Actual production during corresponding period of last year **	During the month under review	Upto the end of the period	
(1)	(2)	(3)	(4)	(5)	(5)	(6)	(7)	(8)	(9)	(10)
1. ONGC	1828.695	1841.924	1815.394	1845.509	10792.997	10683.558	10837.886	1.46	-1.42	0.72
Onshore	423.887	428.359	390.924	432.619	2561.914	2470.843	2378.403	9.58	3.89	1.05
Andhra Pradesh	52.137	77.280	41.390	75.657	326.814	406.958	291.518	86.71	39.60	48.23
Assam	34.983	35.734	33.326	36.880	210.158	218.101	201.065	7.23	8.47	2.15
Gujarat	118.903	125.711	119.768	122.125	735.615	689.254	694.424	4.96	-0.74	5.73
Rajasthan	0.411	0.207	0.392	0.276	2.507	1.620	2.587	-47.19	-37.37	-49.63
Tamil Nadu	93.054	74.743	85.877	77.640	561.896	463.134	548.742	-12.97	-15.60	-19.68
Tripura	124.400	114.684	110.171	120.041	724.924	691.776	640.067	4.10	8.08	-7.81
Offshore	1404.808	1413.565	1424.470	1412.890	8231.083	8212.715	8459.484	-0.77	-2.92	0.62
Eastern Offshore	54.709	41.899	20.258	28.056	239.712	141.143	127.494	106.83	10.71	-23.41
Western Offshore	1350.099	1371.666	1404.212	1384.834	7991.370	8071.572	8331.990	-2.32	-3.13	1.60
2. OIL	248.737	243.489	227.080	244.052	1514.530	1474.369	1343.965	7.23	9.70	-2.11
Assam	233.127	224.603	210.442	225.083	1394.334	1348.999	1246.358	6.73	8.24	-3.66
Arunachal Pradesh	1.210	0.981	0.866	1.010	7.356	5.946	5.479	13.28	8.52	-18.93
Rajasthan	14.400	17.905	15.772	17.959	112.840	119.424	92.128	13.52	29.63	24.34
3. DGH (Private / JVC)	681.339	514.686	707.580	584.591	4018.815	3565.611	4266.982	-27.26	-16.44	-24.46
Onshore	103.544	93.365	106.552	102.997	596.288	616.598	600.843	-12.38	2.62	-9.83
Assam	0.000	0.000	0.000	0.000	0.000	0.000	0.000	0.00	0.00	0.00
Arunachal Pradesh	0.755	0.972	1.320	1.232	4.292	7.061	9.668	-26.36	-26.97	28.74
Gujarat	7.356	6.984	7.331	7.701	43.730	46.474	46.642	-4.73	-0.36	-5.05
Rajasthan	94.872	84.992	97.901	93.752	545.770	561.656	544.533	-13.19	3.14	-10.41
Tamil Nadu	0.561	0.417	0.000	0.312	2.496	1.407	0.000	-	-	-
CBM	95.901	47.816	33.417	48.235	423.623	266.463	195.893	43.09	36.02	-50.14
Jharkhand (CBM)	0.266	0.250	0.146	0.259	1.625	1.407	0.901	71.23	56.16	-6.10
Madhya Pradesh (CBM)	33.350	0.525	0.088	0.317	90.210	2.335	0.636	496.59	267.14	-98.43
West Bengal (CBM)	62.285	47.041	33.183	47.659	331.788	262.721	194.356	41.76	35.18	-24.47
Offshore	481.895	373.505	567.611	433.359	2998.904	2682.550	3470.246	-34.20	-22.70	-22.49
Eastern Offshore	327.927	248.740	372.698	272.955	2111.406	1680.951	2331.641	-33.26	-27.91	-24.15
Gujarat Offshore	3.218	6.868	6.294	7.039	19.629	40.975	33.153	9.12	23.59	113.44
Western Offshore	150.750	117.897	188.619	153.365	867.870	960.624	1105.452	-37.49	-13.10	-21.79
TOTAL (1+2+3)	2758.771	2600.099	2750.054	2674.152	16326.341	15723.538	16448.834	-5.45	-4.41	-5.75
CBM	95.901	47.816	33.417	48.235	423.623	266.463	195.893	43.09	36.02	-50.14
Onshore	776.168	765.213	724.556	779.668	4672.731	4561.810	4323.211	5.61	5.52	-1.41
Offshore	1886.702	1787.070	1992.081	1846.249	11229.987	10895.265	11929.730	-10.29	-8.67	-5.28

Note: Totals may not tally due to rounding off.

*: Provisional. **: Revised

CBM: Coal Bed Methane

Reasons for shortfall are indicated in the note.

MINISTRY OF PETROLEUM & NATURAL GAS

Refinery Production (in terms of crude oil processed) during the month of September, 2016 and cumulatively for the period April-September, 2016 vis-à-vis April-September, 2015

(Qty: '000' Tonnes)

Name of Undertaking/Unit	Planned production during the month	Production during the			Cumulative Production			% variation over last year		% variation during the month under review over planned production
		Month under review *	Corresponding month of last year	Preceding month of current year **	(April-September)			During the month under review	Upto the end of the period	
					Planned production during current year	Actual production during current year *	Actual production during corresponding period of last year **			
(1)	(2)	(3)	(4)	(5)	(5)	(6)	(7)	(8)	(9)	(10)
A. Public Sector	10873.589	10767.221	9733.127	10985.150	66499.370	67366.623	60671.854	10.62	11.03	-0.98
1. IOC, Guwahati	81.000	68.189	71.930	66.320	497.400	436.167	517.098	-5.20	-15.65	-15.82
2. IOC, Barauni	486.887	512.540	526.941	570.971	3118.492	3342.995	3169.659	-2.73	5.47	5.27
3. IOC, Gujarat	1044.698	1084.316	1065.664	1228.656	7184.562	7275.161	6497.093	1.75	11.98	3.79
4. IOC, Haldia	620.073	665.081	491.446	630.331	3994.462	4041.960	3798.832	35.33	6.40	7.26
5. IOC, Mathura	644.999	748.541	695.800	701.061	4423.501	4612.562	4263.845	7.58	8.18	16.05
6. IOC, Digboi	58.000	46.023	44.598	40.318	301.000	250.818	282.780	3.20	-11.30	-20.65
7. IOC, Panipat	1099.154	1233.884	1268.988	1048.493	7612.863	7741.038	7418.949	-2.77	4.34	12.26
8. IOC, Bongaigaon	209.760	192.799	209.637	202.454	1207.567	1235.902	1302.313	-8.03	-5.10	-8.09
9. IOC, Paradip	1055.000	444.836	0.000	464.844	3594.400	2796.563	0.000	-	-	-57.84
Total IOC	5299.572	4996.209	4375.004	4953.448	31934.248	31733.166	27250.569	14.20	16.45	-5.72
10. BPCL, Mumbai	1158.170	1167.175	997.239	1212.476	6998.954	7068.081	6548.025	17.04	7.94	0.78
11. BPCL, Kochi	898.333	924.469	901.466	937.883	5269.032	5509.495	5492.799	2.55	0.30	2.91
Total BPCL	2056.503	2091.644	1898.705	2150.359	12267.987	12577.576	12040.825	10.16	4.46	1.71
12. HPCL, Mumbai	663.300	630.680	696.583	736.633	4046.130	4119.070	3702.946	-9.46	11.24	-4.92
13. HPCL, Visakh	715.331	733.582	802.485	516.592	4258.390	4398.142	4261.482	-8.59	3.21	2.55
Total HPCL	1378.631	1364.262	1499.068	1253.225	8304.520	8517.212	7964.428	-8.99	6.94	-1.04
14. CPCL, Manali	870.000	883.025	685.018	960.684	5218.000	5295.420	4606.101	28.91	14.97	1.50
15. CPCL, CBR	49.467	42.366	46.205	45.986	300.819	275.489	274.084	-8.31	0.51	-14.36
Total CPCL	919.467	925.391	731.223	1006.670	5518.819	5570.909	4880.185	26.55	14.15	0.64
16. NRL, Numaligarh	90.566	79.931	247.768	239.041	1233.004	1243.555	1166.331	-67.74	6.62	-11.74
17. MRPL, Mangalore	1125.000	1302.305	976.104	1376.007	7220.000	7682.437	7342.717	33.42	4.63	15.76
18. ONGC, Tatipaka	3.851	7.479	5.256	6.400	20.793	41.769	26.800	42.31	55.85	94.24
B. Joint Venture Sector	1070.339	1416.463	1526.636	1521.600	7549.068	8774.562	8529.158	-7.22	2.88	32.34
19. BORL, Bina	300.000	501.463	619.686	587.600	2850.000	3273.287	3044.687	-19.08	7.51	67.15
20. HMEL, GGSR, Bhatinda	770.339	915.000	906.950	934.000	4699.068	5501.275	5484.471	0.89	0.31	18.78
C. Private Sector	7520.316	7532.226	6783.198	7783.506	43905.636	45359.101	43399.601	11.04	4.52	0.16
21. RIL, Jamnagar	2731.057	2657.713	2731.057	2778.744	15812.695	16565.262	15812.695	-2.69	4.76	-2.69
22. RIL, SEZ	3098.259	3123.639	3098.259	3223.823	17946.970	18284.251	17946.970	0.82	1.88	0.82
Total RIL	5829.316	5781.352	5829.316	6002.567	33759.665	34849.513	33759.665	-0.82	3.23	-0.82
23. EOL, Vadinar	1691.000	1750.874	953.882	1780.939	10145.971	10509.588	9639.936	83.55	9.02	3.54
TOTAL(A+B+C)	19464.244	19715.910	18042.961	20290.256	117954.074	121500.286	112600.613	9.27	7.90	1.29

Note: Totals may not tally due to rounding off. *: Provisional. **: Revised

Reasons for shortfall are indicated in the note.

MINISTRY OF PETROLEUM & NATURAL GAS

(Para 3.4)

Refinery-wise Capacity Utilisation during the month of September, 2016 and cumulatively for the period April-September 2016 vis-à-vis April-September 2015

(Qty: '000' Tonnes)

Name of Undertaking/Unit	September,2016			September,2015			Cumulative (April - September)					
	Prorated Installed Capacity	Actual Crude T'put *	% Utilisation of Installed Capacity	Prorated Installed Capacity	Actual Crude T'put	% Utilisation of Installed Capacity	2016-17			2015-16		
							Prorated Installed Capacity	Actual Crude T'put *	% Utilisation of Installed Capacity	Prorated Installed Capacity	Actual Crude T'put **	% Utilisation of Installed Capacity
(1)	(2)	(3)	(4)	(5)	(6)	(7)	(8)	(9)	(10)	(11)	(12)	(13)
A. Public Sector	11101.00	10767.22	96.99	9841.00	9733.13	98.90	67718.00	67366.62	99.48	60033.00	60671.85	101.06
1. IOC, Guwahati	82.00	68.19	83.16	82.00	71.93	87.72	501.00	436.17	87.06	500.00	517.10	103.42
2. IOC, Barauni	493.00	512.54	103.96	492.00	526.94	107.10	3008.00	3343.00	111.14	3000.00	3169.66	105.66
3. IOC, Gujarat	1126.00	1084.32	96.30	1123.00	1065.66	94.89	6869.00	7275.16	105.91	6850.00	6497.09	94.85
4. IOC, Haldia	616.00	665.08	107.97	615.00	491.45	79.91	3760.00	4041.96	107.50	3750.00	3798.83	101.30
5. IOC, Mathura	658.00	748.54	113.76	656.00	695.80	106.07	4011.00	4612.56	115.00	4000.00	4263.85	106.60
6. IOC, Digboi	53.00	46.02	86.84	53.00	44.60	84.15	326.00	250.82	76.94	325.00	282.78	87.01
7. IOC, Panipat	1233.00	1233.88	100.07	1230.00	1268.99	103.17	7521.00	7741.04	102.93	7500.00	7418.95	98.92
8. IOC, Bongaigaon	193.00	192.80	99.90	193.00	209.64	108.62	1178.00	1235.90	104.92	1175.00	1302.31	110.84
9. IOC, Paradip	1233.00	444.84	36.08	0.00	0.00	0.00	7521.00	2796.56	37.18	0.00	0.00	0.00
Total IOC	5688.00	4996.21	87.84	4443.00	4375.00	98.47	34695.00	31733.17	91.46	27100.00	27250.57	100.56
10. BPCL, Mumbai	986.00	1167.18	118.37	984.00	997.24	101.35	6016.00	7068.08	117.49	6000.00	6548.03	109.13
11. BPCL, Kochi	781.00	924.47	118.37	779.00	901.47	115.72	4763.00	5509.50	115.67	4750.00	5492.80	115.64
Total BPCL	1767.00	2091.64	118.37	1762.00	1898.71	107.76	10779.00	12577.58	116.69	10750.00	12040.82	112.01
12. HPCL, Mumbai	534.00	630.68	118.10	533.00	696.58	130.69	3259.00	4119.07	126.39	3250.00	3702.95	113.94
13. HPCL, Visakh	682.00	733.58	107.56	680.00	802.48	118.01	4161.00	4398.14	105.70	4150.00	4261.48	102.69
Total HPCL	1216.00	1364.26	112.19	1213.00	1499.07	123.58	7420.00	8517.21	114.79	7400.00	7964.43	107.63
14. CPCL, Manali	863.00	883.03	102.32	861.00	685.02	79.56	5264.00	5295.42	100.60	5250.00	4606.10	87.74
15. CPCL, CBR	82.00	42.37	51.67	82.00	46.21	56.35	501.00	275.49	54.99	500.00	274.08	54.82
Total CPCL	945.00	925.39	97.92	943.00	731.22	77.54	5766.00	5570.91	96.62	5750.00	4880.19	84.87
16. NRL, Numaligarh	247.00	79.93	32.36	246.00	247.77	100.72	1504.00	1243.55	82.68	1500.00	1166.33	77.76
17. MRPL, Mangalore	1233.00	1302.31	105.62	1230.00	976.10	79.36	7521.00	7682.44	102.15	7500.00	7342.72	97.90
18. ONGC, Tatipaka	5.00	7.48	149.59	5.00	5.26	105.12	33.00	41.77	126.57	33.00	26.80	81.21
B. Joint Venture Sector	1233.00	1416.46	114.88	1230.00	1526.64	124.12	7521.00	8774.56	116.67	7500.00	8529.16	113.72
19. BORL, Bina	493.00	501.46	101.72	492.00	619.69	125.95	3008.00	3273.29	108.82	3000.00	3044.69	101.49
20. HMEL, GGSR, Bhatinda	740.00	915.00	123.65	738.00	906.95	122.89	4512.00	5501.28	121.93	4500.00	5484.47	121.88
C. Private Sector	6575.00	7532.23	114.56	6557.00	6783.20	103.45	40110.00	45359.10	113.09	40000.00	43399.60	108.50
21. RIL, Jamnagar	2712.00	2657.71	98.00	2705.00	2731.06	100.96	16545.00	16565.26	100.12	16500.00	15812.69	95.83
22. RIL, SEZ	2219.00	3123.64	140.77	2213.00	3098.26	140.00	13537.00	18284.25	135.07	13500.00	17946.97	132.94
Total RIL	4932.00	5781.35	117.22	4918.00	5829.32	118.53	30082.00	34849.51	115.85	30000.00	33759.66	112.53
23. EOL, Vadinar	1644.00	1750.87	106.50	1639.00	953.88	58.20	10027.00	10509.59	104.81	10000.00	9639.94	96.40
TOTAL(A+B+C)	18910.00	19715.91	104.26	17628.00	18042.96	102.35	115348.00	121500.29	105.33	107533.00	112600.61	104.71

*: Provisional. **:Revised

MINISTRY OF PETROLEUM & NATURAL GAS

Production of Petroleum Products during the month of September 2016 and cumulatively for the period April-September 2016 vis-à-vis April-September 2015

(Qty: '000' Tonnes)

Name of Undertaking/Unit	Planned production during the month	Production during the			Cumulative Production			% variation over last year		% variation during the month under review over planned production
		Month under review *	Corresponding month of last year	Preceding month of current year **	(April-September)			During the month under review	Upto the end of the period	
					Planned production during current year	Actual production during current year*	Actual production during corresponding period of last year**			
(1)	(2)	(3)	(4)	(5)	(5)	(6)	(7)	(8)	(9)	(10)
I. Refinery										
A. Public Sector	10102.899	9871.875	9235.152	10214.544	61989.608	62820.813	57243.239	6.89	9.74	-2.29
1. IOC, Guwahati	85.509	86.128	88.693	91.798	513.232	568.446	620.025	-2.89	-8.32	0.72
2. IOC, Barauni	451.583	474.909	482.503	520.608	2862.339	3019.123	2925.320	-1.57	3.21	5.17
3. IOC, Gujarat	995.293	975.717	1033.695	1120.554	6840.907	6763.981	6206.061	-5.61	8.99	-1.97
4. IOC, Haldia	566.922	614.944	460.151	567.647	3637.287	3647.040	3503.209	33.64	4.11	8.47
5. IOC, Mathura	640.776	710.472	691.182	736.481	4278.423	4477.058	4129.815	2.79	8.41	10.88
6. IOC, Digboi	58.768	46.854	41.774	43.926	301.679	257.089	272.189	12.16	-5.55	-20.27
7. IOC, Panipat	1023.546	1191.923	1245.667	958.808	7490.752	7629.015	7420.117	-4.31	2.82	16.45
8. IOC, Bongaigaon	180.707	191.580	199.474	150.618	1074.909	1077.466	1181.454	-3.96	-8.80	6.02
9. IOC, Paradip	937.300	302.482	0.000	438.308	2978.700	2287.246	0.000	-	-	-67.73
Total IOC	4940.403	4595.009	4243.139	4628.748	29978.229	29726.464	26258.190	8.29	13.21	-6.99
10. BPCL, Mumbai	1111.646	1129.404	962.805	1169.329	6712.068	6798.765	6268.456	17.30	8.46	1.60
11. BPCL, Kochi	815.842	874.634	832.435	889.437	4869.018	5201.695	5180.399	5.07	0.41	7.21
Total BPCL	1927.488	2004.038	1795.240	2058.766	11581.087	12000.460	11448.855	11.63	4.82	3.97
12. HPCL, Mumbai	612.354	583.594	657.770	671.418	3735.359	3801.840	3381.623	-11.28	12.43	-4.70
13. HPCL, Visakh	662.890	648.229	753.008	445.279	3910.776	3990.931	3867.046	-13.91	3.20	-2.21
Total HPCL	1275.244	1231.823	1410.778	1116.697	7646.135	7792.771	7248.668	-12.68	7.51	-3.40
14. CPCL, Manali	783.962	806.812	619.231	876.834	4743.984	4862.927	4208.205	30.29	15.56	2.91
15. CPCL, CBR	49.807	42.431	46.902	46.345	302.929	276.661	278.389	-9.53	-0.62	-14.81
Total CPCL	833.769	849.243	666.133	923.179	5046.913	5139.588	4486.594	27.49	14.55	1.86
16. NRL, Numaligarh	85.095	74.488	247.038	225.300	1225.524	1218.783	1142.523	-69.85	6.67	-12.46
17. MRPL, Mangalore	1037.100	1110.085	867.661	1255.740	6491.200	6902.650	6632.175	27.94	4.08	7.04
18. ONGC, Tatipaka	3.800	7.189	5.164	6.114	20.520	40.096	26.234	39.23	52.84	89.20
B. Joint Venture Sector	1002.567	1181.286	1471.306	1446.705	7060.381	8088.370	7986.067	-19.71	1.28	17.83
19. BOREL, Bina	277.200	453.286	582.623	570.705	2628.600	2949.223	2770.110	-22.20	6.47	63.52
20. HMEL, GGS, Bhatinda	725.367	728.000	888.683	876.000	4431.781	5139.147	5215.957	-18.08	-1.47	0.36
C. Private Sector	7658.168	7828.221	6945.322	8085.682	45399.845	47138.627	44845.758	12.71	5.11	2.22
21. RIL, Jamnagar	2687.290	2712.475	2687.290	2866.692	15779.368	16694.887	15779.368	0.94	5.80	0.94
22. RIL, SEZ	3336.686	3415.406	3336.686	3521.156	19820.264	20313.345	19820.264	2.36	2.49	2.36
Total RIL	6023.976	6127.881	6023.976	6387.848	35599.632	37008.232	35599.632	1.72	3.96	1.72
23. EOL, Vadinar	1634.192	1700.340	921.346	1697.834	9800.213	10130.395	9246.126	84.55	9.56	4.05
TOTAL(A+B+C)	18763.634	18881.382	17651.780	19746.931	114449.834	118047.810	110075.064	6.97	7.24	0.63
II. Fractionators										
ONGC	246.988	248.608	236.337	263.752	1381.512	1509.923	1324.757	5.19	13.98	0.66
OIL	3.600	2.780	3.391	2.752	19.300	16.472	19.317	-18.02	-14.73	-22.78
GAIL	82.483	90.859	96.968	94.017	510.083	536.132	534.460	-6.30	0.31	10.16
D. Total Fractionators	333.071	342.247	336.696	360.521	1910.895	2062.527	1878.534	1.65	9.79	2.76
Grand Total (A+B+C+D)	19096.705	19223.630	17988.476	20107.452	116360.729	120110.336	111953.598	6.87	7.29	0.66

Note: Totals may not tally due to rounding off.

*: Provisional.

**: Revised