

Government of India
Ministry of Petroleum and Natural Gas
Economics & Statistics Division

New Delhi

Dated the 21st December, 2016

Monthly Production Report
November 2016

Crude Oil

- Crude oil production¹ during November 2016 was 2875.75 TMT which is 5.65% and 5.40% lower than target and production achieved in November 2015 respectively. Cumulative crude oil production during April-November, 2016 was 23990.26 TMT which is 1.76% and 3.53% lower than target and production during corresponding period of last year respectively. Unit-wise and state-wise crude oil production is given at Annexure-I. Unit-wise crude oil production for the month of November, 2016 and cumulatively for the period April-November, 2016 vis-à-vis same period of last year has been shown in Table-1 and month-wise in Figure-1.

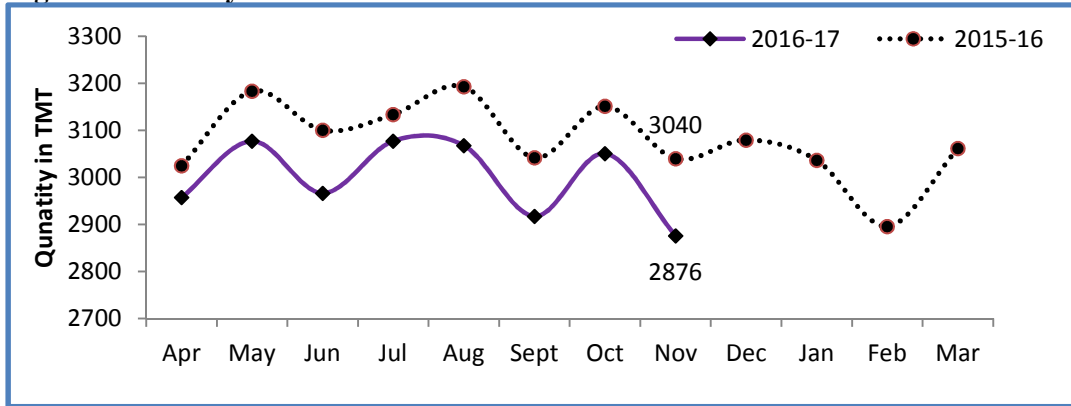
Table-1: Crude Oil Production (in TMT)

Oil Company	Target	November (Month)				April-November (Cumulative)			
	2016-17 (Apr-Mar)	2016-17		2015-16	% over last year	2016-17		2015-16	% over last year
		Target	Prod.*	Prod.		Target	Prod.*	Prod.	
ONGC	22766.00	1867.15	1823.28	1837.04	99.25	14941.69	14724.49	14983.60	98.27
OIL	3480.00	291.79	269.46	264.88	101.73	2200.80	2149.87	2180.49	98.60
PSC Fields	10839.32	888.94	783.01	937.92	83.48	7278.42	7115.90	7704.10	92.37
Total	37085.32	3047.88	2875.75	3039.84	94.60	24420.91	23990.26	24868.19	96.47

*: Provisional

¹ Including condensate

Figure-1: Monthly Crude Oil Production



Unit-wise production details with reasons for shortfall have been given in following sub-sections:

1.1 Crude oil production by ONGC during November, 2016 was 1823.28 TMT which is 2.35% lower than the monthly target and 0.75% less when compared with November 2015. Cumulative crude oil production during April-November, 2016 was 14724.49 TMT which is 1.45% lower than target for the period and 1.73% lower than the production during corresponding period of last year. Reasons for shortfall in production are as under:

- Natural decline from matured & marginal fields of Mumbai high.
- Operational loss in Bassein due to suspected wax deposition & choking in B-193 export pipeline

1.1 Crude oil production by OIL during November, 2016 was 269.46 TMT which is 7.65% lower than monthly target but 1.73% higher than production in November 2015. Cumulative crude oil production during April-November, 2016 was 2149.87 TMT which is 2.31% lower than target for the period and 1.40% lower than the production during corresponding period of last year. The major reason for shortfall in production was less than planned contribution from high producing areas like Greater Hapjan, Greater Chandmari and Nahorkatiya fields primarily on account of rise in water cut.

1.2 Crude oil production by Pvt. /JVs during November 2016 was 783.01 TMT which is 11.92% lower than the monthly target and 16.52% lower than November, 2015. Cumulative crude oil production during April-November, 2016 was 7115.90 TMT which is 2.23% lower than target for the period and 7.63% lower than the production during corresponding period of last year. Reasons for shortfall in production are as under:

- RJ-ON-90/1: Planned shutdown at Mangala Processing Terminal; High Water cut in wells of Bhagyam field & Natural Decline of Mangala wells.

- Natural Decline in Ravva &CB-OS/2.
- Panna-Mukta: PC platform shutdown due to riser integrity issue.
- Closure of 1 well in MA field in KG-DWN-98/3.
- CY-ONN-2002/2: Under Test Production.
- Underperformance of KG- OSN-2001/3.

Natural Gas

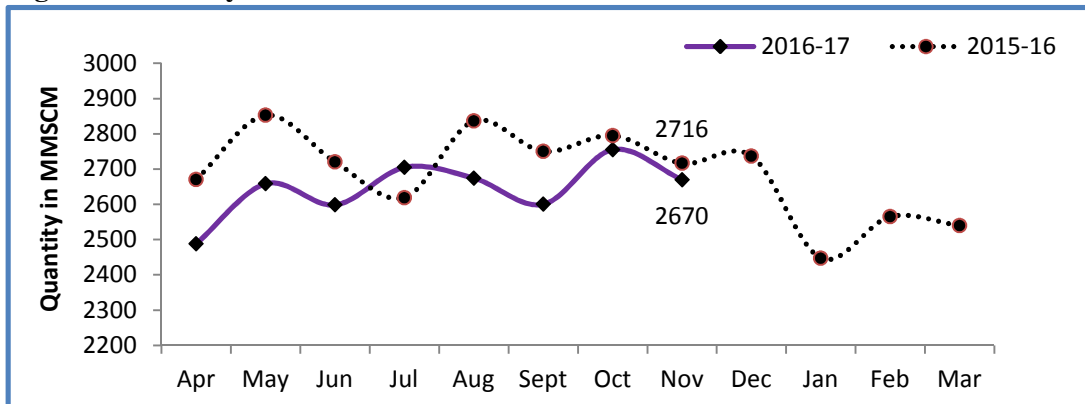
2 Natural gas production during November 2016 was 2669.89 MMSCM which is 7.46% lower than the target for the month and 1.71% lower than the production in November 2015. Cumulative natural gas production during April-November, 2016 was 21148.54 MMSCM which is 4.40% lower than target for the period and 3.70% lower than the production during corresponding period of last year. Unit-wise and state-wise natural gas production is given at Annexure-II. Unit-wise natural gas production for the month of November, 2016 and cumulatively for the period April-November, 2016 vis-à-vis same period of last year has been shown in Table-2 and month-wise in Figure-2.

Table-2: Natural Gas Production (MMSCM)

Oil Company	Target	November (Month)				April-November (Cumulative)			
	2016-17 (Apr-Mar)	2016-17		2015-16	% over last year	2016-17		2015-16	% over last year
		Target	Prod.*	Prod.		Target	Prod.*	Prod.	
ONGC	22743.43	1939.72	1866.93	1776.83	105.07	14683.51	14493.50	14453.15	100.28
OIL	2950.03	243.26	244.91	255.66	95.80	2013.68	1965.06	1853.96	105.99
PSC Fields	8425.44	702.00	558.04	683.82	81.61	5424.83	4689.98	5653.05	82.96
Total	34118.90	2884.98	2669.89	2716.31	98.29	22122.03	21148.54	21960.16	96.30

*: Provisional

Figure-2: Monthly Natural Gas Production



- 2.1 Natural gas production by ONGC during November, 2016 was 1866.93 MMSCM which is 3.75% lower than the monthly target but 5.07% higher when compared with November 2015. Cumulative natural gas production during April-November, 2016 was 14493.50 MMSCM which is 1.29% lower than the cumulative target but 0.28% higher than the production during the corresponding period of last year. Shortfall in production vis-à-vis target was mainly due to decline in reservoir pressure in Bassein field.
- 2.2 Natural gas production by OIL during November, 2016 was 244.91 MMSCM which is 0.68% higher than the monthly target but 4.20% lower than November 2015. Cumulative natural gas production during April-November, 2016 was 1965.06 MMSCM which is 2.41% lower than the cumulative target but 5.99% higher than the production during the corresponding period of last year. Shortfall in production against target was mainly due to decline in production potential in a few high producing gas wells due to unexpected subsurface problems like water and sand ingress.
- 2.3 Natural gas production by Pvt. /JVs during November 2016 was 558.04 MMSCM which is 20.51% lower than the monthly target and 18.39% less when compared with November, 2015. Cumulative natural gas production during April-November, 2016 was 4689.98 MMSCM which is 13.55% lower than the cumulative target and 17.04% lower than the production during the corresponding period of last year. Reasons for shortfall in production are as under:
- Closure of 1 well in MA and 1 well in D1D3 field in KG-DWN-98/3.
 - Panna-Mukta: PC platform shutdown due to riser integrity issue.
 - RJ-ON-90/1: Planned shutdown at Mangala Processing Terminal.
 - Increase in Water cut in few wells in RJ-ON/6.
 - Production from M&S TAPTI stopped in March, 2016.
 - Natural Decline in Ravva.
 - Underperformance of wells in KG- OSN-2001/3.
 - Sohagpur West: Production not increased upto the target envisaged.
 - Raniganj East CBM block: Extended dewatering hampering production.

Refinery Production (in terms of Crude oil processed)

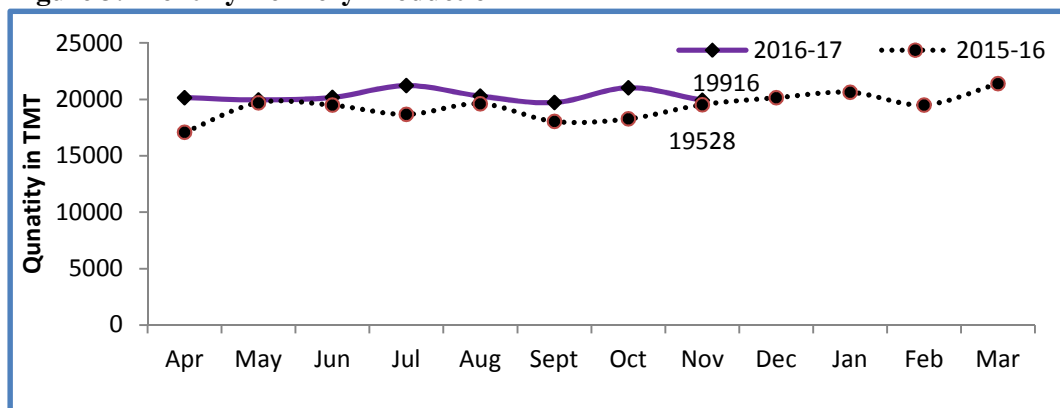
- 3 Refinery production during November, 2016 was 19915.92 TMT which is 3.30% lower than the target for the month but 1.98% higher than the production during corresponding period of last year. Cumulative production during April-November, 2016 was 162444.57 TMT which is 2.03% higher than the target for the period and 8.01% higher than the production during corresponding period of last year. Unit-wise production is given at Annexure-III. Company-wise production for the month of November, 2016 and cumulatively for the period April-November, 2016 vis-à-vis same period of last year has been shown in Table-3 and month-wise in Figure-3.

Table 3: Refinery Production (TMT)

Oil Company	Target	November (Month)				April-November (Cumulative)			
	2016-17 (Apr-Mar)	2016-17		2015-16	% over last year	2016-17		2015-16	% over last year
		Target	Prod.*	Prod.		Target	Prod.*	Prod.	
PSUS	135565.03	11712.08	11446.99	10547.21	108.53	89780.51	90658.32	81109.46	111.77
IOCL	65100.00	5464.89	5145.83	4799.42	107.22	42882.00	42421.74	36755.61	115.42
BPCL	25250.15	2210.99	2233.54	2023.53	110.38	16690.65	17031.25	15846.30	107.48
HPCL	16800.29	1444.93	1534.66	1481.14	103.61	11242.45	11575.63	10969.37	105.53
CPCL	10250.00	903.17	863.44	741.43	116.46	7356.79	7419.24	6290.57	117.94
NRL	2670.00	259.17	262.88	218.68	120.21	1759.84	1703.56	1617.97	105.29
MRPL	15450.00	1425.00	1399.54	1276.17	109.67	9820.00	10450.86	9591.03	108.97
ONGC	44.59	3.93	7.09	6.84	103.64	28.78	56.04	38.62	145.12
JVs	15000.00	1295.34	925.24	1409.14	65.66	10165.42	11125.93	11482.95	96.89
BORL	6000.00	525.00	170.78	501.00	34.09	3900.00	4054.19	4158.60	97.49
HMEL	9000.00	770.34	754.46	908.14	83.08	6265.42	7071.73	7324.35	96.55
Private	89852.65	7588.21	7543.69	7572.07	99.63	59273.69	60660.32	57805.17	104.94
RIL	69561.01	5878.22	5816.97	5878.22	98.96	45707.74	46646.84	45707.74	102.05
EOL	20291.64	1709.99	1726.72	1693.85	101.94	13565.95	14013.48	12097.42	115.84
TOTAL	240417.68	20595.63	19915.92	19528.42	101.98	159219.62	162444.57	150397.58	108.01

*: Provisional

Figure 3: Monthly Refinery Production



3.1 PSU Refineries' production during November, 2016 was 11446.99 TMT which is 2.26% lower than the target for the month but 8.53% higher than the production achieved in the corresponding month of last year. Cumulative production during April-November, 2016 was 90658.32 TMT which is 0.98% higher than the target for the period and 11.77% higher than the production during corresponding period of last year. Reasons for shortfall of refinery production in some PSU refineries are as under:

- ❖ IOCL, Paradip: Throughput lower due to coke upliftment issue.
- ❖ IOCL, Digboi: Guwahati: Lower availability of Assam crude.

- ❖ IOCL, Mathura: Lower throughput due to advancement of DHDT shutdown to Nov-Dec'16 originally planned in December '16.
- ❖ CPCL, Manali: Crude throughput was lower than Target due to deferment of DHDT shutdown from Oct'16 to Nov'16.
- ❖ CPCL, CBR: Crude throughput was lower than target due to HSD containment (lower offtake of HSD) & non-availability of Crude (Narimanam & KG-D6).
- ❖ NRL, Numaligarh: Delay in startup after shutdown.

3.2 Production in JV refineries during November, 2016 was 925.24 TMT which is 28.57% lower than the target for the month and 34.34% lower than the production achieved in the corresponding month of last year. Cumulative production during April-November, 2016 was 11125.93 TMT which is 9.45% higher than the target for the period and 3.11% lower than the production during corresponding period of last year. Reasons for shortfall of refinery production in JVs refineries are as under:

- ❖ BORL's Bina: Throughput was lower than plan as refinery had undertaken planned turnaround during the month, which was originally scheduled in Aug-Sep'16.
- ❖ HMEL's Bhatinda: The throughput is as per the optimized monthly plan.

3.3 Production in private refineries during November, 2016 was 7543.69 TMT which is 0.59% lower than the target for the month and 0.37% lower than the production achieved in the corresponding month of last year. Cumulative production during April-November, 2016 was 60600.32 TMT which is 2.34% higher than the target for the period and 4.94% higher than the production during corresponding period of last year.

3.4 Refinery-wise details of the capacity utilization and production of petroleum products during the month of November, 2016 and cumulatively for the period April-November, 2016 vis-à-vis April-November, 2015 are given at Annexures-IV and V respectively.

Annexure-I

(Para 1)

MINISTRY OF PETROLEUM & NATURAL GAS

Crude Oil Production during the month of November, 2016 and cumulatively for the period April-November, 2016 vis-à-vis April-November, 2015

(Qty: '000' Tonnes)

Name of Undertaking/Unit/State	Planned production during the month	Production during the			Cumulative Production			% variation over last year		% variation during the month under review over planned production
		Month under review *	Corresponding month of last year **	Preceding month of current year **	(April-November)			During the month under review	Upto the end of the period	
					Planned production during current year	Actual production during current year *	Actual production during corresponding period of last year **			
(1)	(2)	(3)	(4)	(5)	(5)	(6)	(7)	(8)	(9)	(10)
1. ONGC	1867.151	1823.279	1837.044	1872.313	14941.688	14724.493	14983.599	-0.75	-1.73	-2.35
Onshore	493.423	489.421	477.906	502.448	3944.181	3934.055	3858.909	2.41	1.95	-0.81
Andhra Pradesh	24.443	23.475	23.999	24.823	185.143	179.042	199.971	-2.18	-10.47	-3.96
Assam ^	82.935	81.657	79.284	82.952	654.104	633.832	644.349	2.99	-1.63	-1.54
Gujarat	367.275	365.569	355.643	375.713	2953.990	2968.347	2847.107	2.79	4.26	-0.46
Tamil Nadu	18.770	18.720	18.980	18.960	150.944	152.834	167.482	-1.37	-8.75	-0.27
Offshore	1373.728	1333.858	1359.138	1369.865	10997.507	10790.438	11124.690	-1.86	-3.00	-2.90
Eastern Offshore	3.179	1.279	2.792	1.337	13.653	10.291	16.089	-54.19	-36.04	-59.77
Western Offshore	1250.727	1218.421	1242.952	1251.967	10056.816	9879.182	10223.012	-1.97	-3.36	-2.58
Condensates	119.822	114.158	113.394	116.561	927.038	900.965	885.589	0.67	1.74	-4.73
2. OIL (Onshore)	291.792	269.464	264.878	275.619	2200.802	2149.867	2180.488	1.73	-1.40	-7.65
Assam	291.285	268.850	264.369	274.980	2196.128	2144.711	2177.154	1.69	-1.49	-7.70
Arunachal Pradesh	0.507	0.614	0.509	0.639	4.674	5.156	3.334	20.63	54.65	21.10
3. DGH (Private / JVC)	888.942	783.006	937.918	902.940	7278.420	7115.902	7704.101	-16.52	-7.63	-11.92
Onshore	721.455	615.710	735.653	728.121	5829.599	5668.466	5936.286	-16.30	-4.51	-14.66
Arunachal Pradesh	4.454	4.085	4.144	4.414	34.536	32.184	33.454	-1.42	-3.80	-8.28
Gujarat	16.456	12.024	12.458	11.583	117.681	93.017	99.668	-3.48	-6.67	-26.93
Rajasthan	693.595	594.595	717.780	706.760	5641.204	5518.904	5801.251	-17.16	-4.87	-14.27
Tamil Nadu	6.951	5.006	1.271	5.364	36.178	24.361	1.913	-	-	-
Offshore	167.487	167.296	202.265	174.819	1448.821	1447.436	1767.815	-17.29	-18.12	-0.11
Eastern Offshore	75.594	77.951	94.348	81.291	647.858	648.288	895.595	-17.38	-27.61	3.12
Gujarat Offshore	25.023	28.466	34.430	31.813	242.773	258.481	273.551	-17.32	-5.51	13.76
Western Offshore	66.870	60.879	73.487	61.715	558.190	540.667	598.669	-17.16	-9.69	-8.96
GRAND TOTAL (1+2+3)	3047.885	2875.749	3039.840	3050.872	24420.910	23990.262	24868.188	-5.40	-3.53	-5.65
Onshore	1506.670	1374.595	1478.437	1506.188	11974.582	11752.388	11975.683	-7.02	-1.86	-8.77
Offshore	1541.215	1501.154	1561.403	1544.684	12446.328	12237.874	12892.505	-3.86	-5.08	-2.60

Note: Totals may not tally due to rounding off.

^: Includes crude oil production of Tripura

*: Provisional. **: Revised

Reasons for shortfall are indicated in the note.

MINISTRY OF PETROLEUM & NATURAL GAS

Natural Gas Production during the month of November, 2016 and cumulatively for the period April-November, 2016 vis-à-vis April-November, 2015

(Qty: Million Cubic Meters)

Name of Undertaking/Unit/State	Planned production during the month	Production during the			Cumulative Production (April-November)			% variation over last year		% variation during the month under review over planned production
		Month under review *	Corresponding month of last year **	Preceding month of current year **	Planned production during current year	Actual production during current year *	Actual production during corresponding period of last year **	During the month under review	Upto the end of the period	
(1)	(2)	(3)	(4)	(5)	(5)	(6)	(7)	(8)	(9)	(10)
1. ONGC	1939.721	1866.932	1776.832	1943.026	14683.514	14493.496	14453.152	5.07	0.28	-3.75
Onshore	447.140	445.325	390.598	454.988	3466.366	3371.136	3166.447	14.01	6.46	-0.41
Andhra Pradesh	79.769	74.507	52.470	76.442	489.659	557.907	389.696	42.00	43.16	-6.60
Assam	35.166	34.119	33.820	35.620	281.591	287.840	268.890	0.88	7.05	-2.98
Gujarat	117.780	129.974	111.505	131.882	975.824	951.090	928.413	16.56	2.44	10.35
Rajasthan	0.411	0.579	0.704	0.477	3.342	2.676	3.848	-17.76	-30.46	40.89
Tamil Nadu	91.125	84.885	70.142	85.723	745.138	633.742	702.548	21.02	-9.79	-6.85
Tripura	122.890	121.261	121.957	124.844	970.812	937.881	873.052	-0.57	7.43	-1.33
Offshore	1492.581	1421.607	1386.234	1488.038	11217.148	11122.360	11286.705	2.55	-1.46	-4.76
Eastern Offshore	57.084	53.299	1.889	54.760	354.418	249.202	135.070	2721.55	84.50	-6.63
Western Offshore	1435.497	1368.308	1384.345	1433.278	10862.730	10873.158	11151.635	-1.16	-2.50	-4.68
2. OIL	243.257	244.911	255.660	245.779	2013.683	1965.059	1853.959	-4.20	5.99	0.68
Assam	227.797	226.019	233.396	225.961	1862.060	1800.979	1712.757	-3.16	5.15	-0.78
Arunachal Pradesh	1.060	0.978	0.954	1.014	9.503	7.938	7.479	2.52	6.14	-7.74
Rajasthan	14.400	17.914	21.310	18.804	142.120	156.142	133.723	-15.94	16.77	24.40
3. DGH (Private / JVC)	702.000	558.043	683.817	566.322	5424.829	4689.983	5653.051	-18.39	-17.04	-20.51
Onshore	105.264	82.801	107.861	93.686	805.606	793.092	814.475	-23.23	-2.63	-21.34
Assam	0.000	0.000	0.000	0.000	0.000	0.000	0.000	0.00	0.00	0.00
Arunachal Pradesh	0.753	1.464	1.397	1.363	5.839	9.888	12.691	4.80	-22.09	94.42
Gujarat	4.966	7.009	7.503	7.557	53.908	61.047	61.577	-6.58	-0.86	41.13
Rajasthan	98.765	73.656	98.854	84.078	741.777	719.390	740.054	-25.49	-2.79	-25.42
Tamil Nadu	0.780	0.672	0.107	0.688	4.082	2.767	0.153	-	-	-
CBM	122.901	50.286	30.682	50.761	660.500	367.510	257.294	63.89	42.84	-59.08
Jharkhand (CBM)	0.266	0.202	0.134	0.309	2.166	1.918	1.274	50.75	50.55	-24.13
Madhya Pradesh (CBM)	54.050	0.472	0.164	0.415	190.500	3.222	0.760	187.80	323.95	-99.13
West Bengal (CBM)	68.585	49.612	30.384	50.037	467.834	362.370	255.260	63.28	41.96	-27.66
Offshore	473.834	424.956	545.274	421.875	3958.723	3529.381	4581.282	-22.07	-22.96	-10.32
Eastern Offshore	318.797	258.503	349.239	259.642	2757.662	2199.096	3050.516	-25.98	-27.91	-18.91
Gujarat Offshore	3.218	6.771	5.422	7.260	26.172	55.006	44.419	24.88	23.83	110.42
Western Offshore	151.820	159.682	190.613	154.973	1174.890	1275.279	1486.347	-16.23	-14.20	5.18
TOTAL (1+2+3)	2884.978	2669.886	2716.309	2755.127	22122.026	21148.538	21960.162	-1.71	-3.70	-7.46
CBM	122.901	50.286	30.682	50.761	660.500	367.510	257.294	63.89	42.84	-59.08
Onshore	795.662	773.037	754.119	794.453	6285.655	6129.287	5834.881	2.51	5.05	-2.84
Offshore	1966.415	1846.563	1931.508	1909.913	15175.871	14651.741	15867.987	-4.40	-7.66	-6.09

Note: Totals may not tally due to rounding off. *: Provisional. **: Revised

CBM: Coal Bed Methane

Reasons for shortfall are indicated in the note.

MINISTRY OF PETROLEUM & NATURAL GAS

Refinery Production (in terms of crude oil processed) during the month of November, 2016 and cumulatively for the period April-November, 2016 vis-à-vis April-November, 2015

(Qty: '000' Tonnes)

Name of Undertaking/Unit	Planned production during the month	Production during the			Cumulative Production			% variation over last year		% variation during the month under review over planned production
		Month under review *	Corresponding month of last year	Preceding month of current year **	(April-November)			During the month under review	Upto the end of the period	
					Planned production during current year	Actual production during current year *	Actual production during corresponding period of last year **			
(1)	(2)	(3)	(4)	(5)	(5)	(6)	(7)	(8)	(9)	(10)
A. Public Sector	11712.082	11446.986	10547.210	11844.711	89780.506	90658.320	81109.462	8.53	11.77	-2.26
1. IOC, Guwahati	82.000	72.169	72.355	72.223	660.400	580.559	666.179	-0.26	-12.85	-11.99
2. IOC, Barauni	516.001	523.376	578.696	481.318	4119.994	4347.689	4307.581	-9.56	0.93	1.43
3. IOC, Gujarat	1095.744	1185.010	1218.065	1134.242	9245.639	9594.413	8979.365	-2.71	6.85	8.15
4. IOC, Haldia	525.139	544.002	696.871	678.899	5184.665	5264.861	5030.024	-21.94	4.67	3.59
5. IOC, Mathura	720.001	714.072	735.969	804.470	5890.002	6131.104	5775.317	-2.98	6.16	-0.82
6. IOC, Digboi	58.000	46.561	42.595	50.998	418.000	348.377	373.762	9.31	-6.79	-19.72
7. IOC, Panipat	1241.008	1294.066	1300.586	1301.799	10033.933	10336.903	9983.997	-0.50	3.53	4.28
8. IOC, Bongaigaon	172.000	212.765	154.282	211.973	1591.963	1660.640	1639.390	37.91	1.30	23.70
9. IOC, Paradip	1055.000	553.805	0.000	806.829	5737.400	4157.197	0.000	-	-	-47.51
Total IOC	5464.893	5145.826	4799.419	5542.751	42881.995	42421.743	36755.615	7.22	15.42	-5.84
10. BPCL, Mumbai	1187.657	1221.357	1116.467	1244.669	9373.953	9534.107	8790.824	9.39	8.46	2.84
11. BPCL, Kochi	1023.333	1012.186	907.061	975.462	7316.698	7497.143	7055.477	11.59	6.26	-1.09
Total BPCL	2210.990	2233.543	2023.528	2220.131	16690.651	17031.250	15846.301	10.38	7.48	1.02
12. HPCL, Mumbai	663.300	715.370	673.783	720.124	5394.840	5554.564	5074.317	6.17	9.46	7.85
13. HPCL, Visakh	781.635	819.294	807.360	803.629	5847.614	6021.065	5895.054	1.48	2.14	4.82
Total HPCL	1444.935	1534.664	1481.143	1523.753	11242.454	11575.629	10969.371	3.61	5.53	6.21
14. CPCL, Manali	854.000	825.144	700.286	938.505	6956.000	7059.069	5934.481	17.83	18.95	-3.38
15. CPCL, CBR	49.167	38.300	41.141	46.384	400.792	360.173	356.087	-6.91	1.15	-22.10
Total CPCL	903.167	863.444	741.427	984.889	7356.792	7419.242	6290.568	16.46	17.94	-4.40
16. NRL, Numaligarh	259.166	262.881	218.684	197.121	1759.836	1703.557	1617.966	20.21	5.29	1.43
17. MRPL, Mangalore	1425.000	1399.540	1276.170	1368.885	9820.000	10450.862	9591.026	9.67	8.97	-1.79
18. ONGC, Tatipaka	3.932	7.088	6.839	7.181	28.778	56.038	38.616	3.64	45.12	80.27
B. Joint Venture Sector	1295.339	925.239	1409.141	1426.126	10165.424	11125.927	11482.950	-34.34	-3.11	-28.57
19. BORL, Bina	525.000	170.781	501.004	610.126	3900.000	4054.194	4158.604	-65.91	-2.51	-67.47
20. HMEL, GGSR, Bhatinda	770.339	754.458	908.137	816.000	6265.424	7071.733	7324.346	-16.92	-3.45	-2.06
C. Private Sector	7588.210	7543.692	7572.071	7757.526	59273.694	60660.319	57805.167	-0.37	4.94	-0.59
21. RIL, Jamnagar	2734.830	2654.815	2734.830	2756.656	21362.647	21976.733	21362.647	-2.93	2.87	-2.93
22. RIL, SEZ	3143.390	3162.153	3143.390	3223.700	24345.096	24670.104	24345.096	0.60	1.34	0.60
Total RIL	5878.220	5816.968	5878.220	5980.356	45707.743	46646.837	45707.743	-1.04	2.05	-1.04
23. EOL, Vadinar	1709.990	1726.724	1693.851	1777.170	13565.951	14013.482	12097.424	1.94	15.84	0.98
TOTAL(A+B+C)	20595.631	19915.917	19528.422	21028.363	159219.624	162444.566	150397.579	1.98	8.01	-3.30

Note: Totals may not tally due to rounding off. *: Provisional. **: Revised

Reasons for shortfall are indicated in the note.

MINISTRY OF PETROLEUM & NATURAL GAS

(Para 3.4)

Refinery-wise Capacity Utilisation during the month of November, 2016 and cumulatively for the period April-November 2016 vis-à-vis April-November 2015

(Qty: '000' Tonnes)

Name of Undertaking/Unit	November,2016			November,2015			Cumulative (April - November)					
	Prorated Installed Capacity	Actual Crude T'put *	% Utilisation of Installed Capacity	Prorated Installed Capacity	Actual Crude T'put	% Utilisation of Installed Capacity	2016-17			2015-16		
							Prorated Installed Capacity	Actual Crude T'put *	% Utilisation of Installed Capacity	Prorated Installed Capacity	Actual Crude T'put **	% Utilisation of Installed Capacity
(1)	(2)	(3)	(4)	(5)	(6)	(7)	(8)	(9)	(10)	(11)	(12)	(13)
A. Public Sector	11101.00	11446.99	103.12	9841.00	10547.21	107.18	90291.00	90658.32	100.41	80044.00	81109.46	101.33
1. IOC, Guwahati	82.00	72.17	88.01	82.00	72.36	88.24	668.00	580.56	86.91	667.00	666.18	99.88
2. IOC, Barauni	493.00	523.38	106.16	492.00	578.70	117.62	4011.00	4347.69	108.39	4000.00	4307.58	107.69
3. IOC, Gujarat	1126.00	1185.01	105.24	1123.00	1218.07	108.47	9158.00	9594.41	104.77	9133.00	8979.37	98.32
4. IOC, Haldia	616.00	544.00	88.31	615.00	696.87	113.31	5014.00	5264.86	105.00	5000.00	5030.02	100.60
5. IOC, Mathura	658.00	714.07	108.52	656.00	735.97	112.19	5348.00	6131.10	114.64	5333.00	5775.32	108.29
6. IOC, Digboi	53.00	46.56	87.85	53.00	42.60	80.37	435.00	348.38	80.09	433.00	373.76	86.32
7. IOC, Panipat	1233.00	1294.07	104.95	1230.00	1300.59	105.74	10027.00	10336.90	103.09	10000.00	9984.00	99.84
8. IOC, Bongaigaon	193.00	212.77	110.24	193.00	154.28	79.94	1571.00	1660.64	105.71	1567.00	1639.39	104.62
9. IOC, Paradip	1233.00	553.81	44.92	0.00	0.00	0.00	10027.00	4157.20	41.46	0.00	0.00	0.00
Total IOC	5688.00	5145.83	90.47	4443.00	4799.42	108.02	46260.00	42421.74	91.70	36133.00	36755.61	101.72
10. BPCL, Mumbai	986.00	1221.36	123.87	984.00	1116.47	113.46	8022.00	9534.11	118.85	8000.00	8790.82	109.89
11. BPCL, Kochi	781.00	1012.19	129.60	779.00	907.06	116.44	6351.00	7497.14	118.05	6333.00	7055.48	111.41
Total BPCL	1767.00	2233.54	126.40	1762.00	2023.53	114.84	14373.00	17031.25	118.49	14333.00	15846.30	110.56
12. HPCL, Mumbai	534.00	715.37	133.96	533.00	673.78	126.41	4345.00	5554.56	127.84	4333.00	5074.32	117.11
13. HPCL, Visakh	682.00	819.29	120.13	680.00	807.36	118.73	5548.00	6021.07	108.53	5533.00	5895.05	106.54
Total HPCL	1216.00	1534.66	126.21	1213.00	1481.14	122.11	9894.00	11575.63	117.00	9867.00	10969.37	111.17
14. CPCL, Manali	863.00	825.14	95.61	861.00	700.29	81.33	7019.00	7059.07	100.57	7000.00	5934.48	84.78
15. CPCL, CBR	82.00	38.30	46.71	82.00	41.14	50.17	668.00	360.17	53.92	667.00	356.09	53.39
Total CPCL	945.00	863.44	91.37	943.00	741.43	78.62	7688.00	7419.24	96.50	7667.00	6290.57	82.05
16. NRL, Numaligarh	247.00	262.88	106.43	246.00	218.68	88.90	2005.00	1703.56	84.97	2000.00	1617.97	80.90
17. MRPL, Mangalore	1233.00	1399.54	113.51	1230.00	1276.17	103.75	10027.00	10450.86	104.23	10000.00	9591.03	95.91
18. ONGC, Tatipaka	5.00	7.09	141.75	5.00	6.84	136.77	44.00	56.04	127.36	44.00	38.62	87.76
B. Joint Venture Sector	1233.00	925.24	75.04	1230.00	1409.14	114.56	10027.00	11125.93	110.96	10000.00	11482.95	114.83
19. BORL, Bina	493.00	170.78	34.64	492.00	501.00	101.83	4011.00	4054.19	101.08	4000.00	4158.60	103.97
20. HMEL, GGSR, Bhatinda	740.00	754.46	101.95	738.00	908.14	123.05	6016.00	7071.73	117.55	6000.00	7324.35	122.07
C. Private Sector	6575.00	7543.69	114.73	6557.00	7572.07	115.48	53479.00	60660.32	113.43	53333.00	57805.17	108.39
21. RIL, Jamnagar	2712.00	2654.82	97.89	2705.00	2734.83	101.10	22060.00	21976.73	99.62	22000.00	21362.65	97.10
22. RIL, SEZ	2219.00	3162.15	142.50	2213.00	3143.39	142.04	18049.00	24670.10	136.68	18000.00	24345.10	135.25
Total RIL	4932.00	5816.97	117.94	4918.00	5878.22	119.52	40110.00	46646.84	116.30	40000.00	45707.74	114.27
23. EOL, Vadinar	1644.00	1726.72	105.03	1639.00	1693.85	103.35	13370.00	14013.48	104.81	13333.00	12097.42	90.73
TOTAL(A+B+C)	18910.00	19915.92	105.32	17628.00	19528.42	110.78	153798.00	162444.57	105.62	143377.00	150397.58	104.90

*: Provisional. **:Revised

MINISTRY OF PETROLEUM & NATURAL GAS

Production of Petroleum Products during the month of November 2016 and cumulatively for the period April-November 2016 vis-à-vis April-November 2015

(Qty: '000' Tonnes)

Name of Undertaking/Unit	Planned production during the month	Production during the			Cumulative Production			% variation over last year		% variation during the month under review over planned production
		Month under review *	Corresponding month of last year	Preceding month of current year **	(April-November)			During the month under review	Upto the end of the period	
					Planned production during current year	Actual production during current year*	Actual production during corresponding period of last year**			
(1)	(2)	(3)	(4)	(5)	(5)	(6)	(7)	(8)	(9)	(10)
I. Refinery										
A. Public Sector	11051.042	10960.794	10129.431	11280.287	83902.844	85061.895	76728.916	8.21	10.86	-0.82
1. IOC, Guwahati	86.546	93.821	95.411	94.517	685.280	756.784	813.719	-1.67	-7.00	8.41
2. IOC, Barauni	489.788	476.301	537.717	452.822	3774.181	3948.246	3979.800	-11.42	-0.79	-2.75
3. IOC, Gujarat	1055.133	1170.824	1164.773	1046.491	8789.898	8981.296	8583.893	0.52	4.63	10.96
4. IOC, Haldia	477.639	495.328	649.749	638.056	4722.079	4780.424	4594.614	-23.77	4.04	3.70
5. IOC, Mathura	708.671	623.905	732.367	759.389	5728.650	5860.352	5597.279	-14.81	4.70	-11.96
6. IOC, Digboi	58.668	47.432	39.774	51.318	419.987	355.839	364.936	19.25	-2.49	-19.15
7. IOC, Panipat	1263.180	1367.689	1320.834	1386.464	9978.032	10383.168	10054.644	3.55	3.27	8.27
8. IOC, Bongaigaon	179.358	207.647	115.355	208.178	1441.420	1493.291	1443.787	80.01	3.43	15.77
9. IOC, Paradip	949.200	516.278	0.000	675.211	4899.500	3478.735	0.000	-	-	-45.61
Total IOC	5268.184	4999.225	4655.980	5312.446	40439.028	40038.135	35432.672	7.37	13.00	-5.11
10. BPCL, Mumbai	1140.847	1188.539	1060.551	1196.566	8994.266	9183.870	8408.647	12.07	9.22	4.18
11. BPCL, Kochi	928.964	969.469	880.416	930.580	6725.940	7101.745	6683.994	10.11	6.25	4.36
Total BPCL	2069.811	2158.008	1940.967	2127.146	15720.206	16285.615	15092.641	11.18	7.90	4.26
12. HPCL, Mumbai	612.353	683.981	671.843	684.214	4980.480	5170.035	4728.337	1.81	9.34	11.70
13. HPCL, Visakh	719.095	763.863	755.037	715.598	5381.550	5470.392	5402.542	1.17	1.26	6.23
Total HPCL	1331.448	1447.844	1426.880	1399.812	10362.030	10640.427	10130.879	1.47	5.03	8.74
14. CPCL, Manali	771.898	747.823	630.325	889.765	6312.845	6500.515	5403.873	18.64	20.29	-3.12
15. CPCL, CBR	49.519	38.504	41.796	46.205	403.618	361.370	361.799	-7.88	-0.12	-22.24
Total CPCL	821.417	786.327	672.121	935.970	6716.463	6861.885	5765.672	16.99	19.01	-4.27
16. NRL, Numaligarh	256.002	265.878	217.270	202.119	1745.117	1686.780	1593.470	22.37	5.86	3.86
17. MRPL, Mangalore	1300.300	1296.639	1209.479	1295.942	8891.600	9495.231	8675.713	7.21	9.45	-0.28
18. ONGC, Tatipaka	3.880	6.873	6.734	6.852	28.400	53.822	37.870	2.07	42.12	77.15
B. Joint Venture Sector	1209.467	901.572	1296.848	1382.265	9503.532	10372.207	10717.701	-30.48	-3.22	-25.46
19. BOREL, Bina	484.100	130.737	445.803	571.265	3596.800	3651.225	3772.464	-70.67	-3.21	-72.99
20. HMEL, GGSR, Bhatinda	725.367	770.835	851.045	811.000	5906.732	6720.982	6945.236	-9.42	-3.23	6.27
C. Private Sector	7981.935	7501.864	8052.694	7782.835	61717.491	62423.326	60206.800	-6.84	3.68	-6.01
21. RIL, Jamnagar	2760.105	2468.859	2760.105	2639.557	21583.560	21803.303	21583.560	-10.55	1.02	-10.55
22. RIL, SEZ	3569.437	3355.633	3569.437	3476.326	27028.932	27145.304	27028.932	-5.99	0.43	-5.99
Total RIL	6329.542	5824.492	6329.542	6115.883	48612.492	48948.607	48612.492	-7.98	0.69	-7.98
23. EOL, Vadinar	1652.393	1677.372	1723.152	1666.952	13104.999	13474.719	11594.308	-2.66	16.22	1.51
TOTAL(A+B+C)	20242.444	19364.230	19478.972	20445.387	155123.866	157857.428	147653.417	-0.59	6.91	-4.34
II. Fractionators										
ONGC	261.697	255.141	281.780	254.151	1906.217	2020.412	1883.623	-9.45	7.26	-2.51
OIL	3.750	3.206	3.432	3.046	26.900	22.724	26.616	-6.59	-14.62	-14.51
GAIL	88.735	96.242	99.181	100.697	682.231	733.071	732.252	-2.96	0.11	8.46
D. Total Fractionators	354.181	354.589	384.393	357.894	2615.349	2776.207	2642.491	-7.75	5.06	0.12
Grand Total (A+B+C+D)	20596.625	19718.819	19863.365	20803.281	157739.215	160633.635	150295.908	-0.73	6.88	-4.26

Note: Totals may not tally due to rounding off.

*: Provisional.

**:Revised