

**Brief note on the Production Performance of Oil & Natural Gas Sector for the month of November, 2015 and cumulatively for the period April-November, 2015 vis-à-vis April-November, 2014**

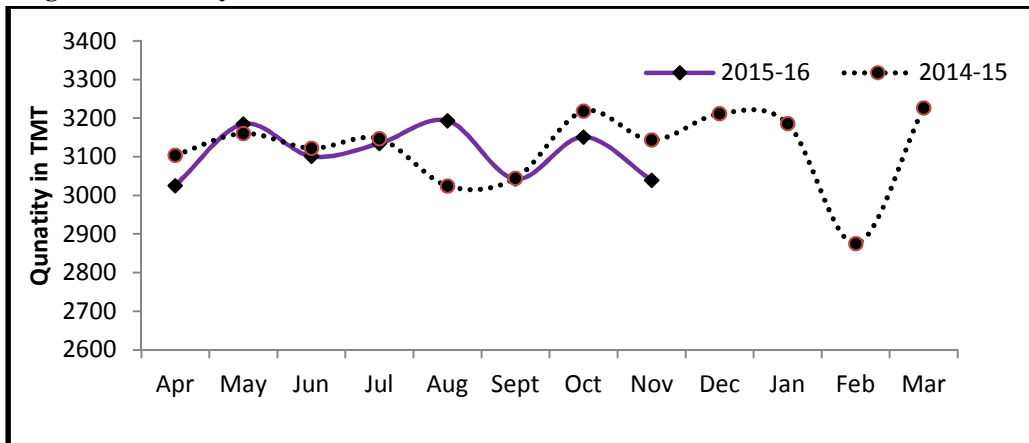
**1. Crude Oil Production**

**1.1 Indigenous crude oil production (including condensate)** during November, 2015 was 3039.518 TMT which is 0.55% higher than the target for the month and 3.30% lower than the production during corresponding period of last year. Cumulative crude oil production during April-November, 2015 was 24870.855 TMT which is 1.37% higher than target for the period and 0.37% lower than the production during corresponding period of last year. Unit-wise and state-wise crude oil production is given at Annexure-I. Unit-wise crude oil production (including condensate) for the month of November, 2015 and cumulatively for the period April-November, 2015 vis-à-vis same period of last year has been shown in Table-1.1 and month-wise in Figure-1.1

**Table 1.1: Crude Oil Production (TMT)**

Oil Company	Target	November (Month)				April-November (Cumulative)			
	2015-16 (Apr-Mar)	2015-16		2014-15	% over last year	2015-16		2014-15	% over last year
		Target	Prod.	Prod.		Target	Prod.	Prod.	
ONGC	22732	1846	1838	1862	98.72	15030	14988	14829	101.08
OIL	3595	296	265	285	92.82	2365	2180	2290	95.20
PSC Fields	10719	880	937	996	94.03	7138	7702	7844	98.20
<b>Total</b>	<b>37046</b>	<b>3023</b>	<b>3040</b>	<b>3143</b>	<b>96.70</b>	<b>24534</b>	<b>24871</b>	<b>24963</b>	<b>99.63</b>

**Figure-1: Monthly Crude Oil Production**



**1.2 ONGC's** crude oil production during November, 2015 was 1837.993 TMT which is 0.45% lower than the target for the month and 1.28% lower than the production achieved in the corresponding month of last year. ONGC's cumulative production during April-November, 2015 was 14988.178 TMT which is 0.28% lower than the cumulative target and 1.08% higher than the production during the corresponding period of last year. The shortfall in ONGC's production was due to following reason:

- Gujarat, Mehsana: Less Air injection in Santhal field, increasing water cut, power shut down, ceasure of high potential wells of Nandasan field & de-optimization of gas lift.
- Gujarat, Ahmedabad: Poor influx, ceasure of wells, increase in water cut, power shutdown & delayed / less gain from Gamij Field.
- Gujarat, Cambay: Less than envisaged production from Nadiad and Vadatal.
- Assam: Low Gas injection pressure, power shutdown & poor influx.
- Tamilnadu, Karaikal: Less than anticipated production from Madanam field.
- Offshore: Less production from Cluster-7 & WO-16 in Mumbai high. Less gas / condensate receipt from offshore.

**1.3 OIL's** crude oil production during November 2015 was 264.878 TMT which is 10.56% lower than the target for the month and 7.18% lower than the production achieved in the corresponding month of last year. OIL's cumulative production during April-November, 2015 was 2180.488 TMT which is 7.80% lower than the cumulative target and 4.80% lower than the production during the corresponding period of last year. Reasons for shortfall in production are given below:

- Rise in water cut in wells of Greater Chandmari and Greater Hapjan Fields
- Permanent loss at Makum & Hapjan OCS after re-opening of wells
- Loss in 3 days production during Bandhs
- Less than planned contribution from workover & new wells.

**1.4 Pvt./JVs'** crude oil production during November, 2015 was 936.647 TMT which is 6.39% higher than the target for the month and 5.97% lower than production of corresponding month of last year. Pvt./JVs' cumulative production during April-November, 2015 was 7702.189 TMT which is 7.90% higher than the cumulative target and 1.80% lower than the production during the corresponding period of last year. Reasons for shortfall in production are given below:

- Cairn: Natural decline in Ravva, Mangala and underperformance of Bhagyam wells in RJ-ON-90/1
- RIL: Under performance of wells in KG-D6
- JV of ONGC,BG&RIL: Natural decline in Panna Mukta
- GEOENPRO: Sand ingress in Kharsang

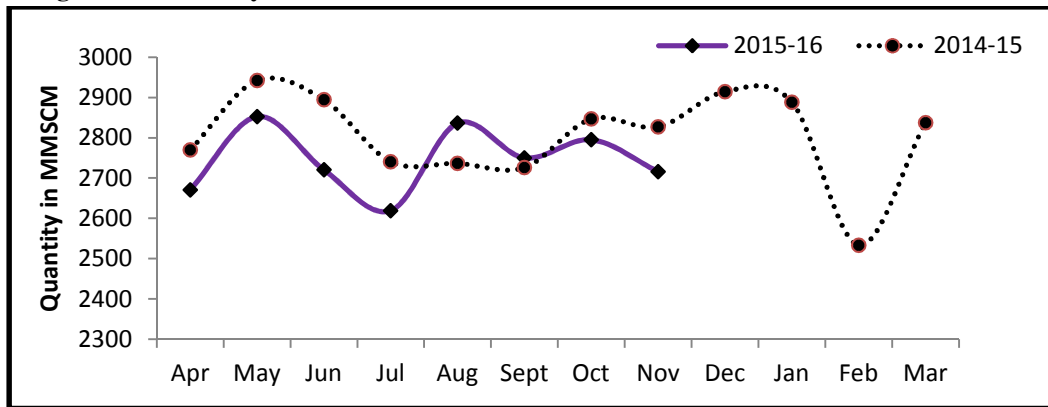
## 2. Natural Gas Production

**2.1 Natural Gas Production** during November, 2015 was 2716.200 MMSCM which is 7.27% lower than the target for the month and 3.92% lower than the production during corresponding period of last year. Cumulative natural gas production during April-November, 2015 was 21960.009 MMSCM which is 5.93% lower than the target for the period and 2.33 lower than the production during corresponding period of last year. Unit-wise and state-wise natural gas production is given at Annexure-II. Unit-wise natural gas production for the month of November, 2015 and cumulatively for the period April-November, 2015 vis-à-vis same period of last year has been shown in Table-2.1 and month-wise in Figure-2.1.

**Table 2.1: Natural Gas Production (MMSCM)**

Oil Company	Target	November (Month)				April-November (Cumulative)			
	2015-16 (Apr-Mar)	2015-16		2014-15	% over last year	2015-16		2014-15	% over last year
		Target	Prod.	Prod.		Target	Prod.	Prod.	
ONGC	23908	1995	1777	1846	96.24	15725	14453	14699	98.33
OIL	3010	257	256	233	109.50	2012	1854	1826	101.52
PSC Fields	8362	677	684	747	91.52	5609	5653	5957	94.89
<b>Total</b>	<b>35280</b>	<b>2929</b>	<b>2716</b>	<b>2827</b>	<b>96.08</b>	<b>23345</b>	<b>21960</b>	<b>22483</b>	<b>97.67</b>

**Figure-2.1: Monthly Natural Gas Production**



**2.2 ONGC's** natural gas production during November, 2015 was 1776.830 MMSCM which is 10.93% lower than the target for the month and 3.76% lower than the production achieved in the corresponding month of last year. ONGC's cumulative natural gas production during April-November, 2015 was 14453.152 MMSCM which is 8.09% lower than the cumulative target and 1.67% lower than the production during the corresponding period of last year. Reasons for the shortfall are given below:

- ❖ Eastern Offshore: Delay in commencement of production from one deep water well. Closure of both the deep water wells of G1 field (G1-10 & 11) due to problem with the sub-sea

Master Control system. Production resumed from both the wells in end November/ beginning December, 2015.

- ❖ Offshore, Bassein & Satellite: Less production from new well/side-track wells and decline in Bassein fields
- ❖ Gujarat, Ahmedabad: Closure of wells due to unplanned shut down of GAIL Gas line from Ahmedabad/Kalol to Ramol. Decline in associated gas production in South Kadi & Gamji fields
- ❖ Andhra Pradesh, Rajahmundry: Closure of 42 wells due to repair of GAIL pipelines in Tatipaka-Lanco & Endamaru-Oduru sections.
- ❖ Assam: Decline in associated gas production in Geleki & Lakwa fields
- ❖ Tripura: Less off take by consumers due to operational issues.
- ❖ Tamilnadu, Cauvery: Closure of wells due to less off-take by consumers in Ramnad area in Karaikal.

**2.3 OIL's** natural gas production during November, 2015 was 255.660 MMSCM which is 0.70% lower than the target for the month and 9.50% higher than the production achieved in the corresponding month of last year. OIL's cumulative natural gas production during April-November, 2015 was 1853.959 MMSCM which is 7.83% lower than the cumulative target and 1.52% higher than the production during the corresponding period of last year. Reasons for the shortfall are given below:

- Shortfall is mainly due to low upliftment by Lakwa Thermal Power Station and Brahmaputra Crackers & Polymers Limited.
- Issues related to land acquisition delayed movement of rigs to proposed forward locations.
- In KG Basin, the drilling of 1<sup>st</sup> HPHT well could not start due to resistance by local villagers on Rig movement over Vivekananda Bridge. However, with OIL's continuous efforts and liaison with Local and Govt Authority, rig movement has started on 31.10.2015.
- The areas planned for seismic survey during the year 2015-16 in Assam and AP are mostly in very low lying catchment areas of river Brahmaputra which were flooded from April to June, 2015 due to early onset of monsoon in the area. The post monsoon operation will start from mid-December, 2015 as the water level in the area has receded now.

**2.4 Pvt. /JVs'** natural gas production during November, 2015 was 683.710 MMSCM which is 0.99% higher than the target for the month and 8.48% lower than the production achieved in the corresponding month of last year. Pvt. /JV's cumulative natural gas production during April-November, 2015 was 5652.898 MMSCM which is 0.79% higher than the cumulative target and 5.11% lower than the production during the corresponding period of last year. Reasons for the shortfall are given below:

- RIL (KG-D6): Underperformance of MA wells.
- JV of BG, RIL & ONGC (M&S Tapti): Operator proposed for field abandonment.
- Cairn(CB-OS/2 & Ravva): Decline in gas production
- GSPC(KG-OSN-2001/3): Decline in gas production
- CBM: Extended dewatering in Raniganj South (GEECL), Delayed forest clearance in Raniganj East (Essar).

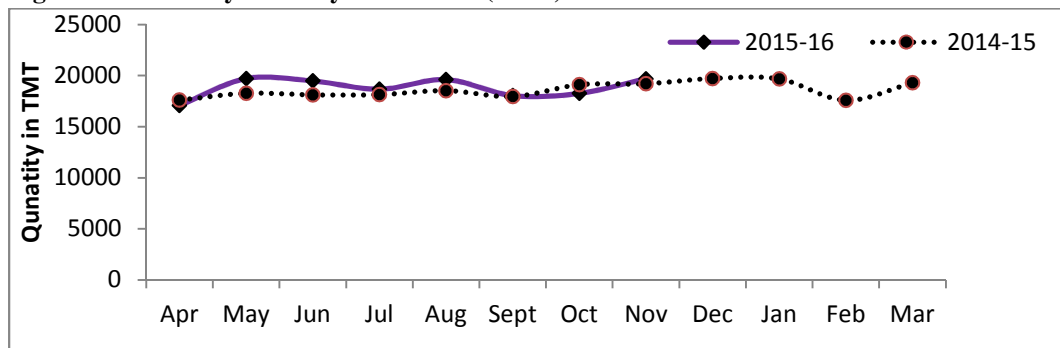
### 3. Refinery Production (in terms of Crude oil processed):

**3.1 Refinery production** during November, 2015 was 19695.118 TMT which is 5.26% higher than the target for the month and 2.53% higher than the production during corresponding period of last year. Cumulative production during April-November, 2015 was 150564.255 TMT which is 1.84% higher than the target for the period and 2.45% higher than the production during corresponding period of last year. Unit-wise production is given at Annexure-III. Unit-wise production for the month of November, 2015 and cumulatively for the period April-November, 2015 vis-à-vis same period of last year has been shown in Table-3.1 and month-wise in Figure-3.1.

**Table 3.1: Refinery Production (TMT)**

Oil Company	Target	November (Month)				April-November (Cumulative)			
	2015-16 (Apr-Mar)	2015-16		2014-15	% over last year	2015-16		2014-15	% over last year
		Target	Actual	Actual		Target	Actual	Actual	
IOCL	55000	4672	4799	4539	105.75	36128	36756	35471	103.62
BPCL	23197	1790	2024	1989	101.72	15527	15846	15317	103.46
HPCL	16200	1392	1481	1406	105.36	10541	10969	10227	107.26
CPCL	10800	918	741	894	82.97	7069	6291	7108	88.50
NRL	2700	235	219	226	96.65	1753	1618	1926	84.01
MRPL	15250	1350	1276	1252	101.96	9500	9591	9167	104.63
ONGC	61	5	7	5	130.51	42	39	34	114.25
BORL	5200	500	501	595	84.17	3200	4159	4056	102.52
HMEL	9000	738	908	901	100.79	6000	7324	4278	171.20
RIL	68042	5708	6045	5708	105.91	45767	45874	45767	100.24
EOL	18793	1404	1694	1695	99.96	12316	12097	13612	88.88
<b>TOTAL</b>	<b>224242</b>	<b>18711</b>	<b>19695</b>	<b>19209</b>	<b>102.53</b>	<b>147843</b>	<b>150564</b>	<b>146962</b>	<b>102.45</b>

**Figure 3.1: Monthly Refinery Production (TMT)**



**3.2 PSU Refineries' production** during November, 2015 was 10547.210 TMT which is 1.79% higher than the target for the month and 2.30% higher than the production achieved in the corresponding month of last year. Cumulative production of PSUs during April-November, 2015 was 81109.442 TMT which is 0.68% higher than the cumulative target and 2.35% higher than the production during the corresponding period of last year. Reasons for shortfalls in PSU refineries are given below:

- ❖ IOCL, Guwahati & Digboi: Throughput restricted due to lower Assam crude availability
- ❖ IOCL, Bongaigaon: Shifting of planned shutdown from Oct'15 to Nov'15.
- ❖ CPCL, Manali: Production lower due to vacuum gas oil (VGO) containment as only one Make up Gas (MUG) compressor is in operation in Hydrocracker Unit.
- ❖ MRPL, Mangalore: Throughput reduced due to CDU1 emergency shut down on 12.11.2015 due to Vacuum Heater coil leak. Unit started back on 19.11.2015
- ❖ NRL, Numaligarh: Lower throughput due to lower availability of Assam crude

**3.3 Production in JV refineries** during November, 2015 was 1409.141 TMT which is 13.85% higher than the target for the month and 5.82% lower than the production achieved in the corresponding month of last year. Cumulative production in JV refineries during April-November, 2015 was 11482.950 TMT which is 24.81% higher than the cumulative target and 37.78% higher than the production during the corresponding period of last year. Reasons for shortfalls in PSU refineries are given below:

- ❖ BORL, Bina: Planned shutdown of Hydrogen unit for catalyst replacement.

**3.4 Production in private refineries** during November, 2015 was 7738.766 TMT which is 8.82% lower than the target for the month and 4.55% lower than the production achieved in the corresponding month of last year. Cumulative production in private refineries during April-November, 2015 was 57971.862 TMT which is 0.19% lower than the cumulative target and 2.37% lower than the production during the corresponding period of last year.

**3.5** Refinery-wise details of the capacity utilization and Production of petroleum products during the month of November, 2015 and cumulatively for the period April-November, 2015 vis-à-vis April-November,2014 are given at Annexures-IV and V respectively.

\*\*\*\*\*

## Annexure-I

(Para 1.1)

## MINISTRY OF PETROLEUM &amp; NATURAL GAS

Review of Crude Oil Production during the month of November, 2015 and cumulatively for the period April-November, 2015 vis-à-vis April-November, 2014

(Qty: '000' Tonnes)

Name of Undertaking/Unit/State	Planned production during the month	Production during the			Cumulative Production			% variation over last year		% variation during the month under review over planned production
		Month under review *	Corresponding month of last year	Preceding month of current year	(April - November)			During the month under review	Upto the end of the period	
					Planned production during current year	Actual production during current year **	Actual production during corresponding period of last year			
(1)	(2)	(3)	(4)	(5)	(6)	(7)	(8)	(9)	(10)	(11)
<b>1. ONGC</b>	<b>1846.258</b>	<b>1837.993</b>	<b>1861.899</b>	<b>1909.353</b>	<b>15030.228</b>	<b>14988.178</b>	<b>14828.730</b>	<b>-1.28</b>	<b>1.08</b>	<b>-0.45</b>
<b>Onshore</b>	<b>506.527</b>	<b>478.855</b>	<b>498.902</b>	<b>493.951</b>	<b>4027.769</b>	<b>3863.488</b>	<b>4103.378</b>	<b>-4.02</b>	<b>-5.85</b>	<b>-5.46</b>
Andhra Pradesh	23.578	23.999	19.812	24.886	186.154	199.970	163.119	21.13	22.59	1.79
Assam ^	84.478	79.284	86.284	80.807	657.140	644.349	739.698	-8.11	-12.89	-6.15
Gujarat	375.828	355.829	374.776	367.459	3008.047	2848.385	3044.862	-5.06	-6.45	-5.32
Tamil Nadu	22.643	19.743	18.030	20.799	176.428	170.784	155.700	9.50	9.69	-12.81
<b>Offshore</b>	<b>1339.731</b>	<b>1359.138</b>	<b>1362.997</b>	<b>1415.402</b>	<b>11002.459</b>	<b>11124.690</b>	<b>10725.351</b>	<b>-0.28</b>	<b>3.72</b>	<b>1.45</b>
Eastern Offshore	0.895	2.792	1.824	2.339	8.391	16.089	10.454	53.07	53.90	211.96
Western Offshore	1222.857	1242.952	1241.670	1293.312	10067.603	10223.012	9729.412	0.10	5.07	1.64
Condensates	115.979	113.394	119.503	119.751	926.465	885.589	985.485	-5.11	-10.14	-2.23
<b>2. OIL (Onshore)</b>	<b>296.164</b>	<b>264.878</b>	<b>285.374</b>	<b>265.949</b>	<b>2364.985</b>	<b>2180.488</b>	<b>2290.459</b>	<b>-7.18</b>	<b>-4.80</b>	<b>-10.56</b>
Assam	295.475	264.369	284.865	265.456	2360.783	2177.154	2285.527	-7.19	-4.74	-10.53
Arunachal Pradesh	0.689	0.509	0.509	0.493	4.202	3.334	4.932	0.00	-32.40	-26.12
<b>3. DGH (Private / JVC)</b>	<b>880.415</b>	<b>936.647</b>	<b>996.122</b>	<b>975.876</b>	<b>7138.388</b>	<b>7702.189</b>	<b>7843.673</b>	<b>-5.97</b>	<b>-1.80</b>	<b>6.39</b>
<b>Onshore</b>	<b>677.995</b>	<b>734.382</b>	<b>773.973</b>	<b>767.171</b>	<b>5513.688</b>	<b>5934.374</b>	<b>6058.195</b>	<b>-5.12</b>	<b>-2.04</b>	<b>8.32</b>
Arunachal Pradesh	5.738	4.144	5.330	4.159	46.667	33.455	49.750	-22.25	-32.75	-27.78
Gujarat	15.928	12.458	11.199	13.180	128.877	99.668	94.523	11.24	5.44	-21.79
Rajasthan	656.329	717.780	757.444	749.832	5338.145	5801.251	5913.922	-5.24	-1.91	9.36
<b>Offshore</b>	<b>202.419</b>	<b>202.265</b>	<b>222.149</b>	<b>208.705</b>	<b>1624.699</b>	<b>1767.815</b>	<b>1785.478</b>	<b>-8.95</b>	<b>-0.99</b>	<b>-0.08</b>
Eastern Offshore	102.720	94.348	113.484	99.309	806.862	895.595	855.604	-16.86	4.67	-8.15
Gujarat Offshore	28.325	34.430	32.627	36.787	230.380	273.551	263.983	5.53	3.62	21.55
Western Offshore	71.374	73.487	76.038	72.609	587.458	598.669	665.891	-3.35	-10.10	2.96
<b>GRAND TOTAL (1+2+3)</b>	<b>3022.837</b>	<b>3039.518</b>	<b>3143.395</b>	<b>3151.178</b>	<b>24533.601</b>	<b>24870.855</b>	<b>24962.862</b>	<b>-3.30</b>	<b>-0.37</b>	<b>0.55</b>
Onshore	1480.686	1478.115	1558.249	1527.071	11906.442	11978.350	12452.032	-5.14	-3.80	-0.17
Offshore	1542.150	1561.403	1585.146	1624.107	12627.158	12892.505	12510.829	-1.50	3.05	1.25

Note: Totals may not tally due to rounding off figures.

^: Includes crude oil production of Tripura

\*: Provisional. \*\*: Revised

Reasons for shortfall are indicated in the note.

## MINISTRY OF PETROLEUM &amp; NATURAL GAS

Review of Natural Gas Production during the month of November, 2015 and cumulatively for the period April-November, 2015 vis-à-vis April-November, 2014

(Qty: Million Cubic Meters)

Name of Undertaking/Unit/State	Planned production during the month	Production during the			Cumulative Production (April - November)			% variation over last year		% variation during the month under review over planned production
		Month under review *	Corresponding month of last year	Preceding month of current year	Planned production during current year	Actual production during current year	Actual production during corresponding period of last year	During the month under review	Upto the end of the period	
(1)	(2)	(3)	(4)	(5)	(6)	(7)	(8)	(9)	(10)	(11)
<b>1. ONGC</b>	<b>1994.823</b>	<b>1776.830</b>	<b>1846.334</b>	<b>1838.436</b>	<b>15724.779</b>	<b>14453.152</b>	<b>14699.308</b>	<b>-3.76</b>	<b>-1.67</b>	<b>-10.93</b>
<b>Onshore</b>	<b>452.525</b>	<b>390.597</b>	<b>381.829</b>	<b>397.449</b>	<b>3514.542</b>	<b>3166.446</b>	<b>3164.970</b>	<b>2.30</b>	<b>0.05</b>	<b>-13.69</b>
Andhra Pradesh	75.155	52.470	30.145	45.709	505.688	389.696	343.241	74.06	13.53	-30.18
Assam	39.674	33.820	36.003	34.005	306.855	268.890	310.441	-6.06	-13.38	-14.76
Gujarat	99.899	111.505	121.483	122.484	816.918	928.413	954.444	-8.21	-2.73	11.62
Rajasthan	1.230	0.704	0.727	0.558	10.000	3.848	3.466	-3.20	11.01	-42.76
Tamil Nadu	105.521	70.142	89.324	83.665	828.580	702.548	825.251	-21.47	-14.87	-33.53
Tripura	131.047	121.957	104.147	111.028	1046.500	873.052	728.127	17.10	19.90	-6.94
<b>Offshore</b>	<b>1542.298</b>	<b>1386.234</b>	<b>1464.505</b>	<b>1440.987</b>	<b>12210.237</b>	<b>11286.705</b>	<b>11534.337</b>	<b>-5.34</b>	<b>-2.15</b>	<b>-10.12</b>
Eastern Offshore	74.006	1.889	22.425	5.687	507.083	135.071	32.208	-91.58	319.37	-97.45
Western Offshore	1468.292	1384.345	1442.080	1435.300	11703.154	11151.635	11502.130	-4.00	-3.05	-5.72
<b>2. OIL</b>	<b>257.450</b>	<b>255.660</b>	<b>233.476</b>	<b>254.334</b>	<b>2011.545</b>	<b>1853.959</b>	<b>1826.229</b>	<b>9.50</b>	<b>1.52</b>	<b>-0.70</b>
Assam	234.810	233.396	214.610	233.003	1849.763	1712.757	1690.074	8.75	1.34	-0.60
Arunachal Pradesh	1.140	0.954	1.000	1.046	9.232	7.479	7.802	-4.60	-4.14	-16.32
Rajasthan	21.500	21.310	17.866	20.285	152.550	133.723	128.353	19.28	4.18	-0.88
<b>3. DGH (Private / JVC)</b>	<b>676.985</b>	<b>683.710</b>	<b>747.091</b>	<b>702.206</b>	<b>5608.836</b>	<b>5652.898</b>	<b>5957.353</b>	<b>-8.48</b>	<b>-5.11</b>	<b>0.99</b>
<b>Onshore</b>	<b>81.905</b>	<b>107.754</b>	<b>100.886</b>	<b>105.725</b>	<b>666.160</b>	<b>814.322</b>	<b>696.169</b>	<b>6.81</b>	<b>16.97</b>	<b>31.56</b>
Arunachal Pradesh	0.909	1.397	1.890	1.626	7.393	12.691	14.274	-26.08	-11.09	53.68
Gujarat	6.061	7.503	8.043	7.432	49.294	61.577	71.179	-6.71	-13.49	23.80
Rajasthan	74.935	98.854	90.953	96.667	609.472	740.054	610.716	8.69	21.18	31.92
<b>CBM</b>	<b>50.656</b>	<b>30.682</b>	<b>18.128</b>	<b>30.719</b>	<b>412.004</b>	<b>257.294</b>	<b>141.139</b>	<b>69.25</b>	<b>82.30</b>	<b>-39.43</b>
Jharkhand (CBM)	0.287	0.134	0.212	0.138	2.337	0.941	1.587	-36.79	-40.71	-53.37
Madhya Pradesh (CBM)	3.570	0.164	0.064	0.061	29.040	1.093	1.744	156.25	-37.33	-95.41
West Bengal (CBM)	46.798	30.384	17.852	30.520	380.627	255.260	137.808	70.20	85.23	-35.07
<b>Offshore</b>	<b>544.424</b>	<b>545.274</b>	<b>628.077</b>	<b>565.762</b>	<b>4530.672</b>	<b>4581.282</b>	<b>5120.045</b>	<b>-13.18</b>	<b>-10.52</b>	<b>0.16</b>
Eastern Offshore	397.654	349.239	413.466	369.636	3226.877	3050.516	3315.171	-15.53	-7.98	-12.18
Gujarat Offshore	3.426	5.422	9.478	5.844	27.867	44.419	85.520	-42.79	-48.06	58.25
Western Offshore	143.344	190.613	205.133	190.282	1275.928	1486.347	1719.354	-7.08	-13.55	32.98
<b>TOTAL (1+2+3)</b>	<b>2929.258</b>	<b>2716.200</b>	<b>2826.901</b>	<b>2794.976</b>	<b>23345.160</b>	<b>21960.009</b>	<b>22482.890</b>	<b>-3.92</b>	<b>-2.33</b>	<b>-7.27</b>
CBM	50.656	30.682	18.128	30.719	412.004	257.294	141.139	69.25	82.30	-39.43
Onshore	791.880	754.011	716.191	757.508	6192.247	5834.728	5687.368	5.28	2.59	-4.78
Offshore	2086.722	1931.508	2092.582	2006.749	16740.909	15867.987	16654.382	-7.70	-4.72	-7.44

Note: Totals may not tally due to rounding off figures.

\*: Provisional.

\*\*: Revised

CBM: Coal Bed Methane production.

Reasons for shortfall are indicated in the note.



## MINISTRY OF PETROLEUM &amp; NATURAL GAS

Review of Refinery Crude Throughput (in terms of crude oil processed) during the month of November, 2015 and cumulatively for the period April-November, 2015 vis-à-vis April-November, 2014

(Qty: '000' Tonnes)

Name of Undertaking/Unit	Planned production during the month	Production during the			Cumulative Production			% variation over last year		% variation during the month under review over planned production
		Month under review *	Corresponding month of last year	Preceding month of current year	(April - November)			During the month under review	Upto the end of the period	
					Planned production during current year	Actual production during current year **	Actual production during corresponding period of last year			
(1)	(2)	(3)	(4)	(5)	(6)	(7)	(8)	(9)	(10)	(11)
<b>A. Public Sector</b>	<b>10361.710</b>	<b>10547.210</b>	<b>10310.414</b>	<b>9890.397</b>	<b>80559.852</b>	<b>81109.442</b>	<b>79248.859</b>	<b>2.30</b>	<b>2.35</b>	<b>1.79</b>
1. IOC, Guwahati	90.000	72.355	90.918	76.726	722.000	666.179	674.460	-20.42	-1.23	-19.61
2. IOC, Barauni	516.370	578.696	404.104	559.226	4200.000	4307.581	4057.461	43.20	6.16	12.07
3. IOC, Gujarat	1176.702	1218.065	1121.735	1264.207	8500.464	8979.365	8907.497	8.59	0.81	3.52
4. IOC, Haldia	660.000	696.871	669.427	534.321	5105.000	5030.024	5126.137	4.10	-1.87	5.59
5. IOC, Mathura	714.000	735.969	686.946	775.503	5644.000	5775.317	5615.421	7.14	2.85	3.08
6. IOC, Digboi	57.000	42.595	55.572	48.387	432.000	373.762	411.569	-23.35	-9.19	-25.27
7. IOC, Panipat	1293.956	1300.586	1279.418	1264.462	9981.044	9983.997	9131.630	1.65	9.33	0.51
8. IOC, Bongaigaon	164.000	154.282	230.386	182.795	1543.600	1639.391	1546.511	-33.03	6.01	-5.93
<b>Total IOC</b>	<b>4672.027</b>	<b>4799.419</b>	<b>4538.506</b>	<b>4705.627</b>	<b>36128.108</b>	<b>36755.616</b>	<b>35470.686</b>	<b>5.75</b>	<b>3.62</b>	<b>2.73</b>
9. BPCL, Mumbai	1080.000	1116.467	1151.194	1126.331	8537.000	8790.824	8300.312	-3.02	5.91	3.38
10. BPCL, Kochi	710.000	907.061	838.139	655.616	6990.000	7055.476	7016.307	8.22	0.56	27.76
<b>Total BPCL</b>	<b>1790.000</b>	<b>2023.528</b>	<b>1989.333</b>	<b>1781.947</b>	<b>15527.000</b>	<b>15846.300</b>	<b>15316.619</b>	<b>1.72</b>	<b>3.46</b>	<b>13.05</b>
11. HPCL, Mumbai	613.114	673.783	624.717	697.588	4606.578	5074.317	4662.773	7.85	8.83	9.90
12. HPCL, Visakh	778.498	807.360	781.129	826.212	5934.076	5895.054	5564.470	3.36	5.94	3.71
<b>Total HPCL</b>	<b>1391.612</b>	<b>1481.143</b>	<b>1405.847</b>	<b>1523.800</b>	<b>10540.654</b>	<b>10969.371</b>	<b>10227.243</b>	<b>5.36</b>	<b>7.26</b>	<b>6.43</b>
13. CPCL, Manali	876.800	700.286	851.751	628.094	6734.600	5934.481	6742.088	-17.78	-11.98	-20.13
14. CPCL, Narimanam(CBR)	41.100	41.141	41.851	40.862	334.240	356.067	365.532	-1.70	-2.59	0.10
<b>Total CPCL</b>	<b>917.900</b>	<b>741.427</b>	<b>893.602</b>	<b>668.956</b>	<b>7068.840</b>	<b>6290.548</b>	<b>7107.620</b>	<b>-17.03</b>	<b>-11.50</b>	<b>-19.23</b>
15. NRL, Numaligarh	235.000	218.684	226.257	232.951	1753.000	1617.966	1926.006	-3.35	-15.99	-6.94
16. MRPL, Mangalore	1350.000	1276.170	1251.629	972.139	9500.000	9591.026	9166.885	1.96	4.63	-5.47
17. ONGC, Tatipaka	5.171	6.839	5.240	4.977	42.250	38.616	33.800	30.51	14.25	32.25
<b>B. Joint Venture Sub Total</b>	<b>1237.705</b>	<b>1409.141</b>	<b>1496.276</b>	<b>1544.650</b>	<b>9200.000</b>	<b>11482.950</b>	<b>8334.337</b>	<b>-5.82</b>	<b>37.78</b>	<b>13.85</b>
18. BORL, Bina	500.000	501.004	595.241	612.912	3200.000	4158.604	4056.193	-15.83	2.52	0.20
19. HMEL, GGSR, Bhatinda	737.705	908.137	901.035	931.738	6000.000	7324.346	4278.144	0.79	71.20	23.10
<b>C. Private Sector</b>	<b>7111.742</b>	<b>7738.766</b>	<b>7402.192</b>	<b>6833.496</b>	<b>58082.703</b>	<b>57971.862</b>	<b>59378.481</b>	<b>4.55</b>	<b>-2.37</b>	<b>8.82</b>
20. RIL, Jamnagar	2703.614	2901.525	2703.614	2815.123	20780.562	21529.342	20780.562	7.32	3.60	7.32
21. RIL, SEZ	3003.995	3143.390	3003.995	3254.736	24986.216	24345.096	24986.216	4.64	-2.57	4.64
<b>Total RIL</b>	<b>5707.609</b>	<b>6044.915</b>	<b>5707.609</b>	<b>6069.859</b>	<b>45766.778</b>	<b>45874.438</b>	<b>45766.778</b>	<b>5.91</b>	<b>0.24</b>	<b>5.91</b>
22. Essar Oil Ltd.(EOL), Vadinar	1404.133	1693.851	1694.583	763.637	12315.926	12097.424	13611.703	-0.04	-11.12	20.63
<b>TOTAL(A+B+C)</b>	<b>18711.157</b>	<b>19695.118</b>	<b>19208.882</b>	<b>18268.543</b>	<b>147842.555</b>	<b>150564.255</b>	<b>146961.677</b>	<b>2.53</b>	<b>2.45</b>	<b>5.26</b>

Note: may November not tally due to rounding off figures.

\*: Provisional. \*\*:Revised

Reasons for shortfall are indicated in the note.

## MINISTRY OF PETROLEUM &amp; NATURAL GAS

Refinery-wise Capacity Utilisation during the month of November, 2015 and cumulatively for the period April-November, 2015 vis-à-vis April-November, 2014

(Qty: '000' Tonnes)

Name of Undertaking/Unit	November, 2015			November, 2014			Cumulative (April - November)					
	Prorated Installed Capacity	Actual Crude T'put *	% Utilisation of I/C	Prorated Installed Capacity	Actual Crude T'put	% Utilisation of I/C	2015-16			2014-15		
							Prorated Installed Capacity	Actual Crude T'put *	% Utilisation of I/C	Prorated Installed Capacity	Actual Crude T'put	% Utilisation of I/C
(1)	(2)	(3)	(4)	(5)	(6)	(7)	(8)	(9)	(10)	(11)	(12)	(13)
<b>A. Public Sector</b>	<b>9841.000</b>	<b>10547.210</b>	<b>107.18</b>	<b>9868.000</b>	<b>10310.414</b>	<b>104.48</b>	<b>80044.000</b>	<b>81109.442</b>	<b>101.33</b>	<b>80263.000</b>	<b>79248.859</b>	<b>98.74</b>
1. IOC, Guwahati	82.000	72.355	88.24	82.000	90.918	110.88	667.000	666.179	99.88	668.000	674.460	100.97
2. IOC, Barauni	492.000	578.696	117.62	493.000	404.104	81.97	4000.000	4307.581	107.69	4011.000	4057.461	101.16
3. IOC, Koyali	1123.000	1218.065	108.47	1126.000	1121.735	99.62	9133.000	8979.365	98.32	9158.000	8907.497	97.26
4. IOC, Haldia	615.000	696.871	113.31	616.000	669.427	108.67	5000.000	5030.024	100.60	5014.000	5126.137	102.24
5. IOC, Mathura	656.000	735.969	112.19	658.000	686.946	104.40	5333.000	5775.317	108.29	5348.000	5615.421	105.00
6. IOC, Digboi	53.000	42.595	80.37	53.000	55.572	104.85	433.000	373.762	86.32	435.000	411.569	94.61
7. IOC, Panipat	1230.000	1300.586	105.74	1233.000	1279.418	103.76	10000.000	9983.997	99.84	10027.000	9131.630	91.07
8. IOC, Bongaigaon	193.000	154.282	79.94	193.000	230.386	119.37	1567.000	1639.391	104.62	1571.000	1546.511	98.44
<b>Total IOC</b>	<b>4443.000</b>	<b>4799.419</b>	<b>108.02</b>	<b>4455.000</b>	<b>4538.506</b>	<b>101.87</b>	<b>36133.000</b>	<b>36755.616</b>	<b>101.72</b>	<b>36232.000</b>	<b>35470.686</b>	<b>97.90</b>
9. BPCL, Mumbai	984.000	1116.467	113.46	986.000	1151.194	116.75	8000.000	8790.824	109.89	8022.000	8300.312	103.47
10. BPCL, Kochi	779.000	907.061	116.44	781.000	838.139	107.32	6333.000	7055.476	111.41	6351.000	7016.307	110.48
<b>Total BPCL</b>	<b>1762.000</b>	<b>2023.528</b>	<b>114.84</b>	<b>1767.000</b>	<b>1989.333</b>	<b>0.00</b>	<b>14333.000</b>	<b>15846.300</b>	<b>110.56</b>	<b>14373.000</b>	<b>15316.619</b>	<b>106.57</b>
12. HPCL, Mumbai	533.000	673.783	126.41	534.000	595.241	111.47	4333.000	5074.317	117.11	4345.000	4662.773	107.31
13. HPCL, Visakh	680.000	807.360	118.73	682.000	781.129	114.54	5533.000	5895.054	106.54	5548.000	5564.470	100.30
<b>Total HPCL</b>	<b>1213.000</b>	<b>1481.143</b>	<b>122.11</b>	<b>1216.000</b>	<b>1405.847</b>	<b>115.61</b>	<b>9867.000</b>	<b>10969.371</b>	<b>111.17</b>	<b>9894.000</b>	<b>10227.243</b>	<b>103.37</b>
14. CPCL, Manali	861.000	700.286	81.33	863.000	851.751	98.70	7000.000	5934.481	84.78	7019.000	6742.088	96.05
15. CPCL, Narimanam	82.000	41.141	50.17	82.000	41.851	51.04	667.000	356.067	53.38	668.000	365.532	54.72
<b>Total CPCL</b>	<b>943.000</b>	<b>741.427</b>	<b>78.62</b>	<b>945.000</b>	<b>893.602</b>	<b>94.56</b>	<b>7667.000</b>	<b>6290.548</b>	<b>82.05</b>	<b>7688.000</b>	<b>7107.620</b>	<b>92.45</b>
16. NRL, Numaligarh	246.000	218.684	88.90	247.000	226.257	91.60	2000.000	1617.966	80.90	2005.000	1926.006	96.06
17. MRPL, Mangalore	1230.000	1276.170	103.75	1233.000	1251.629	101.51	10000.000	9591.026	95.91	10027.000	9166.885	91.42
18. ONGC, Tatipaka	5.000	6.839	136.77	5.000	5.240	104.80	44.000	38.616	87.76	44.000	33.800	76.82
<b>B. Joint Venture Sub Total</b>	<b>1230.000</b>	<b>1409.141</b>	<b>114.56</b>	<b>1233.000</b>	<b>1496.276</b>	<b>121.35</b>	<b>10000.000</b>	<b>11482.950</b>	<b>114.83</b>	<b>10027.000</b>	<b>8334.337</b>	<b>83.12</b>
18. BORL, Bina	492.000	501.004	101.83	493.000	595.241	120.74	4000.000	4158.604	103.97	4011.000	4056.193	101.13
19. HMEL, GGSR, Bhatinda	738.000	908.137	123.05	740.000	901.035	121.76	6000.000	7324.346	122.07	6016.000	4278.144	71.11
<b>C. Private Sector</b>	<b>6557.000</b>	<b>7738.766</b>	<b>118.02</b>	<b>6575.000</b>	<b>7402.192</b>	<b>112.58</b>	<b>53333.000</b>	<b>57971.862</b>	<b>108.70</b>	<b>53479.000</b>	<b>59378.481</b>	<b>111.03</b>
20. RIL, Jamnagar	2705.000	2901.525	107.27	2712.000	2703.614	99.69	22000.000	21529.342	97.86	22060.000	20780.562	94.20
21. RIL, SEZ	2213.000	3143.390	142.04	2219.000	3003.995	135.38	18000.000	24345.096	135.25	18049.000	24986.216	138.44
<b>Total RIL</b>	<b>4918.000</b>	<b>6044.915</b>	<b>122.91</b>	<b>4932.000</b>	<b>5707.609</b>	<b>115.73</b>	<b>40000.000</b>	<b>45874.438</b>	<b>114.69</b>	<b>40110.000</b>	<b>45766.778</b>	<b>114.10</b>
22. Essar Oil Ltd.(EOL), Vadinar	1639.000	1693.851	103.35	1644.000	1694.583	103.08	13333.000	12097.424	90.73	13370.000	13611.703	101.81
<b>TOTAL</b>	<b>17628.000</b>	<b>19695.118</b>	<b>111.73</b>	<b>17677.000</b>	<b>19208.882</b>	<b>108.67</b>	<b>143377.000</b>	<b>150564.255</b>	<b>105.01</b>	<b>143770.000</b>	<b>146961.677</b>	<b>102.22</b>

\*: Provisional.

I/C: Installed Capacity.

## MINISTRY OF PETROLEUM &amp; NATURAL GAS

Review of Production of Petroleum Products during the month of November, 2015 and cumulatively for the period April-November, 2015 vis-à-vis April-November, 2014

(Qty: '000' Tonnes)

Name of Undertaking/Unit	Planned production during the month	Production during the			Cumulative Production			% variation over last year		% variation during the month under review over planned production
		Month under review *	Corresponding month of last year	Preceding month of current year **	(April - November)			During the month under review	Upto the end of the period	
					Planned production during current year	Actual production during current year	Actual production during corresponding period of last year			
(1)	(2)	(3)	(4)	(5)	(6)	(7)	(8)	(9)	(10)	(11)
<b>I. Production of Petroleum Products by Refinery</b>										
<b>A. Public Sector</b>	<b>9631.533</b>	<b>10129.431</b>	<b>9772.123</b>	<b>9356.246</b>	<b>74996.694</b>	<b>76726.437</b>	<b>74784.776</b>	<b>3.66</b>	<b>2.60</b>	<b>5.17</b>
1. IOC, Guwahati	80.426	95.411	103.140	98.283	638.358	813.719	675.696	-7.49	20.43	18.63
2. IOC, Barauni	469.222	537.717	354.092	516.763	3841.382	3979.800	3716.213	51.86	7.09	14.60
3. IOC, Koyali, Gujarat	1111.997	1164.773	1058.509	1213.059	7979.102	8583.894	8366.564	10.04	2.60	4.75
4. IOC, Haldia	604.200	649.749	620.210	441.656	4626.091	4594.614	4719.175	4.76	-2.64	7.54
5. IOC, Mathura	693.509	732.367	664.152	735.097	5490.608	5597.279	5467.840	10.27	2.37	5.60
6. IOC, Digboi	56.482	39.774	54.668	52.973	420.534	364.936	411.972	-27.24	-11.42	-29.58
7. IOC, Panipat	1239.360	1320.834	1343.073	1313.693	9461.693	10054.644	9171.937	-1.66	9.62	6.57
8. IOC, Bongaigaon	134.600	115.355	205.573	146.978	1365.560	1441.307	1384.821	-43.89	4.08	-14.30
<b>Total IOC</b>	<b>4389.796</b>	<b>4655.980</b>	<b>4403.417</b>	<b>4518.502</b>	<b>33823.327</b>	<b>35430.193</b>	<b>33914.218</b>	<b>5.74</b>	<b>4.47</b>	<b>6.06</b>
9. BPCL, Mumbai	1030.500	1060.551	1133.580	1079.640	8159.810	8408.647	7973.724	-6.44	5.45	2.92
10. BPCL, Kochi	632.500	880.416	787.871	623.179	6494.800	6683.994	6583.039	11.75	1.53	39.20
<b>Total BPCL</b>	<b>1663.000</b>	<b>1940.967</b>	<b>1921.451</b>	<b>1702.819</b>	<b>14654.610</b>	<b>15092.641</b>	<b>14556.762</b>	<b>1.02</b>	<b>3.68</b>	<b>16.71</b>
11. HPCL, Mumbai	574.402	671.843	551.389	674.871	4320.007	4728.337	4402.545	21.85	7.40	16.96
12. HPCL, Visakh	717.677	755.037	750.784	780.459	5467.233	5402.542	5239.538	0.57	3.11	5.21
<b>Total HPCL</b>	<b>1292.079</b>	<b>1426.880</b>	<b>1302.173</b>	<b>1455.330</b>	<b>9787.240</b>	<b>10130.878</b>	<b>9642.083</b>	<b>9.58</b>	<b>5.07</b>	<b>10.43</b>
13. CPCL, Manali	798.344	630.325	757.638	565.343	6113.448	5403.873	6195.967	-16.80	-12.78	-21.05
14. CPCL, Narimanam(CBR)	41.798	41.796	42.380	41.614	339.913	361.799	370.607	-1.38	-2.38	0.00
<b>Total CPCL</b>	<b>840.141</b>	<b>672.121</b>	<b>800.018</b>	<b>606.957</b>	<b>6453.361</b>	<b>5765.672</b>	<b>6566.574</b>	<b>-15.99</b>	<b>-12.20</b>	<b>-20.00</b>
15. NRL, Numaligarh	227.770	217.270	223.512	233.677	1696.103	1593.470	1897.033	-2.79	-16.00	-4.61
16. MRPL, Mangalore	1213.650	1209.479	1116.394	834.059	8540.415	8675.713	8174.794	8.34	6.13	-0.34
17. ONGC, Tatipaka	5.096	6.734	5.158	4.903	41.638	37.870	33.311	30.56	13.69	32.14
<b>B. Joint Venture Sub Total</b>	<b>1153.292</b>	<b>1296.848</b>	<b>1435.777</b>	<b>1434.786</b>	<b>8588.596</b>	<b>10717.700</b>	<b>7806.366</b>	<b>-9.68</b>	<b>37.29</b>	<b>12.45</b>
18. BORL Bina	457.500	445.803	565.985	556.552	2928.000	3772.464	3761.919	-21.23	0.28	-2.56
19. HMEL, GGSR, Bhatinda	695.792	851.045	869.792	878.234	5660.596	6945.236	4044.447	-2.16	71.72	22.31
<b>C. Private Sector</b>	<b>7041.486</b>	<b>8052.695</b>	<b>7336.899</b>	<b>7308.348</b>	<b>59296.928</b>	<b>60206.801</b>	<b>60576.334</b>	<b>9.76</b>	<b>-0.61</b>	<b>14.36</b>
1. RIL, Jamnagar	2550.225	2760.106	2550.225	3044.087	20827.891	21583.560	20828.216	8.23	3.63	8.23
2. RIL (SEZ)	3130.165	3569.437	3130.165	3639.231	26542.171	27028.932	26542.171	14.03	1.83	14.03
<b>Total RIL</b>	<b>5680.390</b>	<b>6329.543</b>	<b>5680.390</b>	<b>6683.318</b>	<b>47370.062</b>	<b>48612.493</b>	<b>47370.387</b>	<b>11.43</b>	<b>2.62</b>	<b>11.43</b>
3. Essar Oil Ltd.(EOL),Vadinar	1361.096	1723.152	1656.509	625.030	11926.866	11594.308	13205.947	4.02	-12.20	26.60
<b>Total Refinery (A+B+C)</b>	<b>17826.311</b>	<b>19478.973</b>	<b>18544.799</b>	<b>18099.380</b>	<b>142882.218</b>	<b>147650.938</b>	<b>143167.476</b>	<b>5.04</b>	<b>3.13</b>	<b>9.27</b>
<b>II. Production of Petroleum Products by Fractionators</b>										
ONGC	283.494	281.780	228.577	277.083	2132.024	1883.631	1821.564	23.28	3.41	-0.60
OIL	3.900	3.432	4.185	3.867	28.200	26.616	27.737	-17.99	-4.04	-12.00
GAIL	96.230	99.181	110.730	98.610	782.667	732.251	873.343	-10.43	-16.16	3.07
<b>D. Total Fractionators</b>	<b>383.624</b>	<b>384.393</b>	<b>343.492</b>	<b>379.560</b>	<b>2942.891</b>	<b>2642.498</b>	<b>2722.644</b>	<b>11.91</b>	<b>-2.94</b>	<b>0.20</b>
<b>Grand Total (A+B+C+D)</b>	<b>18209.934</b>	<b>19863.366</b>	<b>18888.291</b>	<b>18478.940</b>	<b>145825.109</b>	<b>150293.436</b>	<b>145890.120</b>	<b>5.16</b>	<b>3.02</b>	<b>9.08</b>

Note: Totals may not tally due to rounding off figures.

\*: Provisional.

\*\*: Revised