

Government of India
Ministry of Petroleum and Natural Gas
Economics & Statistics Division

New Delhi
Dated the 21st July, 2016

Monthly Production Report
June 2016

Crude Oil

1. Crude oil production¹ during June 2016 was 2966.54 TMT which is 0.08% higher than target but 4.34 % lower than the production achieved in June 2015. Cumulative crude oil production during April-June, 2016 was 9000.94 TMT which is 0.30% higher than target for the period and 3.33% lower than the production during corresponding period of last year. Unit-wise and state-wise crude oil production is given at Annexure-I. Unit-wise crude oil production for the month of June, 2016 and cumulatively for the period April-June, 2016 vis-à-vis same period of last year has been shown in Table-1 and month-wise in Figure-1.

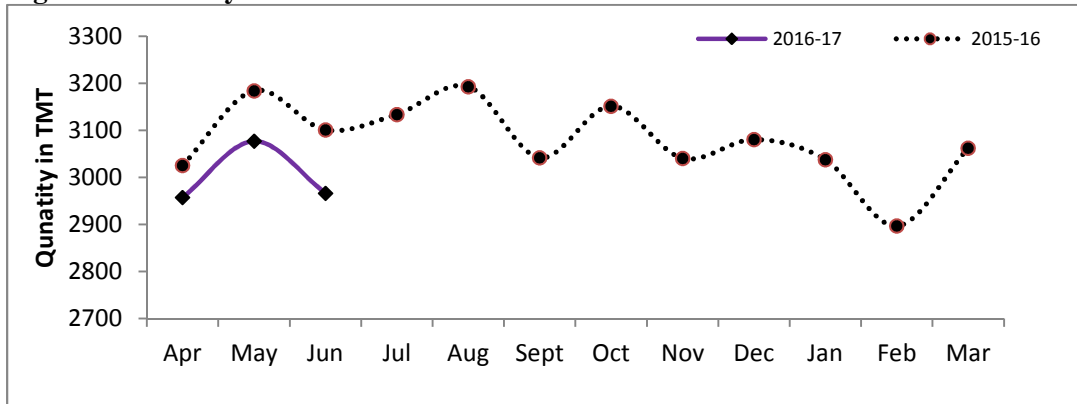
Table-1: Crude Oil Production (in TMT)

Oil Company	Target	June (Month)				April-June (Cumulative)			
	2016-17* (Apr-Mar)	2016-17*		2015-16	% over last year	2016-17*		2015-16	% over last year
		Target	Prod.	Prod.		Target	Prod.	Prod.	
ONGC	22393.40	1798.35	1802.99	1853.95	97.25	5452.85	5492.07	5574.44	98.52
OIL	3280.10	263.10	265.37	271.28	97.82	790.90	798.18	836.98	95.36
PSC Fields	10839.32	902.58	898.19	975.89	92.04	2730.36	2710.69	2899.61	93.48
Total	36512.83	2964.03	2966.54	3101.12	95.66	8974.11	9000.94	9311.03	96.67

*: Provisional

¹ Including condensate

Figure-1: Monthly Crude Oil Production



Unit-wise production details with reasons for shortfall have been given in following sub-sections:

1.1 Crude oil production by ONGC during June, 2016 was 1802.99 TMT which is 0.26% higher than the monthly target but 2.75% less when compared with June 2015. Cumulative crude oil production during April-June, 2016 was 5492.07 TMT which is 0.72% higher than target for the period and 1.48% lower than the production during corresponding period of last year. Reasons for shortfall in production in some fields are as under:

- Gujarat: Closure of wells in Gandhar / North Gandhar fields due to repairs/ plant shutdown by M/s. GAIL. Ceasure of wells in Padra field. Increase in water cut in Anklav & Akholjuni fields.
- Assam: Power shutdown & less gas injection pressure
- Rajahmundry: Closure of 24 wells due to repair / replacement of Kadali-Tatipaka & Endamuru-Oduru GAIL pipelines.

1.2 Crude oil production by OIL during June, 2016 was 265.37 TMT which is 0.86% higher than monthly target but 2.18% less than June 2015. Cumulative crude oil production during April-June, 2016 was 798.18 TMT which is 0.92% higher than target for the period but 4.64% lower than the production during corresponding period of last year. Reasons for shortfall in production are as under:

- Rise in water cut in wells of Greater Hapjan, Bhogpara & Greater Chandmari fields and Environmental loss.

1.3 Crude oil production by Pvt. /JVs during June 2016 was 898.19 TMT which is 0.49% lower than the monthly target and 7.96% less then compared with June, 2015. Cumulative crude oil production during April-June, 2016 was 2710.69 TMT which is

0.72% lower than target for the period and 6.52% lower than the production during corresponding period of last year. Reasons for shortfall in production are as under:

- Natural Decline in Ravva, Mangala, Panna-Mukta & Underperformance of Bhagyam wells in RJ-ON-90/1
- Under performance of wells of KG D6 due to sand ingress and water loading.
- Production from M&S TAPTI stopped in March, 2016.
- Underperformance of KG- OSN-2001/3

Natural Gas

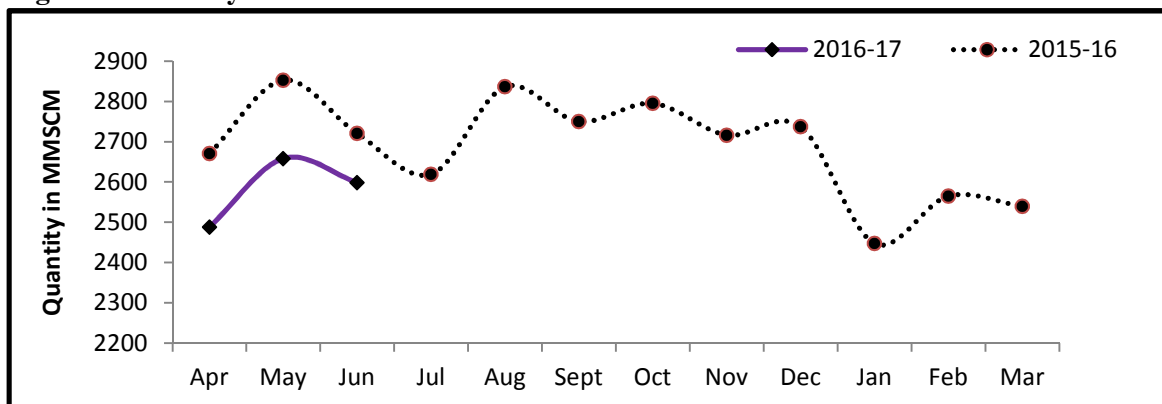
2. Natural gas production during June 2016 was 2598.41 MMSCM which is 3.46% lower than the target for the month and 4.48% lower than the production during corresponding period of last year. Cumulative natural gas production during April-June, 2016 was 7744.66 MMSCM which is 2.49% lower than target for the period and 6.05% lower than the production during corresponding period of last year. Unit-wise and state-wise natural gas production is given at Annexure-II. Unit-wise natural gas production for the month of June, 2016 and cumulatively for the period April-June, 2016 vis-à-vis same period of last year has been shown in Table-2 and month-wise in Figure-2.

Table-2: Natural Gas Production (MMSCM)

Oil Company	Target	June (Month)				April-June (Cumulative)			
	2016-17* (Apr-Mar)	2016-17*		2015-16	% over last year	2016-17*		2015-16	% over last year
		Target	Prod.	Prod.		Target	Prod.	Prod.	
ONGC	22743.43	1793.76	1748.61	1800.99	97.09	5231.05	5172.41	5481.87	94.35
OIL	2905.55	232.61	241.25	225.04	107.20	716.65	730.71	641.64	113.88
PSC Fields	8425.44	665.28	608.55	694.37	87.64	1995.06	1841.54	2119.84	86.87
Total	34074.42	2691.64	2598.41	2720.40	95.52	7942.76	7744.66	8243.34	93.95

*: Provisional

Figure-2: Monthly Natural Gas Production



2.1 Natural gas production by ONGC during June, 2016 was 1748.61 MMSCM which is 2.52% lower than the monthly target and 2.91% less when compared with June 2015. Cumulative natural gas production during April-June, 2016 was 5172.41 MMSCM which is 1.12% lower than the cumulative target and 5.65% lower than the production during the corresponding period of last year. Reasons for shortfall in production are as under:

- Offshore: Natural decline from Bassein field and restricted withdrawal of gas by GAIL in EOA
- Gujarat: Closure of wells in Gandhar / North Gandhar fields due to repairs/ plant shutdown by M/s. GAIL.
- Karaikal: Less off-take by GAIL consumers

2.2 Natural gas production by OIL during June, 2016 was 241.25 MMSCM which is 3.72% higher than the monthly target and 7.20% higher than June 2015. Cumulative natural gas production during April-June, 2016 was 730.71 MMSCM which is 1.96% higher than the cumulative target and 13.88% higher than the production during the corresponding period of last year.

2.3 Natural gas production by Pvt. /JVs during June 2016 was 608.55 MMSCM which is 8.53% lower than the monthly target and 12.36% less when compared with June, 2015. Cumulative natural gas production during April-June, 2016 was 1841.54 MMSCM which is 7.70% lower than the cumulative target and 13.13% lower than the production during the corresponding period of last year. Reasons for shortfall in production are as under:

- Underperformance of wells of KG-OSN-2001/3.
- M&S Tapti: Production stopped in March 2016.
- Closure of one well in KG D6.
- Water loading and sand ingress in Kharsang wells.
- Underperformance of Bhagyam field of RJ-ON-90/1 & Natural Decline of Mangala wells
- Underperformance of Raniganj East, Sohagpur West & Raniganj South CBM Blocks

Refinery Production (in terms of Crude oil processed)

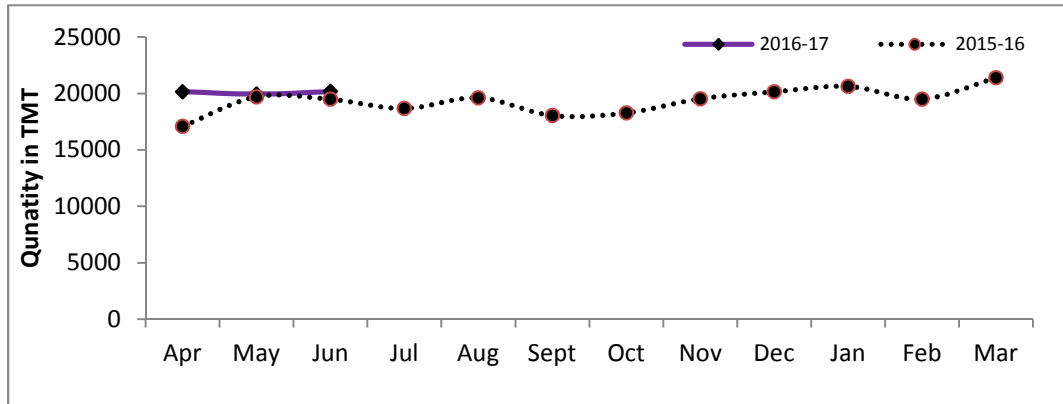
3 Refinery production during June, 2016 was 20167.44 TMT which is 1.10% higher than the target for the month and 3.51% higher than the production during corresponding period of last year. Cumulative production during April-June, 2016 was 60273.18 TMT which is 0.88% higher than the target for the period and 7.10% higher than the production during corresponding period of last year. Unit-wise production is given at Annexure-III. Unit-wise production for the month of June, 2016 and cumulatively for the period April-June, 2016 vis-à-vis same period of last year has been shown in Table-3 and month-wise in Figure-3.

Table 3: Refinery Production (TMT)

Oil Company	Target	June (Month)				April-June (Cumulative)			
	2016-17* (Apr-Mar)	2016-17*		2015-16	% over last year	2016-17*		2015-16	% over last year
		Target	Actual	Actual		Target	Actual	Actual	
IOCL	64299.99	5545.23	5183.04	4674.73	110.87	16493.87	16097.65	13568.07	118.64
BPCL	24999.95	2045.46	2059.72	1959.34	105.12	6179.86	6202.41	6081.57	101.99
HPCL	16500.42	1251.44	1422.76	1241.24	114.62	4129.60	4479.04	3757.82	119.19
CPCL	10250.20	907.30	915.08	953.71	95.95	2751.60	2642.64	2843.37	92.94
NRL	2669.99	224.17	232.81	260.82	89.26	679.70	687.68	413.07	166.48
MRPL	15300.00	1250.00	1273.82	1463.31	87.05	3895.00	3672.17	3910.82	93.90
ONGC	44.59	1.22	7.76	5.50	141.15	9.04	20.96	13.71	152.97
BORL	6000.00	525.00	532.28	601.08	88.55	1575.00	1682.37	1173.73	143.34
HMEL	9000.00	770.34	878.32	897.02	97.91	2336.70	2743.67	2718.04	100.94
RIL	69561.01	5737.18	5941.75	5737.18	103.57	16625.42	16827.06	16625.42	101.21
EOL	20291.64	1690.99	1720.10	1689.79	101.79	5072.97	5217.51	5171.83	100.88
TOTAL	238917.79	19948.32	20167.44	19483.70	103.51	59748.74	60273.18	56277.43	107.10

*: Provisional

Figure 3: Monthly Refinery Production



3.1 PSU Refineries’ production during June, 2016 was 11094.99 TMT which is 1.16% lower than the target for the month and 5.08% higher than the production achieved in the corresponding month of last year. Cumulative production during April-June, 2016 was 33802.56 TMT which is 0.98% lower than the target for the period and 10.51% higher than the production during corresponding period of last year. Reasons for shortfall of refinery production of PSU refineries are as under:

- IOCL, Paradip: Throughput is lower as South oil jetty is under commissioning and Continuous Catalytic Reforming Unit under shut-down for maintenance.
- IOCL, Guwahati & Digboi: Lower crude availability.
- HPCL, Mumbai: Crude throughput lower due to delay in crude parcel receipt.
- CPCL, Manali: Crude throughput lower than target to contain VTGO (Hydrocracker was shut down for catalyst scooping activity in Reactor -1 for 7 days).

- CPCL, CBR: Crude throughput lower than target due to planned shutdown of CBR from 27.5.16 to 12.6.16.
- 3.2 Production in JV refineries during June, 2016 was 1410.60 TMT which is 8.90% higher than the target for the month and 5.84% lower than the production achieved in the corresponding month of last year. Cumulative production during April-June, 2016 was 4426.05 TMT which is 13.15% higher than the target for the period and 13.73% higher than the production during corresponding period of last year.
- 3.3 Production in private refineries during June, 2016 was 7661.85 TMT which is 3.15% higher than the target for the month and 3.16% higher than the production achieved in the corresponding month of last year. Cumulative production during April-June, 2016 was 22044.58 TMT which is 1.60% higher than the target for the period and 1.13% higher than the production during corresponding period of last year.
- 3.4 Refinery-wise details of the capacity utilization and production of petroleum products during the month of June, 2016 and cumulatively for the period April-June, 2016 vis-à-vis April, -June, 2015 are given at Annexures-IV and V respectively.

Annexure-I

(Para 1)

MINISTRY OF PETROLEUM & NATURAL GAS

Crude Oil Production during the month of June, 2016 and cumulatively for the period April-June, 2016 vis-à-vis April-June, 2015

(Qty: '000' Tonnes)

Name of Undertaking/Unit/State	Planned production during the month	Production during the			Cumulative Production			% variation over last year		% variation during the month under review over planned production
		Month under review *	Corresponding month of last year **	Preceding month of current year **	(April-June)			During the month under review	Upto the end of the period	
					Planned production during current year	Actual production during current year *	Actual production during corresponding period of last year **			
(1)	(2)	(3)	(4)	(5)	(5)	(6)	(7)	(8)	(9)	(10)
1. ONGC	1798.346	1802.987	1853.948	1887.130	5452.853	5492.068	5574.438	-2.75	-1.48	0.26
Onshore	473.334	476.434	472.677	495.442	1436.056	1450.502	1443.981	0.79	0.45	0.65
Andhra Pradesh	22.022	20.561	25.748	21.799	65.792	63.241	74.555	-20.15	-15.18	-6.63
Assam ^	77.503	76.205	79.858	78.415	233.648	231.893	242.294	-4.57	-4.29	-1.67
Gujarat	355.365	360.548	345.821	375.746	1080.449	1097.054	1060.580	4.26	3.44	1.46
Tamil Nadu	18.444	19.120	21.250	19.482	56.167	58.314	66.552	-10.02	-12.38	3.67
Offshore	1325.012	1326.553	1381.271	1391.688	4016.797	4041.566	4130.457	-3.96	-2.15	0.12
Eastern Offshore	1.447	1.163	1.773	1.109	4.477	3.893	5.641	-34.40	-30.99	-19.63
Western Offshore	1211.677	1216.376	1268.093	1263.100	3679.332	3705.158	3779.349	-4.08	-1.96	0.39
Condensates	111.888	109.014	111.405	127.479	332.988	332.515	345.467	-2.15	-3.75	-2.57
2. OIL (Onshore)	263.100	265.367	271.279	271.404	790.900	798.178	836.980	-2.18	-4.64	0.86
Assam	262.500	264.736	270.867	270.740	789.100	796.239	835.730	-2.26	-4.73	0.85
Arunachal Pradesh	0.600	0.631	0.412	0.664	1.800	1.939	1.250	53.16	55.12	5.17
3. DGH (Private / JVC)	902.583	898.186	975.888	918.605	2730.361	2710.691	2899.609	-7.96	-6.52	-0.49
Onshore	713.434	708.167	746.510	726.934	2161.978	2144.659	2232.785	-5.14	-3.95	-0.74
Arunachal Pradesh	4.158	3.918	4.113	3.975	11.955	11.806	12.588	-4.74	-6.21	-5.77
Gujarat	12.849	11.556	11.592	11.484	39.082	34.691	35.320	-0.31	-1.78	-10.07
Rajasthan	693.595	691.050	730.805	710.215	2103.896	2094.066	2184.877	-5.44	-4.16	-0.37
Tamil Nadu	2.832	1.643	0.000	1.260	7.045	4.096	0.000	-	-	-
Offshore	189.150	190.019	229.378	191.671	568.383	566.032	666.824	-17.16	-15.12	0.46
Eastern Offshore	82.846	80.957	119.681	84.830	251.784	247.023	370.731	-32.36	-33.37	-2.28
Gujarat Offshore	31.674	33.071	31.109	34.425	100.259	101.125	90.053	6.31	12.29	4.41
Western Offshore	74.630	75.991	78.588	72.416	216.340	217.884	206.040	-3.30	5.75	1.82
GRAND TOTAL (1+2+3)	2964.029	2966.540	3101.115	3077.139	8974.114	9000.937	9311.027	-4.34	-3.33	0.08
Onshore	1449.868	1449.968	1490.466	1493.780	4388.934	4393.339	4513.746	-2.72	-2.67	0.01
Offshore	1514.162	1516.572	1610.649	1583.359	4585.180	4607.598	4797.281	-5.84	-3.95	0.16

Note: Totals may not tally due to rounding off figures.

^: Includes crude oil production of Tripura

*: Provisional. **: Revised

Reasons for shortfall are indicated in the note.

MINISTRY OF PETROLEUM & NATURAL GAS

Natural Gas Production during the month of June, 2016 and cumulatively for the period April-June, 2016 vis-à-vis April-June, 2015

(Qty: Million Cubic Meters)

Name of Undertaking/Unit/State	Planned production during the month	Production during the			Cumulative Production (April-June)			% variation over last year		% variation during the month under review over planned production
		Month under review *	Corresponding month of last year **	Preceding month of current year **	Planned production during current year	Actual production during current year *	Actual production during corresponding period of last year **	During the month under review	Upto the end of the period	
(1)	(2)	(3)	(4)	(5)	(5)	(6)	(7)	(8)	(9)	(10)
1. ONGC	1793.758	1748.608	1800.985	1792.888	5231.045	5172.412	5481.865	-2.91	-5.65	-2.52
Onshore	421.942	396.869	382.829	397.983	1279.544	1187.548	1178.160	3.67	0.80	-5.94
Andhra Pradesh	53.978	68.318	48.760	57.670	165.042	181.017	154.378	40.11	17.26	26.57
Assam	34.347	37.336	31.718	35.702	103.148	108.528	99.985	17.71	8.54	8.70
Gujarat	121.038	99.611	110.640	105.408	369.453	322.932	349.007	-9.97	-7.47	-17.70
Rajasthan	0.411	0.530	0.377	0.223	1.247	1.015	1.776	40.58	-42.84	28.97
Tamil Nadu	93.348	74.423	94.786	77.905	283.046	236.539	280.447	-21.48	-15.66	-20.27
Tripura	118.820	116.651	96.548	121.075	357.608	337.517	292.567	20.82	15.36	-1.83
Offshore	1371.816	1351.739	1418.156	1394.905	3951.501	3984.864	4303.706	-4.68	-7.41	-1.46
Eastern Offshore	51.269	29.155	21.047	8.542	75.590	41.414	64.323	38.52	-35.62	-43.13
Western Offshore	1320.547	1322.584	1397.109	1386.363	3875.911	3943.450	4239.383	-5.33	-6.98	0.15
2. OIL	232.605	241.247	225.044	239.114	716.646	730.712	641.642	7.20	13.88	3.72
Assam	222.382	219.779	207.272	217.019	667.918	664.908	598.049	6.03	11.18	-1.17
Arunachal Pradesh	1.210	0.984	1.045	1.029	3.662	2.977	3.144	-5.84	-5.31	-18.68
Rajasthan	9.013	20.484	16.727	21.066	45.066	62.827	40.449	22.46	55.32	127.27
3. DGH (Private / JVC)	665.279	608.554	694.371	626.210	1995.065	1841.536	2119.835	-12.36	-13.13	-8.53
Onshore	99.012	100.300	91.625	108.663	298.706	315.316	278.843	9.47	13.08	1.30
Assam	0.000	0.000	0.000	0.000	0.000	0.000	0.000	0.00	0.00	0.00
Arunachal Pradesh	0.703	1.215	1.702	1.351	2.021	3.632	5.041	-28.61	-27.95	72.83
Gujarat	7.041	7.733	7.861	8.394	21.312	23.996	23.713	-1.63	1.19	9.82
Rajasthan	90.953	91.189	82.062	98.798	274.597	287.287	250.089	11.12	14.87	0.26
Tamil Nadu	0.315	0.163	0.000	0.120	0.776	0.401	0.000	-	-	-
CBM	62.301	43.669	32.107	42.646	171.379	123.554	94.242	36.01	31.10	-29.91
Jharkhand (CBM)	0.266	0.197	0.167	0.212	0.808	0.604	0.496	17.96	21.77	-26.01
Madhya Pradesh (CBM)	9.350	0.422	0.077	0.513	19.560	1.151	0.264	448.05	335.98	-95.49
West Bengal (CBM)	52.685	43.050	31.863	41.921	151.011	121.799	93.482	35.11	30.29	-18.29
Offshore	503.966	464.585	570.639	474.901	1524.981	1402.666	1746.750	-18.59	-19.70	-7.81
Eastern Offshore	349.608	281.998	377.620	301.777	1088.170	876.943	1169.418	-25.32	-25.01	-19.34
Gujarat Offshore	3.218	6.884	6.195	6.712	9.761	19.916	14.019	11.12	42.06	113.93
Western Offshore	151.140	175.703	186.824	166.412	427.050	505.807	563.313	-5.95	-10.21	16.25
TOTAL (1+2+3)	2691.642	2598.409	2720.400	2658.212	7942.756	7744.660	8243.343	-4.48	-6.05	-3.46
CBM	62.301	43.669	32.107	42.646	171.379	123.554	94.242	36.01	31.10	-29.91
Onshore	753.560	738.416	699.498	745.760	2294.896	2233.576	2098.645	5.56	6.43	-2.01
Offshore	1875.781	1816.324	1988.795	1869.806	5476.481	5387.530	6050.456	-8.67	-10.96	-3.17

Note: Totals may not tally due to rounding off figures.

*: Provisional. **: Revised

CBM: Coal Bed Methane production.

Reasons for shortfall are indicated in the note.

MINISTRY OF PETROLEUM & NATURAL GAS

Refinery Production (in terms of crude oil processed) during the month of June, 2016 and cumulatively for the period April-June, 2016 vis-à-vis April-June, 2015

(Qty: '000' Tonnes)

Name of Undertaking/Unit	Planned production during the month	Production during the			Cumulative Production			% variation over last year		% variation during the month under review over planned production
		Month under review *	Corresponding month of last year	Preceding month of current year **	(April-June)			During the month under review	Upto the end of the period	
					Planned production during current year	Actual production during current year *	Actual production during corresponding period of last year **			
(1)	(2)	(3)	(4)	(5)	(5)	(6)	(7)	(8)	(9)	(10)
A. Public Sector	11224.808	11094.992	10558.629	11570.984	34138.655	33802.558	30588.411	5.08	10.51	-1.16
1. IOC, Guwahati	78.000	67.746	93.288	72.838	237.000	216.008	282.067	-27.38	-23.42	-13.15
2. IOC, Barauni	533.149	547.059	541.215	576.665	1617.218	1682.988	1542.776	1.08	9.09	2.61
3. IOC, Gujarat	1185.019	1233.471	1176.205	1240.312	3584.519	3688.745	2984.377	4.87	23.60	4.09
4. IOC, Haldia	675.000	681.656	667.002	713.191	2035.000	2087.176	1976.822	2.20	5.58	0.99
5. IOC, Mathura	720.000	796.809	732.791	813.746	2206.314	2408.038	2107.316	8.74	14.27	10.67
6. IOC, Digboi	55.000	43.155	51.361	45.866	166.000	140.776	135.720	-15.98	3.73	-21.54
7. IOC, Panipat	1300.000	1356.587	1212.379	1386.002	3944.000	4058.595	3871.890	11.89	4.82	4.35
8. IOC, Bongaigaon	199.060	199.569	200.486	214.646	603.816	625.797	667.097	-0.46	-6.19	0.26
9. IOC, Paradip	800.000	256.992	0.000	538.270	2100.000	1189.530	0.000	-	-	-67.88
Total IOC	5545.228	5183.044	4674.727	5601.536	16493.866	16097.653	13568.065	10.87	18.64	-6.53
10. BPCL, Mumbai	1145.457	1163.181	1056.418	1169.347	3479.869	3478.051	3356.624	10.11	3.62	1.55
11. BPCL, Kochi	900.000	896.535	902.920	932.506	2699.988	2724.357	2724.945	-0.71	-0.02	-0.38
Total BPCL	2045.456	2059.716	1959.338	2101.853	6179.856	6202.408	6081.569	5.12	1.99	0.70
12. HPCL, Mumbai	633.900	624.957	652.845	723.548	1922.830	2062.412	1623.206	-4.27	27.06	-1.41
13. HPCL, Visakh	617.542	797.805	588.392	815.045	2206.766	2416.630	2134.609	35.59	13.21	29.19
Total HPCL	1251.442	1422.762	1241.237	1538.593	4129.596	4479.042	3757.815	14.62	19.19	13.69
14. CPCL, Manali	858.000	881.596	905.605	802.206	2602.000	2503.851	2712.872	-2.65	-7.70	2.75
15. CPCL, CBR	49.300	33.487	48.103	49.610	149.600	138.788	130.497	-30.38	6.35	-32.08
Total CPCL	907.300	915.083	953.708	851.816	2751.600	2642.639	2843.369	-4.05	-7.06	0.86
16. NRL, Numaligarh	224.166	232.812	260.817	238.340	679.698	687.682	413.071	-10.74	66.48	3.86
17. MRPL, Mangalore	1250.000	1273.815	1463.305	1232.446	3895.000	3672.170	3910.816	-12.95	-6.10	1.91
18. ONGC, Tatipaka	1.216	7.759	5.497	6.400	9.039	20.965	13.706	41.15	52.97	538.11
B. Joint Venture Sector	1295.339	1410.598	1498.104	1561.685	3911.695	4426.048	3891.776	-5.84	13.73	8.90
19. BORL, Bina	525.000	532.283	601.084	616.515	1575.000	1682.374	1173.733	-11.45	43.34	1.39
20. HMEL, GGSR, Bhatinda	770.339	878.315	897.020	945.170	2336.695	2743.674	2718.043	-2.09	0.94	14.02
C. Private Sector	7428.169	7661.853	7426.965	6817.399	21698.391	22044.576	21797.245	3.16	1.13	3.15
21. RIL, Jamnagar	2713.896	2726.505	2713.896	2856.327	7477.962	8314.782	7477.962	0.46	11.19	0.46
22. RIL, SEZ	3023.283	3215.248	3023.283	2182.508	9147.458	8512.282	9147.458	6.35	-6.94	6.35
Total RIL	5737.179	5941.753	5737.179	5038.835	16625.420	16827.064	16625.420	3.57	1.21	3.57
23. EOL, Vadinar	1690.990	1720.100	1689.786	1778.564	5072.971	5217.512	5171.825	1.79	0.88	1.72
TOTAL(A+B+C)	19948.316	20167.443	19483.698	19950.068	59748.741	60273.182	56277.432	3.51	7.10	1.10

Note: Totals may not tally due to rounding off figures. *: Provisional. **: Revised

Reasons for shortfall are indicated in the note.

MINISTRY OF PETROLEUM & NATURAL GAS

(Para 3.4)

Refinery-wise Capacity Utilisation during the month of June, 2016 and cumulatively for the period April-June, 2016 vis-à-vis April-June, 2015

(Qty: '000' Tonnes)

Name of Undertaking/Unit	June, 2016			June, 2015			Cumulative (April - June)					
	Prorated Installed Capacity	Actual Crude T'put *	% Utilisation of Installed Capacity	Prorated Installed Capacity	Actual Crude T'put	% Utilisation of Installed Capacity	2016-17			2015-16		
							Prorated Installed Capacity	Actual Crude T'put *	% Utilisation of Installed Capacity	Prorated Installed Capacity	Actual Crude T'put **	% Utilisation of Installed Capacity
(1)	(2)	(3)	(4)	(5)	(6)	(7)	(8)	(9)	(10)	(11)	(12)	(13)
A. Public Sector	11101.00	11094.99	99.95	9841.00	10558.63	107.29	33674.00	33802.56	100.38	29852.00	30588.41	102.47
1. IOC, Guwahati	82.00	67.75	82.62	82.00	93.29	113.77	249.00	216.01	86.75	249.00	282.07	113.28
2. IOC, Barauni	493.00	547.06	110.97	492.00	541.22	110.00	1496.00	1682.99	112.50	1492.00	1542.78	103.40
3. IOC, Gujarat	1126.00	1233.47	109.54	1123.00	1176.21	104.74	3416.00	3688.75	107.98	3406.00	2984.38	87.62
4. IOC, Haldia	616.00	681.66	110.66	615.00	667.00	108.46	1870.00	2087.18	111.61	1865.00	1976.82	106.00
5. IOC, Mathura	658.00	796.81	121.10	656.00	732.79	111.71	1995.00	2408.04	120.70	1989.00	2107.32	105.95
6. IOC, Digboi	53.00	43.16	81.42	53.00	51.36	96.91	162.00	140.78	86.90	162.00	135.72	83.78
7. IOC, Panipat	1233.00	1356.59	110.02	1230.00	1212.38	98.57	3740.00	4058.60	108.52	3730.00	3871.89	103.80
8. IOC, Bongaigaon	193.00	199.57	103.40	193.00	200.49	103.88	586.00	625.80	106.79	584.00	667.10	114.23
9. IOC, Paradip	1233.00	256.99	20.84	0.00	0.00	0.00	3740.00	1189.53	31.81	0.00	0.00	0.00
Total IOC	5688.00	5183.04	91.12	4443.00	4674.73	105.22	17253.00	16097.65	93.30	13476.00	13568.07	100.68
10. BPCL, Mumbai	986.00	1163.18	117.97	984.00	1056.42	107.36	2992.00	3478.05	116.25	2984.00	3356.62	112.49
11. BPCL, Kochi	781.00	896.54	114.79	779.00	902.92	115.91	2368.00	2724.36	115.05	2362.00	2724.95	115.37
Total BPCL	1767.00	2059.72	116.57	1762.00	1959.34	111.20	5360.00	6202.41	115.72	5346.00	6081.57	113.76
12. HPCL, Mumbai	534.00	624.96	117.03	533.00	652.85	122.48	1621.00	2062.41	127.23	1616.00	1623.21	100.45
13. HPCL, Visakh	682.00	797.81	116.98	680.00	588.39	86.53	2069.00	2416.63	116.80	2064.00	2134.61	103.42
Total HPCL	1216.00	1422.76	117.00	1213.00	1241.24	102.33	3690.00	4479.04	121.38	3680.00	3757.82	102.11
14. CPCL, Manali	863.00	881.60	102.15	861.00	905.61	105.18	2618.00	2503.85	95.64	2611.00	2712.87	103.90
15. CPCL, CBR	82.00	33.49	40.84	82.00	48.10	58.66	249.00	138.79	55.74	249.00	130.50	52.41
Total CPCL	945.00	915.08	96.83	943.00	953.71	101.14	2867.00	2642.64	92.17	2859.00	2843.37	99.45
16. NRL, Numaligarh	247.00	232.81	94.26	246.00	260.82	106.02	748.00	687.68	91.94	746.00	413.07	55.37
17. MRPL, Mangalore	1233.00	1273.82	103.31	1230.00	1463.31	118.97	3740.00	3672.17	98.19	3730.00	3910.82	104.85
18. ONGC, Tatipaka	5.00	7.76	155.18	5.00	5.50	109.94	16.00	20.96	131.03	16.00	13.71	85.66
B. Joint Venture Sector	1233.00	1410.60	114.40	1230.00	1498.10	121.80	3740.00	4426.05	118.34	3730.00	3891.78	104.34
19. BORL, Bina	493.00	532.28	107.97	492.00	601.08	122.17	1496.00	1682.37	112.46	1492.00	1173.73	78.67
20. HMEL, GGSR, Bhatinda	740.00	878.32	118.69	738.00	897.02	121.55	2244.00	2743.67	122.27	2238.00	2718.04	121.45
C. Private Sector	6575.00	7661.85	116.53	6557.00	7426.97	113.27	19945.00	22044.58	110.53	19891.00	21797.25	109.58
21. RIL, Jamnagar	2712.00	2726.51	100.53	2705.00	2713.90	100.33	8227.00	8314.78	101.07	8205.00	7477.96	91.14
22. RIL, SEZ	2219.00	3215.25	144.90	2213.00	3023.28	136.61	6732.00	8512.28	126.45	6713.00	9147.46	136.26
Total RIL	4932.00	5941.75	120.47	4918.00	5737.18	116.66	14959.00	16827.06	112.49	14918.00	16625.42	111.45
23. EOL, Vadinar	1644.00	1720.10	104.63	1639.00	1689.79	103.10	4986.00	5217.51	104.64	4973.00	5171.83	104.00
TOTAL(A+B+C)	18910.00	20167.44	106.65	17628.00	19483.70	110.53	57359.00	60273.18	105.08	53473.00	56277.43	105.24

*: Provisional. **: Revised

MINISTRY OF PETROLEUM & NATURAL GAS

Production of Petroleum Products during the month of June, 2016 and cumulatively for the period April-June, 2016 vis-à-vis April-June, 2015

(Qty: '000' Tonnes)

Name of Undertaking/Unit	Planned production during the month	Production during the			Cumulative Production			% variation over last year		% variation during the month under review over planned production
		Month under review *	Corresponding month of last year	Preceding month of current year **	(April-June)			During the month under review	Upto the end of the period	
					Planned production during current year	Actual production during current year*	Actual production during corresponding period of last year**			
(1)	(2)	(3)	(4)	(5)	(5)	(6)	(7)	(8)	(9)	(10)
I. Refinery										
A. Public Sector	10466.149	10532.419	9955.790	10892.823	31791.186	31765.189	28708.778	5.79	10.65	0.63
1. IOC, Guwahati	78.640	94.649	107.189	94.753	238.657	291.031	308.007	-11.70	-5.51	20.36
2. IOC, Barauni	486.561	484.042	495.435	523.090	1475.864	1523.880	1437.325	-2.30	6.02	-0.52
3. IOC, Gujarat	1135.573	1159.326	1133.878	1201.873	3399.185	3478.132	2839.742	2.24	22.48	2.09
4. IOC, Haldia	619.000	624.805	644.414	638.849	1863.000	1861.609	1805.722	-3.04	3.09	0.94
5. IOC, Mathura	701.364	789.569	729.384	770.218	2127.250	2312.495	2081.238	8.25	11.11	12.58
6. IOC, Digboi	55.460	49.312	53.007	43.284	167.143	144.562	127.677	-6.97	13.22	-11.09
7. IOC, Panipat	1270.700	1337.605	1206.773	1422.266	3853.700	4107.403	3864.961	10.84	6.27	5.27
8. IOC, Bongaigaon	170.558	179.604	182.640	183.672	536.416	555.786	588.250	-1.66	-5.52	5.30
9. IOC, Paradip	688.000	255.095	0.000	433.204	1793.300	1033.358	0.000	-	-	-62.92
Total IOC	5205.856	4974.007	4552.720	5311.209	15454.516	15308.256	13052.922	9.25	17.28	-4.45
10. BPCL, Mumbai	1101.709	1124.250	1000.374	1137.418	3343.997	3341.384	3193.708	12.38	4.62	2.05
11. BPCL, Kochi	834.219	846.361	872.605	908.590	2499.810	2562.793	2587.728	-3.01	-0.96	1.46
Total BPCL	1935.928	1970.611	1872.979	2046.008	5843.807	5904.177	5781.436	5.21	2.12	1.79
12. HPCL, Mumbai	585.308	573.589	533.706	680.845	1775.436	1892.185	1401.217	7.47	35.04	-2.00
13. HPCL, Visakh	567.436	747.752	530.327	725.746	2029.821	2214.816	1931.327	41.00	14.68	31.78
Total HPCL	1152.743	1321.341	1064.033	1406.591	3805.257	4107.001	3332.544	24.18	23.24	14.63
14. CPCL, Manali	780.959	835.531	842.573	743.219	2367.767	2302.816	2497.582	-0.84	-7.80	6.99
15. CPCL, CBR	49.674	33.607	48.683	49.661	150.564	139.086	132.579	-30.97	4.91	-32.34
Total CPCL	830.633	869.138	891.256	792.880	2518.331	2441.902	2630.161	-2.48	-7.16	4.64
16. NRL, Numaligarh	226.189	230.791	260.838	239.264	684.954	679.927	390.371	-11.52	74.17	2.03
17. MRPL, Mangalore	1113.600	1159.437	1308.544	1090.585	3475.400	3303.864	3507.980	-11.39	-5.82	4.12
18. ONGC, Tatipaka	1.200	7.094	5.421	6.286	8.920	20.062	13.364	30.87	50.11	491.18
B. Joint Venture Sector	1211.686	1324.441	1433.629	1483.669	3659.889	4134.433	3578.940	-7.62	15.52	9.31
19. BOREL, Bina	484.100	477.599	571.898	575.053	1452.300	1504.612	1008.082	-16.49	49.25	-1.34
20. HMEL, GGSR, Bhatinda	727.586	846.842	861.731	908.616	2207.589	2629.821	2570.858	-1.73	2.29	16.39
C. Private Sector	7526.365	8066.918	7483.244	7419.040	21927.467	23114.815	21932.954	7.80	5.39	7.18
21. RIL, Jamnagar	2646.138	2885.195	2646.138	2871.388	7498.764	8342.645	7498.764	9.03	11.25	9.03
22. RIL, SEZ	3247.681	3481.835	3247.681	2798.333	9531.065	9711.726	9531.065	7.21	1.90	7.21
Total RIL	5893.819	6367.030	5893.819	5669.721	17029.829	18054.371	17029.829	8.03	6.02	8.03
23. EOL, Vadinar	1632.546	1699.888	1589.425	1749.319	4897.638	5060.444	4903.125	6.95	3.21	4.12
TOTAL(A+B+C)	19204.200	19923.778	18872.663	19795.531	57378.542	59014.437	54220.673	5.57	8.84	3.75
II. Fractionators										
ONGC	233.310	250.269	180.957	263.082	676.950	733.423	609.831	38.30	20.27	7.27
OIL	1.100	1.481	1.846	3.075	8.200	7.905	9.306	-19.77	-15.05	34.64
GAIL	73.542	81.972	96.553	88.725	254.071	255.553	278.339	-15.10	-8.19	11.46
D. Total Fractionators	307.952	333.722	279.356	354.882	939.221	996.881	897.476	19.46	11.08	8.37
Grand Total (A+B+C+D)	19512.152	20257.500	19152.019	20150.413	58317.763	60011.318	55118.149	5.77	8.88	3.82

Note: Totals may not tally due to rounding off figures.

*: Provisional. **: Revised