

**Government of India**  
**Ministry of Petroleum and Natural Gas**  
**Economics & Statistics Division**

\*\*\*\*\*

New Delhi  
Dated the 23<sup>rd</sup> August, 2016

**Monthly Production Report**  
**July 2016**

---

**Crude Oil**

- Crude oil production<sup>1</sup> during July 2016 was 3077.40 TMT which is 0.39% and 1.81% lower than target and production achieved in July 2015 respectively. Cumulative crude oil production during April-July, 2016 was 12078.34 TMT which is 0.69% and 2.95% lower than target and production during corresponding period of last year respectively. Unit-wise and state-wise crude oil production is given at Annexure-I. Unit-wise crude oil production for the month of July, 2016 and cumulatively for the period April-July, 2016 vis-à-vis same period of last year has been shown in Table-1 and month-wise in Figure-1.

**Table-1: Crude Oil Production (in TMT)**

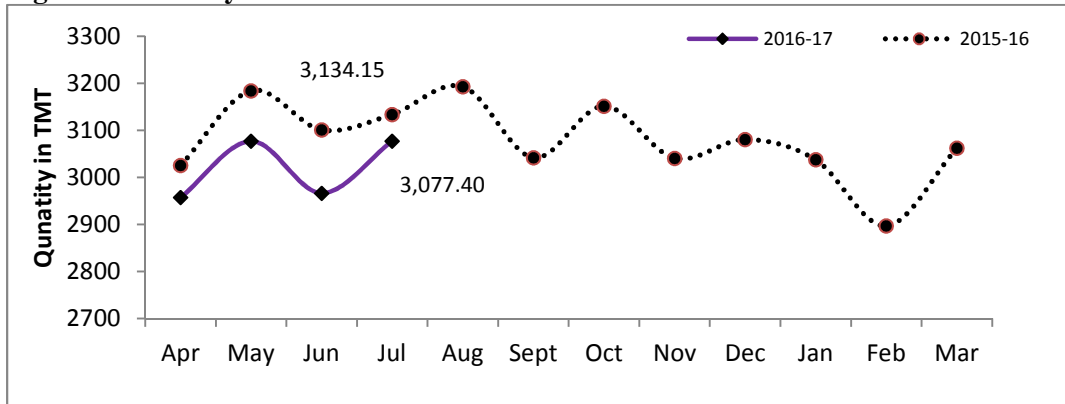
Oil Company	Target	July (Month)				April-July (Cumulative)			
	2016-17 (Apr-Mar)	2016-17		2015-16	% over last year	2016-17		2015-16	% over last year
		Target	Prod.*	Prod.		Target	Prod.*	Prod.	
ONGC	22766.00	1899.32	1867.77	1880.87	99.30	7442.90	7359.84	7455.31	98.72
OIL	3480.00	270.76	272.69	275.14	99.11	1068.94	1070.87	1112.12	96.29
PSC Fields	10839.32	919.52	936.94	978.14	95.79	3649.88	3647.63	3877.75	94.07
<b>Total</b>	<b>37085.32</b>	<b>3089.60</b>	<b>3077.40</b>	<b>3134.15</b>	<b>98.19</b>	<b>12161.71</b>	<b>12078.34</b>	<b>12445.18</b>	<b>97.05</b>

\*: Provisional

---

<sup>1</sup> Including condensate

**Figure-1: Monthly Crude Oil Production**



Unit-wise production details with reasons for shortfall have been given in following sub-sections:

1.1 Crude oil production by ONGC during July, 2016 was 1867.77 TMT which is 1.66% lower than the monthly target and 0.70% less when compared with July 2015. Cumulative crude oil production during April-July, 2016 was 7359.84 TMT which is 1.12% lower than target for the period and 1.28% lower than the production during corresponding period of last year. Reasons for shortfall in production in some fields are as under:

- Natural decline from matured and marginal cluster fields
- Maintenance of Mumbai-Uran Trunkline due to safety reasons
- Assam: Less than envisaged production from new wells, producing wells becoming sick, power shutdown & less gas injection pressure.
- Rajahmundry: Closure of 24 wells due to repair / replacement of Kadali-Tatipaka & Endamuru-Oduru GAIL pipelines. Decline in flowing pressure of self-flowing wells in Malleshwaram field. Increase in water cut in Gopavaram field.
- Cauvery: Less than envisaged production from Kamlapuram.

1.2 Crude oil production by OIL during July, 2016 was 272.69 TMT which is 0.71% higher than monthly target and 0.89% less than production in July 2015. Cumulative crude oil production during April-July, 2016 was 1070.87 TMT which is 0.18% higher than target for the period but 3.71% lower than the production during corresponding period of last year. Reasons for shortfall in production are as under:

- Less than planned contribution from old well
- Rise in water cut in wells of Greater Hapjan, Bhogpara & Greater Chandmari fields
- Loss in production due to bandhs and blockades by various Organisations

1.3 Crude oil production by Pvt. /JVs during July 2016 was 936.94 TMT which is 1.90% higher than the monthly target but 4.21% less when compared with July, 2015. Cumulative crude oil production during April-July, 2016 was 3647.63 TMT which is 0.06% lower than target for the period and 5.93% lower than the production during corresponding period of last year. Reasons for shortfall in production are as under:

- Natural Decline in Ravva, CB-OS/2 and Panna-Mukta
- Closure of one well in MA and one well in D1D3 field

## Natural Gas

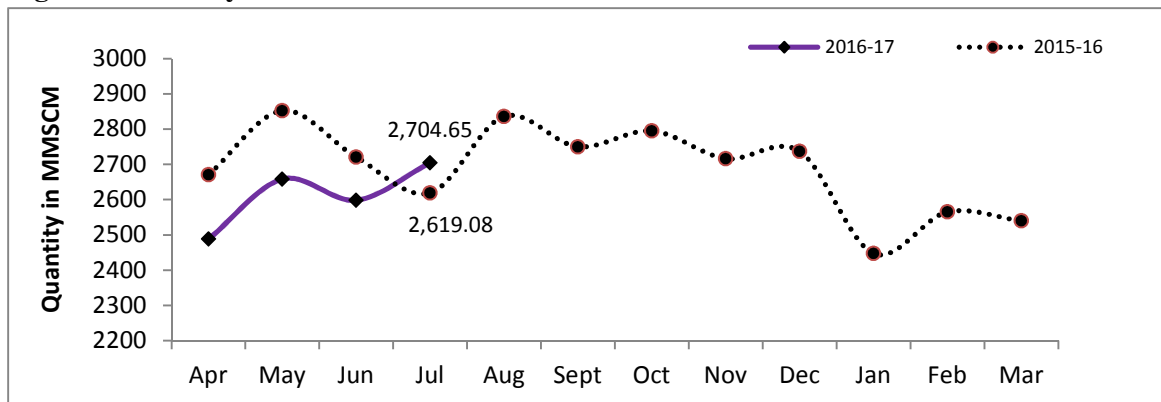
2. Natural gas production during July 2016 was 2704.65 MMSCM which is 2.76% lower than the target for the month but 3.27% higher than the production in July 2015. Cumulative natural gas production during April-July, 2016 was 10449.30 MMSCM which is 2.85% lower than target for the period and 3.80% lower than the production during corresponding period of last year. Unit-wise and state-wise natural gas production is given at Annexure-II. Unit-wise natural gas production for the month of July, 2016 and cumulatively for the period April-July, 2016 vis-à-vis same period of last year has been shown in Table-2 and month-wise in Figure-2.

**Table-2: Natural Gas Production (MMSCM)**

Oil Company	Target	July (Month)				April-July (Cumulative)			
	2016-17 (Apr-Mar)	2016-17		2015-16	% over last year	2016-17		2015-16	% over last year
		Target	Prod.*	Prod.		Target	Prod.*	Prod.	
ONGC	22743.43	1855.79	1823.73	1684.81	108.25	7086.84	6996.14	7166.68	97.62
OIL	2950.03	260.61	256.12	232.59	110.12	1008.77	986.83	874.23	112.88
PSC Fields	8425.44	665.06	624.80	701.69	89.04	2660.12	2466.33	2821.52	87.41
<b>Total</b>	<b>34118.90</b>	<b>2781.46</b>	<b>2704.65</b>	<b>2619.08</b>	<b>103.27</b>	<b>10755.72</b>	<b>10449.30</b>	<b>10862.42</b>	<b>96.20</b>

\*: Provisional

**Figure-2: Monthly Natural Gas Production**



2.1 Natural gas production by ONGC during July, 2016 was 1823.73 MMSCM which is 1.73% lower than the monthly target but 8.25% higher when compared with July 2015. Cumulative natural gas production during April-July, 2016 was 6996.14 MMSCM which is 1.28% lower than the cumulative target and 2.38% lower than the production during the corresponding period of last year. Reasons for shortfall in production are as under:

- Offshore: Natural decline from Bassein field and restricted withdrawal of gas by GAIL in EOA
- Ankleshwar: Closure of wells in Gandhar / North Gandhar fields due to pipeline repairs by M/s. GAIL
- Karaikal : Less off-take by GAIL consumers

2.2 Natural gas production by OIL during July, 2016 was 256.12 MMSCM which is 1.73% lower than the monthly target but 10.12% higher than July 2015. Cumulative natural gas production during April-July, 2016 was 986.83 MMSCM which is 2.17% lower than the cumulative target but 12.88% higher than the production during the corresponding period of last year. Reasons for shortfall in production are as under:

- NTPS: due to shutdown of GT#2 and GT#5 and load evacuation problem.
- Loss in production due to water loading problem in few wells.
- Disruption in gas supply due to blockade and restricted browser movement in Deohal area.
- Unscheduled shutdown by IOCL (AOD) for maintenance.

2.3 Natural gas production by Pvt. /JVs during July 2016 was 624.80 MMSCM which is 6.05% lower than the monthly target and 10.96% less when compared with July, 2015. Cumulative natural gas production during April-July, 2016 was 2466.33 MMSCM which is 7.28% lower than the cumulative target and 12.59% lower than the production during the corresponding period of last year. Reasons for shortfall in production are as under:

- Underperformance of KG-OSN-2001/3, RJ-ON/6
- Underperformance of Raniganj East, Sohagpur West & Raniganj South CBM blocks
- Closure of one well in KG-DWN-98/3
- Natural decline in PY-1
- Water loading and sand ingress in Kharsang wells.

### Refinery Production (in terms of Crude oil processed)

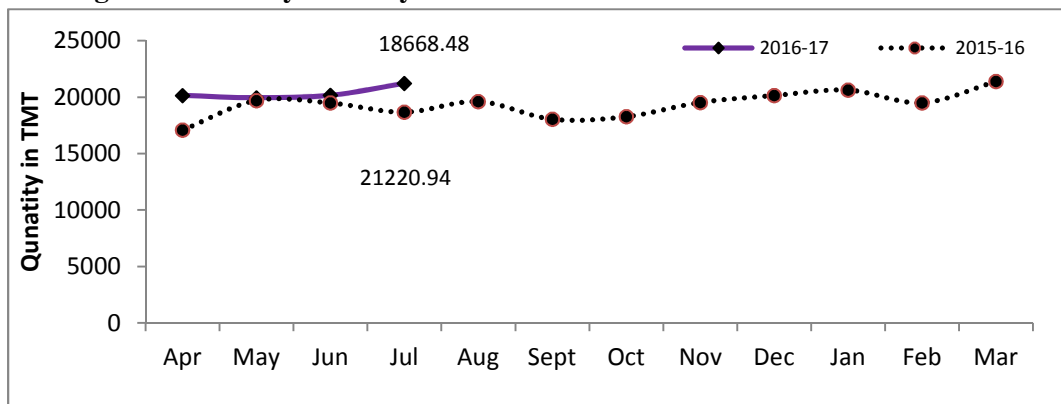
3 Refinery production during July, 2016 was 21220.94 TMT which is 9.19% higher than the target for the month and 13.67% higher than the production during corresponding period of last year. Cumulative production during April-July, 2016 was 81494.12 TMT which is 3.60% higher than the target for the period and 8.74% higher than the production during corresponding period of last year. Unit-wise production is given at Annexure-III. Unit-wise production for the month of July, 2016 and cumulatively for the period April-July, 2016 vis-à-vis same period of last year has been shown in Table-3 and month-wise in Figure-3.

**Table 3: Refinery Production (TMT)**

Oil Company	Target	July (Month)				April-July (Cumulative)			
	2016-17 (Apr-Mar)	2016-17		2015-16	% over last year	2016-17		2015-16	% over last year
		Target	Prod.*	Prod.		Target	Prod.*	Prod.	
<b>PSUs</b>	<b>135565.03</b>	<b>11115.83</b>	<b>11811.69</b>	<b>10053.77</b>	<b>117.49</b>	<b>44731.78</b>	<b>45614.25</b>	<b>40642.18</b>	<b>112.23</b>
IOCL	65100.00	5371.42	5685.86	4749.11	119.72	21224.38	21783.51	18317.17	118.92
BPCL	25250.15	2062.27	2133.17	2027.54	105.21	8161.51	8335.57	8109.11	102.79
HPCL	16800.29	1395.71	1420.68	1156.09	122.89	5778.58	5899.72	4913.91	120.06
CPCL	10250.00	951.11	996.21	756.43	131.70	3648.25	3638.85	3599.80	101.08
NRL	2670.00	231.37	236.90	252.56	93.80	911.07	924.58	665.63	138.90
MRPL	15450.00	1100.00	1331.96	1106.76	120.35	4995.00	5004.13	5017.57	99.73
ONGC	44.59	3.95	6.93	5.28	131.14	12.99	27.89	18.99	146.90
<b>JVs</b>	<b>15000.00</b>	<b>1321.02</b>	<b>1410.45</b>	<b>1553.20</b>	<b>90.81</b>	<b>5232.71</b>	<b>5836.50</b>	<b>5444.97</b>	<b>107.19</b>
BORL	6000.00	525.00	501.85	631.08	79.52	2100.00	2184.22	1804.81	121.02
HMEL	9000.00	796.02	908.60	922.12	98.53	3132.71	3652.28	3640.16	100.33
<b>Private</b>	<b>89852.65</b>	<b>6997.19</b>	<b>7998.79</b>	<b>7061.52</b>	<b>113.27</b>	<b>28695.58</b>	<b>30043.37</b>	<b>28858.76</b>	<b>104.10</b>
RIL	69561.01	5306.19	6238.53	5306.19	117.57	21931.61	23065.59	21931.61	105.17
EOL	20291.64	1691.00	1760.26	1755.33	100.28	6763.97	6977.78	6927.16	100.73
<b>TOTAL</b>	<b>240417.68</b>	<b>19434.03</b>	<b>21220.94</b>	<b>18668.48</b>	<b>113.67</b>	<b>78660.07</b>	<b>81494.12</b>	<b>74945.91</b>	<b>108.74</b>

\*: Provisional

**Figure 3: Monthly Refinery Production**



- 3.1 PSU Refineries' production during July, 2016 was 11811.69 TMT which is 6.26% higher than the target for the month and 17.49% higher than the production achieved in the corresponding month of last year. Cumulative production during April-July, 2016 was 45614.25 TMT which is 1.97% higher than the target for the period and 12.23% higher than the production during corresponding period of last year. Reasons for shortfall of refinery production in some PSU refineries are as under:
- IOCL, Guwahati & Digboi: Lower crude availability.
  - CPCL, CBR: Crude throughput lower than target due to planned shutdown.
  - NRL, Numaligarh: Lower availability of Assam crude.
- 3.2 Production in JV refineries during July, 2016 was 1410.45 TMT which is 6.77% higher than the target for the month but 9.19% lower than the production achieved in the corresponding month of last year. Cumulative production during April-July, 2016 was 5836.50 TMT which is 11.54% higher than the target for the period and 7.19% higher than the production during corresponding period of last year.
- 3.3 Production in private refineries during July, 2016 was 7998.79 TMT which is 14.31% higher than the target for the month and 13.27% higher than the production achieved in the corresponding month of last year. Cumulative production during April-July, 2016 was 30043.37 TMT which is 4.70% higher than the target for the period and 4.10% higher than the production during corresponding period of last year.
- 3.4 Refinery-wise details of the capacity utilization and production of petroleum products during the month of July, 2016 and cumulatively for the period April-July, 2016 vis-à-vis April -July, 2015 are given at Annexures-IV and V respectively.

\*\*\*\*\*

## Annexure-I

(Para 1)

## MINISTRY OF PETROLEUM &amp; NATURAL GAS

## Crude Oil Production during the month of July, 2016 and cumulatively for the period April-July, 2016 vis-à-vis April-July, 2015

(Qty: '000' Tonnes)

Name of Undertaking/Unit/State	Planned production during the month	Production during the			Cumulative Production			% variation over last year		% variation during the month under review over planned production
		Month under review *	Corresponding month of last year **	Preceding month of current year **	(April-July)			During the month under review	Upto the end of the period	
					Planned production during current year	Actual production during current year *	Actual production during corresponding period of last year **			
(1)	(2)	(3)	(4)	(5)	(5)	(6)	(7)	(8)	(9)	(10)
<b>1. ONGC</b>	<b>1899.321</b>	<b>1867.769</b>	<b>1880.871</b>	<b>1802.987</b>	<b>7442.895</b>	<b>7359.837</b>	<b>7455.309</b>	<b>-0.70</b>	<b>-1.28</b>	<b>-1.66</b>
<b>Onshore</b>	<b>496.305</b>	<b>496.593</b>	<b>475.984</b>	<b>476.434</b>	<b>1956.241</b>	<b>1947.095</b>	<b>1919.965</b>	<b>4.33</b>	<b>1.41</b>	<b>0.06</b>
Andhra Pradesh	22.889	21.248	26.944	20.561	89.869	84.489	101.499	-21.14	-16.76	-7.17
Assam ^	83.189	78.692	82.285	76.205	320.713	310.585	324.579	-4.37	-4.31	-5.41
Gujarat	371.269	377.733	345.035	360.548	1469.691	1474.787	1405.615	9.48	4.92	1.74
Tamil Nadu	18.958	18.920	21.720	19.120	75.968	77.234	88.272	-12.89	-12.50	-0.20
<b>Offshore</b>	<b>1403.016</b>	<b>1371.176</b>	<b>1404.887</b>	<b>1326.553</b>	<b>5486.654</b>	<b>5412.742</b>	<b>5535.344</b>	<b>-2.40</b>	<b>-2.21</b>	<b>-2.27</b>
Eastern Offshore	1.290	1.103	1.768	1.163	5.836	4.996	7.409	-37.61	-32.57	-14.50
Western Offshore	1284.846	1251.918	1319.227	1216.376	5025.487	4957.076	5098.576	-5.10	-2.78	-2.56
Condensates	116.880	118.155	83.892	109.014	455.331	450.670	429.359	40.84	4.96	1.09
<b>2. OIL (Onshore)</b>	<b>270.762</b>	<b>272.690</b>	<b>275.143</b>	<b>265.367</b>	<b>1068.940</b>	<b>1070.868</b>	<b>1112.123</b>	<b>-0.89</b>	<b>-3.71</b>	<b>0.71</b>
Assam	270.188	272.039	274.973	264.736	1066.427	1068.278	1110.703	-1.07	-3.82	0.69
Arunachal Pradesh	0.574	0.651	0.170	0.631	2.513	2.590	1.420	282.94	82.39	13.41
<b>3. DGH (Private / JVC)</b>	<b>919.516</b>	<b>936.942</b>	<b>978.139</b>	<b>898.186</b>	<b>3649.877</b>	<b>3647.633</b>	<b>3877.748</b>	<b>-4.21</b>	<b>-5.93</b>	<b>1.90</b>
<b>Onshore</b>	<b>740.646</b>	<b>743.790</b>	<b>737.326</b>	<b>708.167</b>	<b>2902.624</b>	<b>2888.449</b>	<b>2970.111</b>	<b>0.88</b>	<b>-2.75</b>	<b>0.42</b>
Arunachal Pradesh	4.401	3.954	4.255	3.918	16.356	15.760	16.843	-7.07	-6.43	-10.16
Gujarat	14.484	11.668	11.888	11.556	53.566	46.359	47.208	-1.85	-1.80	-19.44
Rajasthan	716.706	725.381	721.183	691.050	2820.602	2819.447	2906.060	0.58	-2.98	1.21
Tamil Nadu	5.054	2.787	0.000	1.643	12.099	6.883	0.000	-	-	-
<b>Offshore</b>	<b>178.870</b>	<b>193.152</b>	<b>240.813</b>	<b>190.019</b>	<b>747.253</b>	<b>759.184</b>	<b>907.637</b>	<b>-19.79</b>	<b>-16.36</b>	<b>7.98</b>
Eastern Offshore	83.551	81.378	119.687	80.957	335.335	328.401	490.418	-32.01	-33.04	-2.60
Gujarat Offshore	31.569	32.891	39.749	33.071	131.828	134.016	129.802	-17.25	3.25	4.19
Western Offshore	63.750	78.883	81.377	75.991	280.090	296.767	287.417	-3.06	3.25	23.74
<b>GRAND TOTAL (1+2+3)</b>	<b>3089.599</b>	<b>3077.401</b>	<b>3134.153</b>	<b>2966.540</b>	<b>12161.712</b>	<b>12078.338</b>	<b>12445.180</b>	<b>-1.81</b>	<b>-2.95</b>	<b>-0.39</b>
Onshore	1507.713	1513.073	1488.453	1449.968	5927.805	5906.412	6002.199	1.65	-1.60	0.36
Offshore	1581.886	1564.328	1645.700	1516.572	6233.907	6171.926	6442.981	-4.94	-4.21	-1.11

Note: Totals may not tally due to rounding off figures.

^: Includes crude oil production of Tripura

\*: Provisional. \*\*: Revised

Reasons for shortfall are indicated in the note.

## MINISTRY OF PETROLEUM &amp; NATURAL GAS

## Natural Gas Production during the month of July, 2016 and cumulatively for the period April-July, 2016 vis-à-vis April-July, 2015

(Qty: Million Cubic Meters)

Name of Undertaking/Unit/State	Planned production during the month	Production during the			Cumulative Production (April-July)			% variation over last year		% variation during the month under review over planned production
		Month under review *	Corresponding month of last year **	Preceding month of current year **	Planned production during current year	Actual production during current year *	Actual production during corresponding period of last year **	During the month under review	Upto the end of the period	
(1)	(2)	(3)	(4)	(5)	(5)	(6)	(7)	(8)	(9)	(10)
<b>1. ONGC</b>	<b>1855.794</b>	<b>1823.732</b>	<b>1684.812</b>	<b>1748.600</b>	<b>7086.839</b>	<b>6996.136</b>	<b>7166.677</b>	<b>8.25</b>	<b>-2.38</b>	<b>-1.73</b>
<b>Onshore</b>	<b>427.774</b>	<b>422.336</b>	<b>410.605</b>	<b>396.861</b>	<b>1707.319</b>	<b>1609.876</b>	<b>1588.765</b>	<b>2.86</b>	<b>1.33</b>	<b>-1.27</b>
Andhra Pradesh	54.718	73.004	48.493	68.318	219.759	254.021	202.871	50.55	25.21	33.42
Assam	35.952	36.978	33.320	37.328	139.100	145.498	133.305	10.98	9.15	2.85
Gujarat	123.731	118.486	111.326	99.611	493.184	441.418	460.333	6.43	-4.11	-4.24
Rajasthan	0.425	0.122	0.209	0.530	1.671	1.137	1.985	-41.63	-42.71	-71.27
Tamil Nadu	92.412	74.212	94.115	74.423	375.458	310.751	374.562	-21.15	-17.04	-19.69
Tripura	120.537	119.534	123.142	116.651	478.146	457.051	415.709	-2.93	9.94	-0.83
<b>Offshore</b>	<b>1428.019</b>	<b>1401.396</b>	<b>1274.207</b>	<b>1351.739</b>	<b>5379.520</b>	<b>5386.260</b>	<b>5577.913</b>	<b>9.98</b>	<b>-3.44</b>	<b>-1.86</b>
Eastern Offshore	54.115	29.774	21.630	29.155	129.705	71.188	85.953	37.65	-17.18	-44.98
Western Offshore	1373.905	1371.622	1252.577	1322.584	5249.815	5315.072	5491.960	9.50	-3.22	-0.17
<b>2. OIL</b>	<b>260.613</b>	<b>256.116</b>	<b>232.585</b>	<b>241.247</b>	<b>1008.765</b>	<b>986.828</b>	<b>874.227</b>	<b>10.12</b>	<b>12.88</b>	<b>-1.73</b>
Assam	238.641	234.405	213.171	219.779	920.301	899.313	811.220	9.96	10.86	-1.78
Arunachal Pradesh	1.242	0.978	1.053	0.984	4.904	3.955	4.197	-7.12	-5.77	-21.26
Rajasthan	20.730	20.733	18.361	20.484	83.560	83.560	58.810	12.92	42.08	0.01
<b>3. DGH (Private / JVC)</b>	<b>665.056</b>	<b>624.798</b>	<b>701.685</b>	<b>608.554</b>	<b>2660.120</b>	<b>2466.334</b>	<b>2821.520</b>	<b>-10.96</b>	<b>-12.59</b>	<b>-6.05</b>
<b>Onshore</b>	<b>102.658</b>	<b>104.920</b>	<b>104.597</b>	<b>100.300</b>	<b>401.363</b>	<b>420.236</b>	<b>383.440</b>	<b>0.31</b>	<b>9.60</b>	<b>2.20</b>
Assam	0.000	0.000	0.000	0.000	0.000	0.000	0.000	0.00	0.00	0.00
Arunachal Pradesh	0.744	1.225	1.747	1.215	2.765	4.857	6.788	-29.88	-28.45	64.65
Gujarat	7.465	7.793	7.870	7.733	28.777	31.789	31.583	-0.98	0.65	4.40
Rajasthan	93.869	95.625	94.980	91.189	368.466	382.912	345.069	0.68	10.97	1.87
Tamil Nadu	0.580	0.277	0.000	0.163	1.355	0.678	0.000	-	-	-
<b>CBM</b>	<b>72.436</b>	<b>46.858</b>	<b>33.930</b>	<b>43.669</b>	<b>243.815</b>	<b>170.412</b>	<b>128.172</b>	<b>38.10</b>	<b>32.96</b>	<b>-35.31</b>
Jharkhand (CBM)	0.275	0.294	0.090	0.197	1.083	0.898	0.586	226.67	53.24	6.81
Madhya Pradesh (CBM)	14.620	0.342	0.190	0.422	34.180	1.493	0.454	80.00	228.85	-97.66
West Bengal (CBM)	57.541	46.222	33.650	43.050	208.552	168.021	127.132	37.36	32.16	-19.67
<b>Offshore</b>	<b>489.962</b>	<b>473.020</b>	<b>563.158</b>	<b>464.585</b>	<b>2014.942</b>	<b>1875.686</b>	<b>2309.908</b>	<b>-16.01</b>	<b>-18.80</b>	<b>-3.46</b>
Eastern Offshore	350.677	282.313	396.034	281.998	1438.847	1159.256	1565.452	-28.71	-25.95	-19.49
Gujarat Offshore	3.325	7.152	6.834	6.884	13.086	27.068	20.853	4.65	29.80	115.09
Western Offshore	135.960	183.555	160.290	175.703	563.010	689.362	723.603	14.51	-4.73	35.01
<b>TOTAL (1+2+3)</b>	<b>2781.462</b>	<b>2704.646</b>	<b>2619.082</b>	<b>2598.401</b>	<b>10755.724</b>	<b>10449.298</b>	<b>10862.425</b>	<b>3.27</b>	<b>-3.80</b>	<b>-2.76</b>
CBM	72.436	46.858	33.930	43.669	243.815	170.412	128.172	38.10	32.96	-35.31
Onshore	791.045	783.372	747.787	738.416	3117.447	3016.940	2846.432	4.76	5.99	-0.97
Offshore	1917.981	1874.416	1837.365	1816.324	7394.462	7261.946	7887.821	2.02	-7.93	-2.27

Note: Totals may not tally due to rounding off figures.

\*: Provisional. \*\*: Revised

CBM: Coal Bed Methane

Reasons for shortfall are indicated in the note.



## MINISTRY OF PETROLEUM &amp; NATURAL GAS

Refinery Production (in terms of crude oil processed) during the month of July, 2016 and cumulatively for the period April-July, 2016 vis-à-vis April-July, 2015

(Qty: '000' Tonnes)

Name of Undertaking/Unit	Planned production during the month	Production during the			Cumulative Production			% variation over last year		% variation during the month under review over planned production
		Month under review *	Corresponding month of last year	Preceding month of current year **	(April-July)			During the month under review	Upto the end of the period	
					Planned production during current year	Actual production during current year *	Actual production during corresponding period of last year **			
(1)	(2)	(3)	(4)	(5)	(5)	(6)	(7)	(8)	(9)	(10)
<b>A. Public Sector</b>	<b>11115.825</b>	<b>11811.694</b>	<b>10053.767</b>	<b>11094.992</b>	<b>44731.777</b>	<b>45614.252</b>	<b>40642.178</b>	<b>17.49</b>	<b>12.23</b>	<b>6.26</b>
1. IOC, Guwahati	84.000	85.650	84.597	67.746	332.000	301.658	366.664	1.24	-17.73	1.96
2. IOC, Barauni	533.204	576.496	533.943	547.059	2098.403	2259.484	2076.719	7.97	8.80	8.12
3. IOC, Gujarat	1223.615	1273.444	1256.236	1233.471	4916.272	4962.189	4240.613	1.37	17.02	4.07
4. IOC, Haldia	660.044	659.372	663.362	681.656	2744.289	2746.548	2640.184	-0.60	4.03	-0.10
5. IOC, Mathura	724.999	754.922	757.257	796.809	3113.503	3162.960	2864.573	-0.31	10.42	4.13
6. IOC, Digboi	16.000	23.701	49.060	43.155	184.000	164.477	184.780	-51.69	-10.99	48.13
7. IOC, Panipat	1332.563	1400.066	1191.240	1356.587	5245.700	5458.661	5063.130	17.53	7.81	5.07
8. IOC, Bongaigaon	196.996	214.852	213.414	199.569	800.811	840.649	880.511	0.67	-4.53	9.06
9. IOC, Paradip	600.000	697.353	0.000	256.992	1789.400	1886.883	0.000	-	-	16.23
<b>Total IOC</b>	<b>5371.421</b>	<b>5685.856</b>	<b>4749.109</b>	<b>5183.044</b>	<b>21224.379</b>	<b>21783.509</b>	<b>18317.174</b>	<b>19.72</b>	<b>18.92</b>	<b>5.85</b>
10. BPCL, Mumbai	1178.937	1210.379	1099.242	1163.181	4674.145	4688.430	4455.866	10.11	5.22	2.67
11. BPCL, Kochi	883.333	922.786	928.297	896.535	3487.366	3647.143	3653.242	-0.59	-0.17	4.47
<b>Total BPCL</b>	<b>2062.270</b>	<b>2133.165</b>	<b>2027.539</b>	<b>2059.716</b>	<b>8161.511</b>	<b>8335.573</b>	<b>8109.108</b>	<b>5.21</b>	<b>2.79</b>	<b>3.44</b>
12. HPCL, Mumbai	685.410	689.345	689.869	624.957	2697.420	2751.757	2313.075	-0.08	18.97	0.57
13. HPCL, Visakh	710.300	731.338	466.226	797.805	3081.159	3147.968	2600.835	56.86	21.04	2.96
<b>Total HPCL</b>	<b>1395.710</b>	<b>1420.683</b>	<b>1156.095</b>	<b>1422.762</b>	<b>5778.579</b>	<b>5899.725</b>	<b>4913.910</b>	<b>22.89</b>	<b>20.06</b>	<b>1.79</b>
14. CPCL, Manali	900.000	947.860	707.335	881.596	3448.000	3451.711	3420.207	34.00	0.92	5.32
15. CPCL, CBR	51.106	48.349	49.095	33.487	200.246	187.137	179.592	-1.52	4.20	-5.39
<b>Total CPCL</b>	<b>951.106</b>	<b>996.209</b>	<b>756.430</b>	<b>915.083</b>	<b>3648.246</b>	<b>3638.848</b>	<b>3599.799</b>	<b>31.70</b>	<b>1.08</b>	<b>4.74</b>
16. NRL, Numaligarh	231.366	236.901	252.558	232.812	911.072	924.583	665.629	-6.20	38.90	2.39
17. MRPL, Mangalore	1100.000	1331.955	1106.756	1273.815	4995.000	5004.125	5017.572	20.35	-0.27	21.09
18. ONGC, Tatipaka	3.952	6.925	5.281	7.759	12.991	27.890	18.986	31.14	46.90	75.24
<b>B. Joint Venture Sector</b>	<b>1321.017</b>	<b>1410.451</b>	<b>1553.195</b>	<b>1410.598</b>	<b>5232.712</b>	<b>5836.499</b>	<b>5444.971</b>	<b>-9.19</b>	<b>7.19</b>	<b>6.77</b>
19. BORL, Bina	525.000	501.850	631.075	532.283	2100.000	2184.224	1804.808	-20.48	21.02	-4.41
20. HMEL, GGSR, Bhatinda	796.017	908.601	922.120	878.315	3132.712	3652.275	3640.163	-1.47	0.33	14.14
<b>C. Private Sector</b>	<b>6997.186</b>	<b>7998.793</b>	<b>7061.516</b>	<b>7661.853</b>	<b>28695.578</b>	<b>30043.369</b>	<b>28858.762</b>	<b>13.27</b>	<b>4.10</b>	<b>14.31</b>
21. RIL, Jamnagar	2815.981	2814.023	2815.981	2726.505	10293.944	11128.805	10293.944	-0.07	8.11	-0.07
22. RIL, SEZ	2490.205	3424.507	2490.205	3215.248	11637.663	11936.789	11637.663	37.52	2.57	37.52
<b>Total RIL</b>	<b>5306.186</b>	<b>6238.530</b>	<b>5306.186</b>	<b>5941.753</b>	<b>21931.607</b>	<b>23065.594</b>	<b>21931.607</b>	<b>17.57</b>	<b>5.17</b>	<b>17.57</b>
23. EOL, Vadinar	1691.000	1760.263	1755.330	1720.100	6763.971	6977.775	6927.155	0.28	0.73	4.10
<b>TOTAL(A+B+C)</b>	<b>19434.029</b>	<b>21220.938</b>	<b>18668.479</b>	<b>20167.443</b>	<b>78660.067</b>	<b>81494.120</b>	<b>74945.911</b>	<b>13.67</b>	<b>8.74</b>	<b>9.19</b>

Note: Totals may not tally due to rounding off figures. \*: Provisional. \*\*:Revised

Reasons for shortfall are indicated in the note.

## MINISTRY OF PETROLEUM &amp; NATURAL GAS

(Para 3.4)

## Refinery-wise Capacity Utilisation during the month of July, 2016 and cumulatively for the period April-July 2016 vis-à-vis April-July 2015

(Qty: '000' Tonnes)

Name of Undertaking/Unit	July,2016			July,2015			Cumulative (April - July)					
	Prorated Installed Capacity	Actual Crude T'put *	% Utilisation of Installed Capacity	Prorated Installed Capacity	Actual Crude T'put	% Utilisation of Installed Capacity	2016-17			2015-16		
							Prorated Installed Capacity	Actual Crude T'put *	% Utilisation of Installed Capacity	Prorated Installed Capacity	Actual Crude T'put **	% Utilisation of Installed Capacity
(1)	(2)	(3)	(4)	(5)	(6)	(7)	(8)	(9)	(10)	(11)	(12)	(13)
<b>A. Public Sector</b>	<b>11471.00</b>	<b>11811.69</b>	<b>102.97</b>	<b>10170.00</b>	<b>10053.77</b>	<b>98.86</b>	<b>45145.00</b>	<b>45614.25</b>	<b>101.04</b>	<b>40022.00</b>	<b>40642.18</b>	<b>101.55</b>
1. IOC, Guwahati	85.00	85.65	100.76	85.00	84.60	99.53	334.00	301.66	90.32	333.00	366.66	110.11
2. IOC, Barauni	510.00	576.50	113.04	508.00	533.94	105.11	2005.00	2259.48	112.69	2000.00	2076.72	103.84
3. IOC, Gujarat	1164.00	1273.44	109.40	1160.00	1256.24	108.30	4579.00	4962.19	108.37	4567.00	4240.61	92.85
4. IOC, Haldia	637.00	659.37	103.51	635.00	663.36	104.47	2507.00	2746.55	109.56	2500.00	2640.18	105.61
5. IOC, Mathura	679.00	754.92	111.18	678.00	757.26	111.69	2674.00	3162.96	118.29	2667.00	2864.57	107.41
6. IOC, Digboi	55.00	23.70	43.09	55.00	49.06	89.20	217.00	164.48	75.80	217.00	184.78	85.15
7. IOC, Panipat	1274.00	1400.07	109.90	1270.00	1191.24	93.80	5014.00	5458.66	108.87	5000.00	5063.13	101.26
8. IOC, Bongaigaon	200.00	214.85	107.43	199.00	213.41	107.24	785.00	840.65	107.09	783.00	880.51	112.45
9. IOC, Paradip	1274.00	697.35	54.74	0.00	0.00	0.00	5014.00	1886.88	37.63	0.00	0.00	0.00
<b>Total IOC</b>	<b>5877.00</b>	<b>5685.86</b>	<b>96.75</b>	<b>4591.00</b>	<b>4749.11</b>	<b>103.44</b>	<b>23130.00</b>	<b>21783.51</b>	<b>94.18</b>	<b>18067.00</b>	<b>18317.17</b>	<b>101.38</b>
10. BPCL, Mumbai	1019.00	1210.38	118.78	1016.00	1099.24	108.19	4011.00	4688.43	116.89	4000.00	4455.87	111.40
11. BPCL, Kochi	807.00	922.79	114.35	805.00	928.30	115.32	3175.00	3647.14	114.87	3167.00	3653.24	115.35
<b>Total BPCL</b>	<b>1826.00</b>	<b>2133.17</b>	<b>116.82</b>	<b>1821.00</b>	<b>2027.54</b>	<b>111.34</b>	<b>7186.00</b>	<b>8335.57</b>	<b>116.00</b>	<b>7167.00</b>	<b>8109.11</b>	<b>113.15</b>
12. HPCL, Mumbai	552.00	689.35	124.88	551.00	689.87	125.20	2173.00	2751.76	126.63	2167.00	2313.07	106.74
13. HPCL, Visakh	705.00	731.34	103.74	703.00	466.23	66.32	2774.00	3147.97	113.48	2767.00	2600.84	93.99
<b>Total HPCL</b>	<b>1257.00</b>	<b>1420.68</b>	<b>113.02</b>	<b>1254.00</b>	<b>1156.09</b>	<b>92.19</b>	<b>4947.00</b>	<b>5899.72</b>	<b>119.26</b>	<b>4933.00</b>	<b>4913.91</b>	<b>99.61</b>
14. CPCL, Manali	892.00	947.86	106.26	889.00	707.34	79.57	3510.00	3451.71	98.34	3500.00	3420.21	97.72
15. CPCL, CBR	85.00	48.35	56.88	85.00	49.10	57.76	334.00	187.14	56.03	333.00	179.59	53.93
<b>Total CPCL</b>	<b>977.00</b>	<b>996.21</b>	<b>101.97</b>	<b>974.00</b>	<b>756.43</b>	<b>77.66</b>	<b>3844.00</b>	<b>3638.85</b>	<b>94.66</b>	<b>3833.00</b>	<b>3599.80</b>	<b>93.92</b>
16. NRL, Numaligarh	255.00	236.90	92.90	254.00	252.56	99.43	1003.00	924.58	92.18	1000.00	665.63	66.56
17. MRPL, Mangalore	1274.00	1331.96	104.55	1270.00	1106.76	87.15	5014.00	5004.13	99.80	5000.00	5017.57	100.35
18. ONGC, Tatipaka	6.00	6.93	115.42	6.00	5.28	88.01	22.00	27.89	126.77	22.00	18.99	86.30
<b>B. Joint Venture Sector</b>	<b>1274.00</b>	<b>1410.45</b>	<b>110.71</b>	<b>1270.00</b>	<b>1553.20</b>	<b>122.30</b>	<b>5014.00</b>	<b>5836.50</b>	<b>116.40</b>	<b>5000.00</b>	<b>5444.97</b>	<b>108.90</b>
19. BORL, Bina	510.00	501.85	98.40	508.00	631.08	124.23	2005.00	2184.22	108.94	2000.00	1804.81	90.24
20. HMEL, GGSR, Bhatinda	764.00	908.60	118.93	762.00	922.12	121.01	3008.00	3652.28	121.42	3000.00	3640.16	121.34
<b>C. Private Sector</b>	<b>6795.00</b>	<b>7998.79</b>	<b>117.72</b>	<b>6776.00</b>	<b>7061.52</b>	<b>104.21</b>	<b>26740.00</b>	<b>30043.37</b>	<b>112.35</b>	<b>26667.00</b>	<b>28858.76</b>	<b>108.22</b>
21. RIL, Jamnagar	2803.00	2814.02	100.39	2795.00	2815.98	100.75	11030.00	11128.80	100.90	11000.00	10293.94	93.58
22. RIL, SEZ	2293.00	3424.51	149.35	2287.00	2490.21	108.89	9025.00	11936.79	132.26	9000.00	11637.66	129.31
<b>Total RIL</b>	<b>5096.00</b>	<b>6238.53</b>	<b>122.42</b>	<b>5082.00</b>	<b>5306.19</b>	<b>104.41</b>	<b>20055.00</b>	<b>23065.59</b>	<b>115.01</b>	<b>20000.00</b>	<b>21931.61</b>	<b>109.66</b>
23. EOL, Vadinar	1699.00	1760.26	103.61	1694.00	1755.33	103.62	6685.00	6977.78	104.38	6667.00	6927.16	103.90
<b>TOTAL(A+B+C)</b>	<b>19540.00</b>	<b>21220.94</b>	<b>108.60</b>	<b>18216.00</b>	<b>18668.48</b>	<b>102.48</b>	<b>76899.00</b>	<b>81494.12</b>	<b>105.98</b>	<b>71689.00</b>	<b>74945.91</b>	<b>104.54</b>

\*: Provisional. \*\*: Revised

## MINISTRY OF PETROLEUM &amp; NATURAL GAS

## Production of Petroleum Products during the month of July 2016 and cumulatively for the period April-July 2016 vis-à-vis April-July 2015

(Qty: '000' Tonnes)

Name of Undertaking/Unit	Planned production during the month	Production during the			Cumulative Production			% variation over last year		% variation during the month under review over planned production
		Month under review *	Corresponding month of last year	Preceding month of current year **	(April-July)			During the month under review	Upto the end of the period	
					Planned production during current year	Actual production during current year*	Actual production during corresponding period of last year**			
(1)	(2)	(3)	(4)	(5)	(5)	(6)	(7)	(8)	(9)	(10)
<b>I. Refinery</b>										
<b>A. Public Sector</b>	<b>10392.748</b>	<b>10969.204</b>	<b>9495.088</b>	<b>10532.419</b>	<b>31351.536</b>	<b>42734.393</b>	<b>38203.866</b>	<b>15.53</b>	<b>11.86</b>	<b>5.55</b>
1. IOC, Guwahati	87.330	99.489	116.416	94.649	257.830	390.520	424.423	-14.54	-7.99	13.92
2. IOC, Barauni	488.465	499.726	486.045	484.042	1433.826	2023.606	1923.370	2.81	5.21	2.31
3. IOC, Gujarat	1167.006	1189.578	1174.530	1159.326	3511.937	4667.710	4014.272	1.28	16.28	1.93
4. IOC, Haldia	607.704	602.840	621.512	624.805	1883.094	2464.449	2427.234	-3.00	1.53	-0.80
5. IOC, Mathura	700.333	717.610	721.830	789.569	2286.635	3030.105	2803.068	-0.58	8.10	2.47
6. IOC, Digboi	15.957	21.747	49.833	49.312	167.315	166.309	177.510	-56.36	-6.31	36.29
7. IOC, Panipat	1329.575	1370.881	1166.616	1337.605	3907.706	5478.284	5031.577	17.51	8.88	3.11
8. IOC, Bongaigaon	178.010	179.482	203.282	179.604	537.588	735.268	791.532	-11.71	-7.11	0.83
9. IOC, Paradip	461.500	513.098	0.000	255.095	932.850	1546.456	0.000	-	-	11.18
<b>Total IOC</b>	<b>5035.879</b>	<b>5194.451</b>	<b>4540.064</b>	<b>4974.007</b>	<b>14918.451</b>	<b>20502.707</b>	<b>17592.986</b>	<b>14.41</b>	<b>16.54</b>	<b>3.15</b>
10. BPCL, Mumbai	1134.090	1158.648	1067.880	1124.250	3343.997	4500.032	4261.588	8.50	5.60	2.17
11. BPCL, Kochi	817.069	874.831	864.039	846.361	2422.357	3437.624	3451.767	1.25	-0.41	7.07
<b>Total BPCL</b>	<b>1951.159</b>	<b>2033.479</b>	<b>1931.919</b>	<b>1970.611</b>	<b>5766.354</b>	<b>7937.656</b>	<b>7713.355</b>	<b>5.26</b>	<b>2.91</b>	<b>4.22</b>
12. HPCL, Mumbai	632.768	654.643	654.316	573.589	1857.469	2546.828	2055.533	0.05	23.90	3.46
13. HPCL, Visakh	653.479	682.607	386.582	747.752	2181.801	2897.423	2317.909	76.57	25.00	4.46
<b>Total HPCL</b>	<b>1286.247</b>	<b>1337.250</b>	<b>1040.898</b>	<b>1321.341</b>	<b>4039.270</b>	<b>5444.251</b>	<b>4373.442</b>	<b>28.47</b>	<b>24.48</b>	<b>3.97</b>
14. CPCL, Manali	832.745	876.465	648.922	835.531	2307.694	3179.281	3146.504	35.06	1.04	5.25
15. CPCL, CBR	51.457	48.799	49.848	33.607	150.208	187.885	182.427	-2.10	2.99	-5.17
<b>Total CPCL</b>	<b>884.202</b>	<b>925.264</b>	<b>698.770</b>	<b>869.138</b>	<b>2457.902</b>	<b>3367.166</b>	<b>3328.931</b>	<b>32.41</b>	<b>1.15</b>	<b>4.64</b>
16. NRL, Numaligarh	230.261	239.068	248.021	230.791	679.908	918.995	638.392	-3.61	43.95	3.82
17. MRPL, Mangalore	1001.100	1232.961	1030.225	1159.437	3480.400	4536.825	4538.205	19.68	-0.03	23.16
18. ONGC, Tatipaka	3.900	6.731	5.191	7.094	8.920	26.792	18.555	29.67	44.39	72.58
<b>B. Joint Venture Sector</b>	<b>1233.615</b>	<b>1325.946</b>	<b>1502.911</b>	<b>1324.441</b>	<b>3659.889</b>	<b>5460.379</b>	<b>5081.851</b>	<b>-11.77</b>	<b>7.45</b>	<b>7.48</b>
19. BOREL, Bina	484.100	420.620	605.141	477.599	1452.300	1925.232	1613.223	-30.49	19.34	-13.11
20. HMEL, GGSR, Bhatinda	749.515	905.326	897.770	846.842	2207.589	3535.147	3468.628	0.84	1.92	20.79
<b>C. Private Sector</b>	<b>7834.400</b>	<b>8109.909</b>	<b>7948.565</b>	<b>8066.918</b>	<b>21927.467</b>	<b>31224.724</b>	<b>29881.519</b>	<b>2.03</b>	<b>4.50</b>	<b>3.52</b>
21. RIL, Jamnagar	2867.485	2773.075	2867.485	2885.195	7498.764	11115.720	10366.250	-3.29	7.23	-3.29
22. RIL, SEZ	3332.723	3665.057	3332.723	3481.835	9531.065	13376.783	12863.788	9.97	3.99	9.97
<b>Total RIL</b>	<b>6200.208</b>	<b>6438.132</b>	<b>6200.208</b>	<b>6367.030</b>	<b>17029.829</b>	<b>24492.503</b>	<b>23230.037</b>	<b>3.84</b>	<b>5.43</b>	<b>3.84</b>
23. EOL, Vadinar	1634.192	1671.777	1748.357	1699.888	4897.638	6732.221	6651.482	-4.38	1.21	2.30
<b>TOTAL(A+B+C)</b>	<b>19460.763</b>	<b>20405.059</b>	<b>18946.564</b>	<b>19923.778</b>	<b>56938.892</b>	<b>79419.496</b>	<b>73167.237</b>	<b>7.70</b>	<b>8.55</b>	<b>4.85</b>
<b>II. Fractionators</b>					0.000					
ONGC	252.501	264.140	204.464	250.269	628.401	997.563	814.295	29.19	22.51	4.61
OIL	3.700	3.035	3.195	1.481	8.300	10.940	12.501	-5.01	-12.49	-17.97
GAIL	85.700	95.703	67.989	81.972	254.071	351.256	346.328	40.76	1.42	11.67
<b>D. Total Fractionators</b>	<b>341.901</b>	<b>362.878</b>	<b>275.648</b>	<b>333.722</b>	<b>890.773</b>	<b>1359.759</b>	<b>1173.124</b>	<b>31.65</b>	<b>15.91</b>	<b>6.14</b>
<b>Grand Total (A+B+C+D)</b>	<b>19802.663</b>	<b>20767.936</b>	<b>19222.212</b>	<b>20257.500</b>	<b>57829.665</b>	<b>80779.254</b>	<b>74340.361</b>	<b>8.04</b>	<b>8.66</b>	<b>4.87</b>

Note: Totals may not tally due to rounding off figures.

\*: Provisional. \*\*: Revised