

Government of India
Ministry of Petroleum and Natural Gas
Economics & Statistics Division

New Delhi

Dated the 21st February, 2017

Monthly Production Report
January 2017

Crude Oil

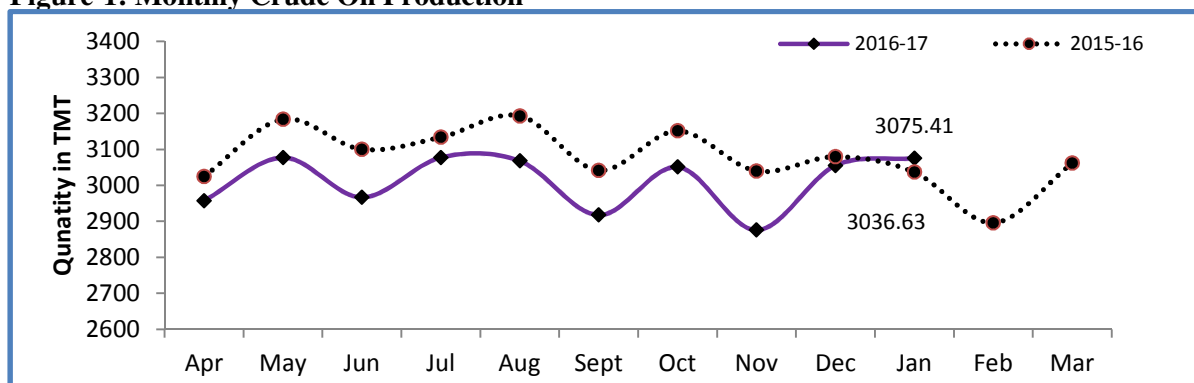
1. Crude oil production¹ during January, 2017 was 3075.41 TMT which is 5.57% lower than target but 1.28% higher when compared with January 2016. Cumulative crude oil production during April, 2016 - January, 2017 was 30120.74 TMT which is 2.31% and 2.79% lower than target and production during corresponding period of last year respectively. Unit-wise and state-wise crude oil production is given at Annexure-I. Unit-wise crude oil production for the month of January, 2017 and cumulatively for the period April, 2016 - January, 2017 vis-à-vis same period of last year has been shown in Table-1 and month-wise in Figure-1.

Table-1: Crude Oil Production (in TMT)

Oil Company	Target	January (Month)				April-January (Cumulative)			
	2016-17 (Apr-Mar)	2016-17		2015-16	% over last year	2016-17		2015-16	% over last year
		Target	Prod.*	Prod.		Target	Prod.*	Prod.	
ONGC	22766.00	2018.57	1916.25	1831.39	104.63	18891.37	18545.34	18710.69	99.12
OIL	3480.00	321.77	274.06	260.36	105.26	2834.98	2704.51	2710.97	99.76
PSC Fields	10839.32	916.44	885.10	944.88	93.67	9105.89	8870.89	9562.84	92.76
Total	37085.32	3256.78	3075.41	3036.63	101.28	30832.24	30120.74	30984.50	97.21

*: Provisional

Figure-1: Monthly Crude Oil Production



¹ Including condensate

Unit-wise production details with reasons for shortfall have been given in following sub-sections:

1.1 Crude oil production by ONGC during January, 2017 was 1916.25 TMT which is 5.07% lower than the monthly target but 4.63% higher when compared with January, 2016. Cumulative crude oil production by ONGC during April, 2016 - January, 2017 was 18545.34 TMT which is 1.83% lower than target for the period and 0.88% lower than production during corresponding period of last year. Reasons for shortfall in production are as under:

- ❖ Delay in deployment of MOPU-Sagar Samrat.
- ❖ Delay in implementation of “Development of Western Periphery of MHS (ZC)” Project.
- ❖ Natural decline & increase in water cut in matured fields of Western Offshore.

1.2 Crude oil production by OIL during January, 2017 was 274.06 TMT which is 14.83% lower than monthly target but 5.26% higher than production in January, 2016. Cumulative crude oil production by OIL during April, 2016 - January, 2017 was 2704.51 TMT which is 4.60% lower than target for the period and 0.24% lower than production during corresponding period of last year. Shortfall in production was mainly due to less than planned contribution from high producing areas like Greater Hapjan, Greater Chandmari fields & Naharkatiya fields on account of rise in water cut and less than envisaged contribution from newly drilled wells.

1.3 Crude oil production by Pvt/JVs during January, 2017 was 885.10 TMT which is 3.42% lower than the monthly target and 6.33% lower than January, 2016. Cumulative crude oil production by Pvt/JVs during April, 2016 - January, 2017 was 8870.89 TMT which is 2.58% lower than target for the period and 7.24% lower than the production during corresponding period of last year. Reasons for shortfall in production are as under:

- ❖ RJ-ON-90/1: Liquid cut back in Mangala wells for rectification of 14" MPT to CPF feed water line leak from 27-28 January, 2017. NI wells shutdown for 3-phase separator line modification on 27-28.01.2017. Few high water cut wells closed at Mangala, poor reservoir performance of Bhagyam.
- ❖ Natural Decline in Ravva & CB-OS/2.
- ❖ Closure of 1 well in MA field in KG-DWN-98/3.

Natural Gas

2 Natural gas production during January, 2016 was 2738.37 MMSCM which is 10.19% lower than the target for the month but 11.89% higher when compared with January, 2016. Cumulative natural gas production during April, 2016 - January, 2017 was 26623.75 MMSCM which is 5.59% lower than target for the period and 1.92% lower than the production during corresponding period of last year. Unit-wise and state-wise natural gas

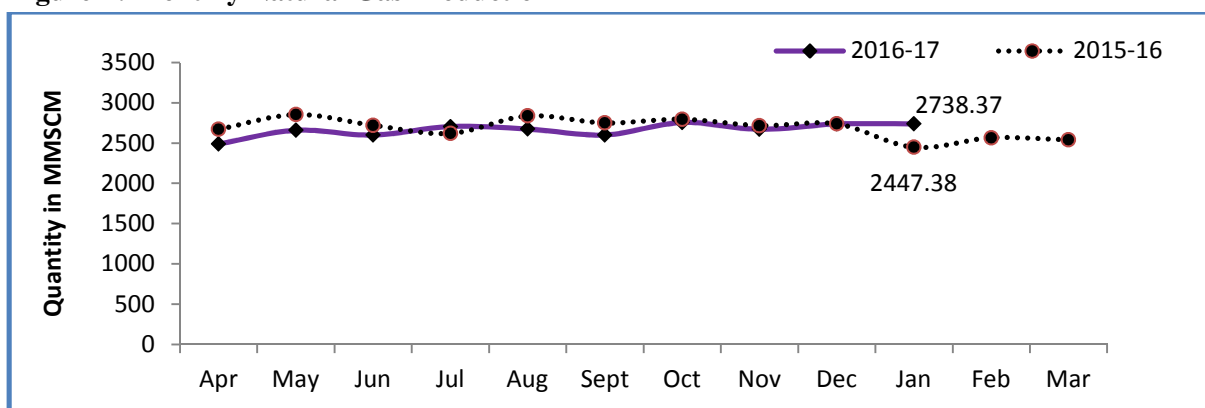
production is given at Annexure-II. Unit-wise natural gas production for the month of January, 2017 and cumulatively for the period April, 2016 -January, 2017 vis-à-vis same period of last year has been shown in Table-2 and month-wise in Figure-2.

Table-2: Natural Gas Production (MMSCM)

Oil Company	Target	January (Month)				April-January (Cumulative)			
	2016-17 (Apr-Mar)	2016-17		2015-16	% over last year	2016-17		2015-16	% over last year
		Target	Prod.*	Prod.		Target	Prod.*	Prod.	
ONGC	22743.43	2040.44	1922.15	1530.86	125.56	18764.52	18342.44	17803.01	103.03
OIL	2950.03	234.38	248.79	245.72	101.25	2494.90	2460.35	2365.78	104.00
PSC Fields	8425.44	774.25	567.43	670.80	84.59	6941.95	5820.97	6975.74	83.45
Total	34118.90	3049.06	2738.37	2447.38	111.89	28201.37	26623.75	27144.53	98.08

*: Provisional

Figure-2: Monthly Natural Gas Production



- 2.1 Natural gas production by ONGC during January, 2017 was 1922.15 MMSCM which is 5.80% lower than the monthly target but 25.56% higher when compared with January, 2016. Cumulative natural gas production by ONGC during April, 2016 - January, 2017 was 18342.44 MMSCM which is 2.25% lower than the cumulative target but 3.03% higher than the production during the corresponding period of the last year. Shortfall in production was mainly due to decline in reservoir pressure in Bassein field and less production from Daman & C-26 Cluster due to evacuation constraint as export lines to TCPP platform are not yet completed.
- 2.2 Natural gas production by OIL during January, 2017 was 248.79 MMSCM which is 6.15% higher than the monthly target and 1.25% higher than January, 2016. Cumulative natural gas production by OIL during April, 2016 - January, 2017 was 2460.35 MMSCM which is 1.38% lower than the cumulative target but 4% higher than the production during the corresponding period of last year.
- 2.3 Natural gas production by Pvt/JVs during January, 2017 was 567.43 MMSCM which is 26.71% lower than the monthly target and 15.41% lower when compared with January,

2016. Cumulative natural gas production by Pvt/JVs during April, 2016 - January, 2017 was 5820.97 MMSCM which is 16.15% lower than the cumulative target and 16.55% lower than the production during the corresponding period of last year. Reasons for shortfall in production are as under:

- ❖ Underperformance of wells in KG- OSN-2001/3.
- ❖ Underperformance of Sohagpur West CBM block extended dewatering hampering production in Raniganj East CBM block.
- ❖ Closure of 2 wells in D1D3 field in KG-DWN-98/3.
- ❖ RJ-ON-90/1: Liquid cut back in Mangala wells for rectification of 14" MPT to CPF feed water line leak on 27-28.01.2017. NI wells shutdown for 3-phase separator line modification on 27-28.01.2017. Few high water cut wells closed at Mangala, poor reservoir performance of Bhagyam etc.
- ❖ RJ-ON/6: Increase in Water cut in few wells.

Refinery Production (in terms of crude oil processed)

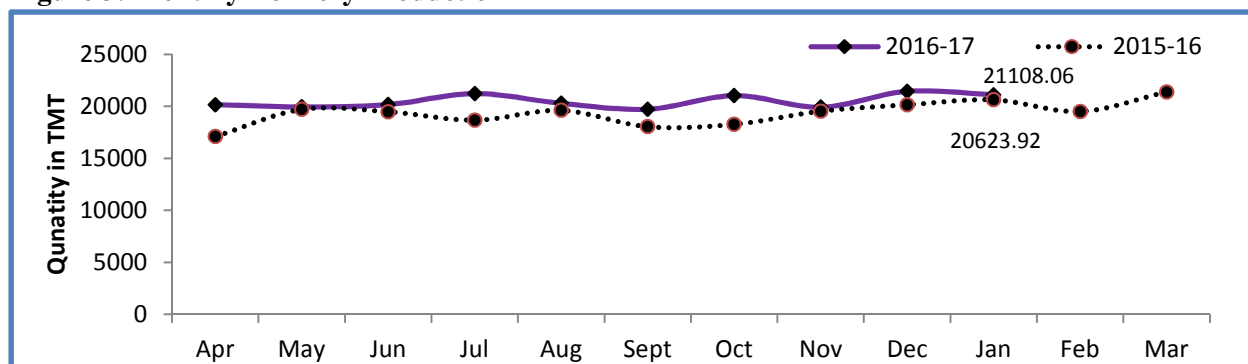
- 3 Refinery production during January, 2017 was 21108.06 TMT which is 0.22% higher than the target for the month but 1.52% lower when compared with January, 2016. Cumulative production during April, 2016-January, 2017 was 204994.09 TMT which is 1.96% higher than the target for the period and 6.78% higher than the production during corresponding period of last year. Unit-wise production is given at Annexure-III. Company-wise production for the month of January, 2017 and cumulatively for the period April, 2016 - January, 2017 vis-à-vis same period of last year has been shown in Table-3 and month-wise in Figure-3.

Table 3: Refinery Production (TMT)

Oil Company	Target	January (Month)				April-January (Cumulative)			
	2016-17 (Apr-Mar)	2016-17		2015-16	% over last year	2016-17		2015-16	% over last year
		Target	Prod.*	Prod.		Target	Prod.*	Prod.	
PSUS	135565.03	11948.45	11760.82	12111.59	97.10	113391.74	114517.58	104069.09	110.04
IOCL	65100.00	5707.98	5470.07	5695.12	96.05	54160.10	53574.03	47368.64	113.10
BPCL	25250.15	2581.83	2197.16	2061.90	106.56	21190.62	21536.14	19993.22	107.72
HPCL	16800.29	1372.31	1572.11	1605.55	97.92	14107.77	14767.94	14139.61	104.44
CPCL	10250.00	611.11	861.78	951.05	90.61	8902.70	9028.48	7762.51	116.31
NRL	2670.00	221.17	282.93	233.93	120.95	2248.67	2243.50	2081.11	107.80
MRPL	15450.00	1450.00	1369.06	1557.27	87.91	12745.00	13296.57	12671.53	104.93
ONGC	44.59	4.05	7.70	6.77	113.75	36.88	70.93	52.47	135.19
JVs	15000.00	1321.02	1519.98	1419.31	107.09	12807.46	14216.89	14338.81	99.15
BORL	6000.00	525.00	582.81	601.41	96.91	4950.00	5260.73	5261.66	99.98
HMEL	9000.00	796.02	937.17	817.90	114.58	7857.46	8956.16	9077.15	98.67
Private	89852.65	7793.30	7827.26	7902.94	99.04	74857.77	76259.62	73569.37	103.66
RIL	69561.01	6121.40	6055.06	6121.40	98.92	57909.93	58696.89	57909.93	101.36
EOL	20291.64	1671.90	1772.19	1781.54	99.48	16947.84	17562.73	15659.44	112.15
TOTAL	240417.68	21062.76	21108.06	21433.83	98.48	201056.97	204994.09	191977.27	106.78

*: Provisional

Figure 3: Monthly Refinery Production



3.1 PSU Refineries' production during January, 2017 was 11760.82 TMT which is 1.57% lower than the target for the month and 2.90% lower than the production achieved in the corresponding month of last year. Cumulative production by PSU refineries during April, 2016 - January, 2017 was 114517.58 TMT which is 0.99% higher than the target for the period and 10.04% higher than the production during corresponding period of last year. Reasons for shortfall of refinery production in some PSU refineries are as under:

- ❖ IOCL, Gujarat: Planned shutdown from Dec'16 to Jan'17 wherein the replacement catalyst failed & new catalyst had to be procured.
- ❖ IOCL, Paradip: Throughput is lower due to coke upliftment issue.
- ❖ IOCL, Haldia: Throughput is lower due to VGO stock build-up.
- ❖ IOCL, Digboi / Guwahati: Lower availability of Assam crude.
- ❖ BPCL, Mumbai: Throughput lower than target due to failure of DHDS- RGC motor
- ❖ BPCL, Kochi: Throughput lower than target due to total power failure on 10.01.2017.
- ❖ MRPL, Mangalore: Throughput lower due to load restrictions in CDU -1 heater and CDU-3 Vacuum heater.

3.2 Production in JV refineries during January, 2017 was 1519.98 TMT which is 15.06% higher than the target for the month and 7.09% higher than the production achieved in the corresponding month of last year. Cumulative production by JVs refineries during April, 2016 - January, 2017 was 14216.89 TMT which is 11% higher than the target for the period but 0.85% lower than the production during corresponding period of last year.

3.3 Production in private refineries during January, 2017 was 7827.26 TMT which is 0.44% higher than the target for the month but 0.96% lower when compared with January, 2016. Cumulative production by private refineries during April, 2016 - January, 2017 was 76259.62 TMT which is 1.87% higher than the target for the period and 3.66% higher than the production during corresponding period of last year.

3.4 Refinery-wise details of the capacity utilization and production of petroleum products during the month of January, 2017 and cumulatively for the period April, 2016 - January, 2017 vis-à-vis April, 2015 - January, 2016 are given at Annexures-IV and V respectively.

Annexure-I

(Para 1)

MINISTRY OF PETROLEUM & NATURAL GAS

Crude Oil Production during the month of January, 2017 and cumulatively for the period April-January, 2016-17 vis-a-vis April-January, 2015-16

(in TMT)

Name of Undertaking/Unit/State	Planned production during the month	Production during the			Cumulative Production			% variation over last year		% variation during the month under review over planned production
		Month under review *	Corresponding month of last year **	Preceding month of current year	(April-January)			During the month under review	Upto the end of the period	
					Planned production during current year	Actual production during current year *	Actual production during corresponding period of last year			
(1)	(2)	(3)	(4)	(5)	(5)	(6)	(7)	(8)	(9)	(10)
1. ONGC	2018.571	1916.250	1831.390	1904.597	18891.368	18545.340	18710.687	4.63	-0.88	-5.07
Onshore	510.074	511.143	492.810	509.030	4962.784	4954.228	4842.598	3.72	2.31	0.21
Andhra Pradesh	24.656	23.246	24.476	24.118	234.754	226.406	249.267	-5.03	-9.17	-5.72
Assam ^	86.463	81.717	80.277	82.003	826.641	797.552	806.241	1.79	-1.08	-5.49
Gujarat	378.632	385.023	367.759	382.664	3710.649	3736.034	3579.857	4.69	4.36	1.69
Tamil Nadu	20.323	21.157	20.298	20.245	190.740	194.236	207.233	4.23	-6.27	4.10
Offshore	1508.497	1405.107	1338.580	1395.567	13928.584	13591.112	13868.089	4.97	-2.00	-6.85
Eastern Offshore	3.271	1.626	2.963	1.298	20.202	13.215	22.423	-45.12	-41.06	-50.29
Western Offshore	1378.769	1290.078	1253.583	1277.463	12735.274	12446.723	12764.911	2.91	-2.49	-6.43
Condensates	126.457	113.403	82.034	116.806	1173.108	1131.174	1080.755	38.24	4.67	-10.32
2. OIL (Onshore)	321.771	274.056	260.361	280.590	2834.981	2704.513	2710.973	5.26	-0.24	-14.83
Assam	321.247	273.415	259.750	279.949	2829.259	2698.075	2706.424	5.26	-0.31	-14.89
Arunachal Pradesh	0.524	0.641	0.611	0.641	5.722	6.438	4.549	4.91	41.53	22.33
3. DGH (Private / JVs)	916.438	885.101	944.883	869.886	9105.892	8870.889	9562.836	-6.33	-7.24	-3.42
Onshore	747.665	702.538	743.896	692.875	7322.601	7063.879	7403.406	-5.56	-4.59	-6.04
Arunachal Pradesh	4.504	3.884	4.422	4.005	43.595	40.073	42.269	-12.17	-5.20	-13.77
Gujarat	17.144	11.039	12.346	10.952	151.718	115.008	125.568	-10.59	-8.41	-35.61
Rajasthan	716.706	682.151	725.890	672.829	7074.616	6873.884	7231.109	-6.03	-4.94	-4.82
Tamil Nadu	9.311	5.464	1.238	5.089	52.671	34.914	4.460	-	-	-
Offshore	168.774	182.563	200.987	177.011	1783.291	1807.010	2159.430	-9.17	-16.32	8.17
Eastern Offshore	78.035	81.830	83.127	79.189	804.200	809.307	1069.119	-1.56	-24.30	4.86
Gujarat Offshore	23.569	32.558	36.010	31.025	290.991	322.064	344.583	-9.59	-6.54	38.14
Western Offshore	67.170	68.175	81.850	66.797	688.100	675.639	745.728	-16.71	-9.40	1.50
GRAND TOTAL (1+2+3)	3256.780	3075.407	3036.634	3055.073	30832.241	30120.742	30984.496	1.28	-2.79	-5.57
Onshore	1579.510	1487.737	1497.067	1482.495	15120.366	14722.620	14956.977	-0.62	-1.57	-5.81
Offshore	1677.271	1587.670	1539.567	1572.578	15711.875	15398.122	16027.519	3.12	-3.93	-5.34

Note: Totals may not tally due to rounding off.

*: Provisional.

**: Revised

^: Includes crude oil production of Tripura

Reasons for shortfall are indicated in the note.

MINISTRY OF PETROLEUM & NATURAL GAS

Natural Gas Production during the month of January, 2017 and cumulatively for the period April-January, 2016-17 vis-a-vis April-January, 2015-16

(in MMSCM)

Name of Undertaking/Unit/State	Planned production during the month	Production during the			Cumulative Production (April-January)			% variation over last year		% variation during the month under review over planned production
		Month under review *	Corresponding month of last year **	Preceding month of current year **	Planned production during current year	Actual production during current year *	Actual production during corresponding period of last year **	During the month under review	Upto the end of the period	
(1)	(2)	(3)	(4)	(5)	(5)	(6)	(7)	(8)	(9)	(10)
1. ONGC	2040.436	1922.152	1530.864	1926.761	18764.520	18342.437	17803.006	25.56	3.03	-5.80
Onshore	454.285	461.192	395.163	448.196	4373.856	4280.552	3946.043	16.71	8.48	1.52
Andhra Pradesh	80.237	79.234	55.218	78.312	651.687	715.453	499.932	43.49	43.11	-1.25
Assam	36.801	36.373	32.663	35.063	354.955	359.304	335.502	11.36	7.09	-1.16
Gujarat	119.067	136.452	116.490	131.986	1215.000	1219.528	1159.213	17.14	5.20	14.60
Rajasthan	0.425	0.854	0.038	0.254	4.192	3.784	4.587	2123.96	-17.51	101.10
Tamil Nadu	91.266	88.276	73.951	88.167	928.590	810.185	847.447	19.37	-4.40	-3.28
Tripura	126.489	120.003	116.803	114.414	1219.431	1172.298	1099.363	2.74	6.63	-5.13
Offshore	1586.151	1460.960	1135.701	1478.565	14390.664	14061.885	13856.962	28.64	1.48	-7.89
Eastern Offshore	61.882	57.043	21.955	57.279	476.706	363.524	182.644	159.81	99.03	-7.82
Western Offshore	1524.269	1403.917	1113.746	1421.286	13913.958	13698.361	13674.318	26.05	0.18	-7.90
2. OIL	234.379	248.793	245.717	246.496	2494.898	2460.348	2365.779	1.25	4.00	6.15
Assam	218.443	229.214	231.485	223.350	2311.372	2253.543	2187.326	-0.98	3.03	4.93
Arunachal Pradesh	1.056	1.005	0.996	1.004	11.646	9.947	9.504	0.90	4.66	-4.83
Rajasthan	14.880	18.574	13.236	22.142	171.880	196.858	168.948	40.33	16.52	24.83
3. DGH (Private / JVs)	774.246	567.428	670.802	563.557	6941.949	5820.968	6975.741	-15.41	-16.55	-26.71
Onshore	114.583	89.328	112.404	88.614	1034.649	971.034	1040.914	-20.53	-6.71	-22.04
Assam	7.024	0.000	0.000	0.000	14.047	0.000	0.000	0.00	0.00	0.00
Arunachal Pradesh	0.762	1.502	1.392	1.512	7.371	12.902	15.502	7.90	-16.77	97.11
Gujarat	4.975	7.206	7.334	7.187	63.931	75.440	76.545	-1.75	-1.44	44.85
Rajasthan	100.790	79.929	103.560	79.201	943.380	878.520	948.476	-22.82	-7.38	-20.70
Tamil Nadu	1.032	0.691	0.118	0.714	5.920	4.172	0.391	-	-	-
CBM	150.246	53.583	33.195	53.135	949.833	474.228	323.827	61.42	46.44	-64.34
Jharkhand (CBM)	0.275	0.322	0.175	0.263	2.717	2.503	1.596	84.00	56.83	16.98
Madhya Pradesh (CBM)	72.280	0.783	0.141	0.755	327.620	4.760	0.980	455.32	385.71	-98.92
West Bengal (CBM)	77.691	52.478	32.879	52.117	619.496	466.965	321.251	59.61	45.36	-32.45
Offshore	509.417	424.517	525.203	421.808	4957.467	4375.706	5611.000	-19.17	-22.02	-16.67
Eastern Offshore	348.952	252.073	335.037	260.314	3447.905	2711.483	3734.689	-24.76	-27.40	-27.76
Gujarat Offshore	3.325	7.162	5.888	7.106	32.822	69.274	56.106	21.64	23.47	115.39
Western Offshore	157.140	165.282	184.278	154.388	1476.740	1594.949	1820.205	-10.31	-12.38	5.18
TOTAL (1+2+3)	3049.061	2738.373	2447.383	2736.814	28201.367	26623.753	27144.525	11.89	-1.92	-10.19
CBM	150.246	53.583	33.195	53.135	949.833	474.228	323.827	61.42	46.44	-64.34
Onshore	803.247	799.313	753.285	783.306	7903.403	7711.934	7352.736	6.11	4.89	-0.49
Offshore	2095.567	1885.477	1660.904	1900.373	19348.131	18437.591	19467.962	13.52	-5.29	-10.03

Note: Totals may not tally due to rounding off. *: Provisional. **: Revised

CBM: Coal Bed Methane

Reasons for shortfall are indicated in the note.

MINISTRY OF PETROLEUM & NATURAL GAS

Refinery Production (in terms of crude oil processed) during the month of January, 2017 and cumulatively for the period April-January, 2016-17 vis-à-vis April-January, 2015-16

(in TMT)

Name of Undertaking/Unit	Planned production during the month	Production during the			Cumulative Production			% variation over last year		% variation during the month under review over planned production
		Month under review *	Corresponding month of last year	Preceding month of current year	(April-January)			During the month under review	Upto the end of the period	
					Planned production during current year	Actual production during current year *	Actual production during corresponding period of last year			
(1)	(2)	(3)	(4)	(5)	(5)	(6)	(7)	(8)	(9)	(10)
A. Public Sector	11948.452	11760.822	12111.586	12098.440	113391.740	114517.582	104069.085	-2.90	10.04	-1.57
1. IOC, Guwahati	83.000	65.235	40.265	71.244	827.400	717.038	781.081	62.01	-8.20	-21.40
2. IOC, Barauni	533.200	554.047	561.590	579.355	5186.397	5481.091	5471.557	-1.34	0.17	3.91
3. IOC, Gujarat	1084.964	1007.133	1188.978	1129.923	11277.729	11731.469	11373.873	-15.29	3.14	-7.17
4. IOC, Haldia	660.135	550.093	722.924	534.156	6519.850	6349.110	6479.566	-23.91	-2.01	-16.67
5. IOC, Mathura	682.999	786.215	770.797	761.365	7255.001	7678.684	7306.094	2.00	5.10	15.11
6. IOC, Digboi	52.000	44.508	43.004	45.141	529.000	438.026	458.801	3.50	-4.53	-14.41
7. IOC, Panipat	1324.038	1330.366	1357.204	1328.770	12681.981	12996.039	12639.725	-1.98	2.82	0.48
8. IOC, Bongaigaon	199.648	206.369	200.447	219.568	1969.344	2086.577	2048.031	2.95	1.88	3.37
9. IOC, Paradip	1088.000	926.100	809.909	1012.699	7913.400	6095.996	809.909	-	-	-14.88
Total IOC	5707.984	5470.066	5695.118	5682.221	54160.101	53574.030	47368.637	-3.95	13.10	-4.17
10. BPCL, Mumbai	1195.162	1137.954	1137.129	1262.540	11762.433	11934.601	11077.752	0.07	7.73	-4.79
11. BPCL, Kochi	1386.667	1059.207	924.766	1045.187	9428.183	9601.537	8915.465	14.54	7.70	-23.61
Total BPCL	2581.829	2197.161	2061.895	2307.727	21190.616	21536.138	19993.217	6.56	7.72	-14.90
12. HPCL, Mumbai	564.725	753.532	748.851	758.223	6644.975	7066.319	6541.684	0.63	8.02	33.43
13. HPCL, Visakh	807.589	818.578	856.699	861.976	7462.792	7701.619	7597.927	-4.45	1.36	1.36
Total HPCL	1372.314	1572.110	1605.550	1620.199	14107.767	14767.938	14139.610	-2.08	4.44	14.56
14. CPCL, Manali	560.000	820.377	895.457	706.655	8400.000	8586.101	7331.308	-8.38	17.12	46.50
15. CPCL, CBR	51.106	41.407	55.588	40.797	502.704	442.377	431.197	-25.51	2.59	-18.98
Total CPCL	611.106	861.784	951.045	747.452	8902.704	9028.478	7762.505	-9.39	16.31	41.02
16. NRL, Numaligarh	221.166	282.934	233.934	257.006	2248.668	2243.497	2081.110	20.95	7.80	27.93
17. MRPL, Mangalore	1450.000	1369.064	1557.272	1476.641	12745.000	13296.567	12671.534	-12.09	4.93	-5.58
18. ONGC, Tatipaka	4.053	7.703	6.772	7.194	36.884	70.935	52.472	13.75	35.19	90.04
B. Joint Venture Sector	1321.017	1519.979	1419.310	1570.986	12807.458	14216.892	14338.814	7.09	-0.85	15.06
19. BORL, Bina	525.000	582.805	601.412	623.733	4950.000	5260.732	5261.664	-3.09	-0.02	11.01
20. HMEL, GGSR, Bhatinda	796.017	937.174	817.898	947.253	7857.458	8956.160	9077.150	14.58	-1.33	17.73
C. Private Sector	7793.296	7827.257	7902.937	7772.042	74857.772	76259.618	73569.371	-0.96	3.66	0.44
21. RIL, Jamnagar	2840.777	2774.605	2840.777	2782.188	27034.877	27533.526	27034.877	-2.33	1.84	-2.33
22. RIL, SEZ	3280.618	3280.459	3280.618	3212.801	30875.053	31163.364	30875.053	0.00	0.93	0.00
Total RIL	6121.395	6055.064	6121.395	5994.989	57909.930	58696.890	57909.930	-1.08	1.36	-1.08
23. EOL, Vadinar	1671.901	1772.193	1781.542	1777.053	16947.842	17562.728	15659.441	-0.52	12.15	6.00
TOTAL(A+B+C)	21062.765	21108.058	21433.833	21441.468	201056.970	204994.092	191977.270	-1.52	6.78	0.22

Note: Totals may not tally due to rounding off. *: Provisional.

Reasons for shortfall are indicated in the note.

MINISTRY OF PETROLEUM & NATURAL GAS

(Para 3.4)

Refinery-wise Capacity Utilisation during the month of January, 2017 and cumulatively for the period April-January, 2016-17 vis-à-vis April-January, 2015-16

(in TMT)

Name of Undertaking/Unit	January,2017			January,2016			Cumulative (April - January)					
	Prorated Installed Capacity	Actual Crude T'put *	% Utilisation of Installed Capacity	Prorated Installed Capacity	Actual Crude T'put	% Utilisation of Installed Capacity	2016-17			2015-16		
							Prorated Installed Capacity	Actual Crude T'put *	% Utilisation of Installed Capacity	Prorated Installed Capacity	Actual Crude T'put	% Utilisation of Installed Capacity
(1)	(2)	(3)	(4)	(5)	(6)	(7)	(8)	(9)	(10)	(11)	(12)	(13)
A. Public Sector	11471.00	11760.82	102.53	10170.00	12111.59	119.09	113233.00	114517.58	101.13	100383.00	104069.09	103.67
1. IOC, Guwahati	85.00	65.24	76.75	85.00	40.27	47.37	838.00	717.04	85.57	836.00	781.08	93.43
2. IOC, Barauni	510.00	554.05	108.64	508.00	561.59	110.55	5030.00	5481.09	108.97	5016.00	5471.56	109.08
3. IOC, Gujarat	1164.00	1007.13	86.52	1160.00	1188.98	102.50	11485.00	11731.47	102.15	11454.00	11373.87	99.30
4. IOC, Haldia	637.00	550.09	86.36	635.00	722.92	113.85	6288.00	6349.11	100.97	6270.00	6479.57	103.34
5. IOC, Mathura	679.00	786.22	115.79	678.00	770.80	113.69	6707.00	7678.68	114.49	6689.00	7306.09	109.23
6. IOC, Digboi	55.00	44.51	80.92	55.00	43.00	78.19	545.00	438.03	80.37	543.00	458.80	84.49
7. IOC, Panipat	1274.00	1330.37	104.42	1270.00	1357.20	106.87	12575.00	12996.04	103.35	12541.00	12639.73	100.79
8. IOC, Bongaigaon	200.00	206.37	103.18	199.00	200.45	100.73	1970.00	2086.58	105.92	1965.00	2048.03	104.23
9. IOC, Paradip	1274.00	926.10	72.69	0.00	809.91	0.00	12575.00	6096.00	48.48	0.00	809.91	0.00
Total IOC	5877.00	5470.07	93.08	4591.00	5695.12	124.05	58014.00	53574.03	92.35	45315.00	47368.64	104.53
10. BPCL, Mumbai	1019.00	1137.95	111.67	1016.00	1137.13	111.92	10060.00	11934.60	118.63	10033.00	11077.75	110.41
11. BPCL, Kochi	807.00	1059.21	131.25	805.00	924.77	114.88	7964.00	9601.54	120.56	7943.00	8915.47	112.24
Total BPCL	1826.00	2197.16	120.33	1821.00	2061.90	113.23	18025.00	21536.14	119.48	17975.00	19993.22	111.23
12. HPCL, Mumbai	552.00	753.53	136.51	551.00	748.85	135.91	5449.00	7066.32	129.68	5434.00	6541.68	120.38
13. HPCL, Visakh	705.00	818.58	116.11	703.00	856.70	121.86	6958.00	7701.62	110.69	6939.00	7597.93	109.50
Total HPCL	1257.00	1572.11	125.07	1254.00	1605.55	128.03	12408.00	14767.94	119.02	12374.00	14139.61	114.27
14. CPCL, Manali	892.00	820.38	91.97	889.00	895.46	100.73	8803.00	8586.10	97.54	8779.00	7331.31	83.51
15. CPCL, CBR	85.00	41.41	48.71	85.00	55.59	65.40	838.00	442.38	52.79	836.00	431.20	51.58
Total CPCL	977.00	861.78	88.21	974.00	951.05	97.64	9641.00	9028.48	93.65	9615.00	7762.51	80.73
16. NRL, Numaligarh	255.00	282.93	110.95	254.00	233.93	92.10	2515.00	2243.50	89.20	2508.00	2081.11	82.98
17. MRPL, Mangalore	1274.00	1369.06	107.46	1270.00	1557.27	122.62	12575.00	13296.57	105.74	12541.00	12671.53	101.04
18. ONGC, Tatipaka	6.00	7.70	128.38	6.00	6.77	112.86	55.00	70.93	128.97	55.00	52.47	95.40
B. Joint Venture Sector	1274.00	1519.98	119.31	1270.00	1419.31	111.76	12575.00	14216.89	113.06	12541.00	14338.81	114.34
19. BORL, Bina	510.00	582.81	114.28	508.00	601.41	118.39	5030.00	5260.73	104.59	5016.00	5261.66	104.90
20. HMEL, GGSR, Bhatinda	764.00	937.17	122.67	762.00	817.90	107.34	7545.00	8956.16	118.70	7525.00	9077.15	120.63
C. Private Sector	6795.00	7827.26	115.19	6776.00	7902.94	116.63	67068.00	76259.62	113.70	66885.00	73569.37	109.99
21. RIL, Jamnagar	2803.00	2774.61	98.99	2795.00	2840.78	101.64	27666.00	27533.53	99.52	27590.00	27034.88	97.99
22. RIL, SEZ	2293.00	3280.46	143.06	2287.00	3280.62	143.45	22636.00	31163.36	137.67	22574.00	30875.05	136.77
Total RIL	5096.00	6055.06	118.82	5082.00	6121.40	120.45	50301.00	58696.89	116.69	50164.00	57909.93	115.44
23. EOL, Vadinar	1699.00	1772.19	104.31	1694.00	1781.54	105.17	16767.00	17562.73	104.75	16721.00	15659.44	93.65
TOTAL(A+B+C)	19540.00	21108.06	108.02	18216.00	21433.83	117.66	192877.00	204994.09	106.28	179809.00	191977.27	106.77

*: Provisional.

MINISTRY OF PETROLEUM & NATURAL GAS

Production of Petroleum Products during the month of January 2017 and cumulatively for the period April-January, 2016-17 vis-à-vis April-January 2015-16

(in TMT)

Name of Undertaking/Unit	Planned production during the month	Production during the			Cumulative Production			% variation over last year		% variation during the month under review over planned production
		Month under review *	Corresponding month of last year	Preceding month of current year **	(April-January)			During the month under review	Upto the end of the period	
					Planned production during current year	Actual production during current year*	Actual production during corresponding period of last year**			
(1)	(2)	(3)	(4)	(5)	(5)	(6)	(7)	(8)	(9)	(10)
I. Refinery										
A. Public Sector	11288.744	10915.626	11029.745	11390.217	106087.512	107367.739	98000.986	-1.03	9.56	-3.31
1. IOC, Guwahati	87.493	79.512	53.141	77.483	861.396	913.779	960.371	49.62	-4.85	-9.12
2. IOC, Barauni	499.082	481.255	526.449	539.267	4778.678	4968.768	5073.237	-8.58	-2.06	-3.57
3. IOC, Gujarat	1050.723	867.623	1131.619	1097.448	10718.443	10946.367	10893.393	-23.33	0.49	-17.43
4. IOC, Haldia	621.052	522.294	661.275	451.367	5960.540	5754.085	5907.762	-21.02	-2.60	-15.90
5. IOC, Mathura	708.518	761.602	742.957	779.750	7043.455	7401.704	7107.102	2.51	4.15	7.49
6. IOC, Digboi	50.666	46.892	36.027	45.232	530.372	447.963	439.596	30.16	1.90	-7.45
7. IOC, Panipat	1327.041	1349.249	1369.694	1371.522	12637.137	13103.939	12689.776	-1.49	3.26	1.67
8. IOC, Bongaigaon	182.486	182.168	205.376	214.113	1807.034	1889.572	1859.315	-11.30	1.63	-0.17
9. IOC, Paradip	982.800	817.283	233.487	780.916	6865.000	5076.934	233.487	-	-	-16.84
Total IOC	5509.860	5107.878	4960.025	5357.098	51202.055	50503.111	45164.039	2.98	11.82	-7.30
10. BPCL, Mumbai	1142.441	1071.258	1107.853	1223.198	11281.701	11478.326	10578.659	-3.30	8.50	-6.23
11. BPCL, Kochi	1286.438	958.898	874.556	971.375	8666.501	9032.018	8444.449	9.64	6.96	-25.46
Total BPCL	2428.879	2030.156	1982.409	2194.573	19948.202	20510.344	19023.108	2.41	7.82	-16.42
12. HPCL, Mumbai	521.740	698.448	695.954	714.379	6134.984	6582.862	6088.744	0.36	8.12	33.87
13. HPCL, Visakh	742.907	755.926	813.109	823.276	6868.020	7049.594	6979.514	-7.03	1.00	1.75
Total HPCL	1264.647	1454.374	1509.063	1537.655	13003.004	13632.456	13068.258	-3.62	4.32	15.00
14. CPCL, Manali	489.815	673.819	809.999	663.094	7597.510	7837.428	6668.975	-16.81	17.52	37.57
15. CPCL, CBR	51.457	41.396	55.819	41.067	506.245	443.833	437.837	-25.84	1.37	-19.55
Total CPCL	541.272	715.215	865.818	704.161	8103.755	8281.261	7106.812	-17.39	16.53	32.14
16. NRL, Numaligarh	218.486	283.699	241.851	262.204	2227.995	2232.683	2071.199	17.30	7.80	29.85
17. MRPL, Mangalore	1321.600	1316.862	1463.867	1327.878	11566.100	12139.971	11515.985	-10.04	5.42	-0.36
18. ONGC, Tatipaka	4.000	7.442	6.712	6.648	36.400	67.912	51.585	10.88	31.65	86.06
B. Joint Venture Sector	1233.411	1364.452	1268.932	1445.847	11970.627	13182.506	13288.862	7.53	-0.80	10.62
19. BOREL, Bina	484.100	549.253	576.076	577.267	4565.000	4777.745	4799.623	-4.66	-0.46	13.46
20. HMEL, GGSR, Bhatinda	749.311	815.199	692.856	868.580	7405.627	8404.761	8489.239	17.66	-1.00	8.79
C. Private Sector	7977.452	7991.632	8048.984	7892.466	77731.929	78307.424	76395.160	-0.71	2.50	0.18
21. RIL, Jamnagar	2743.945	2900.119	2743.945	2753.182	27158.929	27456.604	27158.929	5.69	1.10	5.69
22. RIL, SEZ	3618.127	3508.030	3618.127	3442.839	34200.228	34096.173	34200.228	-3.04	-0.30	-3.04
Total RIL	6362.072	6408.149	6362.072	6196.021	61359.157	61552.777	61359.157	0.72	0.32	0.72
23. EOL, Vadinar	1615.380	1583.483	1686.912	1696.445	16372.772	16754.647	15036.003	-6.13	11.43	-1.97
TOTAL(A+B+C)	20499.607	20271.710	20347.661	20728.530	195790.068	198857.668	187685.008	-0.37	5.95	-1.11
II. Fractionators										
ONGC	281.302	288.359	231.386	301.215	2463.356	2609.986	2384.940	24.62	9.44	2.51
OIL	3.850	3.048	3.574	3.172	34.600	28.944	33.928	-14.72	-14.69	-20.83
GAIL	91.794	100.144	72.021	98.417	850.628	931.632	901.222	39.05	3.37	9.10
D. Total Fractionators	376.947	391.551	306.981	402.804	3348.584	3570.562	3320.090	27.55	7.54	3.87
Grand Total (A+B+C+D)	20876.554	20663.262	20654.642	21131.334	199138.652	202428.231	191005.098	0.04	5.98	-1.02

Note: Totals may not tally due to rounding off.

*: Provisional.

**:Revised