

Brief note on the Production Performance of Oil & Natural Gas Sector for the month of January, 2016 and cumulatively for the period April, 2015-January, 2016 vis-à-vis April, 2014-January, 2015

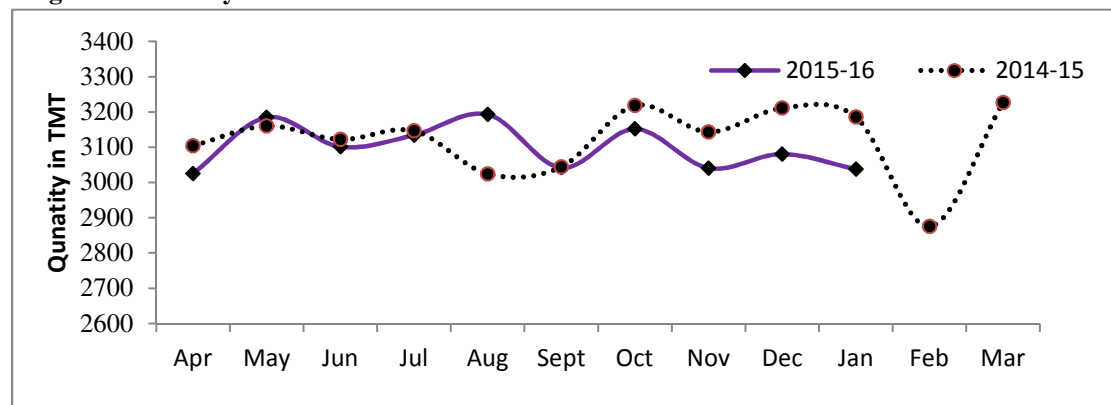
1. Crude Oil Production

1.1 Indigenous crude oil production (including condensate) during January, 2016 was 3037.537 TMT which is 4.34% lower than the target for the month and 4.64% lower than the production during corresponding period of last year. Cumulative crude oil production during April, 2015-January, 2016 was 30990.961 TMT which is 0.52% higher than target for the period and 1.17% lower than the production during corresponding period of last year. Unit-wise and state-wise crude oil production is given at Annexure-I. Unit-wise crude oil production (including condensate) for the month of January, 2016 and cumulatively for the period April, 2015-January, 2016 vis-à-vis same period of last year has been shown in Table-1.1 and month-wise in Figure-1.1

Table 1.1: Crude Oil Production (TMT)

Oil Company	Target	January (Month)				April-January (Cumulative)			
	2015-16 (Apr-Mar)	2015-16		2014-15	% over last year	2015-16		2014-15	% over last year
		Target	Prod.	Prod.		Target	Prod.	Prod.	
ONGC	22732.00	1953.29	1832.29	1885.77	97.16	18888.05	18717.15	18609.04	100.58
OIL	3595.00	312.36	260.36	288.67	90.19	2985.74	2710.97	2867.43	94.54
PSC Fields	10718.74	909.76	944.88	1011.00	93.46	8957.91	9562.84	9882.86	96.76
Total	37045.74	3175.41	3037.54	3185.44	95.36	30831.70	30990.96	31359.32	98.83

Figure-1: Monthly Crude Oil Production



1.2 ONGC's crude oil production during January, 2016 was 1832.293 TMT which is 6.19% lower than the target for the month and 2.84% lower than the production achieved in the corresponding month of last year. ONGC's cumulative production during April, 2015-January, 2016 was 18717.153 TMT which is 0.90% lower than the cumulative target and 0.58% higher than the production during the corresponding period of last year. The shortfall in ONGC's production was due to following reason:

- Gujarat, Mehsana: Less Air injection in Santhal field, increasing water cut in down dip wells of N Kadi field, increase in water cut, increase in sick wells & power shut down.
- Gujarat, Ahmedabad: Delayed / less gain from Gamij Field. Power shutdown, lift optimization.
- Assam: Low Gas injection pressure, power shut down & closure of wells for rig-less jobs.
- Tamilnadu, Karaikal: Less than anticipated production from Madanam field & closure of wells due to less / nil off-take by consumers.
- Mumbai High: Delay in commencement of production from B127 cluster. Less production from Cluster-7 & WO-16 cluster.
- Condensate: Less condensate from Hazira Plant due to less gas receipt in view of less gas production from B & S Asset mainly because of BPA shutdown.

1.3 OIL's crude oil production during January, 2016 was 260.361 TMT which is 16.65% lower than the target for the month and 9.81% lower than the production achieved in the corresponding month of last year. OIL's cumulative production during April, 2015-January, 2016 was 2710.973 TMT which is 9.20% lower than the cumulative target and 5.46% lower than the production during the corresponding period of last year. Reasons for shortfall in production are given below:

- Rise in water cut in wells of Shalmari, Greater Chandmari and Greater Hapjan Fields.
- Permanent loss at Makum & Hapjan OCS.
- Major loss of production at Makum, Hapjan, Haveda and TX due to OIL blockade by All Moran Student Union, Makum Regional Committee on 27.01.2016.
- Miscreant activities in no. of wells affected gas lift operation leading to crude oil production loss.
- Less than planned contribution from workover & new wells

1.4 Pvt. /JVs' crude oil production during January, 2016 was 944.883 TMT which is 3.86% higher than the target for the month and 6.54% lower than production of corresponding month of last year. Pvt./JVs' cumulative production during April, 2015-January, 2016 was 9562.835 TMT which is 6.75% higher than the cumulative target and 3.24% lower than the production during the corresponding period of last year. Reasons for shortfall in production are given below:

- Cairn: Natural Decline in Ravva, Mangala & Underperformance of Bhagyam wells in RJ-ON-90/1
- RIL: Under performance of wells of KG D6 due to sand ingress and water loading.
- GSPC: Well Completion Issues in KG-OSN-2001/3

- Other: Due to Sand Ingression, High W/C and fish in few wells of Kharsang. Panna-Mukta carried out its planned shutdown for riser repair in April- May-15 and Gas Evacuation constraint in July'15 due to repair of 42" SB – HAZIRA ONGC Line. S/Dn in Dec-15 due to PPA riser issue.

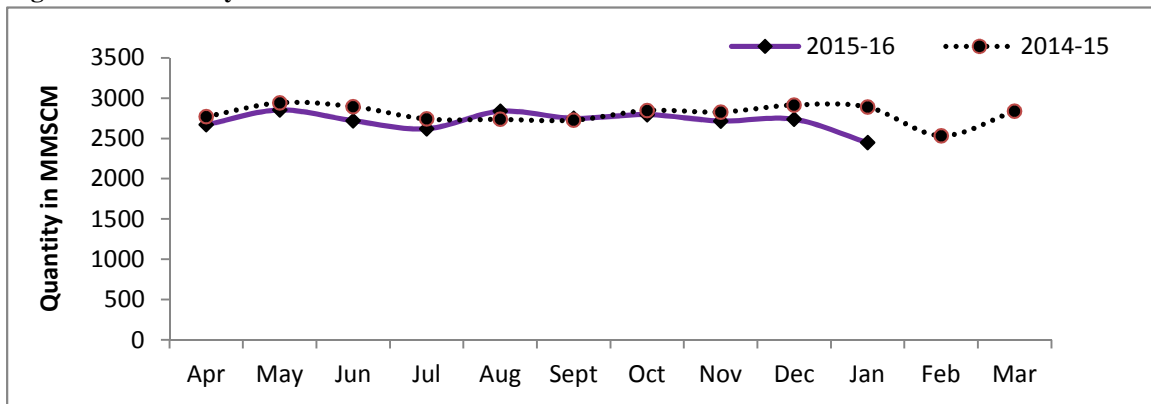
2. Natural Gas Production

2.1 Natural Gas Production during January, 2016 was 2447.383 MMSCM which is 19.13% lower than the target for the month and 15.26% lower than the production during corresponding period of last year. Cumulative natural gas production during April, 2015-January, 2016 was 27144.548 MMSCM which is 7.64% lower than the target for the period and 4.03 lower than the production during corresponding period of last year. Unit-wise and state-wise natural gas production is given at Annexure-II. Unit-wise natural gas production for the month of January, 2016 and cumulatively for the period April, 2015-January, 2016 vis-à-vis same period of last year has been shown in Table-2.1 and month-wise in Figure-2.1.

Table 2.1: Natural Gas Production (MMSCM)

Oil Company	Target	January (Month)				April-January (Cumulative)			
	2015-16 (Apr-Mar)	2015-16		2014-15	% over last year	2015-16		2014-15	% over last year
		Target	Prod.	Prod.		Target	Prod.	Prod.	
ONGC	23908.00	2077.92	1530.86	1898.20	80.65	19861.43	17803.01	18495.39	96.26
OIL	3009.97	248.79	245.72	229.55	107.04	2519.57	2365.78	2287.85	103.41
PSC Fields	8361.91	699.55	670.80	760.53	88.20	7007.94	6975.76	7502.43	92.98
Total	35279.88	3026.26	2447.38	2888.28	84.74	29388.93	27144.55	28285.66	95.97

Figure-2.1: Monthly Natural Gas Production



2.2 ONGC's natural gas production during January, 2016 was 1530.864 MMSCM which is 26.33% lower than the target for the month and 19.35% lower than the production achieved in the corresponding month of last year. ONGC's cumulative natural gas production during April, 2015-January, 2016 was 17803.007 MMSCM which is 10.36% lower than the cumulative target and 3.74% lower than the production during the corresponding period of last year. Reasons for the shortfall are given below:

- ❖ Eastern Offshore: Delay in commencement of production from one deep water well (S2AB) planned in Eastern offshore from June'15 and restricted withdrawal by GAIL.
- ❖ Bassein & Satellite: Shutdown taken at BPA installation for carrying out reconstruction activities under on-going "Reconstruction of BPA & BPB Platforms" Project. Maintenance of one Booster compressor at BCPB2 installation since 13.12.15 (Overhauled and put in operation from 21.01.16).
- ❖ Gujarat: Closure of wells due to unplanned shut down of GAIL Gas line from Ahmedabad/Kalol to Ramol. Decline in associated gas production in South Kadi & Gamij fields
- ❖ Andhra Pradesh: Closure of 42 wells as GAIL pipelines in Tatipaka-Lanco & Endamaru-Oduru sections are still under repair.
- ❖ Tamil-Nadu: Closure of wells on account of less/ nil off-take by consumers in Ramnad area.
- ❖ Assam: Decline in associated gas production in Geleki & Lakwa fields.
- ❖ Tripura: Less off take due to stoppage of 2nd unit of OTPC.

2.3 OIL's natural gas production during January, 2016 was 245.717 MMSCM which is 1.24% lower than the target for the month and 7.04% higher than the production achieved in the corresponding month of last year. OIL's cumulative natural gas production during April, 2015-January, 2016 was 2365.778 MMSCM which is 6.10% lower than the cumulative target and 3.41% higher than the production during the corresponding period of last year. Reasons for the shortfall are given below:

- ❖ Shortfall in production of natural gas is mainly due to low upliftment by the consumers like BCPL, NTPS, and NRL etc.

2.4 Pvt. /JVs' natural gas production during January, 2016 was 670.802 MMSCM which is 4.11% lower than the target for the month and 11.80% lower than the production achieved in the corresponding month of last year. Pvt. /JV's cumulative natural gas production during April, 2015-January, 2016 was 6975.763 MMSCM which is 0.46% lower than the cumulative target and 7.02% lower than the production during the corresponding period of last year. Reasons for the shortfall are given below:

- RIL (KG-D6): Under performance of wells of KG D6 due to sand ingress and water loading.
- GSPC: Well completion issues in KG-OSN-2001/3
- Cairn: CB-OS/2: Non-associated gas producing well LB-7 watered out prematurely

- Other operators: Natural Decline in Gas production of Ravva, Panna-Mukta, PY-1 and Hazira. Panna-Mukta carried out its planned shutdown for riser repair in April- May-15 and Gas Evacuation constraint in July'15 due to repair of 42" SB – HAZIRA ONGC line, shutdown in Dec-15 due to PPA riser issue.
- CBM: Extended dewatering in Raniganj South (GEECL), Delayed forest clearance in Raniganj East (Essar).

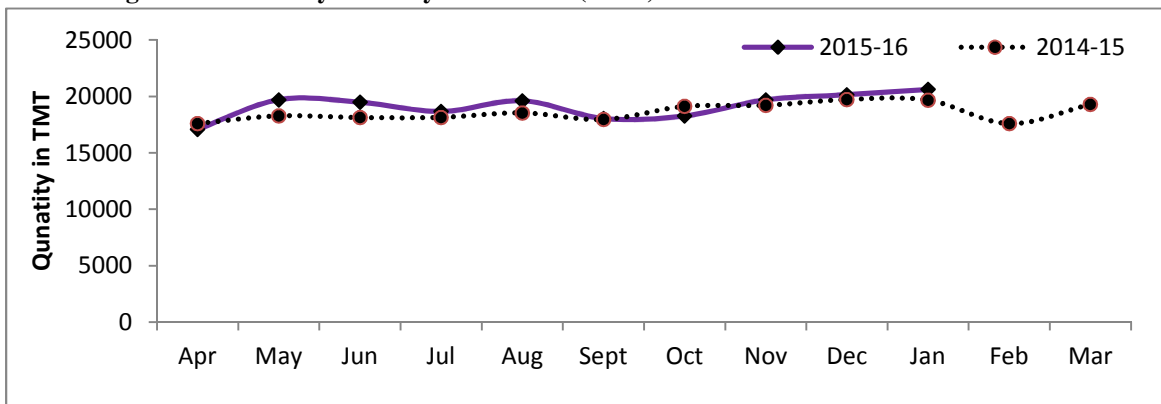
3. Refinery Production (in terms of Crude oil processed):

3.1 Refinery production during January, 2016 was 20624.000 TMT which is 4.36% higher than the target for the month and 4.84% higher than the production during corresponding period of last year. Cumulative production during April, 2015-January, 2016 was 191334.665 TMT which is 2.32% higher than the target for the period and 2.67% higher than the production during corresponding period of last year. Unit-wise production is given at Annexure-III. Unit-wise production for the month of January, 2016 and cumulatively for the period April, 2015-January, 2016 vis-à-vis same period of last year has been shown in Table-3.1 and month-wise in Figure-3.1.

Table 3.1: Refinery Production (TMT)

Oil Company	Target	January (Month)				April-January (Cumulative)			
	2015-16 (Apr-Mar)	2015-16		2014-15	% over last year	2015-16		2014-15	% over last year
		Target	Actual	Actual		Target	Actual	Actual	
IOCL	54999.99	4812.86	4885.21	4620.40	105.73	45720.82	46558.73	44701.65	104.15
BPCL	23197.00	2020.00	2061.90	2077.03	99.27	19387.00	19993.22	19213.10	104.06
HPCL	16199.88	1438.04	1605.63	1539.47	104.30	13416.73	14140.24	13265.78	106.59
CPCL	10800.10	948.46	951.05	945.14	100.63	8965.76	7762.49	9010.68	86.15
NRL	2700.00	242.00	233.93	223.94	104.46	2237.00	2081.11	2376.49	87.57
MRPL	15250.00	1500.00	1557.27	1354.58	114.96	12500.00	12671.53	11952.33	106.02
ONGC	60.88	5.35	6.77	3.25	208.51	50.46	52.47	42.18	124.40
BORL	5200.00	500.00	601.41	577.58	104.13	4200.00	5261.66	5221.86	100.76
HMEL	9000.00	762.30	817.90	719.35	113.70	7524.59	9077.15	5861.68	154.86
RIL	68041.55	5843.20	6121.40	5843.20	104.76	57575.30	58076.63	57575.30	100.87
EOL	18792.76	1690.90	1781.54	1768.41	100.74	15410.96	15659.44	17139.04	91.37
TOTAL	224242.16	19763.10	20624.00	19672.35	104.84	186988.62	191334.66	186360.10	102.67

Figure 3.1: Monthly Refinery Production (TMT)



3.2 PSU Refineries’ production during January, 2016 was 11301.753 TMT which is 3.06% higher than the target for the month and 5.00% higher than the production achieved in the corresponding month of last year. Cumulative production of PSUs during April, 2015-January, 2016 was 103259.785 TMT which is 0.96% higher than the cumulative target and 2.68% higher than the production during the corresponding period of last year. Reasons for shortfalls in PSU refineries are given below:

- ❖ IOCL, Gujarat: Throughput is restricted due deferment of CCRU S/D from Aug-15 to Jan-16 and lower North Gujarat Crude receipt.
- ❖ IOCL, Digboi: Throughput is restricted due to lower Assam crude availability.
- ❖ IOCL, Guwahati: Throughput is lower due to planned shutdown.
- ❖ CPCL, Manali: Crude throughput was lower due to VGO containment.
- ❖ NRL, Numaligarh: Lower receipt of Crude from OIL.

3.3 Production in JV refineries during January, 2016 was 1419.310 TMT which is 12.44% higher than the target for the month and 9.44% higher than the production achieved in the corresponding month of last year. Cumulative production in JV refineries during April, 2015-January, 2016 was 14338.814 TMT which is 22.30% higher than the cumulative target and 29.37% higher than the production during the corresponding period of last year.

3.4 Production in private refineries during January, 2016 was 7902.937 TMT which is 4.90% higher than the target for the month and 3.83% higher than the production achieved in the corresponding month of last year. Cumulative production in private refineries during April, 2015-January, 2016 was 73736.066 TMT which is 1.03% higher than the cumulative target and 1.31% lower than the production during the corresponding period of last year.

3.5 Refinery-wise details of the capacity utilization and Production of petroleum products during the month of January, 2016 and cumulatively for the period April, 2015-January, 2016 vis-à-vis April, 2014-January, 2015 are given at Annexures-IV and V respectively.

Annexure-I

MINISTRY OF PETROLEUM & NATURAL GAS

(Para 1.1)

Review of Crude Oil Production during the month of January, 2016 and cumulatively for the period April, 2015-January, 2016 vis-à-vis April, 2014-January, 2015

(Qty: '000' Tonnes)

Name of Undertaking/Unit/State	Planned production during the month	Production during the			Cumulative Production			% variation over last year		% variation during the month under review over planned production
		Month under review *	Corresponding month of last year	Preceding month of current year	(April - January)			During the month under review	Upto the end of the period	
					Planned production during current year	Actual production during current year **	Actual production during corresponding period of last year			
(1)	(2)	(3)	(4)	(5)	(6)	(7)	(8)	(9)	(10)	(11)
1. ONGC	1953.291	1832.293	1885.771	1896.683	18888.050	18717.153	18609.037	-2.84	0.58	-6.19
Onshore	531.116	493.713	498.699	491.864	5085.386	4849.065	5113.047	-1.00	-5.16	-7.04
Andhra Pradesh	24.076	24.476	22.838	24.820	234.683	249.266	206.888	7.17	20.48	1.66
Assam ^	90.363	80.283	82.465	81.615	836.580	806.247	908.273	-2.65	-11.23	-11.16
Gujarat	392.997	367.921	373.466	365.190	3790.366	3581.496	3802.423	-1.48	-5.81	-6.38
Tamil Nadu	23.680	21.033	19.930	20.239	223.757	212.056	195.464	5.53	8.49	-11.18
Offshore	1422.175	1338.580	1387.072	1404.819	13802.664	13868.088	13495.989	-3.50	2.76	-5.88
Eastern Offshore	0.925	2.963	1.961	3.371	10.241	22.423	14.336	51.10	56.41	220.32
Western Offshore	1299.966	1253.583	1262.372	1288.316	12628.133	12764.910	12252.423	-0.70	4.18	-3.57
Condensates	121.284	82.034	122.739	113.132	1164.290	1080.755	1229.230	-33.16	-12.08	-32.36
2. OIL (Onshore)	312.362	260.361	288.672	270.124	2985.737	2710.973	2867.429	-9.81	-5.46	-16.65
Assam	311.650	259.750	288.136	269.520	2980.111	2706.424	2861.344	-9.85	-5.41	-16.65
Arunachal Pradesh	0.712	0.611	0.536	0.604	5.626	4.549	6.085	13.99	-25.24	-14.19
3. DGH (Private / JVC)	909.762	944.883	1010.997	913.850	8957.911	9562.835	9882.859	-6.54	-3.24	3.86
Onshore	700.595	743.896	773.359	723.220	6914.879	7403.403	7612.827	-3.81	-2.75	6.18
Arunachal Pradesh	5.929	4.422	5.031	4.390	58.525	42.267	60.102	-12.10	-29.67	-25.42
Gujarat	16.459	12.346	11.427	13.550	161.795	125.564	116.853	8.04	7.45	-24.99
Rajasthan	678.207	725.890	756.901	703.970	6694.559	7231.111	7435.872	-4.10	-2.75	7.03
Tamil Nadu	0.000	1.238	0.000	1.310	0.000	4.461	0.000	-	-	-
Offshore	209.167	200.987	237.638	190.630	2043.033	2159.432	2270.032	-15.42	-4.87	-3.91
Eastern Offshore	106.144	83.127	126.679	90.400	1019.150	1069.122	1113.469	-34.38	-3.98	-21.68
Gujarat Offshore	29.270	36.010	34.746	35.020	288.919	344.581	334.567	3.64	2.99	23.03
Western Offshore	73.753	81.850	76.213	65.210	734.964	745.729	821.996	7.40	-9.28	10.98
GRAND TOTAL (1+2+3)	3175.415	3037.537	3185.440	3080.657	30831.698	30990.961	31359.325	-4.64	-1.17	-4.34
Onshore	1544.073	1497.970	1560.730	1485.208	14986.002	14963.441	15593.303	-4.02	-4.04	-2.99
Offshore	1631.342	1539.567	1624.710	1595.449	15845.697	16027.520	15766.021	-5.24	1.66	-5.63

Note: Totals may not tally due to rounding off figures.

^: Includes crude oil production of Tripura

*: Provisional. **: Revised

Reasons for shortfall are indicated in the note.

MINISTRY OF PETROLEUM & NATURAL GAS

Review of Natural Gas Production during the month of January, 2016 and cumulatively for the period April, 2015-January, 2016 vis-à-vis April, 2014-January, 2015

(Qty: Million Cubic Meters)

Name of Undertaking/Unit/State	Planned production during the month	Production during the			Cumulative Production (April - January)			% variation over last year		% variation during the month under review over planned production
		Month under review *	Corresponding month of last year	Preceding month of current year	Planned production during current year	Actual production during current year	Actual production during corresponding period of last year	During the month under review	Upto the end of the period	
(1)	(2)	(3)	(4)	(5)	(6)	(7)	(8)	(9)	(10)	(11)
1. ONGC	2077.921	1530.864	1898.203	1818.990	19861.428	17803.007	18495.387	-19.35	-3.74	-26.33
Onshore	469.185	395.163	395.436	384.433	4453.377	3946.044	3965.675	-0.07	-0.50	-15.78
Andhra Pradesh	76.426	55.218	48.416	55.018	659.141	499.932	440.411	14.05	13.51	-27.75
Assam	42.038	32.663	34.860	33.949	390.435	335.502	381.114	-6.30	-11.97	-22.30
Gujarat	103.044	116.490	121.051	114.310	1022.726	1159.212	1199.747	-3.77	-3.38	13.05
Rajasthan	1.270	0.038	0.478	0.701	12.541	4.589	4.538	-92.05	1.11	-97.01
Tamil Nadu	111.885	73.951	90.311	70.948	1052.449	847.447	1009.939	-18.12	-16.09	-33.90
Tripura	134.522	116.803	100.320	109.507	1316.085	1099.362	929.926	16.43	18.22	-13.17
Offshore	1608.736	1135.701	1502.767	1434.557	15408.051	13856.963	14529.711	-24.43	-4.63	-29.40
Eastern Offshore	75.106	21.955	22.168	25.619	657.095	182.645	77.749	-0.96	134.92	-70.77
Western Offshore	1533.629	1113.746	1480.599	1408.938	14750.956	13674.318	14451.963	-24.78	-5.38	-27.38
2. OIL	248.792	245.717	229.547	266.102	2519.566	2365.778	2287.851	7.04	3.41	-1.24
Assam	225.404	231.485	210.816	243.084	2311.008	2187.326	2115.913	9.80	3.38	2.70
Arunachal Pradesh	1.168	0.996	1.078	1.029	11.568	9.504	9.848	-7.61	-3.49	-14.73
Rajasthan	22.220	13.236	17.653	21.989	196.990	168.948	162.090	-25.02	4.23	-40.43
3. DGH (Private / JVC)	699.551	670.802	760.525	651.910	7007.938	6975.763	7502.425	-11.80	-7.02	-4.11
Onshore	84.635	112.404	100.178	114.050	835.430	1040.929	901.178	12.20	15.51	32.81
Arunachal Pradesh	0.939	1.392	1.865	1.420	9.272	15.503	18.209	-25.36	-14.86	48.19
Gujarat	6.263	7.334	7.930	7.640	61.820	76.551	87.070	-7.52	-12.08	17.10
Rajasthan	77.433	103.560	90.383	104.870	764.338	948.484	795.899	14.58	19.17	33.74
Tamil Nadu	0.000	0.118	0.000	0.120	0.000	0.391	0.000	-	-	-
CBM	52.345	33.195	22.827	33.350	516.693	323.839	184.755	45.42	75.28	-36.58
Jharkhand (CBM)	0.297	0.175	0.237	0.150	2.931	1.266	2.087	-26.16	-39.34	-41.07
Madhya Pradesh (CBM)	3.690	0.141	0.075	0.080	36.419	1.314	1.904	88.00	-30.99	-96.18
West Bengal (CBM)	48.358	32.879	22.515	33.120	477.343	321.259	180.764	46.03	77.72	-32.01
Offshore	562.571	525.203	637.520	504.510	5655.815	5610.995	6416.492	-17.62	-12.55	-6.64
Eastern Offshore	410.909	335.037	418.195	349.130	4048.696	3734.683	4162.124	-19.88	-10.27	-18.46
Gujarat Offshore	3.540	5.888	5.612	5.800	34.948	56.107	101.621	4.92	-44.79	66.31
Western Offshore	148.122	184.278	213.713	149.580	1572.172	1820.205	2152.747	-13.77	-15.45	24.41
TOTAL (1+2+3)	3026.264	2447.383	2888.275	2737.002	29388.932	27144.548	28285.663	-15.26	-4.03	-19.13
CBM	52.345	33.195	22.827	33.350	516.693	323.839	184.755	45.42	75.28	-36.58
Onshore	802.612	753.284	725.161	764.585	7808.373	7352.751	7154.704	3.88	2.77	-6.15
Offshore	2171.307	1660.904	2140.287	1939.067	21063.866	19467.958	20946.203	-22.40	-7.06	-23.51

Note: Totals may not tally due to rounding off figures.

*: Provisional.

**: Revised

CBM: Coal Bed Methane production.

Reasons for shortfall are indicated in the note.

MINISTRY OF PETROLEUM & NATURAL GAS

Review of Refinery Crude Throughput (in terms of crude oil processed) during the month of January, 2016 and cumulatively for the period April, 2015-January, 2016 vis-à-vis April, 2014-January, 2015

(Qty: '000' Tonnes)

Name of Undertaking/Unit	Planned production during the month	Production during the			Cumulative Production			% variation		% variation during the month under review over planned production
		Month under review *	Corresponding month of last year	Preceding month of current year	(April - January)			over last year		
					Planned production during current year	Actual production during current year **	Actual production during corresponding period of last year	During the month under review	Upto the end of the period	
(1)	(2)	(3)	(4)	(5)	(6)	(7)	(8)	(9)	(10)	(11)
A. Public Sector	10966.707	11301.753	10763.807	10848.589	102277.774	103259.785	100562.218	5.00	2.68	3.06
1. IOC, Guwahati	68.000	40.265	80.955	74.637	835.000	781.081	839.813	-50.26	-6.99	-40.79
2. IOC, Barauni	533.630	561.590	546.765	602.386	5267.261	5471.557	4950.752	2.71	10.52	5.24
3. IOC, Gujarat	1221.239	1188.978	1164.282	1205.530	10942.934	11373.873	11247.052	2.12	1.13	-2.64
4. IOC, Haldia	690.000	722.924	594.211	726.618	6475.000	6479.566	6387.838	21.66	1.44	4.77
5. IOC, Mathura	700.000	770.797	688.871	759.980	7044.000	7306.094	7029.726	11.89	3.93	10.11
6. IOC, Digboi	58.000	43.004	55.032	42.035	548.000	458.801	520.801	-21.86	-11.90	-25.86
7. IOC, Panipat	1337.088	1357.204	1270.109	1298.524	12655.220	12639.725	11748.504	6.86	7.59	1.50
8. IOC, Bongaigaon	204.905	200.447	220.177	208.194	1953.410	2048.032	1977.166	-8.96	3.58	-2.18
Total IOC	4812.862	4885.209	4620.402	4917.904	45720.825	46558.729	44701.652	5.73	4.15	1.50
9. BPCL, Mumbai	1120.000	1137.129	1155.285	1149.799	10777.000	11077.752	10607.772	-1.57	4.43	1.53
10. BPCL, Kochi	900.000	924.766	921.741	935.222	8610.000	8915.465	8605.333	0.33	3.60	2.75
Total BPCL	2020.000	2061.895	2077.026	2085.022	19387.000	19993.217	19213.105	-0.73	4.06	2.07
11. HPCL, Mumbai	633.590	748.928	692.107	719.067	5873.759	6542.312	6066.299	8.21	7.85	18.20
12. HPCL, Visakh	804.447	856.699	847.366	846.174	7542.970	7597.927	7199.484	1.10	5.53	6.50
Total HPCL	1438.037	1605.627	1539.473	1565.241	13416.729	14140.238	13265.782	4.30	6.59	11.65
13. CPCL, Manali	906.000	895.457	902.517	501.370	8546.600	7331.308	8559.428	-0.78	-14.35	-1.16
14. CPCL, Narimanam(CBR)	42.460	55.588	42.620	19.522	419.160	431.177	451.257	30.43	-4.45	30.92
Total CPCL	948.460	951.045	945.137	520.892	8965.760	7762.485	9010.685	0.63	-13.85	0.27
15. NRL, Numaligarh	242.000	233.934	223.940	229.210	2237.000	2081.110	2376.487	4.46	-12.43	-3.33
16. MRPL, Mangalore	1500.000	1557.272	1354.581	1523.236	12500.000	12671.534	11952.328	14.96	6.02	3.82
17. ONGC, Tatipaka	5.347	6.772	3.248	7.085	50.460	52.472	42.180	108.51	24.40	26.63
B. Joint Venture Sub Total	1262.295	1419.310	1296.933	1436.554	11724.590	14338.814	11083.541	9.44	29.37	12.44
18. BORL, Bina	500.000	601.412	577.583	501.648	4200.000	5261.664	5221.864	4.13	0.76	20.28
19. HMEL, GGSR, Bhatinda	762.295	817.898	719.350	934.906	7524.590	9077.150	5861.677	13.70	54.86	7.29
C. Private Sector	7534.100	7902.937	7611.605	7861.267	72986.257	73736.066	74714.340	3.83	-1.31	4.90
20. RIL, Jamnagar	2802.117	2840.777	2802.117	2831.453	26383.686	27201.572	26383.685	1.38	3.10	1.38
21. RIL, SEZ	3041.083	3280.618	3041.083	3249.339	31191.612	30875.053	31191.612	7.88	-1.01	7.88
Total RIL	5843.200	6121.395	5843.200	6080.792	57575.298	58076.625	57575.297	4.76	0.87	4.76
22. Essar Oil Ltd.(EOL), Vadinar	1690.900	1781.542	1768.405	1780.475	15410.959	15659.441	17139.043	0.74	-8.63	5.36
TOTAL(A+B+C)	19763.102	20624.000	19672.345	20146.410	186988.620	191334.665	186360.099	4.84	2.67	4.36

Note: may December not tally due to rounding off figures.

*: Provisional. **: Revised

Reasons for shortfall are indicated in the note.

MINISTRY OF PETROLEUM & NATURAL GAS

Refinery-wise Capacity Utilisation during the month of January, 2016 and cumulatively for the period April, 2015-January, 2016 vis-à-vis April, 2014-January, 2015

(Qty: '000' Tonnes)

Name of Undertaking/Unit	January, 2016			January, 2015			Cumulative (April - January)					
	Prorated Installed Capacity	Actual Crude T'put *	% Utilisation of I/C	Prorated Installed Capacity	Actual Crude T'put	% Utilisation of I/C	2015-16			2014-15		
							Prorated Installed Capacity	Actual Crude T'put *	% Utilisation of I/C	Prorated Installed Capacity	Actual Crude T'put	% Utilisation of I/C
(1)	(2)	(3)	(4)	(5)	(6)	(7)	(8)	(9)	(10)	(11)	(12)	(13)
A. Public Sector	10170.000	11301.753	111.13	10197.000	10763.807	105.56	100383.000	103259.785	102.87	100658.000	100562.218	99.90
1. IOC, Guwahati	85.000	40.265	47.37	85.000	80.955	95.24	836.000	781.081	93.43	838.000	839.813	100.22
2. IOC, Barauni	508.000	561.590	110.55	510.000	546.765	107.21	5016.000	5471.557	109.08	5030.000	4950.752	98.42
3. IOC, Koyali	1160.000	1188.978	102.50	1164.000	1164.282	100.02	11454.000	11373.873	99.30	11485.000	11247.052	97.93
4. IOC, Haldia	635.000	722.924	113.85	637.000	594.211	93.28	6270.000	6479.566	103.34	6288.000	6387.838	101.59
5. IOC, Mathura	678.000	770.797	113.69	679.000	688.871	101.45	6689.000	7306.094	109.23	6707.000	7029.726	104.81
6. IOC, Digboi	55.000	43.004	78.19	55.000	55.032	100.06	543.000	458.801	84.49	545.000	520.801	95.56
7. IOC, Panipat	1270.000	1357.204	106.87	1274.000	1270.109	99.69	12541.000	12639.725	100.79	12575.000	11748.504	93.43
8. IOC, Bongaigaon	199.000	200.447	100.73	200.000	220.177	110.09	1965.000	2048.032	104.23	1970.000	1977.166	100.36
Total IOC	4591.000	4885.209	106.41	4603.000	4620.402	100.38	45315.000	46558.729	102.74	45439.000	44701.652	98.38
9. BPCL, Mumbai	1016.000	1137.129	111.92	1019.000	1155.285	113.37	10033.000	11077.752	110.41	10060.000	10607.772	105.45
10. BPCL, Kochi	805.000	924.766	114.88	807.000	921.741	114.22	7943.000	8915.465	112.24	7964.000	8605.333	108.05
Total BPCL	1821.000	2061.895	113.23	1826.000	2077.026	0.00	17975.000	19993.217	111.23	18025.000	19213.105	106.59
12. HPCL, Mumbai	551.000	748.928	135.92	552.000	577.583	104.63	5434.000	6542.312	120.40	5449.000	6066.299	111.33
13. HPCL, Visakh	703.000	856.699	121.86	705.000	847.366	120.19	6939.000	7597.927	109.50	6958.000	7199.484	103.47
Total HPCL	1254.000	1605.627	128.04	1257.000	1539.473	122.47	12374.000	14140.238	114.27	12408.000	13265.782	106.91
14. CPCL, Manali	889.000	895.457	100.73	892.000	902.517	101.18	8779.000	7331.308	83.51	8803.000	8559.428	97.23
15. CPCL, Narimanam	85.000	55.588	65.40	85.000	42.620	50.14	836.000	431.177	51.58	838.000	451.257	53.85
Total CPCL	974.000	951.045	97.64	977.000	945.137	96.74	9615.000	7762.485	80.73	9641.000	9010.685	93.46
16. NRL, Numaligarh	254.000	233.934	92.10	255.000	223.940	87.82	2508.000	2081.110	82.98	2515.000	2376.487	94.49
17. MRPL, Mangalore	1270.000	1557.272	122.62	1274.000	1354.581	106.33	12541.000	12671.534	101.04	12575.000	11952.328	95.05
18. ONGC, Tatipaka	6.000	6.772	112.86	6.000	3.248	54.13	55.000	52.472	95.40	55.000	42.180	76.69
B. Joint Venture Sub Total	1270.000	1419.310	111.76	1274.000	1296.933	101.80	12541.000	14338.814	114.34	12575.000	11083.541	88.14
18. BORL, Bina	508.000	601.412	118.39	510.000	577.583	113.25	5016.000	5261.664	104.90	5030.000	5221.864	103.81
19. HMEI, GGSR, Bhatinda	762.000	817.898	107.34	764.000	719.350	94.16	7525.000	9077.150	120.63	7545.000	5861.677	77.69
C. Private Sector	6776.000	7902.937	116.63	6795.000	7611.605	112.02	66885.000	73736.066	110.24	67068.000	74714.340	111.40
20. RIL, Jamnagar	2795.000	2840.777	101.64	2803.000	2802.117	99.97	27590.000	27201.572	98.59	27666.000	26383.685	95.37
21. RIL, SEZ	2287.000	3280.618	143.45	2293.000	3041.083	132.62	22574.000	30875.053	136.77	22636.000	31191.612	137.80
Total RIL	5082.000	6121.395	120.45	5096.000	5843.200	114.66	50164.000	58076.625	115.77	50301.000	57575.297	114.46
22. Essar Oil Ltd.(EOL), Vadinar	1694.000	1781.542	105.17	1699.000	1768.405	104.09	16721.000	15659.441	93.65	16767.000	17139.043	102.22
TOTAL	18216.000	20624.000	113.22	18266.000	19672.345	107.70	179809.000	191334.665	106.41	180302.000	186360.099	103.36

*: Provisional.

I/C: Installed Capacity.

MINISTRY OF PETROLEUM & NATURAL GAS

Review of Production of Petroleum Products during the month of January, 2016 and cumulatively for the period April, 2015-January, 2016 vis-à-vis April, 2014-January, 2015

(Qty: '000' Tonnes)

Name of Undertaking/Unit	Planned production during the month	Production during the			Cumulative Production			% variation over last year		% variation during the month under review over planned production
		Month under review *	Corresponding month of last year	Preceding month of current year **	(April - January)			During the month under review	Upto the end of the period	
					Planned production during current year	Actual production during current year	Actual production during corresponding period of last year			
(1)	(2)	(3)	(4)	(5)	(6)	(7)	(8)	(9)	(10)	(11)
I. Production of Petroleum Products by Refinery										
A. Public Sector	10239.509	10796.258	10104.167	10238.947	95238.766	97761.642	94870.424	6.85	3.05	5.44
1. IOC, Guwahati	55.707	53.141	109.433	92.978	731.885	959.838	884.333	-51.44	8.54	-4.61
2. IOC, Barauni	484.954	526.449	500.565	566.988	4811.289	5073.237	4478.098	5.17	13.29	8.56
3. IOC, Koyali, Gujarat	1153.736	1131.619	1080.638	1177.881	10278.932	10893.394	10570.396	4.72	3.06	-1.92
4. IOC, Haldia	631.174	661.275	562.310	651.873	5879.944	5907.762	5892.620	17.60	0.26	4.77
5. IOC, Mathura	682.054	742.957	666.854	766.866	6854.743	7107.102	6836.879	11.41	3.95	8.93
6. IOC, Digboi	57.652	36.027	54.326	38.633	535.838	439.596	520.178	-33.68	-15.49	-37.51
7. IOC, Panipat	1266.412	1369.694	1207.400	1265.438	11994.517	12689.776	11698.118	13.44	8.48	8.16
8. IOC, Bongaigaon	194.586	205.376	211.860	210.152	1755.731	1856.835	1778.841	-3.06	4.38	5.55
Total IOC	4526.273	4726.538	4393.386	4770.809	42842.878	44927.540	42659.463	7.58	5.32	4.42
9. BPCL, Mumbai	1067.000	1107.853	1110.710	1062.159	10300.480	10578.659	10219.986	-0.26	3.51	3.83
10. BPCL, Kochi	853.500	874.556	872.419	885.899	7990.100	8444.450	8118.051	0.24	4.02	2.47
Total BPCL	1920.500	1982.409	1983.129	1948.058	18290.580	19023.109	18338.036	-0.04	3.74	3.22
11. HPCL, Mumbai	593.330	695.954	678.852	664.453	5506.668	6088.744	5773.363	2.52	5.46	17.30
12. HPCL, Visakh	741.711	813.109	771.722	763.864	6950.655	6979.514	6774.931	5.36	3.02	9.63
Total HPCL	1335.041	1509.063	1450.574	1428.317	12457.322	13068.258	12548.294	4.03	4.14	13.03
13. CPCL, Manali	825.927	809.999	833.534	455.103	7768.843	6668.974	7845.906	-2.82	-15.00	-1.93
14. CPCL, Narimanam(CBR)	43.181	55.819	43.113	20.219	426.275	437.837	457.456	29.47	-4.29	29.27
Total CPCL	869.107	865.818	876.647	475.322	8195.117	7106.811	8303.362	-1.24	-14.41	-0.38
15. NRL, Numaligarh	234.803	241.851	217.952	233.033	2165.710	2068.354	2343.112	10.97	-11.73	3.00
16. MRPL, Mangalore	1348.515	1463.867	1179.283	1376.405	11237.430	11515.985	10636.592	24.13	8.27	8.55
17. ONGC, Tatipaka	5.270	6.712	3.196	7.003	49.729	51.585	41.565	110.04	24.11	27.37
B. Joint Venture Sub Total	1177.243	1268.932	1241.628	1302.229	10942.234	13288.862	10381.242	2.20	28.01	7.79
18. BORL Bina	457.500	576.076	536.711	451.083	3843.000	4799.623	4852.079	7.33	-1.08	25.92
19. HMEL, GGSR, Bhatinda	719.743	692.856	704.917	851.146	7099.234	8489.238	5529.164	-1.71	53.54	-3.74
C. Private Sector	7269.146	8048.985	7346.651	8139.376	74166.118	76395.162	75782.163	9.56	0.81	10.73
1. RIL, Jamnagar	2505.043	2743.946	2505.043	2831.424	26178.241	27158.930	26178.566	9.54	3.74	9.54
2. RIL (SEZ)	3124.998	3618.127	3124.998	3553.169	33060.810	34200.228	33060.810	15.78	3.45	15.78
Total RIL	5630.041	6362.073	5630.041	6384.593	59239.051	61359.159	59239.375	13.00	3.58	13.00
3. Essar Oil Ltd.(EOL), Vadinar	1639.105	1686.912	1716.610	1754.783	14927.067	15036.003	16542.788	-1.73	-9.11	2.92
Total Refinery (A+B+C)	18685.897	20114.175	18692.446	19680.552	180347.118	187445.666	181033.830	7.61	3.54	7.64
II. Production of Petroleum Products by Fractionators										
ONGC	294.030	231.387	207.468	269.930	2714.676	2384.948	2268.146	11.53	5.15	-21.31
OIL	4.000	3.574	3.939	3.738	36.200	33.928	35.861	-9.27	-5.39	-10.65
GAIL	99.437	72.021	110.377	96.950	981.541	901.221	1088.329	-34.75	-17.19	-27.57
D. Total Fractionators	397.467	306.982	321.784	370.618	3732.417	3320.097	3392.336	-4.60	-2.13	-22.77
Grand Total (A+B+C+D)	19083.365	20421.157	19014.230	20051.170	184079.535	190765.762	184426.166	7.40	3.44	7.01

Note: Totals may not tally due to rounding off figures.

*: Provisional.

**: Revised