

Government of India
Ministry of Petroleum and Natural Gas
Economics & Statistics Division

New Delhi
Dated the 21st March, 2017

Monthly Production Report
February 2017

Crude Oil

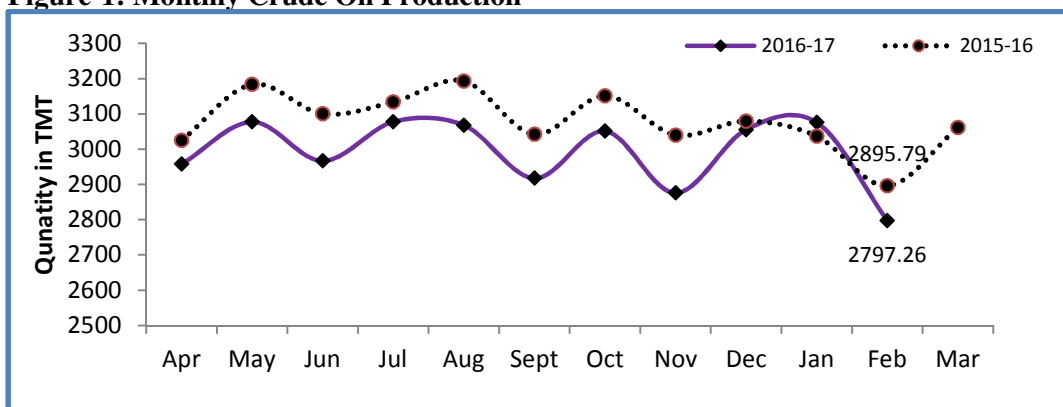
- Crude oil production¹ during February, 2017 was 2797.26 TMT which is 5.37% lower than target and 3.40% lower when compared with February 2016. Cumulative crude oil production during April, 2016 - February, 2017 was 32918 TMT which is 2.58% and 2.84% lower than target and production during corresponding period of last year respectively. Unit-wise and state-wise crude oil production is given at Annexure-I. Unit-wise crude oil production for the month of February, 2017 and cumulatively for the period April, 2016 - February, 2017 vis-à-vis same period of last year has been shown in Table-1 and month-wise in Figure-1.

Table-1: Crude Oil Production (in TMT)

Oil Company	Target	February (Month)				April-February (Cumulative)			
	2016-17 (Apr-Mar)	2016-17		2015-16	% over last year	2016-17		2015-16	% over last year
		Target	Prod.*	Prod.		Target	Prod.*	Prod.	
ONGC	22766.00	1830.80	1741.31	1779.85	97.83	20722.17	20286.65	20490.53	99.00
OIL	3480.00	300.77	260.32	246.21	105.73	3135.75	2964.83	2957.19	100.26
PSC Fields	10839.32	824.58	795.64	869.73	91.48	9930.47	9666.53	10432.56	92.66
Total	37085.32	2956.15	2797.26	2895.79	96.60	33788.39	32918.00	33880.28	97.16

*: Provisional

Figure-1: Monthly Crude Oil Production



¹ Including condensate

Unit-wise production details with reasons for shortfall have been given in following sub-sections:

1.1 Crude oil production by ONGC during February, 2017 was 1741.31 TMT which is 4.89% lower than the monthly target and 2.17% lower when compared with February, 2016. Cumulative crude oil production by ONGC during April, 2016 - February, 2017 was 20286.65 TMT which is 2.10% lower than target for the period and 1.0% lower than production during corresponding period of last year. Reasons for shortfall in production are as under:

- Delay in deployment of MOPU-Sagar Samrat.
- Delay in implementation of “Development of Western Periphery of MHS (ZC)” Project.
- Natural decline in matured fields of Western Offshore.
- GEB Power shutdown in Ahmedabad and Mehsana.
- Ceasure of wells in North Kadi & Laghnaj fields and closure of high water cut wells.
- Assam: ASEB power shutdown.

1.2 Crude oil production by OIL during February, 2017 was 260.32 TMT which is 13.45% lower than monthly target but 5.73% higher than production in February, 2016. Cumulative crude oil production by OIL during April, 2016 - February, 2017 was 2964.83 TMT which is 5.45% lower than target for the period but 0.26% higher than production during corresponding period of last year. Shortfall in production was mainly due to less than planned contribution from high producing areas like Greater Hapjan, Shalmari and Moran fields primarily on account of rise in water cut.

1.3 Crude oil production by Pvt/JVs during February, 2017 was 795.64 TMT which is 3.51% lower than the monthly target and 8.52% lower than February, 2016. Cumulative crude oil production by Pvt/JVs during April, 2016 - February, 2017 was 9666.53 TMT which is 2.66% lower than target for the period and 7.34% lower than the production during corresponding period of last year. Reasons for shortfall in production are as under:

- RJ-ON-90/1: Less production from Mangala as one power fluid pump tripped on 21.02.2017. Few high water cut wells closed at Mangala, poor reservoir performance of Bhagyam
- CY-ONN-2002/2: Under Test Production
- Underperformance of KG- OSN-2001/3
- Natural Decline in CB-OS/2 and Panna-Mukta

Natural Gas

2 Natural gas production during February, 2017 was 2522.54 MMSCM which is 9.95% lower than the target for the month and 1.66% lower when compared with February, 2016.

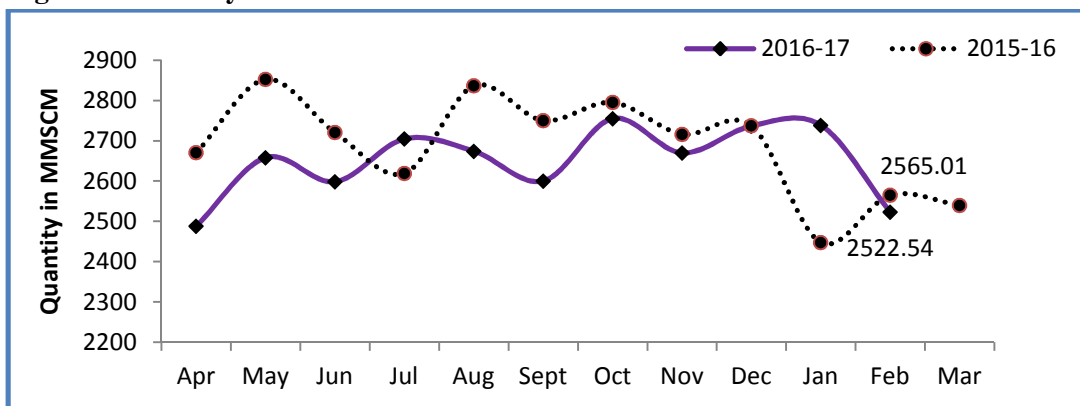
Cumulative natural gas production during April, 2016 - February, 2017 was 29146.41 MMSCM which is 5.99% lower than target for the period and 1.90% lower than the production during corresponding period of last year. Unit-wise and state-wise natural gas production is given at Annexure-II. Unit-wise natural gas production for the month of February, 2017 and cumulatively for the period April, 2016 -February, 2017 vis-à-vis same period of last year has been shown in Table-2 and month-wise in Figure-2.

Table-2: Natural Gas Production (MMSCM)

Oil Company	Target	February (Month)				April-February (Cumulative)			
	2016-17 (Apr-Mar)	2016-17		2015-16	% over last year	2016-17		2015-16	% over last year
		Target	Prod.*	Prod.		Target	Prod.*	Prod.	
ONGC	22743.43	1883.14	1773.12	1730.87	102.44	20647.66	20115.67	19533.87	102.98
OIL	2950.03	211.70	225.18	218.48	103.07	2706.60	2685.53	2584.26	103.92
PSC Fields	8425.44	706.52	524.24	615.66	85.15	7648.47	6345.21	7591.40	83.58
Total	34118.90	2801.36	2522.54	2565.01	98.34	31002.73	29146.41	29709.53	98.10

*: Provisional

Figure-2: Monthly Natural Gas Production



- 2.1 Natural gas production by ONGC during February, 2017 was 1773.12 MMSCM which is 5.84% lower than the monthly target but 2.44% higher when compared with February, 2016. Cumulative natural gas production by ONGC during April, 2016 - February, 2017 was 20115.67 MMSCM which is 2.58% lower than the cumulative target but 2.98% higher than the production during the corresponding period of the last year. Shortfall in production was mainly due to less than planned production from Daman & C-26 Cluster due to evacuation constraint (export lines to TCPP platform are not completed) and natural decline from Bassein field
- 2.2 Natural gas production by OIL during February, 2017 was 225.18 MMSCM which is 6.37% higher than the monthly target and 3.07% higher than February, 2016. Cumulative natural gas production by OIL during April, 2016 - February, 2017 was 2685.53 MMSCM which is 0.78% lower than the cumulative target but 3.92% higher than the production during the corresponding period of last year.

2.3 Natural gas production by Pvt/JVs during February, 2017 was 524.24 MMSCM which is 25.80% lower than the monthly target and 14.85% lower when compared with February, 2016. Cumulative natural gas production by Pvt/JVs during April, 2016 - February, 2017 was 6345.21 MMSCM which is 17.04% lower than the cumulative target and 16.42% lower than the production during the corresponding period of last year. Reasons for shortfall in production are as under:

- Underperformance of wells in KG- OSN-2001/3
- Underperformance of Sohagpur West CBM block, closure of few wells for maintenance in Raniganj East CBM block.
- Closure of 2 wells in D1D3 field in KG-DWN-98/3.
- RJ-ON-90/1: Less production from Mangala as one power fluid pump tripped on 21.02.2017. Few high water cut wells closed at Mangala, poor reservoir performance of Bhagyam

Refinery Production (in terms of crude oil processed)

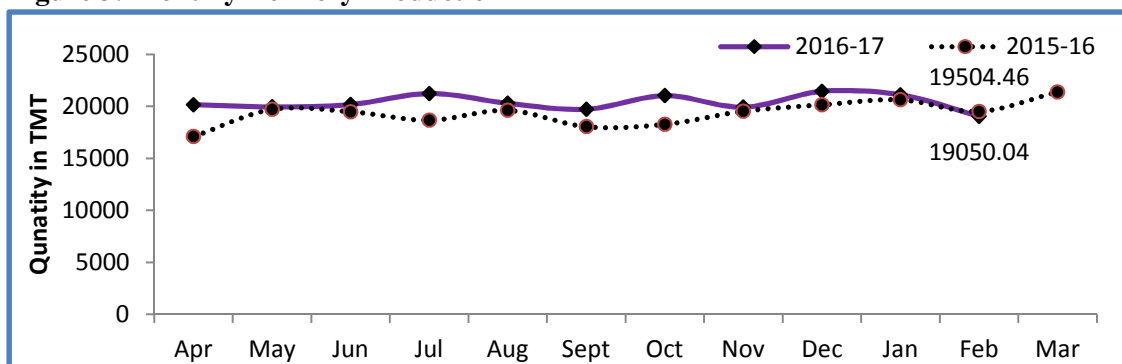
3 Refinery production during February, 2017 was 19050.04 TMT which is 1.15% higher than the target for the month but 2.33% lower when compared with February, 2016. Cumulative production during April, 2016-February, 2017 was 224055 TMT which is 1.89% higher than the target for the period and 5.95% higher than the production during corresponding period of last year. Unit-wise production is given at Annexure-III. Company-wise production for the month of February, 2017 and cumulatively for the period April, 2016 - February, 2017 vis-à-vis same period of last year has been shown in Table-3 and month-wise in Figure-3.

Table 3: Refinery Production (TMT)

Oil Company	Target	February (Month)				April-February (Cumulative)			
	2016-17 (Apr-Mar)	2016-17		2015-16	% over last year	2016-17		2015-16	% over last year
		Target	Prod.*	Prod.		Target	Prod.*	Prod.	
PSUS	135565.03	10352.21	10726.35	11066.46	96.93	123743.95	125254.79	115135.54	108.79
IOCL	65100.00	5181.81	5336.44	5137.89	103.86	59341.91	58910.47	52506.52	112.20
BPCL	25250.15	1975.87	2022.21	1991.94	101.52	23166.48	23558.35	21985.16	107.16
HPCL	16800.29	1199.53	1456.29	1478.51	98.50	15307.29	16224.23	15618.12	103.88
CPCL	10250.00	536.19	471.35	922.29	51.11	9438.89	9499.83	8684.79	109.38
NRL	2670.00	200.17	210.12	203.01	103.50	2448.83	2464.19	2284.12	107.88
MRPL	15450.00	1255.00	1222.97	1325.63	92.26	14000.00	14519.53	13997.16	103.73
ONGC	44.59	3.65	6.97	7.19	96.89	40.53	78.19	59.67	131.04
JVs	15000.00	1243.98	1315.90	1201.80	109.49	14051.44	15532.79	15540.61	99.95
BORL	6000.00	525.00	480.66	502.20	95.71	5475.00	5741.39	5763.87	99.61
HMEL	9000.00	718.98	835.24	699.60	119.39	8576.44	9791.40	9776.75	100.15
Private	89852.65	7238.11	7007.80	7236.20	96.84	82095.89	83267.41	80805.57	103.05
RIL	69561.01	5566.21	5412.44	5566.21	97.24	63476.14	64109.33	63476.14	101.00
EOL	20291.64	1671.90	1595.36	1669.99	95.53	18619.74	19158.09	17329.43	110.55
TOTAL	240417.68	18834.31	19050.04	19504.46	97.67	219891.28	224055.00	211481.73	105.95

*: Provisional

Figure 3: Monthly Refinery Production



3.1 PSU Refineries' production during February, 2017 was 10726.35 TMT which is 3.61% higher than the target for the month but 3.07% lower than the production achieved in the corresponding month of last year. Cumulative production by PSU refineries during April, 2016 - February, 2017 was 125254.79 TMT which is 1.22% higher than the target for the period and 8.79% higher than the production during corresponding period of last year. Reasons for shortfall of refinery production in some PSU refineries are as under:

- ❖ IOCL, Paradip: Throughput is lower due to coke upliftment issue.
- ❖ IOCL, Haldia: Throughput is lower due to VGO stock build-up.
- ❖ IOCL, Digboi / Guwahati: Lower availability of Assam crude.
- ❖ BPCL, Kochi: DHDT was run at a lower charge due to non-availability of hydrogen from BOO and Build-up of VGO.
- ❖ CPCL, Manali: Deferred shutdown of Manali Refinery due to OHCU shutdown.
- ❖ CPCL, CBR: Evacuation constraints in CBR refinery.
- ❖ MRPL, Mangalore: Throughput lower due to shutdown taken in CDU -1 to repair heater coil supports.

3.2 Production in JV refineries during February, 2017 was 1315.90 TMT which is 5.78% higher than the target for the month and 9.49% higher than the production achieved in the corresponding month of last year. Cumulative production by JVs refineries during April, 2016 - February, 2017 was 15532.79 TMT which is 10.54% higher than the target for the period but marginally lower (0.05%) than the production during corresponding period of last year.

3.3 Production in private refineries during February, 2017 was 7007.80 TMT which is 3.18% lower than the target for the month and 3.16% lower when compared with February, 2016. Cumulative production by private refineries during April, 2016 - February, 2017 was 83267.41 TMT which is 1.43% higher than the target for the period and 3.05% higher than the production during corresponding period of last year.

3.4 Refinery-wise details of the capacity utilization and production of petroleum products during the month of February, 2017 and cumulatively for the period April, 2016 - February, 2017 vis-à-vis April, 2015 - February, 2016 are given at Annexures-IV and V respectively.

Annexure-I

(Para 1)

MINISTRY OF PETROLEUM & NATURAL GAS

Crude Oil Production during the month of February, 2017 and cumulatively for the period April-February, 2016-17 vis-a-vis April-February, 2015-16

(in TMT)

Name of Undertaking/Unit/State	Planned production during the month	Production during the			Cumulative Production (April-February)			% variation over last year		% variation during the month under review over planned production
		Month under review *	Corresponding month of last year **	Preceding month of current year	Planned production during current year	Actual production during current year *	Actual production during corresponding period of last year	During the month under review	Upto the end of the period	
(1)	(2)	(3)	(4)	(5)	(5)	(6)	(7)	(8)	(9)	(10)
1. ONGC	1830.798	1741.305	1779.847	1916.250	20722.166	20286.645	20490.534	-2.17	-1.00	-4.89
Onshore	463.513	461.479	469.008	511.143	5426.297	5415.707	5311.606	-1.61	1.96	-0.44
Andhra Pradesh	22.564	21.756	22.405	23.246	257.318	248.162	271.672	-2.90	-8.65	-3.58
Assam ^	78.208	73.549	75.926	81.717	904.849	871.101	882.167	-3.13	-1.25	-5.96
Gujarat	343.911	345.704	350.603	385.023	4054.560	4081.738	3930.460	-1.40	3.85	0.52
Tamil Nadu	18.830	20.470	20.074	21.157	209.570	214.706	227.307	1.97	-5.54	8.71
Offshore	1367.285	1279.826	1310.839	1405.107	15295.869	14870.938	15178.928	-2.37	-2.03	-6.40
Eastern Offshore	2.948	1.526	2.597	1.626	23.150	14.741	25.020	-41.24	-41.08	-48.24
Western Offshore	1247.023	1168.534	1196.733	1290.078	13982.297	13615.257	13961.644	-2.36	-2.48	-6.29
Condensates	117.314	109.766	111.509	113.403	1290.422	1240.940	1192.264	-1.56	4.08	-6.43
2. OIL (Onshore)	300.772	260.319	246.212	274.056	3135.753	2964.832	2957.185	5.73	0.26	-13.45
Assam	300.299	259.738	245.582	273.415	3129.558	2957.813	2952.006	5.76	0.20	-13.51
Arunachal Pradesh	0.473	0.581	0.630	0.641	6.195	7.019	5.179	-7.78	35.53	22.83
3. DGH (Private / JVs)	824.576	795.636	869.727	885.101	9930.468	9666.525	10432.563	-8.52	-7.34	-3.51
Onshore	675.364	632.142	682.315	702.538	7997.965	7696.021	8085.721	-7.35	-4.82	-6.40
Arunachal Pradesh	4.021	3.599	4.190	3.884	47.616	43.672	46.459	-14.11	-6.00	-10.49
Gujarat	15.562	10.847	11.283	11.039	167.280	125.855	136.851	-3.86	-8.04	-30.30
Rajasthan	647.372	612.413	665.641	682.151	7721.988	7486.297	7896.750	-8.00	-5.20	-5.40
Tamil Nadu	8.410	5.283	1.201	5.464	61.081	40.197	5.661	-	-	-
Offshore	149.212	163.494	187.412	182.563	1932.503	1970.504	2346.842	-12.76	-16.04	9.57
Eastern Offshore	69.193	75.696	77.533	81.830	873.393	885.003	1146.652	-2.37	-22.82	9.40
Gujarat Offshore	20.409	28.116	32.224	32.558	311.400	350.180	376.807	-12.75	-7.07	37.76
Western Offshore	59.610	59.682	77.655	68.175	747.710	735.321	823.383	-23.14	-10.70	0.12
GRAND TOTAL (1+2+3)	2956.146	2797.260	2895.786	3075.407	33788.387	32918.002	33880.282	-3.40	-2.84	-5.37
Onshore	1439.649	1353.940	1397.535	1487.737	16560.015	16076.560	16354.512	-3.12	-1.70	-5.95
Offshore	1516.497	1443.320	1498.251	1587.670	17228.372	16841.442	17525.770	-3.67	-3.90	-4.83

Note: Totals may not tally due to rounding off.

*: Provisional.

**: Revised

^: Includes crude oil production of Tripura

Reasons for shortfall are indicated in the note.

MINISTRY OF PETROLEUM & NATURAL GAS

Natural Gas Production during the month of February, 2017 and cumulatively for the period April-February, 2016-17 vis-a-vis April-February, 2015-16

(in MMSCM)

Name of Undertaking/Unit/State	Planned production during the month	Production during the			Cumulative Production (April-February)			% variation over last year		% variation during the month under review over planned production
		Month under review *	Corresponding month of last year **	Preceding month of current year **	Planned production during current year	Actual production during current year *	Actual production during corresponding period of last year **	During the month under review	Upto the end of the period	
(1)	(2)	(3)	(4)	(5)	(5)	(6)	(7)	(8)	(9)	(10)
1. ONGC	1883.141	1773.120	1730.869	1922.265	20647.661	20115.671	19533.875	2.44	2.98	-5.84
Onshore	423.559	437.969	388.313	461.305	4797.415	4718.635	4334.356	12.79	8.87	3.40
Andhra Pradesh	71.095	71.467	57.046	79.234	722.783	786.920	556.978	25.28	41.28	0.52
Assam	33.224	33.732	32.609	36.373	388.179	393.036	368.111	3.44	6.77	1.53
Gujarat	107.772	128.500	113.364	136.565	1322.773	1348.142	1272.577	13.35	5.94	19.23
Rajasthan	0.384	0.506	0.182	0.854	4.575	4.290	4.769	178.02	-10.05	31.92
Tamil Nadu	90.384	79.504	74.555	88.276	1018.974	889.689	922.002	6.64	-3.50	-12.04
Tripura	120.700	124.260	110.557	120.003	1340.131	1296.558	1209.920	12.39	7.16	2.95
Offshore	1459.582	1335.151	1342.556	1460.960	15850.246	15397.036	15199.518	-0.55	1.30	-8.53
Eastern Offshore	57.280	50.717	22.047	57.043	533.986	414.241	204.691	130.04	102.37	-11.46
Western Offshore	1402.302	1284.434	1320.509	1403.917	15316.260	14982.795	14994.827	-2.73	-0.08	-8.41
2. OIL	211.697	225.179	218.477	248.793	2706.595	2685.527	2584.255	3.07	3.92	6.37
Assam	197.279	207.220	201.129	229.214	2508.651	2460.763	2388.456	3.03	3.03	5.04
Arunachal Pradesh	0.978	0.910	0.932	1.005	12.624	10.857	10.436	-2.35	4.03	-6.96
Rajasthan	13.440	17.050	16.416	18.574	185.320	213.908	185.364	3.86	15.40	26.86
3. DGH (Private / JVs)	706.523	524.240	615.660	567.428	7648.472	6345.208	7591.401	-14.85	-16.42	-25.80
Onshore	106.526	85.833	95.406	89.328	1141.176	1056.867	1136.320	-10.03	-6.99	-19.43
Assam	6.343	0.000	0.000	0.000	20.390	0.000	0.000	0.00	0.00	0.00
Arunachal Pradesh	0.680	1.330	1.341	1.502	8.051	14.232	16.843	-0.82	-15.50	95.59
Gujarat	4.465	7.024	6.888	7.206	68.396	82.464	83.433	1.97	-1.16	57.31
Rajasthan	94.106	76.754	87.067	79.929	1037.486	955.274	1035.543	-11.84	-7.75	-18.44
Tamil Nadu	0.932	0.725	0.110	0.691	6.853	4.897	0.501	-	-	-
CBM	141.871	45.510	32.821	53.583	1091.704	519.738	356.648	38.66	45.73	-67.92
Jharkhand (CBM)	0.248	0.284	0.201	0.322	2.965	2.787	1.797	41.29	55.09	14.40
Madhya Pradesh (CBM)	68.370	0.650	0.274	0.783	395.990	5.410	1.254	137.23	331.42	-99.05
West Bengal (CBM)	73.253	44.576	32.346	52.478	692.749	511.541	353.597	37.81	44.67	-39.15
Offshore	458.126	392.897	487.433	424.517	5415.593	4768.603	6098.433	-19.39	-21.81	-14.24
Eastern Offshore	315.863	240.642	306.429	252.073	3763.768	2952.125	4041.118	-21.47	-26.95	-23.81
Gujarat Offshore	3.003	5.548	5.680	7.162	35.825	74.822	61.786	-2.32	21.10	84.73
Western Offshore	139.260	146.707	175.324	165.282	1616.000	1741.656	1995.529	-16.32	-12.72	5.35
TOTAL (1+2+3)	2801.361	2522.539	2565.006	2738.486	31002.728	29146.406	29709.531	-1.66	-1.90	-9.95
CBM	141.871	45.510	32.821	53.583	1091.704	519.738	356.648	38.66	45.73	-67.92
Onshore	741.783	748.981	702.196	799.426	8645.186	8461.029	8054.932	6.66	5.04	0.97
Offshore	1917.708	1728.048	1829.989	1885.477	21265.839	20165.639	21297.951	-5.57	-5.32	-9.89

Note: Totals may not tally due to rounding off. *: Provisional. **: Revised

CBM: Coal Bed Methane

Reasons for shortfall are indicated in the note.

MINISTRY OF PETROLEUM & NATURAL GAS

Refinery Production (in terms of crude oil processed) during the month of February, 2017 and cumulatively for the period April-February, 2016-17 vis-à-vis April-February, 2015-16

(in TMT)

Name of Undertaking/Unit	Planned production during the month	Production during the			Cumulative Production			% variation over last year		% variation during the month under review over planned production
		Month under review *	Corresponding month of last year	Preceding month of current year	(April-February)			During the month under review	Upto the end of the period	
					Planned production during current year	Actual production during current year *	Actual production during corresponding period of last year			
(1)	(2)	(3)	(4)	(5)	(5)	(6)	(7)	(8)	(9)	(10)
A. Public Sector	10352.209	10726.348	11066.459	11760.822	123743.948	125254.790	115135.545	-3.07	8.79	3.61
1. IOC, Guwahati	79.000	67.884	37.799	65.235	906.400	784.922	818.880	79.59	-4.15	-14.07
2. IOC, Barauni	481.001	487.235	506.437	554.047	5667.398	5968.326	5977.994	-3.79	-0.16	1.30
3. IOC, Gujarat	979.138	1028.183	1177.495	1007.133	12256.866	12759.652	12551.368	-12.68	1.66	5.01
4. IOC, Haldia	615.058	624.213	640.624	550.093	7134.908	6973.323	7120.190	-2.56	-2.06	1.49
5. IOC, Mathura	601.999	721.468	739.980	786.215	7857.000	8400.152	8046.074	-2.50	4.40	19.85
6. IOC, Digboi	52.000	42.016	44.029	44.508	581.000	480.042	502.830	-4.57	-4.53	-19.20
7. IOC, Panipat	1194.009	1247.567	1296.625	1330.366	13875.990	14243.606	13936.350	-3.78	2.20	4.49
8. IOC, Bongaigaon	181.008	188.788	191.727	206.369	2150.352	2275.365	2239.758	-1.53	1.59	4.30
9. IOC, Paradip	998.600	929.088	503.170	926.100	8912.000	7025.084	1313.079	-	-	-6.96
Total IOC	5181.813	5336.442	5137.886	5470.066	59341.914	58910.472	52506.523	3.86	12.20	2.98
10. BPCL, Mumbai	711.600	921.007	1119.300	1137.954	12474.033	12855.608	12197.052	-17.72	5.40	29.43
11. BPCL, Kochi	1264.267	1101.208	872.640	1059.207	10692.450	10702.745	9788.105	26.19	9.34	-12.90
Total BPCL	1975.867	2022.215	1991.940	2197.161	23166.483	23558.353	21985.158	1.52	7.16	2.35
12. HPCL, Mumbai	469.800	683.974	695.799	753.532	7114.775	7750.293	7237.482	-1.70	7.09	45.59
13. HPCL, Visakh	729.726	772.314	782.712	818.578	8192.518	8473.933	8380.638	-1.33	1.11	5.84
Total HPCL	1199.526	1456.288	1478.510	1572.110	15307.293	16224.226	15618.121	-1.50	3.88	21.41
14. CPCL, Manali	490.000	433.916	867.669	820.377	8890.000	9020.017	8198.977	-49.99	10.01	-11.45
15. CPCL, CBR	46.189	37.432	54.618	41.407	548.893	479.809	485.815	-31.47	-1.24	-18.96
Total CPCL	536.189	471.348	922.287	861.784	9438.893	9499.826	8684.792	-48.89	9.38	-12.09
16. NRL, Numaligarh	200.166	210.121	203.014	282.934	2448.834	2464.194	2284.124	3.50	7.88	4.97
17. MRPL, Mangalore	1255.000	1222.965	1325.628	1369.064	14000.000	14519.532	13997.162	-7.74	3.73	-2.55
18. ONGC, Tatipaka	3.648	6.969	7.193	7.703	40.532	78.188	59.665	-3.11	31.04	91.06
B. Joint Venture Sector	1243.983	1315.900	1201.799	1519.979	14051.441	15532.792	15540.613	9.49	-0.05	5.78
19. BORL, Bina	525.000	480.662	502.203	582.805	5475.000	5741.394	5763.867	-4.29	-0.39	-8.45
20. HMEL, GGSR, Bhatinda	718.983	835.238	699.596	937.174	8576.441	9791.398	9776.745	19.39	0.15	16.17
C. Private Sector	7238.115	7007.795	7236.202	7827.257	82095.887	83267.413	80805.573	-3.16	3.05	-3.18
21. RIL, Jamnagar	2578.040	2504.839	2578.040	2774.605	29612.917	30038.365	29612.917	-2.84	1.44	-2.84
22. RIL, SEZ	2988.174	2907.598	2988.174	3280.459	33863.227	34070.962	33863.227	-2.70	0.61	-2.70
Total RIL	5566.214	5412.437	5566.214	6055.064	63476.144	64109.327	63476.144	-2.76	1.00	-2.76
23. EOL, Vadinar	1671.901	1595.358	1669.988	1772.193	18619.743	19158.086	17329.429	-4.47	10.55	-4.58
TOTAL(A+B+C)	18834.307	19050.043	19504.460	21108.058	219891.276	224054.995	211481.730	-2.33	5.95	1.15

Note: Totals may not tally due to rounding off. *: Provisional.

Reasons for shortfall are indicated in the note.

MINISTRY OF PETROLEUM & NATURAL GAS

(Para 3.4)

Refinery-wise Capacity Utilisation during the month of February, 2017 and cumulatively for the period April-February, 2016-17 vis-à-vis April-February, 2015-16

(in TMT)

Name of Undertaking/Unit	February,2017			February,2016			Cumulative (April - February)					
	Prorated Installed Capacity	Actual Crude T'put *	% Utilisation of Installed Capacity	Prorated Installed Capacity	Actual Crude T'put	% Utilisation of Installed Capacity	2016-17			2015-16		
							Prorated Installed Capacity	Actual Crude T'put *	% Utilisation of Installed Capacity	Prorated Installed Capacity	Actual Crude T'put	% Utilisation of Installed Capacity
(1)	(2)	(3)	(4)	(5)	(6)	(7)	(8)	(9)	(10)	(11)	(12)	(13)
A. Public Sector	10361.00	10726.35	103.53	9513.00	11066.46	116.33	123595.00	125254.79	101.34	109896.00	115135.54	104.77
1. IOC, Guwahati	77.00	67.88	88.16	79.00	37.80	47.85	915.00	784.92	85.78	915.00	818.88	89.50
2. IOC, Barauni	460.00	487.24	105.92	475.00	506.44	106.62	5490.00	5968.33	108.71	5492.00	5977.99	108.85
3. IOC, Gujarat	1051.00	1028.18	97.83	1086.00	1177.50	108.42	12536.00	12759.65	101.78	12540.00	12551.37	100.09
4. IOC, Haldia	575.00	624.21	108.56	594.00	640.62	107.85	6863.00	6973.32	101.61	6865.00	7120.19	103.72
5. IOC, Mathura	614.00	721.47	117.50	634.00	739.98	116.72	7321.00	8400.15	114.74	7322.00	8046.07	109.89
6. IOC, Digboi	50.00	42.02	84.03	52.00	44.03	84.67	595.00	480.04	80.68	595.00	502.83	84.51
7. IOC, Panipat	1151.00	1247.57	108.39	1189.00	1296.63	109.05	13726.00	14243.61	103.77	13730.00	13936.35	101.50
8. IOC, Bongaigaon	180.00	188.79	104.88	186.00	191.73	103.08	2150.00	2275.37	105.83	2151.00	2239.76	104.13
9. IOC, Paradip	1151.00	929.09	80.72	0.00	503.17	0.00	13726.00	7025.08	51.18	0.00	1313.08	0.00
Total IOC	5308.00	5336.44	100.54	4295.00	5137.89	119.62	63323.00	58910.47	93.03	49609.00	52506.52	105.84
10. BPCL, Mumbai	921.00	921.01	100.00	951.00	1119.30	117.70	10981.00	12855.61	117.07	10984.00	12197.05	111.04
11. BPCL, Kochi	729.00	1101.21	151.06	753.00	872.64	115.89	8693.00	10702.75	123.12	8695.00	9788.11	112.57
Total BPCL	1649.00	2022.21	122.63	1704.00	1991.94	116.90	19674.00	23558.35	119.74	19679.00	21985.16	111.72
12. HPCL, Mumbai	499.00	683.97	137.07	515.00	695.80	135.11	5948.00	7750.29	130.30	5949.00	7237.48	121.66
13. HPCL, Visakh	637.00	772.31	121.24	658.00	782.71	118.95	7595.00	8473.93	111.57	7597.00	8380.64	110.32
Total HPCL	1135.00	1456.29	128.31	1173.00	1478.51	126.05	13543.00	16224.23	119.80	13546.00	15618.12	115.30
14. CPCL, Manali	805.00	433.92	53.90	832.00	867.67	104.29	9608.00	9020.02	93.88	9611.00	8198.98	85.31
15. CPCL, CBR	77.00	37.43	48.61	79.00	54.62	69.14	915.00	479.81	52.44	915.00	485.82	53.09
Total CPCL	882.00	471.35	53.44	911.00	922.29	101.24	10523.00	9499.83	90.28	10526.00	8684.79	82.51
16. NRL, Numaligarh	230.00	210.12	91.36	238.00	203.01	85.30	2745.00	2464.19	89.77	2746.00	2284.12	83.18
17. MRPL, Mangalore	1151.00	1222.97	106.25	1189.00	1325.63	111.49	13726.00	14519.53	105.78	13730.00	13997.16	101.95
18. ONGC, Tatipaka	5.00	6.97	139.39	5.00	7.19	143.86	60.00	78.19	130.31	60.00	59.67	99.44
B. Joint Venture Sector	1151.00	1315.90	114.33	1189.00	1201.80	101.08	13726.00	15532.79	113.16	13730.00	15540.61	113.19
19. BORL, Bina	460.00	480.66	104.49	475.00	502.20	105.73	5490.00	5741.39	104.58	5492.00	5763.87	104.95
20. HMEL, GGSR, Bhatinda	690.00	835.24	121.05	713.00	699.60	98.12	8236.00	9791.40	118.89	8238.00	9776.75	118.68
C. Private Sector	6137.00	7007.80	114.19	6339.00	7236.20	114.15	73205.00	83267.41	113.75	73224.00	80805.57	110.35
21. RIL, Jamnagar	2532.00	2504.84	98.93	2615.00	2578.04	98.59	30197.00	30038.36	99.47	30205.00	29612.92	98.04
22. RIL, SEZ	2071.00	2907.60	140.40	2139.00	2988.17	139.70	24707.00	34070.96	137.90	24713.00	33863.23	137.03
Total RIL	4603.00	5412.44	117.58	4754.00	5566.21	117.08	54904.00	64109.33	116.77	54918.00	63476.14	115.58
23. EOL, Vadinar	1534.00	1595.36	104.00	1585.00	1669.99	105.36	18301.00	19158.09	104.68	18306.00	17329.43	94.67
TOTAL(A+B+C)	17649.00	19050.04	107.94	17041.00	19504.46	114.46	210526.00	224055.00	106.43	196850.00	211481.73	107.43

*: Provisional.

MINISTRY OF PETROLEUM & NATURAL GAS

Production of Petroleum Products during the month of February 2017 and cumulatively for the period April-February, 2016-17 vis-à-vis April-February 2015-16

(in TMT)

Name of Undertaking/Unit	Planned production during the month	Production during the			Cumulative Production			% variation over last year		% variation during the month under review over planned production
		Month under review *	Corresponding month of last year	Preceding month of current year **	(April-February)			During the month under review	Upto the end of the period	
					Planned production during current year	Actual production during current year*	Actual production during corresponding period of last year**			
(1)	(2)	(3)	(4)	(5)	(5)	(6)	(7)	(8)	(9)	(10)
I. Refinery										
A. Public Sector	9762.874	10174.319	10568.470	10915.626	115850.386	117542.378	108569.455	-3.73	8.26	4.21
1. IOC, Guwahati	83.280	93.852	37.569	79.512	944.676	1007.631	997.940	149.81	0.97	12.69
2. IOC, Barauni	450.311	429.246	470.416	481.255	5228.990	5398.014	5543.653	-8.75	-2.63	-4.68
3. IOC, Gujarat	924.667	974.082	1137.555	867.623	11643.110	11920.449	12030.948	-14.37	-0.92	5.34
4. IOC, Haldia	569.810	563.641	598.972	522.294	6530.350	6317.726	6506.734	-5.90	-2.90	-1.08
5. IOC, Mathura	574.463	671.373	751.047	761.602	7617.918	8073.077	7858.149	-10.61	2.74	16.87
6. IOC, Digboi	52.542	42.060	44.374	46.892	582.914	490.023	483.970	-5.21	1.25	-19.95
7. IOC, Panipat	1198.026	1253.048	1360.878	1349.249	13835.162	14356.987	14050.654	-7.92	2.18	4.59
8. IOC, Bongaigaon	165.780	169.938	181.782	182.168	1972.814	2059.510	2041.097	-6.52	0.90	2.51
9. IOC, Paradip	902.300	797.099	317.951	817.283	7767.300	5874.033	551.438	-	-	-11.66
Total IOC	4921.180	4994.339	4900.544	5107.878	56123.235	55497.450	50064.583	1.91	10.85	1.49
10. BPCL, Mumbai	678.483	877.565	1082.597	1071.258	11960.184	12355.891	11661.256	-18.94	5.96	29.34
11. BPCL, Kochi	1174.790	1072.969	829.165	958.898	9841.291	10104.987	9273.614	29.40	8.96	-8.67
Total BPCL	1853.273	1950.534	1911.762	2030.156	21801.475	22460.878	20934.870	2.03	7.29	5.25
12. HPCL, Mumbai	434.191	657.064	653.151	698.448	6569.175	7239.926	6741.895	0.60	7.39	51.33
13. HPCL, Visakh	670.857	725.215	754.850	755.926	7538.878	7774.809	7734.364	-3.93	0.52	8.10
Total HPCL	1105.048	1382.279	1408.001	1454.374	14108.053	15014.735	14476.259	-1.83	3.72	25.09
14. CPCL, Manali	455.030	406.371	821.767	673.819	8052.540	8243.799	7490.741	-50.55	10.05	-10.69
15. CPCL, CBR	46.506	37.428	54.562	41.396	552.751	481.261	492.399	-31.40	-2.26	-19.52
Total CPCL	501.536	443.799	876.329	715.215	8605.291	8725.060	7983.140	-49.36	9.29	-11.51
16. NRL, Numaligarh	198.838	205.235	201.476	283.699	2426.833	2437.918	2272.675	1.87	7.27	3.22
17. MRPL, Mangalore	1179.400	1191.401	1263.293	1316.862	12745.500	13331.372	12779.277	-5.69	4.32	1.02
18. ONGC, Tatipaka	3.600	6.732	7.065	7.442	40.000	74.964	58.651	-4.71	27.81	87.00
B. Joint Venture Sector	1160.784	1277.276	1091.976	1364.452	13131.411	14459.782	14380.838	16.97	0.55	10.04
19. BOREL, Bina	484.100	462.077	480.325	549.253	5049.100	5239.822	5279.948	-3.80	-0.76	-4.55
20. HMEL, GGSR, Bhatinda	676.684	815.199	611.652	815.199	8082.311	9219.960	9100.890	33.28	1.31	20.47
C. Private Sector	7572.744	7261.025	7493.025	7991.632	85304.673	85568.449	83888.185	-3.10	2.00	-4.12
21. RIL, Jamnagar	2533.743	2426.904	2533.743	2900.119	29692.672	29883.508	29692.672	-4.22	0.64	-4.22
22. RIL, SEZ	3423.621	3287.842	3423.621	3508.030	37623.849	37384.015	37623.849	-3.97	-0.64	-3.97
Total RIL	5957.364	5714.746	5957.364	6408.149	67316.521	67267.523	67316.521	-4.07	-0.07	-4.07
23. EOL, Vadinar	1615.380	1546.279	1535.661	1583.483	17988.152	18300.926	16571.664	0.69	10.44	-4.28
TOTAL(A+B+C)	18496.402	18712.620	19153.471	20271.710	214286.470	217570.608	206838.479	-2.30	5.19	1.17
II. Fractionators										
ONGC	256.890	253.841	268.757	288.359	2720.246	2865.106	2653.697	-5.55	7.97	-1.19
OIL	3.550	2.716	3.501	3.048	38.150	31.660	37.429	-22.42	-15.41	-23.49
GAIL	82.615	88.641	97.618	100.144	933.243	1020.274	998.840	-9.20	2.15	7.29
D. Total Fractionators	343.055	345.198	369.876	391.551	3691.639	3917.040	3689.966	-6.67	6.15	0.62
Grand Total (A+B+C+D)	18839.457	19057.818	19523.347	20663.262	217978.109	221487.648	210528.445	-2.38	5.21	1.16

Note: Totals may not tally due to rounding off.

*: Provisional.

**:Revised