

Government of India
Ministry of Petroleum and Natural Gas
Economics & Statistics Division

New Delhi
Dated the 19th January, 2017

Monthly Production Report
December 2016

Crude Oil

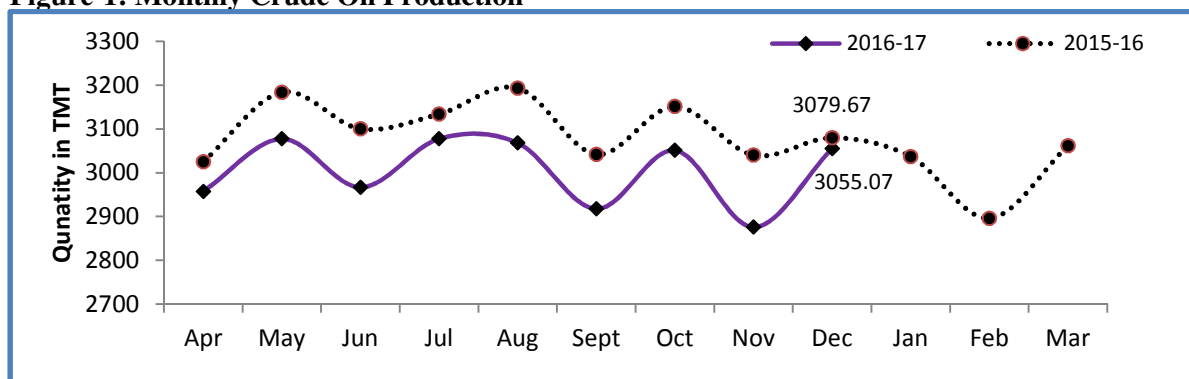
1. Crude oil production¹ during December 2016 was 3055.07 TMT which is 3.15% and 0.80% lower than target and production achieved in December 2015 respectively. Cumulative crude oil production during April-December, 2016 was 27045.34 TMT which is 1.92% and 3.23% lower than target and production during corresponding period of last year respectively. Unit-wise and state-wise crude oil production is given at Annexure-I. Unit-wise crude oil production for the month of December, 2016 and cumulatively for the period April-December, 2016 vis-à-vis same period of last year has been shown in Table-1 and month-wise in Figure-1.

Table-1: Crude Oil Production (in TMT)

Oil Company	Target	December (Month)				April-December (Cumulative)			
	2016-17 (Apr-Mar)	2016-17		2015-16	% over last year	2016-17		2015-16	% over last year
		Target	Prod.*	Prod.		Target	Prod.*	Prod.	
ONGC	22766.00	1931.11	1904.60	1895.70	100.47	16872.80	16629.09	16879.30	98.52
OIL	3480.00	312.41	280.59	270.12	103.87	2513.21	2430.46	2450.61	99.18
PSC Fields	10839.32	911.03	869.89	913.85	95.19	8189.45	7985.79	8617.95	92.66
Total	37085.32	3154.55	3055.07	3079.67	99.20	27575.46	27045.34	27947.86	96.77

*: Provisional

Figure-1: Monthly Crude Oil Production



¹ Including condensate

Unit-wise production details with reasons for shortfall have been given in following sub-sections:

- 1.1 Crude oil production by ONGC during December, 2016 was 1904.60 TMT which is 1.37% lower than the monthly target but 0.47% higher when compared with December 2015. Cumulative crude oil production by ONGC during April-December, 2016 was 16629.09 TMT which is 1.44% lower than target for the period and 1.48% lower than production during corresponding period of last year. Shortfall in production was mainly due to less than planned production from marginal fields of Mumbai High and natural decline in matured fields of western offshore.
- 1.2 Crude oil production by OIL during December, 2016 was 280.59 TMT which is 10.18% lower than monthly target but 3.87% higher than production in December 2015. Cumulative crude oil production by OIL during April-December, 2016 was 2430.46 TMT which is 3.29% lower than target for the period and 0.82% lower than production during corresponding period of last year. Shortfall in production was mainly due to less than planned contribution from high producing areas like Greater Hapjan, Greater Chandmari fields & Naharkatiya fields on account of rise in water cut and less than envisaged contribution from newly drilled wells.
- 1.3 Crude oil production by Pvt/JVs during December 2016 was 869.89 TMT which is 4.52% lower than the monthly target and 4.81% lower than December, 2015. Cumulative crude oil production by Pvt/JVs during April-December, 2016 was 7985.79 TMT which is 2.49% lower than target for the period and 7.34% lower than the production during corresponding period of last year. Reasons for shortfall in production are as under:

- RJ-ON-90/1: Plant tripped on 16.12.16, stopping production from Mangala & Aishwarya. Increase in water cut in Mangala wells, poor reservoir performance of Bhagyam
- Natural Decline in Ravva & CB-OS/2
- Closure of 1 well in MA field in KG-DWN-98/3

Natural Gas

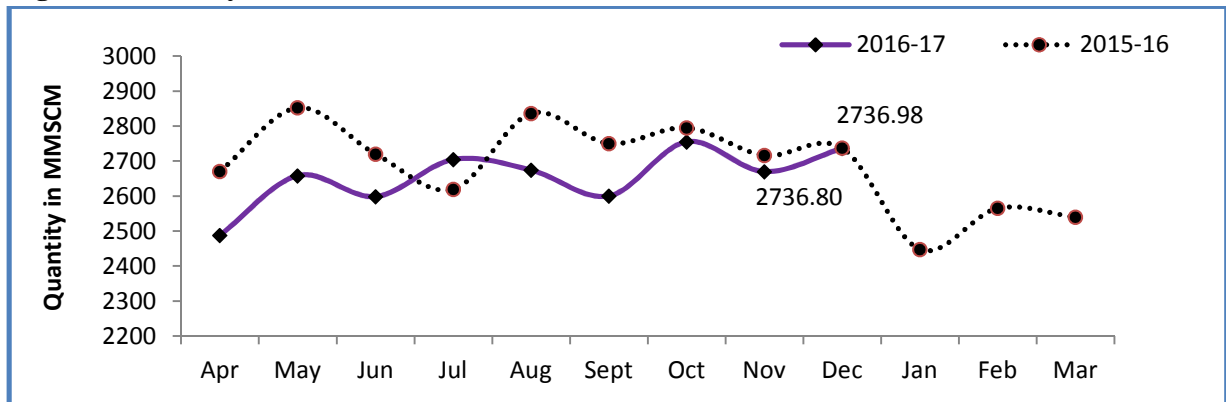
- 2 Natural gas production during December 2016 was 2736.80 MMSCM which is 9.68% lower than the target for the month and 0.01% lower than the production in December 2015. Cumulative natural gas production during April-December, 2016 was 23885.34 MMSCM which is 5.04% lower than target for the period and 3.29% lower than the production during corresponding period of last year. Unit-wise and state-wise natural gas production is given at Annexure-II. Unit-wise natural gas production for the month of December, 2016 and cumulatively for the period April-December, 2016 vis-à-vis same period of last year has been shown in Table-2 and month-wise in Figure-2.

Table-2: Natural Gas Production (MMSCM)

Oil Company	Target	December (Month)				April-December (Cumulative)			
	2016-17 (Apr-Mar)	2016-17		2015-16	% over last year	2016-17		2015-16	% over last year
		Target	Prod.*	Prod.		Target	Prod.*	Prod.	
ONGC	22743.43	2040.57	1926.75	1818.99	105.92	16724.08	16420.24	16272.14	100.91
OIL	2950.03	246.84	246.50	266.10	92.63	2260.52	2211.56	2120.06	104.32
PSC Fields	8425.44	742.87	563.56	651.89	86.45	6167.70	5253.54	6304.94	83.32
Total	34118.90	3030.28	2736.80	2736.98	99.99	25152.31	23885.34	24697.14	96.71

*: Provisional

Figure-2: Monthly Natural Gas Production



- 2.1 Natural gas production by ONGC during December, 2016 was 1926.75 MMSCM which is 5.58% lower than the monthly target but 5.92% higher when compared with December 2015. Cumulative natural gas production by ONGC during April-December, 2016 was 16420.24 MMSCM which is 1.82% lower than the cumulative target but 0.91% higher than the production during the corresponding period of last year. Shortfall in production was mainly due to decline in reservoir pressure in Bassein field and less production from Daman & C-26 Cluster due to evacuation constraint as export lines to TCPP platform is not yet completed.
- 2.2 Natural gas production by OIL during December, 2016 was 246.50 MMSCM which is 0.14% lower than the monthly target and 7.37% lower than December 2015. Cumulative natural gas production by OIL during April-December, 2016 was 2211.56 MMSCM which is 2.17% lower than the cumulative target but 4.32% higher than the production during the corresponding period of last year. Shortfall in production was mainly due to decline production potential in a few high producing gas wells due to unexpected subsurface problems like water and sand ingress.
- 2.3 Natural gas production by Pvt/JVs during December 2016 was 563.56 MMSCM which is 24.14% lower than the monthly target and 13.55% less when compared with December, 2015. Cumulative natural gas production by Pvt/JVs during April-December, 2016 was 5253.54 MMSCM which is 14.82% lower than the cumulative target and 16.68% lower

than the production during the corresponding period of last year. Reasons for shortfall in production are as under:

- Underperformance of wells in KG- OSN-2001/3.
- Underperformance of Sohagpur West CBM block extended dewatering hampering production in Raniganj East CBM block.
- Closure of 2 wells in D1D3 field in KG-DWN-98/3.
- RJ-ON-90/1: Plant tripped on 16.12.16, stopping production from Mangala & Aishwarya. Increase in water cut in Mangala wells, poor reservoir performance of Bhagyam.
- RJ-ON/6: Increase in Water cut in few wells.

Refinery Production (in terms of Crude oil processed)

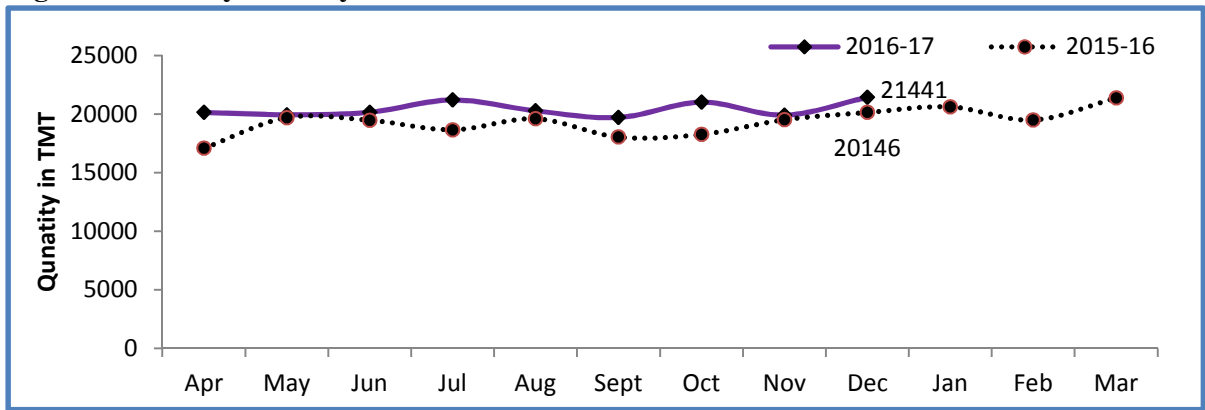
- 3 Refinery production during December, 2016 was 21441.47 TMT which is 3.21% higher than the target for the month and 6.43% higher than the production during corresponding period of last year. Cumulative production during April-December, 2016 was 183886.03 TMT which is 2.16% higher than the target for the period and 7.82% higher than the production during corresponding period of last year. Unit-wise production is given at Annexure-III. Company-wise production for the month of December, 2016 and cumulatively for the period April-December, 2016 vis-à-vis same period of last year has been shown in Table-3 and month-wise in Figure-3.

Table 3: Refinery Production (TMT)

Oil Company	Target	December (Month)				April-December (Cumulative)			
	2016-17 (Apr-Mar)	2016-17		2015-16	% over last year	2016-17		2015-16	% over last year
		Target	Prod.*	Prod.		Target	Prod.*	Prod.	
PSUs	135565.03	11662.78	12098.44	10848.04	111.53	101443.29	102756.76	91957.50	111.74
IOCL	65100.00	5570.12	5682.22	4917.90	115.54	48452.12	48103.96	41673.52	115.43
BPCL	25250.15	1918.14	2307.73	2085.02	110.68	18608.79	19338.98	17931.32	107.85
HPCL	16800.29	1493.00	1620.20	1564.69	103.55	12735.45	13195.83	12534.06	105.28
CPCL	10250.00	934.81	747.45	520.89	143.49	8291.60	8166.69	6811.46	119.90
NRL	2670.00	267.67	257.01	229.21	112.13	2027.50	1960.56	1847.18	106.14
MRPL	15450.00	1475.00	1476.64	1523.24	96.94	11295.00	11927.50	11114.26	107.32
ONGC	44.59	4.05	7.19	7.08	101.55	32.83	63.23	45.70	138.36
JVs	15000.00	1321.02	1570.99	1436.55	109.36	11486.44	12696.91	12919.50	98.28
BORL	6000.00	525.00	623.73	501.65	124.34	4425.00	4677.93	4660.25	100.38
HMEL	9000.00	796.02	947.25	934.91	101.32	7061.44	8018.99	8259.25	97.09
Private	89852.65	7790.78	7772.04	7861.27	98.87	67064.48	68432.36	65666.43	104.21
RIL	69561.01	6080.79	5994.99	6080.79	98.59	51788.53	52641.83	51788.53	101.65
EOL	20291.64	1709.99	1777.05	1780.48	99.81	15275.94	15790.54	13877.90	113.78
TOTAL	240417.68	20774.58	21441.47	20145.86	106.43	179994.20	183886.03	170543.44	107.82

*: Provisional

Figure 3: Monthly Refinery Production



3.1 PSU Refineries' production during December, 2016 was 12098.44 TMT which is 3.74% higher than the target for the month and 11.53% higher than the production achieved in the corresponding month of last year. Cumulative production by PSU refineries during April-December, 2016 was 102756.76 TMT which is 1.29% higher than the target for the period and 11.74% higher than the production during corresponding period of last year. Reasons for shortfall of refinery production in some PSU refineries are as under:

- ❖ IOCL, Paradip: Throughput lower due to coke upliftment issue.
- ❖ IOCL, Haldia: Throughput is lower due to VGO stock build-up
- ❖ IOCL, Guwahati/Digboi: Lower availability of Assam crude.
- ❖ CPCL, Manali: Throughput of Manali Refinery lower than target due to 'Vardha' cyclone which hit the refinery on 12th Dec'16 and lead to water crises as all water sources were temporally shutdown.
- ❖ CPCL, CBR: Lower throughput in CBR due to product evacuation constraints.
- ❖ NRL, Numaligarh: Unplanned shutdown of DCU.

3.2 Production in JV refineries during December, 2016 was 1570.99 TMT which is 18.92% higher than the target for the month and 9.36% higher than the production achieved in the corresponding month of last year. Cumulative production by JVs refineries during April-December, 2016 was 12696.91 TMT which is 10.54% higher than the target for the period but 1.72% lower than the production during corresponding period of last year.

3.3 Production in private refineries during December, 2016 was 7772.04 TMT which is 0.24% lower than the target for the month and 1.13% lower than the production achieved in the corresponding month of last year. Cumulative production by private refineries during April-December, 2016 was 68432.36 TMT which is 2.04% higher than the target for the period and 4.21% higher than the production during corresponding period of last year.

3.4 Refinery-wise details of the capacity utilization and production of petroleum products during the month of December, 2016 and cumulatively for the period April-December, 2016 vis-à-vis April-December, 2015 are given at Annexures-IV and V respectively.

Annexure-I

(Para 1)

MINISTRY OF PETROLEUM & NATURAL GAS

Crude Oil Production during the month of December, 2016 and cumulatively for the period April-December, 2016 vis-à-vis April-December, 2015

(in TMT)

Name of Undertaking/Unit/State	Planned production during the month	Production during the			Cumulative Production			% variation over last year		% variation during the month under review over planned production
		Month under review *	Corresponding month of last year **	Preceding month of current year **	(April-December)			During the month under review	Upto the end of the period	
					Planned production during current year	Actual production during current year *	Actual production during corresponding period of last year **			
(1)	(2)	(3)	(4)	(5)	(5)	(6)	(7)	(8)	(9)	(10)
1. ONGC	1931.109	1904.597	1895.698	1823.279	16872.797	16629.090	16879.297	0.47	-1.48	-1.37
Onshore	508.529	509.030	490.879	489.421	4452.710	4443.085	4349.788	3.70	2.14	0.10
Andhra Pradesh	24.955	24.118	24.820	23.475	210.098	203.160	224.791	-2.83	-9.62	-3.35
Assam ^	86.074	82.003	81.615	81.657	740.178	715.835	725.964	0.48	-1.40	-4.73
Gujarat	378.027	382.664	364.991	365.569	3332.017	3351.011	3212.098	4.84	4.32	1.23
Tamil Nadu	19.473	20.245	19.453	18.720	170.417	173.079	186.935	4.07	-7.41	3.96
Offshore	1422.580	1395.567	1404.819	1333.858	12420.087	12186.005	12529.509	-0.66	-2.74	-1.90
Eastern Offshore	3.278	1.298	3.371	1.279	16.931	11.589	19.460	-61.50	-40.45	-60.40
Western Offshore	1299.689	1277.463	1288.316	1218.421	11356.505	11156.645	11511.328	-0.84	-3.08	-1.71
Condensates	119.613	116.806	113.132	114.158	1046.651	1017.771	998.721	3.25	1.91	-2.35
2. OIL (Onshore)	312.408	280.590	270.124	269.464	2513.210	2430.457	2450.612	3.87	-0.82	-10.18
Assam	311.884	279.949	269.520	268.850	2508.012	2424.660	2446.674	3.87	-0.90	-10.24
Arunachal Pradesh	0.524	0.641	0.604	0.614	5.198	5.797	3.938	6.13	47.21	22.33
3. DGH (Private / JVs)	911.033	869.886	913.852	783.006	8189.454	7985.788	8617.953	-4.81	-7.34	-4.52
Onshore	745.337	692.875	723.224	615.710	6574.936	6361.341	6659.510	-4.20	-4.48	-7.04
Arunachal Pradesh	4.555	4.005	4.393	4.085	39.091	36.189	37.847	-8.83	-4.38	-12.07
Gujarat	16.893	10.952	13.554	12.024	134.574	103.969	113.222	-19.20	-8.17	-35.17
Rajasthan	716.706	672.829	703.968	594.595	6357.910	6191.733	6505.219	-4.42	-4.82	-6.12
Tamil Nadu	7.182	5.089	1.309	5.006	43.361	29.450	3.222	-	-	-
Offshore	165.697	177.011	190.628	167.296	1614.518	1624.447	1958.443	-7.14	-17.05	6.83
Eastern Offshore	78.308	79.189	90.397	77.951	726.166	727.477	985.992	-12.40	-26.22	1.13
Gujarat Offshore	24.649	31.025	35.022	28.466	267.422	289.506	308.573	-11.41	-6.18	25.87
Western Offshore	62.740	66.797	65.209	60.879	620.930	607.464	663.878	2.44	-8.50	6.47
GRAND TOTAL (1+2+3)	3154.550	3055.073	3079.674	2875.749	27575.461	27045.335	27947.862	-0.80	-3.23	-3.15
Onshore	1566.274	1482.495	1484.227	1374.595	13540.856	13234.883	13459.910	-0.12	-1.67	-5.35
Offshore	1588.277	1572.578	1595.447	1501.154	14034.605	13810.452	14487.952	-1.43	-4.68	-0.99

Note: Totals may not tally due to rounding off.

^: Includes crude oil production of Tripura

*: Provisional. **: Revised

Reasons for shortfall are indicated in the note.

MINISTRY OF PETROLEUM & NATURAL GAS

Natural Gas Production during the month of December, 2016 and cumulatively for the period April-December, 2016 vis-à-vis April-December, 2015

(in MMSCM)

Name of Undertaking/Unit/State	Planned production during the month	Production during the			Cumulative Production (April-December)			% variation over last year		% variation during the month under review over planned production
		Month under review *	Corresponding month of last year **	Preceding month of current year **	Planned production during current year	Actual production during current year *	Actual production during corresponding period of last year **	During the month under review	Upto the end of the period	
(1)	(2)	(3)	(4)	(5)	(5)	(6)	(7)	(8)	(9)	(10)
1. ONGC	2040.570	1926.746	1818.990	1866.932	16724.084	16420.242	16272.142	5.92	0.91	-5.58
Onshore	453.204	448.181	384.433	445.325	3919.570	3819.317	3550.880	16.58	7.56	-1.11
Andhra Pradesh	81.791	78.312	55.018	74.507	571.450	636.219	444.714	42.34	43.06	-4.25
Assam	36.563	35.048	33.949	34.119	318.154	322.888	302.839	3.24	6.62	-4.14
Gujarat	120.109	131.986	114.310	129.974	1095.933	1083.076	1042.723	15.46	3.87	9.89
Rajasthan	0.425	0.254	0.701	0.579	3.767	2.930	4.549	-63.77	-35.59	-40.19
Tamil Nadu	92.186	88.167	70.948	84.885	837.324	721.909	773.496	24.27	-6.67	-4.36
Tripura	122.131	114.414	109.507	121.261	1092.942	1052.295	982.559	4.48	7.10	-6.32
Offshore	1587.366	1478.565	1434.557	1421.607	12804.513	12600.925	12721.262	3.07	-0.95	-6.85
Eastern Offshore	60.406	57.279	25.619	53.299	414.824	306.481	160.689	123.58	90.73	-5.18
Western Offshore	1526.960	1421.286	1408.938	1368.308	12389.690	12294.444	12560.573	0.88	-2.12	-6.92
2. OIL	246.836	246.496	266.102	244.911	2260.519	2211.555	2120.061	-7.37	4.32	-0.14
Assam	230.869	223.350	243.084	226.019	2092.929	2024.329	1955.841	-8.12	3.50	-3.26
Arunachal Pradesh	1.087	1.004	1.029	0.978	10.590	8.942	8.508	-2.43	5.10	-7.64
Rajasthan	14.880	22.142	21.989	17.914	157.000	178.284	155.712	0.70	14.50	48.80
3. DGH (Private / JVs)	742.875	563.557	651.888	558.043	6167.703	5253.540	6304.939	-13.55	-16.68	-24.14
Onshore	114.461	88.614	114.035	82.801	920.067	881.706	928.510	-22.29	-5.04	-22.58
Assam	7.024	0.000	0.000	0.000	7.024	0.000	0.000	0.00	0.00	0.00
Arunachal Pradesh	0.770	1.512	1.419	1.464	6.609	11.400	14.110	6.55	-19.21	96.36
Gujarat	5.049	7.187	7.634	7.009	58.956	68.234	69.211	-5.86	-1.41	42.36
Rajasthan	100.813	79.201	104.862	73.656	842.590	798.591	844.916	-24.47	-5.48	-21.44
Tamil Nadu	0.806	0.714	0.120	0.672	4.888	3.481	0.273	-	-	-
CBM	139.086	53.135	33.338	50.286	799.586	420.645	290.632	59.38	44.73	-61.80
Jharkhand (CBM)	0.275	0.263	0.147	0.202	2.441	2.181	1.421	78.91	53.48	-4.45
Madhya Pradesh (CBM)	64.840	0.755	0.079	0.472	255.340	3.977	0.839	855.70	374.02	-98.84
West Bengal (CBM)	73.971	52.117	33.112	49.612	541.805	414.487	288.372	57.40	43.73	-29.54
Offshore	489.327	421.808	504.515	424.956	4448.050	3951.189	5085.797	-16.39	-22.31	-13.80
Eastern Offshore	341.292	260.314	349.136	258.503	3098.954	2459.410	3399.652	-25.44	-27.66	-23.73
Gujarat Offshore	3.325	7.106	5.799	6.771	29.497	62.112	50.218	22.54	23.68	113.71
Western Offshore	144.710	154.388	149.580	159.682	1319.600	1429.667	1635.927	3.21	-12.61	6.69
TOTAL (1+2+3)	3030.281	2736.799	2736.980	2669.886	25152.306	23885.337	24697.142	-0.01	-3.29	-9.68
CBM	139.086	53.135	33.338	50.286	799.586	420.645	290.632	59.38	44.73	-61.80
Onshore	814.501	783.291	764.570	773.037	7100.156	6912.578	6599.451	2.45	4.74	-3.83
Offshore	2076.693	1900.373	1939.072	1846.563	17252.564	16552.114	17807.059	-2.00	-7.05	-8.49

Note: Totals may not tally due to rounding off. *: Provisional. **: Revised

CBM: Coal Bed Methane

Reasons for shortfall are indicated in the note.

MINISTRY OF PETROLEUM & NATURAL GAS

Refinery Production (in terms of crude oil processed) during the month of December, 2016 and cumulatively for the period April-December, 2016 vis-à-vis April-December, 2015

(in TMT)

Name of Undertaking/Unit	Planned production during the month	Production during the			Cumulative Production			% variation over last year		% variation during the month under review over planned production
		Month under review *	Corresponding month of last year	Preceding month of current year **	(April-December)			During the month under review	Upto the end of the period	
					Planned production during current year	Actual production during current year *	Actual production during corresponding period of last year **			
(1)	(2)	(3)	(4)	(5)	(5)	(6)	(7)	(8)	(9)	(10)
A. Public Sector	11662.782	12098.440	10848.038	11446.986	101443.288	102756.760	91957.500	11.53	11.74	3.74
1. IOC, Guwahati	84.000	71.244	74.637	72.169	744.400	651.803	740.816	-4.55	-12.02	-15.19
2. IOC, Barauni	533.202	579.355	602.386	523.376	4653.196	4927.044	4909.967	-3.82	0.35	8.66
3. IOC, Gujarat	947.127	1129.923	1205.530	1185.010	10192.765	10724.336	10184.895	-6.27	5.30	19.30
4. IOC, Haldia	675.050	534.156	726.618	544.002	5859.715	5799.017	5756.642	-26.49	0.74	-20.87
5. IOC, Mathura	682.000	761.365	759.980	714.072	6572.002	6892.469	6535.297	0.18	5.47	11.64
6. IOC, Digboi	59.000	45.141	42.035	46.561	477.000	393.518	415.797	7.39	-5.36	-23.49
7. IOC, Panipat	1324.010	1328.770	1298.524	1294.066	11357.943	11665.673	11282.521	2.33	3.40	0.36
8. IOC, Bongaigaon	177.733	219.568	208.194	212.765	1769.696	1880.208	1847.584	5.46	1.77	23.54
9. IOC, Paradip	1088.000	1012.699	0.000	553.805	6825.400	5169.896	0.000	-	-	-6.92
Total IOC	5570.122	5682.221	4917.904	5145.826	48452.117	48103.964	41673.519	15.54	15.43	2.01
10. BPCL, Mumbai	1193.318	1262.540	1149.799	1221.357	10567.271	10796.647	9940.623	9.81	8.61	5.80
11. BPCL, Kochi	724.818	1045.187	935.222	1012.186	8041.516	8542.330	7990.699	11.76	6.90	44.20
Total BPCL	1918.136	2307.727	2085.022	2233.543	18608.787	19338.977	17931.322	10.68	7.85	20.31
12. HPCL, Mumbai	685.410	758.223	718.515	715.370	6080.250	6312.787	5792.833	5.53	8.98	10.62
13. HPCL, Visakh	807.589	861.976	846.174	819.294	6655.203	6883.041	6741.228	1.87	2.10	6.73
Total HPCL	1492.999	1620.199	1564.689	1534.664	12735.453	13195.828	12534.060	3.55	5.28	8.52
14. CPCL, Manali	884.000	706.655	501.370	825.144	7840.000	7765.724	6435.851	40.94	20.66	-20.06
15. CPCL, CBR	50.806	40.797	19.522	38.300	451.598	400.970	375.609	108.98	6.75	-19.70
Total CPCL	934.806	747.452	520.892	863.444	8291.598	8166.694	6811.460	43.49	19.90	-20.04
16. NRL, Numaligarh	267.666	257.006	229.210	262.881	2027.502	1960.563	1847.176	12.13	6.14	-3.98
17. MRPL, Mangalore	1475.000	1476.641	1523.236	1399.540	11295.000	11927.503	11114.262	-3.06	7.32	0.11
18. ONGC, Tatipaka	4.053	7.194	7.085	7.088	32.831	63.232	45.701	1.55	38.36	77.49
B. Joint Venture Sector	1321.017	1570.986	1436.554	925.239	11486.441	12696.913	12919.504	9.36	-1.72	18.92
19. BORL, Bina	525.000	623.733	501.648	170.781	4425.000	4677.927	4660.252	24.34	0.38	18.81
20. HMEL, GGSR, Bhatinda	796.017	947.253	934.906	754.458	7061.441	8018.986	8259.252	1.32	-2.91	19.00
C. Private Sector	7790.782	7772.042	7861.267	7543.692	67064.476	68432.361	65666.434	-1.13	4.21	-0.24
21. RIL, Jamnagar	2831.453	2782.188	2831.453	2654.815	24194.100	24758.921	24194.100	-1.74	2.33	-1.74
22. RIL, SEZ	3249.339	3212.801	3249.339	3162.153	27594.435	27882.905	27594.435	-1.12	1.05	-1.12
Total RIL	6080.792	5994.989	6080.792	5816.968	51788.535	52641.826	51788.535	-1.41	1.65	-1.41
23. EOL, Vadinar	1709.990	1777.053	1780.475	1726.724	15275.941	15790.535	13877.899	-0.19	13.78	3.92
TOTAL(A+B+C)	20774.581	21441.468	20145.859	19915.917	179994.205	183886.034	170543.438	6.43	7.82	3.21

Note: Totals may not tally due to rounding off. *: Provisional. **: Revised

Reasons for shortfall are indicated in the note.

MINISTRY OF PETROLEUM & NATURAL GAS

(Para 3.4)

Refinery-wise Capacity Utilisation during the month of December, 2016 and cumulatively for the period April-December 2016 vis-à-vis April-December 2015

(in TMT)

Name of Undertaking/Unit	December,2016			December,2015			Cumulative (April - December)					
	Prorated Installed Capacity	Actual Crude T'put *	% Utilisation of Installed Capacity	Prorated Installed Capacity	Actual Crude T'put	% Utilisation of Installed Capacity	2016-17			2015-16		
							Prorated Installed Capacity	Actual Crude T'put *	% Utilisation of Installed Capacity	Prorated Installed Capacity	Actual Crude T'put **	% Utilisation of Installed Capacity
(1)	(2)	(3)	(4)	(5)	(6)	(7)	(8)	(9)	(10)	(11)	(12)	(13)
A. Public Sector	11471.00	12098.44	105.47	10170.00	10848.04	106.67	101762.00	102756.76	100.98	90214.00	91957.50	101.93
1. IOC, Guwahati	85.00	71.24	83.82	85.00	74.64	87.81	753.00	651.80	86.56	751.00	740.82	98.64
2. IOC, Barauni	510.00	579.36	113.60	508.00	602.39	118.58	4521.00	4927.04	108.98	4508.00	4909.97	108.92
3. IOC, Gujarat	1164.00	1129.92	97.07	1160.00	1205.53	103.93	10322.00	10724.34	103.90	10294.00	10184.90	98.94
4. IOC, Haldia	637.00	534.16	83.85	635.00	726.62	114.43	5651.00	5799.02	102.62	5635.00	5756.64	102.16
5. IOC, Mathura	679.00	761.37	112.13	678.00	759.98	112.09	6027.00	6892.47	114.36	6011.00	6535.30	108.72
6. IOC, Digboi	55.00	45.14	82.07	55.00	42.04	76.43	490.00	393.52	80.31	488.00	415.80	85.20
7. IOC, Panipat	1274.00	1328.77	104.30	1270.00	1298.52	102.25	11301.00	11665.67	103.23	11270.00	11282.52	100.11
8. IOC, Bongaigaon	200.00	219.57	109.78	199.00	208.19	104.62	1771.00	1880.21	106.17	1766.00	1847.58	104.62
9. IOC, Paradip	1274.00	1012.70	79.49	0.00	0.00	0.00	11301.00	5169.90	45.75	0.00	0.00	0.00
Total IOC	5877.00	5682.22	96.69	4591.00	4917.90	107.12	52137.00	48103.96	92.26	40724.00	41673.52	102.33
10. BPCL, Mumbai	1019.00	1262.54	123.90	1016.00	1149.80	113.17	9041.00	10796.65	119.42	9016.00	9940.62	110.26
11. BPCL, Kochi	807.00	1045.19	129.52	805.00	935.22	116.18	7158.00	8542.33	119.34	7138.00	7990.70	111.95
Total BPCL	1826.00	2307.73	126.38	1821.00	2085.02	114.50	16199.00	19338.98	119.38	16154.00	17931.32	111.00
12. HPCL, Mumbai	552.00	758.22	137.36	551.00	718.52	130.40	4897.00	6312.79	128.91	4884.00	5792.83	118.61
13. HPCL, Visakh	705.00	861.98	122.27	703.00	846.17	120.37	6253.00	6883.04	110.08	6236.00	6741.23	108.10
Total HPCL	1257.00	1620.20	128.89	1254.00	1564.69	124.78	11151.00	13195.83	118.34	11120.00	12534.06	112.72
14. CPCL, Manali	892.00	706.66	79.22	889.00	501.37	56.40	7911.00	7765.72	98.16	7889.00	6435.85	81.58
15. CPCL, CBR	85.00	40.80	48.00	85.00	19.52	22.97	753.00	400.97	53.25	751.00	375.61	50.01
Total CPCL	977.00	747.45	76.50	974.00	520.89	53.48	8664.00	8166.69	94.26	8641.00	6811.46	78.83
16. NRL, Numaligarh	255.00	257.01	100.79	254.00	229.21	90.24	2260.00	1960.56	86.75	2254.00	1847.18	81.95
17. MRPL, Mangalore	1274.00	1476.64	115.91	1270.00	1523.24	119.94	11301.00	11927.50	105.54	11270.00	11114.26	98.62
18. ONGC, Tatipaka	6.00	7.19	119.90	6.00	7.08	118.08	50.00	63.23	126.46	50.00	45.70	91.40
B. Joint Venture Sector	1274.00	1570.99	123.31	1270.00	1436.55	113.11	11301.00	12696.91	112.35	11270.00	12919.50	114.64
19. BORL, Bina	510.00	623.73	122.30	508.00	501.65	98.75	4521.00	4677.93	103.47	4508.00	4660.25	103.38
20. HMEL, GGSR, Bhatinda	764.00	947.25	123.99	762.00	934.91	122.69	6781.00	8018.99	118.26	6762.00	8259.25	122.14
C. Private Sector	6795.00	7772.04	114.38	6776.00	7861.27	116.02	60274.00	68432.36	113.54	60109.00	65666.43	109.25
21. RIL, Jamnagar	2803.00	2782.19	99.26	2795.00	2831.45	101.30	24863.00	24758.92	99.58	24795.00	24194.10	97.58
22. RIL, SEZ	2293.00	3212.80	140.11	2287.00	3249.34	142.08	20342.00	27882.90	137.07	20287.00	27594.44	136.02
Total RIL	5096.00	5994.99	117.64	5082.00	6080.79	119.65	45205.00	52641.83	116.45	45082.00	51788.53	114.88
23. EOL, Vadinar	1699.00	1777.05	104.59	1694.00	1780.48	105.10	15068.00	15790.54	104.80	15027.00	13877.90	92.35
TOTAL(A+B+C)	19540.00	21441.47	109.73	18216.00	20145.86	110.59	173337.00	183886.03	106.09	161593.00	170543.44	105.54

*: Provisional. **:Revised

MINISTRY OF PETROLEUM & NATURAL GAS

Production of Petroleum Products during the month of December 2016 and cumulatively for the period April-December 2016 vis-à-vis April-December 2015

(in TMT)

Name of Undertaking/Unit	Planned production during the month	Production during the			Cumulative Production			% variation over last year		% variation during the month under review over planned production
		Month under review *	Corresponding month of last year	Preceding month of current year **	(April-December)			During the month under review	Upto the end of the period	
					Planned production during current year	Actual production during current year*	Actual production during corresponding period of last year**			
(1)	(2)	(3)	(4)	(5)	(5)	(6)	(7)	(8)	(9)	(10)
I. Refinery										
A. Public Sector	10895.924	11390.217	10242.325	10960.794	94798.768	96452.112	86971.241	11.21	10.90	4.54
1. IOC, Guwahati	88.623	77.483	93.511	93.821	773.903	834.267	907.230	-17.14	-8.04	-12.57
2. IOC, Barauni	505.415	539.267	566.988	476.301	4279.596	4487.513	4546.788	-4.89	-1.30	6.70
3. IOC, Gujarat	877.822	1097.448	1177.881	1170.824	9667.719	10078.744	9761.774	-6.83	3.25	25.02
4. IOC, Haldia	617.409	451.367	651.873	495.328	5339.488	5231.791	5246.487	-30.76	-0.28	-26.89
5. IOC, Mathura	606.287	779.750	766.866	623.905	6334.937	6640.102	6364.145	1.68	4.34	28.61
6. IOC, Digboi	59.720	45.232	38.633	47.432	479.707	401.071	403.569	17.08	-0.62	-24.26
7. IOC, Panipat	1332.064	1371.522	1265.438	1367.689	11310.096	11754.690	11320.082	8.38	3.84	2.96
8. IOC, Bongaigaon	183.129	214.113	210.152	207.647	1624.549	1707.404	1653.939	1.88	3.23	16.92
9. IOC, Paradip	982.700	780.916	0.000	516.278	5882.200	4259.651	0.000	-	-	-20.53
Total IOC	5253.168	5357.098	4771.342	4999.225	45692.195	45395.233	40204.014	12.28	12.91	1.98
10. BPCL, Mumbai	1144.995	1223.198	1062.159	1188.539	10139.261	10407.068	9470.806	15.16	9.89	6.83
11. BPCL, Kochi	654.122	971.375	885.899	969.469	7380.062	8073.120	7569.893	9.65	6.65	48.50
Total BPCL	1799.117	2194.573	1948.058	2158.008	17519.323	18480.188	17040.699	12.65	8.45	21.98
12. HPCL, Mumbai	632.765	714.379	664.453	683.981	5613.244	5884.414	5392.790	7.51	9.12	12.90
13. HPCL, Visakh	743.563	823.276	763.864	763.863	6125.113	6293.668	6166.406	7.78	2.06	10.72
Total HPCL	1376.328	1537.655	1428.317	1447.844	11738.358	12178.082	11559.196	7.66	5.35	11.72
14. CPCL, Manali	794.850	663.094	455.103	747.823	7107.695	7163.609	5858.976	45.70	22.27	-16.58
15. CPCL, CBR	51.170	41.067	20.219	38.504	454.788	402.437	382.018	103.11	5.35	-19.74
Total CPCL	846.020	704.161	475.322	786.327	7562.483	7566.046	6240.994	48.14	21.23	-16.77
16. NRL, Numaligarh	264.391	262.204	235.878	265.878	2009.509	1948.984	1829.348	11.16	6.54	-0.83
17. MRPL, Mangalore	1352.900	1327.878	1376.405	1296.639	10244.500	10823.109	10052.118	-3.53	7.67	-1.85
18. ONGC, Tatipaka	4.000	6.648	7.003	6.873	32.400	60.470	44.873	-5.07	34.76	66.20
B. Joint Venture Sector	1233.684	1445.847	1302.229	901.572	10737.216	11818.054	12019.930	11.03	-1.68	17.20
19. BOREL, Bina	484.100	577.267	451.083	130.737	4080.900	4228.492	4223.547	27.97	0.12	19.25
20. HMEL, GGSR, Bhatinda	749.584	868.580	851.146	770.835	6656.316	7589.562	7796.382	2.05	-2.65	15.87
C. Private Sector	8036.986	7892.466	8139.376	7501.864	69754.477	70315.792	68346.176	-3.03	2.88	-1.80
21. RIL, Jamnagar	2831.424	2753.182	2831.424	2468.859	24414.984	24556.485	24414.984	-2.76	0.58	-2.76
22. RIL, SEZ	3553.169	3442.839	3553.169	3355.633	30582.101	30588.143	30582.101	-3.11	0.02	-3.11
Total RIL	6384.593	6196.021	6384.593	5824.492	54997.085	55144.628	54997.085	-2.95	0.27	-2.95
23. EOL, Vadinar	1652.393	1696.445	1754.783	1677.372	14757.391	15171.164	13349.091	-3.32	13.65	2.67
TOTAL(A+B+C)	20166.594	20728.530	19683.930	19364.230	175290.460	178585.958	167337.347	5.31	6.72	2.79
II. Fractionators										
ONGC	275.837	301.215	269.930	255.141	2182.054	2321.627	2153.553	11.59	7.80	9.20
OIL	3.850	3.172	3.738	3.206	30.750	25.896	30.354	-15.14	-14.69	-17.61
GAIL	76.602	98.417	96.950	96.242	758.833	831.488	829.201	1.51	0.28	28.48
D. Total Fractionators	356.289	402.804	370.618	354.589	2971.637	3179.011	3013.109	8.68	5.51	13.06
Grand Total (A+B+C+D)	20522.883	21131.334	20054.548	19718.819	178262.098	181764.969	170350.455	5.37	6.70	2.96

Note: Totals may not tally due to rounding off.

*: Provisional.

**:Revised