

Brief note on the Production Performance of Oil & Natural Gas Sector for the month of December, 2015 and cumulatively for the period April-December, 2015 vis-à-vis April-December, 2014

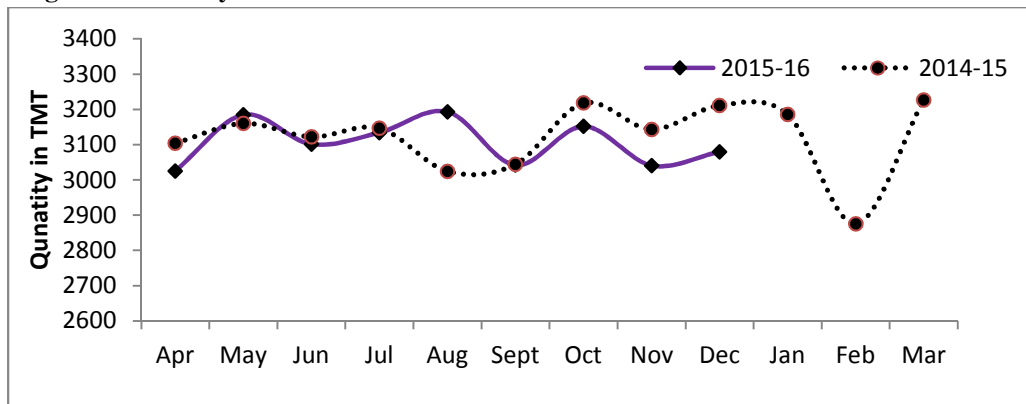
1. Crude Oil Production

1.1 Indigenous crude oil production (including condensate) during December, 2015 was 3079.611 TMT which is 1.38% lower than the target for the month and 4.09% lower than the production during corresponding period of last year. Cumulative crude oil production during April-December, 2015 was 27952.376 TMT which is 1.07% higher than target for the period and 0.79% lower than the production during corresponding period of last year. Unit-wise and state-wise crude oil production is given at Annexure-I. Unit-wise crude oil production (including condensate) for the month of December, 2015 and cumulatively for the period April-December, 2015 vis-à-vis same period of last year has been shown in Table-1.1 and month-wise in Figure-1.1

Table 1.1: Crude Oil Production (TMT)

Oil Company	Target	December (Month)				April-December (Cumulative)			
	2015-16 (Apr-Mar)	2015-16		2014-15	% over last year	2015-16		2014-15	% over last year
		Target	Prod.	Prod.		Target	Prod.	Prod.	
ONGC	22732	1905	1896	1895	100.06	16935	16884	16723	100.96
OIL	3595	308	270	288	93.70	2673	2451	2579	95.03
PSC Fields	10719	910	914	1028	88.88	8048	8618	8872	97.14
Total	37046	3123	3080	3211	95.91	27656	27952	28174	99.21

Figure-1: Monthly Crude Oil Production



1.2 ONGC's crude oil production during December, 2015 was 1895.637 TMT which is 0.47% lower than the target for the month and 0.06% higher than the production achieved in the

corresponding month of last year. ONGC's cumulative production during April-December, 2015 was 16883.815 TMT which is 0.30% lower than the cumulative target and 0.96% higher than the production during the corresponding period of last year. The shortfall in ONGC's production was due to following reason:

- Gujarat, Mehsana: Less Air injection in Santhal field, increasing water cut in down dip wells of N Kadi field, increase in water cut, increase in sick wells & power shut down.
- Gujarat, Ahmedabad: Poor influx, ceasure of wells, increase in water cut, power shutdown, lift optimization & delayed / less gain from Gamij Field.
- Gujarat, Cambay: Less than envisaged production from Nadiad and Vadatal, increase in water cut.
- Assam: Low Gas injection pressure & poor influx.
- Tamilnadu, Karaikal: Less than anticipated production from Madanam field & closure of wells due to less / nil off-take by consumers.

1.3 OIL's crude oil production during December, 2015 was 270.124 TMT which is 12.41% lower than the target for the month and 6.30% lower than the production achieved in the corresponding month of last year. OIL's cumulative production during April-December, 2015 was 2450.612 TMT which is 8.33% lower than the cumulative target and 4.97% lower than the production during the corresponding period of last year. Reasons for shortfall in production are given below:

- Rise in water cut in wells of Shalmari, Greater Chandmari and Greater Hapjan Fields.
- Permanent loss at Makum & Hapjan OCS.
- Less than planned contribution from workover & new wells

1.4 Pvt. /JVs' crude oil production during December, 2015 was 913.850 TMT which is 0.45% higher than the target for the month and 11.12% lower than production of corresponding month of last year. Pvt./JVs' cumulative production during April-December, 2015 was 8617.949 TMT which is 7.08% higher than the cumulative target and 2.86% lower than the production during the corresponding period of last year. Reasons for shortfall in production are given below:

- Cairn: Shutdown of Mangla processing terminal. Natural decline in Ravva, Mangala and underperformance of Bhagyam wells in RJ-ON-90/1
- RIL: Under performance of wells of KG D6.
- JV of ONGC, BG & RIL: Less production in Panna-Mukta due to shutdown.
- GEOENPRO: Sand ingress in Kharsang

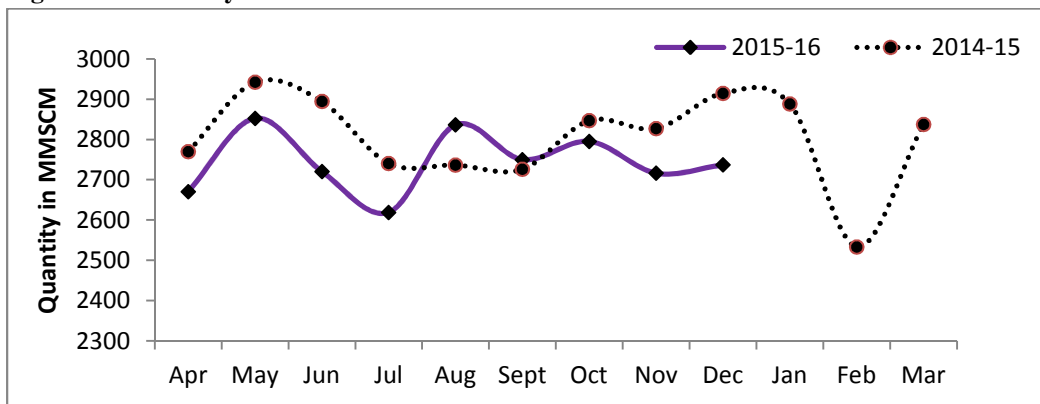
2. Natural Gas Production

2.1 Natural Gas Production during December, 2015 was 2736.990 MMSCM which is 9.30% lower than the target for the month and 6.09% lower than the production during corresponding period of last year. Cumulative natural gas production during April-December, 2015 was 24697.304 MMSCM which is 6.32% lower than the target for the period and 2.76 lower than the production during corresponding period of last year. Unit-wise and state-wise natural gas production is given at Annexure-II. Unit-wise natural gas production for the month of December, 2015 and cumulatively for the period April-December, 2015 vis-à-vis same period of last year has been shown in Table-2.1 and month-wise in Figure-2.1.

Table 2.1: Natural Gas Production (MMSCM)

Oil Company	Target	December (Month)				April-December (Cumulative)			
	2015-16 (Apr-Mar)	2015-16		2014-15	% over last year	2015-16		2014-15	% over last year
		Target	Prod.	Prod.		Target	Prod.	Prod.	
ONGC	23908	2059	1819	1898	95.84	17784	16272	16597	98.04
OIL	3010	259	266	232	114.66	2271	2120	2058	103.00
PSC Fields	8362	700	652	785	83.09	6308	6305	6742	93.52
Total	35280	3018	2737	2914	93.91	26363	24697	25397	97.24

Figure-2.1: Monthly Natural Gas Production



2.2 ONGC's natural gas production during December, 2015 was 1818.978 MMSCM which is 11.65% lower than the target for the month and 4.16% lower than the production achieved in the corresponding month of last year. ONGC's cumulative natural gas production during April-December, 2015 was 16272.130 MMSCM which is 8.50% lower than the cumulative target and 1.96% lower than the production during the corresponding period of last year. Reasons for the shortfall are given below:

- ❖ Eastern Offshore: Delay in commencement of production from one deep water well
- ❖ Bassein & Satellite: Less production from new well/side-track wells and decline in Bassein fields. Inspection / maintenance of compressors at BPA/BPB platforms
- ❖ Gujarat: Closure of wells due to unplanned shut down of GAIL Gas line from Ahmedabad/Kalol to Ramol. Decline in associated gas production in South Kadi & Gamij fields
- ❖ Andhra Pradesh: Closure of 42 wells as GAIL pipelines in Tatipaka-Lanco & Endamaru-Oduru sections are still under repair.
- ❖ Assam: Decline in associated gas production in Geleki & Lakwa fields.
- ❖ Tripura: Less off take due to stoppage of 2nd unit of OTPC

2.3 OIL's natural gas production during December, 2015 was 266.102 MMSCM which is 2.65% higher than the target for the month and 14.66% higher than the production achieved in the corresponding month of last year. OIL's cumulative natural gas production during April-December, 2015 was 2120.061 MMSCM which is 6.64% lower than the cumulative target and 3.00% higher than the production during the corresponding period of last year. Reasons for the shortfall are given below:

- Shortfall in production of natural gas is mainly due to low upliftment by the following consumers:-
 - a) LTPS due to transporters line capacity constraint.
 - b) BCPL, due to pre-commissioning job
 - c) Less offtake by Tea Gardens due to off season

2.4 Pvt. /JVs' natural gas production during December, 2015 was 651.910 MMSCM which is 6.81% lower than the target for the month and 16.91% lower than the production achieved in the corresponding month of last year. Pvt. /JV's cumulative natural gas production during April-December, 2015 was 6305.113 MMSCM which is 0.05% lower than the cumulative target and 6.48% lower than the production during the corresponding period of last year. Reasons for the shortfall are given below:

- RIL (KG-D6): Underperformance of MA wells.
- JV of BG, RIL & ONGC: Less Production in Panna Mukta of BGEPIIL due to shut down PPA riser repair. Panna-Mukta carried out its planned shutdown for riser repair in April- May-15 and Gas Evacuation constraint in July'15 due to repair of 42" SB – HAZIRA ONGC Line.
- Cairn: Non-associated gas producing well LB-7 watered out prematurely in CB-OS2. M &S Tapti field proposed for abandonment.
- Other operators: Hazira field proposed for abandonment. Natural decline in PY 1, Dholka.
- CBM: Extended dewatering in Raniganj South (GEECL), Delayed forest clearance in Raniganj East (Essar).

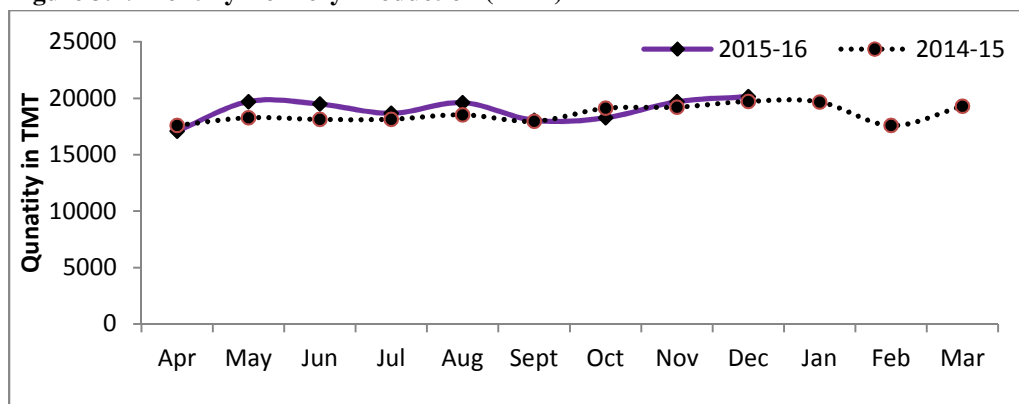
3. Refinery Production (in terms of Crude oil processed):

3.1 Refinery production during December, 2015 was 20146.410 TMT which is 3.94% higher than the target for the month and 2.13% higher than the production during corresponding period of last year. Cumulative production during April-December, 2015 was 170710.665 TMT which is 2.08% higher than the target for the period and 2.41% higher than the production during corresponding period of last year. Unit-wise production is given at Annexure-III. Unit-wise production for the month of December, 2015 and cumulatively for the period April-December, 2015 vis-à-vis same period of last year has been shown in Table-3.1 and month-wise in Figure-3.1.

Table 3.1: Refinery Production (TMT)

Oil Company	Target	December (Month)				April-December (Cumulative)			
	2015-16 (Apr-Mar)	2015-16		2014-15	% over last year	2015-16		2014-15	% over last year
		Target	Actual	Actual		Target	Actual	Actual	
IOCL	55000	4780	4918	4611	106.67	40908	41674	40081	103.97
BPCL	23197	1840	2085	1819	114.60	17367	17931	17136	104.64
HPCL	16200	1438	1565	1499	104.41	11979	12535	11726	106.89
CPCL	10800	948	521	958	54.38	8017	6811	8066	84.45
NRL	2700	242	229	227	101.18	1995	1847	2153	85.81
MRPL	15250	1500	1523	1431	106.46	11000	11114	10598	104.87
ONGC	61	3	7	5	138.04	45	46	39	117.39
BORL	5200	500	502	588	85.30	3700	4660	4644	100.34
HMEL	9000	762	935	864	108.18	6762	8259	5142	160.61
RIL	68042	5965	6081	5965	101.94	51732	51955	51732	100.43
EOL	18793	1404	1780	1759	101.22	13720	13878	15371	90.29
TOTAL	224242	19383	20146	19726	102.13	167226	170711	166688	102.41

Figure 3.1: Monthly Refinery Production (TMT)



3.2 PSU Refineries' production during December, 2015 was 10848.589 TMT which is 0.91% higher than the target for the month and 2.83% higher than the production achieved in the corresponding month of last year. Cumulative production of PSUs during April-December, 2015 was 91958.032 TMT which is 0.71% higher than the cumulative target and 2.40% higher than the production during the corresponding period of last year. Reasons for shortfalls in PSU refineries are given below:

- ❖ IOCL, Gujarat: Throughput is restricted due to lower North Gujarat crude availability.
- ❖ IOCL, Digboi: Throughput is restricted due to lower Assam crude availability.
- ❖ IOCL, Panipat: Throughput is lower due to planned HCU shutdown.
- ❖ CPCL, Manali: Crude throughput was lower than plan on account of (i) Refinery shutdown due to unprecedented rain and floods during first week of Dec'15. (ii) VGO containment due to single MUG compressor operation of Hydrocracker Unit.
- ❖ CPCL, Narimanam: Crude throughput lower than target as RCO/LSHS movement to Manali Refinery was affected due to floods and CDU was under shutdown from 6.12.15 to 14.12.15.
- ❖ NRL, Numaligarh: Lower receipt of Crude from OIL.

3.3 Production in JV refineries during December, 2015 was 1436.554 TMT which is 13.80% higher than the target for the month and 1.08% lower than the production achieved in the corresponding month of last year. Cumulative production in JV refineries during April-December, 2015 was 12919.504 TMT which is 23.49% higher than the cumulative target and 32.01% higher than the production during the corresponding period of last year.

3.4 Production in private refineries during December, 2015 was 7861.267 TMT which is 6.67% higher than the target for the month and 1.77% higher than the production achieved in the corresponding month of last year. Cumulative production in private refineries during April-December, 2015 was 65833.129 TMT which is 0.58% higher than the cumulative target and 1.89% lower than the production during the corresponding period of last year.

3.5 Refinery-wise details of the capacity utilization and Production of petroleum products during the month of December, 2015 and cumulatively for the period April-December, 2015 vis-à-vis April-December,2014 are given at Annexures-IV and V respectively.

Annexure-I

MINISTRY OF PETROLEUM & NATURAL GAS

(Para 1.1)

Review of Crude Oil Production during the month of December, 2015 and cumulatively for the period April-December, 2015 vis-à-vis April-December, 2014

(Qty: '000' Tonnes)

Name of Undertaking/Unit/State	Planned production during the month	Production during the			Cumulative Production			% variation over last year		% variation during the month under review over planned production
		Month under review *	Corresponding month of last year	Preceding month of current year	(April - December)			During the month under review	Upto the end of the period	
(1)	(2)				(3)	(4)	(5)			(6)
1. ONGC	1904.531	1895.637	1894.536	1837.993	16934.759	16883.815	16723.266	0.06	0.96	-0.47
Onshore	526.501	491.864	510.970	478.855	4554.270	4355.352	4614.348	-3.74	-5.61	-6.58
Andhra Pradesh	24.453	24.820	20.931	23.999	210.607	224.790	184.050	18.58	22.14	1.50
Assam ^	89.077	81.615	86.110	79.284	746.217	725.964	825.808	-5.22	-12.09	-8.38
Gujarat	389.322	365.190	384.095	355.829	3397.369	3213.575	3428.957	-4.92	-6.28	-6.20
Tamil Nadu	23.649	20.239	19.834	19.743	200.077	191.023	175.534	2.04	8.82	-14.42
Offshore	1378.030	1403.773	1383.566	1359.138	12380.489	12528.463	12108.917	1.46	3.46	1.87
Eastern Offshore	0.925	3.371	1.921	2.792	9.316	19.460	12.375	75.48	57.25	264.43
Western Offshore	1260.564	1287.270	1260.639	1242.952	11328.167	11510.282	10990.051	2.11	4.73	2.12
Condensates	116.541	113.132	121.006	113.394	1043.006	998.721	1106.491	-6.51	-9.74	-2.93
2. OIL (Onshore)	308.390	270.124	288.298	264.878	2673.375	2450.612	2578.757	-6.30	-4.97	-12.41
Assam	307.678	269.520	287.681	264.369	2668.461	2446.674	2573.208	-6.31	-4.92	-12.40
Arunachal Pradesh	0.712	0.604	0.617	0.509	4.914	3.938	5.549	-2.11	-29.03	-15.17
3. DGH (Private / JVC)	909.762	913.850	1028.189	937.918	8048.150	8617.952	8871.862	-11.12	-2.86	0.45
Onshore	700.595	723.220	781.273	735.653	6214.284	6659.507	6839.468	-7.43	-2.63	3.23
Arunachal Pradesh	5.929	4.390	5.321	4.144	52.596	37.845	55.071	-17.50	-31.28	-25.96
Gujarat	16.459	13.550	10.903	12.458	145.336	113.218	105.426	24.28	7.39	-17.68
Rajasthan	678.207	703.970	765.049	717.780	6016.352	6505.221	6678.971	-7.98	-2.60	3.80
Tamil Nadu	0.000	1.310	0.000	1.271	0.000	3.223	0.000	-	-	-
Offshore	209.167	190.630	246.916	202.265	1833.866	1958.445	2032.394	-22.80	-3.64	-8.86
Eastern Offshore	106.144	90.400	131.186	94.348	913.006	985.995	986.790	-31.09	-0.08	-14.83
Gujarat Offshore	29.270	35.020	35.838	34.430	259.649	308.571	299.821	-2.28	2.92	19.65
Western Offshore	73.753	65.210	79.892	73.487	661.211	663.879	745.783	-18.38	-10.98	-11.58
GRAND TOTAL (1+2+3)	3122.683	3079.611	3211.023	3040.789	27656.284	27952.379	28173.885	-4.09	-0.79	-1.38
Onshore	1535.486	1485.208	1580.541	1479.386	13441.929	13465.471	14032.573	-6.03	-4.04	-3.27
Offshore	1587.197	1594.403	1630.482	1561.403	14214.355	14486.908	14141.311	-2.21	2.44	0.45

Note: Totals may not tally due to rounding off figures.

^: Includes crude oil production of Tripura

*: Provisional. **: Revised

Reasons for shortfall are indicated in the note.

MINISTRY OF PETROLEUM & NATURAL GAS

Review of Natural Gas Production during the month of December, 2015 and cumulatively for the period April-December, 2015 vis-à-vis April-December, 2014

(Qty: Million Cubic Meters)

Name of Undertaking/Unit/State	Planned production during the month	Production during the			Cumulative Production (April - December)			% variation over last year		% variation during the month under review over planned production
		Month under review *	Corresponding month of last year	Preceding month of current year	Planned production during current year	Actual production during current year	Actual production during corresponding period of last year	During the month under review	Upto the end of the period	
(1)	(2)	(3)	(4)	(5)	(6)	(7)	(8)	(9)	(10)	(11)
1. ONGC	2058.728	1818.978	1897.876	1776.830	17783.507	16272.130	16597.184	-4.16	-1.96	-11.65
Onshore	469.650	384.421	405.269	390.597	3984.192	3550.868	3570.239	-5.14	-0.54	-18.15
Andhra Pradesh	77.027	55.018	48.754	52.470	582.715	444.714	391.995	12.85	13.45	-28.57
Assam	41.542	33.949	35.813	33.820	348.397	302.839	346.254	-5.21	-12.54	-18.28
Gujarat	102.764	114.298	124.252	111.505	919.682	1042.710	1078.696	-8.01	-3.34	11.22
Rajasthan	1.270	0.701	0.594	0.704	11.270	4.549	4.060	18.07	12.05	-44.80
Tamil Nadu	111.984	70.948	94.377	70.142	940.564	773.496	919.628	-24.82	-15.89	-36.64
Tripura	135.062	109.507	101.479	121.957	1181.563	982.559	829.606	7.91	18.44	-18.92
Offshore	1589.078	1434.557	1492.607	1386.234	13799.315	12721.262	13026.944	-3.89	-2.35	-9.72
Eastern Offshore	74.906	25.619	23.373	1.889	581.989	160.690	55.581	9.61	189.11	-65.80
Western Offshore	1514.172	1408.938	1469.234	1384.345	13217.326	12560.572	12971.364	-4.10	-3.17	-6.95
2. OIL	259.229	266.102	232.075	255.660	2270.774	2120.061	2058.304	14.66	3.00	2.65
Assam	235.841	243.084	215.023	233.396	2085.604	1955.841	1905.097	13.05	2.66	3.07
Arunachal Pradesh	1.168	1.029	0.968	0.954	10.400	8.508	8.770	6.30	-2.99	-11.90
Rajasthan	22.220	21.989	16.084	21.310	174.770	155.712	144.437	36.71	7.81	-1.04
3. DGH (Private / JVC)	699.551	651.910	784.547	683.924	6308.387	6305.113	6741.900	-16.91	-6.48	-6.81
Onshore	84.635	114.050	104.831	107.968	750.795	928.677	801.000	8.79	15.94	34.76
Arunachal Pradesh	0.939	1.420	2.070	1.397	8.333	14.111	16.344	-31.40	-13.66	51.17
Gujarat	6.263	7.640	7.961	7.503	55.557	69.217	79.140	-4.03	-12.54	21.99
Rajasthan	77.433	104.870	94.800	98.854	686.905	844.924	705.516	10.62	19.76	35.43
Tamil Nadu	0.000	0.120	0.000	0.214	0.000	0.425	0.000	-	-	-
CBM	52.345	33.350	20.789	30.682	464.349	290.644	161.928	60.42	79.49	-36.29
Jharkhand (CBM)	0.297	0.150	0.263	0.134	2.634	1.091	1.850	-42.97	-41.03	-49.49
Madhya Pradesh (CBM)	3.690	0.080	0.085	0.164	32.730	1.173	1.829	-5.88	-35.87	-97.83
West Bengal (CBM)	48.358	33.120	20.441	30.384	428.985	288.380	158.249	62.03	82.23	-31.51
Offshore	562.571	504.510	658.927	545.274	5093.244	5085.792	5778.972	-23.43	-11.99	-10.32
Eastern Offshore	410.909	349.130	428.758	349.239	3637.787	3399.646	3743.929	-18.57	-9.20	-15.03
Gujarat Offshore	3.540	5.800	10.489	5.422	31.407	50.219	96.009	-44.70	-47.69	63.82
Western Offshore	148.122	149.580	219.680	190.613	1424.050	1635.927	1939.034	-31.91	-15.63	0.98
TOTAL (1+2+3)	3017.508	2736.990	2914.498	2716.414	26362.668	24697.304	25397.388	-6.09	-2.76	-9.30
CBM	52.345	33.350	20.789	30.682	464.349	290.644	161.928	60.42	79.49	-36.29
Onshore	813.514	764.573	742.175	754.225	7005.761	6599.606	6429.543	3.02	2.65	-6.02
Offshore	2151.650	1939.067	2151.534	1931.508	18892.559	17807.054	18805.916	-9.88	-5.31	-9.88

Note: Totals may not tally due to rounding off figures.

*: Provisional.

**: Revised

CBM: Coal Bed Methane production.

Reasons for shortfall are indicated in the note.

MINISTRY OF PETROLEUM & NATURAL GAS
Review of Refinery Crude Throughput (in terms of crude oil processed) during the month of December, 2015 and cumulatively for the period April-December, 2015 vis-à-vis April-December, 2014

(Qty: '000' Tonnes)

Name of Undertaking/Unit	Planned production during the month	Production during the			Cumulative Production			% variation		% variation during the month under review over planned production
		Month under review *	Corresponding month of last year	Preceding month of current year	(April - December)			over last year		
					Planned production during current year	Actual production during current year **	Actual production during corresponding period of last year	During the month under review	Upto the end of the period	
(1)	(2)	(3)	(4)	(5)	(6)	(7)	(8)	(9)	(10)	(11)
A. Public Sector	10751.215	10848.589	10549.552	10547.210	91311.067	91958.032	89798.411	2.83	2.40	0.91
1. IOC, Guwahati	45.000	74.637	84.398	72.355	767.000	740.816	758.858	-11.57	-2.38	65.86
2. IOC, Barauni	533.630	602.386	346.526	578.696	4733.630	4909.967	4403.987	73.84	11.49	12.88
3. IOC, Gujarat	1221.231	1205.530	1175.273	1218.065	9721.695	10184.895	10082.770	2.57	1.01	-1.29
4. IOC, Haldia	680.000	726.618	667.490	696.871	5785.000	5756.642	5793.627	8.86	-0.64	6.86
5. IOC, Mathura	700.000	759.980	725.434	735.969	6344.000	6535.297	6340.855	4.76	3.07	8.57
6. IOC, Digboi	58.000	42.035	54.200	42.595	490.000	415.797	465.769	-22.44	-10.73	-27.53
7. IOC, Panipat	1337.088	1298.524	1346.765	1300.586	11318.132	11282.521	10478.395	-3.58	7.67	-2.88
8. IOC, Bongaigaon	204.905	208.194	210.478	154.282	1748.505	1847.585	1756.989	-1.09	5.16	1.61
Total IOC	4779.854	4917.904	4610.564	4799.419	40907.962	41673.520	40081.250	6.67	3.97	2.89
9. BPCL, Mumbai	1120.000	1149.799	1152.175	1116.467	9657.000	9940.623	9452.487	-0.21	5.16	2.66
10. BPCL, Kochi	720.000	935.222	667.285	907.061	7710.000	7990.699	7683.592	40.15	4.00	29.89
Total BPCL	1840.000	2085.022	1819.460	2023.528	17367.000	17931.322	17136.079	14.60	4.64	13.32
11. HPCL, Mumbai	633.591	719.067	711.418	673.783	5240.169	5793.384	5374.192	1.08	7.80	13.49
12. HPCL, Visakh	804.447	846.174	787.647	807.360	6738.523	6741.228	6352.117	7.43	6.13	5.19
Total HPCL	1438.038	1565.241	1499.066	1481.143	11978.692	12534.612	11726.309	4.41	6.89	8.85
13. CPCL, Manali	906.000	501.370	914.822	700.286	7640.600	6435.851	7656.911	-45.19	-15.95	-44.66
14. CPCL, Narimanam(CBR)	42.460	19.522	43.105	41.141	376.700	375.589	408.637	-54.71	-8.09	-54.02
Total CPCL	948.460	520.892	957.927	741.427	8017.300	6811.440	8065.548	-45.62	-15.55	-45.08
15. NRL, Numaligarh	242.000	229.210	226.541	218.684	1995.000	1847.176	2152.547	1.18	-14.19	-5.29
16. MRPL, Mangalore	1500.000	1523.236	1430.862	1276.170	11000.000	11114.262	10597.747	6.46	4.87	1.55
17. ONGC, Tatipaka	2.862	7.085	5.132	6.839	45.113	45.700	38.932	38.04	17.39	147.50
B. Joint Venture Sub Total	1262.295	1436.554	1452.271	1409.141	10462.295	12919.504	9786.608	-1.08	32.01	13.80
18. BORL, Bina	500.000	501.648	588.088	501.004	3700.000	4660.252	4644.281	-14.70	0.34	0.33
19. HMEL, GGSR, Bhatinda	762.295	934.906	864.183	908.137	6762.295	8259.252	5142.327	8.18	60.61	22.64
C. Private Sector	7369.453	7861.267	7724.255	7738.766	65452.157	65833.129	67102.735	1.77	-1.89	6.67
20. RIL, Jamnagar	2801.007	2831.453	2801.007	2901.525	23581.569	24360.795	23581.568	1.09	3.30	1.09
21. RIL, SEZ	3164.313	3249.339	3164.313	3143.390	28150.529	27594.435	28150.529	2.69	-1.98	2.69
Total RIL	5965.320	6080.792	5965.320	6044.915	51732.098	51955.230	51732.097	1.94	0.43	1.94
22. Essar Oil Ltd.(EOL), Vadinar	1404.133	1780.475	1758.935	1693.851	13720.059	13877.899	15370.638	1.22	-9.71	26.80
TOTAL(A+B+C)	19382.963	20146.410	19726.078	19695.118	167225.518	170710.665	166687.754	2.13	2.41	3.94

Note: may December not tally due to rounding off figures.

*: Provisional. **: Revised

Reasons for shortfall are indicated in the note.

MINISTRY OF PETROLEUM & NATURAL GAS

Refinery-wise Capacity Utilisation during the month of December, 2015 and cumulatively for the period April-December, 2015 vis-à-vis April-December, 2014

(Qty: '000' Tonnes)

Name of Undertaking/Unit	December, 2015			December, 2014			Cumulative (April - December)					
	Prorated Installed Capacity	Actual Crude Tput *	% Utilisation of I/C	Prorated Installed Capacity	Actual Crude Tput	% Utilisation of I/C	2015-16			2014-15		
							Prorated Installed Capacity	Actual Crude Tput *	% Utilisation of I/C	Prorated Installed Capacity	Actual Crude Tput	% Utilisation of I/C
(1)	(2)	(3)	(4)	(5)	(6)	(7)	(8)	(9)	(10)	(11)	(12)	(13)
A. Public Sector	10170.000	10848.589	106.67	10197.000	10549.552	103.46	90214.000	91958.032	101.93	90461.000	89798.411	99.27
1. IOC, Guwahati	85.000	74.637	87.81	85.000	84.398	99.29	751.000	740.816	98.64	753.000	758.858	100.78
2. IOC, Barauni	508.000	602.386	118.58	510.000	346.526	67.95	4508.000	4909.967	108.92	4521.000	4403.987	97.41
3. IOC, Koyali	1160.000	1205.530	103.93	1164.000	1175.273	100.97	10294.000	10184.895	98.94	10322.000	10082.770	97.68
4. IOC, Haldia	635.000	726.618	114.43	637.000	667.490	104.79	5635.000	5756.642	102.16	5651.000	5793.627	102.52
5. IOC, Mathura	678.000	759.980	112.09	679.000	725.434	106.84	6011.000	6535.297	108.72	6027.000	6340.855	105.21
6. IOC, Digboi	55.000	42.035	76.43	55.000	54.200	98.55	488.000	415.797	85.20	490.000	465.769	95.05
7. IOC, Panipat	1270.000	1298.524	102.25	1274.000	1346.765	105.71	11270.000	11282.521	100.11	11301.000	10478.395	92.72
8. IOC, Bongaigaon	199.000	208.194	104.62	200.000	210.478	105.24	1766.000	1847.585	104.62	1771.000	1756.989	99.21
Total IOC	4591.000	4917.904	107.12	4603.000	4610.564	100.16	40724.000	41673.520	102.33	40836.000	40081.250	98.15
9. BPCL, Mumbai	1016.000	1149.799	113.17	1019.000	1152.175	113.07	9016.000	9940.623	110.26	9041.000	9452.487	104.55
10. BPCL, Kochi	805.000	935.222	116.18	807.000	667.285	82.69	7138.000	7990.699	111.95	7158.000	7683.592	107.34
Total BPCL	1821.000	2085.022	114.50	1826.000	1819.460	0.00	16154.000	17931.322	111.00	16199.000	17136.079	105.78
12. HPCL, Mumbai	551.000	719.067	130.50	552.000	588.088	106.54	4884.000	5793.384	118.62	4897.000	5374.192	109.74
13. HPCL, Visakh	703.000	846.174	120.37	705.000	787.647	111.72	6236.000	6741.228	108.10	6253.000	6352.117	101.59
Total HPCL	1254.000	1565.241	124.82	1257.000	1499.066	119.26	11120.000	12534.612	112.72	11151.000	11726.309	105.16
14. CPCL, Manali	889.000	501.370	56.40	892.000	914.822	102.56	7889.000	6435.851	81.58	7911.000	7656.911	96.79
15. CPCL, Narimanam	85.000	19.522	22.97	85.000	43.105	50.71	751.000	375.589	50.01	753.000	408.637	54.27
Total CPCL	974.000	520.892	53.48	977.000	957.927	98.05	8641.000	6811.440	78.83	8664.000	8065.548	93.09
16. NRL, Numaligarh	254.000	229.210	90.24	255.000	226.541	88.84	2254.000	1847.176	81.95	2260.000	2152.547	95.25
17. MRPL, Mangalore	1270.000	1523.236	119.94	1274.000	1430.862	112.31	11270.000	11114.262	98.62	11301.000	10597.747	93.78
18. ONGC, Tatipaka	6.000	7.085	118.08	6.000	5.132	85.54	50.000	45.700	91.40	50.000	38.932	77.86
B. Joint Venture Sub Total	1270.000	1436.554	113.11	1274.000	1452.271	113.99	11270.000	12919.504	114.64	11301.000	9786.608	86.60
18. BORL, Bina	508.000	501.648	98.75	510.000	588.088	115.31	4508.000	4660.252	103.38	4521.000	4644.281	102.73
19. HMEL, GGSR, Bhatinda	762.000	934.906	122.69	764.000	864.183	113.11	6762.000	8259.252	122.14	6781.000	5142.327	75.83
C. Private Sector	6776.000	7861.267	116.02	6795.000	7724.255	113.68	60109.000	65833.129	109.52	60274.000	67102.735	111.33
20. RIL, Jamnagar	2795.000	2831.453	101.30	2803.000	2801.007	99.93	24795.000	24360.795	98.25	24863.000	23581.568	94.85
21. RIL, SEZ	2287.000	3249.339	142.08	2293.000	3164.313	138.00	20287.000	27594.435	136.02	20342.000	28150.529	138.39
Total RIL	5082.000	6080.792	119.65	5096.000	5965.320	117.06	45082.000	51955.230	115.25	45205.000	51732.097	114.44
22. Essar Oil Ltd.(EOL), Vadinar	1694.000	1780.475	105.10	1699.000	1758.935	103.53	15027.000	13877.899	92.35	15068.000	15370.638	102.01
TOTAL	18216.000	20146.410	110.60	18266.000	19726.078	107.99	161593.000	170710.665	105.64	162036.000	166687.754	102.87

*: Provisional.

I/C: Installed Capacity.

MINISTRY OF PETROLEUM & NATURAL GAS

Review of Production of Petroleum Products during the month of December, 2015 and cumulatively for the period April-December, 2015 vis-à-vis April-December, 2014

(Qty: '000' Tonnes)

Name of Undertaking/Unit	Planned production during the month	Production during the			Cumulative Production			% variation over last year		% variation during the month under review over planned production
		Month under review *	Corresponding month of last year	Preceding month of current year **	(April - December)			During the month under review	Upto the end of the period	
(1)	(2)				(3)	(4)	(5)			(6)
I. Production of Petroleum Products by Refinery										
A. Public Sector	10002.563	10238.947	9981.482	10129.431	84999.257	86965.384	84766.258	2.58	2.59	2.36
1. IOC, Guwahati	37.820	92.978	99.204	95.411	676.178	906.697	774.900	-6.28	17.01	145.84
2. IOC, Barauni	484.954	566.988	261.320	537.717	4326.335	4546.788	3977.533	116.97	14.31	16.92
3. IOC, Koyali, Gujarat	1146.094	1177.881	1123.194	1164.773	9125.196	9761.775	9489.758	4.87	2.87	2.77
4. IOC, Haldia	622.679	651.873	611.135	649.749	5248.770	5246.487	5330.310	6.67	-1.57	4.69
5. IOC, Mathura	682.082	766.866	702.185	732.367	6172.690	6364.145	6170.025	9.21	3.15	12.43
6. IOC, Digboi	57.652	38.633	53.880	39.774	478.186	403.569	465.852	-28.30	-13.37	-32.99
7. IOC, Panipat	1266.412	1265.438	1318.781	1320.834	10728.105	11320.082	10490.718	-4.04	7.91	-0.08
8. IOC, Bongaigaon	195.586	210.152	182.160	115.355	1561.146	1651.459	1566.981	15.37	5.39	7.45
Total IOC	4493.278	4770.809	4351.859	4655.980	38316.605	40201.002	38266.077	9.63	5.06	6.18
9. BPCL, Mumbai	1073.670	1062.159	1135.552	1060.551	9233.480	9470.806	9109.276	-6.46	3.97	-1.07
10. BPCL, Kochi	641.800	885.899	662.593	880.416	7136.600	7569.894	7245.632	33.70	4.48	38.03
Total BPCL	1715.470	1948.058	1798.145	1940.967	16370.080	17040.700	16354.907	8.34	4.19	13.56
11. HPCL, Mumbai	593.331	664.453	691.965	671.843	4913.338	5392.790	5094.511	-3.98	5.85	11.99
12. HPCL, Visakh	741.711	763.864	763.671	755.037	6208.944	6166.406	6003.209	0.03	2.72	2.99
Total HPCL	1335.042	1428.317	1455.637	1426.880	11122.282	11559.195	11097.720	-1.88	4.16	6.99
13. CPCL, Manali	829.468	455.103	816.405	630.325	6942.916	5858.976	7012.372	-44.26	-16.45	-45.13
14. CPCL, Narimanam(CBR)	43.181	20.219	43.736	41.796	383.094	382.018	414.343	-53.77	-7.80	-53.18
Total CPCL	872.649	475.322	860.141	672.121	7326.010	6240.994	7426.715	-44.74	-15.97	-45.53
15. NRL, Numaligarh	234.803	233.033	228.127	217.270	1930.907	1826.503	2125.160	2.15	-14.05	-0.75
16. MRPL, Mangalore	1348.500	1376.405	1282.515	1209.479	9888.915	10052.118	9457.309	7.32	6.29	2.07
17. ONGC, Tatipaka	2.821	7.003	5.058	6.734	44.459	44.873	38.370	38.44	16.95	148.25
B. Joint Venture Sub Total	1176.396	1302.229	1333.248	1296.848	9764.991	12019.929	9139.614	-2.33	31.51	10.70
18. BORL Bina	457.500	451.083	553.449	445.803	3385.500	4223.547	4315.368	-18.50	-2.13	-1.40
19. HMEL, GGSR, Bhatinda	718.896	851.146	779.799	851.045	6379.491	7796.382	4824.246	9.15	61.61	18.40
C. Private Sector	7600.044	8139.376	7859.178	8052.695	66896.972	68346.177	68435.512	3.57	-0.13	7.10
1. RIL, Jamnagar	2845.307	2831.424	2845.306	2760.106	23673.198	24414.984	23673.523	-0.49	3.13	-0.49
2. RIL (SEZ)	3393.641	3553.169	3393.641	3569.437	29935.812	30582.101	29935.812	4.70	2.16	4.70
Total RIL	6238.947	6384.593	6238.947	6329.543	53609.010	54997.086	53609.334	2.33	2.59	2.33
3. Essar Oil Ltd.(EOL),Vadinar	1361.096	1754.783	1620.231	1723.152	13287.962	13349.091	14826.178	8.30	-9.96	28.92
Total Refinery (A+B+C)	18779.003	19680.552	19173.908	19478.973	161661.221	167331.490	162341.384	2.64	3.07	4.80
II. Production of Petroleum Products by Fractionators										
ONGC	288.622	269.930	239.114	281.780	2420.646	2153.561	2060.678	12.89	4.51	-6.48
OIL	4.000	3.738	4.185	3.432	32.200	30.354	31.922	-10.68	-4.91	-6.55
GAIL	99.437	96.950	104.608	99.181	882.104	829.200	977.951	-7.32	-15.21	-2.50
D. Total Fractionators	392.059	370.618	347.907	384.393	3334.950	3013.115	3070.551	6.53	-1.87	-5.47
Grand Total (A+B+C+D)	19171.062	20051.170	19521.815	19863.366	164996.170	170344.606	165411.936	2.71	2.98	4.59

Note: Totals may not tally due to rounding off figures.

*: Provisional.

**: Revised