

MINISTRY OF PETROLEUM & NATURAL GAS

Review of Crude Oil Production during the month of August, 2015 and cumulatively for the period April-August, 2015 vis-à-vis April-August, 2014

(Qty: '000' Tonnes)

Name of Undertaking/Unit/State	Planned production during the month	Production during the			Cumulative Production			% variation over last year		% variation during the month under review over planned production
		Month under review *	Corresponding month of last year	Preceding month of current year	(April - August)			During the month under review	Upto the end of the period	
					Planned production during current year	Actual production during current year **	Actual production during corresponding period of last year			
(1)	(2)	(3)	(4)	(5)	(6)	(7)	(8)	(9)	(10)	(11)
1. ONGC	1934.273	1929.231	1859.617	1880.940	9429.955	9384.609	9253.130	3.74	1.42	-0.26
Onshore	511.982	492.736	507.500	476.053	2501.011	2412.770	2600.883	-2.91	-7.23	-3.76
Andhra Pradesh	23.976	25.447	16.618	26.944	114.713	126.946	104.219	53.13	21.81	6.14
Assam ^	83.912	81.605	94.682	82.285	404.953	406.184	478.174	-13.81	-15.06	-2.75
Gujarat	381.716	363.953	376.626	345.104	1873.063	1769.637	1917.315	-3.36	-7.70	-4.65
Tamil Nadu	22.378	21.731	19.574	21.720	108.282	110.003	101.176	11.02	8.72	-2.89
Offshore	1422.291	1436.495	1352.117	1404.887	6928.944	6971.839	6652.246	6.24	4.80	1.00
Eastern Offshore	0.954	1.787	1.381	1.768	6.045	9.196	5.911	29.40	55.56	87.32
Western Offshore	1300.609	1321.859	1234.836	1319.227	6348.026	6420.435	6016.273	7.05	6.72	1.63
Condensates	120.728	112.849	115.900	83.892	574.873	542.208	630.062	-2.63	-13.94	-6.53
2. OIL (Onshore)	302.490	276.024	298.303	275.143	1469.855	1388.147	1428.716	-7.47	-2.84	-8.75
Assam	302.032	275.578	297.654	274.973	1467.595	1386.281	1425.419	-7.42	-2.75	-8.76
Arunachal Pradesh	0.458	0.446	0.649	0.170	2.260	1.866	3.297	-31.28	-43.40	-2.62
3. DGH (Private / JVC)	911.094	987.812	866.565	978.139	4467.871	4865.560	4875.279	13.99	-0.20	8.42
Onshore	700.519	754.123	638.858	737.326	3457.176	3724.234	3767.059	18.04	-1.14	7.65
Arunachal Pradesh	5.929	4.271	6.084	4.255	29.262	21.114	32.505	-29.80	-35.04	-27.96
Gujarat	16.383	14.152	11.200	11.888	80.634	61.360	61.602	26.36	-0.39	-13.62
Rajasthan	678.207	735.700	621.574	721.183	3347.280	3641.760	3672.952	18.36	-0.85	8.48
Offshore	210.575	233.689	227.707	240.813	1010.695	1141.326	1108.220	2.63	2.99	10.98
Eastern Offshore	106.144	111.885	110.445	119.687	495.277	602.303	522.779	1.30	15.21	5.41
Gujarat Offshore	29.270	36.126	32.959	39.749	144.459	165.928	163.718	9.61	1.35	23.43
Western Offshore	75.161	85.678	84.303	81.377	370.958	373.095	421.723	1.63	-11.53	13.99
GRAND TOTAL (1+2+3)	3147.857	3193.067	3024.485	3134.222	15367.681	15638.316	15557.125	5.57	0.52	1.44
Onshore	1514.991	1522.883	1444.661	1488.522	7428.042	7525.151	7796.658	5.41	-3.48	0.52
Offshore	1632.866	1670.184	1579.824	1645.700	7939.639	8113.165	7760.466	5.72	4.54	2.29

Note: Totals August not tally due to rounding off figures.

^: Includes crude oil production of Tripura

*: Provisional. **: Revised

Reasons for shortfall are indicated in the note.

MINISTRY OF PETROLEUM & NATURAL GAS

Review of Natural Gas Production during the month of August, 2015 and cumulatively for the period April-August, 2015 vis-à-vis April-August, 2014

(Qty: Million Cubic Meters)

Name of Undertaking/Unit/State	Planned production during the month	Production during the			Cumulative Production (April - August)			% variation over last year		% variation during the month under review over planned production
		Month under review *	Corresponding month of last year	Preceding month of current year	Planned production during current year	Actual production during current year	Actual production during corresponding period of last year	During the month under review	Upto the end of the period	
(1)	(2)	(3)	(4)	(5)	(6)	(7)	(8)	(9)	(10)	(11)
1. ONGC	2064.350	1855.946	1762.987	1684.812	9703.456	9022.625	9201.563	5.27	-1.94	-10.10
Onshore	461.675	398.845	340.665	410.605	2146.231	1987.610	2073.552	17.08	-4.14	-13.61
Andhra Pradesh	78.128	47.257	7.564	48.493	277.014	250.128	300.239	524.76	-16.69	-39.51
Assam	38.961	34.434	40.419	33.320	188.135	167.739	197.151	-14.81	-14.92	-11.62
Gujarat	103.353	114.454	112.261	111.326	513.489	574.787	597.269	1.95	-3.76	10.74
Rajasthan	1.270	0.210	0.394	0.209	6.270	2.195	2.297	-46.70	-4.45	-83.47
Tamil Nadu	105.127	88.303	103.566	94.115	509.411	462.865	543.540	-14.74	-14.84	-16.00
Tripura	134.836	114.187	76.461	123.142	651.912	529.896	433.056	49.34	22.36	-15.31
Offshore	1602.674	1457.101	1422.322	1274.207	7557.225	7035.015	7128.010	2.45	-1.30	-9.08
Eastern Offshore	75.013	21.283	1.309	21.630	285.646	107.237	7.008	1525.90	1430.28	-71.63
Western Offshore	1527.661	1435.818	1421.013	1252.577	7271.579	6927.778	7121.003	1.04	-2.71	-6.01
2. OIL	268.647	242.658	234.066	232.585	1216.873	1116.885	1152.807	3.67	-3.12	-9.67
Assam	245.259	224.696	215.436	213.171	1123.759	1035.916	1076.466	4.30	-3.77	-8.38
Arunachal Pradesh	1.168	0.416	0.620	1.053	5.784	4.613	4.769	-32.90	-3.27	-64.38
Rajasthan	22.220	17.546	18.010	18.361	87.330	76.356	71.572	-2.58	6.68	-21.04
3. DGH (Private / JVC)	721.852	737.882	739.381	701.685	3555.315	3559.402	3728.746	-0.20	-4.54	2.22
Onshore	84.635	110.851	82.748	104.597	417.715	494.291	401.425	33.96	23.13	30.98
Arunachal Pradesh	0.939	1.560	1.816	1.747	4.636	8.348	8.565	-14.10	-2.53	66.08
Gujarat	6.263	7.728	9.231	7.870	30.910	39.311	45.254	-16.28	-13.13	23.40
Rajasthan	77.433	101.563	71.701	94.980	382.169	446.632	347.606	41.65	28.49	31.16
CBM	52.345	34.304	18.372	33.930	258.347	162.476	89.270	86.72	82.01	-34.47
Jharkhand (CBM)	0.297	0.169	0.228	0.090	1.466	0.523	1.076	-25.88	-51.39	-43.09
Madhya Pradesh (CBM)	3.690	0.094	0.044	0.190	18.210	0.780	1.481	113.64	-47.33	-97.45
West Bengal (CBM)	48.358	34.041	18.100	33.650	238.672	161.173	86.713	88.07	85.87	-29.61
Offshore	584.873	592.727	638.261	563.158	2879.253	2902.635	3238.051	-7.13	-10.36	1.34
Eastern Offshore	410.909	393.491	410.479	396.034	2020.660	1958.943	2107.210	-4.14	-7.04	-4.24
Gujarat Offshore	3.540	6.006	10.596	6.834	17.474	26.859	55.180	-43.32	-51.32	69.64
Western Offshore	170.423	193.230	217.186	160.290	841.119	916.833	1075.661	-11.03	-14.77	13.38
TOTAL (1+2+3)	3054.849	2836.486	2736.434	2619.082	14475.644	13698.912	14083.116	3.66	-2.73	-7.15
CBM	52.345	34.304	18.372	33.930	258.347	162.476	89.270	86.72	82.01	-34.47
Onshore	814.958	752.354	657.479	747.787	3780.819	3598.787	3627.784	14.43	-0.80	-7.68
Offshore	2187.547	2049.828	2060.583	1837.365	10436.478	9937.650	10366.061	-0.52	-4.13	-6.30

Note: Totals August not tally due to rounding off figures.

*: Provisional. **: Revised

CBM: Coal Bed Methane production.

Reasons for shortfall are indicated in the note.

MINISTRY OF PETROLEUM & NATURAL GAS

Review of Refinery Crude Throughput (in terms of crude oil processed) during the month of August, 2015 and cumulatively for the period April-August, 2015 vis-à-vis April-August, 2014

(Qty: '000' Tonnes)

Name of Undertaking/Unit	Planned production during the month	Production during the			Cumulative Production			% variation over last year		% variation during the month under review over planned production
		Month under review *	Corresponding month of last year	Preceding month of current year	(April - August)			During the month under review	Upto the end of the period	
					Planned production during current year	Actual production during current year **	Actual production during corresponding period of last year			
(1)	(2)	(3)	(4)	(5)	(6)	(7)	(8)	(9)	(10)	(11)
A. Public Sector	9903.778	10296.550	10456.089	10053.747	49870.514	50938.708	49132.043	-1.53	3.68	3.97
1. IOC, Guwahati	93.000	78.504	80.145	84.597	449.000	445.168	415.247	-2.05	7.21	-15.59
2. IOC, Barauni	533.630	565.999	511.891	533.943	2633.630	2642.718	2731.675	10.57	-3.26	6.07
3. IOC, Gujarat	973.395	1190.816	1111.819	1256.236	4927.250	5431.429	5594.674	7.11	-2.92	22.34
4. IOC, Haldia	560.000	667.202	649.983	663.362	3105.000	3307.386	3220.980	2.65	2.68	19.14
5. IOC, Mathura	651.000	703.472	663.383	757.257	3488.000	3568.045	3606.196	6.04	-1.06	8.06
6. IOC, Digboi	58.000	53.402	46.227	49.060	266.000	238.182	252.068	15.52	-5.51	-7.93
7. IOC, Panipat	1060.000	1086.831	1314.783	1191.240	6306.000	6149.961	5368.968	-17.34	14.55	2.53
8. IOC, Bongaigaon	204.905	212.166	193.913	213.414	1011.305	1092.677	912.036	9.41	19.81	3.54
Total IOC	4133.930	4558.392	4572.144	4749.109	22186.186	22875.566	22101.844	-0.30	3.50	10.27
9. BPCL, Mumbai	1076.000	1094.920	1139.414	1099.242	5326.000	5550.786	5107.427	-3.90	8.68	1.76
10. BPCL, Kochi	910.000	938.091	945.548	928.297	4490.000	4591.333	4358.146	-0.79	5.35	3.09
Total BPCL	1986.000	2033.011	2084.962	2027.539	9816.000	10142.119	9465.573	-2.49	7.15	2.37
11. HPCL, Mumbai	633.593	693.288	679.341	689.869	2793.554	3006.363	2758.855	2.05	8.97	9.42
12. HPCL, Visakh	804.447	858.162	800.175	466.226	3572.633	3458.997	3504.152	7.25	-1.29	6.68
Total HPCL	1438.040	1551.450	1479.516	1156.095	6366.187	6465.360	6263.007	4.86	3.23	7.89
13. CPCL, Manali	906.000	500.876	829.929	707.335	4075.000	3921.083	4263.306	-39.65	-8.03	-44.72
14. CPCL, Narimanam(CBR)	42.460	48.287	42.730	49.075	209.580	227.859	247.814	13.00	-8.05	13.72
Total CPCL	948.460	549.163	872.659	756.410	4284.580	4148.942	4511.120	-37.07	-8.03	-42.10
15. NRL, Numaligarh	242.000	252.93427	250.715	252.55759	1041.000	918.563	1223.204	0.89	-24.91	4.52
16. MRPL, Mangalore	1150.000	1349.041	1190.832	1106.756	6150.000	6366.613	5545.385	13.29	14.81	17.31
17. ONGC, Tatipaka	5.347	2.558	5.260	5.281	26.561	21.545	21.910	-51.36	-1.67	-52.16
B. Joint Venture Sub Total	1262.295	1557.552	522.547	1553.195	5692.295	7002.523	4714.573	198.07	48.53	23.39
18. BORL, Bina	500.000	620.193	522.547	631.075	1930.000	2425.001	2278.916	18.69	6.41	24.04
19. HMEL, GGSR, Bhatinda	762.295	937.358	0.000	922.120	3762.295	4577.521	2435.657	-	87.94	22.97
C. Private Sector	7329.180	7757.641	7559.141	7061.516	36370.084	36616.403	36833.929	2.63	-0.59	5.85
20. RIL, Jamnagar	2748.942	2787.694	2748.942	2815.981	12603.854	13081.638	12603.854	1.41	3.79	1.41
21. RIL, SEZ	3108.905	3211.048	3108.905	2490.205	15729.905	14848.711	15729.905	3.29	-5.60	3.29
Total RIL	5857.847	5998.742	5857.847	5306.186	28333.759	27930.349	28333.759	2.41	-1.42	2.41
22. Essar Oil Ltd.(EOL), Vadinar	1471.333	1758.899	1701.294	1755.330	8036.326	8686.054	8500.170	3.39	2.19	19.54
TOTAL(A+B+C)	18495.253	19611.742	18537.776	18668.458	91932.893	94557.633	90680.544	5.79	4.28	6.04

Note: Totals August not tally due to rounding off figures.

*: Provisional. **:Revised

Reasons for shortfall are indicated in the note.

MINISTRY OF PETROLEUM & NATURAL GAS

Refinery-wise Capacity Utilisation during the month of August, 2015 and cumulatively for the period April-August, 2015 vis-à-vis April-August, 2014

(Qty: '000' Tonnes)

Name of Undertaking/Unit	August, 2015			August, 2014			Cumulative (April - August)					
	Prorated Installed Capacity	Actual Crude T'put *	% Utilisation of I/C	Prorated Installed Capacity	Actual Crude T'put	% Utilisation of I/C	2015-16			2014-15		
							Prorated Installed Capacity	Actual Crude T'put *	% Utilisation of I/C	Prorated Installed Capacity	Actual Crude T'put	% Utilisation of I/C
(1)	(2)	(3)	(4)	(5)	(6)	(7)	(8)	(9)	(10)	(11)	(12)	(13)
A. Public Sector	10170.000	10296.550	101.24	10197.000	10456.089	102.54	50192.000	50938.708	101.49	50192.000	49132.043	97.89
1. IOC, Guwahati	85.000	78.504	92.36	85.000	80.145	94.29	418.000	445.168	106.50	418.000	415.247	99.34
2. IOC, Barauni	508.000	565.999	111.42	510.000	511.891	100.37	2508.000	2642.718	105.37	2508.000	2731.675	108.92
3. IOC, Koyali	1160.000	1190.816	102.66	1164.000	1111.819	95.52	5727.000	5431.429	94.84	5727.000	5594.674	97.69
4. IOC, Haldia	635.000	667.202	105.07	637.000	649.983	102.04	3135.000	3307.386	105.50	3135.000	3220.980	102.74
5. IOC, Mathura	678.000	703.472	103.76	679.000	663.383	97.70	3344.000	3568.045	106.70	3344.000	3606.196	107.84
6. IOC, Digboi	55.000	53.402	97.09	55.000	46.227	84.05	272.000	238.182	87.57	272.000	252.068	92.67
7. IOC, Panipat	1270.000	1086.831	85.58	1274.000	1314.783	103.20	6270.000	6149.961	98.09	6270.000	5368.968	85.63
8. IOC, Bongaigaon	199.000	212.166	106.62	200.000	193.913	96.96	982.000	1092.677	111.27	982.000	912.036	92.88
Total IOC	4591.000	4558.392	99.29	4603.000	4572.144	99.33	22657.000	22875.566	100.96	22657.000	22101.844	97.55
9. BPCL, Mumbai	1016.000	1094.920	107.77	1019.000	1139.414	111.82	5016.000	5550.786	110.66	5016.000	5107.427	101.82
10. BPCL, Kochi	805.000	938.091	116.53	807.000	945.548	117.17	3971.000	4591.333	115.62	3971.000	4358.146	109.75
Total BPCL	1821.000	2033.011	111.64	1826.000	2084.962	0.00	8988.000	10142.119	112.84	8988.000	9465.573	105.31
12. HPCL, Mumbai	551.000	693.288	125.82	552.000	522.547	94.66	2717.000	3006.363	110.65	2717.000	2758.855	101.54
13. HPCL, Visakh	703.000	858.162	122.07	705.000	800.175	113.50	3470.000	3458.997	99.68	3470.000	3504.152	100.98
Total HPCL	1254.000	1551.450	123.72	1257.000	1479.516	117.70	6187.000	6465.360	104.50	6187.000	6263.007	101.23
14. CPCL, Manali	889.000	500.876	56.34	892.000	829.929	93.04	4389.000	3921.083	89.34	4389.000	4263.306	97.14
15. CPCL, Narimanam	85.000	48.287	56.81	85.000	42.730	50.27	418.000	227.859	54.51	418.000	247.814	59.29
Total CPCL	974.000	549.163	56.38	977.000	872.659	89.32	4807.000	4148.942	86.31	4807.000	4511.120	93.84
16. NRL, Numaligarh	254.000	252.934	99.58	255.000	250.715	98.32	1254.000	918.563	73.25	1254.000	1223.204	97.54
17. MRPL, Mangalore	1270.000	1349.041	106.22	1274.000	1190.832	93.47	6270.000	6366.613	101.54	6270.000	5545.385	88.44
18. ONGC, Tatipaka	6.000	2.558	42.64	6.000	5.260	87.67	28.000	21.545	76.94	28.000	21.910	78.25
B. Joint Venture Sub Total	1270.000	1557.552	122.64	1274.000	522.547	41.02	6270.000	7002.523	111.68	6270.000	4714.573	75.19
18. BORL, Bina	508.000	620.193	122.09	510.000	522.547	102.46	2508.000	2425.001	96.69	2508.000	2278.916	90.87
19. HMEL, GGSR, Bhatinda	762.000	937.358	123.01	764.000	0.000	0.00	3762.000	4577.521	121.68	3762.000	2435.657	64.74
C. Private Sector	6776.000	7757.641	114.49	6795.000	7559.141	111.25	33443.000	36616.403	109.49	33443.000	36833.929	110.14
20. RIL, Jamnagar	2795.000	2787.694	99.74	2803.000	2748.942	98.07	13795.000	13081.638	94.83	13795.000	12603.854	91.37
21. RIL, SEZ	2287.000	3211.048	140.40	2293.000	3108.905	135.58	11287.000	14848.711	131.56	11287.000	15729.905	139.36
Total RIL	5082.000	5998.742	118.04	5096.000	5857.847	114.95	25082.000	27930.349	111.36	25082.000	28333.759	112.96
22. Essar Oil Ltd.(EOL), Vadinar	1694.000	1758.899	103.83	1699.000	1701.294	100.14	8361.000	8686.054	103.89	8361.000	8500.170	101.66
TOTAL	18216.000	19611.742	107.66	18266.000	18537.776	101.49	89905.000	94557.633	105.18	89905.000	90680.544	100.86

*: Provisional.

I/C: Installed Capacity.

MINISTRY OF PETROLEUM & NATURAL GAS

Review of Production of Petroleum Products during the month of August, 2015 and cumulatively for the period April-August, 2015 vis-à-vis April-August, 2014

(Qty: '000' Tonnes)

Name of Undertaking/Unit	Planned production during the month	Production during the			Cumulative Production			% variation over last year		% variation during the month under review over planned production
		Month under review *	Corresponding month of last year	Preceding month of current year **	(April - August)		During the month under review	Upto the end of the period		
					Planned production during current year	Actual production during current year			Actual production during corresponding period of last year	
(1)	(2)	(3)	(4)	(5)	(6)	(7)	(8)	(9)	(10)	(11)
I. Production of Petroleum Products by Refinery										
A. Public Sector	9263.647	9801.741	9756.743	9495.088	46414.993	48005.608	46265.131	0.46	3.76	5.81
1. IOC, Guwahati	83.401	106.909	56.175	116.416	394.105	531.332	394.720	90.31	34.61	28.19
2. IOC, Barauni	484.954	519.447	460.723	486.045	2417.984	2442.817	2484.060	12.75	-1.66	7.11
3. IOC, Koyali, Gujarat	951.887	1158.094	1060.581	1174.530	4637.204	5172.367	5267.698	9.19	-1.81	21.66
4. IOC, Haldia	496.700	615.824	591.011	621.512	2800.591	3043.058	2984.712	4.20	1.95	23.98
5. IOC, Mathura	625.660	635.565	630.586	721.830	3385.351	3438.633	3528.420	0.79	-2.54	1.58
6. IOC, Digboi	57.652	52.905	46.040	49.833	263.588	230.415	254.447	14.91	-9.44	-8.23
7. IOC, Panipat	1016.015	1142.873	1274.376	1166.616	5944.218	6174.450	5288.395	-10.32	16.75	12.49
8. IOC, Bongaigaon	184.886	187.968	168.172	203.282	912.526	979.500	810.165	11.77	20.90	1.67
Total IOC	3901.154	4419.585	4287.664	4540.064	20755.566	22012.572	21012.617	3.08	4.76	13.29
9. BPCL, Mumbai	1028.480	1044.063	1111.761	1067.880	5093.980	5305.651	4923.857	-6.09	7.75	1.52
10. BPCL, Kochi	849.500	896.197	883.290	864.039	4191.300	4347.964	4074.408	1.46	6.71	5.50
Total BPCL	1877.980	1940.260	1995.051	1931.919	9285.280	9653.615	8998.265	-2.75	7.28	3.32
11. HPCL, Mumbai	598.346	668.320	631.525	654.316	2621.075	2723.852	2620.322	5.83	3.95	11.69
12. HPCL, Visakh	741.711	796.128	719.700	386.582	3290.169	3114.037	3295.540	10.62	-5.51	7.34
Total HPCL	1340.057	1464.448	1351.224	1040.898	5911.244	5837.890	5915.861	8.38	-1.32	9.28
13. CPCL, Manali	827.372	442.470	722.987	648.922	3689.065	3588.975	3896.982	-38.80	-7.90	-
14. CPCL, Narimanam(CBR)	43.181	49.060	43.554	49.848	213.137	231.487	251.031	12.64	-7.79	-
Total CPCL	870.553	491.530	766.541	698.770	3902.202	3820.462	4148.013	-35.88	-7.90	-43.54
15. NRL, Numaligarh	234.803	257.094	248.985	248.021	1005.760	895.485	1194.178	3.26	-25.01	9.49
16. MRPL, Mangalore	1033.830	1226.309	1102.097	1030.225	5528.765	5764.514	4974.597	11.27	15.88	18.62
17. ONGC, Tatipaka	5.270	2.515	5.181	5.191	26.176	21.070	21.600	-51.46	-2.45	-52.28
B. Joint Venture Sub Total	1177.243	1432.910	470.726	1502.911	5314.437	6514.761	4333.082	204.40	50.35	21.72
18. BORL Bina	457.500	574.264	470.726	605.141	1765.950	2187.487	2072.360	22.00	5.56	25.52
19. HMEL, GGSR, Bhatinda	719.743	858.646	0.000	897.770	3548.487	4327.274	2260.721	-	91.41	19.30
C. Private Sector	7481.712	8018.917	7624.589	7948.565	37081.273	37900.436	37511.640	5.17	1.04	7.18
1. RIL, Jamnagar	2838.883	2725.828	2838.883	2867.485	12687.080	13092.078	12687.405	-3.98	3.19	-3.98
2. RIL (SEZ)	3218.674	3619.791	3218.674	3332.723	16613.674	16483.578	16613.674	12.46	-0.78	12.46
Total RIL	6057.557	6345.619	6057.557	6200.208	29300.754	29575.656	29301.079	4.76	0.94	4.76
3. Essar Oil Ltd.(EOL), Vadinar	1424.154	1673.298	1567.032	1748.357	7780.519	8324.780	8210.561	6.78	1.39	17.49
Total Refinery (A+B+C)	17922.602	19253.567	17852.058	18946.564	88810.703	92420.805	88109.853	7.85	4.89	7.43
II. Production of Petroleum Products by Fractionators										
ONGC	298.960	274.126	229.360	204.466	1272.517	1088.423	1150.836	19.52	-5.42	-8.31
OIL	3.850	3.425	3.926	3.195	16.600	15.926	15.617	-12.76	1.98	-11.04
GAIL	99.437	91.164	107.871	67.989	490.770	437.491	539.354	-15.49	-18.89	-8.32
D. Total Fractionators	402.247	368.715	341.157	275.650	1779.887	1541.840	1705.807	8.08	-9.61	-8.34
Grand Total (A+B+C+D)	18324.849	19622.282	18193.214	19222.214	90590.590	93962.645	89815.660	7.85	4.62	7.08

Note: Totals August not tally due to rounding off figures.

*: Provisional.

**: Revised

Brief note on the Production Performance of Oil & Natural Gas Sector for the month of August, 2015 and cumulatively for the period April-August, 2015 vis-à-vis April-August, 2014

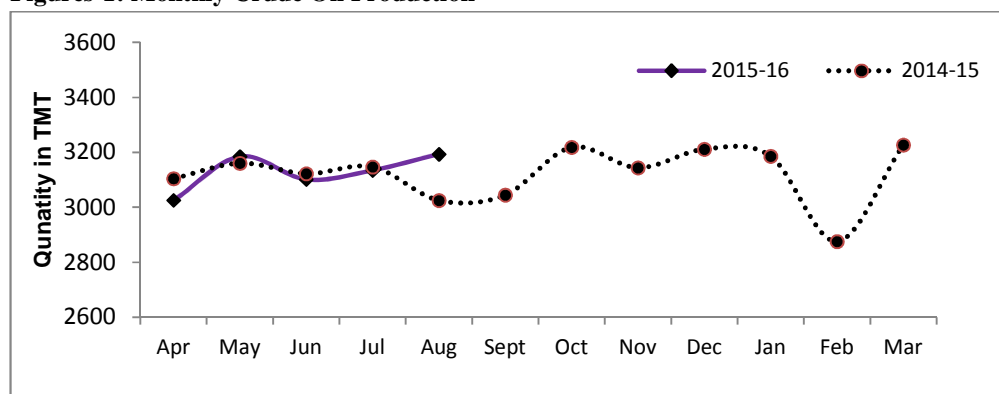
1. Crude Oil Production

1.1 Indigenous crude oil production (including condensate) during August, 2015 was 3193.067 TMT which is 1.44% higher than the target for the month and 5.57% higher than the production during corresponding period of last year. Cumulative crude oil production during April-August, 2015 was 15638.316 TMT which is 1.72% higher than target for the period and 0.52% higher than the production during corresponding period of last year. Unit-wise and state-wise crude oil production is given at annexure-I. Unit-wise crude oil production (including condensate) for the month of August, 2015 and cumulatively for the period April-August, 2015 vis-à-vis same period of last year has been shown in table-1.1 and month-wise in figure-1.1

Table 1.1: Crude Oil Production (TMT)

Oil Company	Target	August (Month)			April-August (Cumulative)				
	2015-16 (Apr-Mar)	2015-16			2014-15	2015-16		2014-15	Change (%)
		Target	Prod.	% achievement	Prod.	Target	Prod.	Prod.	
ONGC	22732	1934	1929	99.74	1860	9430	9385	9253	1.42
OIL	3595	302	276	91.25	298	1470	1388	1429	-2.84
PSC Fields	10719	911	988	108.42	867	4468	4866	4875	-0.20
Total	37046	3148	3193	101.44	3024	15368	15638	15557	0.52

Figures-1: Monthly Crude Oil Production



1.2 ONGC's crude oil production during August, 2015 was 1929.231 TMT which is 0.26% lower than the target for the month and 3.74% higher than the production achieved in the corresponding month of last year. ONGC's cumulative production during April-August, 2015 was 9384.609 TMT which is 0.48% lower than the cumulative target and 1.42% higher than the production during the corresponding period of last year. The shortfall in ONGC's production was due to following reason:

- Ahmedabad & Mehsana, Gujarat: After effects of cyclonic storm in July'15; unplanned power shutdown; closure of Kalol-Ramol GAIL line leakage; increase in number of flowing wells fallen sick in Santhal field; increase in water cut in Lanwa field.
- Assam: Power shut down, low gas injection pressure.

1.3 OIL's crude oil production during August 2015 was 276.024 TMT which is 8.75% lower than the target for the month and 7.47% lower than the production achieved in the corresponding month of last year. OIL's cumulative production during April-August, 2015 was 1388.147 TMT which is 5.56% lower than the cumulative target and 2.84% lower than the production during the corresponding period of last year. Reasons for shortfall in production are given below:

- The net realization from old wells is 97 % of planned target. The gap is mainly due to bandhs, blockades and flood because of continuous rainfall.
- Retrieval of wellhead potential by workover effort has exhibited a diminishing trend because of ageing of the major oilfields.
- Potential build-up by drilling effort falls short of expectation because of limited structural traps which can be exploited, and plateauing of majority of the established oilfields.

1.4 Pvt. /JVs' crude oil production during August, 2015 was 987.812 TMT which is 8.42% higher than the target for the month and 13.99% higher than production of corresponding month of last year. Pvt./JVs' cumulative production during April-August, 2015 was 4865.560 TMT which is 8.90% higher than the cumulative target and 0.20% lower than the production during the corresponding period of last year. Reasons for shortfall in production are given below:

- Repeated sand ingress in existing producers of Kharsang field in Arunachal Pradesh.
- PCP stopped due to stuck up of polished rod in Allora field. Well SD No. 1 is kept closed. ND No. 1A is under production in Dholasan Field.
- Lack of adequate EPS facility to handle increasing water in existing wells in CB-ONN-2000/1, Gujarat.

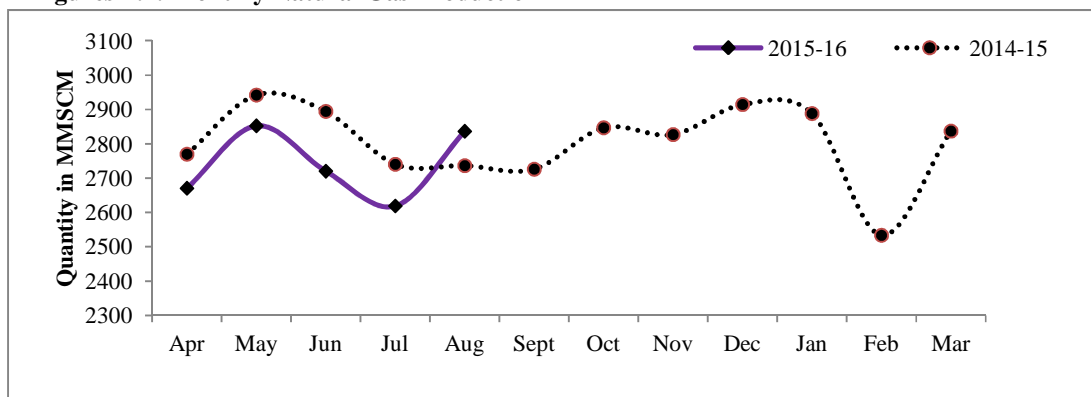
2. Natural Gas Production

2.1 Natural Gas Production during August, 2015 was 2836.486 MMSCM which is 7.15% lower than the target for the month and 3.66% higher than the production during corresponding period of last year. Cumulative natural gas production during April-August, 2015 was 13698.912 MMSCM which is 5.37% lower than the target for the period and 2.73% lower than the production during corresponding period of last year. Unit-wise and state-wise natural gas production is given at annexure-II. Unit-wise natural gas production for the month of August, 2015 and cumulatively for the period April-August, 2015 vis-à-vis same period of last year has been shown in table-2.1 and month-wise in figure-2.1.

Table 2.1: Natural Gas Production (MMSCM)

Oil Company	Target	August (Month)			April-August (Cumulative)				
	2015-16 (Apr-Mar)	2015-16			2014-15	2015-16		2014-15	Change (%)
		Target	Prod.	% achievement	Prod.	Target	Prod.	Prod.	
ONGC	23908	2064	1856	89.90	1763	9703	9023	9202	-1.94
OIL	3010	269	243	90.33	234	1217	1117	1153	-3.12
PSC Fields	8362	722	738	102.22	739	3555	3559	3729	-4.54
Total	35280	3055	2836	92.85	2736	14476	13699	14083	-2.73

Figures-2.1: Monthly Natural Gas Production



2.2 ONGC's natural gas production during August, 2015 was 1855.946 MMSCM which is 10.10% lower than the target for the month and 5.27% higher than the production achieved in the corresponding month of last year. ONGC's cumulative natural gas production during April-August, 2015 was 9022.625 MMSCM which is 7.02% lower than the cumulative target and 1.94% lower than the production during the corresponding period of last year. Reasons for the shortfall are given below:

- ☞ Bassein & Satellite: Shutdown taken for re-routing of 42" SBHT (South Bassein Heera Trunk line).
- ☞ EOA: Delay in commencement of production from one deep water well planned in Eastern offshore and restricted withdrawal by GAIL in view of pipeline safety issues.
- ☞ Ahmedabad: Closure of wells due to unplanned shut down of GAIL Gas line from Ahmedabad/Kalol to Ramol. Decline in associated gas production in South Kadi, Limbodara & Gamij fields.
- ☞ Assam: Less associated gas production, less off-take by GAIL/ APGCL.
- ☞ Tripura: Less off take by OTPC due to operational issues of OTPC.
- ☞ Rajahmundry: Tatipaka-Lanco pipeline incident, GAIL Pipeline still under repair (closure of 39 Gas wells).
- ☞ Cauvery: Less gas production due to less demand by GAIL

2.3 OIL's natural gas production during August, 2015 was 242.658 MMSCM which is 9.67% lower than the target for the month and 3.67% higher than the production achieved in the corresponding month of last year. OIL's cumulative natural gas production during April-August, 2015 was 1116.885 MMSCM which is 8.22% lower than the cumulative target and 3.12% lower than the production during the corresponding period of last year. Reasons for the shortfall are given below:

- Production affected due to less gas withdrawal by the potential customers like BVFCL, NTPS, LTPS, BCPL and RRVUNL.

2.4 Pvt. /JVs' natural gas production during August, 2015 was 737.882 MMSCM which is 2.22% higher than the target for the month and 0.2% lower than the production achieved in the corresponding month of last year. Pvt. /JV's cumulative natural gas production during April-August, 2015 was 3559.402 MMSCM which is 0.11% higher than the cumulative target and 4.54% lower than the production during the corresponding period of last year. Reasons for the shortfall are given below:

- RIL (KG-D6): Underperformance of MA wells.
- JV of BG, RIL & ONGC (M&S Tapti): Under performance of recently drilled 6 wells. Operator proposed for field abandonment.
- GSPC(KG-OSN-2001/3): Less than expected trial gas production from 3 wells.
- Prolonged dewatering in new wells in Raniganj South and Forest Clearance received late in Raniganj East
- Incidental CBM gas being produced and sold in Jharia, Jharkhand.
- Zero production since 9 June 2015 in Sohagpur East, M.P. and Incidental CBM gas being produced in small quantities in Sohagpur West, M.P.

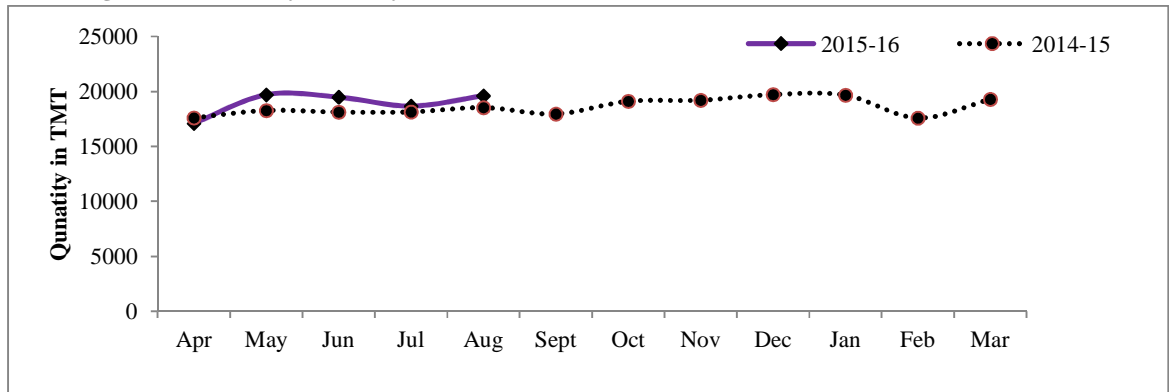
3. Refinery Production (in terms of Crude oil processed):

3.1 Refinery production during August, 2015 was 19611.742 TMT which is 6.04% higher than the target for the month and 5.79% higher than the production during corresponding period of last year. Cumulative refinery production during April-August, 2015 was 94557.633 TMT which is 2.86% higher than the target for the period and 4.28% higher than the production during corresponding period of last year. Unit-wise refinery production is given at annexure-III. Unit-wise refinery production for the month of August, 2015 and cumulatively for the period April-August, 2015 vis-à-vis same period of last year has been shown in table-3.1 and month-wise in figure-3.1.

Table 3.1: Refinery Production (TMT)

Oil Company	Target	August (Month)				April-August (Cumulative)			
	2015-16 (Apr-Mar)	2015-16			2014-15	2015-16			Change (%)
		Target	Actual	% achievement	Actual	Target	Actual	Actual	
IOCL	55000	4134	4558	110.27	4572	22186	22876	22102	3.50
BPCL	23197	1986	2033	102.37	2085	9816	10142	9466	7.15
HPCL	16200	1438	1551	107.89	1480	6366	6465	6263	3.23
CPCL	10800	948	549	57.90	873	4285	4149	4511	-8.03
NRL	2700	242	253	104.52	251	1041	919	1223	-24.91
MRPL	15250	1150	1349	117.31	1191	6150	6367	5545	14.81
ONGC	61	5	3	47.84	5	27	22	22	-1.67
BORL	5200	500	620	124.04	523	1930	2425	2279	6.41
HMEL	9000	762	937	122.97	0	3762	4578	2436	87.94
RIL	68042	5858	5999	102.41	5858	28334	27930	28334	-1.42
EOL	18793	1471	1759	119.54	1701	8036	8686	8500	2.19
TOTAL	224242	18495	19612	106.04	18538	91933	94558	90681	4.28

Figure 3.1: Monthly Refinery Production (TMT)



3.2 PSU Refineries' production during August, 2015 was 10296.550 TMT which is 3.97% higher than the target for the month and 1.53% lower than the production achieved in the corresponding month of last year. Cumulative refinery production of PSUs during April-August, 2015 was 50938.708 TMT which is 2.14% higher than the cumulative target and 3.68% higher than the production during the corresponding period of last year. Reasons for shortfalls in PSU refineries are given below:

- ❧ IOCL, Guwahati: Throughput is restricted in line with crude availability.
- ❧ IOCL, Digboi: Throughput is restricted in line with crude availability.
- ❧ BPCL, Mumbai: Crude throughput during Aug'15 lower than Aug'14 due to shutdown of CCU & CCR units for maintenance activities and gain in intermediate feed stocks as compare to depletion in Aug'14.
- ❧ CPCL, Manali: Shortfall in production during Aug'15 due to planned shutdown of Refinery-3 in July-Aug'15.
- ❧ ONGC, Tatipaka: Shortfall in production due to Naphtha / LSHS up-liftment problems because of low demand

3.3 Production in JV refineries during August, 2015 was 1557.552 TMT which is 23.39% higher than the target for the month and 198.07% higher than the production achieved in the corresponding month of last year. Cumulative refinery production in JV refineries during April-August, 2015 was 7002.523 TMT which is 23.02% higher than the cumulative target and 48.53% higher than the production during the corresponding period of last year.

3.4 Production in private refineries during August, 2015 was 7757.641 TMT which is 5.85% higher than the target for the month and 2.63% higher than the production achieved in the corresponding month of last year. Cumulative refinery production in private refineries during April-August, 2015 was 36616.403 TMT which is 0.68% higher than the cumulative target and 0.59% lower than the production during the corresponding period of last year.

3.5 Refinery-wise details of the capacity utilization and Production of petroleum products during the month of August, 2015 and cumulatively for the period April-August, 2015 vis-à-vis April-August,2014 are given in Annexures-IV to V respectively.
