

Government of India
Ministry of Petroleum and Natural Gas
Economics & Statistics Division

New Delhi
Dated the 20th May, 2016

Monthly Production Report

April 2016

Crude Oil

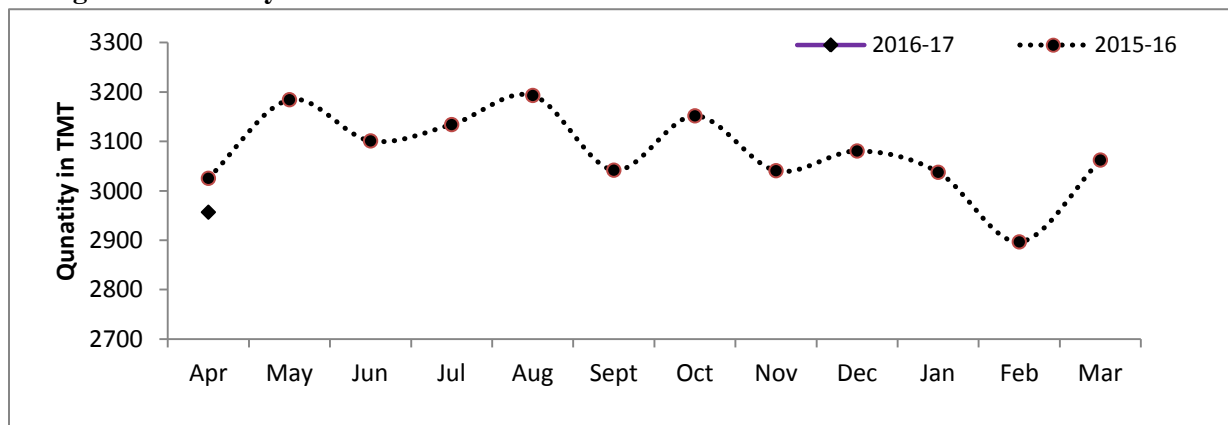
1. Crude oil production¹ during April 2016 was 2956.81 TMT which is 0.14% lower than monthly target and 2.27% lower than the production achieved in April 2015. Unit-wise and state-wise crude oil production is given at Annexure-I. Unit-wise crude oil production for the month of April, 2016 vis-à-vis April, 2015 has been shown in Table-1 and month-wise in Figure-1.

Table 1: Crude Oil Production (TMT)

Oil Company	Target	April (Month)			
	2016-17 (P) (Apr-Mar)	2016-17		2015-16	% over last year
		Target	Prod.	Prod.	
ONGC	22393.40	1797.05	1801.51	1815.35	99.24
OIL	3280.10	260.30	261.41	280.71	93.12
PSC Fields	10839.32	903.59	893.90	929.34	96.19
Total	36512.83	2960.93	2956.81	3025.40	97.73

P: Provisional

Figure-1: Monthly Crude Oil Production



¹ Including condensate

Unit-wise production details with reasons for shortfall have been given in following sub-section:

1.1 Crude oil production by ONGC during April, 2016 was 1801.51 TMT which is 0.25 % higher than the monthly target but 0.76% less when compared with April 2015. Reasons for shortfall in production are as under:

- Offshore: Carrying out reconstruction activities under 'Reconstruction of BPA & BPB Platforms' Project. BPB shutdown affected condensate receipt at Hazira
- Mehsana: Less than envisaged production due to less air injection in Santhal, stoppage of air injection in Lanwa field due to high H₂S, increase in number of sick wells & water cut
- Assam: Low gas lift pressure in Geleki field due to non-availability of gas lift compressor
- Cauvery: Less than envisaged production from Kamlapuram, & Narimanam fields

1.2 Crude oil production by OIL during April, 2016 was 261.41 TMT which is 0.43% higher than monthly target but 6.88% less when compared with April 2015. Reasons for shortfall in production are as under:

- Restriction in bowser movement due to Assam bandh on 18.04.2016, bandh at Tinsukia District on 12.04.2016 and incessant rain in the operational areas
- Non-availability of bowsers during Assembly elections
- Loss in production from gas lift wells due to power supply failure

1.3 Crude oil production by Pvt. /JVs during April 2016 was 893.90 TMT which is 1.07% lower than the monthly target and 3.81% less when compared with April, 2015. Reasons for shortfall in production are as under:

- Panna/Mukta: Less production due to planned shutdown of SBM from 28.04.2016 to 03.05.2016
- Cairn: Less production from RJ-ON-90/1 due to closure of 02 High water cut wells. Less production from CB-OS/2 due to stoppage of gas lift compressor for maintenance
- GSPC: Underperformance of wells in KG-OSN-2001/3
- Natural Decline in Ravva, Mangala & underperformance of Bhagyam wells in RJ-ON-90/1
- Under performance of wells of KG D6 due to sand ingress and water loading
- Production from M&S Tapti stopped in March, 2016

Natural Gas

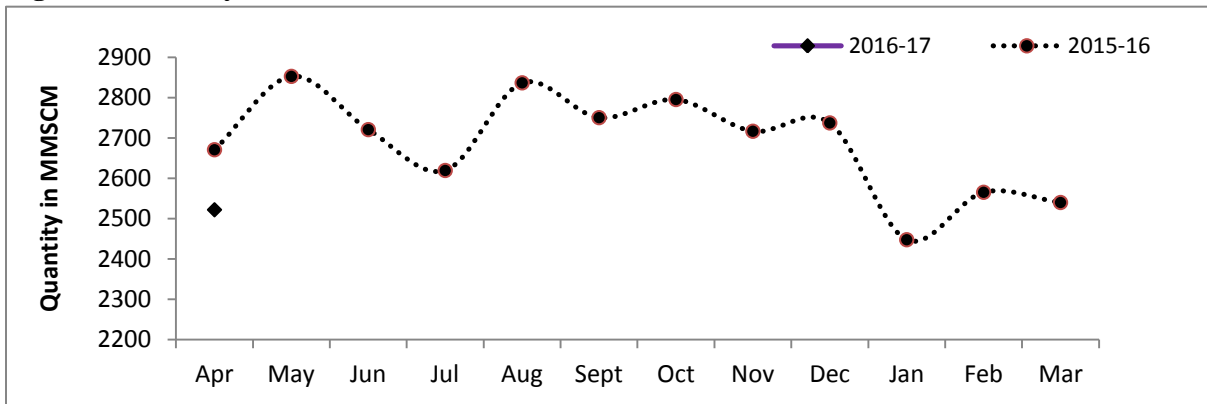
- 2 Natural gas production during April 2016 was 2488.07 MMSCM which is 1.33% lower than the target for the month and 6.83% lower than the production during corresponding period of last year Unit-wise and state-wise natural gas production is given at Annexure-II. Unit-wise natural gas production for the month of April, 2016 vis-à-vis April, 2015 has been shown in Table-2 and month-wise in Figure-2.

Table 2: Natural Gas Production (MMSCM)

Oil Company	Target	April (Month)			
	2016-17 (P) (Apr-Mar)	2016-17		2015-16	% over last year
		Target	Prod.	Prod.	
ONGC	22743.43	1621.33	1630.95	1782.20	91.51
OIL	2905.55	236.94	250.35	194.81	128.51
PSC Fields	8425.44	663.35	606.77	693.52	87.49
Total	34074.42	2521.61	2488.07	2670.53	93.17

P: Provisional

Figure-2: Monthly Natural Gas Production



Unit-wise production details with reasons for shortfall have been given in following sub-section:

- 2.1 Natural gas production by ONGC during April, 2016 was 1630.95 MMSCM which is 0.59% higher than the monthly target but 8.49% less when compared with April 2015. Reasons for shortfall in production are as under:

- Mumbai High: Reconstruction activities under “Reconstruction of BPA & BPB Platforms” Project
- Eastern Offshore: Closure of both the sub-sea wells of G1 field for carrying out tie-in works for hooking of well S2AB with G1 facilities
- Ankleshwar: Decline in production in major fields of Ankleshwar
- Tripura: Less off-take by OTPC (one unit under maintenance), Baramura TSECL & NEEPCO Monarchak

- Tamil Nadu, Cauvery: Closure of wells due to less off-take by consumers.
- 2.2 Natural gas production by OIL during April, 2016 was 250.35 MMSCM which is 5.66% higher than the monthly target and 28.51% higher when compared with April 2015.
- 2.3 Natural gas production by Pvt. /JVs during April 2016 was 606.77 MMSCM which is 8.53% lower than the monthly target and 12.51% less when compared with April, 2015. Reasons for shortfall in production are as under:
- Underperformance of wells of KG-OSN-2001/3 (GSPC).
 - Less gas production from CBM-blocks (ESSAR/RIL/GEECL) due to various issues like dewatering, lack of pipelines and consumers.
 - Under performance of wells of KG D6 due to sand ingress and water loading
 - M&S Tapti: Production stopped in March 2016.
 - Natural Decline in Ravva, PY-1 and Hazira.
 - Underperformance of wells of KG-OSN-2001/3

Refinery Production (in terms of crude oil processed)

- 3 Refinery production during April, 2016 was 20155.67 TMT which is 5.16% higher than the target for the month and 17.95% higher than the production during corresponding period of last year. Unit-wise crude oil processed for the month of April, 2016 vis-à-vis April, 2015 has been shown in Table-3 and month-wise in Figure-3.

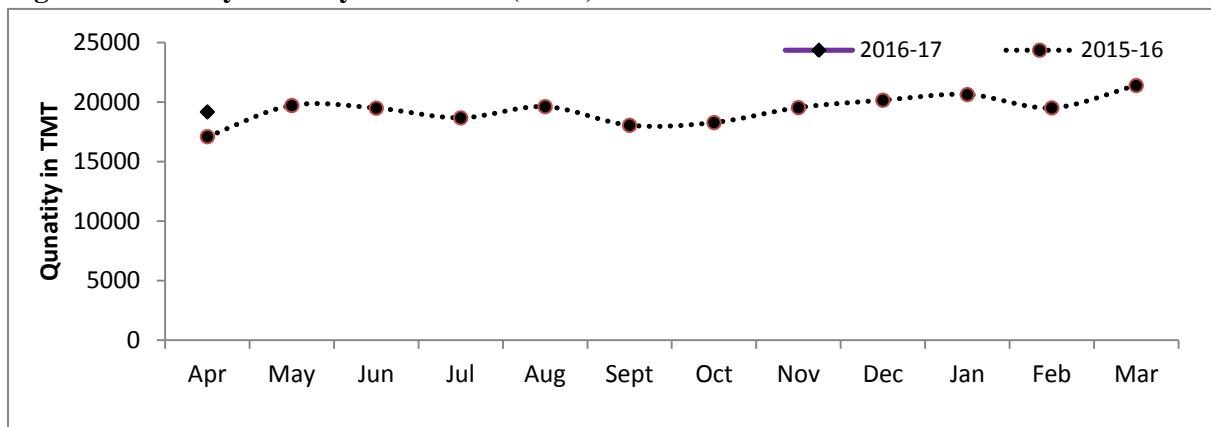
Table 3: Refinery Production (TMT)

Oil Company	Target	April (Month)			% over last year
	2016-17(P) (Apr-Mar)	2016-17		2015-16	
		Target	Actual	Actual	
IOCL	64299.99	5349.77	5313.07	4052.37	131.11
BPCL	24999.95	2065.29	2040.84	2030.39	100.51
HPCL	16500.42	1415.53	1517.69	1289.98	117.65
CPCL	10250.20	907.30	875.74	939.11	93.25
NRL	2669.99	224.17	216.53	1.46	-
MRPL	15300.00	1170.00	1165.91	1111.42	104.90
ONGC	44.59	3.87	6.81	4.00	170.16
BORL	6000.00	525.00	533.58	1.51	-
HMEL	9000.00	770.34	920.19	895.89	102.71
RIL	69561.01	5044.02	5846.48	5044.02	115.91
EOL	20291.64	1690.99	1718.85	1718.43	100.02
TOTAL	238917.79	19166.28	20155.67	17088.58	117.95

P: Provisional

Note: Refinery production by NRL and BORL during April, 2015 was negligible due to planned shutdown

Figure 3: Monthly Refinery Production (TMT)



3.1 PSU Refineries’ production during April, 2016 was 11136.58 TMT which was almost at par the target for the month and 18.11% higher than the production achieved in the corresponding month of last year. Reasons for shortfall in production by some of the refineries are as under:

- IOCL, Paradip: Throughput lower as secondary units are still under commissioning and stabilization.
- IOCL, Guwahati & Digboi: Lower crude availability
- BPCL, Mumbai: Unplanned shutdown of crude unit (CDU3) for maintenance works.
- BPCL, Kochi: Intermediate HSD stock built-up due unplanned shutdown of VGO/HDS & DHDS for one day.
- CPCL, Manali: Throughput in Manali refinery was lower than target to contain VGO, as Hydrocracker Unit throughput was limited due to high Reactor differential pressure. Hydro-cracker Unit was under shut down for 10 days since 29.04.2016 for Reactor catalyst scooping.
- MRPL, Mangalore: Throughput restricted due to water crisis
- NRL, Numaligarh: lower availability of Assam crude.

3.2 Production in JV refineries during April, 2016 was 1453.77 TMT which is 12.23% higher than the target for the month and 62.00% higher than the production achieved in the corresponding month of last year.

3.3 Production in private refineries during April, 2016 was 7565.32 TMT which is 12.33% higher than the target for the month and 11.87% higher than the production achieved in the corresponding month of last year.

3.4 Refinery-wise details of the capacity utilization and production of petroleum products during the month of April, 2016 vis-à-vis April, 2015 are given at Annexures-IV and V respectively.

Annexure-I

MINISTRY OF PETROLEUM & NATURAL GAS

(Para 1)

Crude Oil Production during the month of April, 2016 vis-à-vis April, 2015

(Qty: '000' Tonnes)

Name of Undertaking/Unit/State	Planned production during the month	Production during the		% variation during the month under review over last year's production in corresponding month	% variation during the month under review over planned production during the corresponding month
		Month under review *	Corresponding month of last year**		
(1)	(2)	(3)	(4)	(5)	(6)
1. ONGC	1797.048	1801.507	1815.345	-0.76	0.25
Onshore	473.399	478.182	485.110	-1.43	1.01
Andhra Pradesh	21.356	20.881	24.003	-13.01	-2.22
Assam ^	76.676	77.273	79.654	-2.99	0.78
Gujarat	356.624	360.316	359.569	0.21	1.04
Tamil Nadu	18.743	19.712	21.884	-9.93	5.17
Offshore	1323.649	1323.325	1330.235	-0.52	-0.02
Eastern Offshore	1.500	1.621	1.930	-16.01	8.07
Western Offshore	1215.569	1225.682	1212.116	1.12	0.83
Condensates	106.580	96.022	116.189	-17.36	-9.91
2. OIL (Onshore)	260.300	261.407	280.710	-6.88	0.43
Assam	259.700	260.763	280.297	-6.97	0.41
Arunachal Pradesh	0.600	0.644	0.413	55.93	7.33
3. DGH (Private / JVC)	903.586	893.900	929.340	-3.81	-1.07
Onshore	711.647	709.558	719.386	-1.37	-0.29
Arunachal Pradesh	3.815	3.913	4.220	-7.27	2.57
Gujarat	12.950	11.651	10.627	9.64	-10.03
Rajasthan	693.595	692.801	704.539	-1.67	-0.11
Tamil Nadu	1.287	1.193	0.000	-	-
Offshore	191.939	184.342	209.954	-12.20	-3.96
Eastern Offshore	81.201	81.236	125.457	-35.25	0.04
Gujarat Offshore	34.328	33.629	29.874	12.57	-2.04
Western Offshore	76.410	69.477	54.623	27.19	-9.07
GRAND TOTAL (1+2+3)	2960.934	2956.814	3025.395	-2.27	-0.14
Onshore	1445.346	1449.147	1485.206	-2.43	0.26
Offshore	1515.588	1507.667	1540.189	-2.11	-0.52

Note: Totals may not tally due to rounding off figures.

*: Provisional. **: Revised

^: Includes production of Tripura

Reasons for shortfall are indicated in the note.

MINISTRY OF PETROLEUM & NATURAL GAS

(Para 2)

Natural Gas Production during the month of April, 2016 vis-à-vis April, 2015

(Qty: Million Cubic Meters)

Name of Undertaking/Unit/State	Planned production during the month	Production during the		% variation during the month under review over last year's production in corresponding month	% variation during the month under review over planned production during the corresponding month
		Month under review *	Corresponding month of last year**		
(1)	(2)	(3)	(4)	(5)	(6)
1. ONGC	1621.327	1630.946	1782.200	-8.49	0.59
Onshore	427.489	392.726	394.076	-0.34	-8.13
Andhra Pradesh	55.154	55.029	52.927	3.97	-0.23
Assam	33.718	35.488	33.311	6.54	5.25
Gujarat	122.820	117.945	118.992	-0.88	-3.97
Rajasthan	0.411	0.262	0.680	-61.47	-36.25
Tamil Nadu	95.327	84.211	88.512	-4.86	-11.66
Tripura	120.059	99.791	99.654	0.14	-16.88
Offshore	1193.838	1238.220	1388.124	-10.80	3.72
Eastern Offshore	1.500	3.717	21.312	-82.56	147.78
Western Offshore	1192.338	1234.503	1366.812	-9.68	3.54
2. OIL	236.939	250.351	194.809	28.51	5.66
Assam	217.998	228.110	181.877	25.42	4.64
Arunachal Pradesh	1.210	0.964	1.015	-5.02	-20.33
Rajasthan	17.731	21.277	11.917	78.54	20.00
3. DGH (Private / JVC)	663.345	606.772	693.524	-12.51	-8.53
Onshore	98.589	106.353	90.134	17.99	7.88
Assam	0.000	0.000	0.000		
Arunachal Pradesh	0.645	1.066	1.670	-36.17	65.27
Gujarat	7.035	7.869	7.669	2.61	11.85
Rajasthan	90.774	97.300	80.795	20.43	7.19
Tamil Nadu	0.135	0.118	0.000	-	-
CBM	50.901	37.239	29.984	24.20	-26.84
Jharkhand (CBM)	0.266	0.195	0.154	26.62	-26.76
Madhya Pradesh (CBM)	3.650	0.216	0.090	140.00	-94.08
West Bengal (CBM)	46.985	36.828	29.740	23.83	-21.62
Offshore	513.855	463.180	573.406	-19.22	-9.86
Eastern Offshore	366.327	293.168	388.633	-24.56	-19.97
Gujarat Offshore	3.218	6.320	3.765	67.86	96.41
Western Offshore	144.310	163.692	181.008	-9.57	13.43
TOTAL (1+2+3)	2521.611	2488.069	2670.533	-6.83	-1.33
CBM	50.901	37.239	29.984	24.20	-26.84
Onshore	763.017	749.430	679.019	10.37	-1.78
Offshore	1707.693	1701.400	1961.530	-13.26	-0.37

Note: Totals may not tally due to rounding off figures.

*: Provisional. **: Revised

Reasons for shortfall are indicated in the note.

MINISTRY OF PETROLEUM & NATURAL GAS

(Para 3)

Refinery Crude Throughput (in terms of crude oil processed) during the month of April, 2016 vis-à-vis April, 2015

Name of Undertaking/Unit	Planned production during the month	Production during the		% variation during the month under review over last year's production in corresponding month	% variation during the month under review over planned production during the corresponding month
		Month under review *	Corresponding month of last year**		
(1)	(2)	(3)	(4)	(5)	(6)
A. Public Sector	11135.931	11136.582	9428.728	18.11	0.01
1. IOC, Guwahati	78.000	75.424	93.522	-19.35	-3.30
2. IOC, Barauni	533.149	559.264	474.419	17.88	4.90
3. IOC, Gujarat	1175.000	1214.962	603.785	101.22	3.40
4. IOC, Haldia	675.000	692.329	647.111	6.99	2.57
5. IOC, Mathura	734.564	797.483	675.394	18.08	8.57
6. IOC, Digboi	55.000	51.755	29.174	77.40	-5.90
7. IOC, Panipat	1300.000	1316.006	1293.081	1.77	1.23
8. IOC, Bongaigaon	199.060	211.582	235.884	-10.30	6.29
9. IOC, Paradip	600.000	394.268	0.000	-	-34.29
Total IOC	5349.773	5313.073	4052.370	31.11	-0.69
10. BPCL, Mumbai	1165.298	1145.523	1136.514	0.79	-1.70
11. BPCL, Kochi	899.988	895.316	893.877	0.16	-0.52
Total BPCL	2065.287	2040.839	2030.391	0.51	-1.18
12. HPCL, Mumbai	633.900	713.907	551.152	29.53	12.62
13. HPCL, Visakh	781.635	803.780	738.830	8.79	2.83
Total HPCL	1415.535	1517.687	1289.982	17.65	7.22
14. CPCL, Manali	858.000	820.049	900.031	-8.89	-4.42
15. CPCL, Narimanam(CBR)	49.300	55.691	39.079	42.51	12.96
Total CPCL	907.300	875.740	939.110	-6.75	-3.48
16. NRL, Numaligarh	224.166	216.529	1.461	14720.61	-3.41
17. MRPL, Mangalore	1170.000	1165.909	1111.415	4.90	-0.35
18. ONGC, Tatipaka	3.871	6.805	3.999	70.16	75.81
B. Joint Venture Sub Total	1295.339	1453.766	897.408	62.00	12.23
19. BORL, Bina	525.000	533.577	1.514	35142.85	1.63
20. HMEL, GGSR, Bhatinda	770.339	920.189	895.894	2.71	19.45
C. Private Sector	6735.007	7565.324	6762.447	11.87	12.33
21. RIL, Jamnagar	2023.860	2731.950	2023.860	34.99	34.99
22. RIL, SEZ	3020.156	3114.526	3020.156	3.12	3.12
Total RIL	5044.016	5846.476	5044.016	15.91	15.91
23. Essar Oil Ltd.(EOL), Vadinar	1690.990	1718.848	1718.431	0.02	1.65
TOTAL(A+B+C)	19166.277	20155.672	17088.584	17.95	5.16

Note: Totals may not tally due to rounding off figures.

*: Provisional.

**: Revised

Reasons for shortfall are indicated in the note.

MINISTRY OF PETROLEUM & NATURAL GAS

Annexure-IV

(Para 3.4)

Refinery-wise Capacity Utilisation during the month of April, 2016 vis-à-vis April, 2015

Name of Undertaking/Unit	April, 2016			April, 2015		
	Prorated Installed Capacity	Actual Crude T'put *	% Utilisation of Installed Capacity	Prorated Installed Capacity	Actual Crude T'put	% Utilisation of Installed Capacity
(1)	(2)	(3)	(4)	(5)	(6)	(7)
A. Public Sector	11101.000	11136.582	100.32	9841.000	9428.728	95.81
1. IOC, Guwahati	82.000	75.424	91.98	82.000	93.522	114.05
2. IOC, Barauni	493.000	559.264	113.44	492.000	474.419	96.43
3. IOC, Koyali	1126.000	1214.962	107.90	1123.000	603.785	53.77
4. IOC, Haldia	616.000	692.329	112.39	615.000	647.111	105.22
5. IOC, Mathura	658.000	797.483	121.20	656.000	675.394	102.96
6. IOC, Digboi	53.000	51.755	97.65	53.000	29.174	55.05
7. IOC, Panipat	1233.000	1316.006	106.73	1230.000	1293.081	105.13
8. IOC, Bongaigaon	193.000	211.582	109.63	193.000	235.884	122.22
9. IOC, Paradip	1233.000	394.268	31.98	0.000	0.000	0.00
Total IOC	5688.000	5313.073	93.41	4443.000	4052.370	91.21
10. BPCL, Mumbai	986.000	1145.523	116.18	984.000	1136.514	115.50
11. BPCL, Kochi	781.000	895.316	114.64	779.000	893.877	114.75
Total BPCL	1767.000	2040.839	115.50	1762.000	2030.391	115.23
12. HPCL, Mumbai	534.000	713.907	133.69	533.000	551.152	103.41
13. HPCL, Visakh	682.000	803.780	117.86	680.000	738.830	108.65
Total HPCL	1216.000	1517.687	124.81	1213.000	1289.982	106.35
14. CPCL, Manali	863.000	820.049	95.02	861.000	900.031	104.53
15. CPCL, Narimanam	82.000	55.691	67.92	82.000	39.079	47.66
Total CPCL	945.000	875.740	92.67	943.000	939.110	99.59
16. NRL, Numaligarh	247.000	216.529	87.66	246.000	1.461	0.59
17. MRPL, Mangalore	1233.000	1165.909	94.56	1230.000	1111.415	90.36
18. ONGC, Tatipaka	5.000	6.805	136.11	5.000	3.999	79.99
B. Joint Venture Sub Total	1233.000	1453.766	117.90	1230.000	897.408	72.96
19. BORL, Bina	493.000	533.577	108.23	492.000	1.514	0.31
20. HMEL, GGSR, Bhatinda	740.000	920.189	124.35	738.000	895.894	121.39
C. Private Sector	6575.000	7565.324	115.06	6557.000	6762.447	103.13
21. RIL, Jamnagar	2712.000	2731.950	100.74	2705.000	2023.860	74.82
22. RIL, SEZ	2219.000	3114.526	140.36	2213.000	3020.156	136.47
Total RIL	4932.000	5846.476	118.54	4918.000	5044.016	102.56
23. EOL, Vadinar	1644.000	1718.848	104.55	1639.000	1718.431	104.85
TOTAL	18910.000	20155.672	106.59	17628.000	17088.584	96.94

*: Provisional.

MINISTRY OF PETROLEUM & NATURAL GAS

Production of Petroleum Products during the month of April, 2016 vis-à-vis April, 2015

Name of Undertaking/Unit	Planned production during the month	Production during the		% variation during the month under review over last year's production in corresponding month	% variation during the month under review over planned production during the corresponding month
		Month under review *	Corresponding month of last year**		
(1)	(2)	(3)	(4)	(5)	(6)
I. Refinery					
A. Public Sector	10354.755	10339.947	8724.908	18.51	-0.14
1. IOC, Guwahati	78.447	101.629	97.579	4.15	29.55
2. IOC, Barauni	486.561	516.748	438.403	17.87	6.20
3. IOC, Koyali, Gujarat	1087.333	1116.933	538.291	107.50	2.72
4. IOC, Haldia	616.000	597.955	547.558	9.20	-2.93
5. IOC, Mathura	709.684	752.708	649.307	15.92	6.06
6. IOC, Digboi	55.400	51.966	21.002	147.43	-6.20
7. IOC, Panipat	1270.700	1347.532	1311.670	2.73	6.05
8. IOC, Bongaigaon	179.920	192.510	197.613	-2.58	7.00
9. IOC, Paradip	509.500	345.059	0.000	-	-32.27
Total IOC	4993.545	5023.040	3801.423	32.14	0.59
10. BPCL, Mumbai	1120.848	1079.717	1070.920	0.82	-3.67
11. BPCL, Kochi	833.068	807.842	839.305	-3.75	-3.03
Total BPCL	1953.916	1887.559	1910.225	-1.19	-3.40
12. HPCL, Mumbai	585.309	637.751	497.339	28.23	8.96
13. HPCL, Visakh	719.415	741.318	652.613	13.59	3.04
Total HPCL	1304.724	1379.069	1149.952	19.92	5.70
14. CPCL, Manali	780.888	724.066	822.318	-11.95	-7.28
15. CPCL, Narimanam(CBR)	49.674	55.818	39.825	40.16	12.37
Total CPCL	830.562	779.884	862.143	-9.54	-6.10
16. NRL, Numaligarh	226.189	209.872	6.415	3171.59	-7.21
17. MRPL, Mangalore	1042.000	1053.842	990.789	6.36	1.14
18. ONGC, Tatipaka	3.820	6.682	3.961	68.70	74.91
B. JVs Sub Total	1211.952	1326.323	839.177	58.05	9.44
19. BORL Bina	484.100	451.960	0.319	141580.25	-6.64
20. HMEL, GGSR, Bhatinda	727.852	874.363	838.858	4.23	20.13
C. Private Sector	6576.376	7628.857	6585.965	15.84	16.00
21. RIL, Jamnagar	2060.253	2586.062	2060.253	25.52	25.52
22. RIL (SEZ)	2883.577	3431.558	2883.577	19.00	19.00
Total RIL	4943.830	6017.620	4943.830	21.72	21.72
23. EOL, Vadinar	1632.546	1611.237	1642.135	-1.88	-1.31
Total Refinery (A+B+C)	18143.083	19295.128	16150.050	19.47	6.35
II. Fractionators					
ONGC	225.204	220.072	211.205	4.20	-2.28
OIL	3.500	3.349	3.767	-11.10	-4.31
GAIL	88.735	84.856	88.936	-4.59	-4.37
D. Total Fractionators	317.439	308.277	303.908	1.44	-2.89
Grand Total (A+B+C+D)	18460.522	19603.405	16453.958	19.14	6.19

Note: Totals may not tally due to rounding off figures.

*: Provisional.